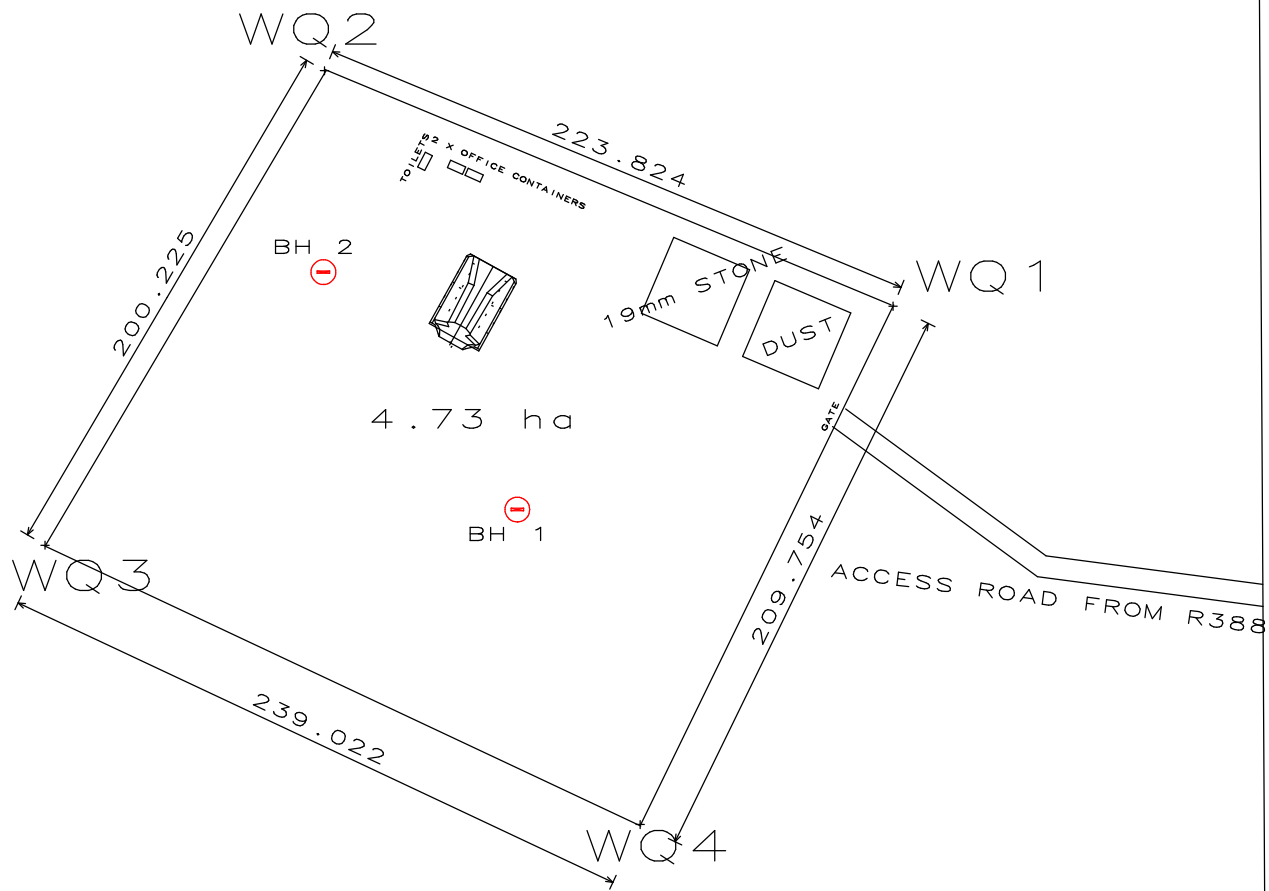


PROPOSED WITTEKLIP QUARRY

PROPOSED QUARRY AREA IS 4.73 HA
PROPOSED QUARRY POSITION



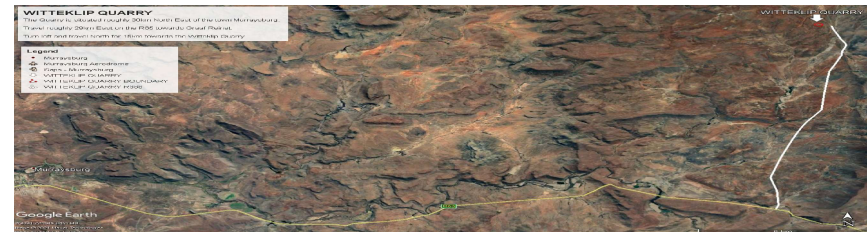
POINT	LATITUDE	LONGDITUDE
WQ1	-31.84639814	24.0687715
WQ2	-31.84560973	24.06659485
WQ3	-31.84715761	24.06550588
WQ4	-31.84809062	24.06778215

THE CURRENT GRAVEL ROAD WILL BE UPGRADED TO FORM THE NEW ACCESS ROAD FROM THE R388
THERE WILL BE TWO STOCKPILES. A DUST AND A 19mm STONE STOCKPILE

THERE WILL ALSO BE THE FOLLOWING ON SITE :
 - TWO BOREHOLES SITUATED AT THE PROPOSED QUARRY
 - TWO OFFICE CONTAINERS
 - ABLUTION FACILITY

BOREHOLE POSITIONS

Borehole 1 -31.8470541 24.067321
 Borehole 2 -31.8462701 24.066584



DRAWN BY
Hannes vd Berge
CONCOR
INFRASTRUCTURE

APPROVED BY
REGIONAL MANAGER
of the DMR

DRAWN FOR
CONCOR
INFRASTRUCTURE

PROJECT
WITTEKLIP QUARRY
SCALE : 1 / 2750
DATE 23/3/2021

NOTES
 SOLDAATKOP ESTATES CC
 WITTEKLIP nr 32
 MURRAYSBURG DISTRICT
 BEAUFORT WES MUNICIPALITY
 SYSTEM S - 360 - L025 - WGS