

# Appendix C: Facility illustration(s)



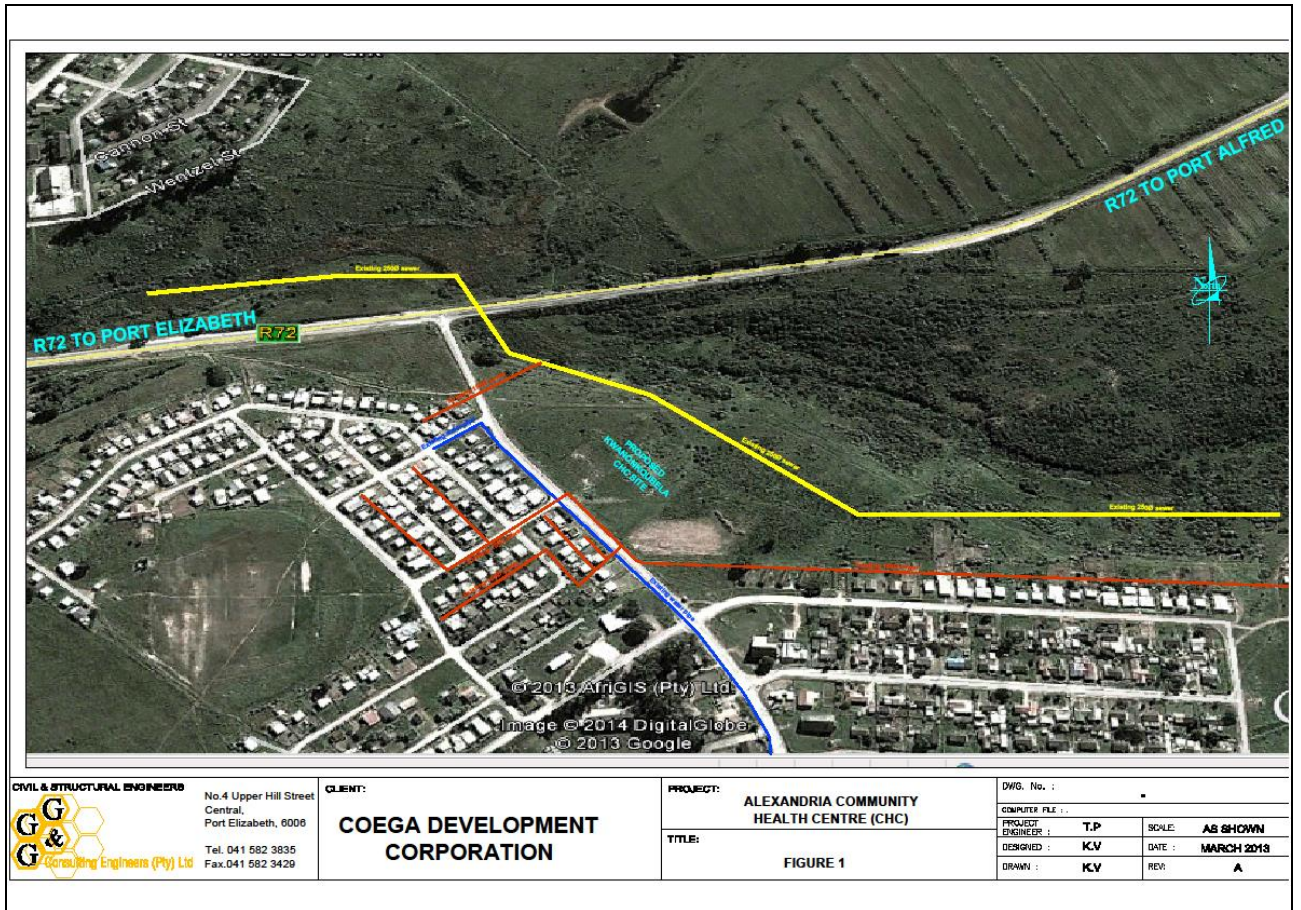


Figure 2. Layout of existing bulk service infrastructure i.e. sewage pipelines (yellow: 250 mm; orange: 150 mm) and water pipelines (dark blue) around the proposed Alexandria Community Health Centre site (Source: GG&G Consulting Engineers (Pty) Ltd, March 2013).