

**COORDINATES TABLE WG 27**

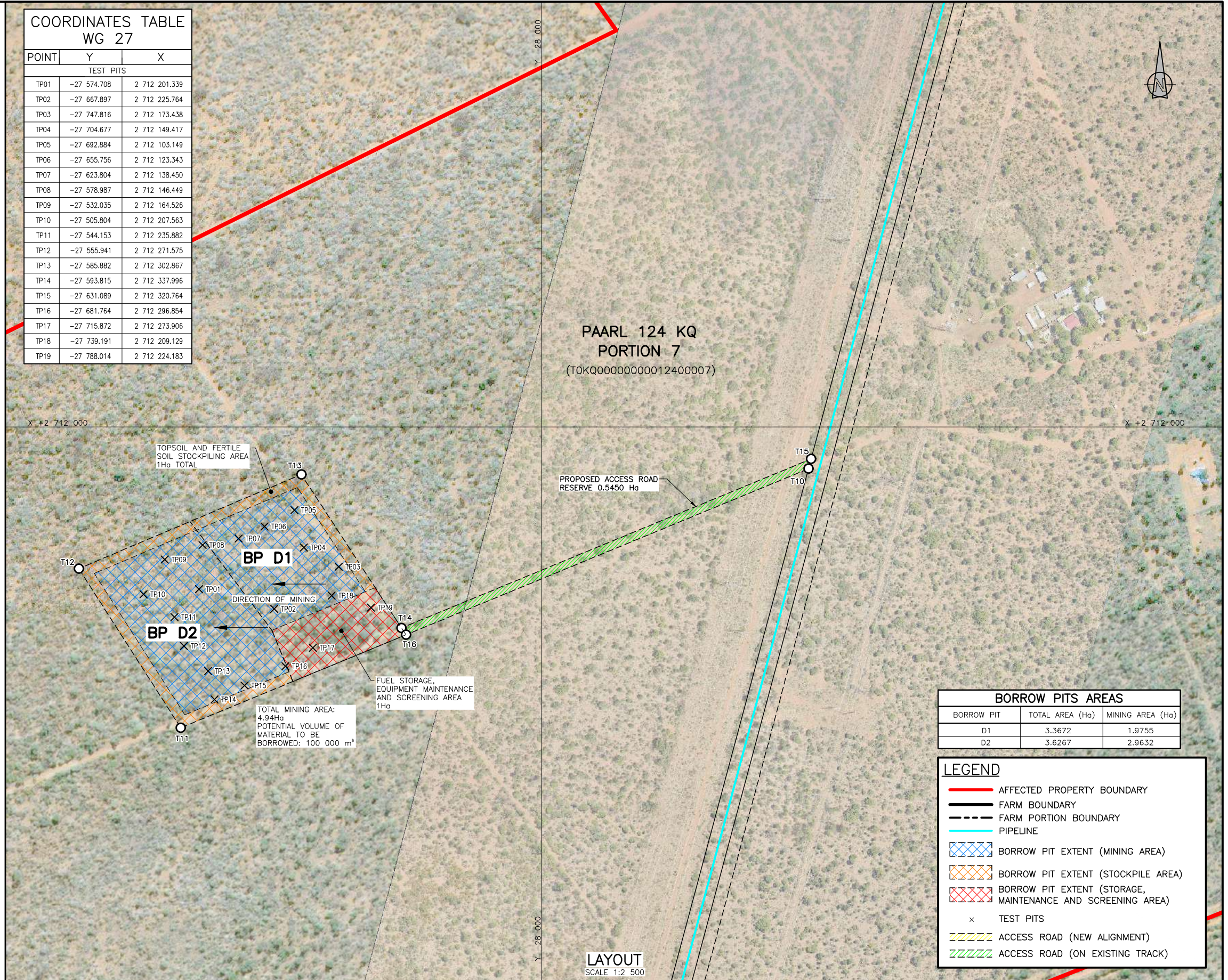
POINT	Y	X
BORROW PIT		
T11	-27 551.907	2 712 373.149
T12	-27 425.425	2 712 175.719
T13	-27 701.508	2 712 058.867
T16	-27 831.393	2 712 257.859

**COORDINATES TABLE WG 27**

POINT	Y	X
ACCESS ROAD		
T10	-28 330.771	2 712 051.862
T16	-27 831.393	2 712 257.859
T14	-27 825.831	2 712 249.336
T15	-28 334.029	2 712 039.701

**COORDINATES TABLE WG 27**

POINT	Y	X
TEST PITS		
TP01	-27 574.708	2 712 201.339
TP02	-27 667.897	2 712 225.764
TP03	-27 747.816	2 712 173.438
TP04	-27 704.677	2 712 149.417
TP05	-27 692.884	2 712 103.149
TP06	-27 655.756	2 712 123.343
TP07	-27 623.804	2 712 138.450
TP08	-27 578.987	2 712 146.449
TP09	-27 532.035	2 712 164.526
TP10	-27 505.804	2 712 207.563
TP11	-27 544.153	2 712 235.882
TP12	-27 555.941	2 712 271.575
TP13	-27 585.882	2 712 302.867
TP14	-27 593.815	2 712 337.996
TP15	-27 631.089	2 712 320.764
TP16	-27 681.764	2 712 296.854
TP17	-27 715.872	2 712 273.906
TP18	-27 739.191	2 712 209.129
TP19	-27 788.014	2 712 224.183



**BORROW PITS AREAS**

BORROW PIT	TOTAL AREA (Ha)	MINING AREA (Ha)
D1	3.3672	1.9755
D2	3.6267	2.9632

**LEGEND**

- AFFECTED PROPERTY BOUNDARY (Red solid line)
- FARM BOUNDARY (Black solid line)
- FARM PORTION BOUNDARY (Black dashed line)
- PIPELINE (Cyan line)
- BORROW PIT EXTENT (MINING AREA) (Blue hatched area)
- BORROW PIT EXTENT (STOCKPILE AREA) (Orange hatched area)
- BORROW PIT EXTENT (STORAGE, MAINTENANCE AND SCREENING AREA) (Red hatched area)
- TEST PITS (x symbol)
- ACCESS ROAD (NEW ALIGNMENT) (Yellow hatched area)
- ACCESS ROAD (ON EXISTING TRACK) (Green hatched area)

<p>CONSULTING ENGINEER</p> <p>WOODMEAD NORTH OFFICE PARK 54 MAXWELL DRIVE WOODMEAD</p>	<p>IMPLEMENTING AGENT</p> <p>A new word for water</p>	<p>REVISION</p> <table border="1"> <thead> <tr> <th>MOD No.</th> <th>DATE</th> <th>DESCRIPTION</th> <th>FOR</th> <th>DWS</th> </tr> </thead> <tbody> <tr> <td> </td> <td> </td> <td> </td> <td> </td> <td> </td> </tr> </tbody> </table>		MOD No.	DATE	DESCRIPTION	FOR	DWS						<p>DEPARTMENT OF WATER AND SANITATION REPUBLIC OF SOUTH AFRICA</p> <p>HEAD OFFICE ENGINEERING SERVICES PRIVATE BAG X313 PRETORIA 0001</p> <p>DESIGN: P. VAN HEERDEN DRAWN: A. STEENBERG</p>		<p>MOKOLO CROCODILE WATER AUGMENTATION PROJECT PHASE 2 (MCWAP-2)</p> <p><b>BORROW PIT D</b> INDICATIVE DEVELOPMENT PLAN</p>			
		MOD No.	DATE	DESCRIPTION	FOR	DWS													
<p>CHEF ENGINEER / APP (Pr. Eng): DATE: DIRECTOR (Pr. Eng): DATE:</p>		<p>EXTERNAL APPROVAL: DATE:</p>		<p>DESIGN: P. VAN HEERDEN DRAWN: A. STEENBERG</p>		<p>PROVINCE: LIMPOPO DISTRICT: THABAZIMBI/LEPHALELE KEYCODES: SHEET: 1 OF 1 REG. No. OTHER NUMBER: B</p>													