

Appendix C : Site Photographs.

The first set of photographs show visual context as depicted in the Visual Assessment (Stead, 2018). The second set of photos provide a scattershot of the entire site. In order to show context between both of the projects currently under investigation on the site (Gaetsewe and Mogara Solar) photographic plates of both are depicted.

In order to convey the landscape character of the proposed PV site, photographs that characterise the landscape sense of place were taken as mapped in **Figure 1** on the following page.

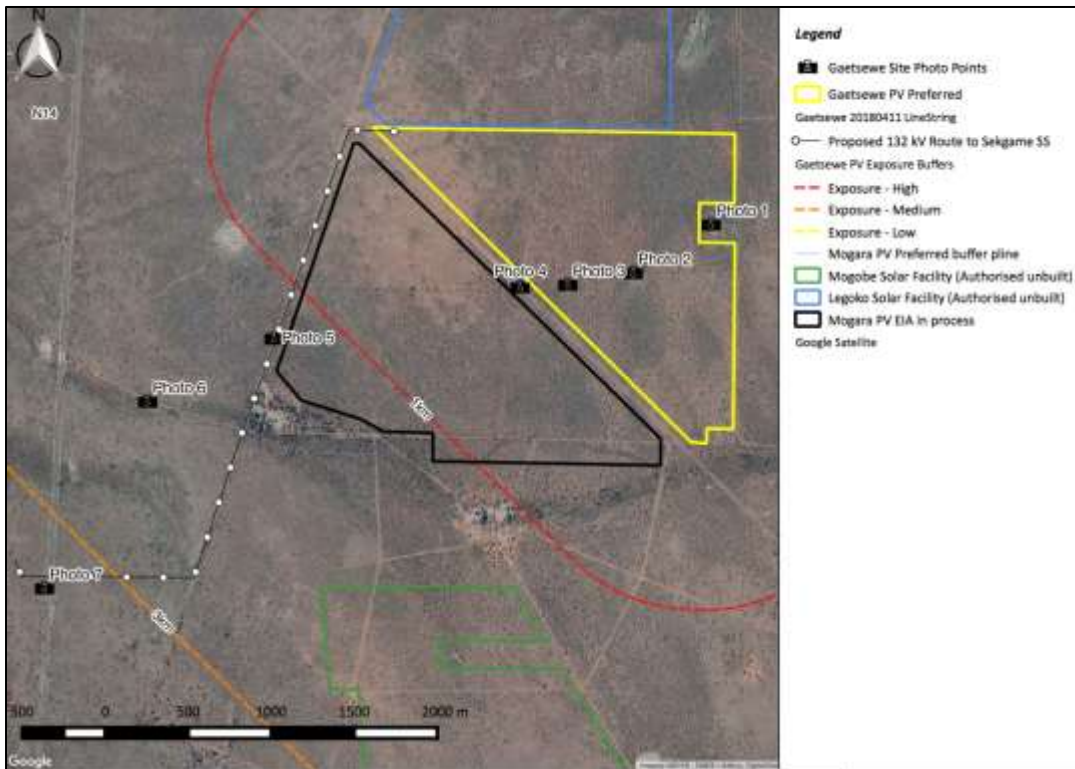


Figure 1: Proposed site photograph locality map.



Figure 2: View southeast from **Photo 1** of the pan that is located outside the proposed site but would be enclosed on three sides by the PV fencing. This area could be used for landscape enhancement if this area was set aside as an informal conservation area (Source: D. Holder Cape EAPrac 2018).



Figure 3: View east from **Photo 2** of typical cattle farming reservoir surrounded by Kathu Bushveld vegetation (Source: D. Holder Cape EAPrac 2018).



Figure 4: View from **Photo 3** of typical farming tracks alongside an internal fence, and bushveld vegetation (Source: D. Holder Cape EAPrac 2018).



Figure 5: View from **Photo 4** of the 400kV power line routed along the south-western boundary of the proposed site (Source: D. Holder Cape EAPrac 2018).



Figure 6: View from **Photo 5** of the 88kV power line alongside which the proposed PV power line would be routed (Source: D. Holder Cape EAPrac 2018).



Figure 7: View from **Photo 6** location to the west of the existing gravel road where the PV project would be accessed.



Figure 8: View south from **Photo 7** showing the N14 national road crossing point.

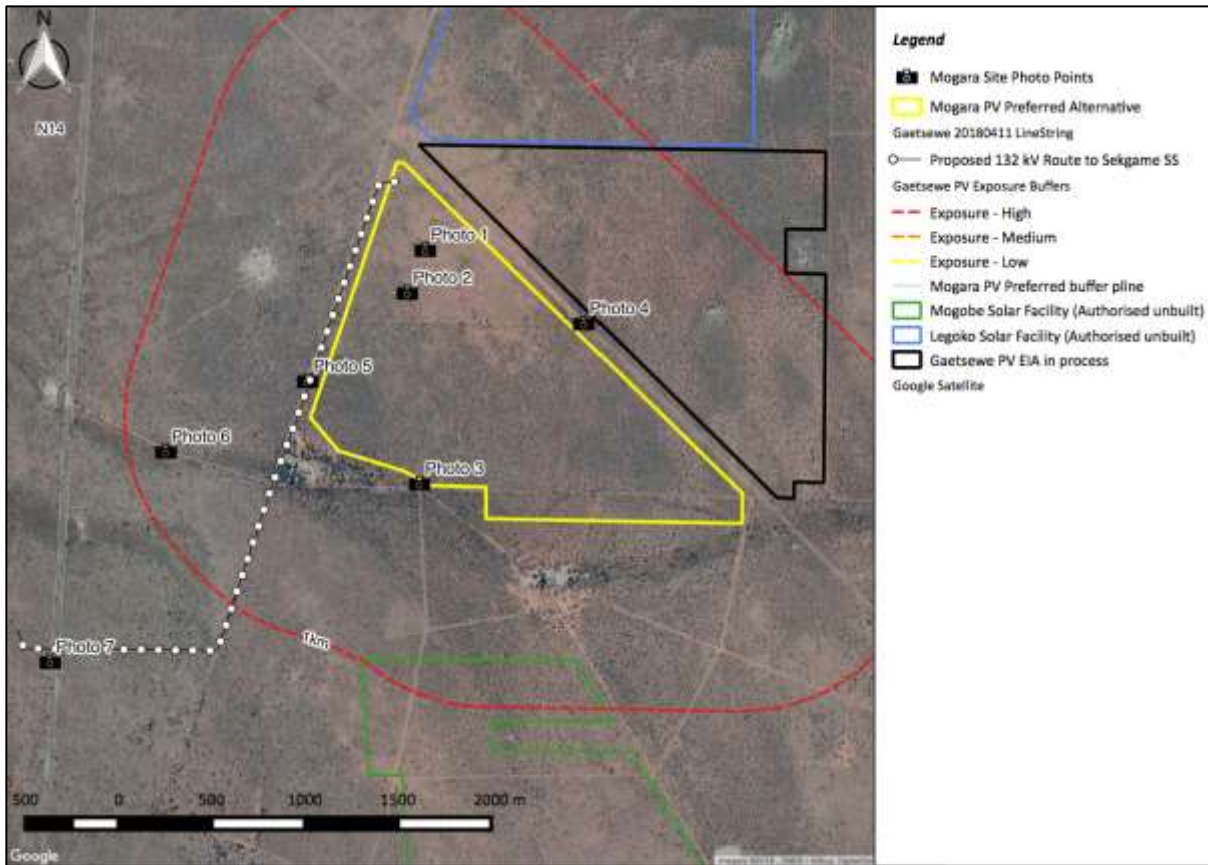


Figure 9: Proposed site photograph locality map.



Figure 10: View west from **Photo 1** of the low bush and the Shishen waste rock dumps visible in the background. (Source: D. Holder Cape EAPrac 2018).



Figure 11: View east from **Photo 2** of veld grasses and low vegetation with the Eskom powerline in the background (Source: D. Holder Cape EAPrac 2018).



Figure 12: View from **Photo 3** toward the north of the typical farm tracks used to enter into the site and the medium sized bushveld vegetation (Source: D. Holder Cape EAPrac 2018).



Figure 13: View from **Photo 4** of the 400kV power line routed along the south-western boundary of the proposed site (Source: D. Holder Cape EAPrac 2018).



Figure 14: View from **Photo 5** of the 88kV power line alongside which the proposed PV power line would be routed (Source: D. Holder Cape EAPrac 2018).



Figure 15: View from **Photo 6** location to the west of the existing gravel road where the PV project would be accessed.



Figure 16: View south from **Photo 7** showing the N14 national road crossing point.

PHOTOGRAPHIC SCATTERSHOT









