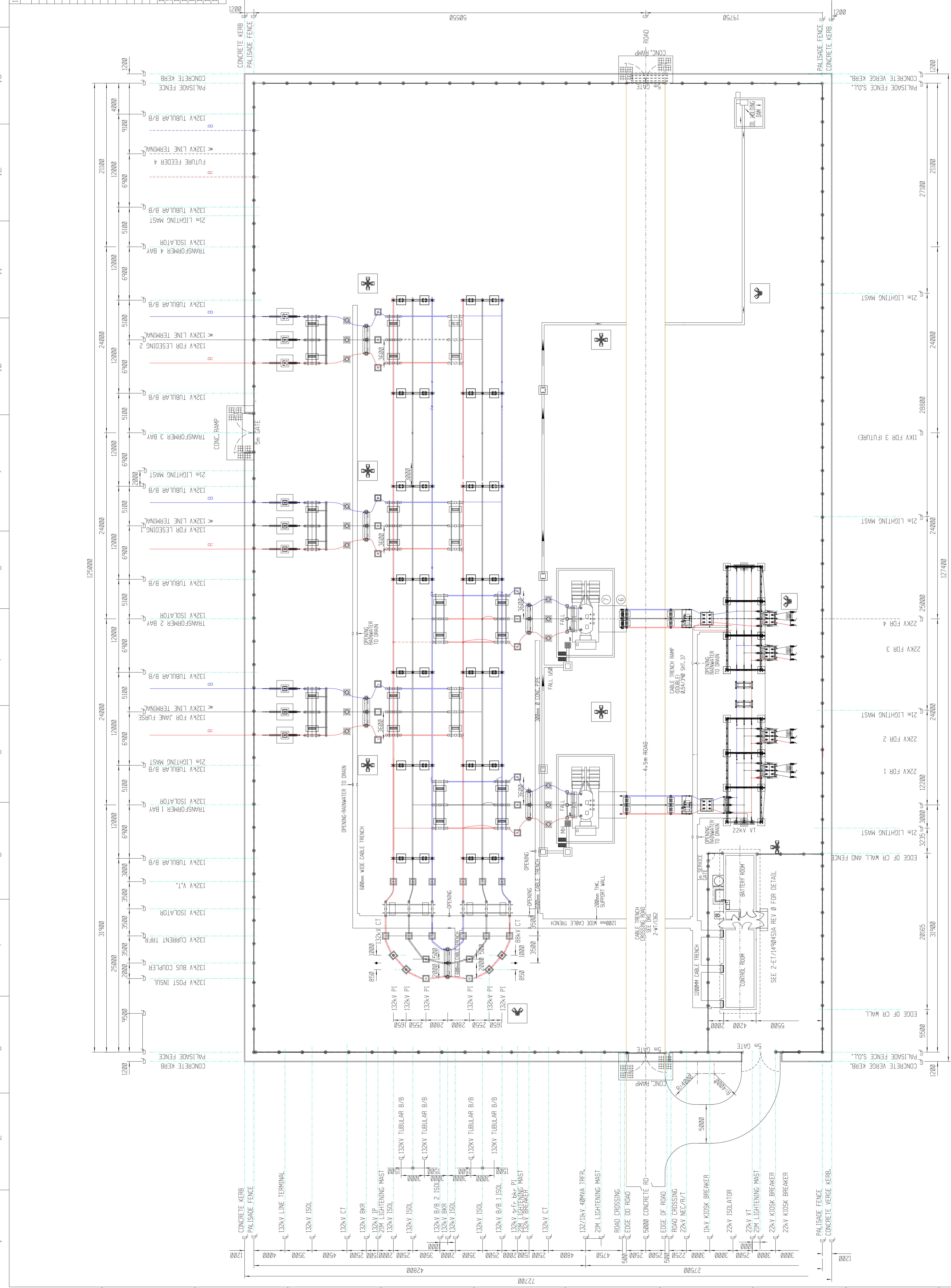


ITEM DESCRIPTION	QTY	UNIT	DRG NO.
1. 132KV CABLE END	2	2	
2. 132KV ISOLS - 31600A, 310kV, CRIBB H/O, 31MM	2	2	
3. 132KV KIOSK BRK - 1000A, 20kV, 31MM	2	2	
4. 132KV KIOSK BRK - 1000A, 20kV, 31MM	2	2	
5. 132KV NE/AF/EA/VA/IX TRFR - 360A, 31MM	2	2	
6. 132KV ROAD CROSSING	4	4	
7A. 132KV SA-S/CL/MCOV, 36KV, 31MM	6	6	
HY EQUIPMENT			
7. TRFRS 132/110KV D/C, 100A, 40MM, 31 H/O	2	2	
8. 132KV SA-S/CL/MCOV, 36KV, 31MM	6	6	
9. 132KV BARS - 2500A, 40kV, 31MM (16800) 31MM	6	6	
10. 132KV INSULATOR POST STATION - 31MM	4	4	
11. 132KV ISOLS - 2500A, 40kV, 31MM/4V	8	8	
12. 132KV VTS - 1000/500A, 40kV, 31MM/4V	6	6	
13. 132KV TUBULAR B/B SUPPORTS	6	6	
14. 132KV ISOL - 2500A, 25kV, T/LINE, H/O, 31MM	4	4	
15. 132KV SA-S/CL/MCOV, 48KV, 31MM	2	2	
16. 21M LIGHTNING MAST	9	9	

- NOTES :**
1. ALL WORK TO BE DONE IN ACCORDANCE WITH SABS2000 LATEST REVISION.
 2. ALL LEVELS TO BE SET-OUT FROM BENCH INDICATED ON SHEET 2 WITH TOP OF FOUNDATION LEVELS.
 3. TOP OF EQUIPMENT FOUNDATIONS TO BE 150mm ABOVE TERRACE LEVEL.
 4. H.V. YARD TO HAVE A CLEAN, HARD, SOUND CRUSHED STONE OF A MIN 25mm NOMINAL SIZE, 100mm THICK LAYER. THIS SHOULD APPLY AFTER INSTALLATION OF ALL EQUIPMENT AND CABLES.
 5. ALL FOUNDATION HUBBOLTS TO BE ALLOWED FOR CASTING OF CONCRETE TO A TOLERANCE OF +2mm. FOUNDATION TOLERANCE TO BE IN ACCORDANCE WITH SABS2000 G6 GRADE II.
- DETAILS DRAWING AND NOT LESS THAN 300mm IN NATURAL GROUND.
7. ALL TOP EDGES OF CONCRETE ABOVE G.L. TO HAVE 25mm HAMMER AT 45.
 8. ALL FOUNDATIONS TO HAVE 25mm GROUT UNDER BASEPLATES ONLY.
 9. GROUT MIX 2:1 ALL HUBBOLTS ARE SUPPLIED WITH 2 NUTS AND 2 WASHERS. GROUT MUST BE A FEATHERED FINISH TO ALLOW WATER TO RUN FREE FROM THE BASEPLATE.
 9. STRUCTURE SHALL BE ERECTED, ALIGNED, SQUARED, PLUMBED AND LEVELLED TO AN ACCURACY SPECIFIED IN SABS 1200 H 6.2.2.4.12 - CLASS II.
 10. EQUIPMENT NOT FITTED WITH DIA.26mm OR DIA.38mm CONNECTION PRINGS MUST BE FITTED WITH TINED DIA.26mm OR DIA.38mm BRASS PRINGS DRILLED AND TAPED TO APPROPRIATE SIZES.
 11. ALL SURFACE AREAS OF CONDUCTOR OR CONTACT AREA OF CONNECTION CLAMPS MUST BE TREATED AS DESCRIBED PRIOR TO MAKING A CLAMPED OR CRIMPED CONNECTION.
 - a) APPLY THIN LAYER OF NON OXIDE GREASE TO SURFACE AREA.
 - b) BRUSH NON OXIDE GREASED AREA THOROUGHLY WITH A CLEAN BRUSH.
 - c) WIPE SURFACE AREA CLEAN WITH RAG AND IMMEDIATELY APPLY A FRESH LAYER OF NON OXIDE GREASE TO CLEAN SURFACE AREA.
 - d) FIT CLAMP TO CONNECTOR PRING OR CONDUCTOR AND TORQUE TO:
 - i) 10mm GALVANISED STEEL BOLTS - 15Nm.
 - ii) 16mm GALVANISED STEEL BOLTS - 25Nm.
 - iii) 20mm GALVANISED STEEL BOLTS - 45Nm.
 - iv) 25mm GALVANISED STEEL BOLTS - 60Nm.
 - v) 32mm GALVANISED STEEL BOLTS - 80Nm.
 - vi) 40mm GALVANISED STEEL BOLTS - 100Nm.
 - vii) 50mm GALVANISED STEEL BOLTS - 120Nm.
 - viii) 60mm ALUMINIUM BOLTS - 10Nm.
 - ix) 70mm ALUMINIUM BOLTS - 20Nm.
 - x) 80mm ALUMINIUM BOLTS - 30Nm.
 - xi) 100mm ALUMINIUM BOLTS - 40Nm.
 - xii) 120mm ALUMINIUM BOLTS - 50Nm.
 - xiii) 150mm ALUMINIUM BOLTS - 60Nm.
 - xiv) 200mm ALUMINIUM BOLTS - 80Nm.
 - xv) 250mm ALUMINIUM BOLTS - 100Nm.
 - xvi) 300mm ALUMINIUM BOLTS - 120Nm.
 - xvii) 400mm ALUMINIUM BOLTS - 150Nm.
 - xviii) 500mm ALUMINIUM BOLTS - 200Nm.
 - xix) 600mm ALUMINIUM BOLTS - 250Nm.
 - xx) 800mm ALUMINIUM BOLTS - 350Nm.
 - xxi) 1000mm ALUMINIUM BOLTS - 450Nm.
 12. ALL CLAMPS FROM THE SUPPLIER, BUSHING TO THE HV SA TO BE TAPED FIRST WITH SOME DUTTY TAPE AND THEN COVERED WITH P23 TAPE.
 13. PLACE 3 x 300mm CONCRETE PIPES 250mm C/C UNDER TREE SUPPLY FOR 60MM TRENCH.
 14. PLACE 4 x 300mm CONCRETE PIPES 250mm C/C UNDER TREE SUPPLY FOR 90MM TRENCH.
 15. PLACE 5 x 300mm CONCRETE PIPES 250mm C/C UNDER TREE SUPPLY FOR 120MM TRENCH.



REV	ISSUE	DESCRIPTION	BY	CHKD	AUTH	DATE	PROJECT NO.
0	1ST ISSUE						

Esikom Distribution

TJATANE
132/22KV
SUBSTATION
GENERAL ARRANGEMENT

AUTH: _____	DATE: _____	CHKD: _____	DATE: _____
DRAWING DATE: _____			

SCALE 1:1 250

THIS DRAWING IS THE PROPERTY OF ESKOM

REVISION	SHEET	REVISION
2	2	0

1	2	3	4	5	6	7	8	9	10	11	12	13	14	15	16	ALL
---	---	---	---	---	---	---	---	---	----	----	----	----	----	----	----	-----