

Plan 2(2)

Ventersburg Consolidated Project

in the district of Kroonstad, Ventersburg and Hennenman

Project Extent: 7 943.07Ha
 After 1:50 000 Topo Sheet
 2727 CC, CD & 2827 AA, AB
 WGS84/Hartebeeshoek



- Drill Sites
- Powerline Servitude
- Prospect Area
- Accepted Farms (Per DMR)

WGS84 COORDINATES

Point	X	Y	Point	X	Y
0	27.148652	-27.870369	40	27.150585	-27.98098
1	27.164114	-27.880479	41	27.150585	-27.979345
2	27.161884	-27.887466	42	27.181109	-27.969271
3	27.165303	-27.887615	43	27.187746	-27.967189
4	27.176156	-27.894751	44	27.192691	-27.950402
5	27.177494	-27.894751	45	27.20154	-27.926067
6	27.177345	-27.889251	46	27.204663	-27.917739
7	27.192658	-27.88936	47	27.207135	-27.90941
8	27.209931	-27.880033	48	27.205834	-27.90902
9	27.205336	-27.891332	49	27.203882	-27.915657
10	27.207228	-27.89267	50	27.200108	-27.926328
11	27.212283	-27.890540	51	27.197766	-27.934266
12	27.216445	-27.894454	52	27.187616	-27.934885
13	27.238449	-27.907686	53	27.183972	-27.937519
14	27.238449	-27.908726	54	27.194513	-27.943896
15	27.239341	-27.916755	55	27.193602	-27.946889
16	27.22938	-27.925229	56	27.187225	-27.945327
17	27.217635	-27.944556	57	27.185533	-27.950532
18	27.227744	-27.953327	58	27.18278	-27.959381
19	27.22596	-27.956301	59	27.178897	-27.959902
20	27.217932	-27.954368	60	27.176034	-27.960683
21	27.218378	-27.95526	61	27.168226	-27.963155
22	27.216445	-27.956301	62	27.160548	-27.951183
23	27.210796	-27.955855	63	27.154822	-27.947669
24	27.205444	-27.973844	64	27.157685	-27.933225
25	27.202322	-27.972803	65	27.151439	-27.933615
26	27.188793	-27.982764	66	27.149487	-27.943765
27	27.186117	-27.985886	67	27.152089	-27.945717
28	27.183143	-27.99213	68	27.142199	-27.954957
29	27.175115	-27.99213	69	27.126647	-27.964189
30	27.172736	-27.999712	70	27.124044	-27.956726
31	27.166492	-27.997036	71	27.145739	-27.945965
32	27.165452	-28.005808	72	27.147995	-27.943014
33	27.160546	-28.002091	73	27.136672	-27.934684
34	27.152815	-28.005362	74	27.147821	-27.933642
35	27.147017	-28.008484	75	27.140011	-27.923402
36	27.138691	-28.012201	76	27.128383	-27.930345
37	27.140772	-28.00899	77	27.127515	-27.92965
38	27.143746	-27.988711	78	27.133069	-27.915592
39	27.148057	-27.991238	79	27.142962	-27.886955

Servitudes according to the Title Deeds and SG Diagrams

Applicants Signature

Date

Prepared By:

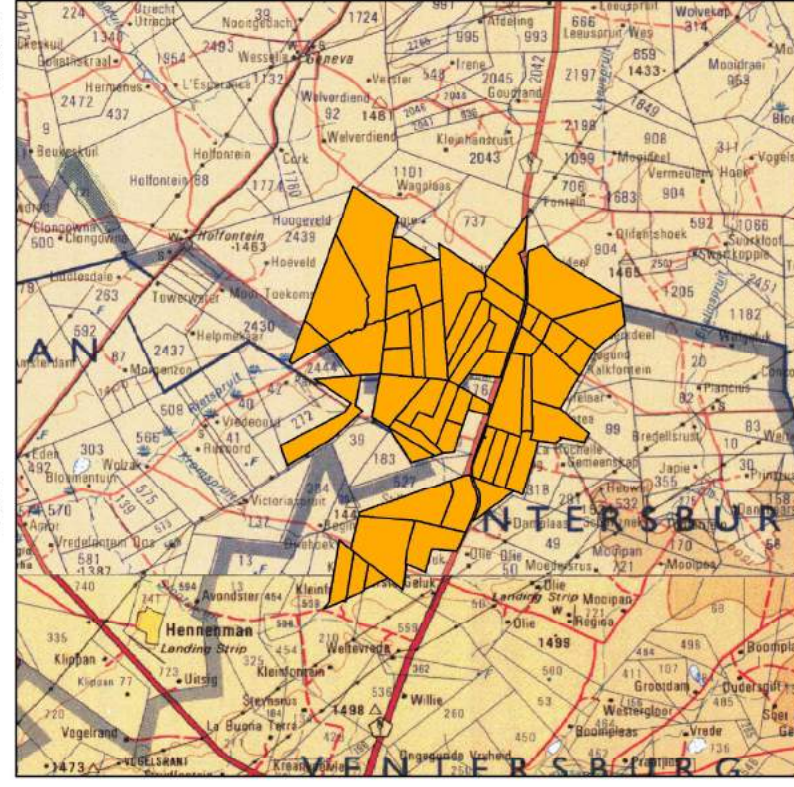
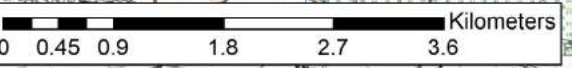


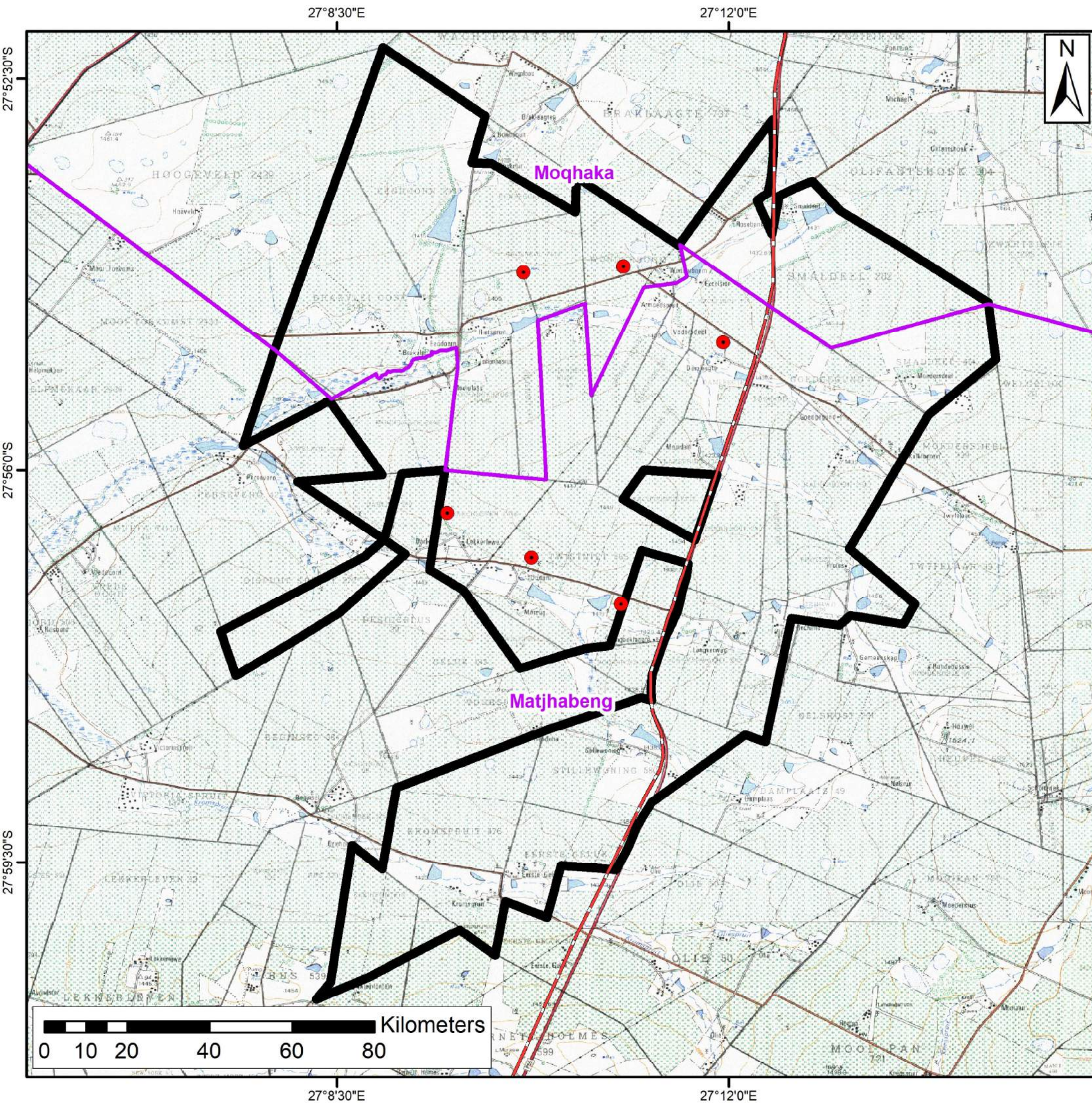
Farm Name	Farm Number	Farm Portion	District	Province
Armoedspruit	416	RE	Ventersburg	Free State
Brakvlei	2442	0	Ventersburg	Free State
Brakvlei Oost	2441	0	Ventersburg	Free State
Burnett-Holmes	599	RE	Ventersburg	Free State
Damleegte	323	0	Kroonstad	Free State
Dispuut Spruit	727	0	Ventersburg	Free State
Eendoorn	2440	0	Ventersburg	Free State
Eendracht	259	RE	Ventersburg	Free State
Eerste Geluk	51	RE	Ventersburg	Free State
Excelsior	122	0	Ventersburg	Free State
Groenkol	2448	0	Ventersburg	Free State
Johannesrust	2446	RE	Ventersburg	Free State
Johannesrust	2446	1	Ventersburg	Free State
Johannesrust	2449	0	Hennenman	Free State
Kalkfontein	294	0	Kroonstad	Free State
Goedegund	434	3	Ventersburg	Free State
Goedegund	434	5	Ventersburg	Free State
Goedegund	434	RE	Ventersburg	Free State
Goedegund	434	1	Ventersburg	Free State
Goedegund	434	2	Ventersburg	Free State
Goedegund	434	4	Ventersburg	Free State
Kleinfontein	210	RE	Ventersburg	Free State
Kleinfontein	210	1	Ventersburg	Free State
Kromspruit	476	0	Ventersburg	Free State
La Rochette	231	0	Kroonstad	Free State
Lan Kuil	225	RE	Kroonstad	Free State
Langverwacht	302	RE	Ventersburg	Free State

Powerline
 2s/1959, 126s/1959, 315s/1959,
 404s/1959, 85s/1959, 125s/1959

THE REGISTERED DESCRIPTION OF THE LAND TO WHICH THE APPLICATION RELATES SPECIFYING THE FARM NAME AND SUBDIVISION:

SG Code	Farm Name	Farm Number	Farm Portion	District	Province
F0350000000030200001	Langverwacht	302	1	Kroonstad	Free State
F0350000000030200002	Langverwacht	302	2	Kroonstad	Free State
F02000000000244500000	Lekkerleiven	2445	0	Kroonstad	Free State
F03500000000322000000	Moederserf	322	0	Ventersburg	Free State
F03500000000102000000	Mooiplaats	102	0	Ventersburg	Free State
F02000000000244300000	Mooiplaats	2443	0	Ventersburg	Free State
F03500000000063000000	Protest	63	0	Ventersburg	Free State
F02000000000245000000	Rietspruit	2450	RE	Ventersburg	Free State
F02000000000245000001	Rietspruit	2450	1	Hennenman	Free State
F02000000000244700000	Rondebult	2447	RE	Ventersburg	Free State
F02000000000244700001	Rondebult	2447	1	Ventersburg	Free State
F02000000000090300000	Rosebank	903	RE	Kroonstad	Free State
F02000000000202000000	Smaldeel	202	RE	Ventersburg	Free State
F03500000000041400000	Smaldeel	414	0	Ventersburg	Free State
F03500000000058000000	Stillewoning	580	RE	Ventersburg	Free State
F03500000000075700000	Stillewoning	757	0	Ventersburg	Free State
F03500000000017500000	Twistniet	175	0	Ventersburg	Free State
F03500000000056500000	Twistniet	565	RE	Ventersburg	Free State
F03500000000056500001	Twistniet	565	1	Ventersburg	Free State
F03500000000056500002	Twistniet	565	2	Ventersburg	Free State
F03500000000056500003	Twistniet	565	3	Ventersburg	Free State
F03500000000056500005	Twistniet	565	5	Kroonstad	Free State
F03500000000056500006	Twistniet	565	6	Kroonstad	Free State
F03500000000032100000	Vaderdeel	321	0	Ventersburg	Free State
F03500000000023400000	Vlakspruit	234	0	Ventersburg	Free State
F02000000000110000000	Wonderboom	1100	0	Ventersburg	Free State



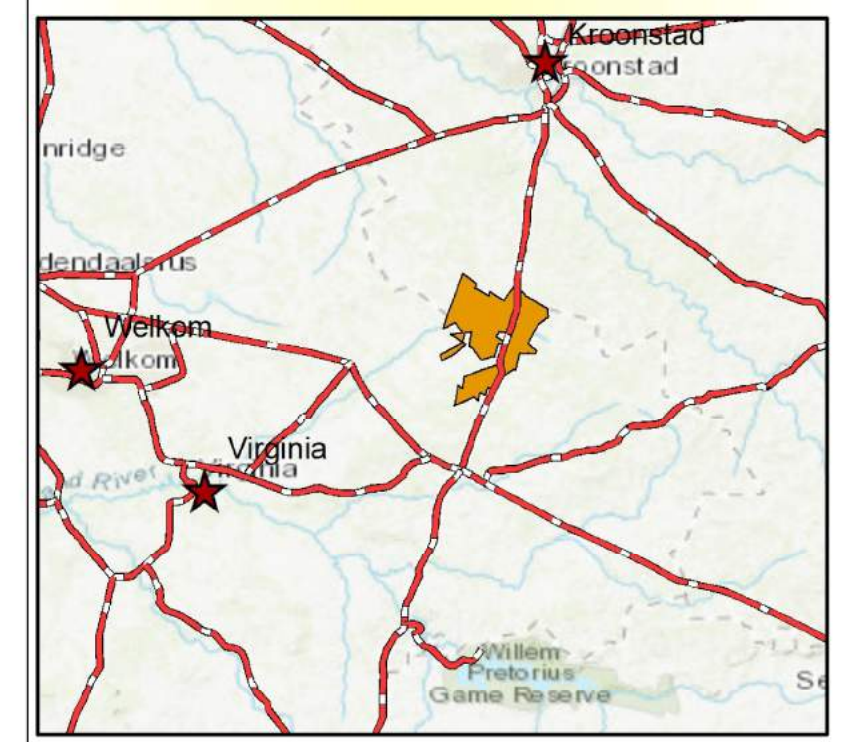


Local Municipality

Ventersburg Consolidated

- Drillholes
- Local Municipalities
- Roads
- Project Area

Source:
Chief Surveyor General: Free State Local Municipalities

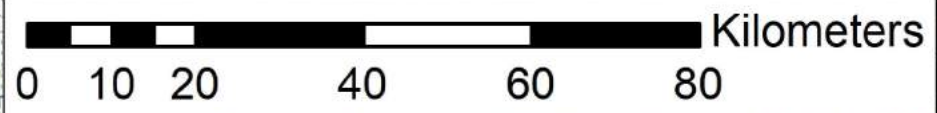


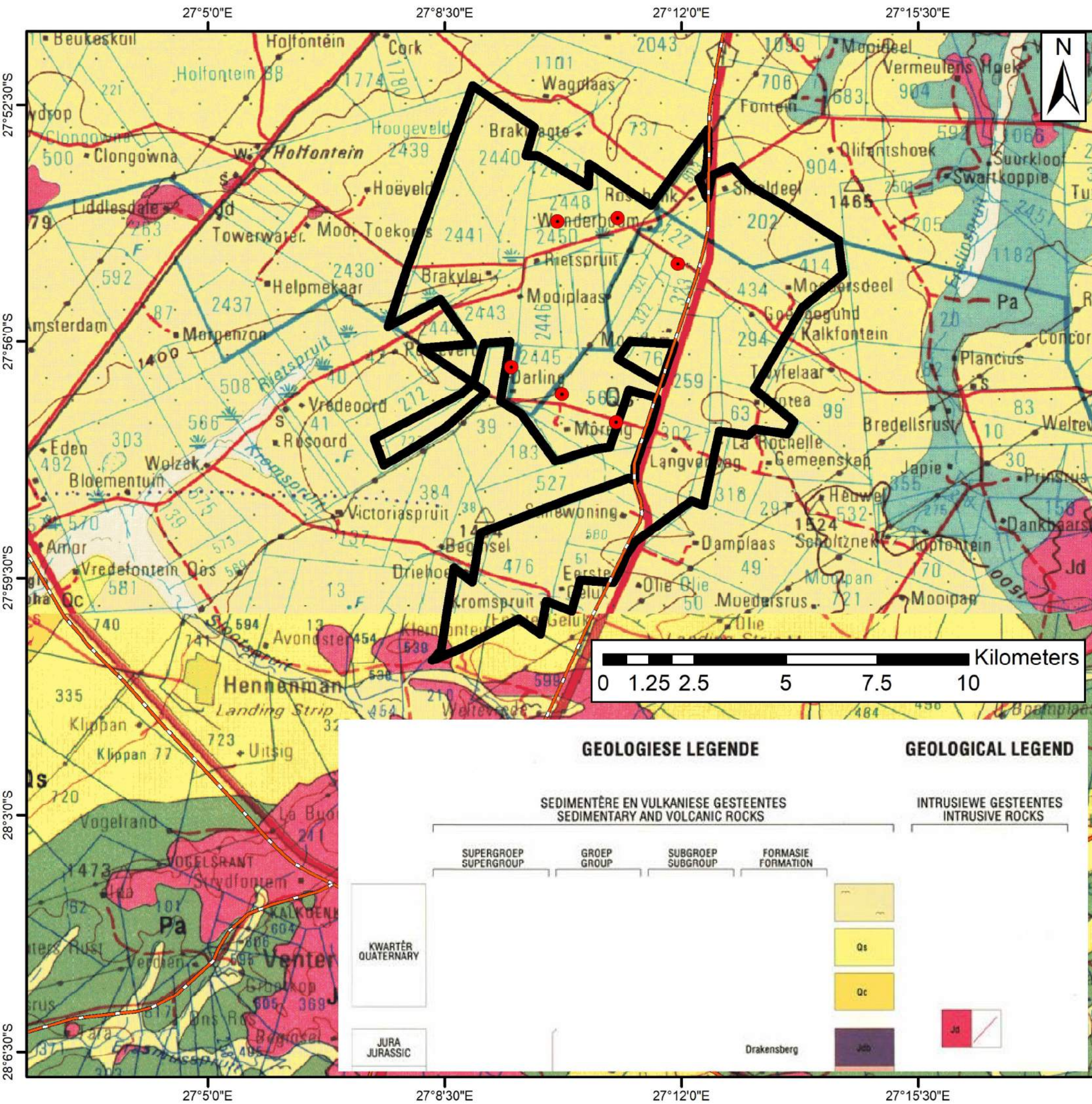
Coord System: GCS WGS 1984

Datum: WGS 1984

Units: Degrees

Prepared by:

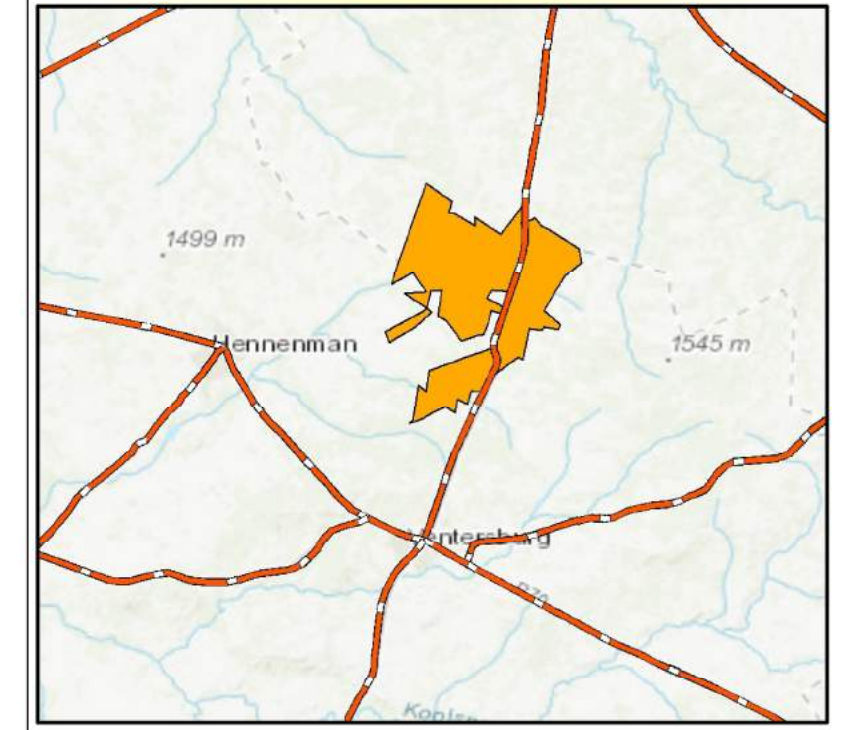




Geology

Ventersburg Consolidated

- Drillholes
- Provincial Roads
- Project Area



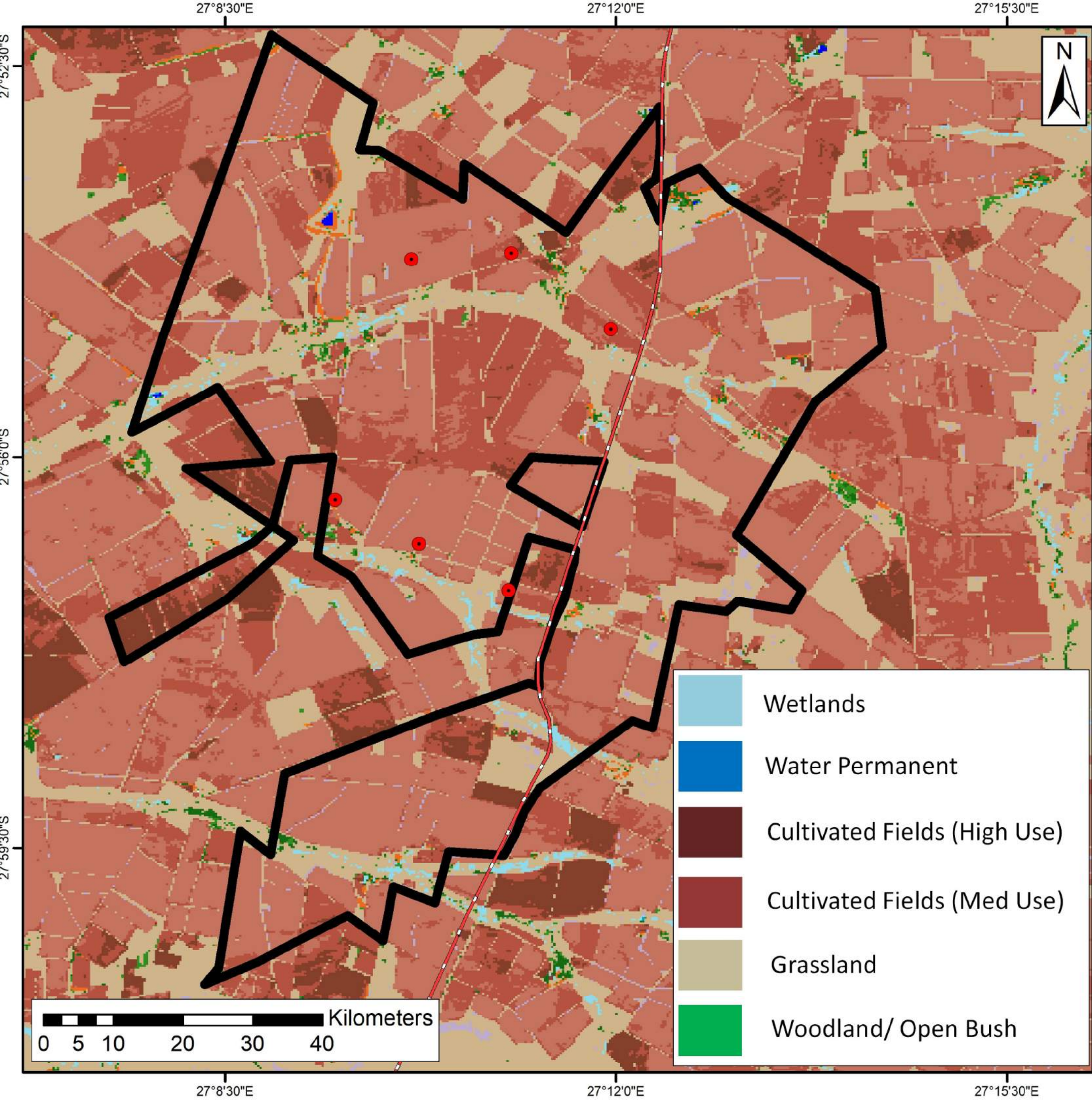
Coord System: GCS WGS 1984
 Datum: WGS 1984
 Units: Degrees

Prepared by:



Excellence and Innovation in the Resources Industry

GEOLOGIESE LEGENDE				GEOLOGICAL LEGEND	
SEDIMENTÊRE EN VULKANIESE GESTEENTES SEDIMENTARY AND VOLCANIC ROCKS				INTRUSIEWE GESTEENTES INTRUSIVE ROCKS	
SUPERGROEP SUPERGROUP	GROEP GROUP	SUBGROEP SUBGROUP	FORMASIE FORMATION		
KWARTÊR QUATERNARY				Qs	
				Qc	
JURA JURASSIC			Drakensberg	Jd	Jdb

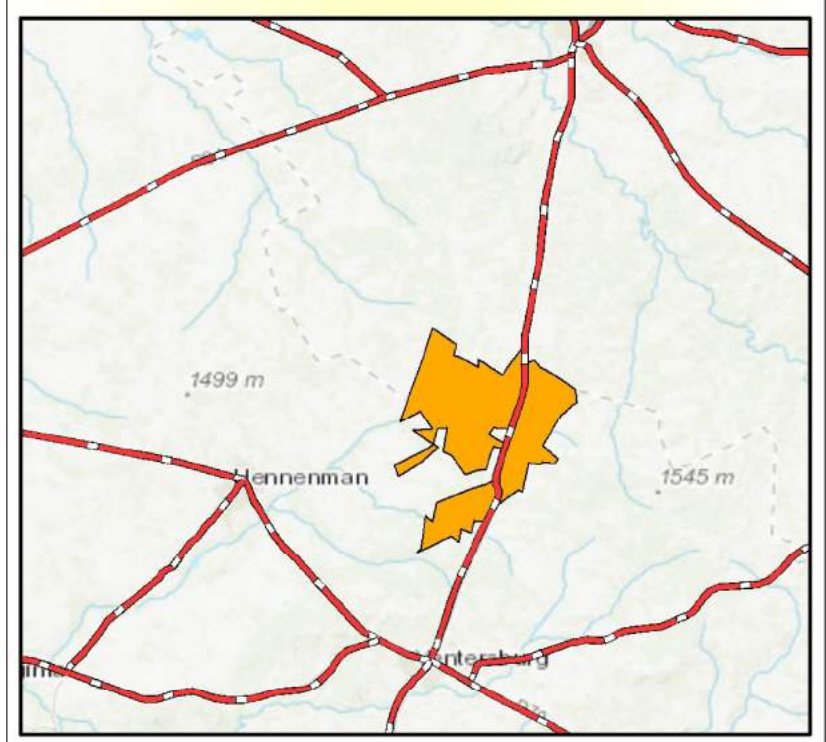


Land Use Cover

Ventersburg Consolidated

- Drillholes
- Provincial Roads
- ▭ Project Area

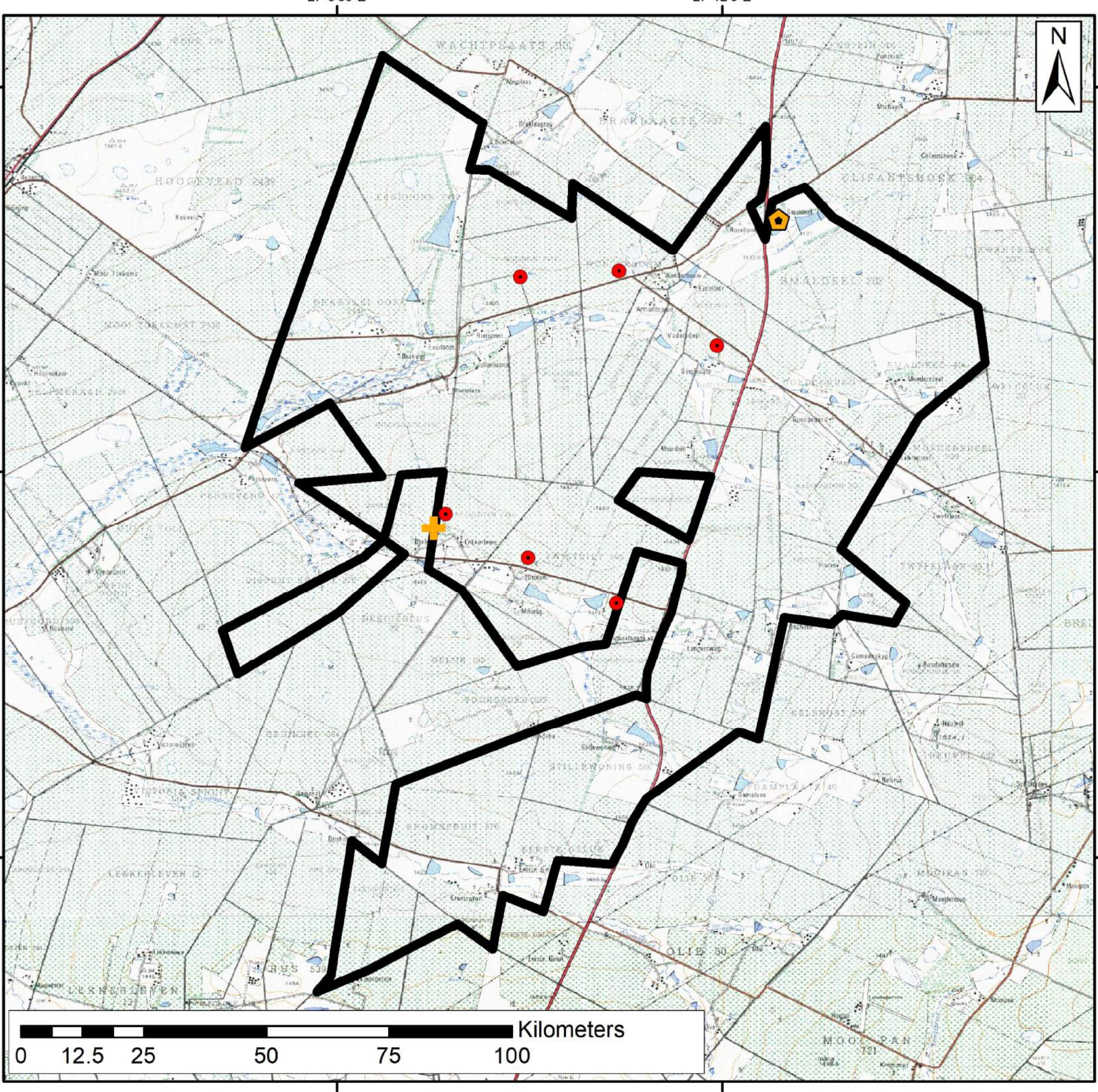
Source:
South African National Biodiversity Institute (SANBI)



Coord System: GCS WGS 1984
Datum: WGS 1984
Units: Degrees

Prepared by:

Shango Solutions
Excellence and Innovation in the Resources Industry

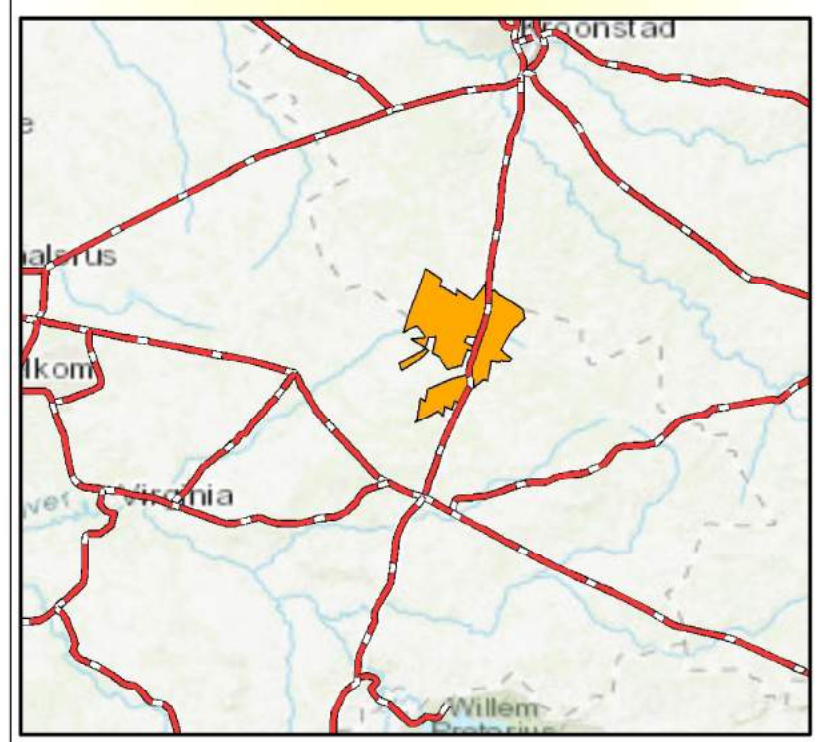


Culture and Heritage

Venterburg Consolidated

-  Building
-  Grave Site
-  Drillholes
-  Project Area

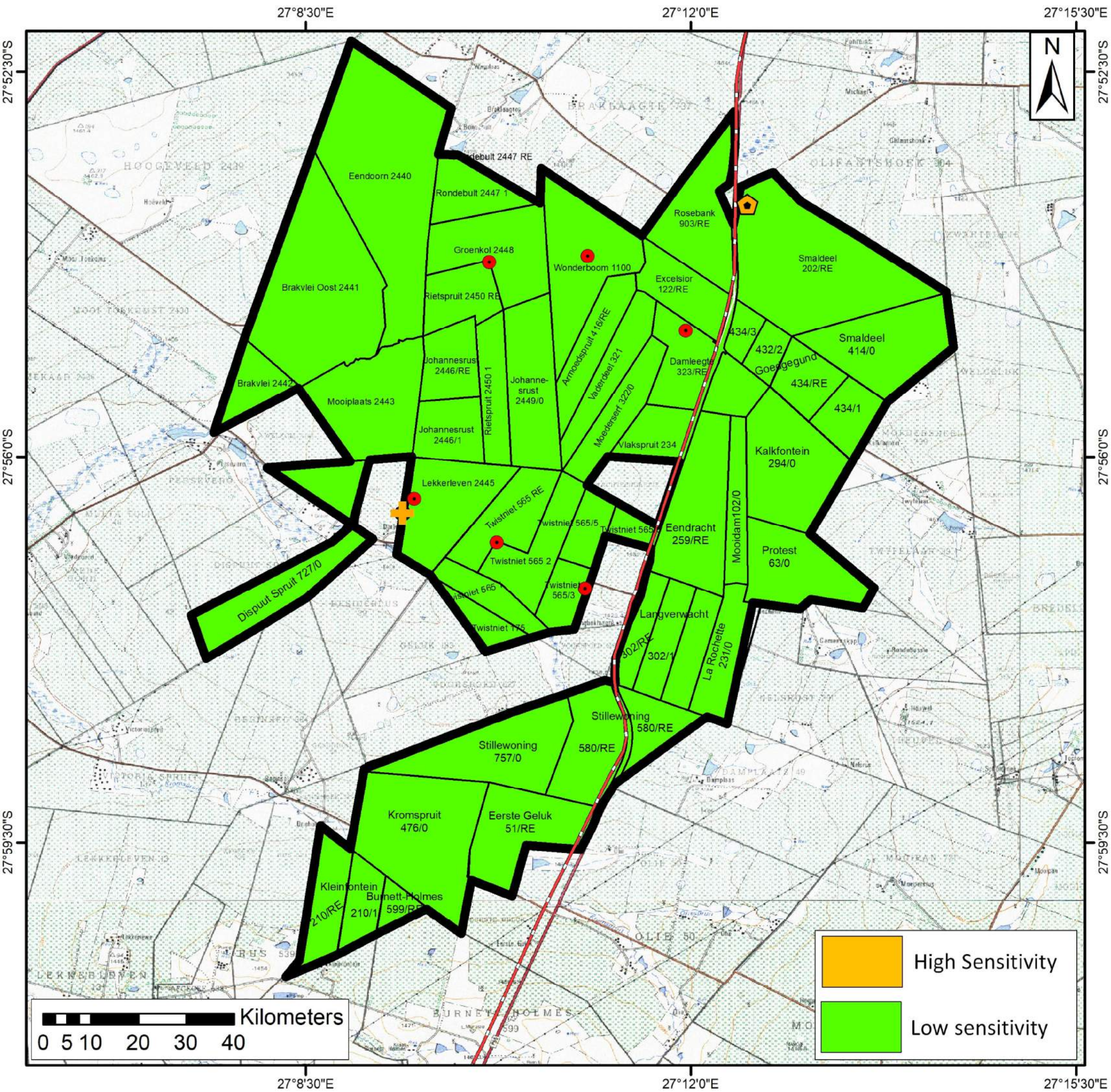
Source:
 NGT Heritage Impact Assessment
 Specialist Report (2018)



Coord System: GCS WGS 1984
 Datum: WGS 1984
 Units: Degrees

Prepared by:



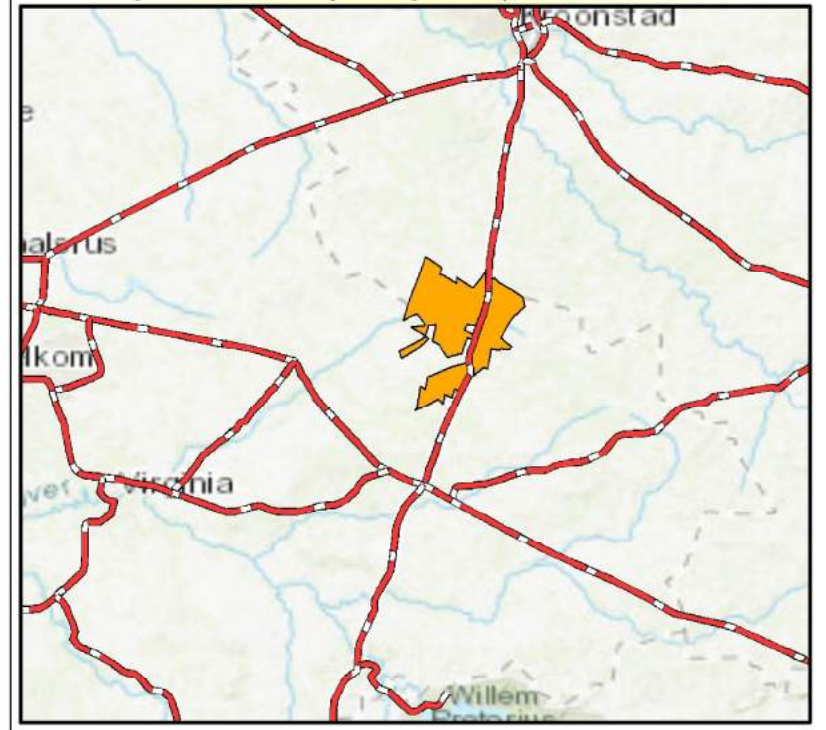


Culture and Heritage Sensitivity

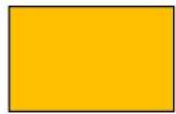

Ventersburg Consolidated

-  Building
-  Grave Site
-  Drillholes
-  Roads
-  Project Area

Source:
 NGT Heritage Impact Assessment Specialist Report (2018)



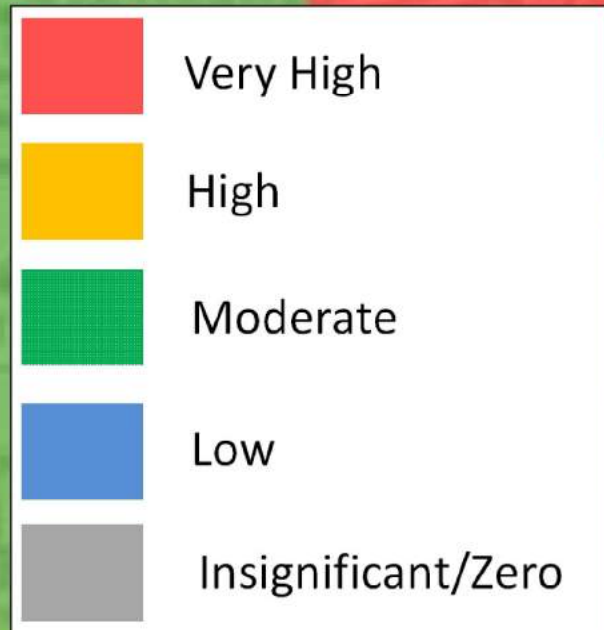
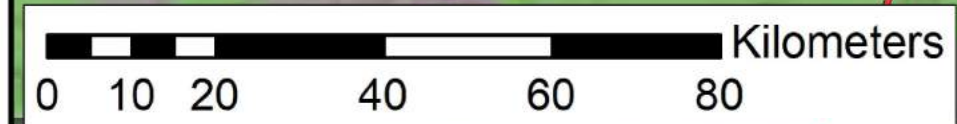
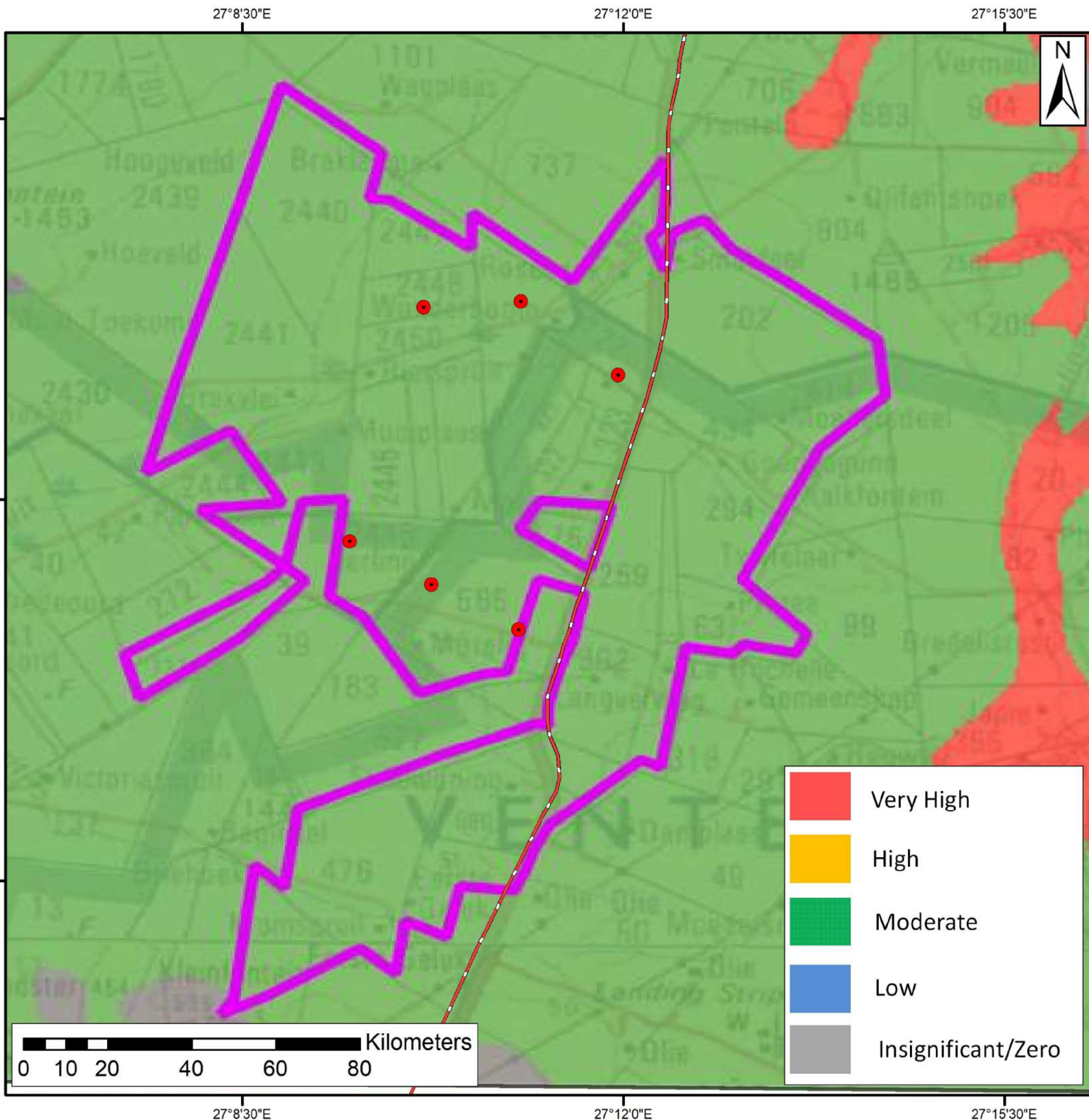
Coord System: GCS WGS 1984
 Datum: WGS 1984
 Units: Degrees

-  High Sensitivity
-  Low sensitivity

Prepared by:



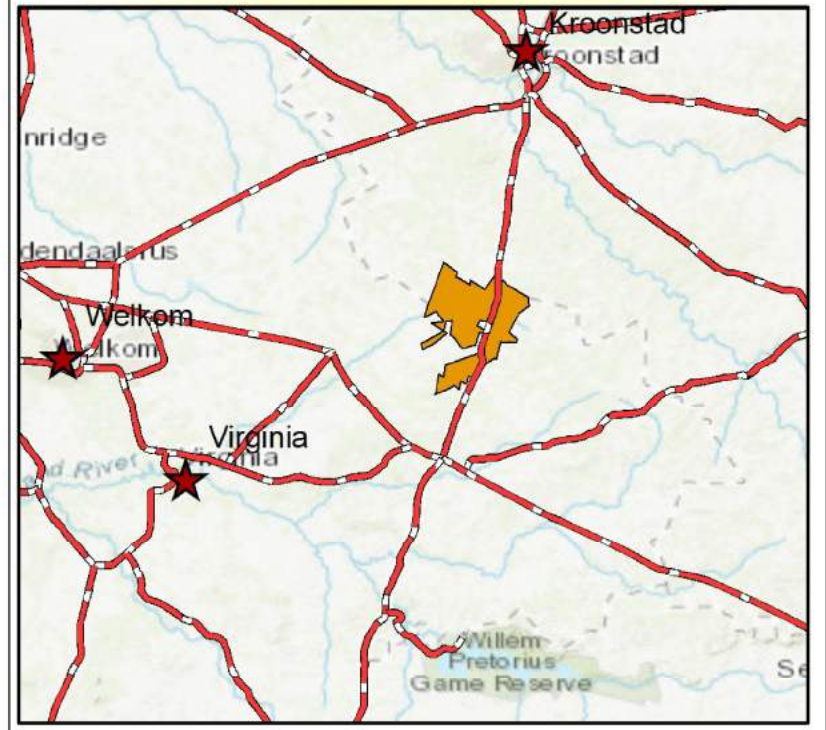
Shango Solutions
 Excellence and Innovation in the Resources Industry



Palaeontological Sensitivity

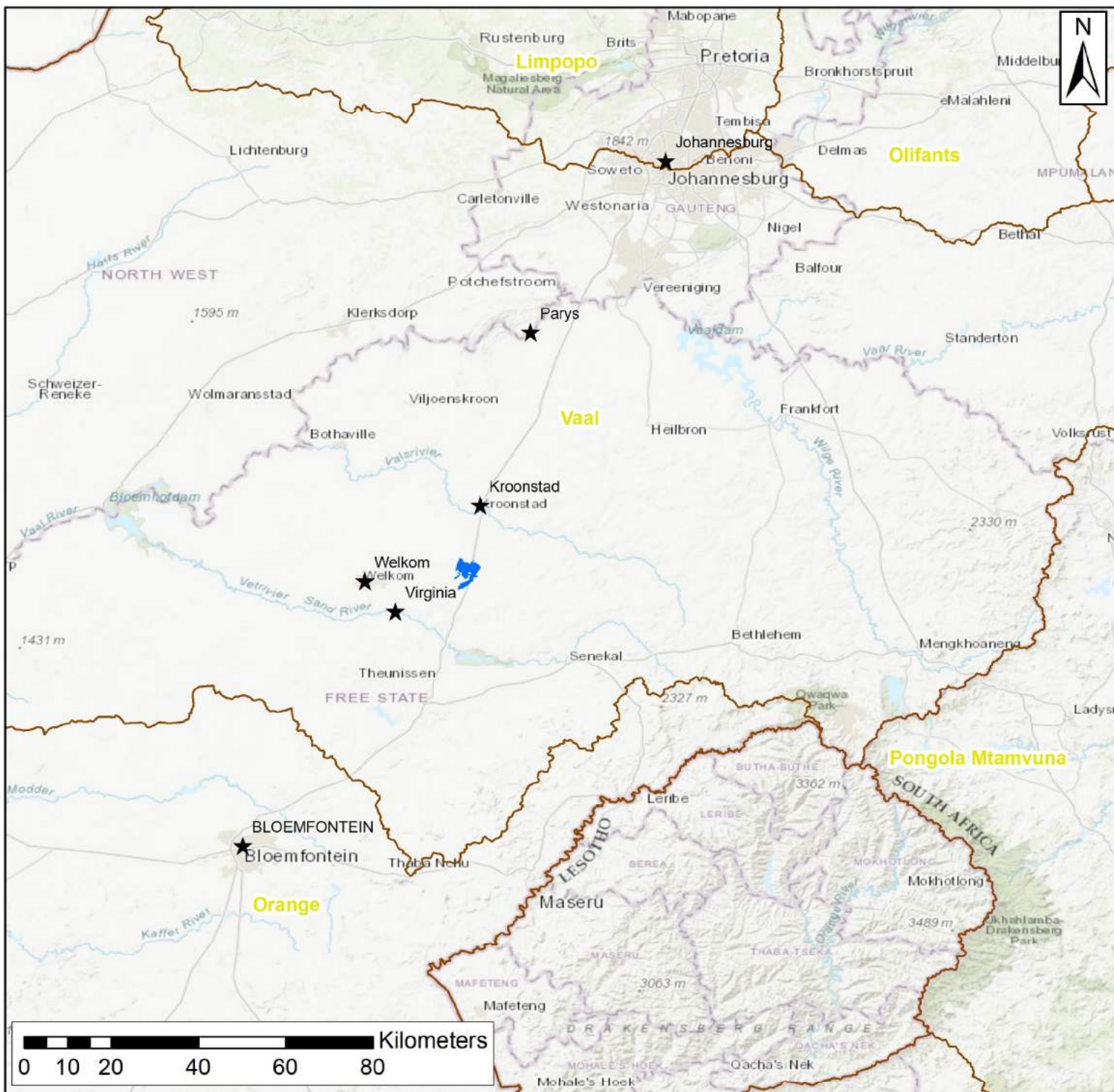
- Ventersburg Consolidated
- Drillholes
 - Roads
 - Project Area

Source:
Heritage Specialist Report



Coord System: GCS WGS 1984
Datum: WGS 1984
Units: Degrees

Prepared by:

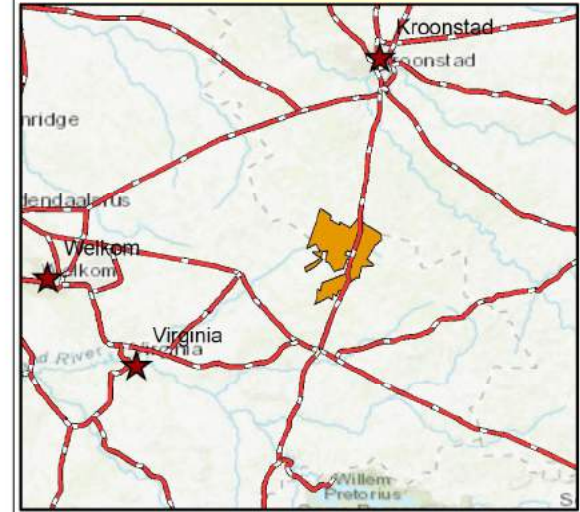


Water Management Areas

Venterburg Consolidated

- ★ Towns
- Water Management Areas
- Project Area

Source:
Department of Water and Sanitation



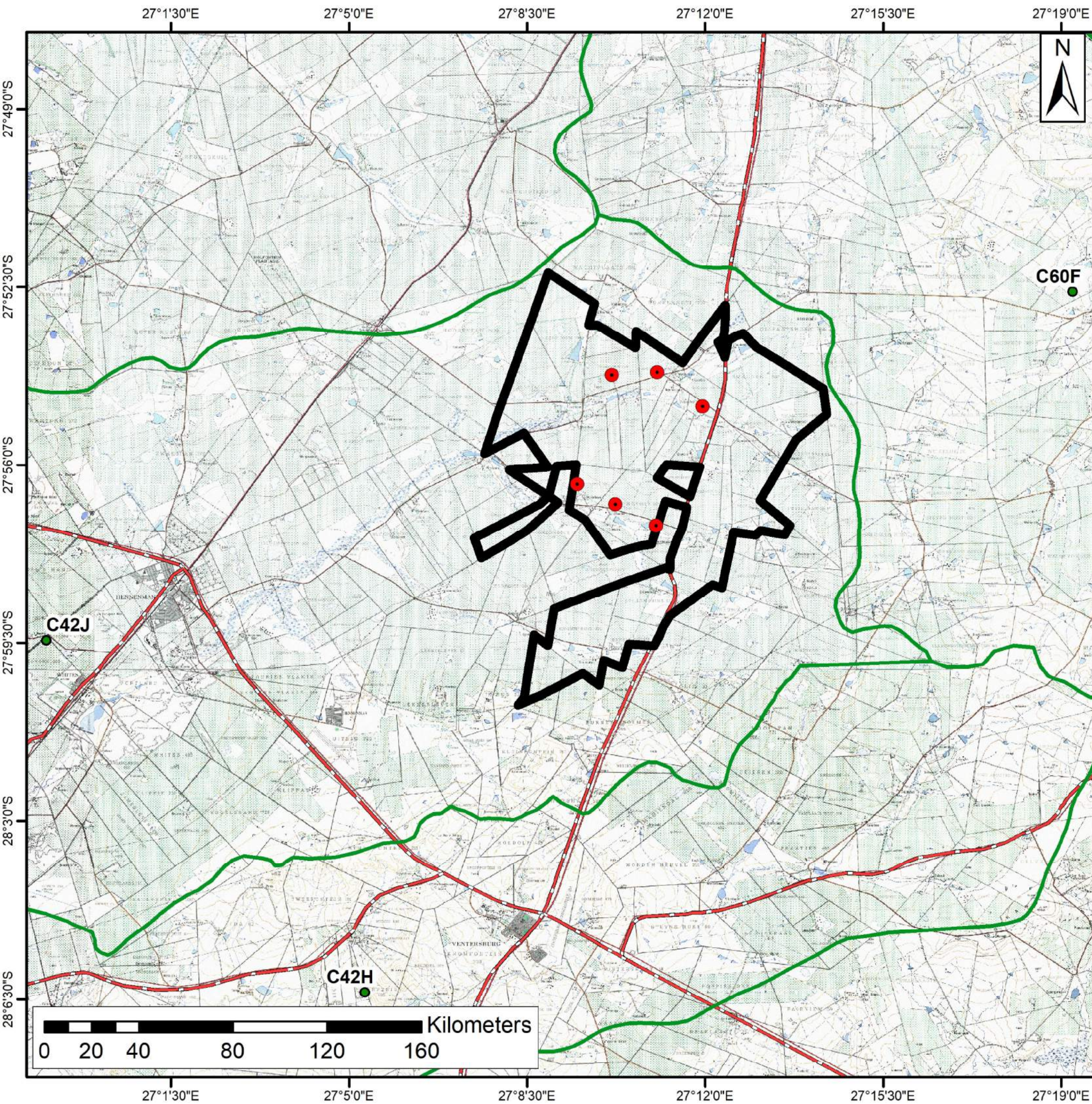
Coord System: WGS 1984

Datum: WGS 1984

Units: Degrees

Prepared by:



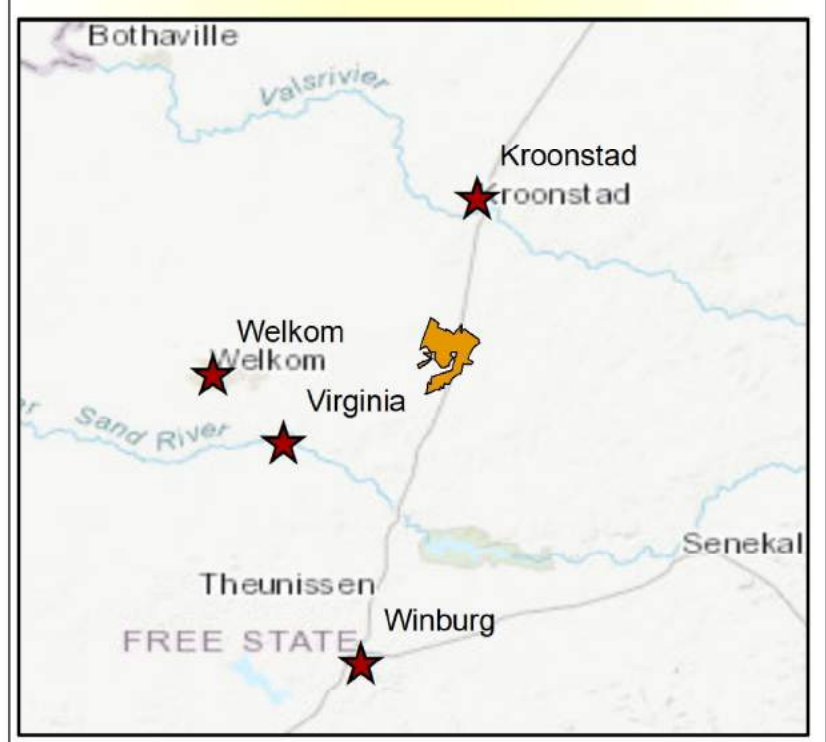


Quaternary Catchments

Ventersburg Consolidated

- Drillholes
- Quaternaries Boundary
- Roads
- Project Area

Source:
Department of Water and Sanitation

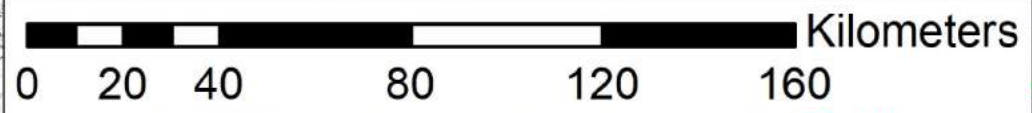


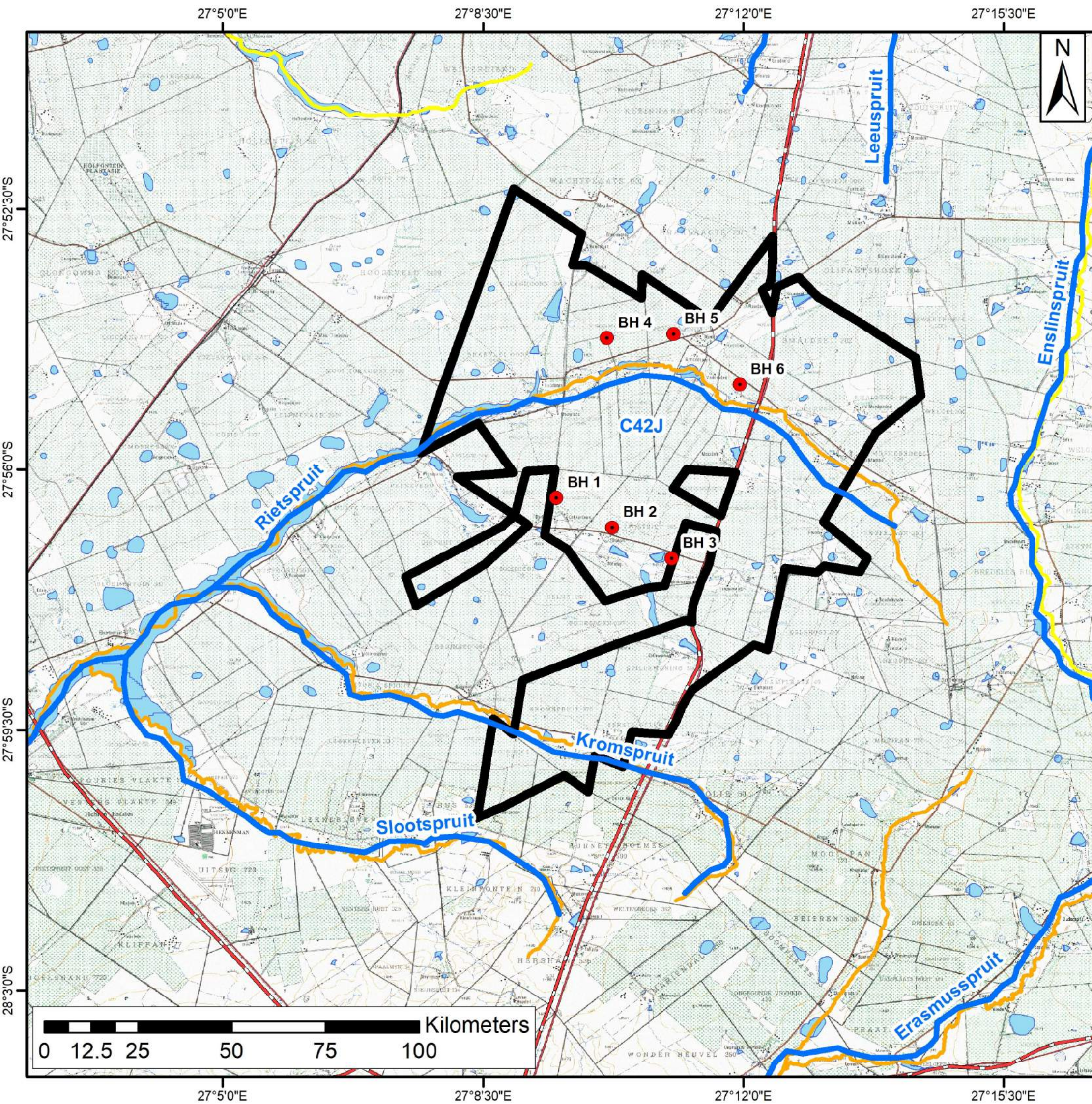
Coord System: GCS WGS 1984

Datum: WGS 1984

Units: Degrees

Prepared by:



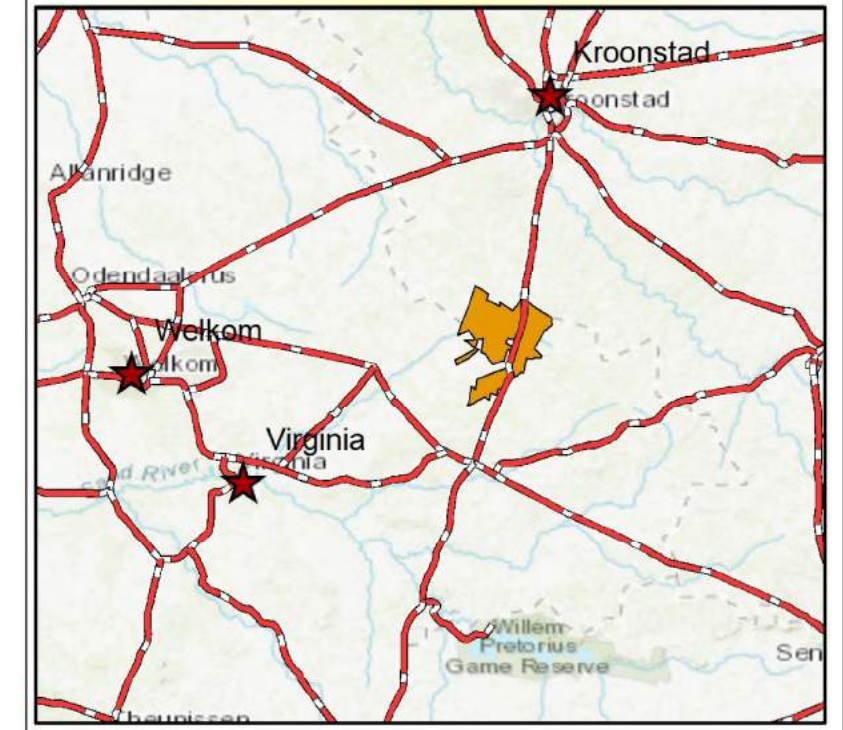


Wetlands

Ventersburg Consolidated

- Drillholes
- Perennial Rivers
- Roads
- NFEPA Rivers (PES1999)**
- CLASS A: UNMODIFIED, NATURAL
- CLASS B: LARGELY NATURAL
- CLASS C: MODERATELY MODIFIED
- CLASS D: LARGELY MODIFIED
- CLASS E - F: NOT AN ACCEPTABLE
- NFEPA Wetlands
- Project Area

Water Management Area:
Vaal (C42J Quaternary Catchment)



Coord System: GCS WGS 1984
 Datum: WGS 1984
 Units: Degrees
 Source: NFEPA Wetland Map

Prepared by:



Shango Solutions
Excellence and Innovation in the Resources Industry

27°5'0"E

27°8'30"E

27°12'0"E

27°15'30"E

27°52'30"S

27°52'30"S

27°56'0"S

27°56'0"S

27°59'30"S

27°59'30"S

28°3'0"S

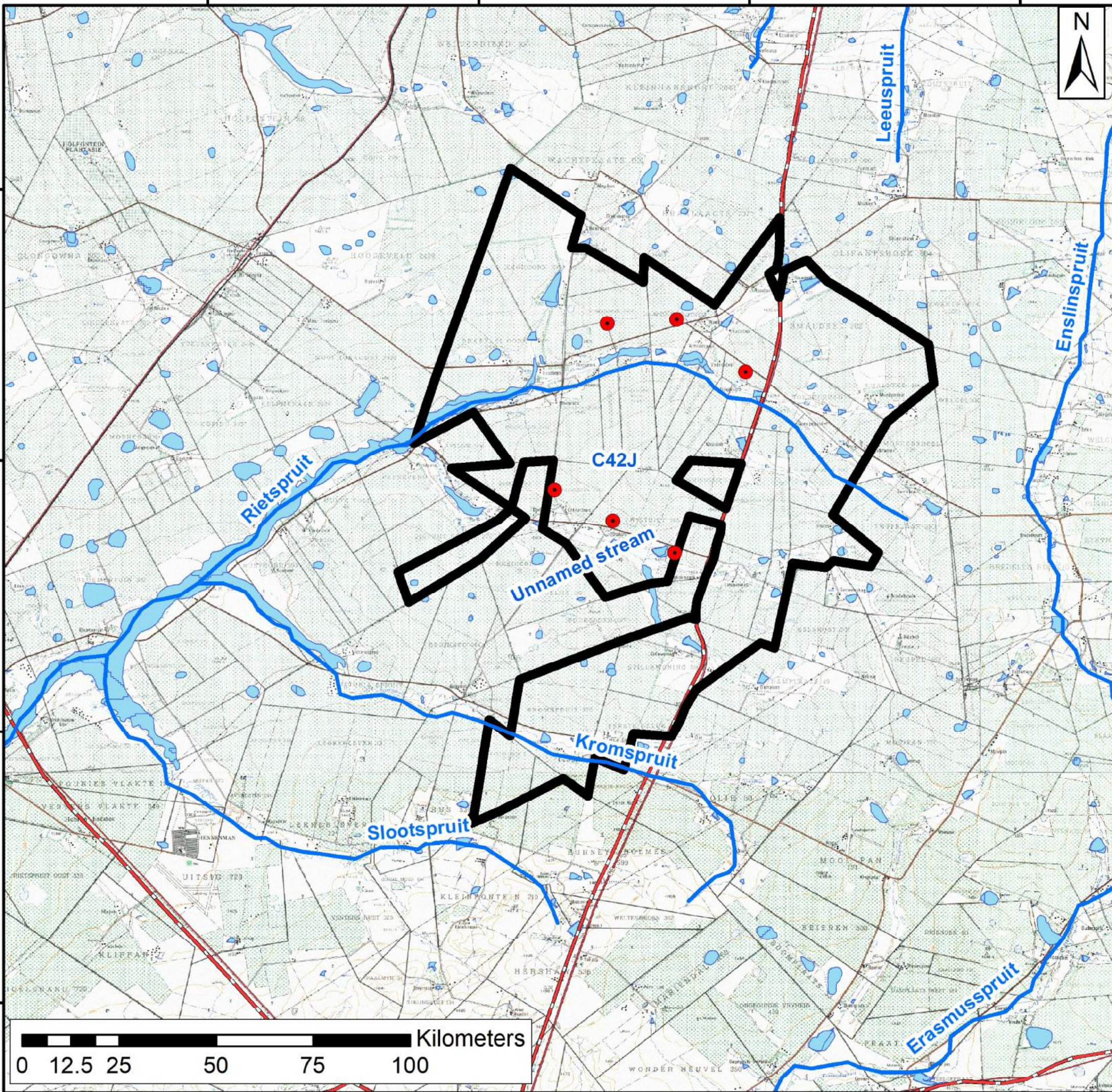
28°3'0"S

27°5'0"E

27°8'30"E

27°12'0"E

27°15'30"E

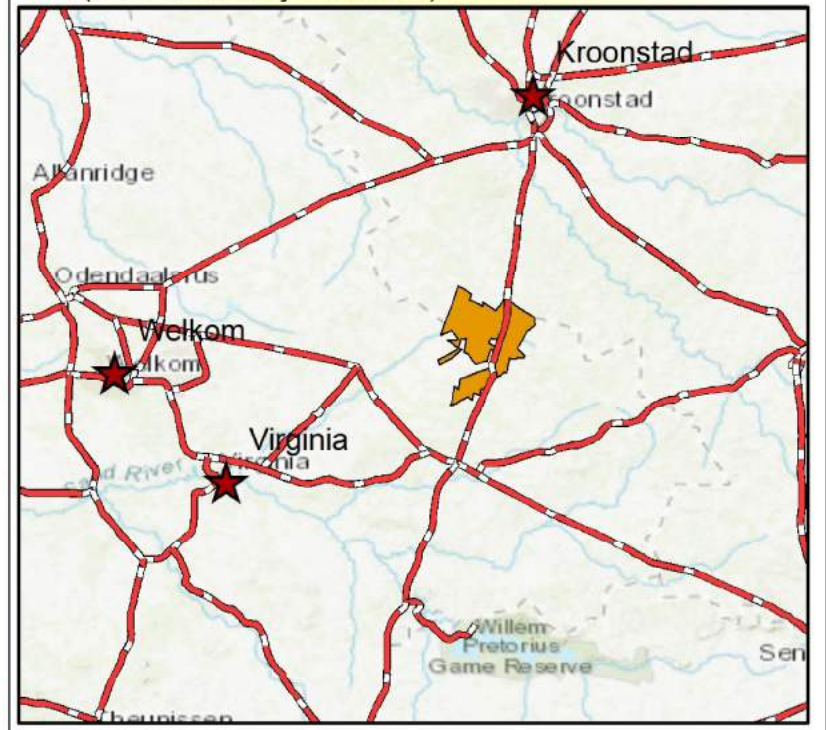


Wetland Delineation

Ventersburg Consolidated

- Drillholes
- Perennial Rivers
- Project Area
- Roads
- NFEPA Wetlands

Water Management Area:
Vaal (C42J Quaternary Catchment)



Coord System: GCS WGS 1984

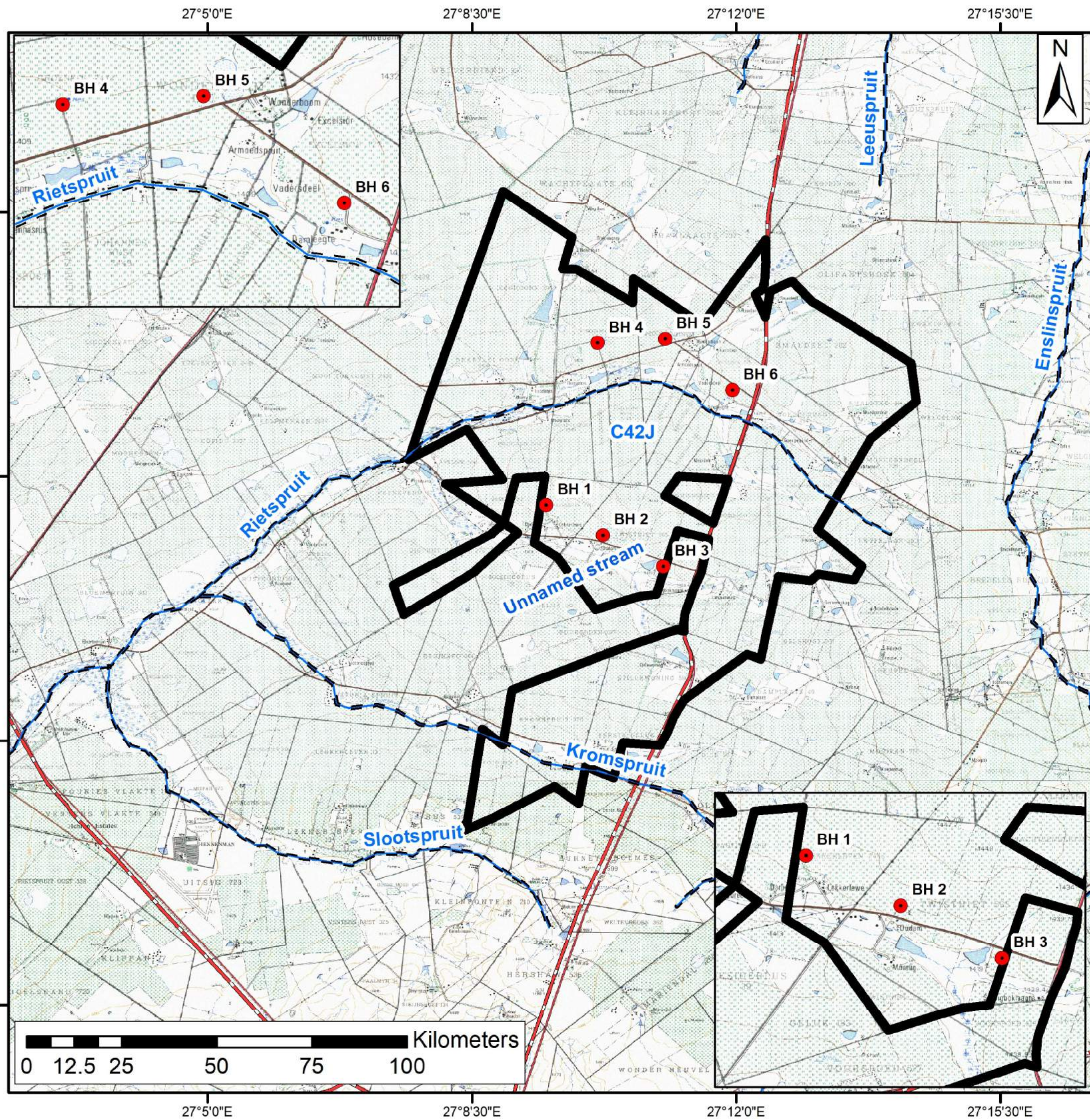
Datum: WGS 1984

Units: Degrees

Source: NFEPA Wetland Map

Prepared by:



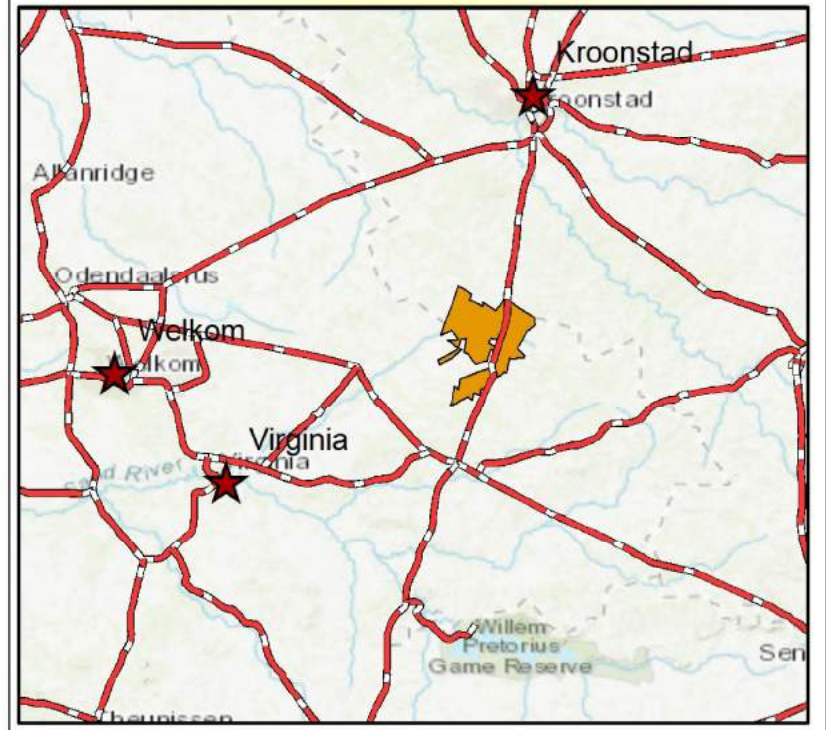


Wetland 32m Buffer

Ventersburg Consolidated

- Drillholes
- Perennial Rivers
- Roads
- 32m Buffer
- Project Area

Water Management Area:
Vaal (C42J Quaternary Catchment)



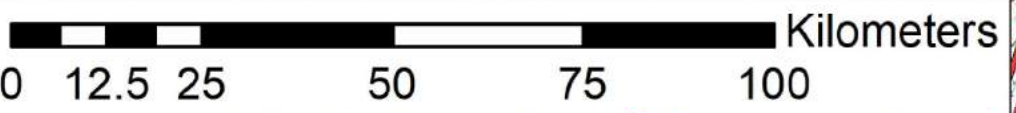
Coord System: GCS WGS 1984

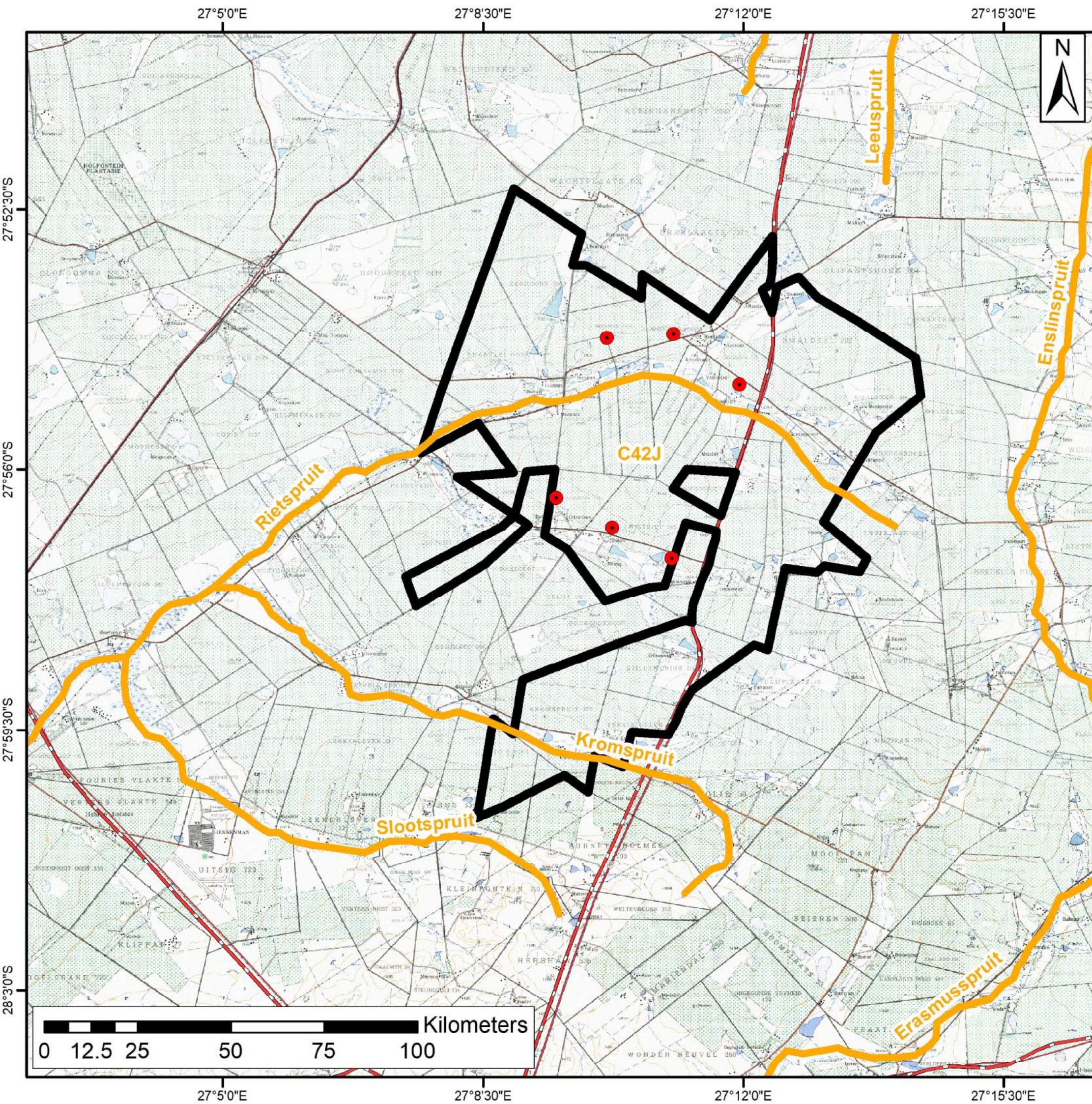
Datum: WGS 1984

Units: Degrees

Source: NFEPA Wetland Map

Prepared by:



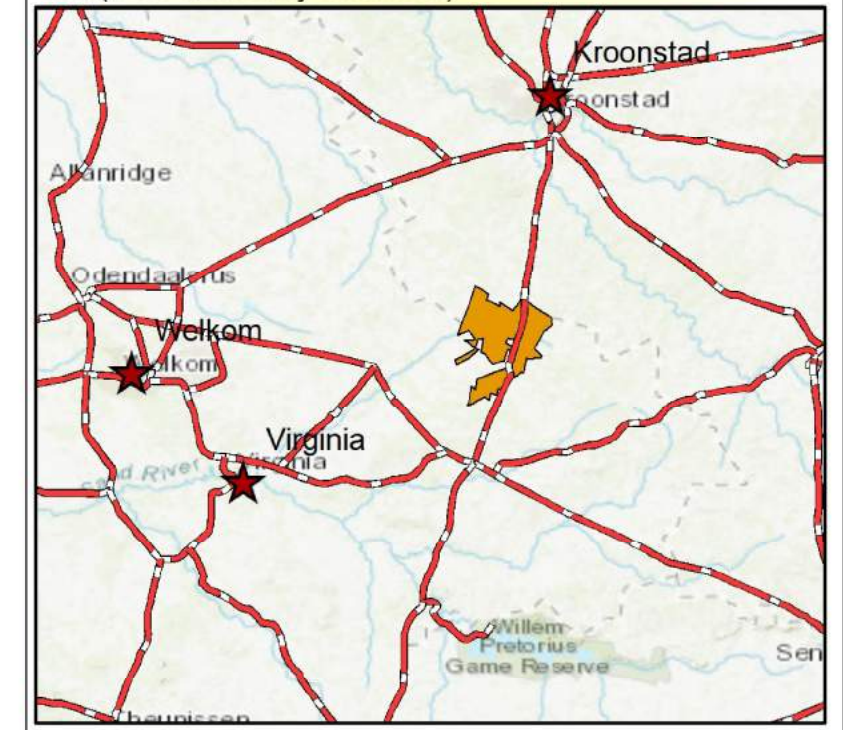


Wetland Sensitivity

Ventersburg Consolidated

- Drillholes
- High Sensitivity
- Project Area
- Roads

Water Management Area:
Vaal (C42J Quaternary Catchment)



Coord System: GCS WGS 1984

Datum: WGS 1984

Units: Degrees

Source: NFEPA Wetland Map

Prepared by:



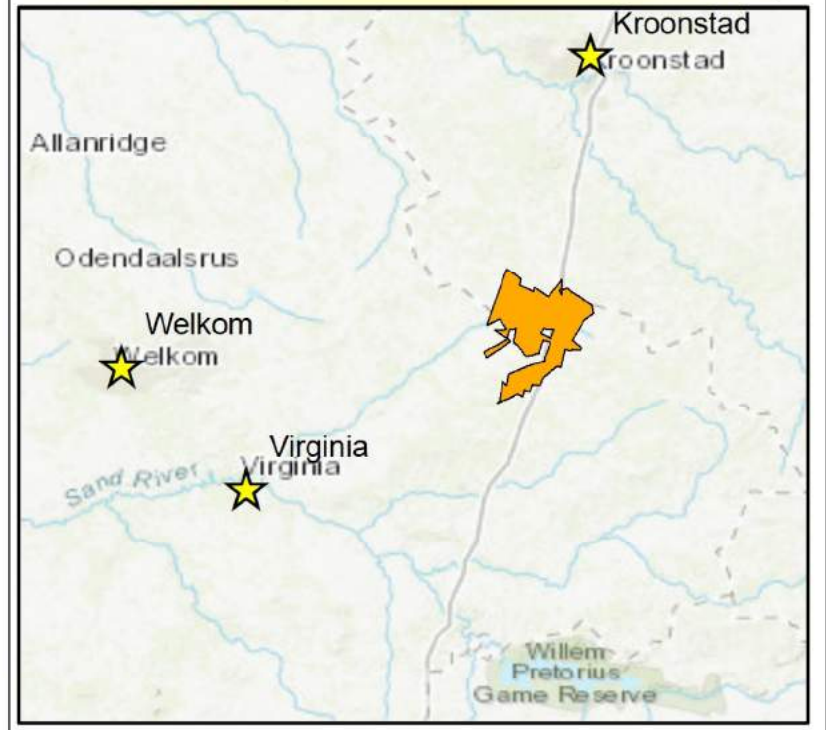


Vegetation

Ventersburg Consolidated

- Drillholes
- Project Area
- Gh 10 Vaal-Vet Sandy Grassland
- Gh6 Central Free State Grassland
- AZi10 Highveld Salt Pans

Source:
Vegetation of South Africa, Lesotho and Swaziland (Mucina and Rutherford 2006)



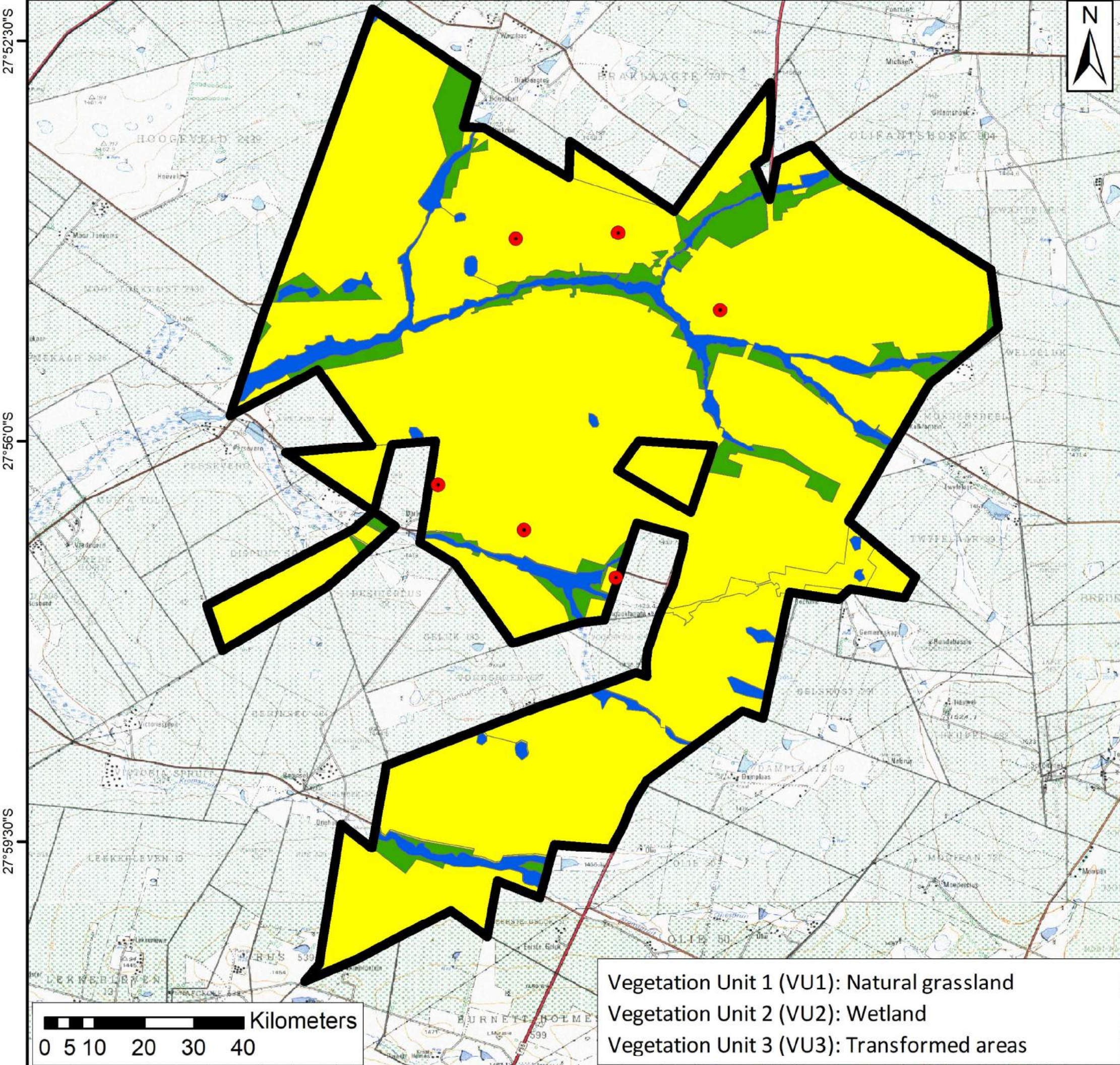
Coord System: GCS WGS 1984
Datum: WGS 1984
Units: Degrees

Prepared by:



27°8'30"E

27°12'0"E

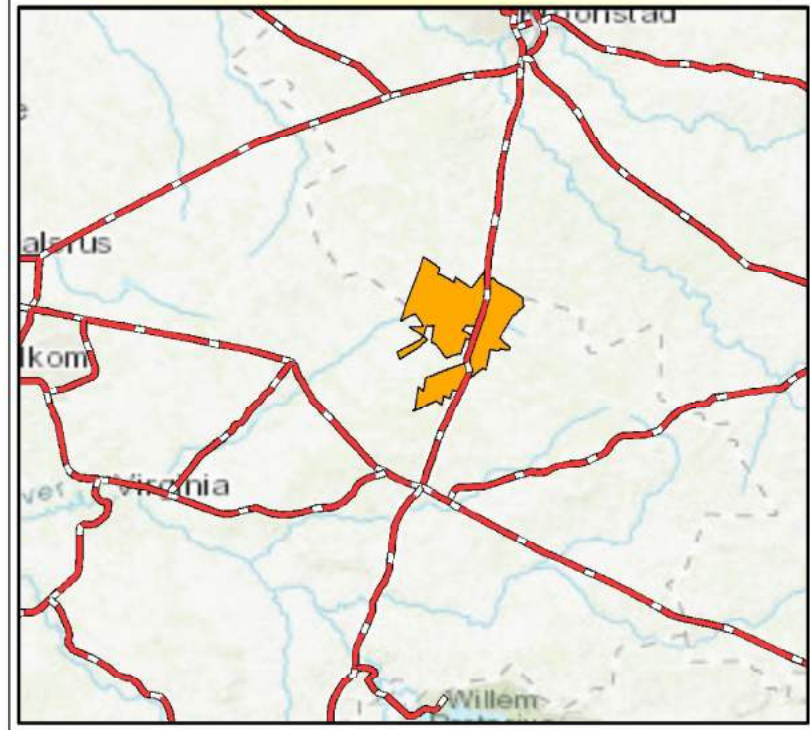


Vegetation Units

Ventersburg Consolidated

- Drillholes
- Project Area
- Vegetation Units**
- VU1
- VU2
- VU3

Source:
Vegetation of South Africa, Lesotho and Swaziland (Mucina and Rutherford 2006)



Coord System: GCS WGS 1984

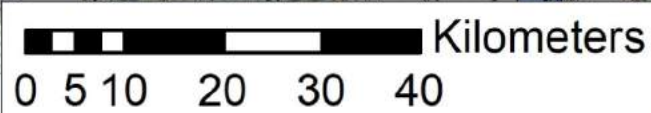
Datum: WGS 1984

Units: Degrees

Prepared by:



Vegetation Unit 1 (VU1): Natural grassland
Vegetation Unit 2 (VU2): Wetland
Vegetation Unit 3 (VU3): Transformed areas



27°8'30"E

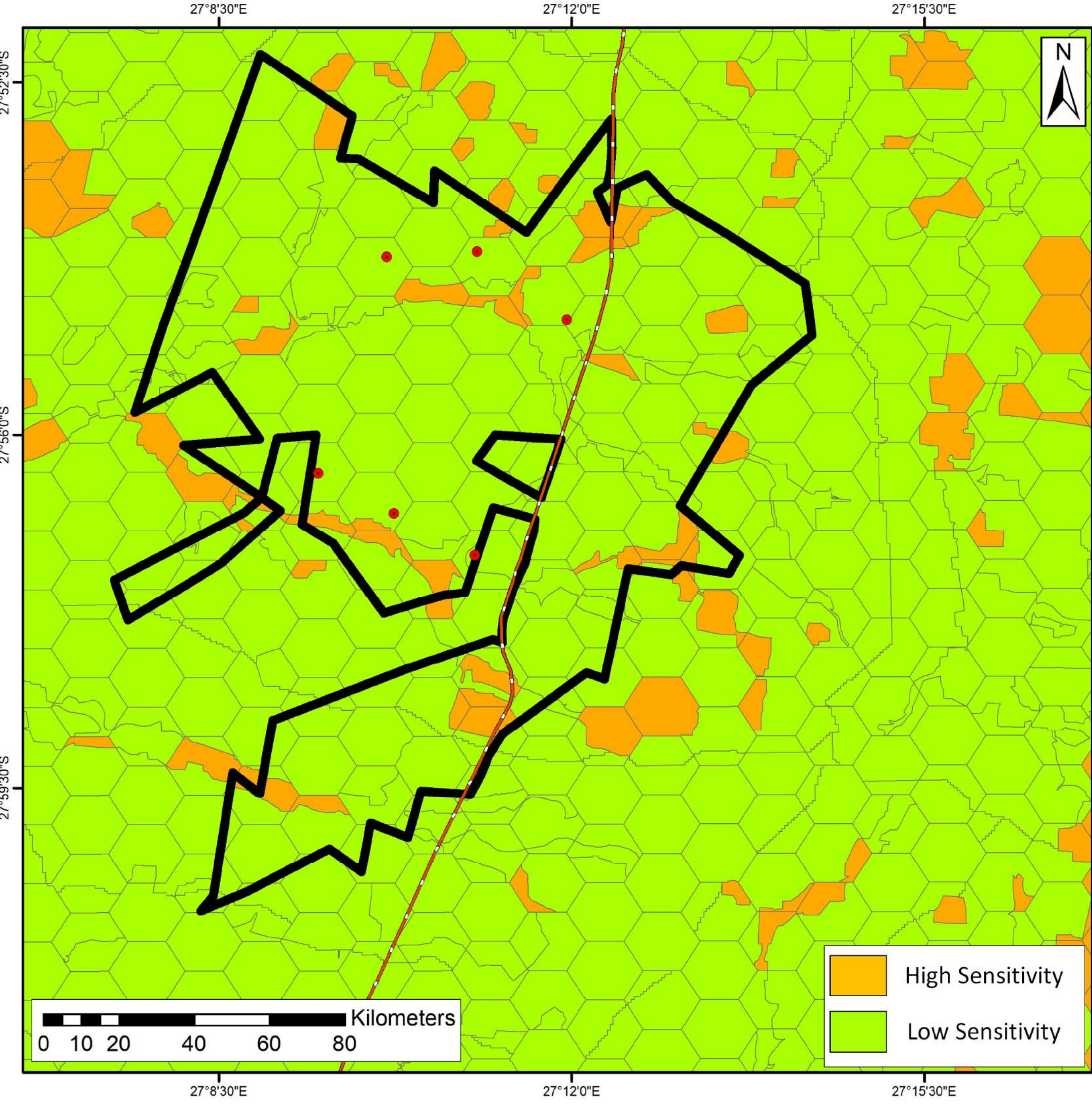
27°12'0"E

27°56'0"S

27°56'0"S

27°59'30"S

27°59'30"S

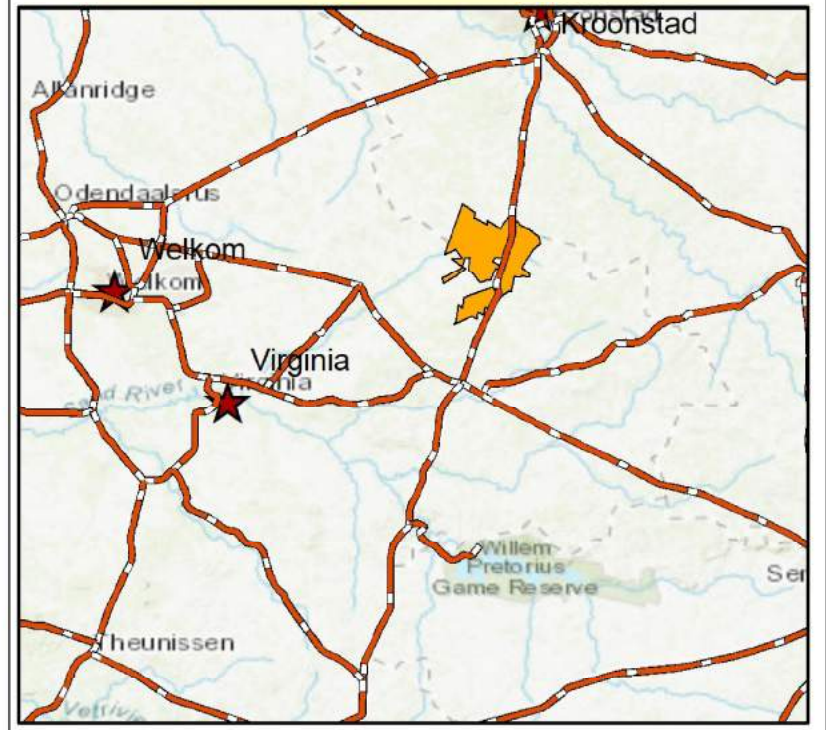


Ecological Sensitivity

Ventersburg Consolidated

- Drillholes
- Provincial Roads
- Project Area

Data Source:
 Department of Economic,
 Small Business Development,
 Tourism and Environmental Affairs (DESTEA)



Coord System: GCS WGS 1984

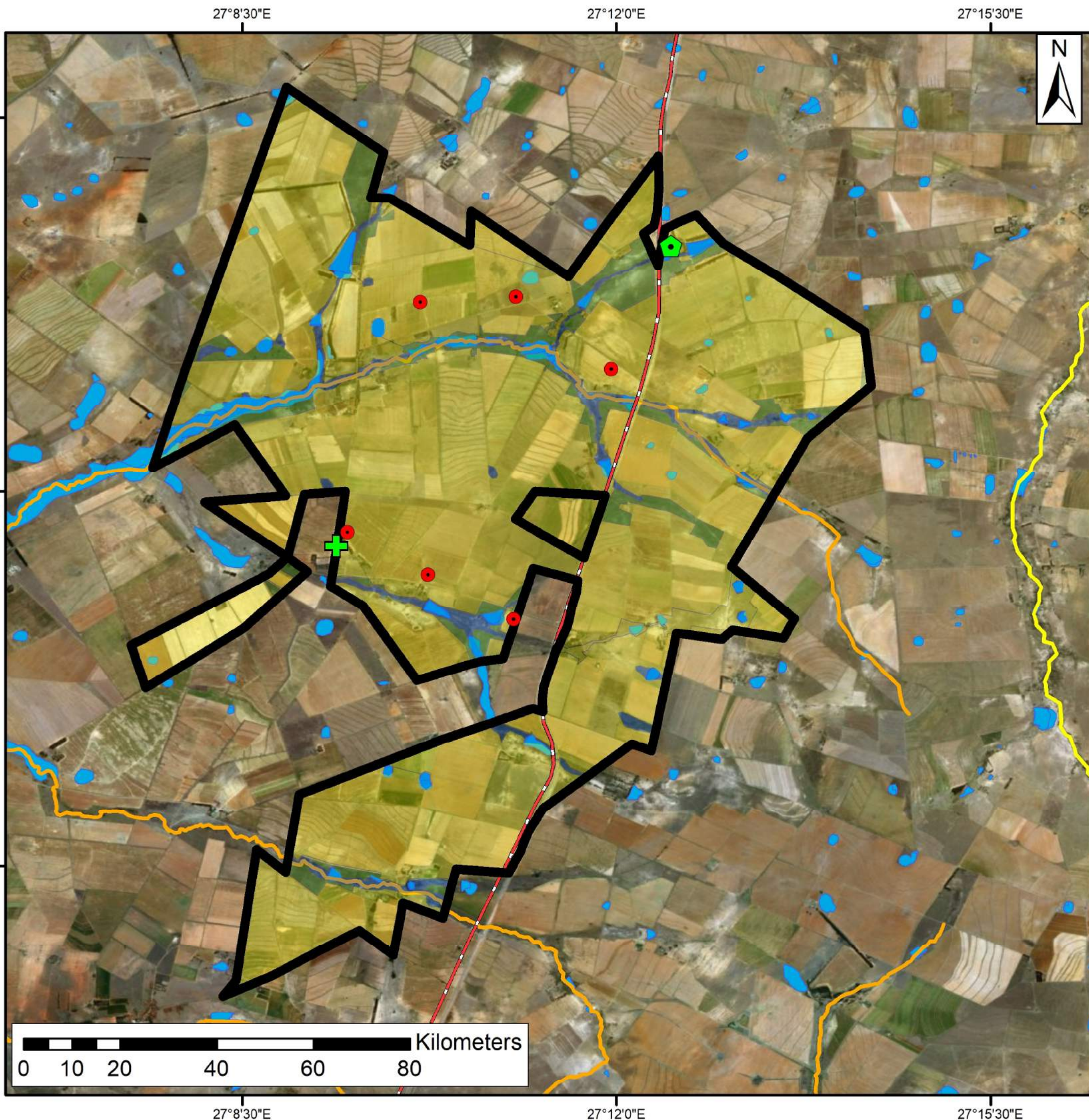
Datum: WGS 1984

Units: Degrees

Prepared by:



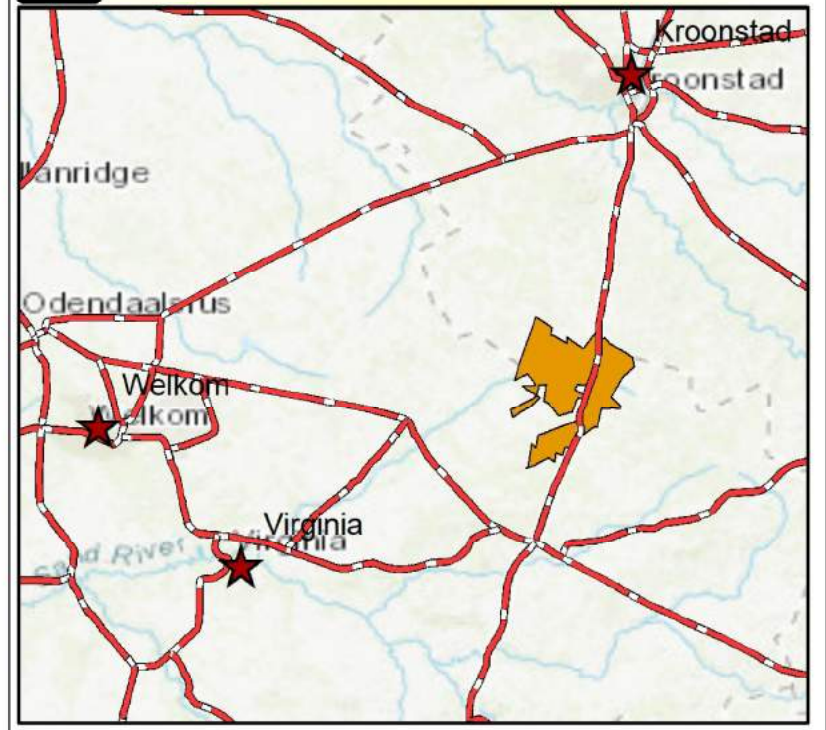
- High Sensitivity
- Low Sensitivity



Composite Map

Ventersburg Consolidated

-  Roads
-  Grave_Site
-  CLASS A: UNMODIFIED, NATURAL
-  CLASS B: LARGELY NATURAL
-  CLASS C: MODERATELY MODIFIED
-  CLASS D: LARGELY MODIFIED
-  CLASS E - F: NOT AN ACCEPTABLE
-  NFEPA Wetlands
-  VU1: Grasslands
-  VU2: Wetlands
-  VU3: Transformed Areas
-  Project Area
-  Building
-  Drillholes

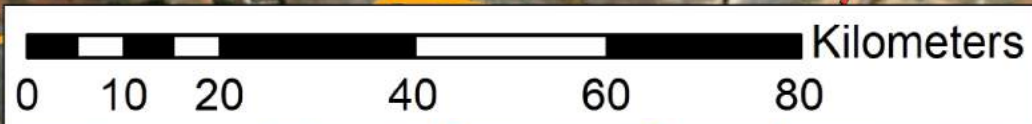


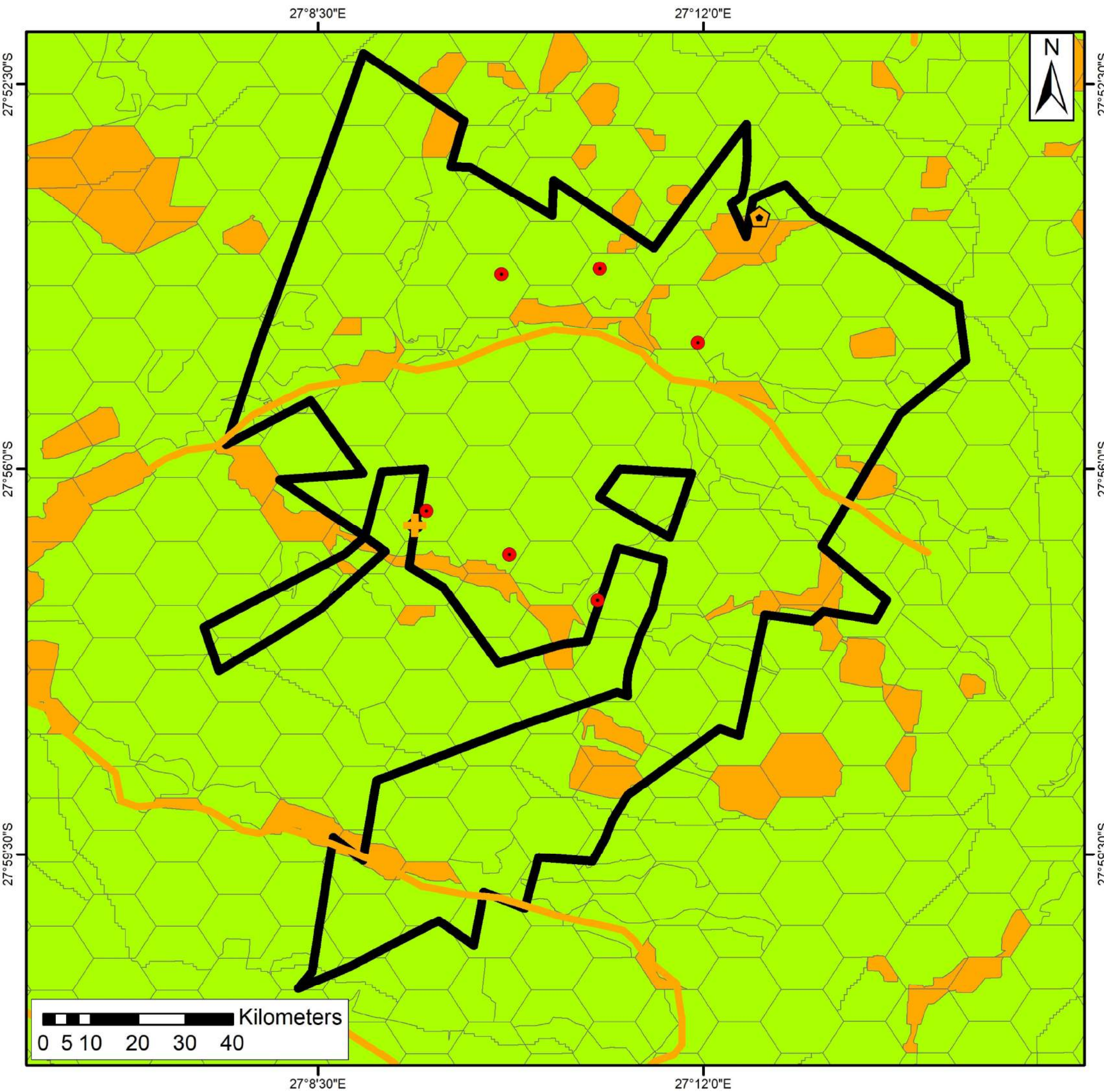
Coord System: GCS WGS 1984
 Datum: WGS 1984
 Units: Degrees

Prepared by:



Shango Solutions
 Excellence and Innovation in the Resources Industry

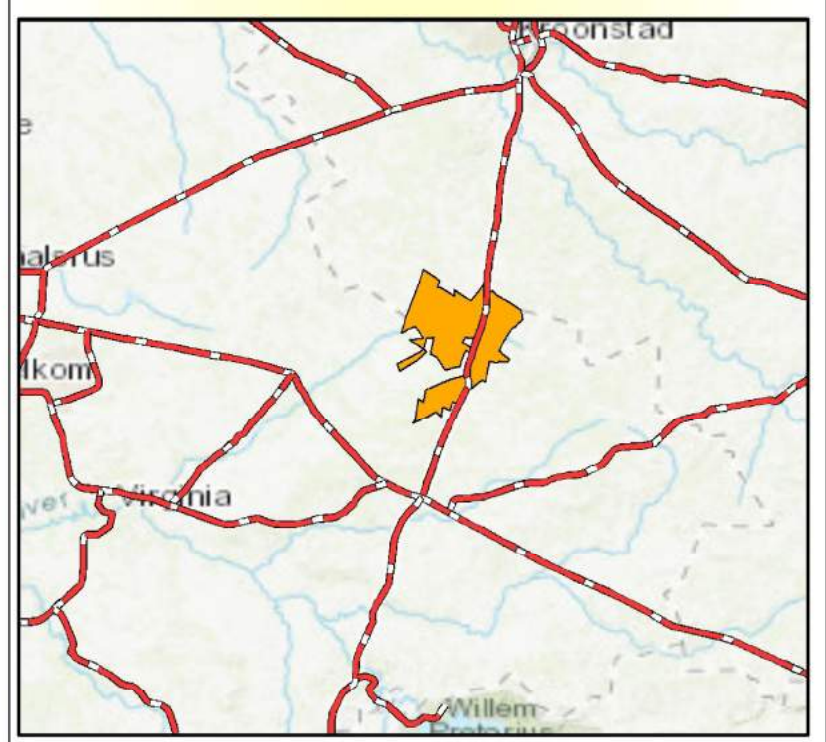




Combined Sensitivity

Venterburg Consolidated

- Drillholes
- Project Area
- High Sensitivity
- Low Sensitivity



Coord System: GCS WGS 1984
 Datum: WGS 1984
 Units: Degrees

Prepared by:

