

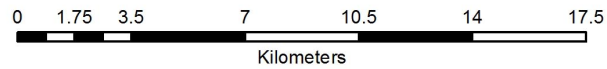
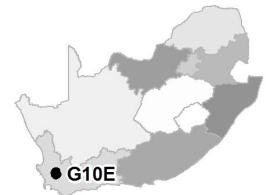


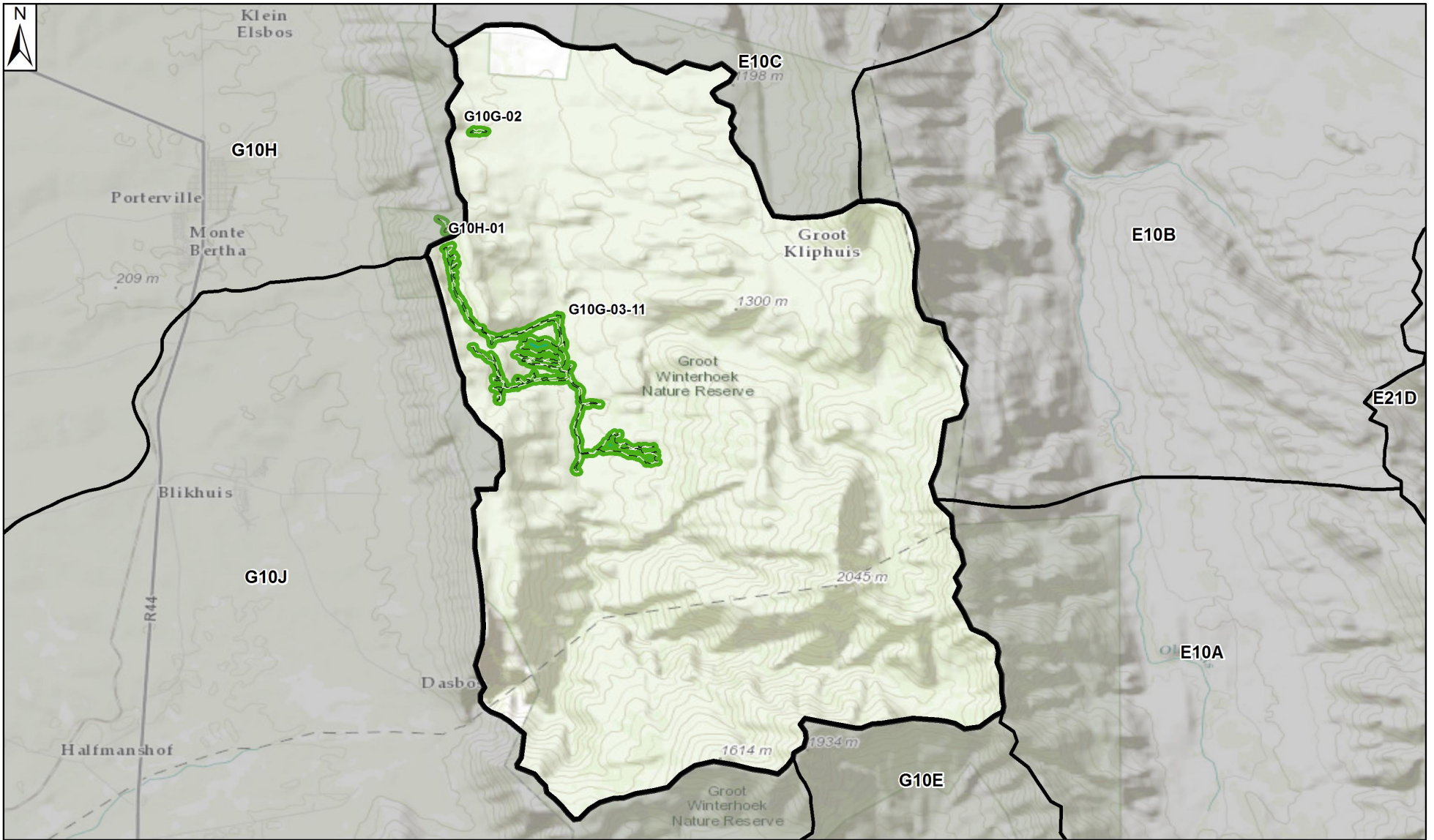
Western Cape - G10E

-  Quaternary Associated with wetland
-  Wetland Boundary





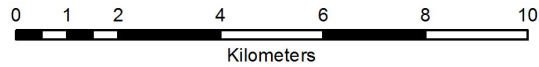
Co ordinate system : Geographic
Datum : WGS84



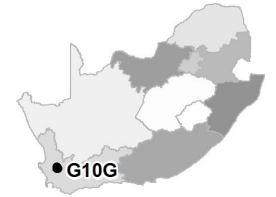


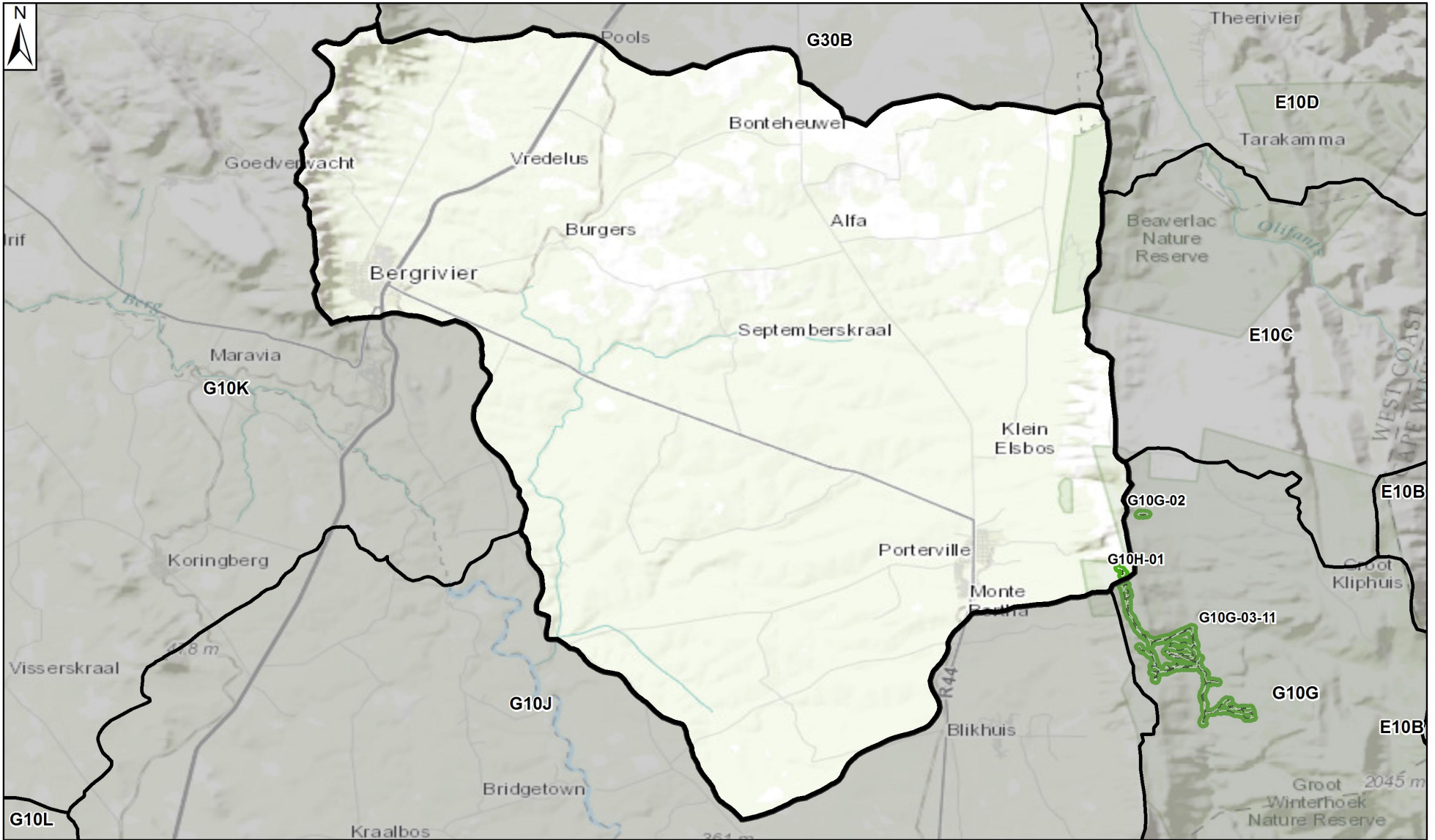
Western Cape - G10G

-  Quaternary Associated with wetland
-  Wetland Boundary





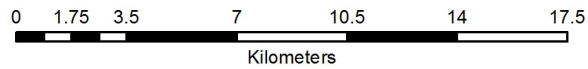
Co ordinate system : Geographic
Datum : WGS84



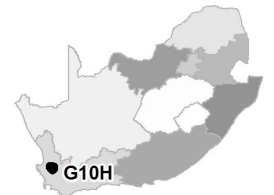


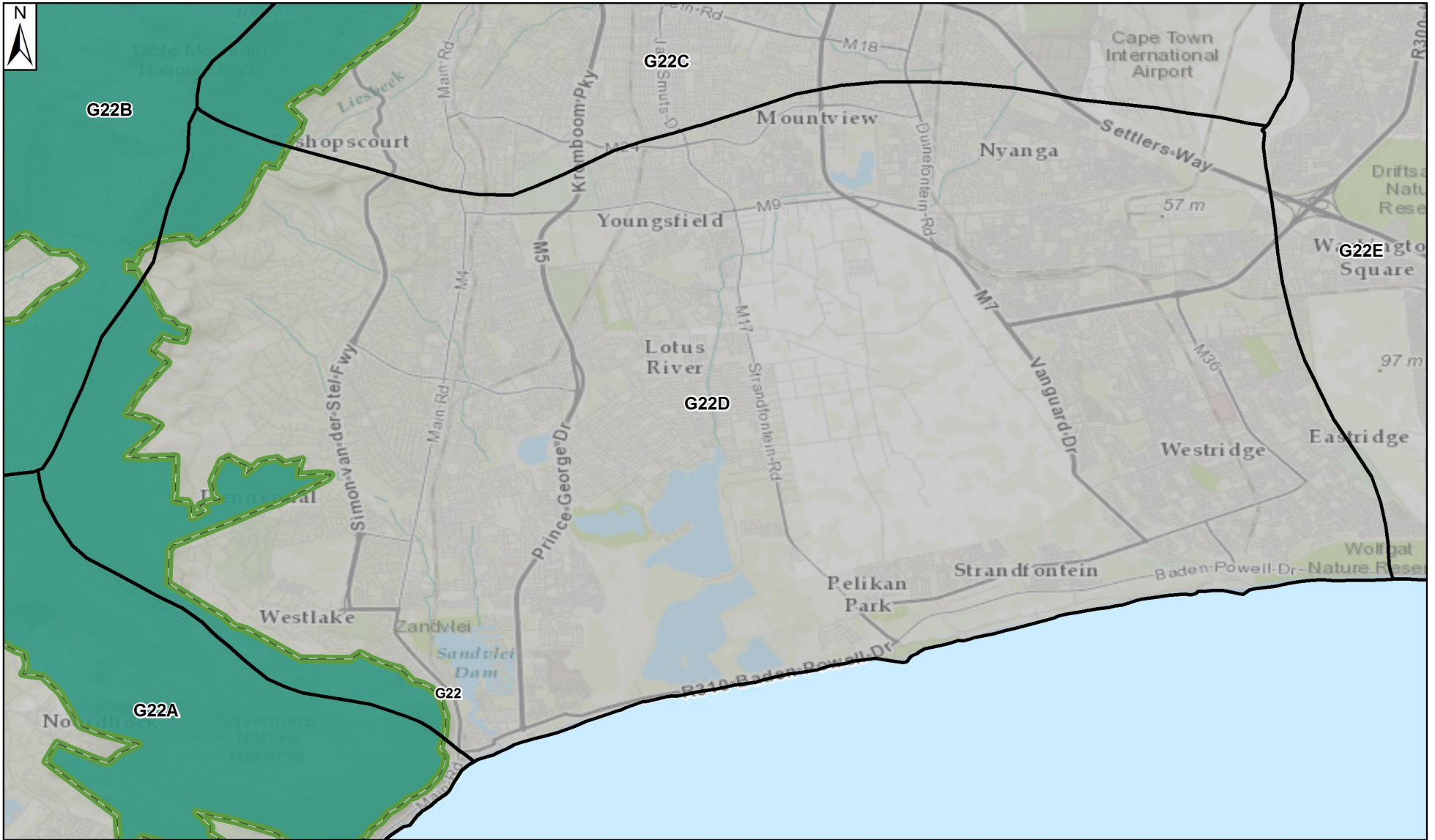
Western Cape - G10H

-  Quaternary Associated with wetland
-  Wetland Boundary





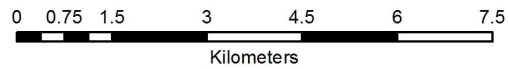
Co ordinate system : Geographic
Datum : WGS84





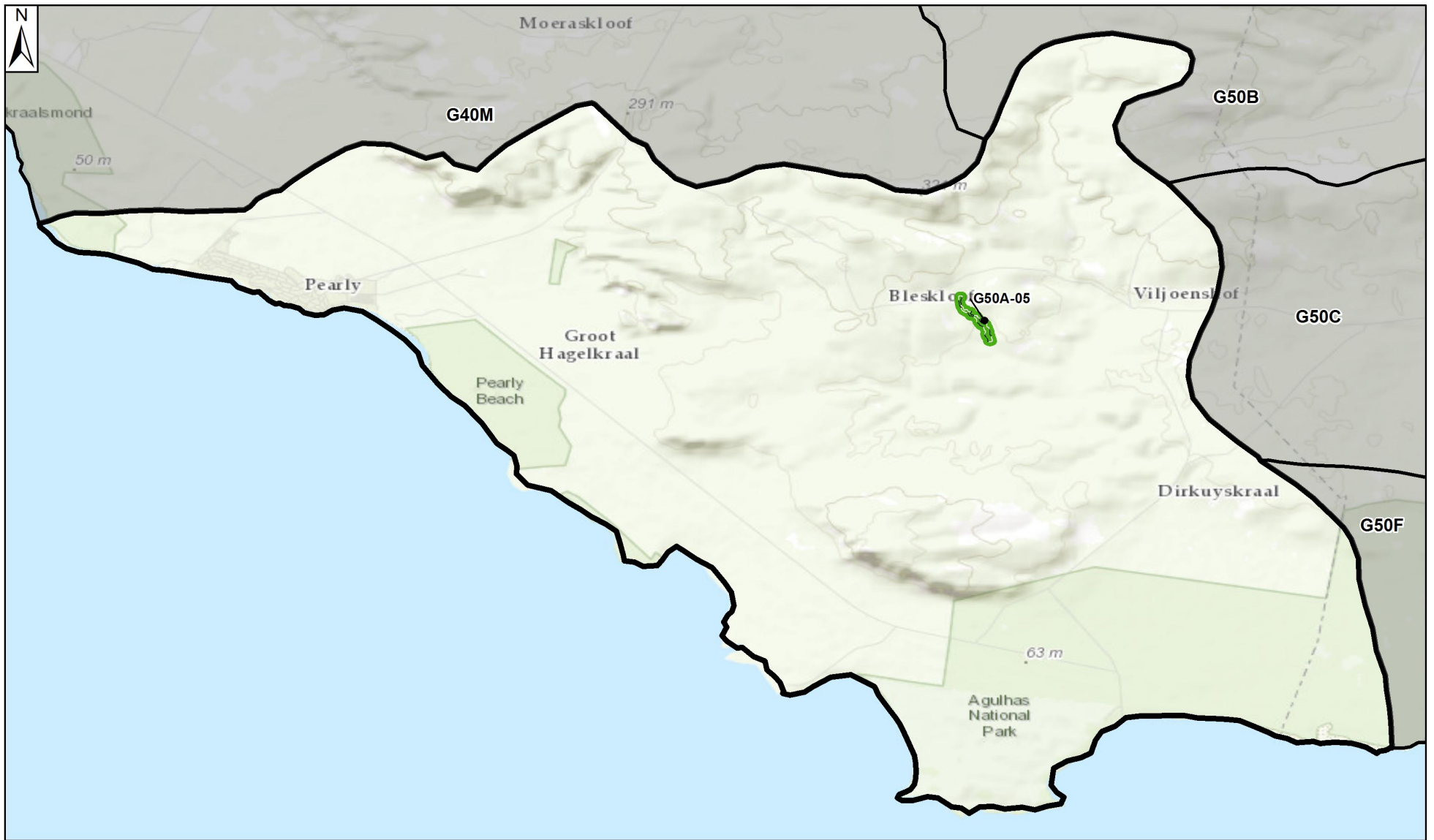
Western Cape - G22D

-  Quaternary Associated with wetland
-  Wetland Boundary





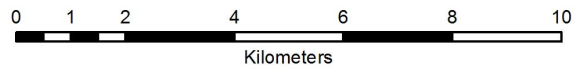
Co ordinate system : Geographic
Datum : WGS84



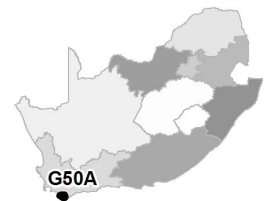


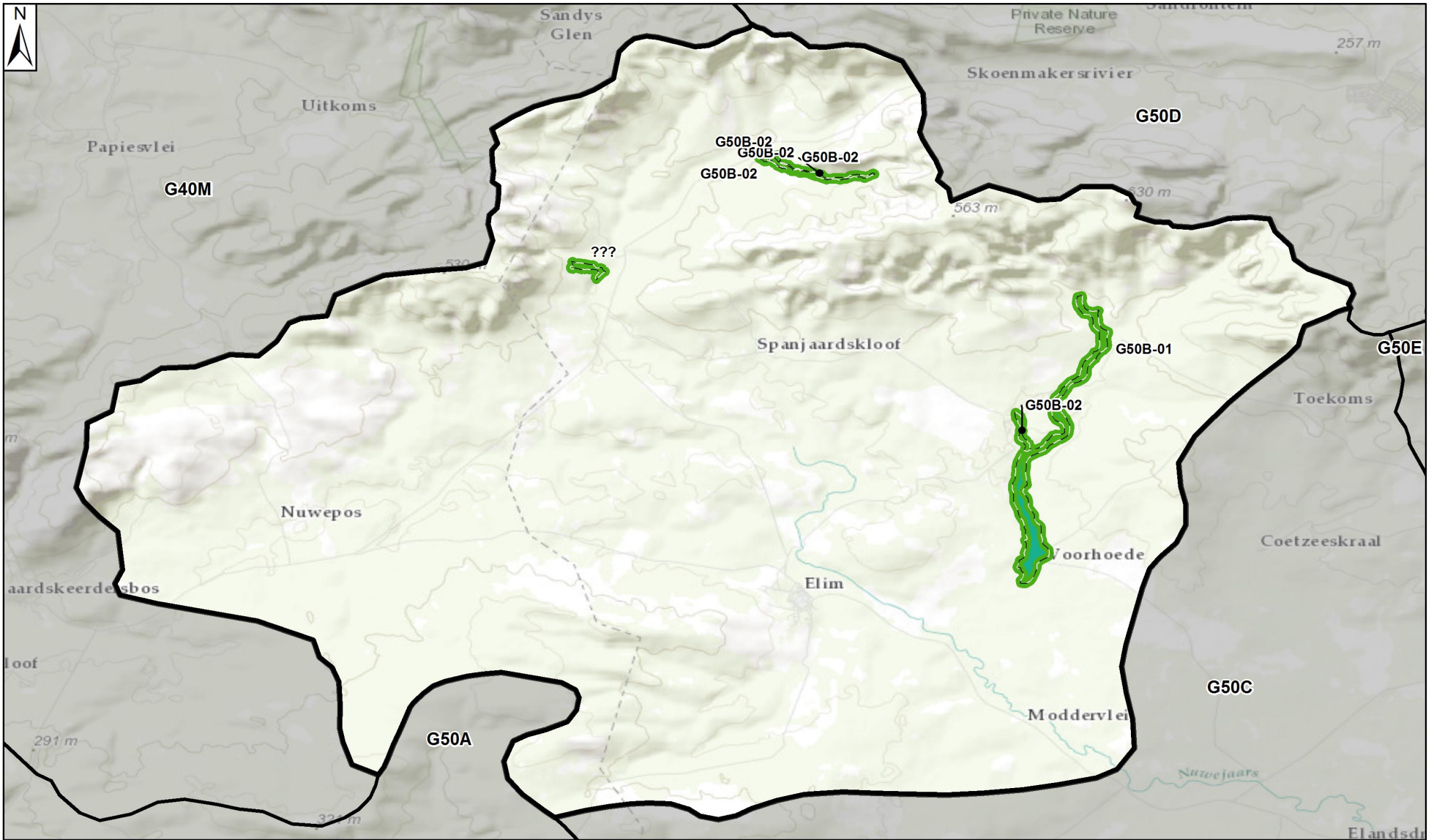
Western Cape - G50A

-  Quaternary Associated with wetland
-  Wetland Boundary





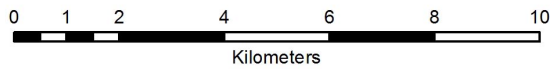
Co ordinate system : Geographic
Datum : WGS84



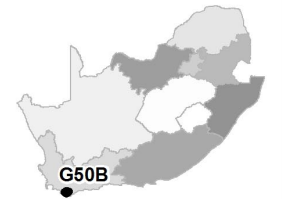


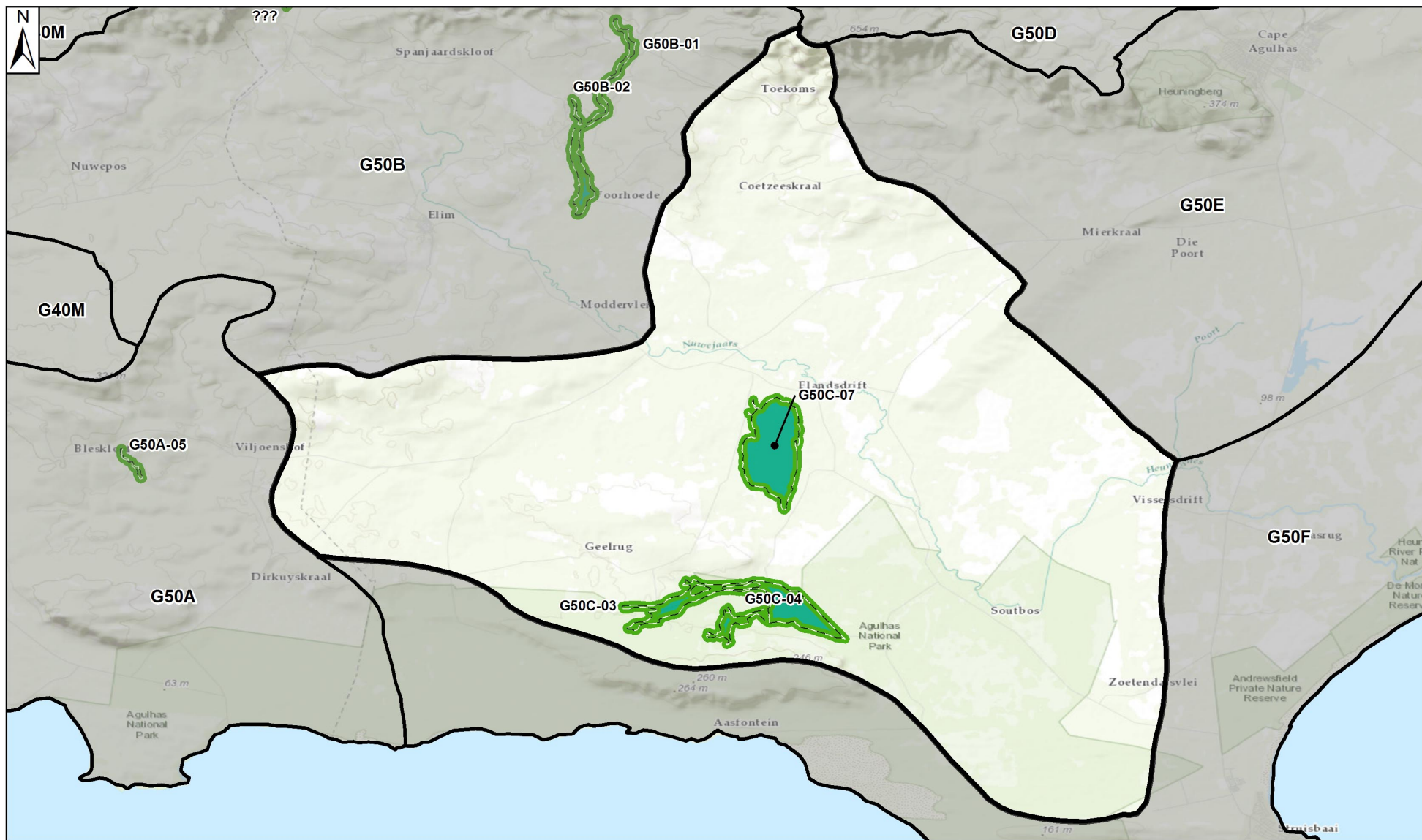
Western Cape - G50B

-  Quaternary Associated with wetland
-  Wetland Boundary





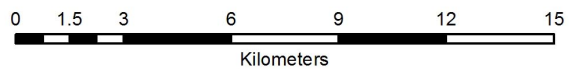
Co ordinate system : Geographic
Datum : WGS84



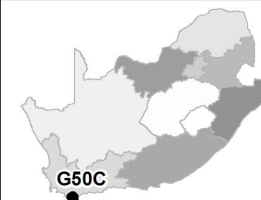


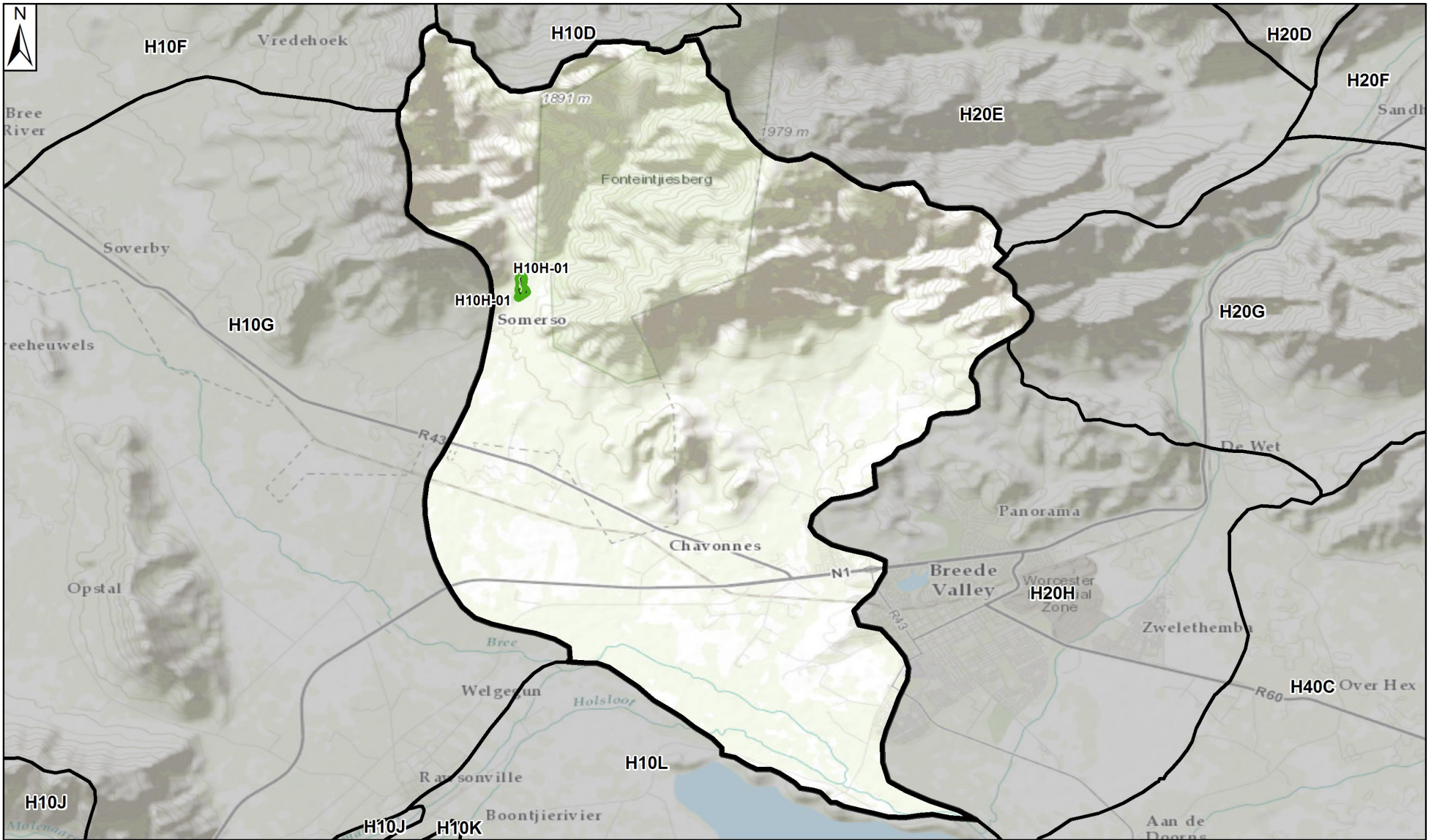
Western Cape - G50C

-  Quaternary Associated with wetland
-  Wetland Boundary





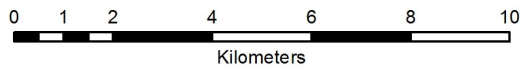
Co ordinate system : Geographic
Datum : WGS84



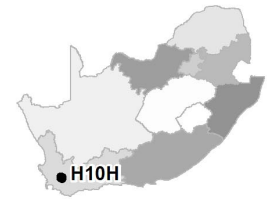


Western Cape - H10H

-  Quaternary Associated with wetland
-  Wetland Boundary





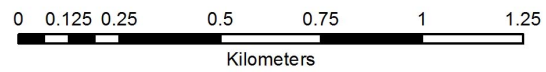
Co ordinate system : Geographic
Datum : WGS84





Western Cape - West Coast - Waterval - G10E-02

-  Quaternary Boundary
-  Wetland Boundary





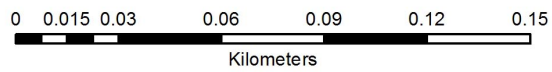
Co ordinate system : Geographic
Datum : WGS84



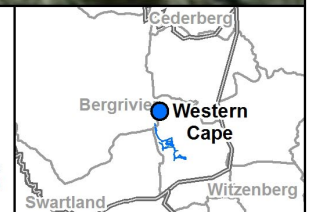


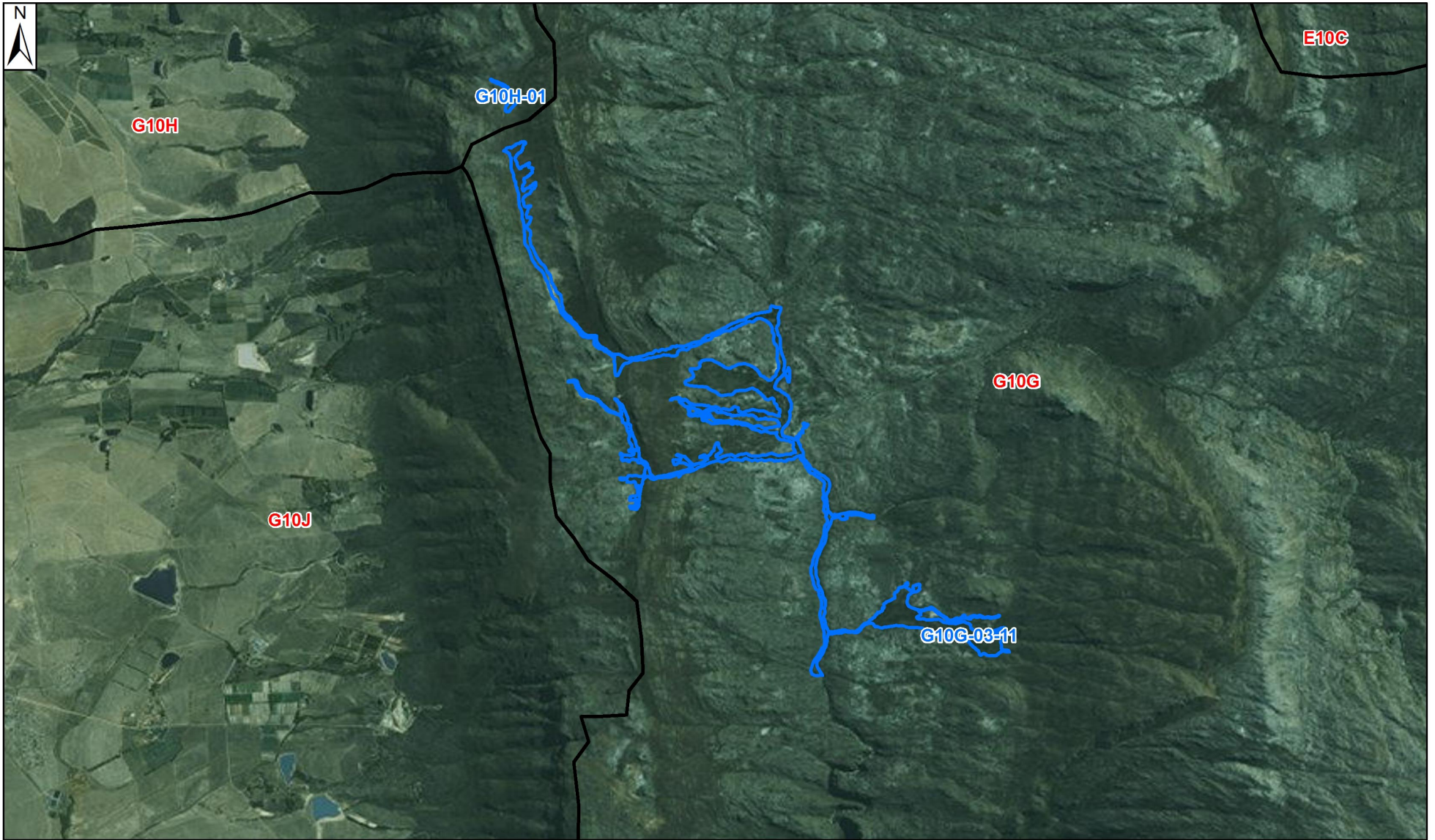
Western Cape - West Coast - Grootwinterhoek Office - G10G-02

-  Quaternary Boundary
-  Wetland Boundary





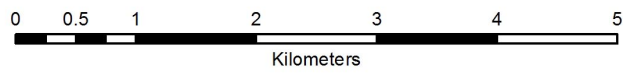
Co ordinate system : Geographic
Datum : WGS84



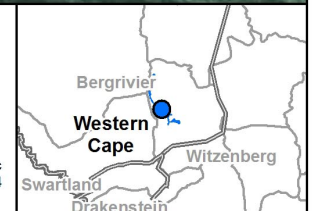


Western Cape - West Coast - De Tronk Sites - G10G-03-11

-  Quaternary Boundary
-  Wetland Boundary





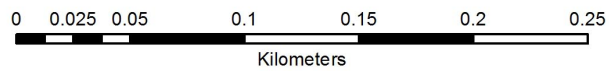
Co ordinate system : Geographic
Datum : WGS84



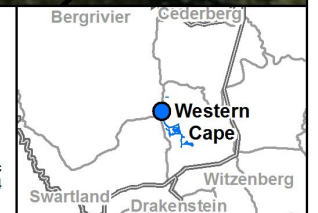


Western Cape - West Coast - De Tronk Site 10 - Jakkalskloof - G10H-01

-  Quaternary Boundary
-  Wetland Boundary





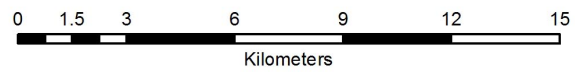
Co ordinate system : Geographic
Datum : WGS84





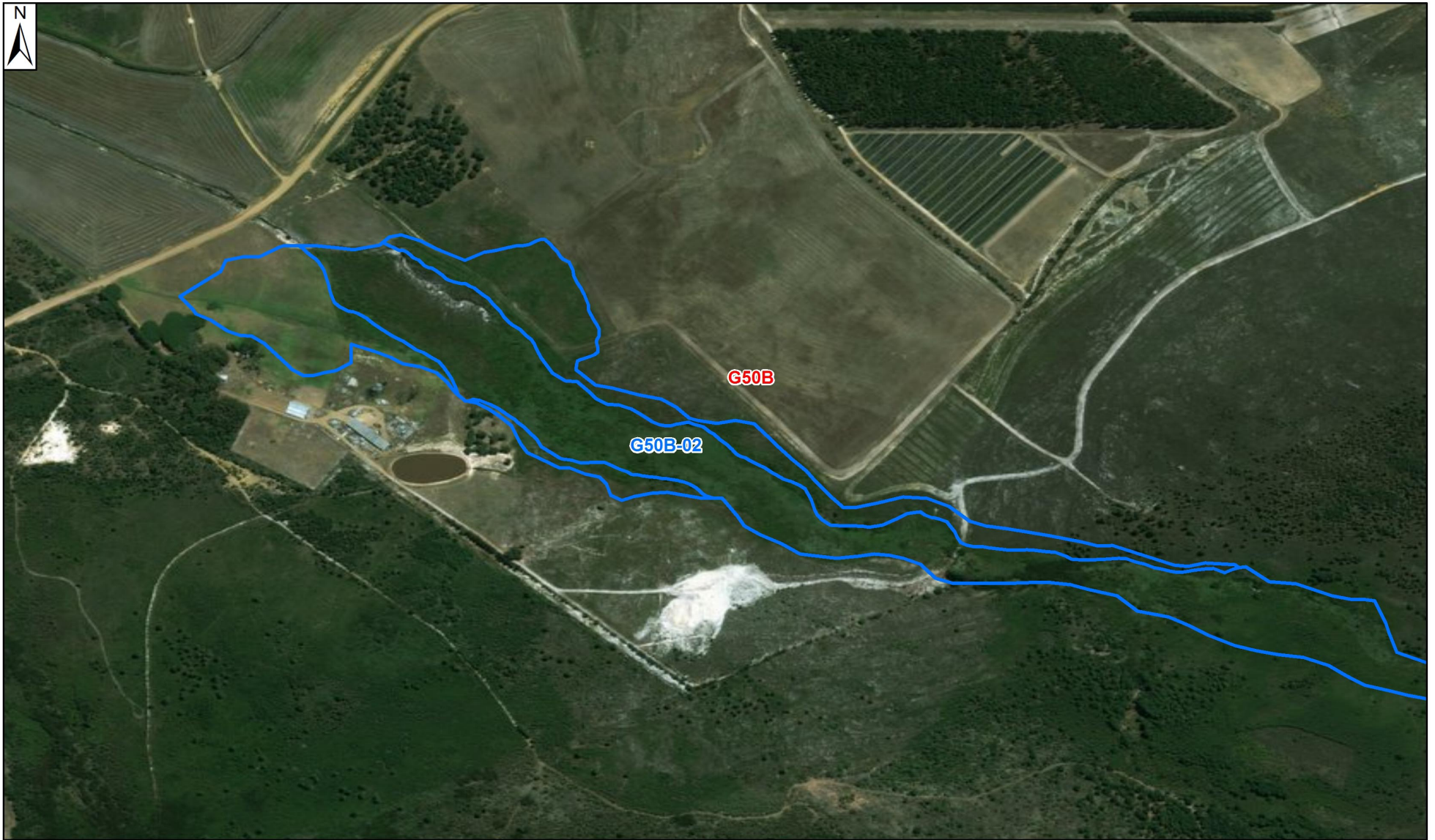
Western Cape - Table Mountain National Park - Orangekloof, Roodeberg, Silvermine - G22

-  Quaternary Boundary
-  Wetland Boundary





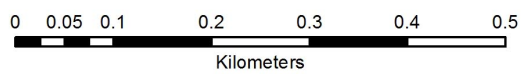
Co ordinate system : Geographic
Datum : WGS84





Western Cape - Agulhas - Breedevelei - G50B-02

-  Quaternary Boundary
-  Wetland Boundary





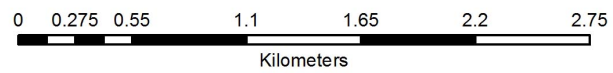
Co ordinate system : Geographic
Datum : WGS84





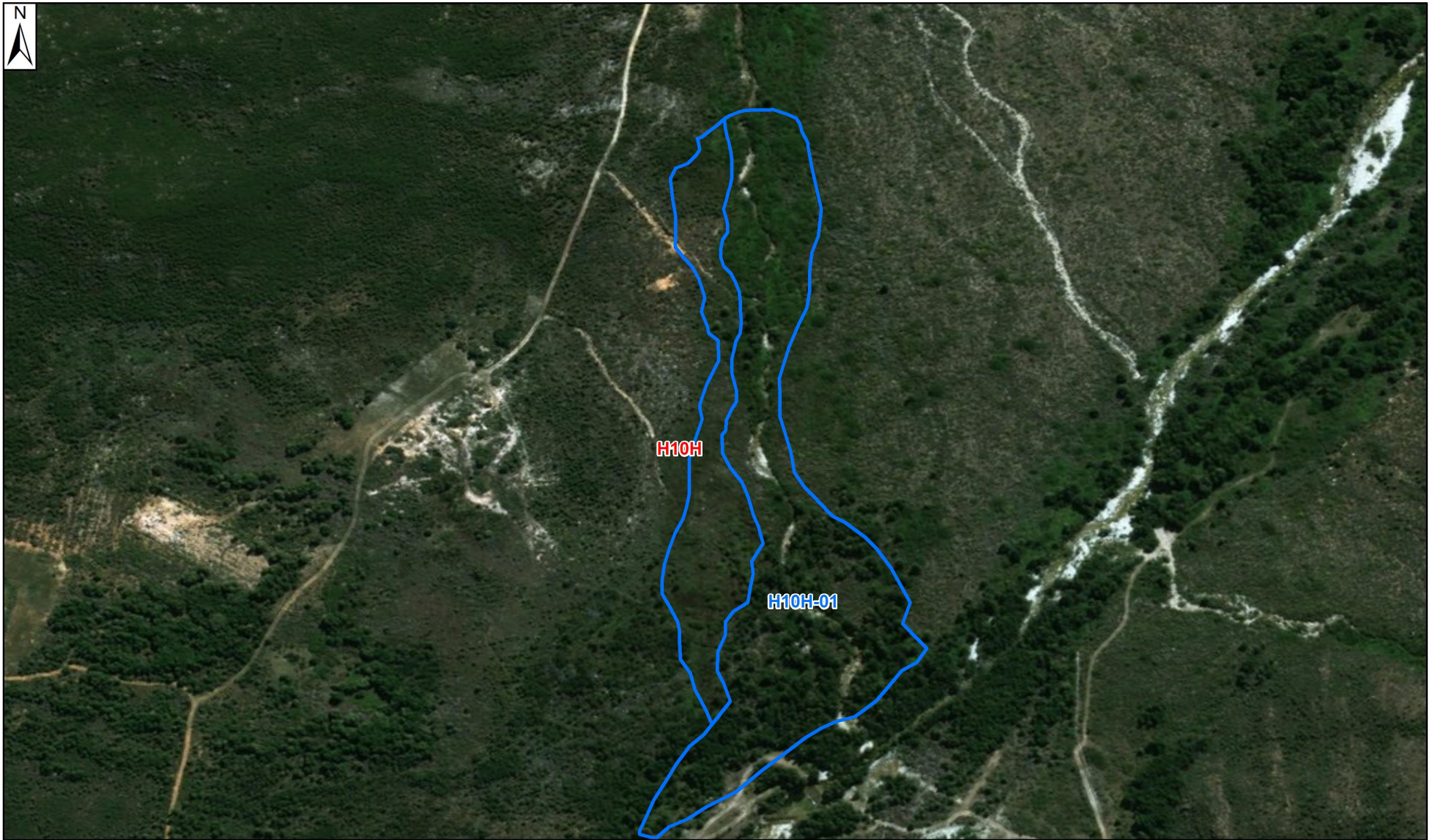
Western Cape - Agulhas - Voelvlei - G50C-07

-  Quaternary Boundary
-  Wetland Boundary





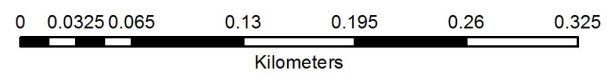
Co ordinate system : Geographic
Datum : WGS84





Western Cape - West Coast - Fonteintjiesberg - H10H-01

-  Quaternary Boundary
-  Wetland Boundary



Co ordinate system : Geographic
Datum : WGS84

