



**PILANESBERG PLATINUM MINES (PTY) LTD  
ITERELENG BAKGATLA MINERAL RESOURCES (PTY) LTD  
RICHTRAU NO. 123 (PTY) LTD**

**REGULATORY AUTHORITIES SCOPING MEETING**

<b>DATE</b>	10h00, 6 March 2012
<b>VENUE:</b>	PPM Boardroom
<b>PROJECT:</b>	Environmental assessments for various mining related projects
<b>SLR COMPANY:</b>	SLR Consulting (Africa)
<b>PROJECT NUMBER:</b>	B001-03 and B007-19
<b>PURPOSE:</b>	The purpose of the scoping meeting was to: <ul style="list-style-type: none"><li>• outline the proposed projects and environmental process;</li><li>• raise and record environmental issues; and</li><li>• agree on the process to be followed and the way forward.</li></ul>
<b>ATTENDANCE:</b>	An attendance register is presented in Appendix 1.

**1. OPEN AND INTRODUCTION**

The meeting was opened by Fiona Bolton of SLR Consulting (Africa) (Pty) Ltd (SLR) (previously known as Metago Environmental Engineers (Pty) Ltd). Fiona Bolton introduced the project team present in meeting: Victoria Tucker (SLR), Dean Riley from Pilanesberg Platinum Mine (Pty) Ltd (PPM), Richard Viring from Richtrau No. 123 (Pty) Ltd (Richtrau), and Jan van der Merwe from Boynton Platinum.

SLR is an independent environmental consulting company appointed by PPM, Itereleng Bakgatla Mineral Resources (Pty) Ltd (IBMR) and Richtrau to undertake an environmental assessment for the proposed projects. A copy of the background information document (BID) was provided to all meeting attendees.

**2. PRESENTATIONS**

Fiona Bolton gave an outline of the proposed projects and the environmental authorisation process being followed as described in the presentation. Thereafter Dean Riley provided more technical details of the proposed projects in a second presentation. Copies of both presentations are attached in Appendix 2.

**3. DISCUSSION**

All the issues that were raised in the meeting have been recorded in Table 1 below. Where a response was provided this has also been included in the table. Given the nature of this meeting, not all questions could be answered during the meeting.

All the issues have been recorded and will be addressed in the environmental impact assessment (EIA) process.

**TABLE 1: RECORD OF ISSUES RAISED AND RESPONSES GIVEN**

Issue raised	By whom	Response (given by the project team unless stated otherwise)
<b>Process Related Issues</b>		
There is no timeline yet that outlines when the three operations will become one?	Charles Nmutandani	The possibility of the consolidated operation is under discussion and it is not expected in the immediate future but perhaps in a few years' time.
Is it not better to consolidate PPM into the larger operation now?	Charles Nmutandani	
Was the Department of Land Affairs informed of this meeting and the proposed project?	Bafedile Moselane	The Department of Land Affairs (now called the Department of Rural Development and Land Reform [DRDLR]) has been notified of the proposed projects and was invited to attend this meeting.
At the municipality we are aware that there is an issue with regards to the community of Lesetlheng and the BBKTA.	Bafedile Moselane	SLR has engaged with the Lesetlheng community as part of the consultation phase. The community indicated that there are existing issues with the BBKTA.
The municipality must check with Land Affairs with regards to the deed searches and land claims (of the Lesetlheng community).	Mpho Molongoana	Agreed, it would be best for the municipality to contact the DRDLR directly.
Is the 40 day review period legislated?	Bafedile Moselane	Yes, NEMA states that there is a 40 day period for regulatory authorities to review the report.
Is the Tuschenkomst water supply part of these proposed projects?	Charles Nmutandani	No, the water supply project does not form part of the projects under discussion today.
Will we receive the minutes of this meeting?	Mpho Molongoana	Minutes of the meetings will be included as an appendix in the Scoping Report.
<b>Technical Related Issues</b>		
What is the lifespan of Sedibelo and Magazynskraal?	Bafedile Moselane	20 – 25 years. In reality if the consolidated operation is approved it would be in place for at least 50 years.
Will the area to the north of Wilgespruit (on Cyferkuil) be mined?	Mpho Molongoana	The mining rights on these properties are held by third parties. We are not aware of the plans for mining on these properties
Will the Koefoesfontien/Kruidfontein reef be mined?		
Why is one area mined opencast and the other area mined underground?	Sandra Mafisa	If the reef is near the surface then it is easier to mine using the opencast method. The eastern portion of Sedibelo and the Magazynskraal site is purely underground mining due to the fact that the reef is located 150m below the ground.
Will the Wilgespruit pit be rehabilitated?	Charles Nmutandani	Yes, the pit will be backfilled once mining is complete.
<b>Surface Water Related Issues</b>		
There are two dams that were mentioned in the presentation, is the mine intending to rebuild them?	Sandra Mafisa	The two dams were destroyed years ago. The mine is not planning on rebuilding them. The plan is to flood the Tuschenkomst pit and offer the water as a resource to the communities. There is a possibility that the Tuschenkomst water body will contain the same volume of water as the Vaalkop Dam.
With regards to the water quality of the flooded pit, will the mine have a maintenance plan in place for several years?	Mpho Molongoana	If the pit flooding project is approved, the mine will establish a trust that will be responsible for the water quality monitoring and distribution of water from the pit. There is also a treatment plant on the mine where water can be treated. The trust, which will include the Moses Kotane Municipality and the communities, will decide

<b>Issue raised</b>	<b>By whom</b>	<b>Response (given by the project team unless stated otherwise)</b>
		how the water is used.
What capacity of water will the pit hold?	Mpho Molongoana	Between 50 and 60MI in total. There will be 1.70 megalitres of water per day available to be used by the community. A portion of rainwater can also be captured.
Will the stormwater management measures channel water into the pit?		Yes, water will be used more effectively.
<b>Traffic and Road Related Issues</b>		
With regards to the proposed road diversion, will the new road be tarred? What are the details of the proposed plans? Whichever diversion is used, it would be better if the new road is tarred.	Mpho Molongoana	The road will be built to the Department of Roads' standard, and will not be tarred as part of this project.
The diversion of the road should be checked with the North West provincial Road's Department and possibly used as part of the mine's Social and Labour Plan.	Bafedile Moselane	The North West Roads Department has been notified of the proposed road diversion and will be involved throughout the EIA. This will not form part of the mine's SLP as an alternative transport route must be provided to the public if the P50-1 is closed.
<b>Air Quality Related Issues</b>		
Are there air quality stations in and around the mine? Where are they located and what do they monitor?	Mpho Molongoana	There are dust buckets at the mine and in the surrounding areas that measure dust fallout. There is also an internal weather station at the mine.
What is the expected air quality impact of the mines on the surrounding community? I would assume that a 50km radius is studied, but sometimes the effects fall further than specified. How does the mine plan to address this?		The air quality specialists that have been commissioned for the proposed projects will model the potential impacts that could arise as a result of the projects. The study is not limited by a specific area. The specialist study will include management measures to mitigate the potential impacts.
On some occasions, the terms of reference can be limited and therefore some areas are excluded. It is important to gain a true reflection of the impacts.		The scoping report will include the scope of the specialist studies. Airshed Planning Professionals will develop a model and will also suggest mitigation measures to limit the potential impacts.
Does each property in the proposed project have air monitoring stations?	Sandra Mafisa	PPM and IBMR have dust buckets on site, however Magazynskraal does not yet have dust buckets as it is currently a prospecting operation. Should the mining right be granted, dust buckets will be established on Magazynskraal.
Does Bojanala Municipality receive air quality reports from the mine?		Not currently, however if the municipality requests the reports PPM would make them available.
<b>Waste Management Related Issues</b>		
Is there currently a waste facility present on Magazynskraal/Sedibelo?	Sandra Mafisa	No waste facilities have been established at Sedibelo or Magazynskraal.
Specifically with regards to waste permits, what are the mines proposed plans for when the three operations become one?	Charles Nmutandani	Each mining right will have its own permits and will comply with the permits' requirements. There is a possibility that the mines will consider transferring these to one permit (in the future).
We are concerned that the waste disposal might not fall under one mining rights' responsibility.	Mpho Molongoana	At the moment the three projects are separate and therefore each mine must deal with the waste individually. If the operations are consolidated in the future the mines would need to come to an agreement as to who would be responsible for the waste.

Issue raised	By whom	Response (given by the project team unless stated otherwise)
<b>Soil and Land Capability Related Issues</b>		
With regards to soil and land capability, if the mine removes the soil, what will happen to the community's livelihood?	Mpho Molongoana	The mines are in discussions with the BBKTA to relocate the communities living in the project areas. As a minimum, the communities will be provided with land that allows for the same standard of living as they currently have. The BBKTA are identifying the people that will be impacted by the projects.
<b>Biodiversity Related Issues</b>		
The area contains sensitive biodiversity, how is the mine taking this into account?	Mpho Molongoana	The projects are being planned to minimise the impacts on biodiversity to as much as possible, particularly in the context of the proposed Heritage Park.

#### 4. THE WAY FORWARD

- Fiona Bolton explained that all the raised issues have been captured and those that need to be addressed by PPM, IBMR and Richtrau will be forwarded to PPM, IBMR and Richtrau for their response in the EIA process;
- Copies of the scoping and EIA/EMP reports and both English and Setswana summaries will be made available for public review and comments;
- Moses Kotane Local Municipality (care of Johnson Maoka) will receive one hardcopy and three electronic (on a CD) copies;
- All the registered IAPs who have provided SLR with their postal addresses and/or e-mail addresses will receive copies of the summaries which will inform them where full scoping and EIA/EMP reports can be reviewed; and
- All the registered IAPs who have provided SLR with their postal addresses and/or e-mail addresses will receive notification of the record of decision.

#### 5. CLOSE

The meeting was closed by Fiona Bolton.

## APPENDIX 1: ATTENDANCE REGISTER

Name and Surname	Interest in project/ Village	Postal address	Contact numbers	E-mail
Sandra Mafisa	Moses Kotane Local Municipality – Environment and Waste Unit	Private Bag X1011 Mogwase 0314	014 555 1406 082 562 5996	<a href="mailto:sandram@moseskotane.gov.za">sandram@moseskotane.gov.za</a>
Mpho Molongoana	Moses Kotane Local Municipality – Town Planner		014 555 1315 082 070 7898	<a href="mailto:mphom@moseskotane.gov.za">mphom@moseskotane.gov.za</a>
Bafedile Moselane	Moses Kotane Local Municipality – IDP manager		014 555 1407 082 467 6740	<a href="mailto:moselaneb@moseskotane.gov.za">moselaneb@moseskotane.gov.za</a>
Charles Nmutandani	Department of Water Affairs	Private Bag X357 Hartebeespoort 0216	012 253 1026 082 896 8222	<a href="mailto:nmutandani@dwa.gov.za">nmutandani@dwa.gov.za</a>
Dean Riley	PPM	Private Bag X11 Highveld 0001	082 802 2981	<a href="mailto:driley@platmin.com">driley@platmin.com</a>
Jan van der Merwe	Boynton		082 328 0153	<a href="mailto:jvandermerwe@platmin.com">jvandermerwe@platmin.com</a>
Richard Viring	Richtrau 123		072 576 2494	<a href="mailto:richard.viring@pallinghurst.com">richard.viring@pallinghurst.com</a>
Fiona Bolton	SLR (Africa)	P O Box 1596 Cramerview 2060	011 467 0945	<a href="mailto:fbolton@slrconsulting.com">fbolton@slrconsulting.com</a>
Victoria Tucker				<a href="mailto:vtucker@slrconsulting.com">vtucker@slrconsulting.com</a>

## APPENDIX 2: PRESENTATIONS



global environmental solutions

## Environmental assessments for various mining related projects


### Authorities Meeting – Scoping Phase

Pilanesberg Platinum Mines (Pty) Ltd  
 Itereleng Bakgatla Mineral Resources (Pty) Ltd  
 Richtrau No. 123 (Pty) Ltd

6 March 2012

### AGENDA

- Registration
- Welcome and opening
- Overview of proposed projects
- Environmental authorizations required
- Status of existing environment
- Potential impacts
- Way forward


global environmental solutions 

### OVERVIEW OF PROJECTS

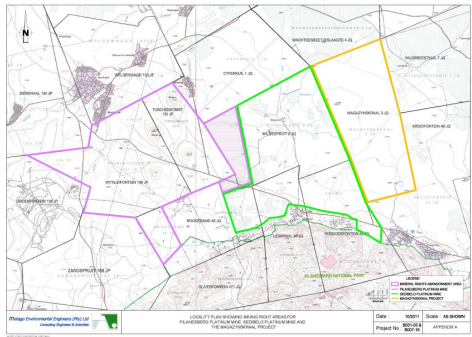
The relevant mining / prospecting rights are held by the following parties:


- Pilanesberg Platinum Mines (Pty) Ltd (PPM) owns and operates the Pilanesberg Platinum Mine, currently located on the farms Tuschenkomst 135 JP and Witkleifontein 136 JP. PPM holds the mining right for PGMs and related minerals on Tuschenkomst 135 JP, Witkleifontein 136 JP, Rooderand 46 JQ (portion 3) and Ruighoek 168 JP.
- Itereleng Bakgatla Mineral Resources (Pty) Ltd (IBMR) owns and is currently establishing the Sedibelo Platinum Mine on the farm Wilgespruit 2 JQ. The IBMR holds the mining right for PGMs and associated metals on Wilgespruit 2 JQ, Rooderand 46 JQ (portion 1), Legkraal 45 JQ and Koedoesfontein 42 JQ.
- Richtrau No. 123 (Pty) Ltd (Richtrau) is planning to establish an underground platinum mining operation and related surface infrastructure on the farm Magazynskraal 3 JQ. Richtrau holds the prospecting right for PGMs and related minerals on Magazynskraal 3 JQ.

Due to the nature and location of the ore body, it is proposed that these three operations function as one mining operation.

global environmental solutions 

### OVERVIEW OF PROJECTS



global environmental solutions 


### OVERVIEW – PILANESBERG PLATINUM MINE

PPM is an existing opencast mining operation. As part of an agreement with the IBMR, PPM proposes to extend the existing pit on Tuschenkomst 135 JP onto Wilgespruit 2 JQ and Rooderand 46 JQ (portion 1). The following surface infrastructure is proposed:

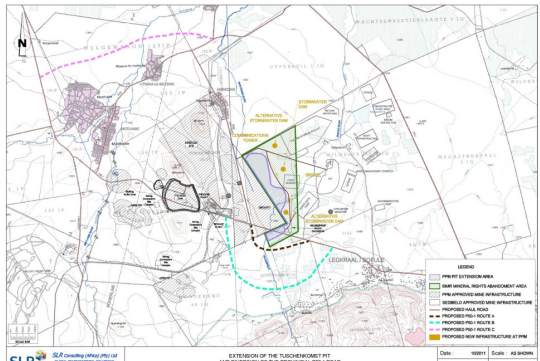
- Increased footprint of the open pit
- Stormwater management measures
- Bridge over the Wilgespruit
- Telecommunications mast
- Change to the footprint of the existing waste rock dumps


In addition, it is proposed that:

- The P50-1 road be diverted or closed to avoid the proposed mining operations.
- Dried sewage sludge be used as a fertiliser for the walls of the existing tailings storage facility.

global environmental solutions 

### OVERVIEW – PILANESBERG PLATINUM MINE



global environmental solutions 

### OVERVIEW – SEDIBELO PLATINUM MINE

The Sedibelo Platinum Mine is in the process of being developed and will include both opencast and underground mining. Due to the potential combined mining operation, it is proposed that surface infrastructure be repositioned / redesigned and new surface infrastructure established to better suit the combined operation. The proposed changes include:

Additional infrastructure:

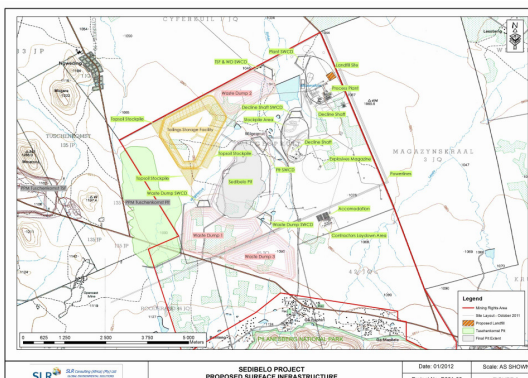
- shaft complex (possibility), waste rock dumps, ventilation shafts, stormwater management infrastructure and a helipad.

Repositioned / redesigned infrastructure:

- concentrator plant, shaft complex, increased footprint of the open pit, tailings storage facility and waste rock dump

In addition, various options for a waste facility are being investigated. It is proposed that a landfill site be established at the mine.

### OVERVIEW – SEDIBELO PLATINUM MINE



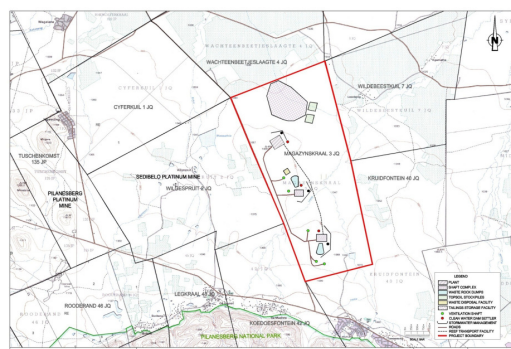
SEDIBELO PROJECT  
PROPOSED SURFACE INFRASTRUCTURE  
Date: 01/02/12 Scale: AS SHOWN  
Project No: 8001-03 FIGURE 2

### OVERVIEW – MAGAZYNSKRAAL MINE

Richtrau No. 123 (Pty) Ltd is proposing to establish an underground mining operation, with related surface infrastructure. At this stage it is proposed that the ore body will be accessed from the Sedibelo underground workings. Proposed surface infrastructure includes:

- Two shaft complexes
- Ventilation shafts
- Waste rock dumps
- Topsoil stockpiles
- Mineral processing plant
- Tailings storage facility
- Waste facility (possibly landfill site)
- A wide range of support infrastructure, including: roads, reef transport facility, stormwater management measures, power and water supply infrastructure etc.

### OVERVIEW – MAGAZYNSKRAAL MINE



MAGAZYNSKRAAL PROJECT  
PROPOSED INFRASTRUCTURE LAYOUT  
Date: 10/01/11 Scale: AS SHOWN  
Project No: 8001-03 FIGURE 1  
NOTE FOR CONCEPTUAL USE ONLY

### ENVIRONMENTAL PROCESS

Primary environmental authorisations required:

- EMP in terms of the MPRDA (DMR)
- EIA and EMP in terms of the NEMA and NEMWA (DEDECT and DEA)
- Water use authorisation in terms of the NWA (DWA)

### ENVIRONMENTAL PROCESS

Progress to date:

IAP consultation

- Relevant authorities and stakeholder groups have been notified of the proposed projects
- Public and focussed meetings are taking place (5 – 13 March 2012)

Scoping Report

- Sets out all issues that have to be investigated further
- Sets out how these investigations will be performed
- "Agreed approach" between the authorities, the public and the project team



**STATUS OF EXISTING ENVIRONMENT**

**Climate:** The project sites fall within the Highveld Climatic Zone. Temperatures are generally mild and rainfall is limited to the summer months.

**Land use:** The current land use on the proposed project areas includes mining, cattle grazing, subsistence agriculture.

**Geology:** The project sites are located in the Western Limb of Bushveld Igneous Complex.

**Topography:** Relatively flat landscape on the project sites. Average elevation is 1060 metres above mean seal level (mamsl) on site. Surrounding landscape is punctuated by isolated koppies. Hills associated with the Pilanesberg National Park are located to the south of the proposed project areas.

**Soils and land capability:** Soils are dominated by "black-turf" with grazing and limited arable potential.

**Animal life:** A wide variety of animal species occur on the project sites, including Red Data species. Sites have been disturbed by community activities such as grazing.

global environmental solutions



**STATUS OF EXISTING ENVIRONMENT – cont.**

**Plant life:** Project areas are located in the Dwaalboom Thornveld vegetation type. Protected and medicinal species are known to occur within the project areas. Sites have been disturbed by community activities such as grazing.

**Surface water:** Non-perennial streams including: the Wilgespruit, Bofule River and Lesele River in the Crocodile River catchment. Dams including the Moswafole and unnamed dam on Magazynskraal 3 JQ. Surface water quality in the area generally reflects elevated concentrations of fluoride, manganese, aluminium and iron. Stream flow is irregular and only occurs after heavy rains, therefore reliance is limited.

**Groundwater:** The average water level in the project area is 22 m below ground level (mbgl) and ranges from 11 – 50 mbgl. Water quality is generally good in the project area, with elevated levels of fluoride and magnesium. Heavy reliance on groundwater in the area.

**Air quality:** Mines and industries in the area emit pollutants. Other existing pollution sources: biomass burning, fossil fuel burning, farming, dust generated on unpaved roads.

global environmental solutions



**STATUS OF EXISTING ENVIRONMENT – cont.**

**Noise:** Ambient noise level has been altered by existing mining operations, however noise levels are generally low in surrounding areas.

**Visual:** Landscape character has been altered by existing mining operations in the area, however the general area is rural and relatively undeveloped.

**Heritage and cultural resources:** Numerous centuries-old remains of ancient Tswana spheres of influence in general area, often found at the base of hills and koppies. A historical colonial house of heritage importance was identified on Wilgespruit 2 JQ during the 2007 Sedibelo EIA. Limited remains found in the southern section of Magazynskraal 3 JQ.

*Are there any sites of cultural importance that we should know about?*

**Socio-economic:** Communities within a 6 km radius of the proposed projects include: Ga Masilela, Lekutung, Lesethheng, Magalane, Ngweding, Ntswana-le-Metsing, Motlhabe, Legkraal/Bofule. Other parties within a 6 km radius of the proposed projects include the Pilanesberg National Park and Black Rhino Game Reserve.

global environmental solutions



**POTENTIAL IMPACTS AND PROPOSED INVESTIGATIONS**

Potential impact	Proposed investigations
Soil	Earth Science Solutions
Biodiversity	Natural Scientific Services
Surface water and Hydrology	SLR
Groundwater	AGES
Air quality	Airshed Planning Professionals
Noise	Acusolv
Blasting	SLR
Visual	Newtown landscape Architects
Heritage resources	Dr Julius Pistorius
Paleontological resources	Prof Bruce Rubidge
Traffic	Siyazi
Land use	SLR
Socio-economic	MTS / Strategy4Good
Closure liability	SLR

**WAY FORWARD**

- Scoping Report will be available for review – end of March 2012
- Review period for authorities and IAPs: 40 days (excluding Easter holidays)
- Submission of final report to DEDECT and DEA – early May 2012
- Conduct specialist investigations and complete EIA
- Stakeholder engagement meetings in EIA Phase and opportunity to review EIA and EMP report

global environmental solutions



**CLOSE**

Thank you for your time!

global environmental solutions



**EMP's to support a consolidated mining operation**  
**The "African Queen" project**

**RICHTRAU No.123 (PTY) Ltd**

29<sup>th</sup> February 2012

**Agenda**

- Welcome
- Project Introduction
- Background to the "African Queen Project"
- Current ownership overview of the African Queen assets.
- Overview of the African Queen Properties
- Structure of the African Queen project orebody
- Infrastructure to support the African Queen project
- Infrastructure requirement overview
- Legal Compliance
- Discussion and Closure

2

**Introduction**

The African Queen project is the vision of the Bakgatla-Ba-Kgafela Tribe and Pallinghurst and is a consolidated venture, consisting of :-

- Platmin Limited ("Platmin") - Pilanesberg Platinum Mines
- Itereleng Bakgatla Minerals Resources (Pty) Ltd ("IBMR") - Sedibelo Project
- Richtrau No. 123 (Pty) Ltd ("Richtrau") Magazynskraal / Sedibelo East Project

3

**Introduction**

It is the vision of all the partners of the "African Queen Project" to conduct mining operations in an economically and environmentally sustainable manner so that the shareholders and the surrounding community benefit from the mining operations. It is also anticipated that the input from the owners and I&AP's will result in the operations been designed and operated in a manner that all stakeholders will be proud of.

4

**Background to the "African Queen" project.**

The Bakgatla, Platmin Limited ("Platmin"), the Pallinghurst consortium of investors ("Pallinghurst Group") and Anglo Platinum have entered into a suite of agreements with respect to the PGM properties north of the Pilanesberg, including:-

- Platmin acquiring the western portion of the Sedibelo Mining Right ("Sedibelo West") from the IBMR for US\$75 million ("Sedibelo West Transaction")
- Pallinghurst Group acquiring 49.9% of the shares in IBMR from the Bakgatla for US\$99.8 million ("Sedibelo Transaction")
- Richtrau and IBMR compiling a combined feasibility study which incorporates a single proposed mining operation across their two properties of Magazynskraal and Wilgespruit (Sedibelo East)

5

**Current ownership overview of the African Queen assets**

6

### Overview of the African Queen properties

**The African Queen Area is separated into three distinct orebodies Separated by north-south faulting**

**LEGEND**  
 Potential mineable areas  
 Fault lines separating the orebodies

**Farm boundaries & Mining permits**  
 PPM (Platmin)  
 Sedibelo (ISSM)  
 Magazynskraal (Richtrau)

**Artificial farm boundaries currently dictating mining development**

Note: illustration is an indicative representation of the properties only

7 RICHTRAU No.123

### Structure of the African Queen project orebody

The African Queen Area is separated into three distinct orebodies

- PPM and Sedibelo West
- Sedibelo Central Open Pit and underground
- Magazynskraal – Sedibelo East

The PPM Sedibelo West project is an ore reserve accessible via an open pit situated between two faults with the outcrop on the western side.

The Sedibelo Central open pit and underground ore reserve is a project that is again situated between two faults and will be accessed by an open pit and an underground mining operation.

The Magazynskraal – Sedibelo East project is an ore reserve that will be accessed by an underground mining operation.

Multiple dykes and faults transgress the properties resulting in geologically and structurally complex orebodies.

8 RICHTRAU No.123

### Infrastructure to support the African Queen project

9 RICHTRAU No.123

### Infrastructure requirement overview

#### PPM

In order for PPM to access the orebody in the Sedibelo West area PPM proposes to extend the existing pit on Tuschenkomst 135 JP onto Wilgespruit 2 JQ and Rooderand 46 JQ (portion 1). The following surface infrastructure is proposed:

- Increased footprint of the open pit
- Stormwater management measures
- Bridge over the Wilgespruit
- Telecommunications mast
- Change to the footprint of the existing waste rock dumps

In addition, it is proposed that:

The P50-1 road be diverted or closed to avoid the proposed mining operations.  
 Dried sewage sludge be used as a fertiliser for the walls of the existing tailings storage facility

10 RICHTRAU No.123

### Infrastructure requirement overview

#### Sedibelo Project

The Sedibelo project is in the process of being developed and will include both open pit and underground mining. Due to the potential combined mining operations with the Magazynskraal project, it is proposed that surface infrastructure be repositioned / redesigned and new surface infrastructure established to better suit the combined operation.

The proposed changes include:

Additional infrastructure:

- Shaft complex (possibility)
- waste rock dumps
- ventilation shafts
- stormwater management infrastructure
- sewage treatment plants and a helipad.

11 RICHTRAU No.123

### Infrastructure requirement overview

#### Sedibelo Project

Repositioned / redesigned infrastructure:

- Concentrator plant
- shaft complex
- increased footprint of the open pit, tailings storage facility and waste rock dumps

In addition, various options for a waste facility are being investigated. It is proposed that a landfill site be established at the mine.

12 RICHTRAU No.123

**Infrastructure requirement overview**



**Magazynskraal / Sedibelo East Project**

The combined Sedibelo East/Magazynskraal study has shown that the portal position needs to be moved from where it was positioned in the Barrick Bankable study to optimally access the combined orebody

The proposed future requirements include:

Additional infrastructure:

- shaft complexes
- waste rock dumps
- ventilation shafts
- stormwater management infrastructure
- road network
- tailings storage facility
- concentrator plant.

13   RICHTRAU No.123


**Infrastructure requirement overview**

**Magazynskraal / Sedibelo East Project**

Repositioned / redesigned infrastructure on the Sedibelo project:

- concentrator plant
- shaft complex
- increased footprint of the tailings storage facility.

In addition, various options for a waste facility are being investigated. It is proposed that a landfill site be established at the mine.



14   RICHTRAU No.123

**Legal Compliance**

Currently PPM and the Sedibelo project do not have an approved IWUL (Integrated Water Use Licence) but both projects have IWULA's (Integrated Water Use Licence Application) accepted by the Department of Water Affairs and are current pending.



Both the PPM and the Sedibelo project IWULA will be amended as part of the EMP process to cater for the new projects.

The Magazynskraal / Sedibelo East Project will submit a project IWULA as part of the EMP process.

15   RICHTRAU No.123

**Discussion and Closure**

PPM, IBMR and Richtrou thank you for your participation in this process

16   RICHTRAU No.123