

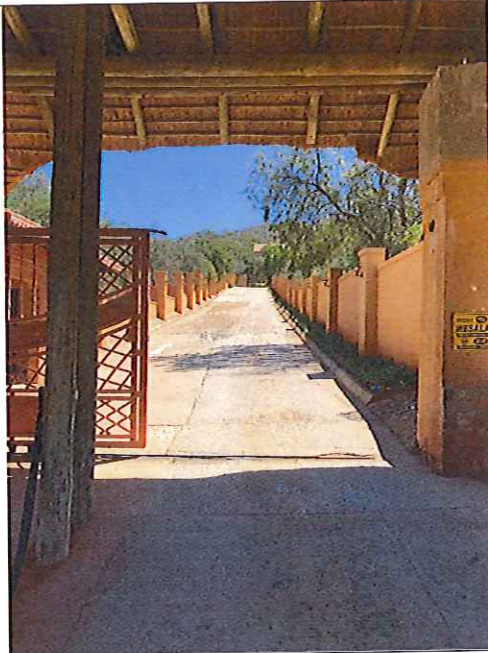
# APPENDIX C

## PHOTOGRAPHS

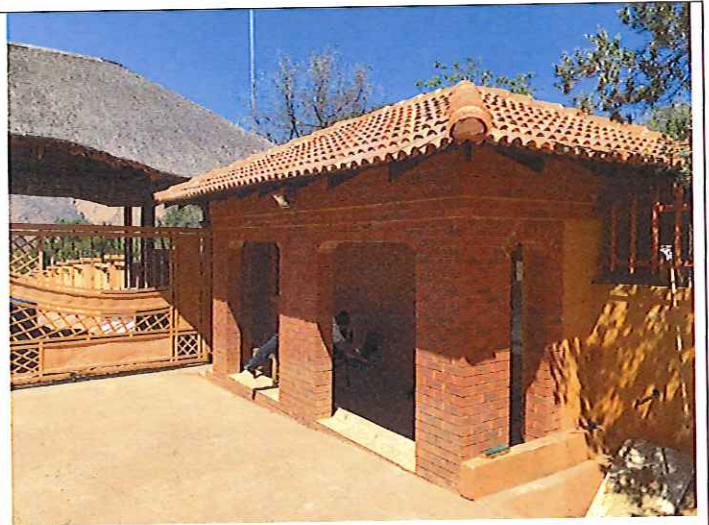
- Existing structures / features on site
  - Entrance (gate, access road, security house)
  - Reception block (driveway, parking, reception area, offices, worker's house & storage)
  - Conference block (parking, offices, bathrooms, kitchen, break-away rooms, large hall.
  - Accommodation blocks
    - Accommodation block 1: 12 on-suite luxury rooms
    - Accommodation block 2: 12 on-suite rooms
    - Accommodation block 3: 20 on-suite rooms
    - Accommodation block 4: 2 family rooms
  - Restaurant block (restaurant, spa, break-away rooms, parking and driveway)
- Expansion areas
  - Expansion area 1: Accommodation block 5; currently used for overflow parking; view of Olifantsnek Dam; west of conference block
  - Expansion area 2: Accommodation block 6; currently used for overflow parking; west of existing accommodation blocks

KGASWANE COUNTRY LODGE

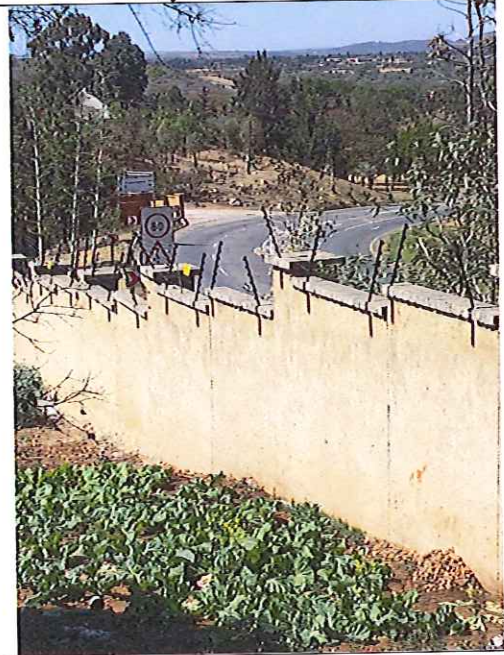
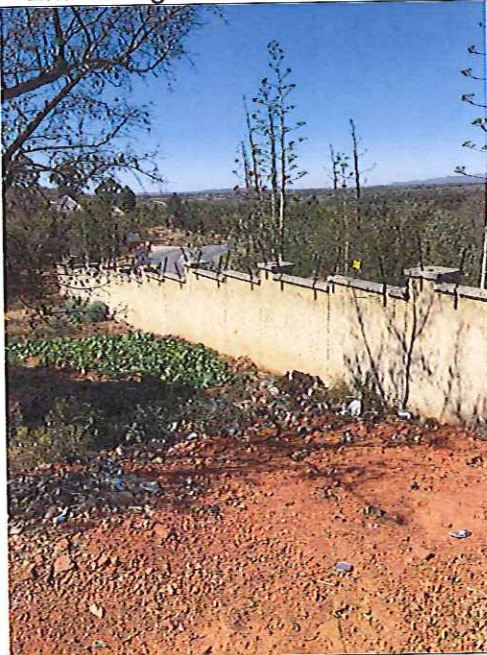
PHOTOGRAPHS TAKEN ON 10 SEPTEMBER 2018



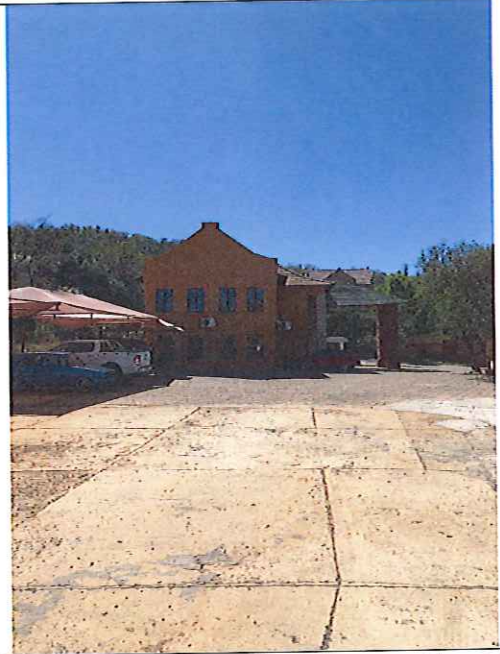
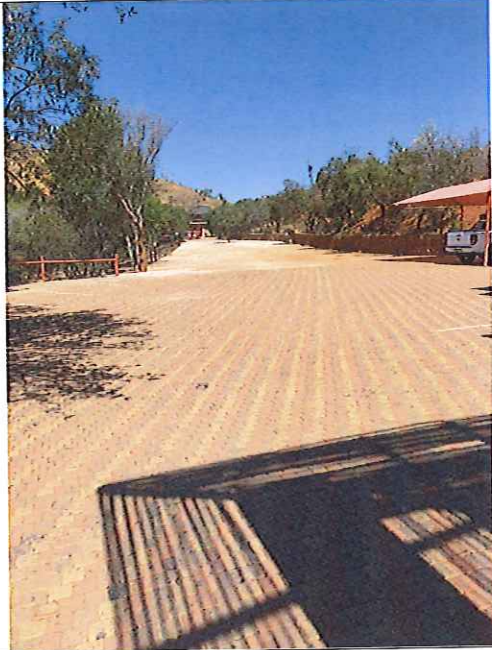
Entrance gate and road from R24



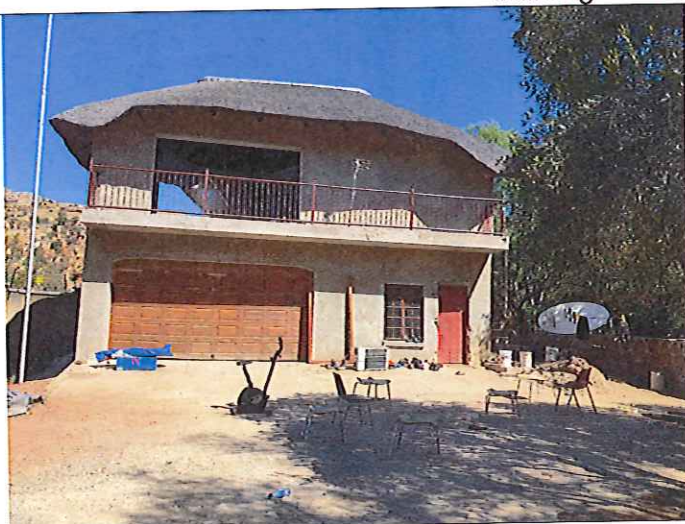
Security house at entrance



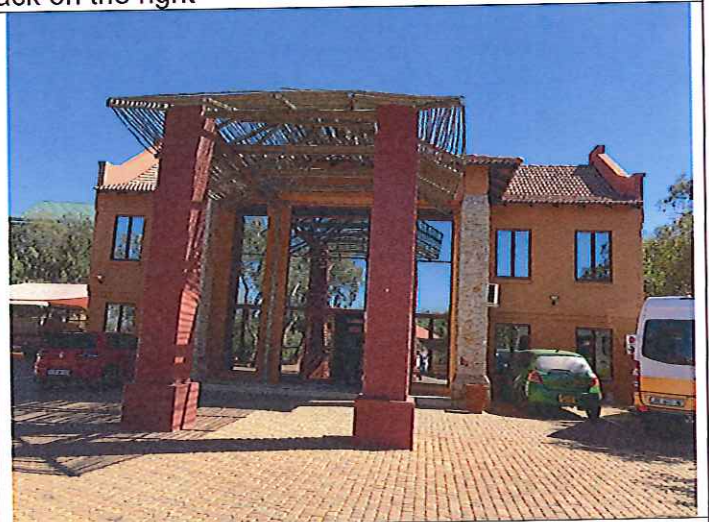
Boundary wall (southern boundary) – R24 towards Rustenburg visible as well as the entrance from the R24 towards Kgaswane Country Lodge



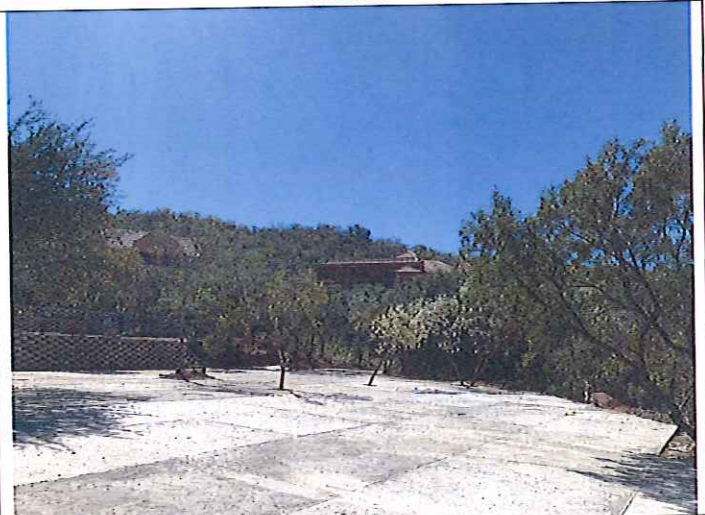
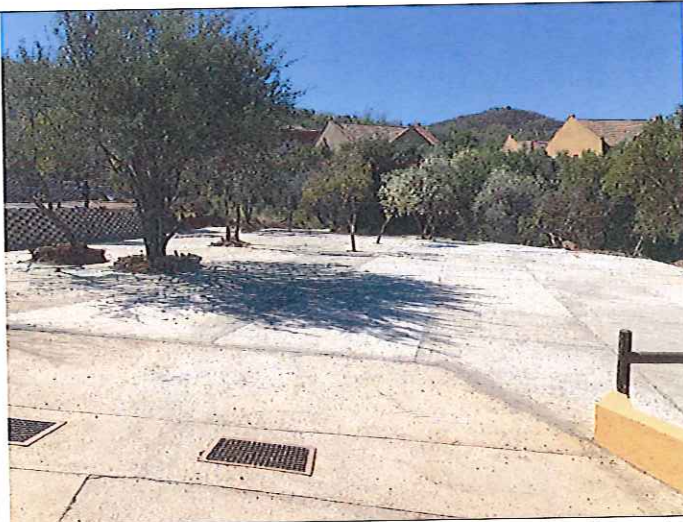
Driveway and parking area at reception block; workers' house at the back on the left; reception block building at the back on the right



Workers' accommodation and storage (south west)



Reception block – includes reception area and offices



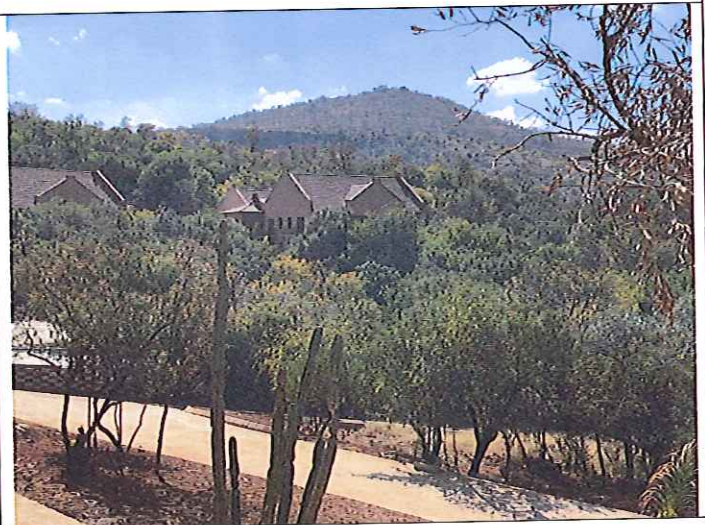
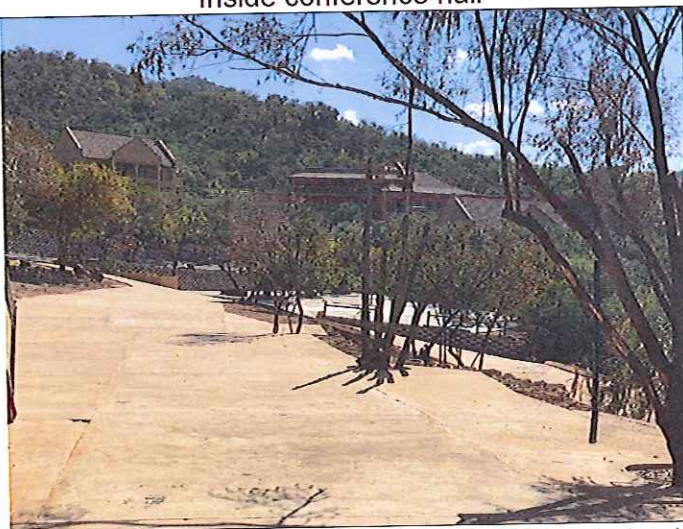
Parking area adjacent to (east) conference block



Conference block – includes offices, bathrooms, kitchen, large conference hall (can be divided into smaller sections) and break-away rooms



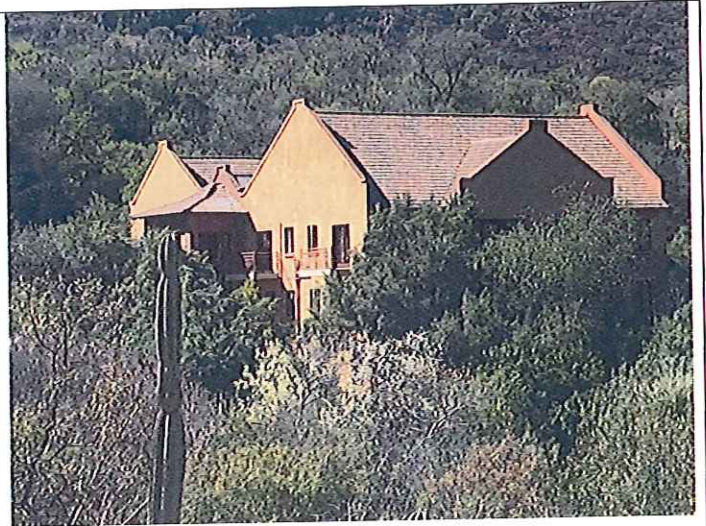
Inside conference hall



View of accommodation blocks from conference block



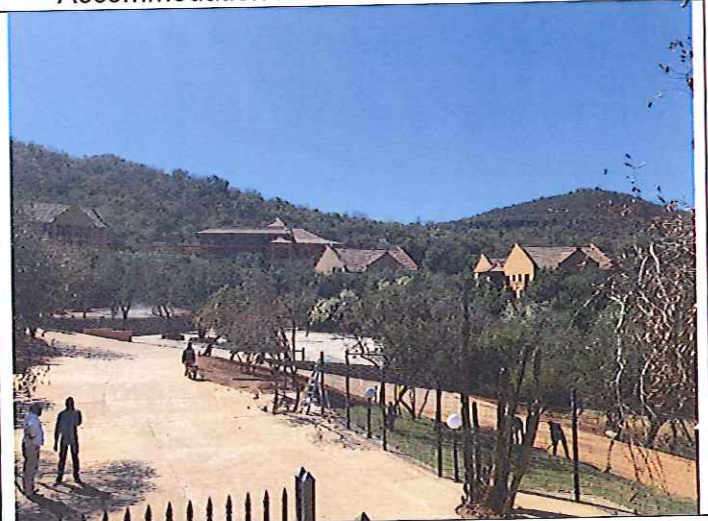
Accommodation block 1 – 12 en-suite luxury rooms



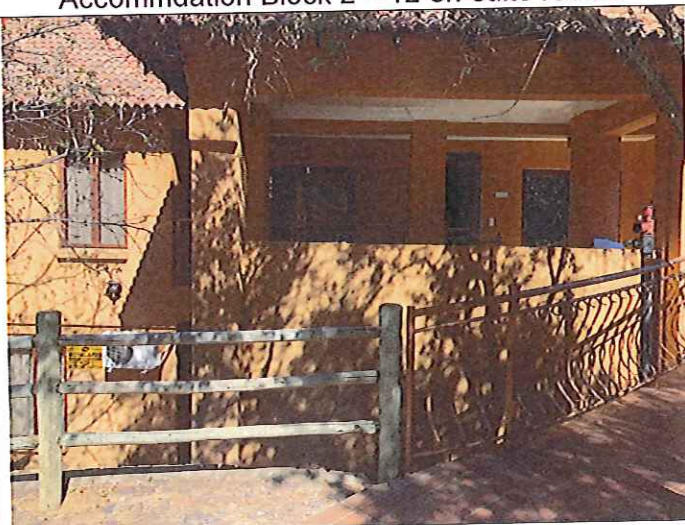
Accommodation Block 3 – 20 en-suite rooms



Restaurant building at back (including restaurant, spa, small restaurant or break-away rooms) and Accommodation Block 2 – 12 en-suite rooms



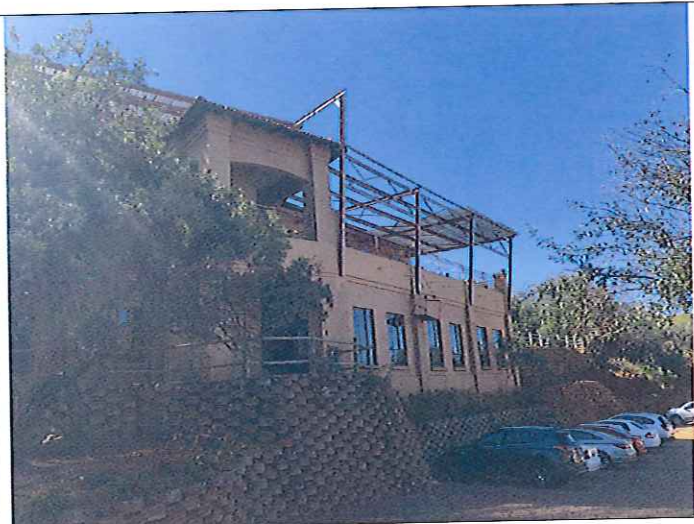
Accommodation block 1 left; Restaurant and Accommodation block 2 middle; Accommodation block 3 right



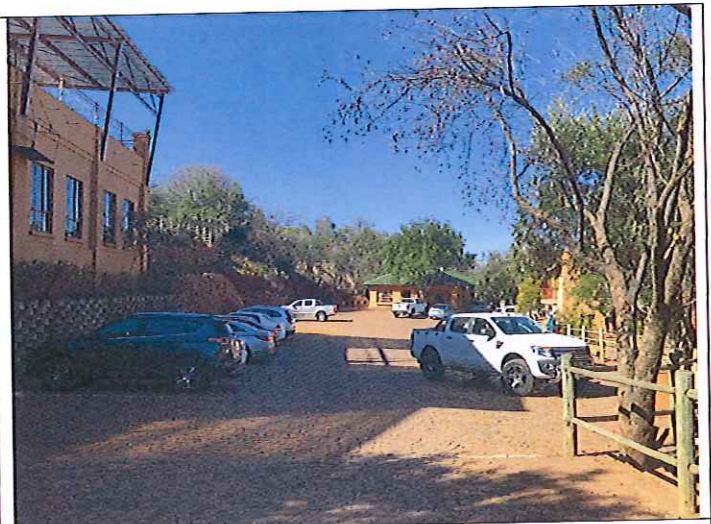
Accommodation block 2 back – entrance of rooms from restaurant's side



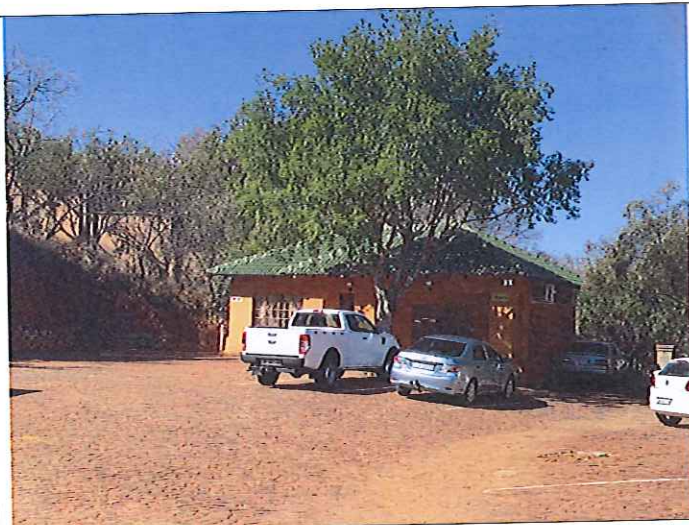
Accommodation block 3 back - entrance of rooms from restaurant's side



Restaurant block with parking



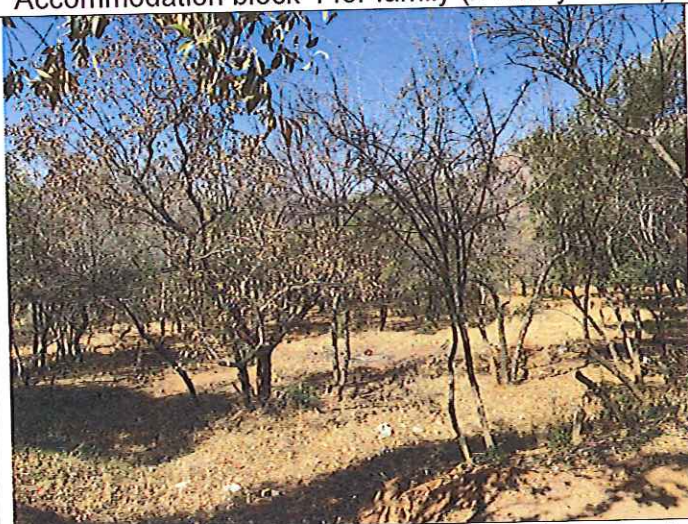
Restaurant block parking and driveway;  
Accommodation block 4 for family



Accommodation block 4 for family (2 family rooms)

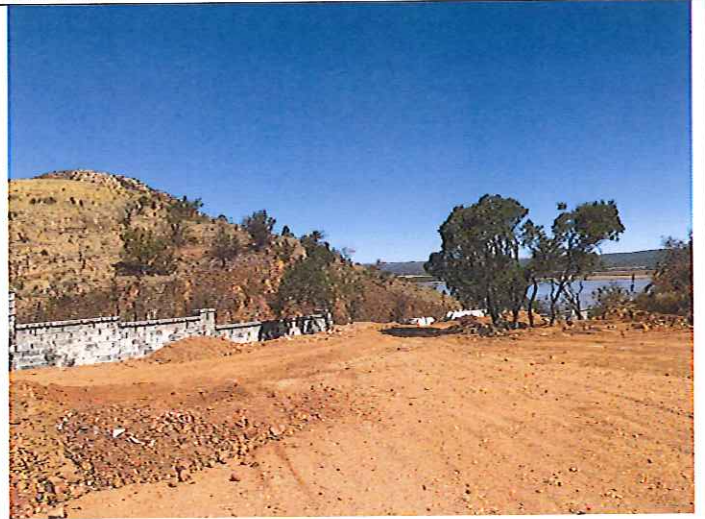
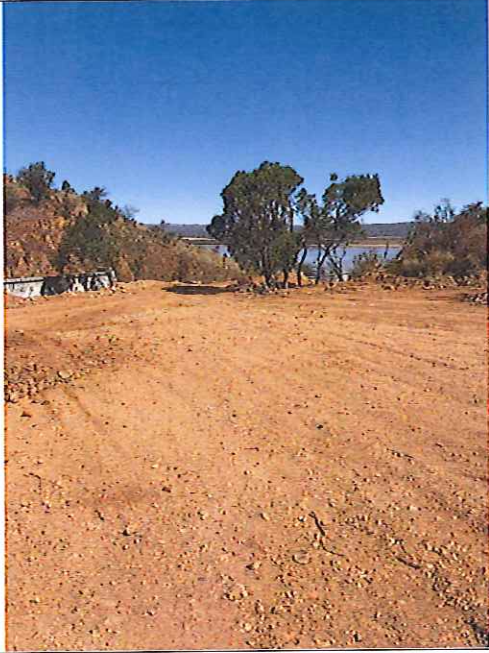


Example of inside of a room

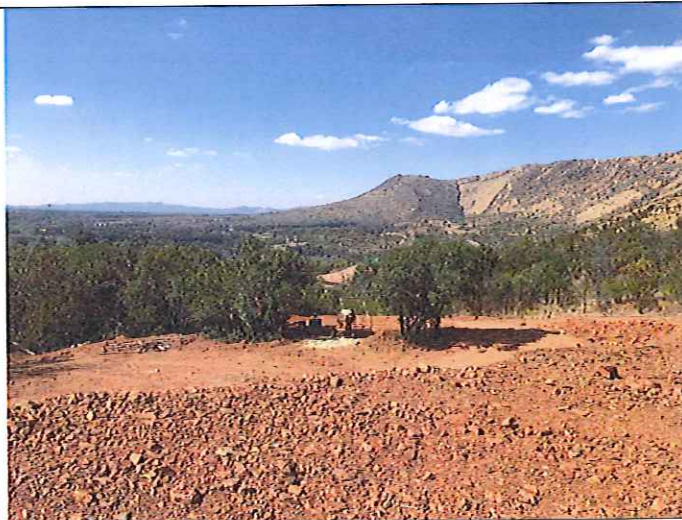


Area applied for picnic spot – not granted previously

## Expansion areas



Expansion Area 1 destined for new accommodation block (Accommodation block 5); west of conference block; Olifantsnek Dam visible as well as boundary wall along R24. Area is cleared because it is currently used for parking (overflow parking)  
25° 46' 50.8" South, 27° 15' 23.8" East



Expansion Area 2 destined for new accommodation block (Accommodation block 6); west of current accommodation blocks. Area is cleared because it is currently used for parking (overflow parking)  
25° 46' 46.1" South, 27° 15' 18.3" East