

BACKGROUND INFORMATION DOCUMENT

BASIC ASSESSMENT PROCESS
FOR THE DEVIATION OF THE AUTHORISED POWERLINE
FOR THE AUTHORISED MSENGE EMOYENI WIND
ENERGY FACILITY, EASTERN CAPE PROVINCE

JUNE 2022



Msenge Emoyeni Wind Farm (Pty) Limited, is proposing the deviation of the authorised overhead powerline for the authorised Msenge Emoyeni Wind Energy Facility (WEF) and the addition of a new on-site substation , access track and water course crossings to support connection of the authorised Msenge Emoyeni Wind Energy Facility (DFFE Ref: 12/12/20/1754/2) to the Poseidon Main Transmission Substation (MTS).

A 66kV powerline route with a corridor of approximately 300m (150m on either side of the centre line) is proposed to evacuate power from the authorised Msenge Emoyeni WEF; informed by the most feasible grid connection point into the national grid by providing suitable setbacks to the existing Amakhala and Nojoli wind farms' turbines, and to follow the existing Albany-Poseidon 132kV powerline as closely as possible, while reducing/optimizing crossing points.


The grid connection infrastructure related to the authorised Msenge Emoyeni WEF is located within the Cookhouse Renewable Energy Development Zone ("REDZ") and Eastern Power Corridor.

The authorised Msenge Emoyeni WEF is located approximately 20km south of the town of Bedford in the Eastern Cape Province.

The development has been selected as a preferred bidder project via private off take (i.e. private power purchase) procurement processes.

Following liaison with Eskom, it was determined that the authorised 132kV powerline routing will be required to be deviated from the authorised routing which falls outside of the previously assessed and authorised 20-30m wide servitude. This is in order to provide suitable setbacks to the existing Amakhala and Nojoli WEFs' turbines, and to follow the existing Albany-Poseidon 132kV powerline as closely as possible, while reducing/optimizing crossing points.





Aim of this background information document


This document aims to provide you, as an interested and/or affected party (I&AP), with:

- An overview of the proposed deviation of the powerline, which forms part of the authorised Msenge Emoyeni Wind Energy Facility.
- An overview of the BA process and specialists' assessments of the proposed grid infrastructure associated with the Msenge Emoyeni Wind Energy Facility.
- Details of how you can become involved in the BA process, receive information, or raise issues, which may concern and/or interest you.

Overview of the proposed grid infrastructure and associated infrastructure to support the authorised Msenge Emoyeni Wind Energy Facility.

The infrastructure and key components considered as part of this Basic Assessment process includes:

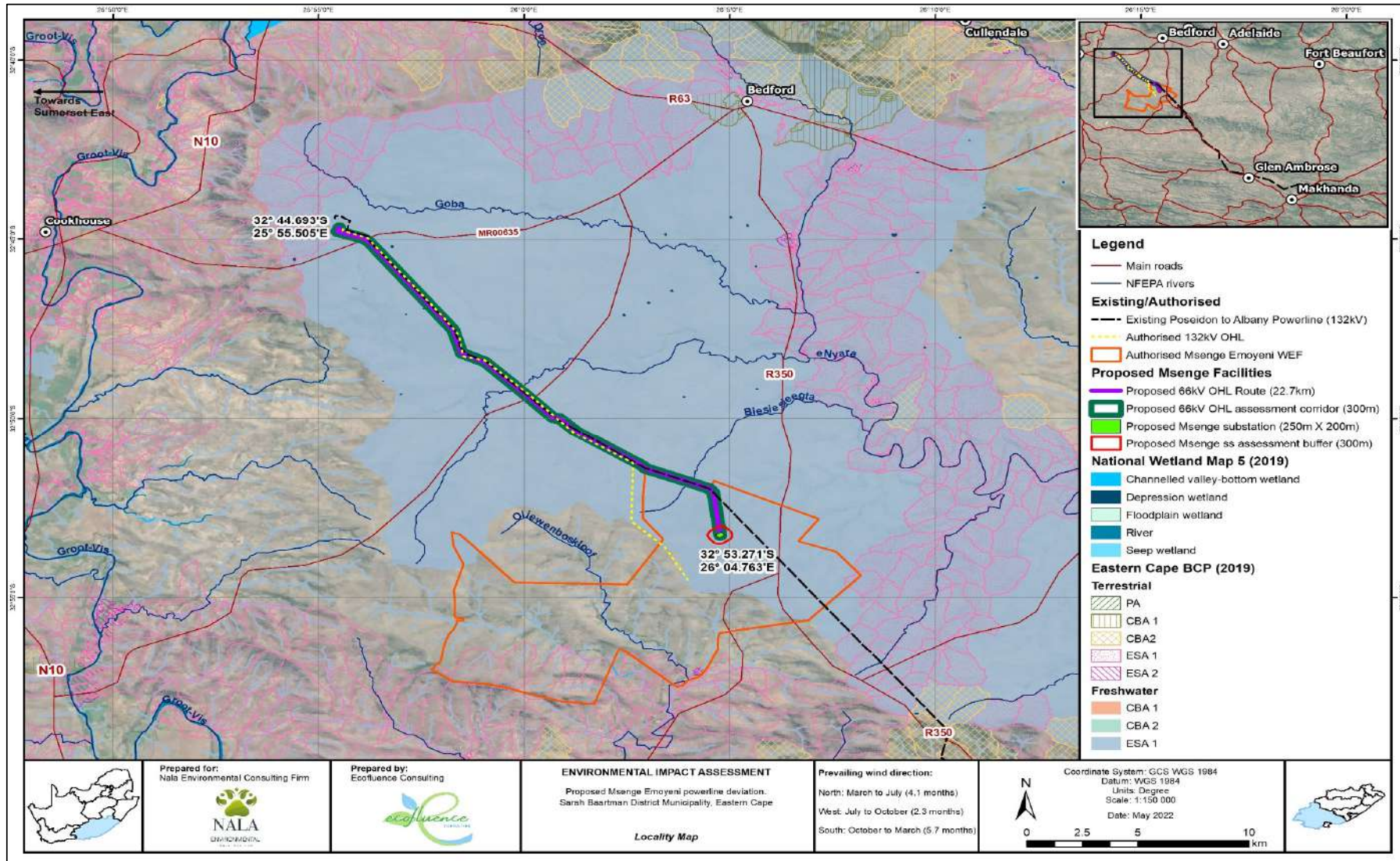
- A 66kV overhead single circuit powerline approximately 22,7km long in a 300m wide assessment corridor (150m on either side), from the proposed Msenge Emoyeni Wind Energy Facility onsite substation to the Poseidon Main Transmission Substation.
- Access tracks of up to 7m in width following the powerline route from the proposed Msenge Emoyeni Wind Energy Facility onsite substation to the Poseidon Main Transmission Substation to enable construction and maintenance activities.
- Water course crossings along the powerline route from the proposed Msenge Emoyeni Wind Energy Facility onsite substation to the Poseidon Main Transmission Substation.
- A 33kV/132kV on-site substation with a footprint occupying an area of 250m x 200m, within a 300m radius.



The following properties have been identified for the deviation of the new 66kV powerline and associated infrastructure for the associated Msenge Emoyeni WEF.

- Remaining Extent of Farm Kop Leegte No. 205
- Portion 2 of Farm 222 No. 222
- Portion 1 of Farm Normandale No. 206
- Portion 3 of Farm Plat House No. 203
- Remainder of Farm 225 No. 225
- Remainder of Farm 242 No. 242
- Remainder of Farm 148 No. 148
- Portion 3 of Farm 148 No.148
- Remainder of Farm 260 No. 260
- Portion 5 of Farm Van Wyks Kraal No.73

LOCALITY MAP OF THE PROPOSED DEVIATION OF THE AUTHORISED MSENGE EMOYENI WIND ENERGY FACILITY'S OVERHEAD POWERLINE



Prepared for:
Nala Environmental Consulting Firm

Prepared by:
Ecofluence Consulting

ENVIRONMENTAL IMPACT ASSESSMENT
 Proposed Msenge Emoyeni powerline deviation.
 Sarah Baartman District Municipality, Eastern Cape

Locality Map

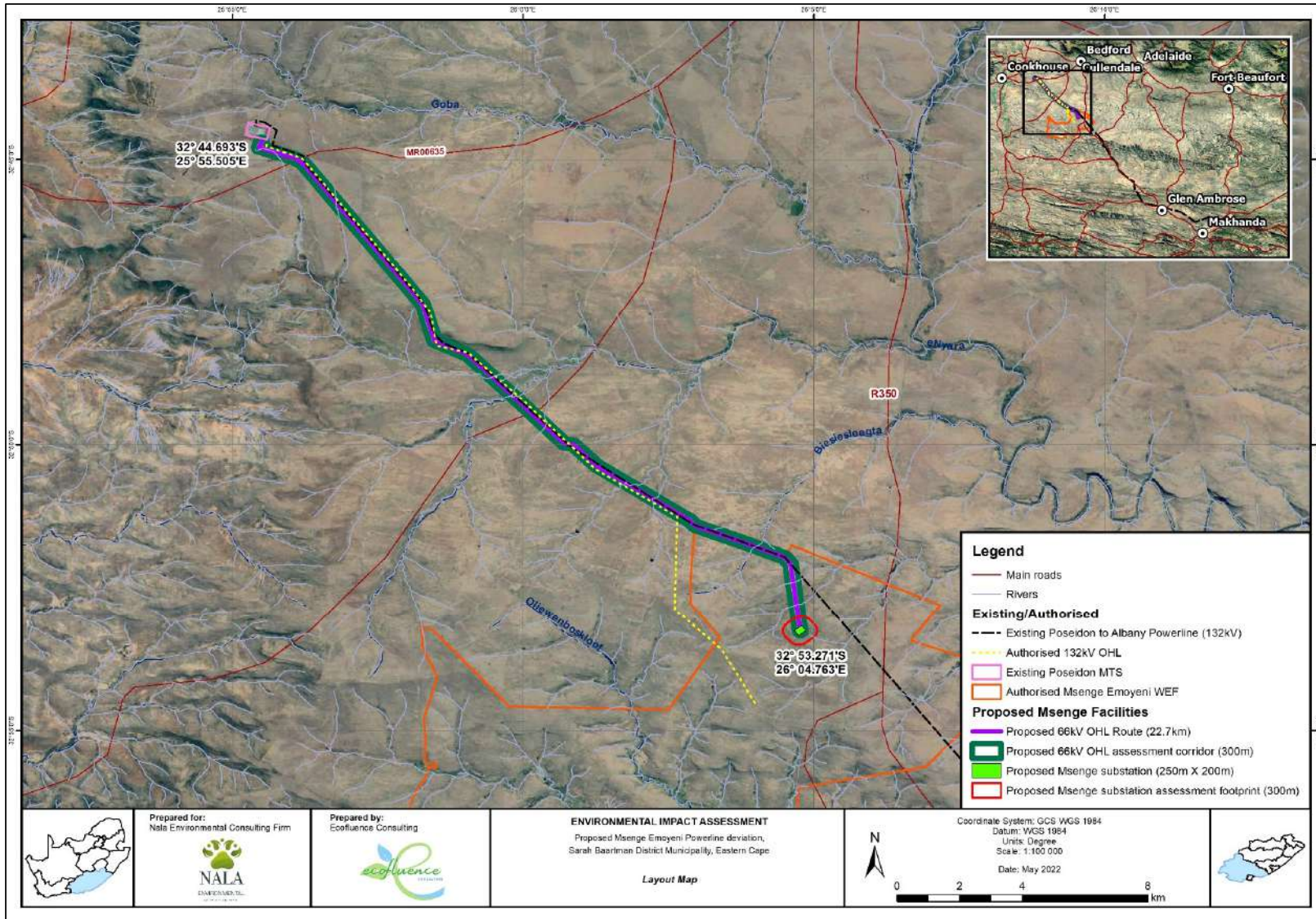
Prevailing wind direction:
 North: March to July (4.1 months)
 West: July to October (2.3 months)
 South: October to March (5.7 months)



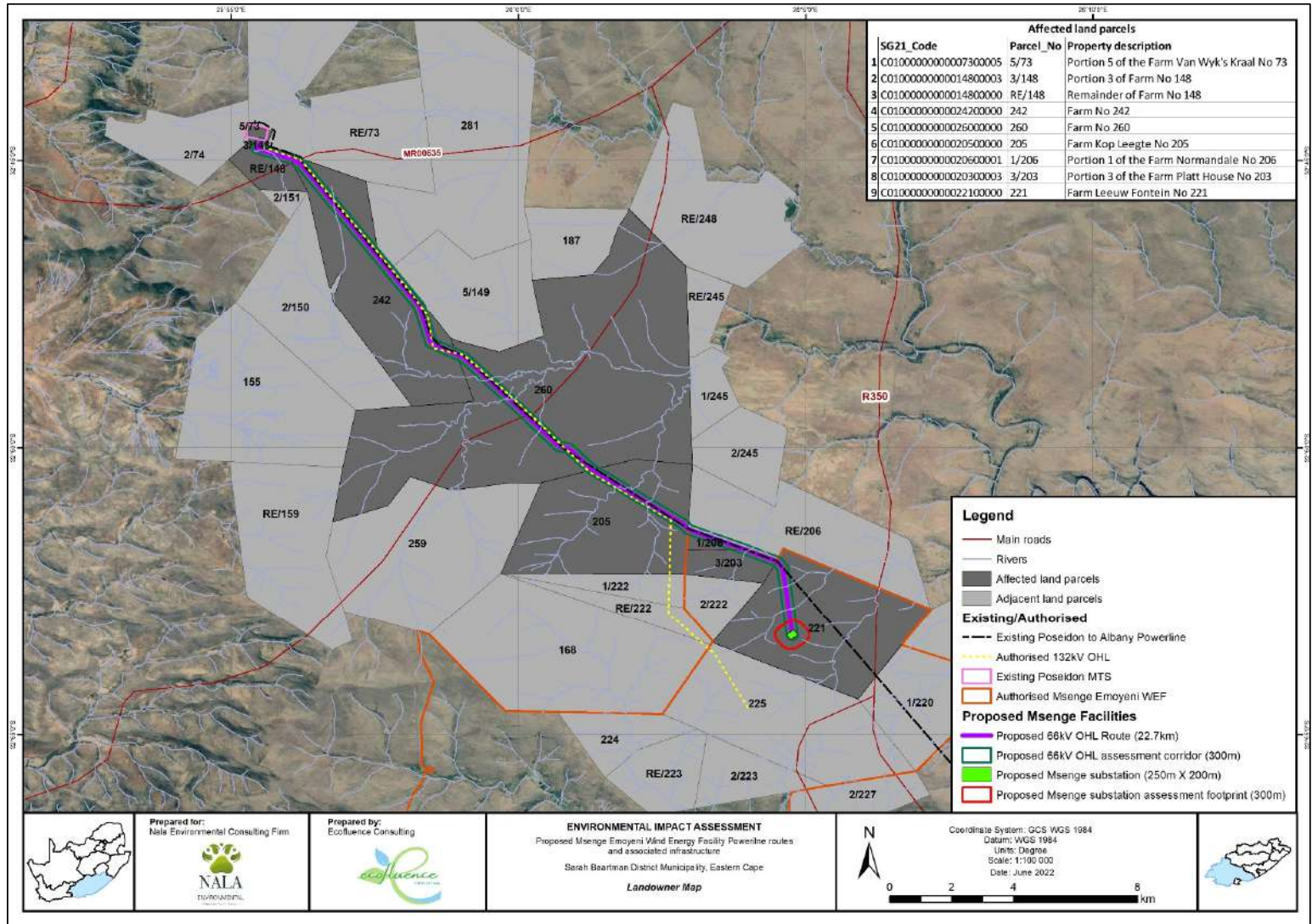
0 2.5 5 10 km



LAYOUT MAP OF THE PROPOSED DEVIATION OF THE AUTHORISED MSENGE EMOYENI WIND ENERGY FACILITY'S OVERHEAD POWERLINE



ADJACENT AND AFFECTED LANDOWNER MAP OF THE PROPOSED DEVIATION OF THE AUTHORISED MSENGE EMOYENI POWERLINE



BASIC ASSESSMENT PROCESS

As per the EIA Regulations published in terms of Section 24(5) of the National Environmental Management Act (NEMA, Act No 107 of 1998), the development of the proposed grid infrastructure to support the authorised Msenge Emoyeni Wind Energy Facility requires Environmental Authorisation (EA) from the National Department of Forestry, Fisheries and the Environment, (DFFE) (in consultation with the Eastern Cape Department of Economic Development, Environmental Affairs and Tourism for the development of the project. In terms of sections 24 and 24D of the National Environmental Management Act (No 107 of 1998), as read with the EIA Regulations, 2014, as amended (GNR 324 - 327), a Basic Assessment (BA) process is required to support the application for authorisation. The application for authorisation is required to be supported by comprehensive, independent environmental studies undertaken in accordance with the EIA Regulations, 2014, as amended, and relevant specialist protocols.



BASIC ASSESSMENT PROCESS

The BA is an effective planning and decision-making tool. It allows the environmental consequences resulting from the construction and operation of a project to be identified early in the planning process and appropriately managed. It provides the opportunity for the developer to be fore warned of potential environmental issues and allows for the resolution of the issue(s) reported on in the BA report, as well as opening a dialogue with interested and affected parties.

Nala Environmental has been appointed as the independent environmental consultant to undertake the required Basic Assessment process, in order to identify and assess all potential environmental impacts associated with the deviation of the new powerline, on-site substation and associated access tracks and water crossings which is associated with the authorised Msenge Emoyeni WEF, and recommend appropriate mitigation measures in the three Environmental Management Programmes (EMPrs) for the 66kV powerline and 33kV/132kV on-site substation (Generic EMPrs) and the access tracks and water course crossings.

As part of these environmental studies, I&APs will be actively involved through the public participation process being undertaken by Nala Environmental.



What are the potential environmental impacts associated with the project?

Based on the nature and extent of the proposed project, the nature of the affected area, and experience of the consultants on similar projects, a number of potential environmental impacts associated with the proposed project have been identified at this stage. Site-specific environmental specialist studies will be undertaken for the identified development areas in order to delineate areas of potential sensitivity, assess impacts associated with the project and make recommendations regarding avoidance, management and mitigation of impacts.

Specialist studies will include the following:

- » Terrestrial Ecological Impact Assessment
- » Avifauna Impact Assessment
- » Aquatic Impact Assessment
- » Soil and Agricultural Potential Impact Assessment
- » Heritage & Palaeontological Impact Assessments
- » Visual Impact Assessment

The specialists' studies will be informed by existing information, field observations and input from the public participation process.

As an I&AP, your input is considered as an important part of the process, and we urge your involvement.



Public Participation Process

The sharing of information forms basis of the public participation process and offers you the opportunity to become actively involved in the BA process from the outset. Comments and inputs from I&APs during the BA process are encouraged in order to ensure that all potential impacts are considered within the ambit of the study.

The public involvement process aims to ensure that:

- » Information containing all relevant facts in respect of the applications are made available to I&APs for review.
- » Participation by potential I&APs is facilitated in such a manner that I&APs are provided with a reasonable opportunity to comment on the applications.
- » Adequate review period is provided for I&APs to comment on the findings of the BA reports.

Your responsibilities as an I&AP

In terms of Section 24J of the National Environmental Management Act, Act 107 of 1998 and the Department of Environmental Affairs Public Participation Guideline 2017, as part of the BA process, an I&AP has the responsibility to:

- » Provide comment regarding the proposed project within the specified timeframes;
- » Submit written comment directly to the public participation team;
- » Disclose any direct business, financial, personal or other interest which that I&AP may have in the approval or refusal of the applications.



Comments and queries

Direct all comments, queries or responses to:

Nala Environmental

Arlene Singh

Waterfall, Johannesburg, 2090

Cell: 072 700 7048

Fax: 086 471 4190

Email: publicparticipation@nalaenvironmental.co.za

Post: Private Bag X26

Suite 548

Sunninghill, 2157

To view project documentation, visit

<https://nalaenvironmental.co.za/projects/>



How to become involved

1. By responding (by phone, fax or email) to our invitation for your involvement which has been advertised in local newspapers and on site.
2. By returning the attached Reply Form to the relevant contact person.
3. By contacting the consultants with queries or comments.
4. By reviewing and commenting on the BA report within the stipulated 30-day review period.

If you consider yourself an I&AP for the deviation of the authorised 132kV over head powerline to establish the proposed 66kV over head power line, 33kV/132kV on-site substation, access tracks and watercourse crossings from the proposed Msenge Emoyeni WEF onsite substation to the Poseidon MTS, we urge you to make use of the opportunities created by the public participation process to provide comment or raise those issues and concerns which affect and/or interest you, and about which you would like more information. Your input into this process forms a key element of the BA process.



**BASIC ASSESSMENT AND PUBLIC PARTICIPATION PROCESS
DEVIATION OF THE AUTHORISED OVERHEAD POWERLINE AND ADDITION OF AN ON-SITE SUBSTATION FOR THE AUTHORISED MSENGE EMOYENI WIND
ENERGY FACILITY, EASTERN CAPE PROVINCE**

June 2022

Return completed registration and comment form to: Arlene Singh of Nala Environmental

Phone:	084 2777 074
Mobile (incl. 'please call me', WhatsApp, Telegram):	072 700 7048
Fax:	086 471 4190
E-mail:	publicparticipation@nalaenvironmental.co.za
Postal Address:	Private Bag X26, Suite #548, Sunninghill, 2157

Your registration as an interested and/or affected party will be applicable for this project only and your contact details provided are protected by the PoPI Act of 2013

Please provide your complete contact details:

Name & Surname:			
Organisation:			
Designation:			
Postal Address:			
Telephone:			
Mobile:		Fax:	
E-mail:			
E-mail:			

Please register me as an Interested and Affected Party (I&AP) on the project's database (<u>please indicate your preference by the applicable box</u>):	YES	NO		
--	------------	-----------	--	--

In terms of EIA Regulations, 2014, as amended, Regulation 43(1), you are required to register as an I&AP to receive further correspondence regarding the Basic Assessment processes and to disclose any direct business, financial, personal or other interest which you may have in the approval or refusal of the application (add additional pages if necessary):

Please list your comments regarding the proposed project and the Basic Assessment Process (add additional pages if necessary):

Please provide contact details of any other persons who you regard as a potential interested or affected party:

Name & Surname:

Postal Address:

Telephone:

Mobile:

E-mail:
