

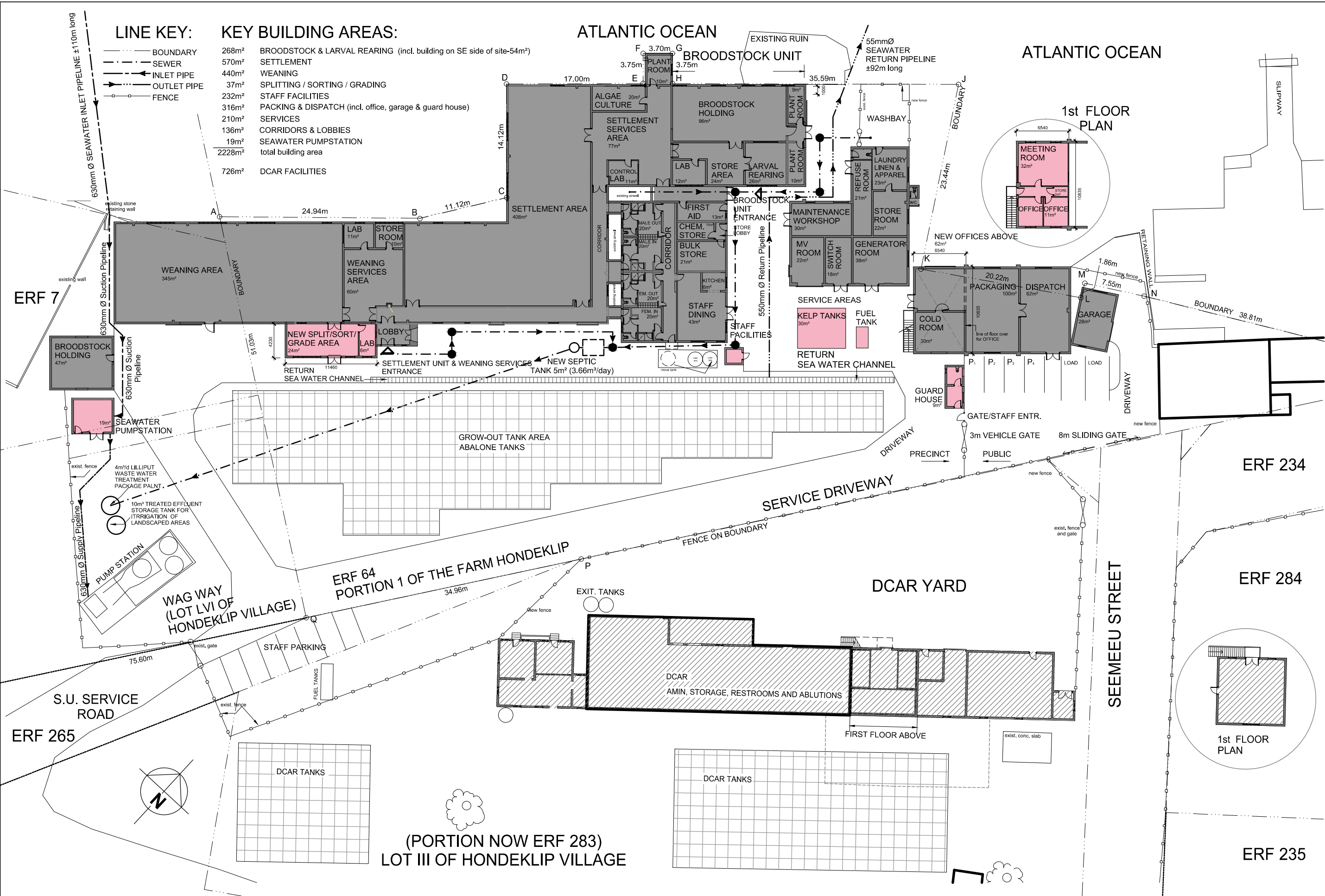
**LINE KEY:**

- BOUNDARY
- - - SEWER
- INLET PIPE
- - - OUTLET PIPE
- FENCE

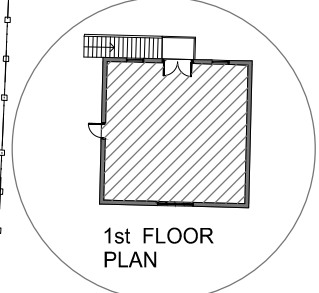
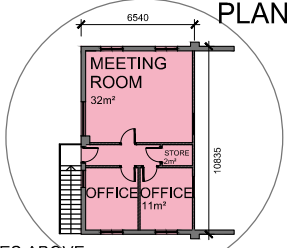
**KEY BUILDING AREAS:**

- 268m<sup>2</sup> BROODSTOCK & LARVAL REARING (incl. building on SE side of site-54m<sup>2</sup>)
- 570m<sup>2</sup> SETTLEMENT
- 440m<sup>2</sup> WEANING
- 37m<sup>2</sup> SPLITTING / SORTING / GRADING
- 232m<sup>2</sup> STAFF FACILITIES
- 316m<sup>2</sup> PACKING & DISPATCH (incl. office, garage & guard house)
- 210m<sup>2</sup> SERVICES
- 136m<sup>2</sup> CORRIDORS & LOBBIES
- 19m<sup>2</sup> SEAWATER PUMPSTATION
- 2228m<sup>2</sup> total building area
- 726m<sup>2</sup> DCAR FACILITIES

**ATLANTIC OCEAN**



**1st FLOOR PLAN**



ERF 7

ERF 265

ERF 64  
PORTION 1 OF THE FARM HONDEKLIP

ERF 234

ERF 284

ERF 235

WAG WAY  
(LOT LVI OF  
HONDEKLIP VILLAGE)

S.U. SERVICE  
ROAD

DCAR TANKS

(PORTION NOW ERF 283)  
LOT III OF HONDEKLIP VILLAGE

FASILITEITSBESTUUR  
DIE OU CONSERVATORIUM  
VAN REEBECKSTRAAT 10  
STELLENBOSCH 7600

PRIVAATSAK X1  
MATELAND  
7602

TELEFOON 021 808 4630  
FAXS 021 808 4299

UNIVERSITEIT-STELLENBOSCH-UNIVERSITY

FACILITES MANAGEMENT  
DIE OU CONSERVATORIUM  
10 VAN REEBECK STREEK  
STELLENBOSCH 7600

PRIVATSAK X1  
MATELAND  
7602

TELEFOON 021 808 4630  
FAX 021 808 4299

PROJECT/PROJEK:

**ABALONE HATCHERY  
FOR THE DIVISION OF AQUACULTURE  
UNIVERSITY OF STELLENBOSCH**

CONSULTANTS LOGO & INFORMATION:

**Groenewald preller**  
ARCHITECTS ARGITEKTE

CAPE TOWN SOUTH AFRICA TEL 27 21 438 1633 FAX 27 86 664 7028

email: gparch@new.co.za

TITLE / TITEL:

**HONDEKLIP BAY ABALONE PROJECT  
SITE LAYOUT** for  
ENVIRONMENTAL IMPACT STUDY

DATE: 2011-09-22  
DWS NO.: EIA 01  
SCALE: NTS