

APPENDIX C2:

Site Notice and Newspaper Advertisement

Site Notices

NOTICE OF SCOPING AND ENVIRONMENTAL IMPACT ASSESSMENT & PUBLIC PARTICIPATION PROCESS

GENERAL WASTE DISPOSAL SITE AT THE ESKOM MAJUBA POWER STATION NEAR AMERSFOORT, MPUMALANGA PROVINCE

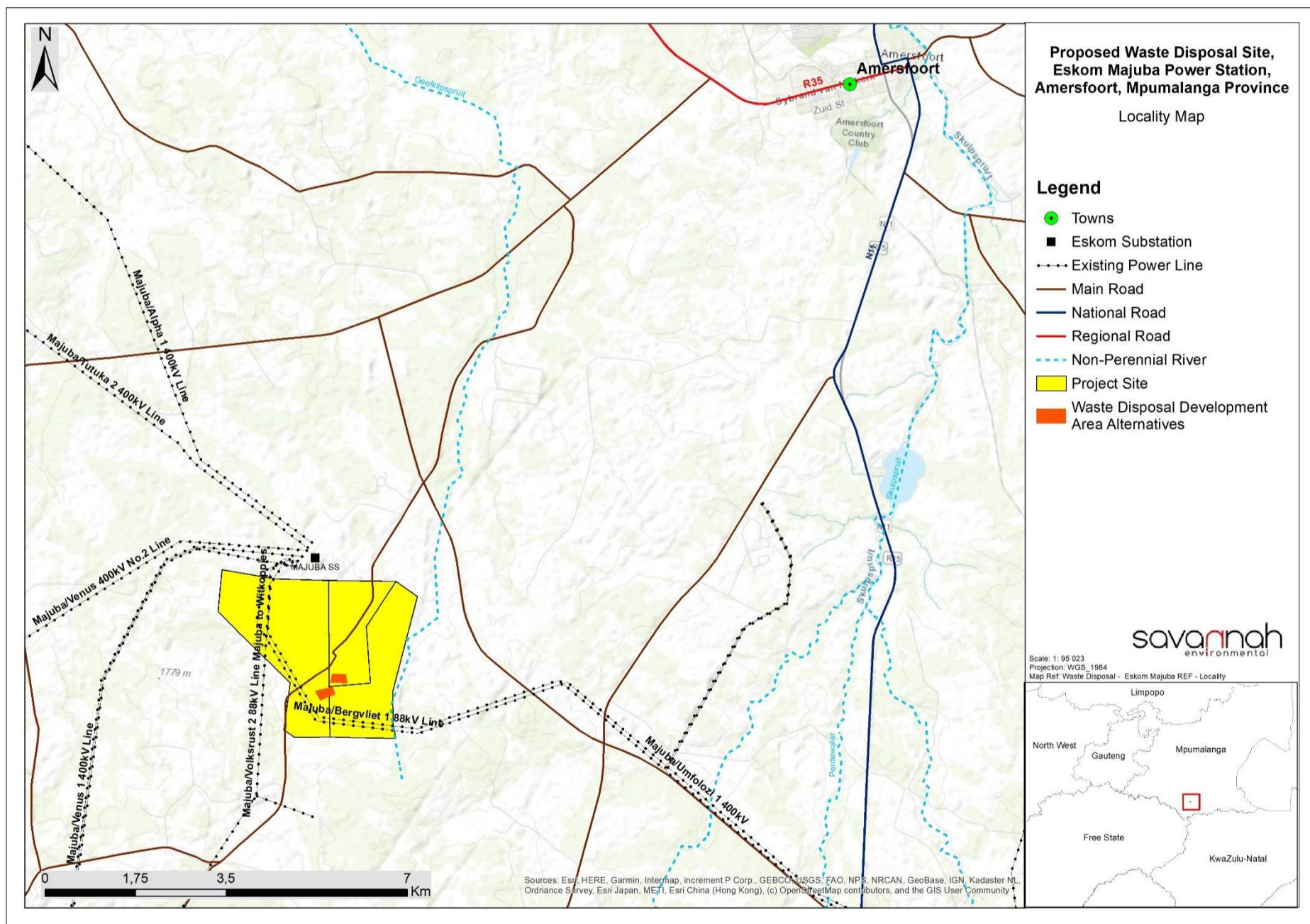
Applicant: Eskom Majuba Power Station

Proposed Activity: The development of a new general waste disposal site adjacent to the existing closed landfill site at the Eskom Majuba Power Station.

Associated infrastructure will include the following:

- » Fencing with appropriate signage
- » An adequate access road
- » An access control gate
- » A guard house with an ablution facility
- » Covered parking facilities
- » A designated area for parking and servicing of plant and machinery
- » Sorting and storage facilities for recyclables
- » A conservancy tank connected to the ablution facility
- » Adequate water and electricity connection from the existing rising mains
- » Stormwater drainage network and evaporation pond for the stormwater entering the site through the waste body
- » A leachate management system.

Location: Portions 1, 2 and 6 of the Farm Witkoppies 81HS, approximately 13km southwest of Amersfoort and 40km north-northwest of Volksrust in the Dr Pixley Ka Seme Local Municipality, which forms part of the Gert Sibande District Municipality, in the Mpumalanga Province.



Scoping and Environmental Impact Assessment Process: An Integrated Application for Environmental Authorisation (EA) in terms of the National Environmental Management Act (No. 107 of 1998) (NEMA) and a Waste Management Licence (WML) in terms of the National Environmental Management: Waste Act (No. 59 of 2009) is being undertaken for the project. A full Scoping and Environmental Impact Assessment (S&EIA) process is required in support of this application process. Savannah Environmental has been appointed as the Independent Environmental Assessment Practitioner (EAP) to undertake the required S&EIA and public participation process for the project.

To obtain further information and register on the project database, please submit your name, contact information and interest in the project to the contact person below.

Tumelo Mathulwe of Savannah Environmental

PO Box 148, Sunninghill, 2157
Tel: 011 656 3237 / Mobile: 060 978 8396
Fax: 086 684 0547
Email: publicprocess@savannahsa.com
Website: www.savannahsa.com

Proof of Site Notice: Placed on 26 October 2021



Co-ordinates: 27°00'24.0"S ; 29°52'10.8"E
Placed at Amersfoort Public Library

Proof of Site Notice: Placed on 26 October 2021



Co-ordinates: 27°06'13.3"S ; 29°46'42.2"E
Placed at Majuba Main Entrance

Proof of Site Notice: Placed on 26 October 2021



Co-ordinates: 27°09'40.7"S ; 29°37'36.4"E
Placed at Perdekop Public Library

Advertisements

**NOTICE OF SCOPING AND ENVIRONMENTAL IMPACT ASSESSMENT &
PUBLIC PARTICIPATION PROCESS**

**GENERAL WASTE DISPOSAL SITE AT THE ESKOM MAJUBA POWER STATION NEAR
AMERSFOORT, MPUMALANGA PROVINCE**

Applicant: Eskom Majuba Power Station

Proposed Activity: The development of a new general waste disposal site adjacent to the existing closed landfill site at the Eskom Majuba Power Station.

Associated infrastructure will include the following:

- » Fencing with appropriate signage
- » An adequate access road
- » An access control gate
- » A guard house with an ablution facility
- » Covered parking facilities
- » A designated area for parking and servicing of plant and machinery
- » Sorting and storage facilities for recyclables
- » A conservancy tank connected to the ablution facility
- » Adequate water and electricity connection from the existing rising mains
- » Stormwater drainage network and evaporation pond for the stormwater entering the site through the waste body
- » A leachate management system.

Location: Portions 1, 2 and 6 of the Farm Witkoppies 81HS, approximately 13km southwest of Amersfoort and 40km north-northwest of Volksrust in the Dr Pixley Ka Seme Local Municipality, which forms part of the Gert Sibande District Municipality, in the Mpumalanga Province.

Scoping and Environmental Impact Assessment Process: An Integrated Application for Environmental Authorisation (EA) in terms of the National Environmental Management Act (No. 107 of 1998) (NEMA) and a Waste Management Licence (WML) in terms of the National Environmental Management: Waste Act (No. 59 of 2009) is being undertaken for the project. A full Scoping and Environmental Impact Assessment (S&EIA) process is required in support of this application process. Savannah Environmental has been appointed as the Independent Environmental Assessment Practitioner (EAP) to undertake the required S&EIA and public participation process for the project.

Scoping Report Available for Review and Comment: The Scoping Report is available for download, review, and comment on the Savannah Environmental website (<https://www.savannahsa.com/public-documents/other/>). The 30-day review and comment period of the Scoping Report is from **Friday, 12 November 2021** until **Monday, 13 December 2021**. The final date to submit comments is **Monday, 13 December 2021**.

To obtain further information and register on the project database, please submit your name, contact information and interest in the project to the contact person below.

Tumelo Mathulwe of Savannah Environmental

Post: PO Box 148, Sunninghill, 2157

Johannesburg

Tel: 011 656 3237

Fax: 086 684 0547

Email: tumelo@savannahsa.com

Website: www.savannahsa.com

The logo for Savannah Environmental features the word "savannah" in a lowercase, sans-serif font. The letter "a" is stylized with a red dot. Below "savannah" is the word "environmental" in a smaller, lowercase, sans-serif font.

NOTICE OF SCOPING AND ENVIRONMENTAL IMPACT ASSESSMENT & PUBLIC PARTICIPATION PROCESS

GENERAL WASTE DISPOSAL SITE AT THE ESKOM MAJUBA POWER STATION NEAR AMERSFOORT, MPUMALANGA PROVINCE

Applicant: Eskom Majuba Power Station

Proposed Activity: The development of a new general waste disposal site adjacent to the existing closed landfill site at the Eskom Majuba Power Station.

Associated infrastructure will include the following:

- »Fencing with appropriate signage
- »An adequate access road
- »An access control gate
- »A guard house with an ablution facility
- »Covered parking facilities
- »A designated area for parking and servicing of plant and machinery
- »Sorting and storage facilities for recyclables
- »A conservancy tank connected to the ablution facility
- »Adequate water and electricity connection from the existing rising mains
- »Stormwater drainage network and evaporation pond for the stormwater entering the site through the waste body
- »A leachate management system.

Location: Portions 1, 2 and 6 of the Farm Witkoppies 81HS, approximately 13km southwest of Amersfoort and 40km north-northwest of Volksrust in the Dr Pixley Ka Seme Local Municipality, which forms part of the Gert Sibande District Municipality, in the Mpumalanga Province.

Scoping and Environmental Impact Assessment Process: An Integrated Application for Environmental Authorisation (EA) in terms of the National Environmental Management Act (No. 107 of 1998) (NEMA) and a Waste Management Licence (WML) in terms of the National Environmental Management: Waste Act (No. 59 of 2009) is being undertaken for the project. A full Scoping and Environmental Impact Assessment (S&EIA) process is required in support of this application process. Savannah Environmental has been appointed as the Independent Environmental Assessment Practitioner (EAP) to undertake the required S&EIA and public participation process for the project.

Scoping Report Available for Review and Comment: The Scoping Report is available for download, review, and comment on the Savannah Environmental website (<https://www.savannahsa.com/public-documents/other/>). The 30-day review and comment period of the Scoping Report is from **Friday, 12 November 2021** until **Monday, 13 December 2021**. The final date to submit comments is **Monday, 13 December 2021**.

To obtain further information and register on the project database, please submit your name, contact information and interest in the project to the contact person below.

Tumelo Mathulwe of Savannah Environmental

Post: PO Box 148, Sunninghill, 2157

Johannesburg

Tel: 011 656 3237

Fax: 086 684 0547

Email: nicolene@savannahsa.com

Website: www.savannahsa.com

savannah
environmental

Tearsheet

(To be included in the final Scoping Report)