



MP STREAM ENVIRONMENTAL AND SAFETY PLANNERS (PTY) LTD

Reg No: 2021/318370/07

BACKGROUND INFORMATION DOCUMENT (BID): SCOPING AND ENVIRONMENTAL IMPACT ASSESSMENT FOR THE PROPOSED CLEARANCE OF APPROXIMATELY 60HA OF VEGETATION ON PORTION 5 OF THE FARM DUMA 201-JU, FOR THE EXPANSION OF EXISTING FARMING ACTIVITIES, CITY MBOMBELA, MPUMALANGA PROVINCE

PURPOSE OF THIS DOCUMENT

MP Stream Environmental and Safety Planners (Pty) Ltd was appointed by AEONIK FARMS SEQUOIA (Pty) Ltd to conduct a Scoping and Environmental Impact Assessment process in terms of the National Environmental Management Act 107, 1998. The project will be registered with the Department of Agriculture Rural Development, Land & environmental Affairs (DARDLEA).

The purpose of this Background Information Document (BID) is to inform interested and/or affected parties (I&AP's) of the Scoping and Environmental Impact Assessment Process that will be conducted for the proposed clearing of indigenous vegetation for expansion of the current farming footprint (macadamia).

In addition to supplying information about the proposed Project, this BID will also provide I&AP's with the opportunity to:

- Register as stakeholders in the public participation process; and
- Provide initial comments on the proposed project.

BACKGROUND TO THE PROPOSED PROJECT

AEONIK FARMS SEQUOIA (Pty) Ltd is the Developer of the proposed clearing of indigenous vegetation for citrus plantation. The proposed project seeks to clear approximately 60HA of indigenous vegetation. The total project area is 220HA of which 19.8HA are already being cultivated.

LEGAL REQUIREMENTS

The Scoping and Environmental Impact Assessment process for this assessment will be conducted in terms of the National Environmental Management Act (Act 107 of 1998) (NEMA) 2014 EIA regulations (GNR 982, of 14 December 2014), as amended in 2017.

The NEMA 2014 EIA regulations (as amended) list activities that may have a significant impact on the environment, and which consequently require Environmental Authorisation prior to commencement.

The following listed activity is triggered by the proposed expansion of the farming activities:

- *GNR 984 (Listing Notice 2) Item 15: The clearance of an area of 20 hectares or more, except where such clearance of indigenous vegetation is required for*
 - *(i) the undertaking of a linear activity or*
 - *(ii) maintenance purposes undertaken in accordance with a maintenance management plan.*

The Competent Authority, as described according to the EIA Regulations 2014 (as amended in 2017), for this proposed project is the Department of Agriculture Rural Development, Land & Environmental Affairs (DARDLEA) which will ultimately be responsible for providing a decision on whether the proposed Activity will be granted Environmental Authorisation (EA) in terms of NEMA.

WHAT IS A SCOPING AND ENVIRONMENTAL IMPACT ASSESSMENT?

A Scoping Environmental Impact Assessment is a process used to assess the negative and positive consequences of the proposed activities on the immediate and surrounding environment and propose recommendations to enhance positive impacts and reduce negative impacts.

The Scoping and Environmental Impact Assessment process will include:

- a) Stakeholder engagement;
- b) Environmental assessment of current site conditions;
- c) A description of the activities commenced with;
- d) Description of the environment that was affected;
- e) Description of need and desirability of the activities commenced with;
- f) Identification of possible alternatives;
- g) Ecological and Heritage Impact Assessment: and
- h) Description and assessment of the significance of environmental impacts.

Consideration of comments received from various authorities, stakeholders and Interested and Affected Parties, forms an intrinsic part of this process. Authority decision-making and a public appeal opportunity will occur after the submission of the final Scoping and Environmental Impact Assessment Report to DARDLEA.

THE PUBLIC PARTICIPATION PROCESS

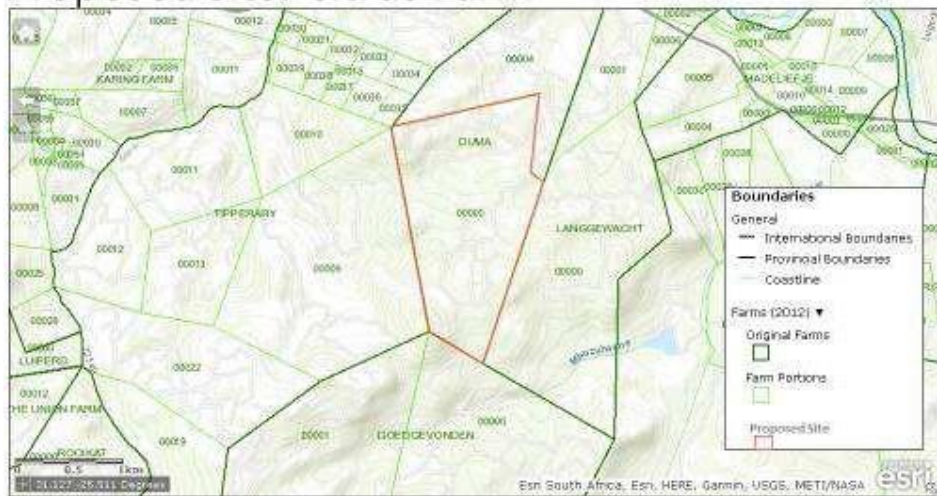
During the public participation phase, consultation with the following parties will take place:

- Relevant authorities at various levels;
- Relevant stakeholders;
- The proponent; and
- The public at large.

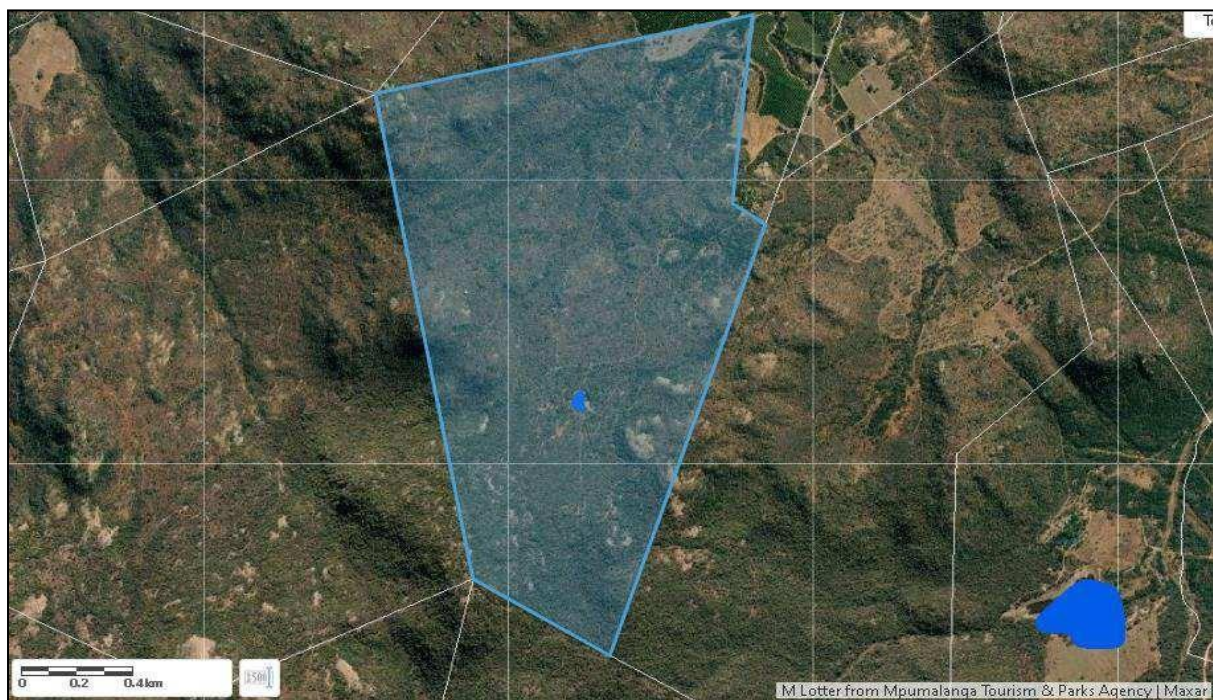
The following activities will take place as part of public participation:

- Advertising: On-site and in a local newspaper;
- Supplying people with an opportunity to comment and register as interested and affected parties on the Draft Scoping Report as well as Draft Environmental Impact Assessment Report. I&APs will be notified when the documents are available for review and will then have a 30-day opportunity to comment on the information provided, prior to submission to the DARDLEA for consideration.

Proposed site: Citrus Farm



Area: approximately 230.301 Hectares



REGISTRATION & COMMENT SHEET

**BACKGROUND INFORMATION DOCUMENT (BID) SCOPING AND ENVIRONMENTAL IMPACT ASSESSMENT
FOR THE PROPOSED EXPANSION OF FARMING ACTIVITIES ON PORTION 5 OF THE FARM DUMA 201-JU, CITY
OF MBOMBELA MUNICIPALITY, MPUMALANGA PROVINCE**

Contact Information:	
Title:	Name:
Organisation:	Nature of interest:
Postal Address:	Telephone number:
	Mobile number:
	Email:

*The NEMA EIA Regulations, 2014, require that an IAP discloses any direct business, financial, personal or other interest in the approval or refusal of the application. **Preferred method of communication. The absence of email / facsimile facilities may result in a delay in receipt of IAP notifications. Please write clearly.

[illegible]