

BACKGROUND INFORMATION DOCUMENT

PROPOSED EXPANSION OF THE TENTED CAMP AT NKOMAZI GAME RESERVE, MPUMALANGA PROVINCE

INVITATION TO REGISTER AND COMMENT

AURECON REFERENCE No: 506361

PURPOSE OF THIS DOCUMENT

The purpose of this Background Information Document (BID) is to provide stakeholders with the opportunity to register as interested and affected parties in the Basic Assessment process and to obtain their initial comments on the proposed project.

The purpose of the Basic Assessment is to identify and evaluate feasible alternatives and potential impacts, and to recommend measures to avoid or reduce negative impacts and enhance positive impacts. The decision-making authority is the Mpumalanga Department of Agriculture, Rural Development, Land and Environmental Affairs (DARDLEA) and the Environmental Impact Assessment Regulations, 2014, as amended.

Please register yourself as an interested and affected party and submit your comments on the proposed project.

Either complete a Response Form, write a letter, call or e-mail the public participation office.

Public Participation office

Anne-Mari White
Aurecon South Africa (Pty) Ltd
10 Nel Street, Sonheuwel Central,
Nelspruit, 1200

Tel: (013) 752 7055

Fax: 086 5711464

Email:

Anne-Mari.White@aurecongroup.com

YOUR COMMENT IS IMPORTANT

Your comment on any aspect of the proposed project, the Basic Assessment, its public participation process and issues that need to be investigated, will help focus the process and assist the authorities in their decision-making.

Background

Aurecon South Africa (Pty) Ltd was appointed by Nkomazi Game Reserve (Pty) Ltd, to provide environmental services for the Basic Assessment Process (BA) for the proposed expansion of the tented camp at Nkomazi Game Reserve, located near Emanzana, Albert Luthuli Local Municipality, Mpumalanga Province.

The proposed project entails the expansion of the footprint of their current tented camp facilities by constructing an additional 10 tents on the farm Nkomazi 772-JT.

Legal Requirements

National Environmental Management Act 107 of 1998:

The Environmental Impact Assessment Regulations, Regulation GN 983 and GN 985 of 2014, (as amended in 2017), promulgated in terms of the National Environmental Management Act (NEMA), lists activities which may not commence without a BA process and environmental authorisation from the competent authority, in this case the Mpumalanga Department of Agriculture, Rural Development, Land and Environmental Affairs (DARDLEA).

With the information available, the relevant listed activities read as follows:

- **GNR 985 of 2014, Activity 12 (As amended):** The clearance of an area of 300 square metres or more of indigenous vegetation except where such clearance of indigenous vegetation is required for maintenance purposes undertaken in accordance with a maintenance management plan:
(f) Within Mpumalanga, (iii) On land, where at the time of the coming into effect of this Notice or thereafter such land was zoned open space, conservation or had an equivalent zoning or proclamation in terms of NEMPAA.
- **GNR 985 of 2014, Activity 17 (As amended):** The expansion of a resort, lodge, hotel, and tourism or hospitality facilities where the development footprint will be expanded.
(f) Within Mpumalanga: (ii) Outside urban areas in (aa) a Protected Area identified in terms of the (NEMPAA)

National Water Act 36 of 1998

Nkomazi Game Reserve was recently issued with a Water Use License for all the water use activities taking place within the reserve. Due to the expansion, Nkomazi Game Reserve will apply for an amendment of their Water Use License to include all new structures and infrastructure affecting water resources.

Application will be amended to increase the volume of water abstracted for domestic purposes as well as to include all structures located within 500m from a watercourse. Amendment will therefore be made in terms of the following water uses:

Section 21 (a): Abstraction of water from a water resource;

Section 21 (i): Altering the bed, banks, course or characteristics of a watercourse.

What is a Basic Assessment?

A BA is a short environmental impact assessment process used to identify and assess potential negative and positive consequences of a proposed project and recommend ways to enhance positive impacts and to avoid or reduce negative impacts. The BA process will include:

- a) Stakeholder engagement;
- b) Assessment of current site conditions;
- c) A description of the proposed activity;
- d) Description of the environment which may be affected;
- e) Description of the need and desirability of the proposed activity and identification of alternatives;
- f) Assessment of all environmental impacts identified;
- g) Authority decision-making process and a public appeal opportunity will occur after this phase.

Process to be followed

Consideration of authority and stakeholder comments forms an intrinsic part of this process. In terms of the Basic Assessment process, authority decision-making and a public appeal opportunity will occur after the submission of the final Basic Assessment Report to DARDLEA.

During the public participation phase, consultation with the following parties will take place:

- o Relevant authorities at various levels;
- o Relevant stakeholders;
- o The proponent; and
- o The public at large.

The following activities will take place as part of public participation:

- o Advertising: On-site and in a local newspaper;

- Supplying people with an opportunity to comment and register as interested and affected parties; and
- The Draft Basic Assessment Report will be made available for public review. I&APs will be notified when the document will be available for review and will then have a 30-day opportunity to comment on the draft report prior to submission to the LEDET for consideration;

Once DARDLEA has made a decision, all registered I&APs will be notified of the decision and where the decision will be available for review.

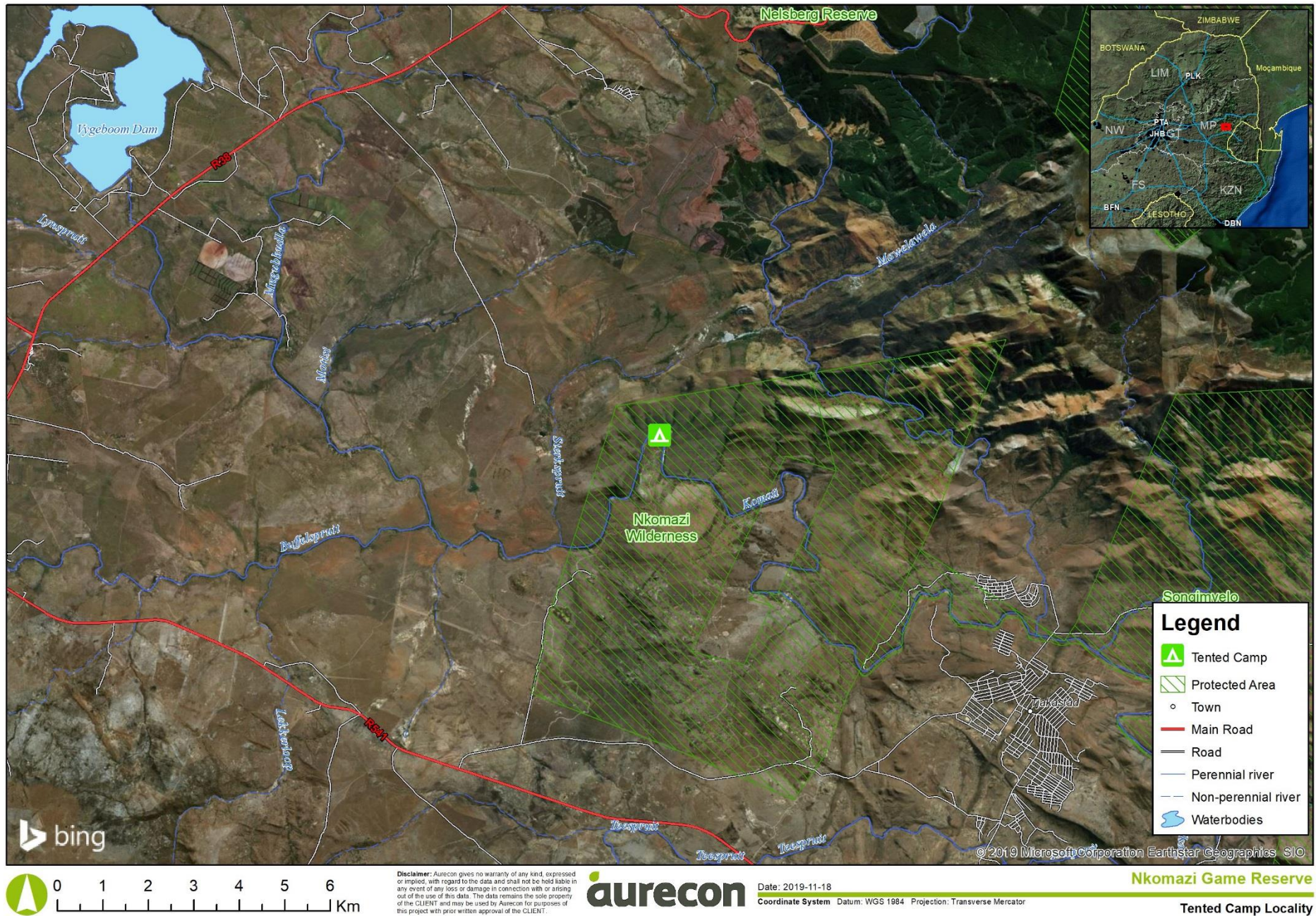


Figure 1: Locality map of the tented camp at Nkomazi Game Reserve, near Emanzana, Albert Luthuli Local Municipality

Environmental Basic Assessment for the
Proposed expansion of tented camp at Nkomazi Game Reserve,
Mpumalanga Province

**INVITATION TO REGISTER AND COMMENT,
December 2019**

Please complete and return to Aurecon to be included in the public participation process:

10 Nel Street, Sonheuwel Central, Tel: 013 752 7055

Nelspruit, 1200

Fax: 086 571 1464

Email: Anne-Mari.White@aurecongroup.com

TITLE		FIRST NAME	
INITIALS		SURNAME	
ORGANISATION			
POSTAL ADDRESS			
		POSTAL CODE	
TEL NUMBER		FAX NUMBER	
CELL NUMBER			
E-MAIL			

Yes, I would like to participate in this Basic Assessment ☐ YES

No, I am not interested ☐ NO

COMMENTS: (please use separate sheets if you wish)

1. The following issues must be considered in the Basic Assessment process:

.....

.....

.....

.....

.....

2. Please add the following people / organisations to the mailing list:

.....

.....

.....

We thank you for your participation