

MARCH 2016

ENVIRONMENTAL IMPACT ASSESSMENT PROCESS

CONSTRUCTION OF THE PROPOSED  
METALS INDUSTRIAL CLUSTER AND  
ASSOCIATED INFRASTRUCTURE

NEAR KURUMAN  
NORTHERN CAPE PROVINCE

BACKGROUND INFORMATION DOCUMENT



**Economic Development & Tourism**

Department:  
Economic Development & Tourism  
NORTHERN CAPE PROVINCE



The Northern Cape Department of Economic Development and Tourism propose the construction of a Metals Industrial Cluster (hereafter referred to as the Cluster) on ERF 6253 (Portion of ERF 1) ~2km south east from the town of Kuruman. The proposed site falls under the jurisdiction of the Ga-Segonyana Local Municipality and within the greater John Taolo Gaetsewe District Municipality in the Northern Cape Province. The Cluster is planned to be an industrial park anchored around steel and metals manufacturing while allowing for other related industries to be located and operate within the Cluster.

The Cluster is expected to be developed and transition through four phases as follows: i) Phase 1 which is considered to be short term; ii) Phase 2 which is considered to be medium term; iii) Phase 3 which is considered to be long term; and iv) Phase 4 which is intended to cater to the expansion of the Cluster beyond a 20-year timeframe planned for the 3 phases.

The establishment of the Metals Industrial Cluster forms part of a drive for industrial and economic development and growth within the Northern Cape Province.

### AIM OF THIS BACKGROUND INFORMATION DOCUMENT

This document aims to provide you, as an interested and/or affected party (I&AP), with:

- » An overview of the proposed Metals Industrial Cluster.
- » An overview of the EIA process (including a Scoping Phase and an EIA Phase) and the specialist studies being undertaken to assess the potential impacts, both positive and negative of the proposed development.
- » Details of how you can become involved in the EIA process, receive information, or raise issues which may concern and/or interest you.

### OVERVIEW OF THE PROPOSED PROJECT

The proposed site, ERF 6253 (Portion of ERF 1) with an extent of 47ha, has been identified by the developer as a suitable site which has the potential for the development of a Metals Industrial Cluster.

For the development to be successful and thrive, not only as an industrial cluster but as a successful business venture, sufficient space is required for the development to be constructed and operated on. The development footprint of the Cluster will occupy an area of 47ha, thus resulting in the entire affected property being developed.

The property proposed for the development is owned by the Ga-Segonyana Local Municipality, which is the associated local municipality of the area within which the site is located. Access to the site is possible via the national road (N14), which is located approximately 300m to the north of the site, and an unnamed secondary road which connects to the N14 and traverses the western boundary of the site.

The Cluster will consist predominantly of Small, Medium and Micro-sized Enterprises (SMME) and Small and Medium Enterprises (SME) companies with an increasing number of larger firms expected over time. The Cluster will be driven by a Cluster Management Company (CMC) which will initially be sponsored and funded by the Northern Cape Department of Economic Development and Tourism. Incentives will be offered to Cluster Member Firms (CMFs) and will include shared infrastructure, facilities and services, as well as access to funding. Shared infrastructure will include a common boundary fence, a security checkpoint, and utility connection points and roads infrastructure within the Cluster.

The Cluster will include basic infrastructure that will be required for the operation of the development. The basic infrastructure to be constructed includes:

- » Buildings (warehousing, administrative buildings, skills development centre etc.);
- » Landscaping;
- » Parking;
- » Fencing;
- » Connectivity infrastructure;
- » Bulk services;
- » Utility; and
- » Security.

Any entity or company (CMF) planning to be located within the Metals Industrial Cluster will have to make provision for the specific infrastructure that would be required for the operation of the specific entity and would require the undertaking of its own permits and authorisations in terms of the legal requirements.

### ENVIRONMENTAL IMPACT ASSESSMENT PROCESS

According to the EIA Regulations published in terms of Section 24(5) of the National Environmental Management Act (NEMA, Act No. 107 of 1998), the Metal Industrial Cluster requires authorisation from the Northern Cape Department of Environment and Nature Conservation (DENC) for the construction and operation of the Cluster. In terms of Section 24(5) of NEMA and the EIA Regulations 2014, Scoping and EIA Processes are required to be undertaken for the proposed project. An EIA is an effective planning and decision-making tool. It allows the potential environmental consequences resulting from a proposed activity to be identified and appropriately managed during its establishment and its operation. It provides the opportunity for the applicant to be fore-warned of potential environmental issues, and allows for resolution of the issue(s) reported on in the EIA report as well as dialogue with I&APs.

Savannah Environmental has been appointed by the Northern Cape Department of Economic Development and Tourism as the independent environmental consultant to undertake the required Scoping and EIA processes. In order to obtain authorisation, comprehensive, independent environmental studies must be undertaken in accordance with the EIA Regulations. Site-specific studies will be undertaken to identify and assess the localised impact of the proposed development, considering the establishment of basic infrastructure and mainly relating to the clearance of vegetation, in order to delineate areas of sensitivity within ERF 6253 (Portion of ERF 1). Once the constraining environmental factors have been determined, a general layout for the development indicating suitable zoning for the Metals Industrial Cluster can be finalised. Appropriate mitigation and management measures will be recommended within an Environmental Management Programme (EMPr). As part of these environmental studies, I&APs will be actively involved through the public involvement process.

### WHAT ARE THE POTENTIAL ENVIRONMENTAL IMPACTS ASSOCIATED WITH THE PROPOSED PROJECT?

Potential environmental impacts associated with the establishment of the basic infrastructure will be assessed by specialists through the following studies:

Ecology, flora and fauna assessment - to determine the potential impact of the construction and the associated disturbance of vegetation on the ecology and biodiversity of the site.

Heritage impact assessment - to determine the potential of disturbance to or destruction of heritage sites during the construction phase as a result of excavation activities.



Social impact assessment - to determine the positive socio-economic opportunities as well as the negative socio-economic impacts that may occur with the development of the Cluster.

The EIA process will be separated into two distinct phases:

Scoping Phase Study - A desk-top study wherein potential issues associated with the proposed Metals Industrial Cluster are identified and those issues requiring further investigation through the EIA Phase are highlighted.

EIA Phase Assessment - A detailed study of the potentially significant impacts identified in the Scoping Phase. Specialist studies will be undertaken in order to determine the nature and significance of the potential impacts associated with the development of the basic infrastructure. These specialist studies will be informed by existing information, field observations and input from the public participation process. Practical and achievable mitigation measures will be recommended in order to minimise potentially significant impacts identified. These recommendations will be included within an Environmental Management Programme (EMPr).

### PUBLIC PARTICIPATION PROCESS

The sharing of information forms the basis of the public participation process and offers you the opportunity to become actively involved in the EIA Process from the outset. Comments and inputs from Interested and Affected Parties (I&APs) during the Scoping and the EIA Phases are encouraged in order to ensure that potential impacts are considered within the ambit of the study. The public participation process aims to ensure that:

- » Information that contains all the relevant facts in respect of the application is made available to I&APs for review.
- » I&AP participation is facilitated in such a manner that they are provided with a reasonable opportunity to comment on the proposed project.
- » Adequate review periods are provided for I&APs to comment on the findings of the Scoping and EIA Reports.

In order to ensure effective participation, the public participation process includes the following:

- » Distribution of this Background Information Document.
- » Identification of potential I&APs.
- » Placement of site notices at the affected property.
- » Placement of advertisements in local newspapers.
- » Compilation of an I&AP database which is updated throughout the EIA Process and includes the details of:
  - all persons who submitted written comments or attended meetings during the public participation process
  - all persons who requested to be registered on the database in writing
  - all organs of state which hold jurisdiction in respect of the activity to which the application relates
- » All registered I&APs are notified of the progress in the EIA process through stakeholder consultation via notification letters, telephone calls and consultation meetings.
- » Release of the Scoping and EIA Reports for 30-day review periods
- » Holding meetings with I&APs to further facilitate the public participation process.

### YOUR RESPONSIBILITIES AS AN I&AP

In terms of the EIA Regulations, your attention is drawn to your responsibilities as an I&AP:

- » In order to participate in this EIA process, you must register yourself on the project database.
- » You must ensure that any comments regarding the proposed project are submitted within the stipulated timeframes.
- » You are required to disclose any direct business, financial, personal or other interest which that you may have in the approval or refusal of the application for the Cluster.

### HOW TO BECOME INVOLVED

1. By responding by phone, fax or e-mail to the invitation for your involvement which has been advertised in newspapers.
2. By returning the reply form to the relevant contact person.
3. By attending the meetings to be held during the course of the process. As a registered I&AP you will automatically be invited to attend these meetings. Dates for public meetings will also be advertised in local newspapers.
4. By contacting the consultants with queries or comments.
5. By reviewing and commenting on the draft Scoping and EIA Reports within the stipulated 30-day review periods.

If you consider yourself an I&AP for this project, we urge you to make use of the opportunities created by the public participation process to provide comment, raise issues and concerns which affect and/or interest you or request further information. Your input into this process forms a key element of the EIA process.

By completing and submitting the accompanying reply form, you automatically register yourself as an I&AP for this project, and are ensured that your comments, concerns or queries raised regarding the project will be noted.

### COMMENTS AND QUERIES

Direct all comments, queries or responses to:

Gabriele Wood of Savannah Environmental  
PO Box 148, Sunninghill, Johannesburg, 2157

Phone: 011 656 3237

Fax: 086 684 0547

E-mail: [gabriele@savannahsa.com](mailto:gabriele@savannahsa.com)

To view project documentation, visit  
[www.savannahSA.com](http://www.savannahSA.com)



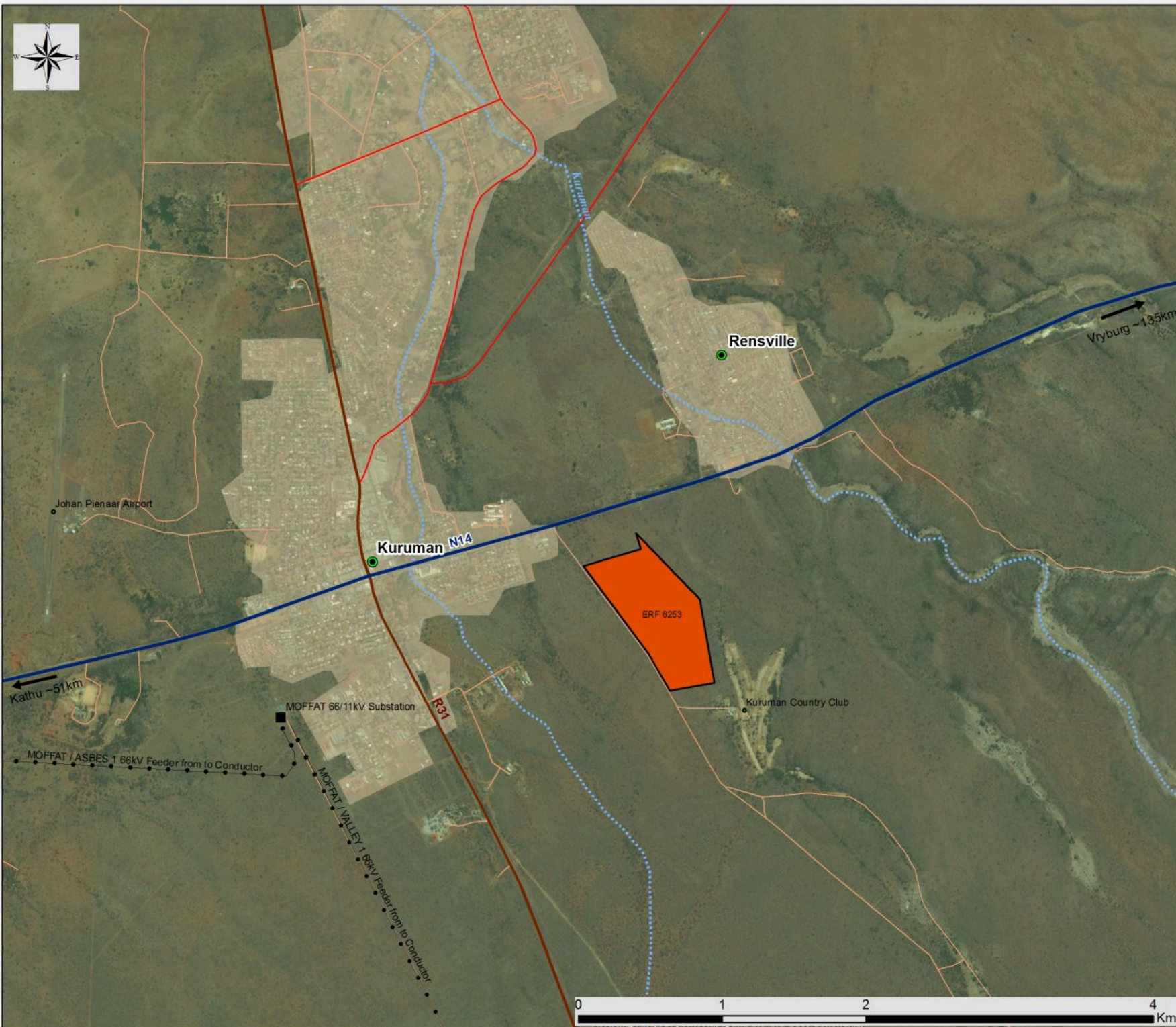


# Metals Industrial Cluster near Kuruman, Northern Cape Province

Locality Map

## Legend

- Eskom substation
- Town
- Eskom power line
- National road
- Regional road
- Main road
- Secondary road
- Non-perennial river
- Urban Built-up
- Project Site (ERF 6253)



Scale: 1:25 000  
Projection: LQ23  
Map Ref.: Kuruman - Locality map - 16.10.15





MAART 2016

OMGEWINGSIMPAKEVALUERINGSPROSES

OPRIGTING VAN DIE BEOOGDE  
METAALNYWERHEIDSKORF EN  
GEPAARDGAANDE INFRASTRUKTUUR

NABY KURUMAN  
NOORD-KAAPPROVINSIE

AGTERGRONDINLICHTINGS  
DOKUMENT



**Economic Development & Tourism**

Department:  
Economic Development & Tourism  
NORTHERN CAPE PROVINCE



Die Noord-Kaapse Departement van Ekonomiese Ontwikkeling en Toerisme beoog die oprigting van 'n Metaalnywerheidskorf (hierna "die Korf" genoem) op Erf 6253 (Gedeelte van Erf 1), ~2 km suidoos van die dorp Kuruman. Die beoogde terrein is in die regsgebied van die Ga-Segonyana Plaaslike Munisipaliteit en die John Taola Gaetsewe Distriksmunisipaliteit en omstreke in die Noord-Kaapprovinsie geleë. Die Korf word beplan as 'n industriële park wat op die vervaardiging van staal en metale geskoei sal wees met ruimte vir ander verwante nywerhede om ook in die Korf geleë te wees en van daar sake te doen.

Die Korf sal na verwagting soos volg deur vier fases ontwikkel en vergroot word: (i) Fase 1, wat as korttermyn geag word; (ii) Fase 2, wat as mediumtermyn geag word; (iii) Fase 3, wat as langtermyn geag word; en (iv) Fase 4, wat in die vooruitsig gestel word vir die vergroting van die Korf, welke beplanning in drie fases en oor 'n tydsraamwerk van langer as 20 jaar strek.

Die oprigting van die Metaalnywerheidskorf maak deel uit van die veldtog vir nywerheids- en ekonomiese ontwikkeling en groei in die Noord-Kaapprovinsie.

### DOEL VAN HIERDIE AGTERGRONDI NLI GTINGS DOKUMENT

Hierdie dokument poog om u, as 'n belangstellende en/of geaffekteerde party (B&GP), te voorsien van:

- » 'n oorsig van die beoogde Metaalnywerheidskorf;
- » 'n oorsig van die OIE-proses (wat 'n Bestekopname- en 'n OIE-fase insluit) en die spesialisstudies wat onderneem word ten einde die potensiele impakte, positief sowel as negatief, betreffende die beoogde ontwikkeling te evalueer; en
- » besonderhede van hoe u by die OIE-proses betrokke kan raak, inligting kan ontvang of vraagstukke kan opper wat u dalk kan raak en/of wat vir u van belang kan wees.

### OORSIG VAN DIE BEOOGDE PROJEK

Die beoogde terrein, Erf 6253 (Gedeelte van Erf 1), waarvan die omvang 47 ha is, is deur die ontwikkelaar geïdentifiseer as 'n geskikte terrein wat as 'n Metaalnywerheidskorf ontwikkel kan word.

Vir die ontwikkeling om suksesvol te wees en te floreer, nie net as 'n nywerheidskorf nie, maar as 'n suksesvolle sakeonderneming, moet daar genoeg ruimte wees waarop die ontwikkeling opgerig en vanaf bedryf kan word. Die Metaalnywerheidskorf se ontwikkelingsvoetspoor sal 'n gebied van 47 ha beslaan, met die gevolg dat die hele geaffekteerde eiendom ontwikkel sal word.

Die eiendom wat vir die ontwikkeling beoog word, behoort aan die Ga-Segonyana Plaaslike Munisipaliteit, wat die plaaslike munisipaliteit vir die gebied is waar die terrein geleë is. Toegang tot die terrein kan via die nasionale pad (N14) verkry word, wat sowat 300 m noord van die terrein verbyloop, en 'n naamlose sekondêre pad wat by die N14 aansluit en oor die westelike grens van die terrein loop.

Die Korf sal grotendeels uit Klein, Medium en Mikro-ondernemings (KMMO) en Klein- en Mediumonderneming (KMO) maatskappye bestaan met 'n groeiende aantal groter firmas wat met verloop van tyd verwag word. Die Korf sal deur 'n Korfbestuursmaatskappy (KBM) gedryf word, wat aanvanklik deur die Noord-Kaapse Departement van Ekonomiese Ontwikkeling en Toerisme befonds sal word. Aansporings sal aan die Korflededemas (KLF's) gebied word en sal gedeelde infrastruktuur, geriewe en dienste, sowel as toegang tot befonding, insluit. Gedeelde infrastruktuur sal 'n gemeenskaplike grensheining, sekerheidskontrolepunt, nutsaansluitpunte en padinfrastruktuur in die Korf insluit.

Die Korf sal basiese infrastruktuur insluit wat vir die bedryf van die ontwikkeling benodig word. Die basiese infrastruktuur wat opgerig moet word, sluit in:

- » geboue (pakhuis, administratiewe geboue, vaardighedsontwikkelingsentrum, ens.);
- » landskapargitektuur;
- » parkering;
- » 'n omheining;
- » aansluitingsinfrastruktuur;
- » grootmaatsdienste;
- » nutsdienste; en
- » sekerheid.

Enige entiteit of maatskappy (KLF) wat beplan om in die Metaalnywerheidskorf geleë te wees, sal voorsiening moet maak vir die spesifieke infrastruktuur wat vir die bedryf van die spesifieke entiteit benodig sal word en dit sal van hulle vereis om vir hul eie permitte en magtigings kragtens die wetlike vereistes aansoek te doen.

### OMGEWINGSIMPAAKEVALUERINGS PROSES

Ingevolge die OIE-regulasies wat kragtens Artikel 24(5) van die Nasionale Wet op Omgewingsbestuur (NEMA, Wet 107 van 1998) gepubliseer is, sal die Metaalnywerheidskorf magtiging van die Noord-Kaapse Departement van Omgewingsake en Natuurbewaring (DENC) benodig vir die oprigting en bedryf van die Korf. Ingevolge Artikel 24(5) van NEMA en die 2014 OIE-regulasies, moet 'n Bestekopname- en 'n OIE-proses vir die beoogde projek onderneem word. 'n OIE is 'n doeltreffende beplanning- en besluitnemingswerktuig. Dit bring mee dat die potensiele omgewingsverwante gevolge wat voortspruit uit 'n beoogde aktiwiteit geïdentifiseer en na behore bestuur word tydens die oprigting en bedryf daarvan. Dit bied die applikant die geleentheid om vooraf gewaarsku te wees teen potensiele omgewingskwessies en bied die geleentheid om die kwessie(s) waarvoor verslag gedoen is in die OIE-verslag, asook uit dialoog met B&GP's, op te los.

Die Noord-Kaapse Departement van Ekonomiese Ontwikkeling en Toerisme het Savannah Environmental aangestel as die onafhanklike omgewingskonsultant om die nodige Bestekopname- en OIE-proses te onderneem. Ten einde magtiging te verkry, moet omvattende, onafhanklike omgewingstudies ingevolge die OIE-regulasies onderneem word. Terreinspesifieke studies sal onderneem word om die gelokaliseerde impak van die beoogde ontwikkeling te identifiseer en te evalueer, met inagneming van die oprigting van basiese infrastruktuur en veral met betrekking tot die uitkap van plantegroei, ten einde sensitiewe gebiede in Erf 6253 (Gedeelte van Erf 1) af te baken. Sodra die beperkende omgewingsfaktore bepaal is, kan 'n algemene uitleg wat geskikte sonering vir die Metaalnywerheidskorf aandui, gefinaliseer word. Gepaste versagtings- en bestuursmaatreëls sal in 'n Omgewingsbestuursprogram (OBPr) aanbeveel word. As deel van hierdie omgewingstudies sal B&GP's aktief betrokke raak deur die openbare deelnameproses.

### WAT IS DIE POTENSIËLE OMGEWINGSIMPAAKE WAT MET DIE BEOOGDE PROJEK GEPAARD GAAN?

Potensiele omgewingsimpakte wat gepaard gaan met die oprigting van die basiese infrastruktuur sal deur spesialiste aan die hand van die volgende studies geëvalueer word:

Ekologie-, flora- en fauna-evaluering - om die potensiele impak van die konstruksie en die gevolglike versteuring van plantegroei op die terrein se ekologie en biodiversiteit te bepaal.

Erfenisimpakevaluering - om die potensiele versteuring of vernietiging van erfenisterreine tydens die konstruksiefase weens opgrawingsbedrywighede te bepaal.



Maatskaplike impakevaluering - om die positiewe sosio-ekonomiese geleenthede sowel as die negatiewe sosio-ekonomiese impakte te bepaal wat met die ontwikkeling van die Korf gepaard kan gaan.

Die OIE-proses sal in twee duidelike fases verdeel word:

**Bestekopnamefase Studie** - 'n Kantoorgebonde (desktop) studie, waartydens potensieële kwessies wat met die beoogde Metaalwywerheidskorf gepaard gaan, geïdentifiseer en daardie vraagstukke wat verdere ondersoek deur die OIE-fase sal verg, uitgelig sal word.

**OIE-fase Evaluering** - 'n Gedetailleerde studie van die potensieel wesenlike impakte wat tydens die Bestekopnamefase geïdentifiseer is. Spesialisstudies sal onderneem word ten einde die aard en omvang van die potensieel impakte wat gepaard gaan met die ontwikkeling van die basiese infrastruktuur te bepaal. Hierdie spesialisstudies sal toegelig word deur bestaande inligting, veldwaarnemings en insette wat uit die openbare deelnameproses voortspuit. Praktiese en uitvoerbare versagtingsmaatreëls sal aanbeveel word ten einde potensieel wesenlike impakte wat geïdentifiseer is, te verminder. Hierdie aanbevelings sal in 'n Omgewingsbestuursprogram (OBPr) vervat word.

### OPENBARE DEELNAMEPROSES

Die deel van inligting vorm die grondslag van die openbare deelnameproses en bied u die geleentheid om uit die staanspoor aktief by die OIE-proses betrokke te raak. Kommentaar en insette van Belangstellende en Geaffekteerde Partye (B&GP's) tydens die Bestekopname- en OIE-fase word aangemoedig ten einde te verseker dat oorweging aan potensieel impakte in die omvang van die studie geskenk word. Die openbare deelnameproses pook om te verseker dat:

- » inligting wat al die tersaaklike feite met betrekking tot die aansoek bevat, aan B&GP's beskikbaar gestel word vir oorsig;
- » deelname deur B&GP's op so 'n wyse gefasiliteer word dat hulle 'n redelike geleentheid kry om kommentaar te lewer oor die beoogde projek; en
- » voldoende oorsigtydperke aan B&GP's gebied word om kommentaar te lewer oor die bevindings van die Bestekopname- en OIE-verslag.

Ten einde doeltreffende deelname te verseker, sluit die openbare deelnameproses die volgende in:

- » Die verspreiding van hierdie Agtergrondinligtingsdokument.
- » Die identifisering van potensieel B&GP's.
- » Die aanbring van terreinkennisgewings by die geaffekteerde eiendom.
- » Die plasing van advertensies in plaaslike koerante.
- » Die samestelling van 'n B&GP databasis wat regdeur die OIE-proses bygewerk sal word en besonderhede sal insluit van:
  - almal wat tydens die openbare deelnameproses skriftelike kommentaar ingedien is ingedien by vergaderings bygewoon het;
  - almal wat skriftelik versoek het om op die databasis geregistreer te word; en
  - alle staatsinstansies wat oor jurisdiksie beskik ten opsigte van die aktiwiteit waarop die aansoek betrekking het.
- » Alle geregistreerde B&GP's word van die vordering met die OIE-proses in kennis gestel deur konsultasie met belanghebbende aan die hand van skrywes, telefoonoproep en konsultasievergaderings.
- » Die vrystelling van die Bestekopname- en OIE-verslag vir 30-dae oorsigtydperke.
- » Die hou van vergaderings met B&GP's ten einde die openbare deelnameproses verder te fasiliteer.

### U VERANTWOORDELIKHEDE AS 'N B&GP

Kragtens die OIE-regulasies word u aandag gevestig op u verantwoordelikhede as 'n B&GP:

- » Ten einde aan hierdie OIE-proses deel te neem, moet u uself op die projek se databasis registreer.
- » U moet toesien dat enige kommentaar rakende die beoogde projek binne die gestipuleerde tydsraamwerke ingedien word.
- » U moet enige regstreekse sake-, finansiële-, persoonlike- of ander belang bekendmaak wat u dalk mag hê in die goedkeuring of afkeuring van die aansoek vir die Korf.

### HOE OM BETROKKE TE RAAK

1. Deur telefonies, per faks of per e-pos te reageer op ons uitnodiging vir u betrokkenheid wat in koerante geadverteer is.
2. Deur die antwoordvorm aan die tersaaklike kontakpersoon terug te besorg.
3. Deur die vergaderings by te woon wat gedurende die verloop van die proses gehou sal word. As 'n geregistreerde B&GP sal u outomaties uitgenooi word om hierdie vergaderings by te woon. Datums vir openbare vergaderings sal ook in plaaslike koerante geadverteer word.
4. Deur die konsultante te kontak met navrae of kommentaar.
5. Deur binne die gestipuleerde 30-dae oorsigtydperke oorsig en kommentaar oor die konsep Bestekopname- en OIE-verslag te bied.

Indien u uself as 'n B&GP vir hierdie projek ag, moedig ons u aan om gebruik te maak van die geleentheid wat geskep word deur die openbare deelnameproses om kommentaar te lewer, daardie kwessies en knelpunte te opper wat u raak en/of waarin u belangstel of om meer inligting versoek. U insette in hierdie proses vorm 'n belangrike deel van die OIE-proses.

Deur die meegaande antwoordvorm in te vul en in te dien, registreer u uself outomaties as 'n B&GP vir hierdie projek en verseker u dat kennis geneem word van die kommentaar, knelpunte of navrae wat u betreffende die projek opper.

### KOMMENTAAR EN NAVRAE

Rig alle kommentaar, navrae of antwoorde aan:

Gabriele Wood van Savannah Environmental

Posbus 148, Sunninghill, Johannesburg, 2157

Telefoon: 011 656 3237

Faks: 086 684 0547

E-pos: [gabriele@savannahsa.com](mailto:gabriele@savannahsa.com)

Vir dokumentasie wat met die projek gepaardgaan, besoek

[www.savannahSA.com](http://www.savannahSA.com)



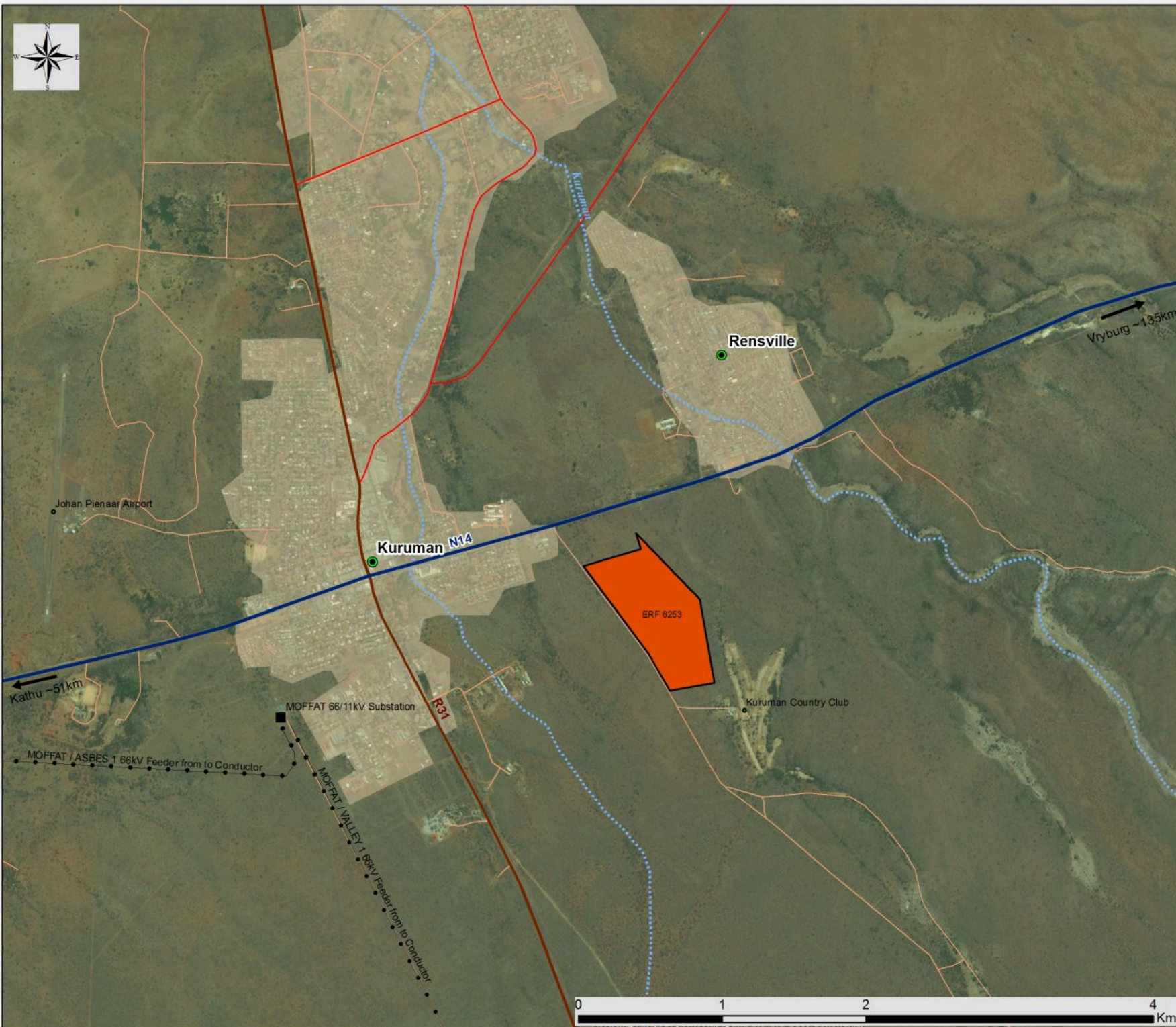


# Metals Industrial Cluster near Kuruman, Northern Cape Province

Locality Map

## Legend

- Eskom substation
- Town
- ⋯ Eskom power line
- National road
- Regional road
- Main road
- Secondary road
- ⋯ Non-perennial river
- Urban Built-up
- Project Site (ERF 6253)



Scale: 1:25 000  
Projection: LQ23  
Map Ref.: Kuruman - Locality map - 16.10.15





**ENVIRONMENTAL IMPACT ASSESSMENT PROCESS**  
**CONSTRUCTION OF THE PROPOSED METALS INDUSTRIAL CLUSTER AND ASSOCIATED**  
**INFRASTRUCTURE, NEAR KURUMAN, NORTHERN CAPE PROVINCE**  
**PUBLIC INVOLVEMENT PROCESS REGISTRATION FORM AND REPLY FORM**

Return completed reply form to: **Gabriele Wood** of **Savannah Environmental (Pty) Ltd**

Fax: 086 699 5796

Phone: 011 656 3237

E-mail: gabriele@savannahsa.com

Postal Address: P O Box 148 Sunninghill 2157

**Please provide your complete contact details:**

Name & Surname:			
Organisation & Designation:			
Postal Address:			
Telephone:		Cellphone:	
Fax:		E-mail:	

**Would you like to register as an interested and affected party (I&AP)?** YES

(please tick the relevant box)

NO

Note: Please register as an I&AP to receive further correspondence regarding the EIA process for the project. Once registered on the project database, your contact details MAY be included in public documentation.

**Please state your interest in the project** (add additional pages if necessary):

**Please list your questions, views or concerns regarding the project** (add additional pages if necessary):

**Please provide contact details of other persons who you regard as a potential interested or affected party:**

Name & Surname:			
Organisation & Designation:			
Postal Address:			
Telephone:		Cellphone:	
Fax:		E-mail:	



(Sien keersy vir Afrikaans)

**OMGEWINGSIMPAKEVALUERINGSPROSES**  
**OPRIGTING VAN DIE BEOOGDE METAALNYWERHEIDSKORF EN GEPAARDGAANDE**  
**INFRASTRUKTUUR, NARBY KURUMAN, NOORD-KAAPPROVINSIE**  
**OPENBARE DEELNAMEPROSES REGISTRASIE/KOMMENTAAR VORM**

Stuur voltooide registrasie/kommentaar vorm aan: **Gabriele Wood** van **Savannah Environmental (Edms.) Bpk**

Faks: 086 699 5796

Telefoon: 011 656 3237

E-pos: gabriele@savannahsa.com

Posadres: **Posbus 148 Sunninghill 2157**

**Verskaf asseblief u persoonlike kontak besonderhede:**

Naam & Van:			
Organisasie & Rol:			
Posadres:			
Telefoon:	Selfoon:		
Faks:	Vonkpos:		

**Stel u belang om te registreer as 'n belangstellende en/of geaffekteerde party (B&GP)?** (Merk met X) JA   
NEE

Nota: Dit word van u vereis om te registreer as 'n B&GP om alle toekomstige inligting in verband met die Omgewingsimpakevalueringproses te ontvang.

**Verduidelik u belangstelling in hierdie projek** (gebruik addisionele bladsye indien nodig):

**Lys u vrae, opinies of besorghede in verband met hierdie projek** (gebruik addisionele bladsye indien nodig):

**Verskaf bykommende kontak besonderhede van addisionele persoon/e wie u beskou as potensiële belangstellende en/of geaffekteerde partye:**

Naam & Van:			
Organisasie & Rol:			
Posadres:			
Telefoon:	Selfoon:		
Faks:	E-pos:		



(Sien omkeer bladsy vir Engels)