

APPENDIX C2:

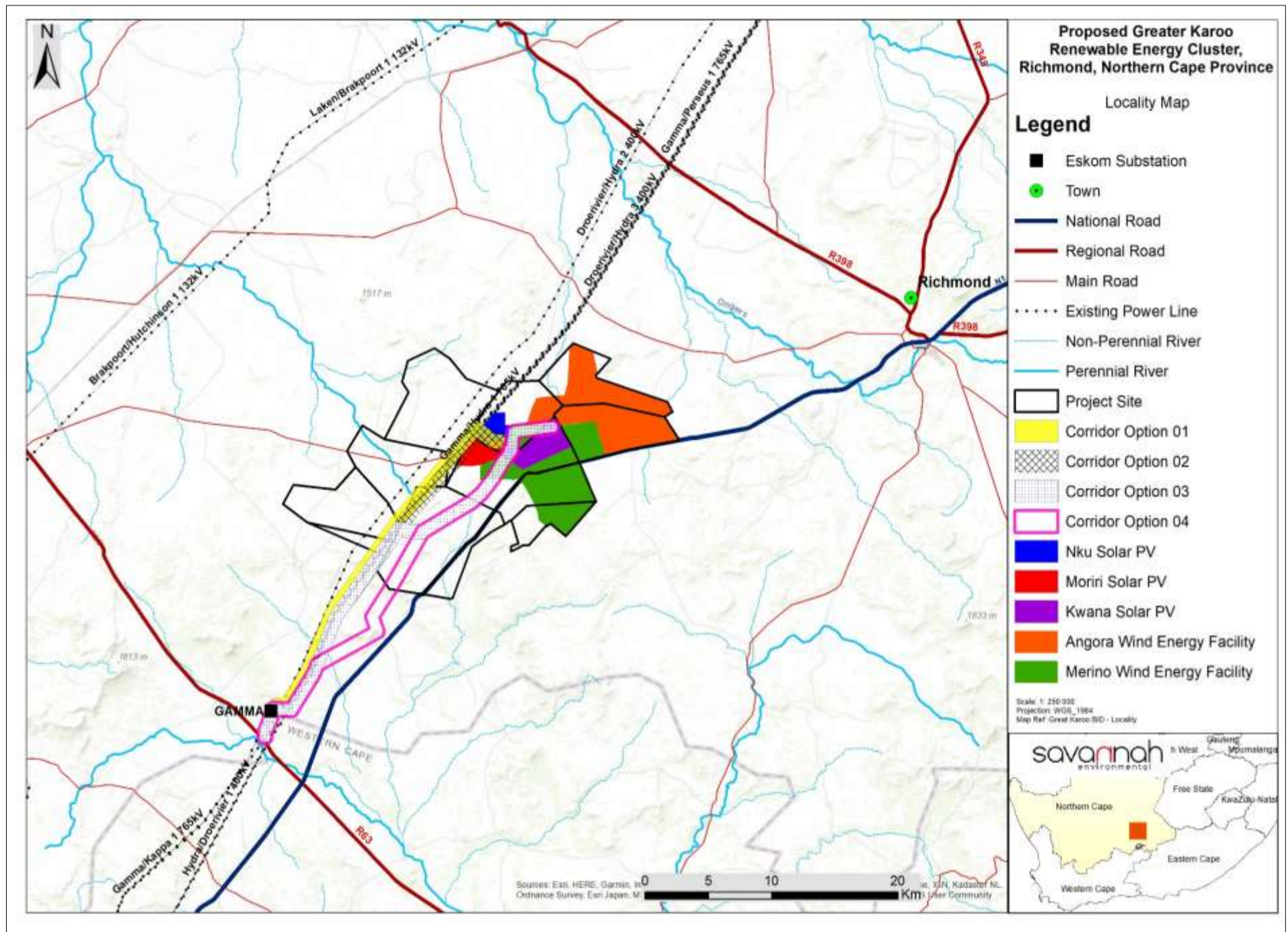
Site Notice and Newspaper Advertisement

Site Notices

NOTICE OF ENVIRONMENTAL IMPACT ASSESSMENT, BASIC ASSESSMENT AND PUBLIC PARTICIPATION PROCESSES FOR THE PROPOSED DEVELOPMENT OF THE GREAT KAROO CLUSTER OF RENEWABLE ENERGY FACILITIES AND GRID CONNECTION INFRASTRUCTURE, NEAR RICHMOND, NORTHERN CAPE PROVINCE

Applicant: Great Karoo Renewable Energy (Pty) Ltd.

Proposed Activity: Great Karoo Renewable Energy (Pty) Ltd proposes the development of a cluster of renewable energy facilities and associated infrastructure, including Electrical Grid Infrastructure (EGI), ~35km South-West of the town of Richmond along the N1 and 80km South-East of Victoria West along the R63 in the Northern Cape Province. The cluster consists of three (3) 100MW solar photovoltaic (PV) energy facilities, and two (2) 140MW energy facilities. The grid connection infrastructure for all projects will include one central collector 132kV substation and a double circuit 132kV power line to the existing Eskom Gamma Substation.



Infrastructure associated with each Solar PV Facility will include:

- » Solar PV array comprising PV modules and mounting structures.
- » Inverters and transformers.
- » Cabling between the panels.
- » 33/132kV onsite facility substation.
- » Cabling from the onsite substation to the collector substation (either underground or overhead).
- » Electrical and auxiliary equipment required at the collector substation that serves that solar energy facility, including switchyard/bay, control building, fences etc.
- » Battery Energy Storage System (BESS).
- » Site offices and maintenance buildings, including workshop areas for maintenance and storage.
- » Laydown areas.
- » Access roads and internal distribution roads.

Infrastructure associated with each Wind Energy Facility will include:

- » Wind turbines
- » Concrete turbine foundations and turbine hardstands.
- » Inverters and transformers.
- » Temporary laydown areas which will accommodate storage and assembly areas.
- » Cabling between the turbines, to be laid underground where practical.
- » A temporary concrete batching plant.
- » 33/132kV onsite facility substation.
- » Underground cabling from the onsite substation to the collector substation.
- » Electrical and auxiliary equipment required at the collector substation that serves that wind energy facility, including switchyard/bay, control building, fences etc.
- » Battery Energy Storage System (BESS).
- » Access roads and internal distribution roads.
- » Site offices and maintenance buildings, including workshop areas for maintenance and storage.

The grid connection infrastructure for all projects will include:

- » Central collector substation which consists of:
 - 33/132kV collector substation.
 - Associated equipment, infrastructure and buildings.
 - Temporary and permanent laydown areas.
- » Distribution Line:
 - * A double-circuit 132kV distribution line to connect the central collector 132kV substation to the existing Eskom Gamma Substation will be constructed.

The details for the respective projects are as follows:

Project Name	Generating capacity	Farm Name and No.	Portion No.
Nku Solar PV Facility	100MW	Rondavel 85	0 & 1
Moriri Solar PV Facility	100MW	Rondavel 85	0 & 1
Kwana Solar PV Facility	100MW	Rondavel 85	0 & 1
Angora Wind Energy Facility	140MW	Gegundefontein 53	11
		Vogelstruisfontein 84	0
		Rondavel 85	0 & 1
Merino Wind Energy Facility	140MW	Rondavel 85	0 & 1
		Bult & Rietfontein 96	9
		Vogelstruisfontein 84	0

Electrical Grid Infrastructure (EGI)	Capacity	Farm Name and Portion	Infrastructure components
Collector EGI	132kV	<ul style="list-style-type: none"> » Portion 0 of Farm Annex Rondavel 86 » Portion 1 of Farm Annex Rondavel 86 » Portion 1 of Farm Uit Vlucht Fontein 265 » Portion 0 of Farm Wynandsfontein 91 » Portion 1 of Farm Wynandsfontein 91 » Portion 3 of Farm Vlekfontein 90 » Portion 0 of Farm Burgersfontein 92 » Portion 1 of Farm Nieuwe Fontein 89 » Portion 0 of Farm Rondavel 85 » Portion 1 of Farm Rondavel 85 » Portion 0 of Farm Kleinfontein 93 » Portion 8 of Farm Jan Booyens Onder Plaats 94 » Portion 1 of Farm Bult & Rietfontein 96 » Remaining extent of Farm 3 	<ul style="list-style-type: none"> » 132kV collector substation and associated 132kV power line

Applications for Environmental Authorisation: Each renewable energy facility will be constructed as a separate stand-alone project and therefore, separate Scoping and Environmental Impact Assessment (S&EIA) processes will be undertaken for each facility. Similarly, the grid connection solution will be subjected to a separate Basic Assessment (BA) process which will consider feasible alternatives for the power line corridors. Each respective renewable facility project and the grid connection infrastructure require applications for Environmental Authorisation (EA) in terms of the National Environmental Management Act (No. 107 of 1998) (NEMA) and 2014 EIA Regulations (GNR 326), which are required to be supported by S&EIA processes for each renewable energy facility and a BA process for the grid connection infrastructure.

Public Participation Process: Savannah Environmental (Pty) Ltd has been appointed as the environmental consultant responsible for undertaking the respective S&EIA, BA and Public Participation processes in support of the applications for EA. Due to the proximity of the renewable energy facilities and grid connection solution to one another, the EIA processes and public participation processes for the projects will be undertaken concurrently, providing the public with an opportunity to understand the full extent of the development proposed and comment on each of the projects. **To obtain further information on the projects and to register on the project databases, please submit your name, contact information and interest in the project, in writing, to:**

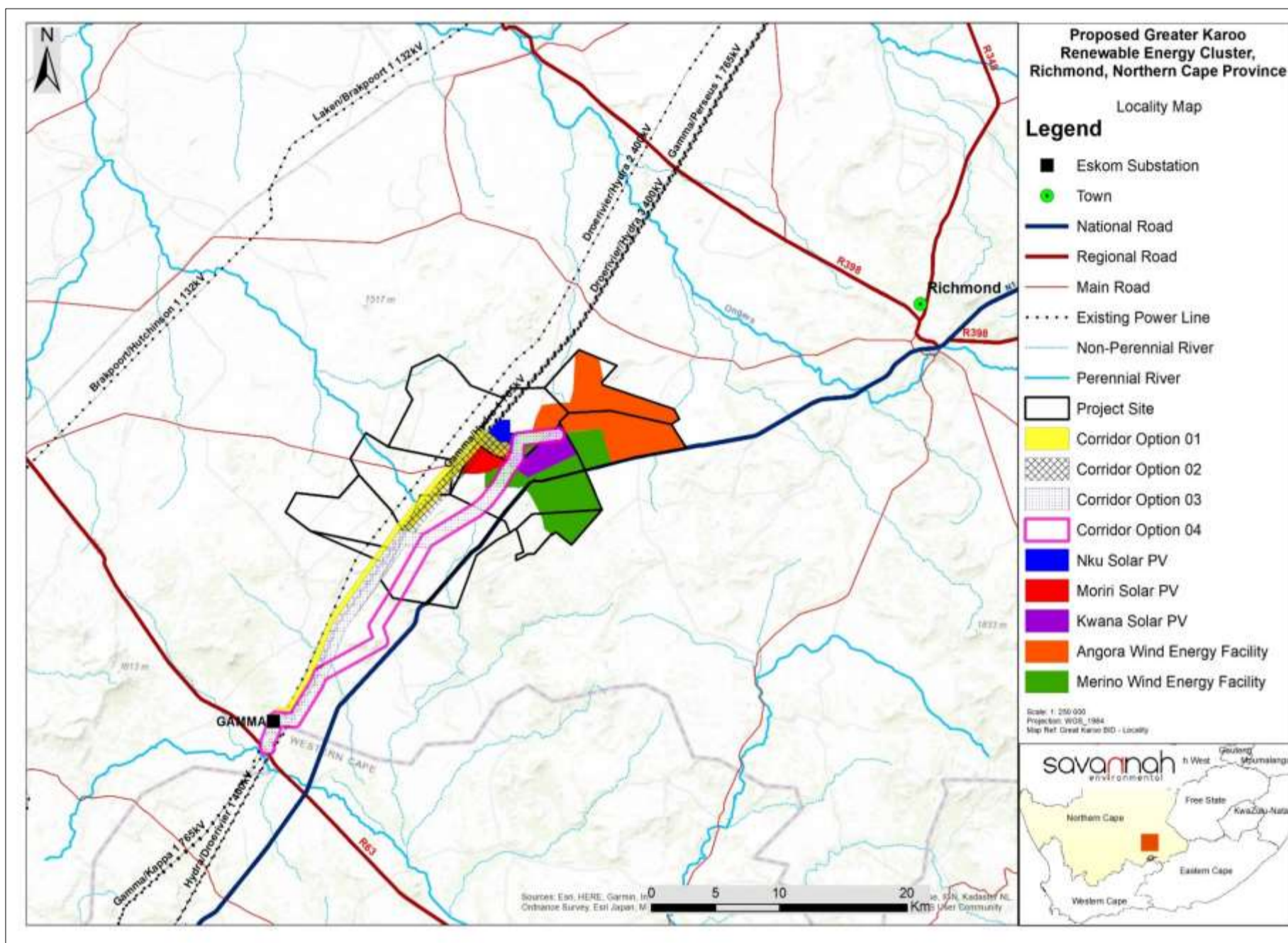
Nicolene Venter at Savannah Environmental
P.O. Box 148, Sunninghill, 2157
Tel: 011 656 3237
Fax: 086 684 0547
Email: publicprocess@savannahsa.com
Website: www.savannahsa.com



KENNISGEWING VAN OMGEWINGSIMPAKEVALUERING, BASIESE EVALUERING EN OPENBARE DEELNAMEPROSESSE VIR DIE BEOOGDE ONTWIKKELING VAN DIE GROOT KAROO GROEP HERNUBARE KRAGANLEGTE EN ROOSTERKONNEKSIE-INFRASTRUKTUUR NABY RICHMOND, NOORD-KAAPROVINSIE

Applikant: Great Karoo Renewable Energy (Edms.) Bpk.

Beoogde aktiwiteit: Great Karoo Renewable Energy (Edms.) Bpk. beoog die ontwikkeling van 'n groep hernubare kragaanlegte en verwante infrastruktuur, met insluiting van Elektriese Kragnetinfrastruktuur (EKI), ~ 35 km suidwes van die dorp Richmond met die N1 langs en 80 km suidoos van Victoria-Wes met die R63 langs in die Noord-Kaaprovinsie. Die groep bestaan uit drie (3) fotovoltaïese (FV) sonkragaanlegte van 100 MW en twee (2) windkragaanlegte van 140 MW. Die roosterkonneksie-infrastruktuur vir al die projekte sal een sentrale kollektorsubstasie van 132 kV en 'n dubbelkring kraglyn van 132 kV tot by Eskom se bestaande Gamma-substasie insluit.



Infrastruktuur wat met elk van die FV-sonkragaanlegte verband hou, sal insluit:

- » FV-sonkragreeks bestaande uit FV-modules en monteerstrukture;
- » wisselrigters en transformators;
- » kables tussen die panele;
- » 33/132 kV interne aanlegsubstasie;
- » kables van die interne substasie af tot by die kollektorsubstasie (hetsy ondergronds of oorhoofs);
- » elektriese en hulptoerusting wat by die kollektorsubstasie benodig word wat daardie sonkragaanleg bedien, met insluiting van 'n skakelwerf/-vak, beheergebou, heidings, ens.
- » 'n batterykragbergingstelsel (BESS);
- » terreinkantore en instandhoudingsgeboue, met insluiting van werkswinkelgebiede vir instandhouding en berging;
- » stapelwerwe; en
- » toegangspaaie en interne distribusiepaaië.

Infrastruktuur wat met elke Windkragaanleg verband hou, sal insluit:

- » windturbines;
- » betonfondasies en vaste blaaië vir turbines;
- » wisselrigters en transformators;
- » tydelike stapelwerwe wat die bergings- en monteergebiede sal huisves;
- » kables tussen die turbines, wat ondergronds gelê moet word waar dit prakties moontlik is;
- » 'n tydelike beton lotaanleg;
- » 33/132 kV interne aanlegsubstasie;
- » ondergrondse kables van die interne substasie af tot by die kollektorsubstasie;
- » elektriese en hulptoerusting wat by die kollektorsubstasie benodig word wat daardie windkragaanleg bedien, met insluiting van 'n skakelwerf/-vak, beheergebou, heidings, ens.
- » 'n batterykragbergingstelsel (BESS);
- » toegangspaaie en interne distribusiepaaië;
- » terreinkantore en instandhoudingsgeboue, met insluiting van werkswinkelgebiede vir instandhouding en berging.

Die roosterkonneksie-infrastruktuur vir alle projekte sal insluit:

- » Sentrale kollektorsubstasie bestaande uit:
 - 33/132 kV kollektorsubstasie;
 - verwante toerusting, infrastruktuur en geboue;
 - tydelike en permanente stapelwerfgebiede;
- » Distribusielyn:
 - * 'n Dubbelkring 132 kV distribusielyn sal opgerig word om die sentrale 132 kV distribusie-substasie met Eskom se bestaande Gamma-substasie te verbind.

Die besonderhede vir die onderskeie projekte is soos volg:

Projeknaam	Opwekkingsvermoë	Plaasnaam en -no.	Gedeelfeno.
Nku FV-sonkragaanleg	100 MW	Rondavel 85	0 & 1
Moriri FV-sonkragaanleg	100 MW	Rondavel 85	0 & 1
Kwana FV-sonkragaanleg	100 MW	Rondavel 85	0 & 1
Angora Windkragaanleg	140 MW	Gegundefontein 53	11
		Vogelstruisfontein 84	0
		Rondavel 85	0 & 1
Merino Windkragaanleg	140 MW	Rondavel 85	0 & 1
		Bult & Rietfontein 96	9
		Vogelstruisfontein 84	0

Elektriese kragetinfrastruktuur (EKI)	Vermoë	Plaasnaam en -gedeelte	Infrastruktuurkomponente
Kollektor-EKI	132 kV	<ul style="list-style-type: none"> » Gedeelte 0 van die plaas Annex Rondavel 86 » Gedeelte 1 van die plaas Annex Rondavel 86 » Gedeelte 1 van die plaas Uit Vlucht Fontein 265 » Gedeelte 0 van die plaas Wynandsfontein 91 » Gedeelte 1 van die plaas Wynandsfontein 91 » Gedeelte 3 van die plaas Vlekfontein 90 » Gedeelte 0 van die plaas Burgersfontein 92 » Gedeelte 1 van die plaas Nieuwe Fontein 89 » Gedeelte 0 van die plaas Rondavel 85 » Gedeelte 1 van die plaas Rondavel 85 » Gedeelte 0 van die plaas Kleinfontein 93 » Gedeelte 8 van die plaas Jan Booyens Onder Plaats 94 » Gedeelte 1 van die plaas Bult & Rietfontein 96 » Restant van Plaas 3 	<ul style="list-style-type: none"> » 132 kV kollektorsubstasie en verwante 132 kV kraglyn

Aansoeke om Omgewingsmagtiging: Elke hernubare kragaanleg sal as 'n aparte losstaande projek opgerig word, gevolglik sal aparte Bestekopname- en Omgewingsimpakevalueringprosesse (B- & OIE-prosesse) vir elke aanleg onderneem word. Eweneens sal die roosterkonneksie-oplossing onderwerp word aan 'n aparte Basiese Evalueringproses (BE-proses), wat oorweging aan bedryfbare alternatiewe vir die kraglynkorridors sal skenk. Elke onderskeie hernubare aanlegprojek en die roosterkonneksie-infrastruktuur vereis aansoeke om Omgewingsmagtiging (OM) ingevolge die Nasionale Wet op Omgewingsbestuur (Wet 107 van 1998) (NEMA) en die 2014 OIE-regulasies (Staatskennisgewing R326), wat deur B&OIE-prosesse vir elke hernubare kragaanleg en 'n BE-proses vir die roosterkonneksie-infrastruktuur ondersteun moet word.

Openbare Deelnameproses: Savannah Environmental (Edms.) Bpk. is aangestel as die omgewingskonsultant wat verantwoordelik is om die onderskeie B&OIE-, BE- en Openbare Deelnameprosesse ter staving van die aansoeke om OM te onderneem. Weens die nabyheid van die hernubare kragaanlegte en die kragnetkonneksie-oplossings aan mekaar, sal die OIE-prosesse en openbare deelnameprosesse vir die projekte gelyklopend onderneem word, wat die publiek 'n geleentheid sal bied om die volle omvang van die beoogde ontwikkelings te verstaan en op elkeen van die projekte kommentaar te lewer. **Om meer inligting te bekom en om op die projekte se databasisse te registreer, verstrek asseblief u naam, kontakbesonderhede en belang by die projek skriftelik aan:**

Nicolene Venter by Savannah Environmental
 Posbus 148, Sunninghill, 2157
 Tel: 011 656 3237
 Faks: 086 684 0547
 E-pos: publicprocess@savannahsa.com
 Webwerf: www.savannahsa.com

savannah
 environmental

PROOF OF SITE NOTICES (Date placed: Wednesday, 29 September 2021)



Process Notices

NOTICE OF ENVIRONMENTAL IMPACT ASSESSMENT, BASIC ASSESSMENT AND PUBLIC PARTICIPATION PROCESSES FOR THE PROPOSED DEVELOPMENT OF THE GREAT KAROO CLUSTER OF RENEWABLE ENERGY FACILITIES AND GRID CONNECTION INFRASTRUCTURE, NEAR RICHMOND, NORTHERN CAPE PROVINCE

Applicant: Great Karoo Renewable Energy (Pty) Ltd.

Proposed Activity: Great Karoo Renewable Energy (Pty) Ltd proposes the development of a cluster of renewable energy facilities and associated infrastructure, including Electrical Grid Infrastructure (EGI), ~35km South-West of the town of Richmond along the N1 and 80km South-East of Victoria West along the R63 in the Northern Cape Province. The cluster consists of three (3) 100MW solar photovoltaic (PV) energy facilities, and two (2) 140MW energy facilities. The grid connection infrastructure for all projects will include one central collector 132kV substation and a double circuit 132kV power line to the existing Eskom Gamma Substation.

Infrastructure associated with each Solar PV Facility will include:

- » Solar PV array comprising PV modules and mounting structures.
- » Inverters and transformers.
- » Cabling between the panels.
- » 33/132kV onsite facility substation.
- » Cabling from the onsite substation to the collector substation (either underground or overhead).
- » Electrical and auxiliary equipment required at the collector substation that serves that solar energy facility, including switchyard/bay, control building, fences etc.
- » Battery Energy Storage System (BESS).
- » Site offices and maintenance buildings, including workshop areas for maintenance and storage.
- » Laydown areas.
- » Access roads and internal distribution roads.

Infrastructure associated with each Wind Energy Facility will include:

- » Wind turbines
- » Concrete turbine foundations and turbine hardstands.
- » Inverters and transformers.
- » Temporary laydown areas which will accommodate storage and assembly areas.
- » Cabling between the turbines, to be laid underground where practical.
- » A temporary concrete batching plant.
- » 33/132kV onsite facility substation.
- » Underground cabling from the onsite substation to the collector substation.
- » Electrical and auxiliary equipment required at the collector substation that serves that wind energy facility, including switchyard/bay, control building, fences etc.
- » Battery Energy Storage System (BESS).
- » Access roads and internal distribution roads.
- » Site offices and maintenance buildings, including workshop areas for maintenance and storage.

The grid connection infrastructure for all projects will include:

- » Central collector substation which consists of:
 - 33/132kV collector substation.
 - Associated equipment, infrastructure and buildings.
 - Temporary and permanent laydown areas.
- » Distribution Line:
 - * A double-circuit 132kV distribution line to connect the central collector 132kV substation to the existing Eskom Gamma Substation will be constructed.

The details for the respective projects are as follows:

Project Name	Generating capacity	Farm Name and No.	Portion No.
Nku Solar PV Facility	100MW	Rondavel 85	0 & 1
Moriri Solar PV Facility	100MW	Rondavel 85	0 & 1
Kwana Solar PV Facility	100MW	Rondavel 85	0 & 1
Angora Wind Energy Facility	140MW	Gegundefontein 53	11
		Vogelstruisfontein 84	0
		Rondavel 85	0 & 1
Merino Wind Energy Facility	140MW	Rondavel 85	0 & 1
		Bult & Rietfontein 96	9
		Vogelstruisfontein 84	0

Electrical Grid Infrastructure (EGI)	Capacity	Farm Name and Portion	Infrastructure components
Collector EGI	132kV	<ul style="list-style-type: none"> » Portion 0 of Farm Annex Rondavel 86 » Portion 1 of Farm Annex Rondavel 86 » Portion 1 of Farm Uit Vlucht Fontein 265 » Portion 0 of Farm Wynandsfontein 91 » Portion 1 of Farm Wynandsfontein 91 » Portion 3 of Farm Vlefontein 90 » Portion 0 of Farm Burgersfontein 92 » Portion 1 of Farm Nieuwe Fontein 89 » Portion 0 of Farm Rondavel 85 » Portion 1 of Farm Rondavel 85 » Portion 0 of Farm Kleinfontein 93 » Portion 8 of Farm Jan Booyens Onder Plaats 94 » Portion 1 of Farm Bult & Rietfontein 96 » Remaining extent of Farm 3 	<ul style="list-style-type: none"> » 132kV collector substation and associated 132kV power line

Applications for Environmental Authorisation: Each renewable energy facility will be constructed as a separate stand-alone project and therefore, separate Scoping and Environmental Impact Assessment (S&EIA) processes will be undertaken for each facility. Similarly, the grid connection solution will be subjected to a separate Basic Assessment (BA) process which will consider feasible alternatives for the power line corridors. Each respective renewable facility project and the grid connection infrastructure require applications for Environmental Authorisation (EA) in terms of the National Environmental Management Act (No. 107 of 1998) (NEMA) and 2014 EIA Regulations (GNR 326), which are required to be supported by S&EIA processes for each renewable energy facility and a BA process for the grid connection infrastructure.

Public Participation Process: Savannah Environmental (Pty) Ltd has been appointed as the environmental consultant responsible for undertaking the respective S&EIA, BA and Public Participation processes in support of the applications for EA. Due to the proximity of the renewable energy facilities and grid connection solution to one another, the EIA processes and public participation processes for the projects will be undertaken concurrently, providing the public with an opportunity to understand the full extent of the development proposed and comment on each of the projects. **To obtain further information on the projects and to register on the project databases, please submit your name, contact information and interest in the project, in writing, to:**

Nicolene Venter at Savannah Environmental
 P.O. Box 148, Sunninghill, 2157
 Email: publicprocess@savannahsa.com
 Tel: 011 656 3237 / Fax: 086 684 0547
 Website: www.savannahsa.com



KENNISGEWING VAN OMGEWINGSIMPAKEVALUERING, BASIESE EVALUERING EN OPENBARE DEELNAMEPROSESSE VIR DIE BEOOGDE ONTWIKKELING VAN DIE GROOT KAROO GROEP HERNUBARE KRAGANLEGTE EN ROOSTERKONNEKSIE-INFRASTRUKTUUR NABY RICHMOND, NOORD-KAAPROVINSIE

Applikant: Great Karoo Renewable Energy (Edms.) Bpk.

Beoogde aktiwiteit: Great Karoo Renewable Energy (Edms.) Bpk. beoog die ontwikkeling van 'n groep hernubare kragaanlegte en verwante infrastruktuur, met insluiting van Elektriese Kragnetinfrastruktuur (EKI), ~ 35 km suidwes van die dorp Richmond met die N1 langs en 80 km suidoos van Victoria-Wes met die R63 langs in die Noord-Kaapprovinsie. Die groep bestaan uit drie (3) fotovoltaïese (FV) sonkragaanlegte van 100 MW en twee (2) windkragaanlegte van 140 MW. Die roosterkonneksie-infrastruktuur vir al die projekte sal een sentrale kollektorsubstasie van 132 kV en 'n dubbelkring kraglyn van 132 kV tot by Eskom se bestaande Gamma-substasie insluit.

Infrastruktuur wat met elk van die FV-sonkragaanlegte verband hou, sal insluit:

- » FV-sonkragreeks bestaande uit FV-modules en monteerstrukture;
- » wisselrigters en transformators;
- » kables tussen die panele;
- » 33/132 kV interne aanlegsubstasie;
- » kables van die interne substasie af tot by die kollektorsubstasie (hetsy ondergronds of oorhoofs);
- » elektriese en hulptoerusting wat by die kollektorsubstasie benodig word wat daardie sonkragaanleg bedien, met insluiting van 'n skakelwerf/-vak, beheergebou, heidings, ens.
- » 'n batterykragbergingstelsel (BESS);
- » terreinkantore en instandhoudingsgeboue, met insluiting van werkswinkelgebiede vir instandhouding en berging;
- » stapelwerwe; en
- » toegangspaaie en interne distrusisepaaie.

Infrastruktuur wat met elke Windkragaanleg verband hou, sal insluit:

- » windturbines;
- » betonfondasies en vaste blaai vir turbines;
- » wisselrigters en transformators;
- » tydelike stapelwerwe wat die bergings- en monteergebiede sal huisves;
- » kables tussen die turbines, wat ondergronds gelê moet word waar dit prakties moontlik is;
- » 'n tydelike beton lotaanleg;
- » 33/132 kV interne aanlegsubstasie;
- » ondergrondse kables van die interne substasie af tot by die kollektorsubstasie;
- » elektriese en hulptoerusting wat by die kollektorsubstasie benodig word wat daardie windkragaanleg bedien, met insluiting van 'n skakelwerf/-vak, beheergebou, heidings, ens.
- » 'n batterykragbergingstelsel (BESS);
- » toegangspaaie en interne distrusisepaaie;
- » terreinkantore en instandhoudingsgeboue, met insluiting van werkswinkelgebiede vir instandhouding en berging.

Die roosterkonneksie-infrastruktuur vir alle projekte sal insluit:

- » Sentrale kollektorsubstasie bestaande uit:
 - 33/132 kV kollektorsubstasie;
 - verwante toerusting, infrastruktuur en geboue;
 - tydelike en permanente stapelwerfgebiede;
- » Distribusielyn:
 - * 'n Dubbelkring 132 kV distrusielyn sal opgerig word om die sentrale 132 kV distrusiesubstasie met Eskom se bestaande Gamma-substasie te verbind.

Die besonderhede vir die onderskeie projekte is soos volg:

Projeknaam	Opwekkingsvermoë	Plaasnaam en -no.	Gedeeltesno.
Nku FV-sonkragaanleg	100 MW	Rondavel 85	0 & 1
Moriri FV-sonkragaanleg	100 MW	Rondavel 85	0 & 1
Kwana FV-sonkragaanleg	100 MW	Rondavel 85	0 & 1
Angora Windkragaanleg	140 MW	Gegundefontein 53 Ptn 11 / Vogelstruisfontein 84 Ptn 0 / Rondavel 85 Ptns 0 & 1	11
Merino Windkragaanleg	140 MW	Rondavel 85 Ptns 0 & 1 / Bult & Rietfontein 96 Ptn 9 / Vogelstruisfontein 84 Ptn 0	0 & 1

Elektriese kragnetinfrastruktuur (EKI)	Vermoë	Plaasnaam en -gedeelte	Infrastruktuurkomponente
Kollektor-EKI	132 kV	<ul style="list-style-type: none"> » Gedeelte 0 van die plaas Annex Rondavel 86 » Gedeelte 1 van die plaas Annex Rondavel 86 » Gedeelte 1 van die plaas Uit Vlucht Fontein 265 » Gedeelte 0 van die plaas Wynandsfontein 91 » Gedeelte 1 van die plaas Wynandsfontein 91 » Gedeelte 3 van die plaas Vlekfontein 90 » Gedeelte 0 van die plaas Burgersfontein 92 » Gedeelte 1 van die plaas Nieuwe Fontein 89 » Gedeelte 0 van die plaas Rondavel 85 » Gedeelte 1 van die plaas Rondavel 85 » Gedeelte 0 van die plaas Kleinfontein 93 » Gedeelte 8 van die plaas Jan Booysens Onder Plaats 94 » Gedeelte 1 van die plaas Bult & Rietfontein 96 » Restant van Plaas 3 	<ul style="list-style-type: none"> » 132 kV kollektorsubstasie en verwante 132 kV kraglyn

Aansoeke om Omgewingsmagtiging: Elke hernubare kragaanleg sal as 'n aparte losstaande projek opgerig word, gevolglik sal aparte Bestekopname- en Omgewingsimpevalueringprosesse (B- & OIE-prosesse) vir elke aanleg onderneem word. Eweneens sal die roosterkonneksie-oplossing onderwerp word aan 'n aparte Basiese Evalueringproses (BE-proses), wat oorweging aan bedryfbare alternatiewe vir die kraglynkorridors sal skenk. Elke onderskeie hernubare aanlegprojek en die roosterkonneksie-infrastruktuur vereis aansoeke om Omgewingsmagtiging (OM) ingevolge die Nasionale Wet op Omgewingsbestuur (Wet 107 van 1998) (NEMA) en die 2014 OIE-regulasies (Staatskennisgewing R326), wat deur B&OIE-prosesse vir elke hernubare kragaanleg en 'n BE-proses vir die roosterkonneksie-infrastruktuur ondersteun moet word.

Openbare Deelnameprosesse: Savannah Environmental (Edms.) Bpk. is aangestel as die omgewingskonsultant wat verantwoordelik is om die onderskeie B&OIE-, BE- en Openbare Deelnameprosesse ter staving van die aansoeke om OM te onderneem. Weens die nabyheid van die hernubare kragaanlegte en die kragnetkonneksie-oplossings aan mekaar, sal die OIE-prosesse en openbare deelnameprosesse vir die projekte gelyklopend onderneem word, wat die publiek 'n geleentheid sal bied om die volle omvang van die beoogde ontwikkelings te verstaan en op elkeen van die projekte kommentaar te lewer. **Om meer inligting te bekom en om op die projekte se databasisse te registreer, verstrek asseblief u naam, kontakbesonderhede en belang by die projek skriftelik aan:**

Nicolene Venter by Savannah Environmental

Posbus 148, Sunninghill, 2157

E-pos: publicprocess@savannahsa.com

Tel: 011 656 3237 / Faks: 086 684 0547

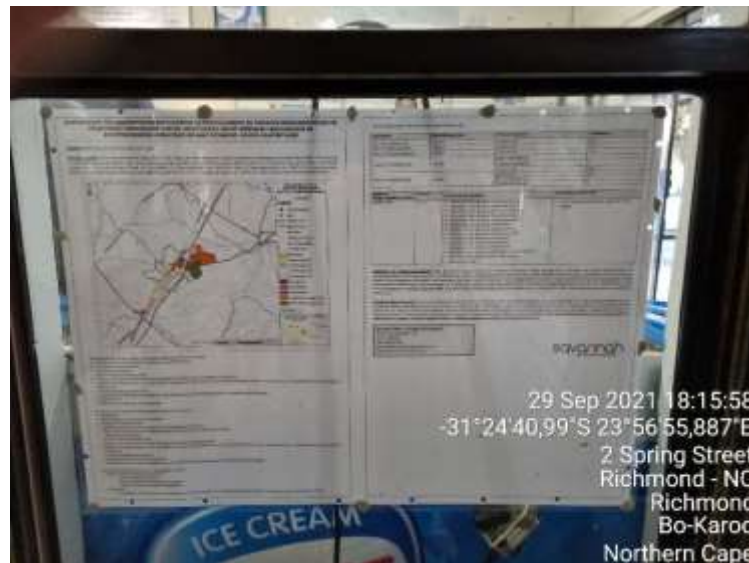
Webwerf: www.savannahsa.com



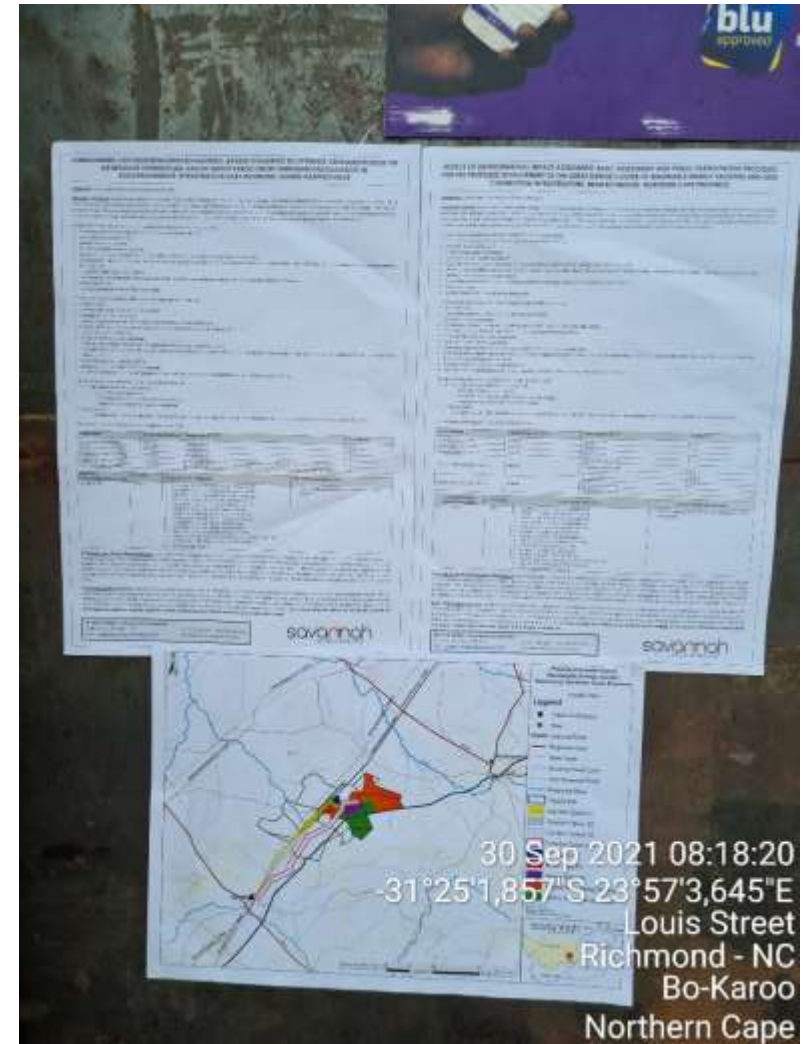
PROOF OF PROCESS NOTICES (Date placed: Wednesday, 29 September 2021 – Richmond)

CALTAX SERVICE STATION





AL-AMIN SUPERMARK



NTSIKELELO TIDA COMMUNITY LIBRARY



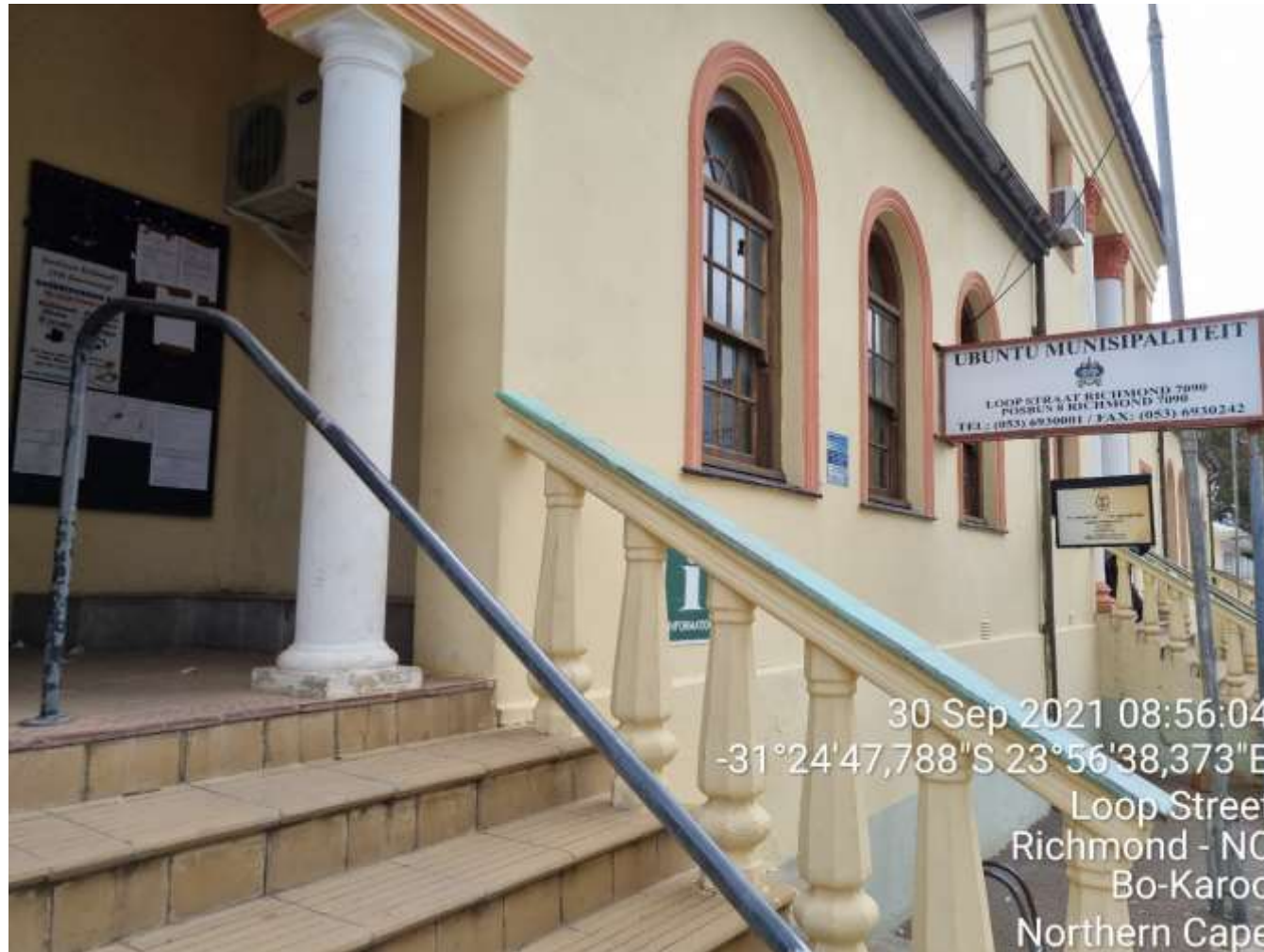
30 Sep 2021 08:31:26
-31°25'3,693"S 23°57'8,468"E
711 Daisy Street
Richmond - NC
Bo-Karoo
Northern Cape



PEP STORE



UBUNTU MUNICIPALITY OFFICES





SPAR – VICTORIA WEST





CLINIC – VICTORIA WEST



30 Sep 2021 12:06:24
-31°24'23,944"S 23°7'1,834"E
16 Voortrekker Street
Victoria West
Bo-Karoo
Northern Cape



Advertisements

NOTICE OF ENVIRONMENTAL IMPACT ASSESSMENT, BASIC ASSESSMENT & PUBLIC PARTICIPATION PROCESSES FOR THE PROPOSED DEVELOPMENT OF THE GREAT KAROO CLUSTER OF RENEWABLE ENERGY FACILITIES & GRID CONNECTION INFRASTRUCTURE, NEAR RICHMOND, NORTHERN CAPE PROVINCE

Applicant: Great Karoo Renewable Energy (Pty) Ltd.

Proposed Activity: Establishment of three (3) Solar Photovoltaic (PV) Energy Facilities, two (2) Wind Energy Facilities & grid connection infrastructure comprising a 132kV central collector substation & a 132kV power line to enable the connection of five (5) renewable energy facilities to the national grid for the evacuation of the generated electricity. The connection point to the national grid will be the existing Eskom Gamma Substation. Infrastructure associated with each project includes:

Solar Energy Facilities	Wind Energy Facilities	Grid Connection Infrastructure
<ul style="list-style-type: none"> » Solar PV array comprising PV modules & mounting structures. » Inverters & transformers. » Cabling between the panels. » 33/132kV onsite facility substation. » Cabling from the onsite substation to the collector substation (either underground or overhead). » Electrical & auxiliary equipment required at the collector substation that serves that solar energy facility, including switchyard/bay, control building, fences, etc. » Battery Energy Storage System (BESS). » Site offices & maintenance buildings, including workshop areas for maintenance & storage. » Laydown areas. » Access roads & internal distribution roads. 	<ul style="list-style-type: none"> » Wind turbines. » Concrete turbine foundations & turbine hardstands. » Inverters & transformers. » Temporary laydown areas which will accommodate storage & assembly areas. » Cabling between the turbines, to be laid underground where practical. » A temporary concrete batching plant. » 33/132kV onsite facility substation. » Underground cabling from the onsite substation to the collector substation. » Electrical & auxiliary equipment required at the collector substation that serves that wind energy facility, including switchyard/bay, control building, fences, etc. » Battery Energy Storage System (BESS). » Access roads & internal distribution roads. » Site offices & maintenance buildings, including workshop areas for maintenance & storage. 	<ul style="list-style-type: none"> » Central collector substation which consists of: <ul style="list-style-type: none"> * 33/132kV collector substation. * Associated equipment, infrastructure, & buildings. * Temporary & permanent laydown areas. » Distribution Line: <ul style="list-style-type: none"> * A double-circuit 132kV distribution line to connect the central collector 132kV substation to the existing Eskom Gamma Substation will be constructed.

Project Location: The five (5) proposed renewable energy facilities, along with their associated grid connection infrastructure, are located approximately 35km South-West of Richmond along the N1 & approximately 80km South-East of Victoria West along the R63 in the Northern Cape Province, within the Ubuntu Local Municipality, & the Pixley Ka Seme District Municipality. A portion (approximately 2km) of the 132kV power line that will connect the 132kV central collector substation to the Eskom Gamma Substation falls within the Beaufort West Local Municipality which forms part of the greater Cape Winelands District Municipality in the Western Cape Province.

Solar Energy Facilities 100MW		Wind Energy Facilities 140MW	
Project	Property	Project	Properties
Nku Solar PV Facility	» Farm Rondavel 85 (Portion 0 & 1)	Angora Wind Energy Facility	» Portion 11 of Farm Gegundefontein 53
Moriri Solar PV Facility			» Portion 0 of Farm Vogelstruisfontein 84
Kwana Solar PV Facility		Merino Wind Energy Facility	» Portion 1 of Farm Rondavel 85
			» Portion 0 of Farm Rondavel 85
			» Portion 9 of Farm Bult & Rietfontein 96

Savannah Environmental website: <https://savannahsa.com/public-documents/energy-generation/the-great-karoo-cluster-of-renewable-energy-facilities/>

Collector Electrical Grid Infrastructure (EGI)		
Project	Properties	
Collector EGI (132kV)	<ul style="list-style-type: none"> » Portion 0 of Farm Annex Rondavel 86 » Portion 1 of Farm Annex Rondavel 86 » Portion 1 of Farm Uit Vlugt Fontein 265 » Portion 0 of Farm Wynandsfontein 91 » Portion 1 of Farm Wynandsfontein 91 » Portion 3 of Farm Vlekfontein 90 » Portion 0 of Farm Burgersfontein 92 	<ul style="list-style-type: none"> » Portion 1 of Farm Nieuwe Fontein 89 » Portion 0 of Farm Rondavel 85 » Portion 1 of Farm Rondavel 85 » Portion 0 of Farm Kleinfontein 93 » Portion 8 of Farm Jan Booyens Onder Plaats 94 » Portion 1 of Farm Bult & Rietfontein 96 » Remaining extent of Farm 3

Savannah Environmental website: <https://savannahsa.com/public-documents/grid-infrastructure/the-great-karoo-cluster-grid-connection-infrastructure/>

Scoping & Environmental Impact Assessment (S&EIA) & Basic Assessment (BA) Processes: In terms of Sections 24 & 24D of the National Environmental Management Act (No 107 of 1998), as read with Government Notice R324 – R327, as amended, a S&EIA process is required for each renewable energy facility. Similarly, a BA process is required for the grid connection infrastructure. Savannah Environmental is undertaking the required S&EIA, BA, & public participation processes for these projects.

Scoping Reports & BA Report available for review & comment: The Scoping & Reports for each of the renewable energy facilities are available for download, review, & comment on the Savannah Environmental website (see applicable link in table above). The 30-day review & comment period of the Scoping Reports is from **Friday, 12 November 2021** until **Monday, 13 December 2021**. The availability of the BA Report for the grid connection infrastructure for a 30-day review and comment period will be communicated in due course.

Information Session: Interested and affected parties (I&APs) are invited to attend the Information Session (poster display) which will take place at the Richmond Show Grounds on **Thursday, 2 December 2021** at **14:00**. The Information Session will take place in compliance with COVID-19 protocols, and attendees are limited to 12 persons at a time in the Hall. Please contact Nicolene Venter or Tumelo Mathulwe (details below) to register your attendance.

To obtain further information & register on the project database, please submit your name, contact information & interest in the project to the contact person below.

Nicolene Venter or Tumelo Mathulwe at Savannah Environmental
 P.O. Box 148, Sunninghill, 2157
 Tel: 011 656 3237
 Fax: 086 684 0547
 Mobile: 060 978 8396 (including please call me)
 Email: publicprocess@savannahsa.com
 Website: www.savannahsa.com



AGS Saamstaan Kontrei winkel

weereens 'n sukses

DE AAR – Die afgelope Saterdag, 6 November het die AGS kerk in Du Toitstraat hulle tweede Saamstaan Kontrei Winkel aangebied.

Reeds vroegoggend het die vure hoog gebrand om die wors en sosaties gereed te kry vir die besoekers. Uitstallers het hulle produkte gereed gekry en besoekers het opgedaag om die oggend in die ope lug te geniet. Hierdie keer is daar ook 'n kinderwedstryd aangebied en daar is in verskillende ouderdomsgroepe meeding. Die wenner was as volg: Baba katagorie - Twinkle Star: Eerste: Liame en tweede Juan-Rie. 1 - 2 Jaar - Busy Bee: Eerste: Payton, tweede: Arabellah en derde Anna-Mae. 3 - 4 Jaar - Full of Joy: Eerste: Elin-Rie en tweede Cloé. Baie geluk aan hierdie kleuters.

Daar was 'n groot getal uitstallers en beslis iets vir een en almal se smaak. Heerlike basaarpoeding, worsrolle, sosaties, tuisgebak, lekkergoed, koeldrank, diereprodukte, vetplante, handgemaakte items en vele meer. Daar was ook gesigverf, donkiekarritte en 'n springkasteel vir die kleinspan. Besoekers het beslis heerlik saam gekuier onder die koelte bome.

Hierdie was weereens 'n suksesvolle kontrei winkel en die organiseerders is dankbaar teenoor elke borg en besoeker wat die dag moontlik gemaak het. Daar word reeds 'n volgende Kontrei winkel vir Februarie 2022 beplan. Daar word ook 'n veiling beplan en indien u enige goedere het wat u wil laat opveel of selfs wil uitstal is u welkom om vir Antonette Bisset by 074 579 7658 te skakel vir verdere inligting.



Daar is weereens heerlik saamgekuier by die AGS Kerk se Saamstaan Kontrei winkel.



Die wenner van die Baba Katagorie - Twinkle Star - Liamé.



Die wenner van die 1-2 jaar Katagorie - Busy Bee - Payton.



Tweede Plek van ons Baba Katagorie - Twinkle Star - Juan-Rie



Tweede Plek van ons 1-2 jaar Katagorie - Busy Bee - Arabellah



Die grootmense het ook nie terug gestaan nie en deel uitgemaak van die pret.

Taxpayers reminded to file returns ahead of deadline

THE South African Revenue Service (SARS) has urged individual non-provisional taxpayers to file their income tax returns on or before the deadline of 23 November 2021.

In a statement, the revenue collector warned that penalties would be levied on taxpayers who fail to submit their income tax returns by this deadline. "Taxpayers must note that according to changes in legislation, SARS will levy penalties from 1 December 2021 where one of more returns are outstanding. "Before the change in the legislation, SARS could only levy penalties where two or more returns were outstanding. This older rule will remain in place for one more year for 2020 and earlier returns," said the revenue service in a statement. SARS Commissioner Edward Kieswetter said the filing of a tax return is a legal obligation for those taxpayers who are required to file and contributes towards a culture of voluntary compliance. "But beyond the legal requirement to file a return, taxpayers who do the right thing are enabling government to meet the basic service needs of the poor and vulnerable by providing social grants and health care, amongst others," he said.

He said SARS had put in place a number of upgraded digital channels that are available 24/7. "This will help provide clarity and make it easy for taxpayers to meet the deadline of 23 November without any difficulty. These channels include amongst others, SARS eFiling, SARS MobiApp and an SMS service. More details are available on the SARS website," he said. Provisional taxpayers have until 31 January 2022 to fulfil all their filing obligations.

Kerssangdiens vind plaas

BRITSTOWN – Die jaar is amper om, en die NG Kerk Britstown is baie opgewonde oor die Feesseisoen wat vir voorlê!

NG Kerk Britstown bied volgende week die 21ste November, in Samewerking met DJ Muller 'n onvergeetlike Kerssangdiens aan. Die diens belooft om 'n belewenis te wees! Tydens die diens sal daar ook Nagmaal bedien word en die nuutste lidmate sal verwelkom word. Die verrigtinge begin om 09:00 en daar sal na die tyd verversings wees om lekker saam te kuier in die Kerksaal.

Sien jou daar! Bring u hele gesin en geniet die Kerssangdiens saam met die gemeente.



Geagte Redakteur

Ek wil graag my misnoë uitspreek teenoor die swak dienslewering van ons plaaslike hospitaal.

Jy moet wag tot vyf ure voordat jy gehelp word, maar as jy geken word dan sal jy voorkeur kry. Daar is min personeel aan diens en die wat aan diens is gaan op tee of ete, terwyl jy wag om gehelp te word. Hulle gee net nie om oor jou toestand nie. 'n Mens kan nie glo dat so groot hospitaal so swak diens het nie, die ou hospitaal was baie beter. Daar sal beslis daadwerklik opgetree moet word.

Baie Dankie, Heinrich Louw, 071 173 3746.



Three learners from St John's Primary School represented the school at a Mathematics competition at Kareeville Primary School. The learners did very well and got the school two second places and one third place. The school is proud of these learners. F.l.t.r: Tamaryn Perry (Grade 5 - Second place), Asikelele Nothula (Grade 5 - Second place) and Keisha Grensville (Grade 4 - Third place).



Derde Plek van ons 1-2 jaar Katagorie - Busy Bee - Anna-Mae.



Die wenner van die 3-4 jaar Katagorie - Full of Joy - Elin-Rie.



Tweede Plek van ons 3-4 jaar Katagorie - Full of Joy - Cloé



Reeds vroegoggend is daar vuur aangesteek wat gesorg het vir 'n heerlike atmosfeer.

NOTICE OF ENVIRONMENTAL IMPACT ASSESSMENT, BASIC ASSESSMENT & PUBLIC PARTICIPATION PROCESSES FOR THE PROPOSED DEVELOPMENT OF THE GREAT KAROO CLUSTER OF RENEWABLE ENERGY FACILITIES & GRID CONNECTION INFRASTRUCTURE, NEAR RICHMOND, NORTHERN CAPE PROVINCE

Applicant: Great Karoo Renewable Energy (Pty) Ltd.

Proposed Activity: Establishment of three (3) Solar Photovoltaic (PV) Energy Facilities, two (2) Wind Energy Facilities & grid connection infrastructure comprising a 132kV central collector substation & a 132kV power line to enable the connection of five (5) renewable energy facilities to the national grid for the evacuation of the generated electricity. The connection point to the national grid will be the existing Eskom Gamma Substation. Infrastructure associated with each project include:

Solar Energy Facilities	Wind Energy Facilities	Grid Connection Infrastructure
<ul style="list-style-type: none"> Solar PV array comprising PV modules & mounting structures. Inverters & transformers. Cabling between the panels. 33/132kV onsite facility substation. Cabling from the onsite substation to the collector substation (either underground or overhead). Electrical & auxiliary equipment required at the collector substation that serves that solar energy facility, including switchyard/bay, control building, fences, etc. Battery Energy Storage System (BESS). Site offices & maintenance buildings, including workshop areas for maintenance & storage. Laydown areas. Access roads & internal distribution roads. 	<ul style="list-style-type: none"> Wind turbines. Concrete turbine foundations & turbine hardstands. Inverters & transformers. Temporary laydown areas which will accommodate storage & assembly areas. Cabling between the turbines, to be laid underground where practical. A temporary concrete batching plant. 33/132kV onsite facility substation. Underground cabling from the onsite substation to the collector substation. Electrical & auxiliary equipment required at the collector substation that serves that wind energy facility, including switchyard/bay, control building, fences, etc. Battery Energy Storage System (BESS). Access roads & internal distribution roads. Site offices & maintenance buildings, including workshop areas for maintenance & storage. 	<ul style="list-style-type: none"> Central collector substation which consists of: <ul style="list-style-type: none"> 33/132kV collector substation. Associated equipment, infrastructure, & buildings. Temporary & permanent laydown areas. Distribution Line: <ul style="list-style-type: none"> A double-circuit 132kV distribution line to connect the central collector 132kV substation to the existing Eskom Gamma Substation will be constructed.

Project Location: The five (5) proposed renewable energy facilities, along with their associated grid connection infrastructure, are located approximately 35km South-West of Richmond along the N1 & approximately 80km South-East of Victoria West along the R63 in the Northern Cape Province, within the Ubuntu Local Municipality, & the Pixley Ka Seme District Municipality. A portion (approximately 2km) of the 132kV power line that will connect the 132kV central collector substation to the Eskom Gamma Substation falls within the Beaufort West Local Municipality which forms part of the greater Cape Winelands District Municipality in the Western Cape Province.

Solar Energy Facilities 100MW		Wind Energy Facilities 140MW	
Project	Property	Project	Properties
Nku Solar PV Facility		Angara Wind Energy Facility	<ul style="list-style-type: none"> Portion 11 of Farm Gegundfontein 53 Portion 0 of Farm Vogelstruisfontein 84 Portion 1 of Farm Rondavel 85 Portion 0 of Farm Rondavel 85
Moriri Solar PV Facility	<ul style="list-style-type: none"> Farm Rondavel 85 (Portion 0 & 1) 	Merino Wind Energy Facility	<ul style="list-style-type: none"> Portion 1 of Farm Rondavel 85 Portion 0 of Farm Rondavel 85 Portion 9 of Farm Bult & Rietfontein 96
Kwana Solar PV Facility			

Savannah Environmental website: <https://savannahsa.com/public-documents/energy-generation/the-great-karoo-cluster-of-renewable-energy-facilities/>

Collector Electrical Grid Infrastructure (EGI)	
Project	Properties
Collector EGI (132kV)	<ul style="list-style-type: none"> Portion 0 of Farm Annex Rondavel 86 Portion 1 of Farm Annex Rondavel 86 Portion 1 of Farm Uit Vlugt Fontein 265 Portion 0 of Farm Wynandsfontein 91 Portion 1 of Farm Wynandsfontein 91 Portion 3 of Farm Vieklfontein 90 Portion 0 of Farm Burgersfontein 92 Portion 1 of Farm Nieuwe Fontein 89 Portion 0 of Farm Rondavel 85 Portion 1 of Farm Rondavel 85 Portion 0 of Farm Kleinfontein 93 Portion 8 of Farm Jan Booyens Onder Plaats 94 Portion 1 of Farm Bult & Rietfontein 96 Remaining extent of Farm 3

Scoping & Environmental Impact Assessment (S&EIA) & Basic Assessment (BA) Processes: In terms of Sections 24 & 24D of the National Environmental Management Act (No 107 of 1998), as read with Government Notice R324 - R327, as amended, a S&EIA process is required for each renewable energy facility. Similarly, a BA process is required for the grid connection infrastructure. Savannah Environmental is undertaking the required S&EIA, BA, & public participation processes for these projects.

Scoping Reports & BA Report available for review & comment: The Scoping & Reports for each of the renewable energy facilities are available for download, review, & comment on the Savannah Environmental website (see applicable link in table above). The 30-day review & comment period of the Scoping Reports is from Friday, 12 November 2021 until Monday, 13 December 2021. The availability of the BA Report for the grid connection infrastructure for a 30-day review and comment period will be communicated in due course.

Information Session: Interested and affected parties (I&APs) are invited to attend the Information Session (poster display) which will take place at the Richmond Show Grounds on Thursday, 2 December 2021 at 14:00. The Information Session will take place in compliance with COVID-19 protocols, and attendees are limited to 12 persons at a time in the Hall. Please contact Nicoleene Venter or Tumelo Mathulwe (details below) to register your attendance.

To obtain further information & register on the project database, please submit your name, contact information & interest in the project to the contact person below.

Nicoleene Venter or Tumelo Mathulwe at Savannah Environmental
P.O. Box 148, Sunninghill, 2157
Tel: 011 656 3237
Fax: 086 684 0547
Mobile: 060 978 8396 (including please call me)
Email: publicprocess@savannahsa.com

savannah
environmental

GREAT KAROO RENEWABLE CLUSTER DEVELOPMENTS
LIVEREAD: RSG FM

UITSAAITYD:

- Saturday, 13 November 2021 – tussen 19h00 & 21h00
Afrikaans

Aan alle gemeenskapslede – die Great Karoo Sonkrag Hernubare Fotovoltaise and Windkrag ontwikkelings naby Richmond in die Noord-Kaapprovinsie word beplan . Savannah Environmental onderneem die Bestekopname en Omgewingsimpakevaluering en die Openbare Deelnameprosesse. Die Bestekopnameverslae vir die projekte is beskikbaar vir jou insae en kommentaar en aflaaibaar by www.savannahsa.com.

Die 30-dae insae en kommentaartydperk is vanaf **Vrydag, 12 November 2021** tot en met **Maandag, 13 Desember 2021**.

Vir meer inligting en om op die projekdatabasis te registreer, stuur jou naam en kontakligting aan Nicolene by 060 978 8396, of stuur 'n epos aan publicprocess@savannahsa.com.

UITSAAITYD

- Saturday, 04 December 2021 tussen 19h00 & 21h00

Aan alle gemeenskapslede – die Great Karoo Sonkrag Hernubare Fotovoltaise and Windkrag ontwikkelings naby Richmond in die Noord-Kaapprovinsie word beplan . Savannah Environmental onderneem die Bestekopname en Omgewingsimpakevaluering en die Openbare Deelnameprosesse. Die Bestekopnameverslae vir die projekte is beskikbaar vir jou insae en kommentaar en aflaaibaar by www.savannahsa.com.

Die 30-dae insae en kommentaartydperk eindig op **Maandag, 13 Desember 2021**.

Vir meer inligting en om op die projekdatabasis te registreer, stuur jou naam en kontakligting aan Nicolene by 060 978 8396 of stuur 'n epos aan publicprocess@savannahsa.com.



Commercial Enterprises
 C/O Artillery and Canary Roads
 Auckland Park 2092
 P.O. Box 91102 Auckland Park
 Tel: (011) 714-7020 Fax: (011) 714-7182

Date: Friday, November 12, 2021

Billing Client SAVANNAH ENVI 237061
Advertiser SAVANNAH ENVIRONMENTAL PTY
Campaign SAVANNAH ENVIRO
Booker
External Reference
Sales Person BASIL JACOBS

Order Number 221111 **Version** 0 **Start Date** 2021/11/13
Date Created 2021/11/12 **End Date** 2021/12/04
Business Type CLASSIC

Bill Month Nov-2021

Station RSG

Week Commence 2021/11/08

Time Channel	Dur	Mon	Tue	Wed	Thu	Fri	Sat	Sun	Qty	Gross	Discount	Total	
19:00:00 - 20:59:59	60						1		1	1 680.00	0.00	1 680.00	
2021/11/08 Sub-Total									1	1	1 680.00	0.00	1 680.00
Nov-2021 Sub-Total									1	1	1 680.00	0.00	1 680.00

Bill Month Dec-2021

Station RSG

Week Commence 2021/11/29

Time Channel	Dur	Mon	Tue	Wed	Thu	Fri	Sat	Sun	Qty	Gross	Discount	Total	
19:00:00 - 20:59:59	60						1		1	1 680.00	0.00	1 680.00	
2021/11/29 Sub-Total									1	1	1 680.00	0.00	1 680.00
Dec-2021 Sub-Total									1	1	1 680.00	0.00	1 680.00

Total Order Amount Excl. VAT	3 360.00
Discount	0.00
Added Value Amount	0.00
Sub-Total	3 360.00
Total VAT Amount	504.00
Total Including VAT	3 864.00

Terms & Conditions

SABC Standard Terms & Conditions Apply. All rates exclude V.A.T.



Commercial Enterprises
 C/O Artillery and Canary Roads
 Auckland Park 2092
 P.O. Box 91102 Auckland Park
 Tel: (011) 714-7020 Fax: (011) 714-7182

Date: Friday, November 12, 2021

Billing Client SAVANNAH ENVI 237061
Advertiser SAVANNAH ENVIRONMENTAL PTY
Campaign SAVANNAH ENVIRO
Booker
External Reference
Sales Person BASIL JACOBS

Order Number 221111 **Version** 0 **Start Date** 2021/11/13
Date Created 2021/11/12 **End Date** 2021/12/04
Business Type CLASSIC

Bill Month Nov-2021

Station RSG

Week Commence 2021/11/08

Time Channel	Dur	Mon	Tue	Wed	Thu	Fri	Sat	Sun	Qty	Gross	Discount	Total	
19:00:00 - 20:59:59	60						1		1	1 680.00	0.00	1 680.00	
2021/11/08 Sub-Total									1	1	1 680.00	0.00	1 680.00
Nov-2021 Sub-Total									1	1	1 680.00	0.00	1 680.00

Bill Month Dec-2021

Station RSG

Week Commence 2021/11/29

Time Channel	Dur	Mon	Tue	Wed	Thu	Fri	Sat	Sun	Qty	Gross	Discount	Total	
19:00:00 - 20:59:59	60						1		1	1 680.00	0.00	1 680.00	
2021/11/29 Sub-Total									1	1	1 680.00	0.00	1 680.00
Dec-2021 Sub-Total									1	1	1 680.00	0.00	1 680.00

Total Order Amount Excl. VAT	3 360.00
Discount	0.00
Added Value Amount	0.00
Sub-Total	3 360.00
Total VAT Amount	504.00
Total Including VAT	3 864.00

Terms & Conditions

SABC Standard Terms & Conditions Apply. All rates exclude V.A.T.