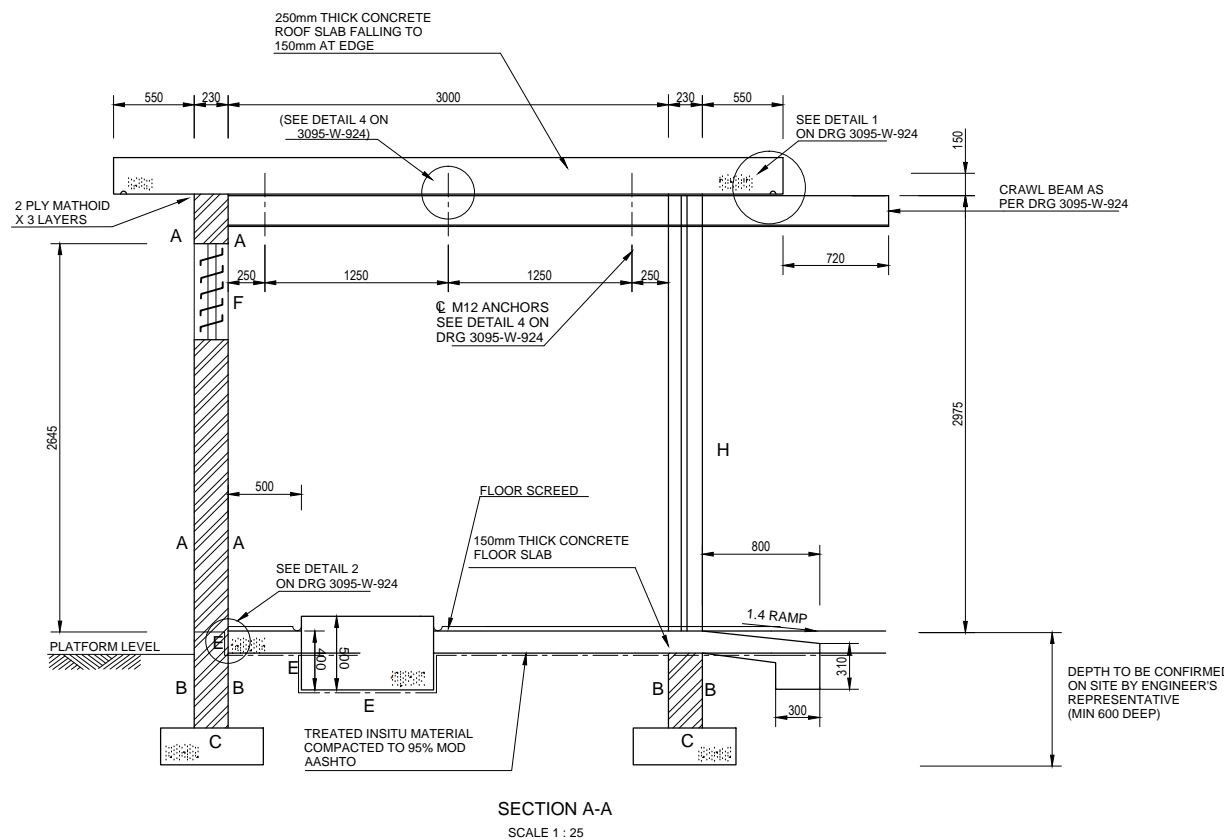
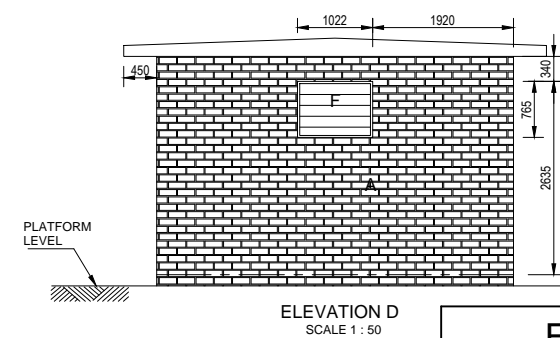
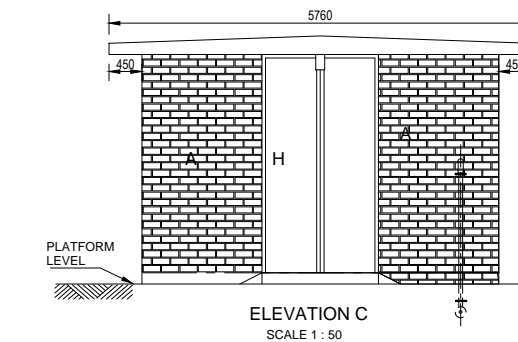
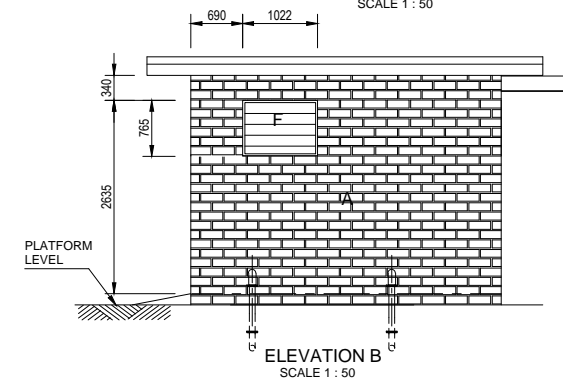
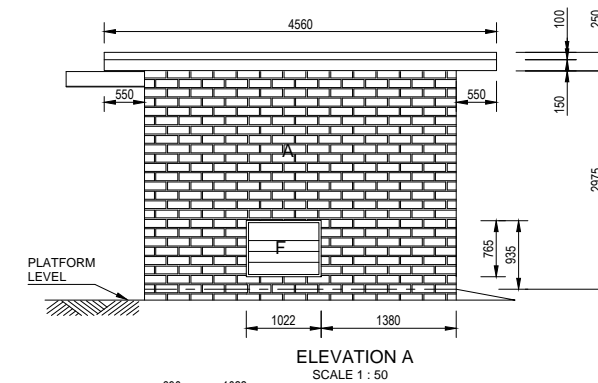


DESCRIPTION OF MATERIAL	
ITEM	DESCRIPTION
A	BRICKWORK : FACE BRICKS AS APPROVED IN STRETCHERBOND WITH 3 : 1 CEMENT MORTAR, 10mm HORIZONTAL AND VERTICAL TOOLED SQUARE JOINTS BRICKFORCE EVERY 4 COURSE AND EVERY COURSE FOR 4 COURSE OVER LOUVRE AND WINDOW OPENINGS. TO PROJECT MINIMUM 500 EITHER SIDE OF OPENING. BRICKFORCE FOR EVERY COURSE FOR FIRST FOUR COURSE ABOVE FOUNDATION AND FOR FIRST FOUR COURSE BELOW ROOF SLAB.
B	BRICKWORK : STOCK BRICKS AS APPROVED IN STRETCHERBOND WITH 3 : 1 MORTAR, JOINTING BELOW PLATFORM LEVEL TO BE FLUSH
C	STRIP FOUNDATION : 250mm DEEP BY 730mm WIDE 25/19 UNREINFORCED CONCRETE STRIP FOOTING
D	FLOOR FILLING : RIP AND RECOMPACT IN-SITU MATERIAL TO MIN 95% MOD AASHTO
E	DAMP COURSE : ONE LAYER 250 MICRON WATERPROOF SHEETING BELOW FLOOR AND UNDER ALL WALLS AT FLOOR LEVEL. OVERLAPS MIN 300 AND TAPED SEALED AS APPROVED.
F	LOUVRES : FIXED LOUVRES FITTED WITH INSECT PROOF GAUZE.
H	DOOR : MODIFIED STEEL TRANSFORMER DOUBLE DOORS BY BITCON INDUSTRIES OR SIMILAR APPROVED (MODIFICATION DETAIL ON DRG 3095-W-924) TO ROOF HEIGHT

NOTES:

- CONCRETE GRADES
STRIP FOUNDATIONS: 25/19
FLOOR SLAB/PLINTHS: 25/19
THRUST WALLS: 25/19
ROOF SLAB: 30/19
- BRICKWORK
BRICKS TO HAVE A MINIMUM NOMINAL CRUSHING STRENGTH OF 10 MPA AND TO BE APPROVED BY ENGINEER.
- SOIL POISONING BELOW FLOOR SLAB TO MEET LOCAL AUTHORITY REGULATIONS.
- LOUVRES TO BE BURGLAR PROOFED (INTERNAL) FOR BURGLAR BARS. VERTICAL SPACING TO BE 200mm AND HORIZONTAL SPACING TO BE 150mm.
- STEEL SURFACES (WINDOWS, CRAWL BEAM, DOOR FRAMES, BURGLAR BARS, LOUVRES e.t.c) TO BE PAINTED WITH ONE COAT OF ETCH PRIMER AND TWO COATS WHITE ENAMEL.
- ALL LOUVRES FRAMES TO HAVE BRICK LINTOLS.
- DOORS TO BE EQUIPPED WITH 3-SECURE PADLOCK.
- CONCRETE SURFACE FINISHES
ROOF TOP - WOOD FLOAT - TO RECEIVE FLEXIBLE ACRYLIC WATERPROOFING SYSTEM
ROOF SOFFIT - OFF SHUTTER FINISH
STRIP FOUNDATION - TAMPED
FLOOR SLAB - TAMPED - TO RECEIVE SCREED.
PLINTHS AND THRUST WALLS - STEEL FLOAT TO ALL VISIBLE SURFACES
20 X 20mm CHAMFERS TO BE PROVIDED TO ALL EXPOSED CONCRETE EDGES.
- GRANULITHIC SCREED TO BE 40 MPa CONCRETE SCREED. (1 PART CEMENT TO 1 1/2 PARTS FINE AGGREGATE TO 2 PARTS COARSE AGGREGATE) FLOOR SURFACE RECEIVING SCREED TO BE PREPARED USING EPIDERMIX 116 (ABE OR SIMILAR APPROVED), CEMENTITIOUS SCREED ADHESIVE.



No	DESCRIPTION	NAME	DATE
A	ISSUED FOR TENDER PURPOSES	TB	29 AUG 2013

REVISION

CLIENT:

Department of Rural Development & Land Reform
188 HOUSEN HAFEEJEE STREET
PIETERMARITZBURG 3200
Tel: (+27) 33 355 4300

APPROVED:	
CAPACITY:	
DATE:	

Jeffares & Green
ENGINEERING & ENVIRONMENTAL CONSULTING
P.O. BOX 794
HILTON 3245
6 PIN OAK AVENUE, HILTON, 3245
TEL: (033) 343-6700
FAX: (033) 343-6701
jgipmb@jgi.co.za

SCALE ON A1 : AS SHOWN	DATE: 29 AUGUST 2013
DRAWN: N. MAPHANGA	DESIGNED: T. BAIER
DRAWING No. 3095-W-920	CHECKED: A. BUTLER

APPROVED ON BEHALF OF JGI: SIMON JOHNSON
CAPACITY: EXECUTIVE ASSOCIATE
DATE: 29 AUGUST 2013

PROJECT: NSUZE IRRIGATION SCHEME EASTERN PORTION
TITLE: TYPICAL BOOSTER PUMP STATION STRUCTURE

FOR TENDER	3095-W-920	A
------------	------------	---

TYPICAL BOOSTER PUMP STATION STRUCTURE DWG