

## Background Information Documents

24 February 2020

Dear Interested and Affected Party,

## BASIC ASSESSMENT AND PUBLIC PARTICIPATION PROCESS

### OLIFANTSHOEK 132kV POWER LINE, OLIFANTSHOEK, NORTHERN CAPE PROVINCE

#### NOTICE OF BASIC ASSESSMENT PROCESS

The Gamagara Local Municipality is proposing the construction and operation of the grid connection infrastructure consisting of a single circuit 132kV power line between the existing Emil Traction Substation and the authorised Olifantshoek Substation near the town of Olifantshoek, Northern Cape Province. The purpose of the proposed power line will be to strengthen the electricity grid network within the municipality's jurisdictional area in order to ensure adequate supply to residents.

The proposed power line development falls within Wards, 03, 04, 05 and 06 of the Gamagara Local Municipality and is also located within the greater John Taolo Gaetsewe District Municipality, Northern Cape Province.

The details of the project are as follows:

Single circuit 132kV power line	The single circuit power line will be known as the Olifantshoek 132kV Power Line.
Corridor Width (for assessment purposes)	300m
Corridor Length	36km
Power Line Registered Servitude Width	31m
Tower Height (pylons)	Up to 20m
Affected Properties	Remaining Extent of the Farm Fritz 540
	Portion 1 of the Farm Fritz 540
	Portion 2 of the Farm Fritz 540
	Portion 4 of the Farm Fritz 540
	Portion 5 of the Farm Fritz 540
	Portion 8 of the Farm Fritz 540
	Portion 9 of the Farm Fritz 540
	Portion 10 of the Farm Fritz 540
	Remaining Extent of the Farm Gamagara 541

Affected Properties (continued)	Portion 1 of the Farm Gamagara 541
	Portion 7 of the Farm Gamagara 541
	Portion 1 of the Farm Cox 571
	Portion 3 of the Farm Cox 571
	Portion 4 of the Farm Cox 571
	Remaining Extent of the Farm Hartley 573
	Portion 3 of the Farm Hartley 573
	Portion 1 of the Farm Wright 538
	Remaining Extent of the Farm Murray 570
	Portion 2 of the Farm Murray 570
	Remaining Extent of the Farm Dingle 565
	Portion 2 of the Farm Dingle 565
	Remaining Extent of the Farm Diegaart's Heuwel 765
	Remaining Extent of the Farm Neylan 574
	Portion 1 of the Farm Neylan 574
	Remaining Extent of the Farm Neylan 766
	Portion 3 of the Farm Neylan 766
Portion 4 of the Farm Neylan 766	
Portion 7 of the Farm Neylan 766	
Remaining Extent of the Farm Erf 155 Olifantshoek	

## BASIC ASSESSMENT PROCESS

The development (i.e. construction and operation) of the grid connection infrastructure is subject to the requirements of the Environmental Impact Assessment (EIA) Regulations of 2014 published in terms of Section 24(5) of NEMA. In terms of the EIA Regulations of 2014, as amended, and promulgated under Sections 24 and 24D of the NEMA, various aspects of the project are listed as activities that may have a detrimental impact on the environment. The main listed activity triggered by the proposed grid connection infrastructure is Activity 11(i) of Listing Notice 1 (GNR327 of the EIA of facilities or infrastructure for the transmission and distribution of electricity outside urban areas or industrial complexes with a capacity of more than 33 but less than 275 kilovolts.

Due to the triggering of Activity 11(i) of Listing Notice 1, of the EIA Regulations, 2014 (as amended), a Basic Assessment process must be undertaken in order to obtain Environmental Authorisation for the construction and operation of the Olifantshoek 132kV Power Line. Savannah Environmental was appointed as the independent environmental consultant to undertake the Basic Assessment for the project to identify and assess all potential environmental impacts associated with the grid connection and recommend appropriate mitigation measures in an Environmental Management Programme (EMPr).

You and/or the organisation, which you represent, has been identified as an Interested and Affected Party (I&AP) for the proposed project as described above. A background information document, which provides further information on the BA process as well as the nature and extent of the proposed power line development, is attached to this letter and is also available for download on the Savannah Environmental Website:

<https://www.savannahsa.com/public-documents/grid-infrastructure/olifantshoek-power-line/>

Should you have an interest in the project, please register yourself as an I&AP by completing and returning the attached registration and comment form. By registering on the project database, you will be kept informed of the BA process being undertaken for the project and will be provided with an opportunity to provide comment and input.

Please do not hesitate to contact us should you require additional information and/or clarification regarding the project. Our team welcomes your participation and look forward to your involvement throughout this process.

Kind regards

A handwritten signature in black ink, appearing to read 'Nicolene'.

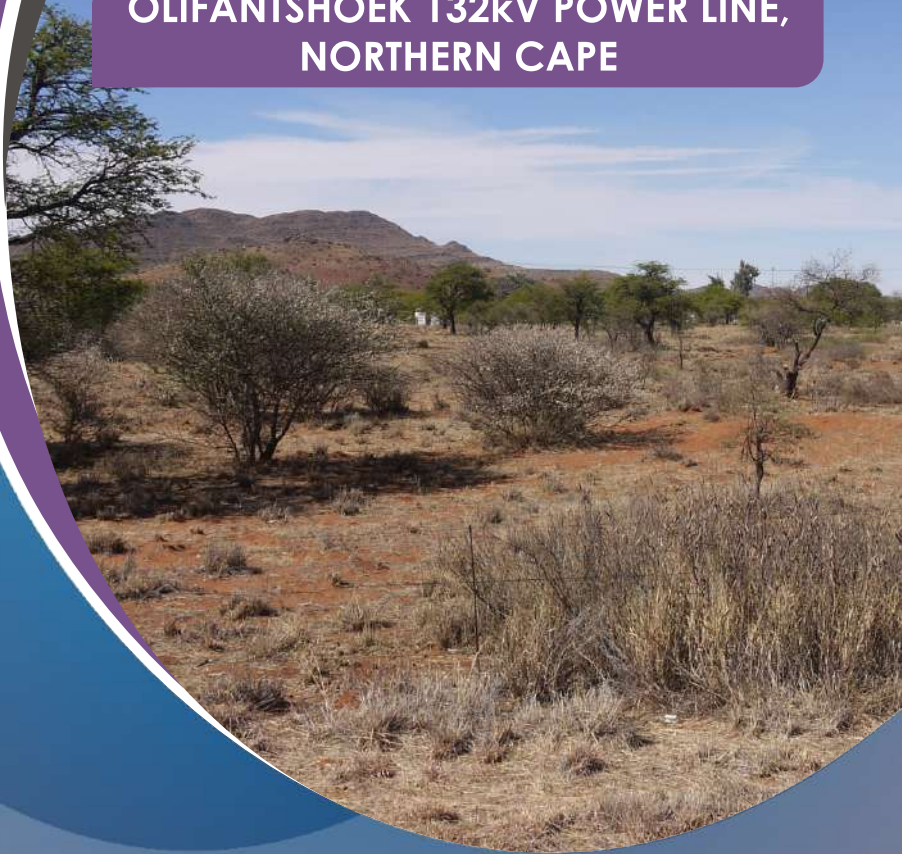
Nicolene Venter  
Public Participation and Social Consultant  
E-mail: [publicprocess@savannahsa.com](mailto:publicprocess@savannahsa.com)

**Documents:** Background Information Document  
Registration and Comment Form

FEBRUARY 2020

ENVIRONMENTAL IMPACT ASSESSMENT  
AND  
PUBLIC PARTICIPATION PROCESS

OLIFANTSHOEK 132kV POWER LINE,  
NORTHERN CAPE



savannah  
environmental

BACKGROUND INFORMATION DOCUMENT



The Gamagara Local Municipality proposes the construction and operation of a single circuit 132kV power line and an associated haul road between the existing Elim Traction Substation and the authorised Olifantshoek Substation near the town of Olifantshoek in the Northern Cape Province. The power line will be used to strengthen the grid network in the area in order to ensure adequate supply of electricity for residents within the municipality's jurisdictional area. The project is located within the greater John Taolo Gaetsewe District Municipality and the Gamagara Local Municipality in the Northern Cape Province.

The nature and extent of the grid connection infrastructure is explored in more detail in this Background Information Document (BID). The public participation process to be undertaken for the project will provide interested and affected parties (I&APs) and organs of state with an opportunity to comment on the project.

### AIM OF THIS BACKGROUND INFORMATION DOCUMENT

This document aims to provide you, as an interested and/or affected party (I&AP), with:

- » An overview of the proposed power line.
- » An overview of the BA process and specialist studies being undertaken to assess the development of the power line.
- » Details of how you can become involved in the BA process, receive information, or raise issues, which may concern and/interest you.

### PROJECT DETAILS

The power line and a two-way 4m wide haul road (to be used during the construction phase) will be developed within a 300m wide and 36km long grid connection corridor with a 31m servitude, which will allow for the optimisation of the infrastructure to be developed and to avoid identified environmental sensitivities. As per the requirements of the EIA Regulations, 2014 (as amended), a basic assessment (BA) process is required to be undertaken in support of an application for Environmental Authorisation for the project.

The grid connection infrastructure is proposed on the following properties (refer to the attached Locality Map):

Remaining Extent of the Farm Fritz 540	Portion 1 of the Farm Gamagara 541
Portion 1 of the Farm Fritz 540	Portion 7 of the Farm Gamagara 541
Portion 2 of the Farm Fritz 540	Portion 2 of the Farm Dingle 565
Portion 4 of the Farm Fritz 540	Remaining Extent of the Farm Dingle 565
Portion 5 of the Farm Fritz 540	Remaining Extent of the Farm Smythe 566
Portion 8 of the Farm Fritz 540	Portion 1 of the Farm Wright 538
Portion 9 of the Farm Fritz 540	Remaining Extent of the Farm Murray 570
Portion 10 of the Farm Fritz 540	Portion 2 of the Farm Murray 570
Remaining Extent of the Farm Gamagara 541	Remaining Extent of the Farm Cox 571
Portion 4 of the Farm Cox 571	Portion 1 of the Farm Cox 571

Remaining Extent of the Farm Hartley 573	Portion 3 of the Farm Cox 571
Portion 3 of the Farm Hartley 573	Remaining Extent of the Farm Diegaart's Heuwel 765
Remaining Extent of the Farm Neylan 574	Portion 1 of the Farm Neylan 574
Remaining Extent of the Farm Neylan 766	Portion 3 of the Farm Neylan 766
Portion 4 of the Farm Neylan 766	Portion 7 of the Farm Neylan 766
Remaining Extent of the Farm Erf 155 Olifantshoek	

### ENVIRONMENTAL IMPACT ASSESSMENT PROCESS

In accordance with the EIA Regulations, 2014 (as amended) published in terms of Section 24(5) of the National Environmental Management Act (No. 107 of 1998) (NEMA), the proponent requires Environmental Authorisation (EA) from the National Department of Environmental Affairs (DEA)<sup>1</sup> in consultation with the Northern Cape Department of Environment and Nature Conservation (DENC) for the development and operation of the proposed project. In terms of Section 24(5) of NEMA, the 2014 EIA Regulations (GNR 326) and the Listing Notice 1 (GNR 327), the application for EA is subject to the completion of a BA process, as the capacity of the power line will be up to 132kV. The application for EA is required to be supported by comprehensive, independent environmental studies undertaken in accordance with Appendix 6 of the 2014 EIA Regulations (GNR 326).

A BA is an effective planning and decision-making tool as it allows for potential environmental consequences resulting from a proposed activity to be identified and appropriately managed during the construction, operation, and decommissioning phases of development. It also provides an opportunity for the project proponent to be forewarned of potential environmental issues and allows for the resolution of issue(s) identified and reported on as part of the BA process, as well as provides opportunity for dialogue with key stakeholders and I&APs.

Savannah Environmental has been appointed as the independent environmental consultant responsible for managing the application for EA and undertaking the supporting BA process required to identify and assess potential environmental impacts associated with the project, as well as propose appropriate mitigation and management measures to be contained within the Environmental Management Programme (EMPr). I&APs will be actively involved in the BA process through the public participation process.

### WHAT ARE THE POTENTIAL ENVIRONMENTAL IMPACTS ASSOCIATED WITH THE PROPOSED PROJECT?

The proposed grid connection corridor will be assessed by independent environmental specialists to identify the potential for environmental impacts. Specialist studies that are proposed as part of the BA process include the following:

- » Biodiversity - which includes ecology, fauna, flora) and freshwater features and assesses the potential impact and the associated disturbance of vegetation on the biodiversity (including critical biodiversity areas and broad-scale processes).
- » Avifauna - includes an assessment of impacts on avifaunal habitats and sensitive species.

<sup>1</sup> The Department of Environmental Affairs is soon to be called the Department of Environment, Forestry and Fisheries (DEFF).





- » Heritage - which includes an assessment of the potential of disturbance to, or destruction of heritage, archaeological and palaeontological sites during the construction phase through excavation activities.
- » Visual - which includes the visual quality of the area and assesses the impact of the power line infrastructure on the aesthetics within the area.
- » Social - which assesses the positive and negative impacts on the social environment.

The independent specialist studies will identify and assess the potentially significant impacts through desk-top and field studies, and input from the public participation process. Practical and achievable mitigation measures will be recommended in order to minimise the significance of the potential impacts identified. These recommendations will be included in the EMPr compiled for the project.

### PUBLIC PARTICIPATION PROCESS

The sharing of information forms the basis of the public participation process and offers I&APs the opportunity to become actively involved in the BA process being undertaken for the project. Comments and inputs from I&APs are encouraged in order to ensure that potential impacts are considered throughout. The public participation process aims to ensure that:

- » Information containing all relevant facts in respect of the application is made available to I&APs for review.
- » I&AP participation is facilitated in such a manner that they are provided with reasonable opportunity to comment on the proposed project.
- » An adequate review and comment period is provided for I&APs to comment on the findings of the BA Report.

In order to ensure effective participation, the public participation process includes the following:

- » Identifying I&APs, including affected and adjacent landowners and occupiers of land, and relevant Organs of State.
- » Placing site notices at strategic locations along the grid connection corridor.
- » Placing an advertisement in a local newspaper.
- » Compiling and maintaining a database of I&APs throughout the BA process.
- » Notifying I&APs of the commencement of the BA process and distributing the Background Information Document (BID).
- » Notifying I&APs of relevant milestones throughout the BA process.
- » Notifying I&APs of the release of the BA Report for a 30-day review and comment period.
- » Holding consultation meetings with I&APs during the 30-day review and comment period in order to provide the I&APs with an opportunity to engage with the EIA project team and raise comments on the project.
- » Notifying I&APs of DEA's final decision on whether to grant or refuse EA, and the manner in which such a decision may be appealed.

As an I&AP, your input is considered as an important part of the process, and we urge you to become involved.

### YOUR RESPONSIBILITIES AS AN I&AP

In terms of the EIA Regulations 2014, (GNR 326, as amended), your attention is drawn to your

responsibilities as an I&AP:

- » In order to participate in the BA process, you must register yourself on the I&AP database.
- » You must ensure that any comments regarding the proposed project are submitted within the stipulated timeframe.
- » You are required to disclose any direct business, financial, personal, or other interest that you may have in the approval or refusal of the application.

### HOW TO BECOME INVOLVED

1. By responding by phone, fax, or e-mail, to the invitation for your involvement.
2. By returning the reply form to the relevant contact person.
3. By attending meetings to be held during the course of the BA process.
4. By contacting the environmental consultants with queries or comments.
5. By reviewing and commenting on the BA Report within the stipulated 30-day review and comment period. Registered I&APs will automatically be notified of the release of the BA Report for comment, and the closing dates by which comments must be received.

If you consider yourself an I&AP for the proposed project, we urge you to make use of the opportunities created by the public participation process to provide comment, raise issues and concerns which affect and / or interest you, or request further information. Your input forms a key element of the BA process.

By completing and submitting the accompanying reply form, you automatically register yourself as an I&AP for the proposed project, and are ensured that your comments, concerns, or queries raised regarding the project will be noted.

### COMMENTS AND QUERIES

**Direct all comments, queries, or responses to:**

**Nicolene Venter**

P.O. Box 148, Sunninghill, Johannesburg, 2157

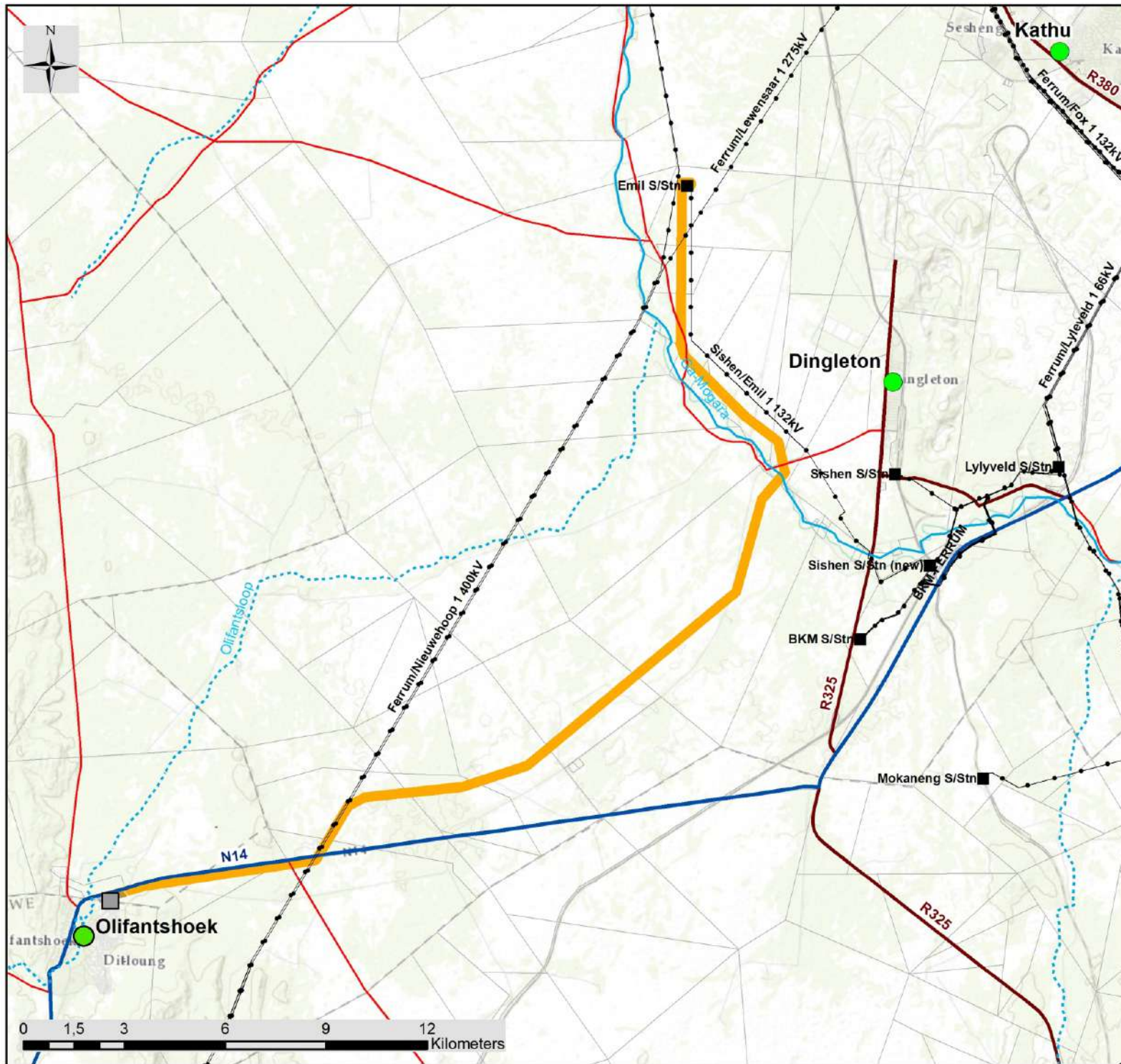
Tel: 011 656 3237

Fax: 086 684 0547

E-mail: [publicprocess@savannahsa.com](mailto:publicprocess@savannahsa.com)

**To view project documentation, visit**

[www.savannahSA.com](http://www.savannahSA.com)



# Olifantshoek 132kV Power Line, Northern Cape

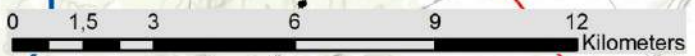
## Locality Map

### Legend

- Town
- Eskom Substations
- Eskom Power Line
- Perennial River
- - - Non-perennial River
- National Route
- Regional Road
- Main Road
- - - Railway Line
- Authorised Olifantshoek Substation
- Proposed 300m Power Line Corridor
- Farm Portions



Scale: 1 : 3 000 000  
 Projection: LO21  
 Ref: Olifantshoek 132kV Power Line, Northern Cape





FEBRUARIE 2020

OMGEWINGSIMPAKEVALUERING  
EN  
OPENBARE DEELNAMEPROSES

OLIFANTSHOEK 132 kV KRAGLYN,  
NOORD-KAAP

savannah  
environmental

AGTERGRONDINLIGTINGSDOKUMENT



Die Gamagara Plaaslike Munisipaliteit beoog die oprigting en bedryf van 'n enkelkring 132 kV kraglyn en 'n verwante vervoerpad tussen die bestaande Elim Trekkragsubstasie en die gemagtigde Olifantshoek Substasie naby die dorp Olifantshoek in die Noord-Kaapprovinsie. Die kraglyn sal gebruik word om die kraglyn in die gebied te versterk ten einde voldoende elektrisiteitsvoorsiening vir inwoners in die munisipaliteit se regsgebied te verseker. Die projek is geleë in die John Taolo Gaetsewe Distriksmunisipaliteit en omstreke en die Gamagara Plaaslike Munisipaliteit in die Noord-Kaapprovinsie.

Die aard en omvang van die roosterkonneksie-infrastruktuur word van naderby in hierdie Agtergrondinligtingsdokument (AID) ondersoek. Die openbare deelnameproses wat vir die projek onderneem moet word, sal aan belangstellende en geaffekteerde partye (B&GP's) en staatsinstansies 'n geleentheid bied om kommentaar op die projek te lewer.

### DOEL VAN HIERDIE AGERGRONDINLIGTINGSDOKUMENT

Hierdie dokument stel dit ten doel om u, as 'n belangstellende en/of geaffekteerde party (B&GP), te voorsien van:

- » 'n oorsig van die beoogde kraglyn;
- » 'n oorsig van die BE-proses en spesialisstudies wat onderneem word om die ontwikkeling van die kraglyn te evalueer; en
- » besonderhede van hoe u betrokke kan raak by die BE-proses, inligting kan ontvang of vraagstukke kan opper wat u dalk kan raak en/of wat vir u van belang kan wees.

### PROJEKBESONDERHEDE

Die kraglyn en 'n tweerigting 4 m breë vervoerpad (wat tydens die konstruksiefase gebruik sal word) sal ontwikkel word in 'n 300 m breë en 36 km lange roosterkonneksiekorridor met 'n 31 m serwituut, wat dit moontlik sal maak dat die infrastruktuur wat ontwikkel moet word, geoptimaliseer sal word en om geïdentifiseerde omgewingsensitiwiteit te vermy. Ingevolge die vereistes van die OIE-regulasies, 2014 (soos gewysig), moet 'n Basiese Evalueeringsproses (BE-proses) ter staving van 'n aansoek om Omgewingsmagtiging vir die projek onderneem word.

Die roosterkonneksie-infrastruktuur word op die volgende eiendomme beoog (raadpleeg die aangehegte Ligging Kaart):

Restant van die plaas Fritz 540	Gedeelte 1 van die plaas Gamagara 541
Gedeelte 1 van die plaas Fritz 540	Gedeelte 7 van die plaas Gamagara 541
Gedeelte 2 van die plaas Fritz 540	Gedeelte 2 van die plaas Dingle 565
Gedeelte 4 van die plaas Fritz 540	Restant van die plaas Dingle 565
Gedeelte 5 van die plaas Fritz 540	Restant van die plaas Smythe 566
Gedeelte 8 van die plaas Fritz 540	Gedeelte 1 van die plaas Wright 538
Gedeelte 9 van die plaas Fritz 540	Restant van die plaas Murray 570
Gedeelte 10 van die plaas Fritz 540	Gedeelte 2 van die plaas Murray 570
Restant van die plaas Gamagara 541	Restant van die plaas Cox 571

Gedeelte 4 van die plaas Cox 571	Gedeelte 1 van die plaas Cox 571
Restant van die plaas Hartley 573	Gedeelte 3 van die plaas Cox 571
Gedeelte 3 van die plaas Neylan 573	Restant van die plaas Diergaart's Heuwel 765
Restant van die plaas Neylan 574	Gedeelte 1 van die plaas Neylan 574
Restant van die plaas Neylan 766	Gedeelte 3 van die plaas Neylan 766
Gedeelte 4 van die plaas Neylan 766	Gedeelte 7 van die plaas Neylan 766
Restant van die plaas Erf 155 Olifantshoek	

### OMGEWINGSIMPAKEVALUERINGSPROSES

Ooreenkomstig die OIE-regulasies, 2014 (soos gewysig), wat kragtens Artikel 24(5) van die Nasionale Wet op Omgewingsbestuur (Wet 107 van 1998) (NEMA) gepubliseer is, benodig die proponent Omgewingsmagtiging (OM) van die Nasionale Departement van Omgewingsake (DO)<sup>1</sup>, in oorleg met die Noord-Kaapse Departement van Omgewingsake en Natuurbewaring (DENC), vir die ontwikkeling en bedryf van die beoogde projek. Ingevolge Artikel 24(5) van NEMA, die 2014 OIE-regulasies (Staatskennisgewing R326) en Lyskennisgewing 1 (Staatskennisgewing R327), is die aansoek om 'n OM onderhewig aan die voltooiing van 'n BE-proses, aangesien die vermoë van die kraglyn hoogstens 132 kV sal wees. Die aansoek om 'n OM moet gestaaf word deur omvattende, onafhanklike omgewingstudies wat ingevolge Bylae 6 van die 2014 OIE-regulasies (Staatskennisgewing R326) onderneem word.

'n BE is 'n doeltreffende beplannings- en besluitnemingswerktuig aangesien dit meebring dat potensiële omgewingsverwante gevolge wat voortspruit uit 'n beoogde aktiwiteit, geïdentifiseer en na behore tydens die oprigtings-, bedryfs- en uitbedryfstellingsfase van ontwikkeling bestuur kan word. Dit bied ook 'n geleentheid vir die projekproponent om vooraf gewaarsku te wees van potensiële omgewingskwessies en maak voorsiening vir die oplossing van kwessie(s) wat geïdentifiseer en as deel van die BE-proses oor verslag gedoen is, en bied ook die geleentheid vir dialoog met sleutelbelanghebbende en B&GP's.

Savannah Environmental is aangestel as onafhanklike omgewingskonsultant wat verantwoordelik is vir die bestuur van die aansoek om 'n OM en om die stawende BE-proses te onderneem wat vereis word om potensiële omgewingsimpakte wat verband hou met die projek te identifiseer en te evalueer, asook om gepaste versagtings- en bestuursmaatreëls aan die hand te doen wat in die Omgewingsbestuursprogram (OBPr) vervat moet word. Deur die openbare deelnameproses, sal B&GP's aktief betrokke wees in die BE-proses.

### WAT IS DIE POTENSIËLE OMGEWINGSIMPAKTE WAT VERBAND HOU MET DIE BEOOGDE PROJEK?

Die beoogde roosterkonneksiekorridor sal deur onafhanklike omgewingspesialiste geëvalueer word om die potensiaal vir omgewingsimpakte te identifiseer. Spesialisstudies wat as deel van die BE-proses beoog word, sluit die volgende in:

- » Biodiversiteit - wat insluit ekologie, fauna en flora en varswaterkenmerke - wat die potensiële impak en verwante versteuring van plantegroei op die biodiversiteit (insluitend

<sup>1</sup> Die Departement van Omgewingsake gaan binnekort die Departement van Omgewingsake, Bosbou en Visserye (DEFF) genoem word.

- » kritiese biodiversiteitsgebiede en breëskaalprosesse) evalueer.
- » Avifauna - sluit 'n evaluering van impakte op avifaunahabitats en sensitiewe spesies in.
- » Erfenis - wat insluit 'n evaluering van die potensiele versteuring of vernietiging van erfenis-, argeologiese en paleontologiese terreine tydens die konstruksiefase weens opgrawingsbedrywighede.
- » Visueel - wat insluit die visuele gehalte van die gebied - wat die impak van die kraglyninfrastruktuur op die estetika in 'n gebied evalueer.
- » Maatskaplik - wat die positiewe en negatiewe impakte op die sosiale omgewing evalueer.

### OPENBARE DEELNAMEPROSES

Die deel van inligting vorm die grondslag van die openbare deelnameproses en bied B&GP's die geleentheid om aktief by die BE-proses, wat vir die projek onderneem word, betrokke te raak. Kommentaar en insette van B&GP's word aangemoedig ten einde te verseker dat potensiele impakte deurentyd oorweging geniet.

Die openbare deelnameproses poog om te verseker dat:

- » inligting wat al die tersaaklike feite met betrekking tot die aansoek bevat, aan B&GP's beskikbaar gestel word vir insae;
- » deelname deur B&GP's op so 'n wyse gefasiliteer word dat hulle 'n redelike geleentheid gegun word om kommentaar op die beoogde projek te lewer; en
- » 'n voldoende insae- en kommentaartydperk aan B&GP's gebied word om kommentaar te lewer oor die bevindinge van die BE-verslag.

Ten einde doeltreffende deelname te verseker, sluit die openbare deelnameproses die volgende in:

- » Die identifisering van B&GP's, insluitend geaffekteerde en naburige grondeienaars en -bewoners en tersaaklike staatsinstansies.
- » Die plasing van terreinkennisgewings op strategiese plekke met die roosterkonneksiekorridor langs.
- » Die plasing van 'n advertensie in 'n plaaslike koerant.
- » Die opstel en byhou van 'n databasis van B&GP's regdeur die BE-proses.
- » Die verwittiging van B&GP's van die aanvang van die BE-proses en die verspreiding van die Agtergrondinligtingsdokument (AID).
- » Die verwittiging van B&GP's van tersaaklike mylpale regdeur die BE-proses.
- » Die verwittiging van B&GP's van die vrystelling van die BE-verslag vir 'n 30-dae openbare insae- en kommentaartydperk.
- » Die hou van oorlegplegingsvergaderings met B&GP's tydens die 30-dae insae- en kommentaartydperk om aan B&GP's 'n geleentheid te bied om met die OIE-projekspan te skakel en kommentaar op die projek te opper.
- » Die verwittiging van B&GP's van die DO se finale besluit oor die toestaan of weiering van die OM en die wyse waarop teen sodanige besluit geappelleer kan word.

As 'n B&GP word u insette as 'n belangrike deel van die proses geag, en ons moedig u aan om betrokke te raak.

### U VERANTWOORDELIKHEDE AS 'N B&GP

Kragtens die OIE-regulasies 2014, (Staatskennisgewing R326, soos gewysig), word u aandag gevestig op u verantwoordelikhede as 'n B&GP:

- » Ten einde aan die BE-proses deel te neem, moet u self op die B&GP-databasis registreer.
- » U moet toesien dat enige kommentaar met betrekking tot die beoogde projek binne die gestipuleerde tydsraamwerk ingedien word.
- » U moet enige regstreekse sake-, finansiële-, persoonlike- of ander belang wat u dalk in die goedkeuring of weiering van die aansoek kan hê, bekendmaak.

### HOE OM BETROKKE TE RAAK

1. Deur telefonies, per faks of per e-pos te reageer op die uitnodiging vir u betrokkenheid.
2. Deur die antwoordvorm aan die tersaaklike kontakpersoon terug te besorg.
3. Deur vergaderings by te woon wat tydens die verloop van die BE-proses gehou sal word.
4. Deur die omgewingskonsultante met navrae of kommentaar te kontak.
5. Deur oorsig oor en kommentaar op die BE-verslag te bied, en wel binne die gestipuleerde 30-dae insae- en kommentaartydperk. Geregistreerde B&GP's sal outomaties in kennis gestel word van die vrystelling van die BE-verslag vir kommentaar, asook van die sluitingsdatums waarteen kommentaar ontvang moet word.

As u self as 'n B&GP vir die beoogde projek ag, moedig ons u aan om gebruik te maak van die geleentheid wat geskep word deur die openbare deelnameproses om kommentaar te lewer of daardie kwessies en knelpunte te opper wat u raak en/of vir u van belang is of waaroor u meer inligting versoek. U insette vorm 'n belangrike deel van die BE-proses.

Deur die meegaande Antwoordvorm in te vul en aan ons terug te besorg, registreer u self outomaties as 'n B&GP vir die beoogde projek en verseker u dat kennis geneem sal word van die kommentaar, knelpunte of navrae wat u betreffende die projek opper.

### KOMMENTAAR EN NAVRAE

**Rig alle kommentaar, navrae of antwoorde aan:**

**Nicolene Venter**

Posbus 148, Sunninghill, Johannesburg, 2157

Tel: 011 656 3237

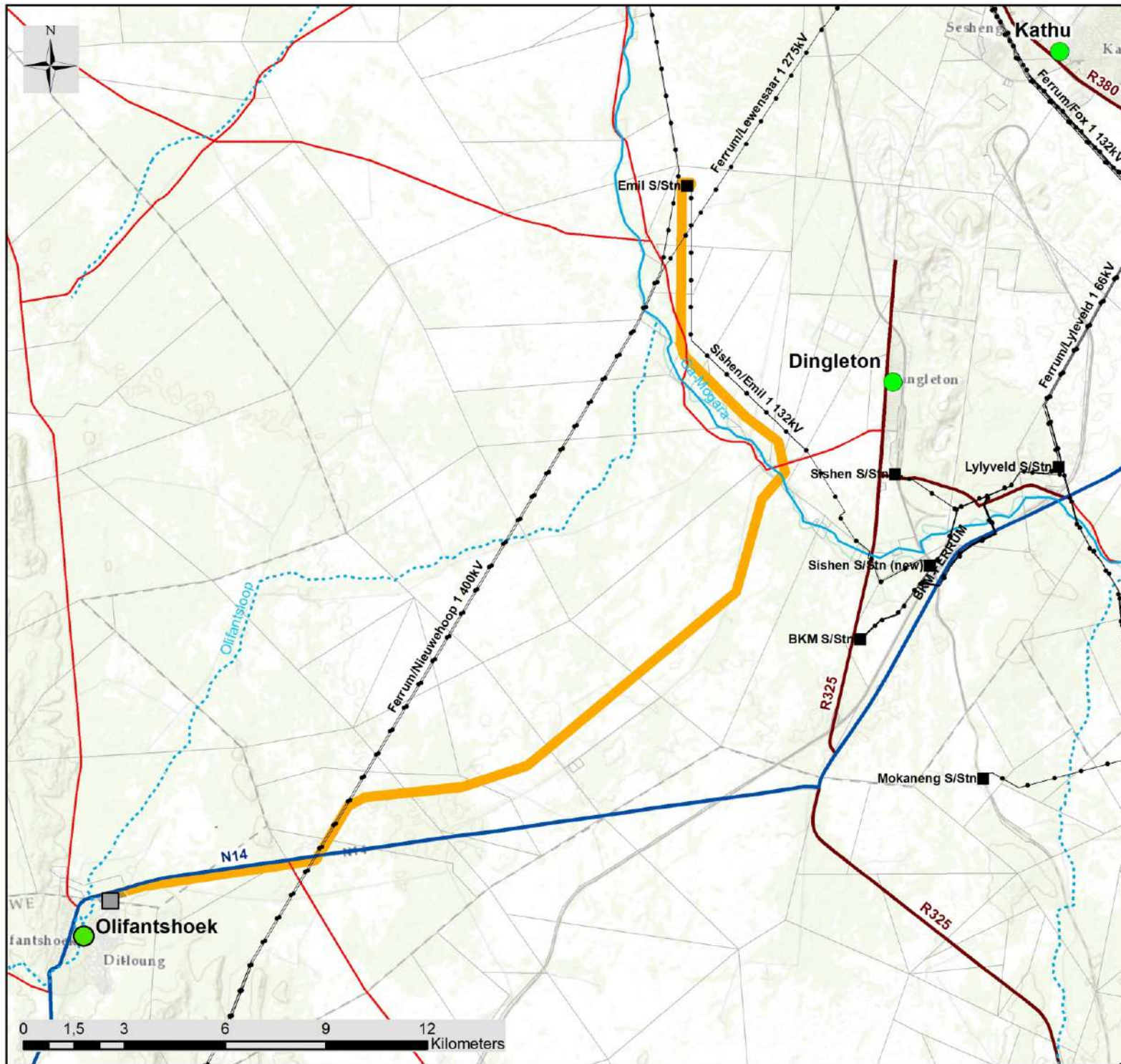
Faks: 086 684 0547

E-pos: [publicprocess@savannahsa.com](mailto:publicprocess@savannahsa.com)

**om projekdokumentasie te besigtig, besoek**

[www.savannahSA.com](http://www.savannahSA.com)





# Olifantshoek 132kV Power Line, Northern Cape

## Locality Map

### Legend

- Town
- Eskom Substations
- Eskom Power Line
- Perennial River
- - - Non-perennial River
- National Route
- Regional Road
- Main Road
- - - Railway Line
- Authorised Olifantshoek Substation
- Proposed 300m Power Line Corridor
- Farm Portions



Scale: 1 : 3 000 000  
 Projection: LO21  
 Ref: Olifantshoek 132kV Power Line, Northern Cape





**BASIC ASSESSMENT and PUBLIC PARTICIPATION PROCESS**

**OLIFANTSHOEK 132kV POWER LINE, OLIFANTSHOEK, NORTHERN CAPE PROVINCE**

**REGISTRATION AND COMMENT FORM  
(February 2020)**

Return completed reply form to: **Savannah Environmental**

Fax: **086 684 0547**

Phone: **011 656 3237**

E-mail: **publicprocess@savannahsa.com**

Postal Address: **PO Box 148, Sunninghill, 2157**

**Please provide your complete contact details:**

Name & Surname:		
Designation		
Department / Organisation:		
Postal Address:		
Telephone:	Fax:	
Cell phone:		
E-mail:		

**Would you like to register as an interested and affected party (I&AP)?** YES   
 (please tick the relevant box) NO

Note: You are required to register as an I&AP to receive further correspondence regarding the BA process for the project.

**Please state your interest in the project** (add additional pages if necessary):

**Please list your comments regarding the project** (add additional pages if necessary):

**Please provide contact details of other persons who you regard as a potential interested or affected party:**

Name & Surname:		
Organisation & Designation:		
Telephone:		
Cell phone No.:		
E-mail:		