

ENVIRONMENTAL AUTHORISATION APPLICATION SUBJECT TO A SCOPING AND ENVIRONMENTAL IMPACT ASSESSMENT FOR THE PROPOSED DEVELOPMENT OF THE ABO NDAU SOLAR ENERGY FACILITY 1 & 2, LOCATED WITHIN THE POLOKWANE LOCAL MUNICIPALITY AND CAPRICORN DISTRICT MUNICIPALITY, LIMPOPO PROVINCE.

Notice is hereby given of the intention of ABO Ndaou Solar Energy Facility 1 (Pty) Ltd, and ABO Ndaou Solar Facility 2 (Pty) Ltd (the Applicants) to apply for an Environmental Authorisation (EA), subject to a Scoping and Environmental Impact Assessment (S&EIA). Separate applications for Environmental Authorisations have been submitted for the proposed developments of the ABO Ndaou Solar Energy Facility 1 and associated infrastructure, and the ABO Ndaou Solar Energy Facility 2 and associated infrastructure, located within Polokwane Local Municipality and Capricorn District Municipality, Limpopo Province. The Department of Forestry, Fisheries and the Environment (DFFE) is the Competent Authority (CA) for the Solar facility applications.

The applications will be conducted in accordance with the requirements of the following legislation:

- The National Environmental Management Act, 1998 (Act 107 of 1998) (NEMA) and the Environmental Impact Assessment (EIA) Regulations, 2014 (as amended).
- The following Listed Activities are applicable to the proposals and have been applied for:

FACILITIES	LISTING NOTICE 1 (GNR 983)	LISTING NOTICE 2 (GNR 984)	LISTING NOTICE 3 (GNR 985)
Ndaou 1	11, 12, 19, 24, 28 and 56.	1 and 15.	3, 4, 14 and 18.
Ndaou 2	11, 12, 19, 24, 28 and 56.	1 and 15.	3, 4, 14 and 18.

Praxos 373 (Pty) Ltd has been appointed as the independent Environmental Assessment Practitioner (EAP) by the Applicant to undertake the required S&EIA processes and associated Public Participation Process (PPP) in support of the above applications.

PROJECT LOCATION

The study area is located within the Polokwane Local and Capricorn District Municipalities, within the Limpopo Province. ABO Ndaou Solar Energy Facility 1 is located on Portion 19 of the Farm Rietvley No. 13. ABO Ndaou Solar Energy Facility 2 is located on Portion 5 (Portion of Portion 2) of the Farm Rotterdam No. 12 and Remaining Extent of Portion 2 of the Farm Rotterdam No. 12.

PUBLIC PARTICIPATION

The project is hereby announced. Interested and Affected Parties (I&APs) are hereby invited to register on the project database and/ or comment on the Draft Scoping Reports (DSRs) that will be made available for public review from **Wednesday, 13 September to Monday, 16 October 2023** (30 days exclusive of public holidays).

Please refer to the table shown for the venues / locations where the DSRs will be made available for review and comment.

Should you wish to register as an I&AP, obtain additional information or comment on the proposed project, please contact the Public Participation Office at the details provided below.

Notifications to registered I&APs for comment on the Draft Environmental Impact Reports will be undertaken at a later stage.

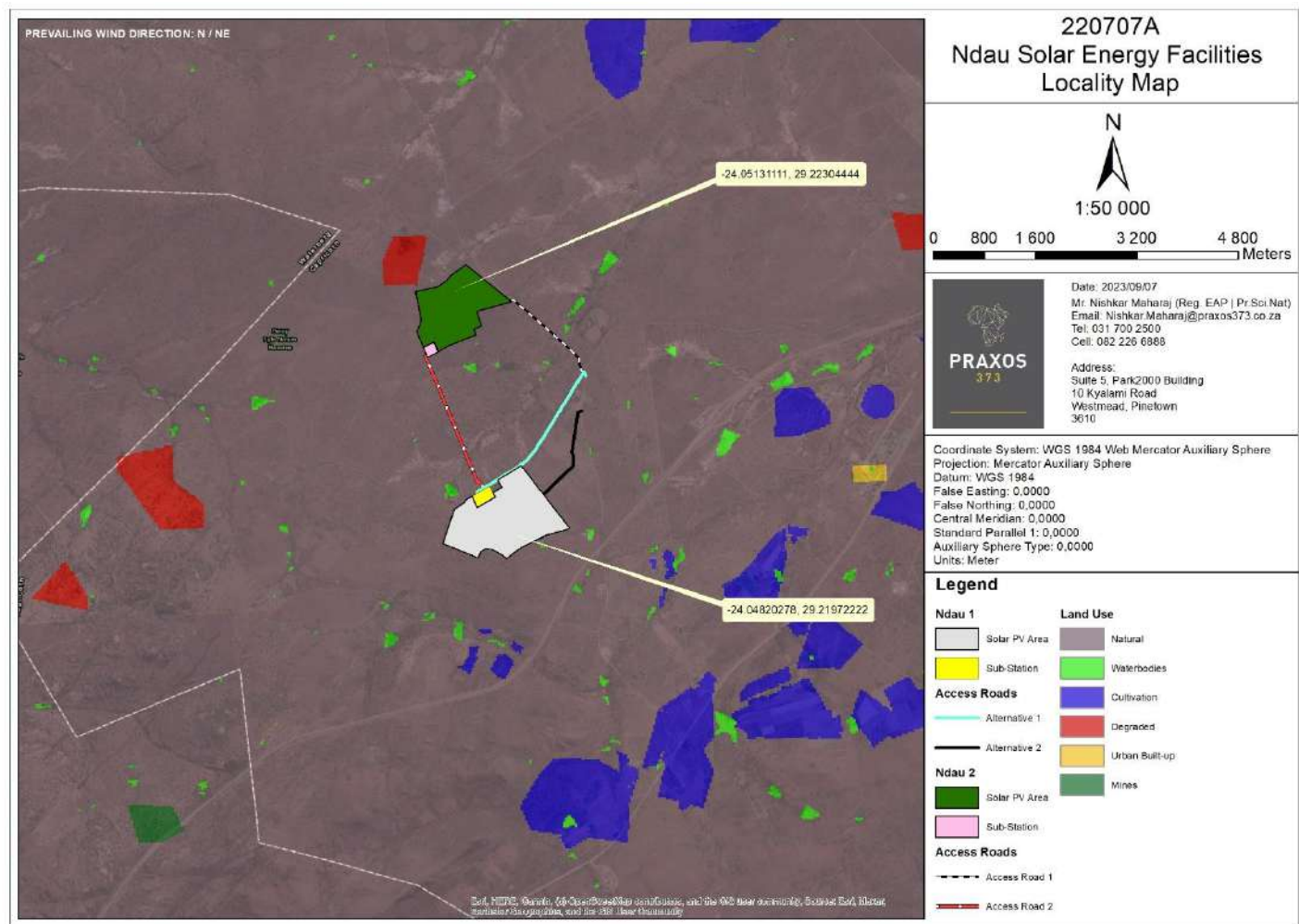


Figure 1 Locality Map of the Proposed Sites

Place	Address	Telephone
Polokwane City Library	71 Hans Van Rensburg Street & Corner Jorissen Street, Polokwane, 0700	Granny Manaka 015 290 2155
Mogalakwena Public Library	Corner of Van Riebeeck Street & Ruiters Road	Refilwe Madisha 015 491 9729

The DSRs are available on:

- <https://www.dropbox.com/sh/ivtm41ci5fuwm7h/AAAD4H0pdt3zeq0ElhZy7jKha?dl=0>
- A CD copy is available upon request. Please contact Richard Myburgh.

PUBLIC PARTICIPATION OFFICE

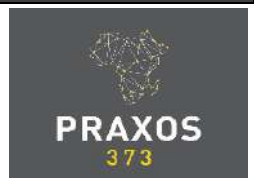
Attention: Richard Myburgh

Tel: 011 453 8727

Email: publicparticipation@praxos373.co.za

31 Saint Margaret Street, Hurlyvale, Edenvale, 1611

The Public Participation Office is open during office hours (08:00 – 17:00) from Monday to Friday, excluding Public Holidays.



BOINGWADIŠO BJA TUMELELO YA TIKOLOGO BJA GO LEKANYETŠA TLHAHLOBO YA GO KGOMA TIKOLOGO MOŠOMONG WO O RULAGANTŠWEGO WA GO KAONEFATŠA MEAGO YA ENETŠI YA ABO NDAU 1 & 2, LEO LE LEGO MMASEPALENG WA SELEGAE WA POLOKWANE LOCAL MUNICIPALITY LE MMASEPALENG WA SELETE WA CAPRICORN, PROBENSENG YA LIMPOPO.

Mo go fanwa ka temošo ya maikemišetšo a Lefelo la Enetši ya Sola la ABO Ndaou 1 (Pty) Ltd, Lefelo la Enetši ya Sola la ABO Ndaou 2 (Pty) Ltd (e lego Baingwadiši) go ngwadišetša Tumelelo ya Tikologo (EA), ka morero wa Tlhahlobo ya go Kgooma Tikologo (S&EIA) tšeo di tlogo go dirwa sammaletee. Boingwadišo bjo bo ikemego obja Tumelelo ya Tikologo bo tla dirwa bakeng sa merero e rulagantšwego ya go kaonefatša ya Lefelo la Enetši ya Sola la ABO Ndaou 1, le 2, leo le lego Mmasepaleng wa Selegae wa Polokwane le Mmasepaleng wa Selete wa Capricorn, kua Probenseng ya Limpopo . Lefapha la Mašoka, Naga le Tikologo (DFFE) ka go Bolaodi bjo Ikemetšego (CA) bakeng sa boingwadišo bja megao ya Sola.

Boingwadišo bo tla dirwa ka go dumelelana le dinyakwa tše di latelago tša molao:

- Molao wa Taolo ya Tikologo ya Boditšhaba, 1998 (Mola 107 wa 1998) (NEMA) le Tlhahlobo ya Kamo ya Tikologo (EIA), 2014 (ka ge e fetotšwe).

MEAGO	GO NGWALA TEMOŠO 1 (GNR 983)	GO NGWALA TEMOŠO 2 (GNR 984)	GO NGWALA TEMOŠO 3 (GNR 985)
Ndaou 1	11, 12, 19, 24, 28 le 56.	1 le 15.	3, 4, 14 le 18.
Ndaou 2	11, 12, 19, 24, 28 le 56.	1 le 15.	3, 4, 14 le 18.

Mongwadiši o kgethile Praxos 373 (Pty) Ltd gore e be Moabi wa Tirelo ya Tlhahlobo ya Tikologo (EAP) yo a ikemetšego gore a dire S&EIA e nyakegago Mogato wa go Tšea Karolo ga Setšhaba (PPP) e le go thekga boingwadišo bjo bo lego ka mo godimo.

LEFELO LA PROTJEKE

Lefelo la protjeke le magareng ga Mmasepalal wa Selegae wa Polokwane le Mmasepala wa Selete sa Capricorn, kua Probenseng ya Limpopo. Lefelo la Enetši ya Sola la ABO Ndaou 1 di kua Karolong 19 Polaseng ya Rietvley No. 13. Lefelo la Enetši ya Sola la ABO Ndaou 2 le kua Karolo ng 5 (Karolwana ya Karolo 2) Polaseng ya Rotterdam No. 12 le Mašaletšeng a Karolo 2 ya Polasa ya Rotterdam No. 12.

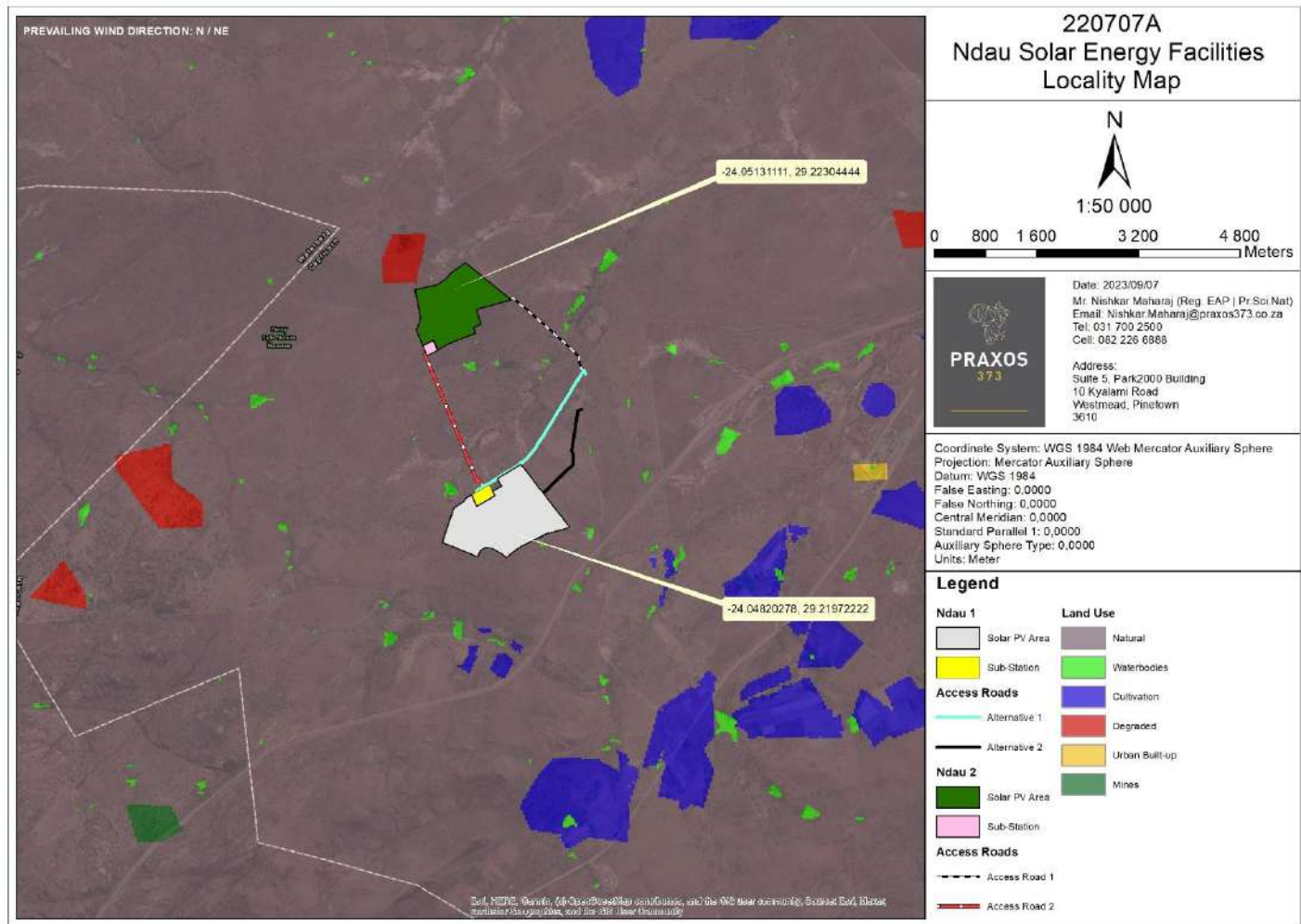
GO TŠEA KAROLO GA SETŠHABA

Protjeke e tsebišwa ka tsela ye. Mekgatlo yeo e Nago le Kgahlego Goba e Kgomegago (I&APs) e laletšwa go ngwadiša go lenaneo la rena la diprotjeke le/goba go ngwala go Pego ya Mathomo ya Mošomo (DSR) yeo e tlogo go hwetšagala gore e ka hlahlobja ke batho bohle go tloga ka **13 September go ya go 16 October 2023** (Matšatši a 30 ntle le matšatši a maikhutšo).

Hle bona lenaneo leo le lego ka mo tlase la gao bontšha mafelo ao DSR e tlogo go hwetšagala gao ona gore e ka bonwa le go ngwala go yona.

Ge e ba o nyaka go ngwadiša o le I&AP, go hwetša tsebišo goba go ngwala go protjeke yeo e šišinywago, hle ikgokaganye le Ofisi ya go Tšea Karolo ga Setšhaba mafelong ao a lego ka mo tlase.

Ditemošo tša go ngwadiša ga Mokgatlo o Kgomegago le wo o nago le kgahlego gore o bolele se sengwe go se se Ngwadilwego go Pego ya Mathomo ya go Kgomega ga Naga di tla dirwa ka morago.



Bona 1 Mmapa wa Mafelo Ao a Šišinywago

Lefelo	Aterese	Founo
Laeprari ya Toropo ya Polokwane	71 Hans Van Rensburg Street & Corner Jorissen Street, Polokwane, 0700	Granny Manaka 015 290 2155
Laeprari ya Batho Bohle ya Mogalakwena	Khoneng ya Seterata sa Van Riebeeck le Ruiters Road	Refilwe Madisha 015 491 9729

DSR e hwetšagala:

- <https://www.dropbox.com/sh/ivtm41ci5fuwm7h/AAAD4H0pdt3zeq0EihZy7jKha?dl=0>
- Khopi ya CD e ka hwetšwa ge o ka e kgopela. Hle ikgokaganye le Richard Myburgh.

OFISI YA GO TŠEA KAROLO GA SETŠHABA

Temošo: Richard Myburgh

Founo: 011 453 8727

Email: publicparticipation@praxos373.co.za

31 Saint Margaret Street, Hurlyvale, Edenvale, 1611

Ofisi ya go Tšea Karolo ga Setšhaba e tla dula e butše dinakong tša mošomo (08:00 – 17:00) go tloga ka Mantaga go fihla ka Labohlano, ntle le Matšatši a Maikhutšo

