

**BASIC ASSESSMENT AND
PUBLIC PARTICIPATION PROCESSES
FOR THE
UPILANGA PV1 AND UPILANGA PV2 AND ASSOCIATED
INFRASTRUCTURE NEAR UPINGTON,
NORTHERN CAPE PROVINCE**

**MEETING NOTES OF FOCUS GROUP MEETING HELD WITH NORTHERN CAPE
DEPARTMENT OF WATER AND SANITATION
HELD ON THURSDAY, 27 AUGUST 2020 AT 14H00
VENUE: MS TEAMS PLATFORM**

Meeting notes prepared by:

Nicolene Venter
Savannah Environmental (Pty) Ltd
E-mail: publicprocess@savannahsa.com

*Please note that these notes are not verbatim, but a summary of the comments submitted at the meeting.
Please address any comments to Savannah Environmental at the above address*

UPILENGA PV1 AND UPILENGA PV2 AND ASSOCIATED INFRASTRUCTURE NEAR UPINGTON, NORTHERN CAPE PROVINCE

LIST OF ABBREVIATIONS / ACRONYMS

BAR	Basic Assessment Report	DWS	Department of Water and Sanitation
FGM	Focus Group Meeting	PV	Photovoltaic
WULA	Water Use Licence Application		

MEETING ATTENDEES

Name	Organisation	Position
Shaun Cloete	Department of Water and Sanitation	Lower Orange Water Management Area
Alexia Hlengani		Water Quality Manager
Poncho	Emvelo Capital Projects (Pty) Ltd	Director
Mrs Arlene Singh	Savannah Environmental	Environmental Assessment Practitioner
Ms Nicolene Venter		Public Participation and Social Consultant

Please refer to **Appendix A** for proof of attendance.

A narrated presentation, in English, of the Upilanga PV1 and Upilanga PV2 was distributed via e-mail to the attendees prior to the Focus Group Meeting (FGM). The attendees were also directed to the stakeholder engagement platform where the presentation can be accessed and/or downloaded.

Attendees were requested to register their attendance by introducing themselves by submitting their names and roles on the chat function of MS Teams, as well as a verbal introduction to the project team. The same introductory process was followed by the team members.

Nicolene Venter welcomed all on the on-line platform and informed the attendees that comments can be submitted on the chat function and verbally during the meeting and advised that any additional comments after the meeting can be submitted via e-mail, WhatsApp or SMS to the public participation office.

Arlene Singh provided a summary of the narrated presentation to the attendees and opened the floor for questions and comments. It is important to mention that as the attendees are the commenting officials for the DWS, emphasis during the presentation was placed on environmental sensitivities associated with secondary alluvial water courses and cumulative impacts.

A copy of the slides presented during the virtual meeting is attached as **Appendix B**.

DISCUSSION SESSION

Question / Comment	Response
Shaun Cloete informed the project team that, as commenting officials for the DWS, their comments submitted at the FGM must be recorded as official comments on the BAR.	The team acknowledged this approach, and the meeting notes will serve as written comments submitted on the BAR.
Shaun Cloete enquired that in terms of the water requirements for the construction of the PVs, whether both PVs will start construction at the same time or will it be a phased approach.	Arlene Singh informed the attendees that it is envisaged that construction will be a phased approach i.e. complete construction of one PV before commencing with the second PV.
Shaun Cloete enquires that although it is believed that not a high volume of water will be required during the operation phase of the PVs but during the construction phase where will the water be sourced from.	Arlene Singh replied that for the construction phase, the developer will purchase water from the local municipality and trucked into the construction site.
Shaun Cloete asked whether same approach for water supply will be taken during the operational phase of the PVs	Arlene Singh confirmed that the same approach will be followed and informed the Department that no pipelines are planned or considered as an infrastructure for the PV facilities.
Shaun Cloete asked for clarification purposes whether these to PV facilities are located close to that of the authorised Karoshoek.	Arlene Singh confirmed that the proposed PV facilities are located approximately 2.6 kms south of the authorised Karoshoek Solar Park.
Shaun Cloete enquired that in terms of the drainage lines, he recalls that during the presentation access road and PV structures were mentioned and enquired whether these infrastructures will impede on the flow of the drainage lines.	Arlene Singh replied that the access road is only associated with PV1 and this will intrude on the secondary water course. The access road for PV2 and some of the PV panel area might impact on the secondary alluvial water.
Shaun Cloete ask for confirmation whether the 50m – 100m buffer is being proposed around the high sensitivity water courses identified.	<p>Arlene Singh replied that the water courses were measured by the specialist and it was found to be of moderate significance and not of high significance. There are a few pans in the area, and these are located more than 500m away from the PV facility.</p> <p>The environmental sensitivity maps as included in the BARs were presented to inform the attendees in more detail regarding the water courses and pans locations.</p>
Shaun Cloete confirm that with the information received at the FGM it is believed that applications for Section 21c & i seems to be	Arlene Singh confirmed that it is the applicant's intention to submit the required water use licence applications.

the only water use triggered by these applications.	
Shaun Cloete commented that it is believed that whether a full WULA or a General Authorisation will be required will be determined by impacts of the activities on the drainage lines. It is believed that the impacts will be included in the risk assessment where the impacts determined as significantly low medium or high will guide the applicable application.	Arlene Singh acknowledged the information provided.
Shaun Cloete enquired how will sewage on sight be handled i.e. septic tanks, connection to local municipality's sewage infrastructure or the development of a treatment plant on site. It is important that this information be made available as it would impact the determination of a water use authorisation	Arlene Singh responded that the information is included in the BAR but that the team will provide feedback in the meeting notes to this question. Post-meeting note: All sewage waste will be collected by a contractor and will be disposed of at a licensed waste disposal site during the construction phase. This service will be arranged with the municipality when required during the operational phase.
Shaun Cloete ask for clarification purposes whether there is any other wastewater associated throughout the project live.	Arlene Singh responded that in terms of the PV facilities no other waste streams are associated with the PV facilities.
Alexia Hlengani enquired where will potable water be sourced from i.e. trucked in and enquire whether abstraction will be done from the Orange River or drilling bore holes.	Arlene Singh confirms that there will be no abstraction from the Orange River and no drilling of boreholes. Potable water will be trucked in.

CLOSURE

Nicolene Venter thanked the attendees for their valuable inputs into the Basic Assessment processes. The meeting was closed at 14h45.

Appendix A

Attendance Register

APPENDIX A

ATTENDANCE REGISTER

Upilanga PV1 and PV2 Developments: F... Chat Files **Details** 3 more + Join Close

Cancel meeting Time zone: (UTC+02:00) Harare, Pretoria Meeting options

Upilanga PV1 and PV2 Developments: Focus Group Meeting

H HlenganiA@dws.gov.za **C** cloetes@dws.gov.za **AS** Arlene Singh **P** Pancho@emvelo.co.za

Optional: **RB** Ronald Baloyi

Aug 27, 2020 2:00 PM

Aug 27, 2020 3:00 PM 1h All day

Suggested: No suggestions available.

Does not repeat

MS Teams

Tracking

NV Nicolene Venter Organizer

H HlenganiA@dws.gov.za Accepted

AS Arlene Singh Accepted

C cloetes@dws.gov.za Unknown

P Pancho@emvelo.co.za Unknown

Optional

RB Ronald Baloyi Unknown

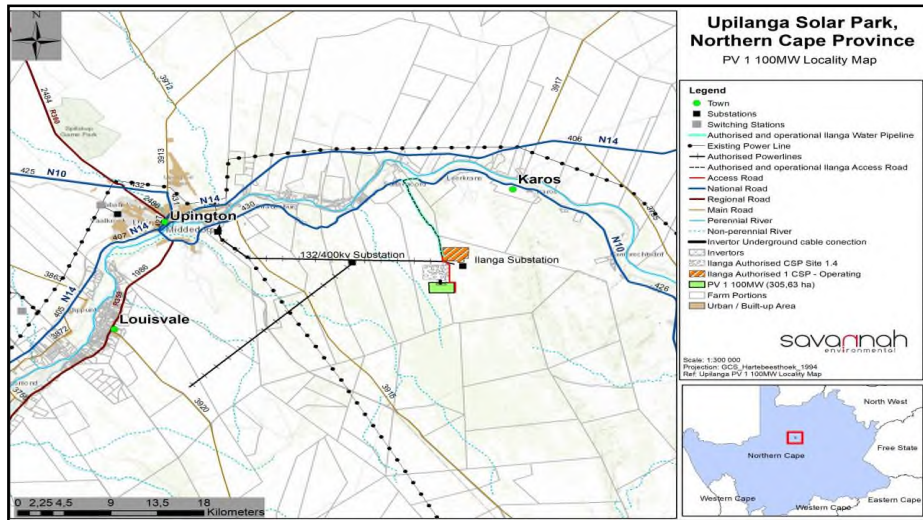
Appendix B Presentation

Upilanga PV1 & PV2 and associated infrastructure, Dawid Kruiper LM, Northern Cape Province

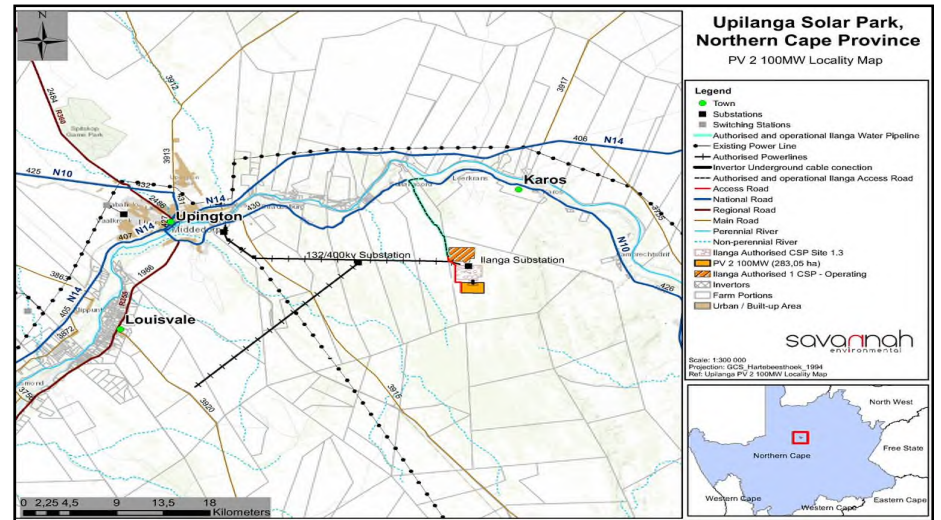
Public Participation Presentation
August 2020

AGENDA

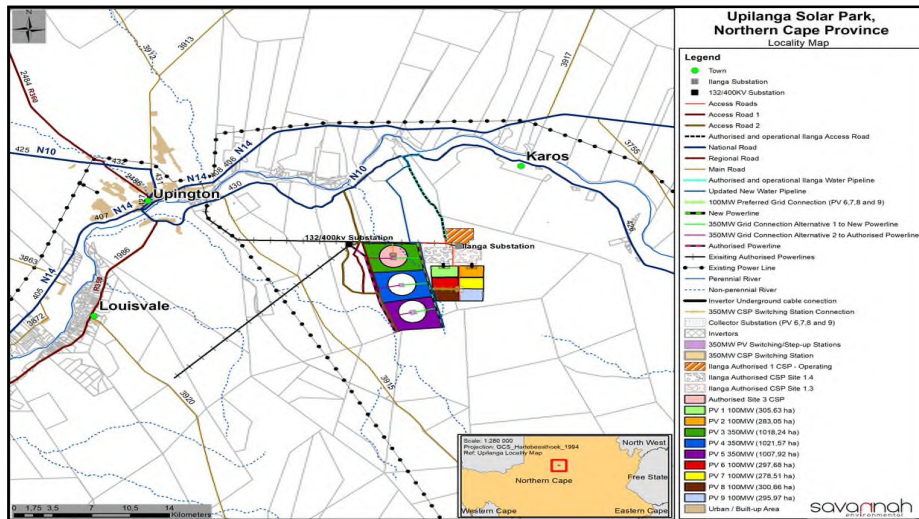
- Welcome
- Introduction of attendees
- Meeting Conduct
- Purpose of the Meeting
- Introduction and Project Description
- Maps
- Results



3



4



5

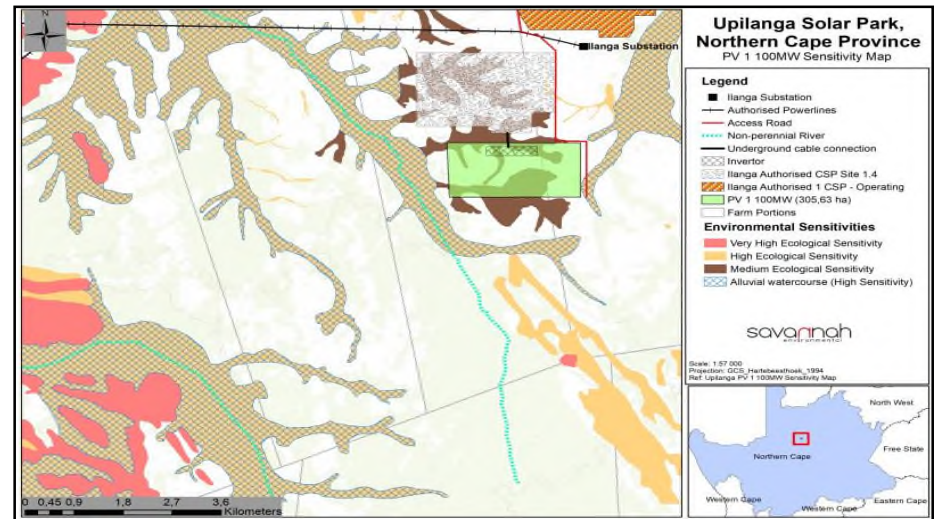
SPECIALIST STUDIES

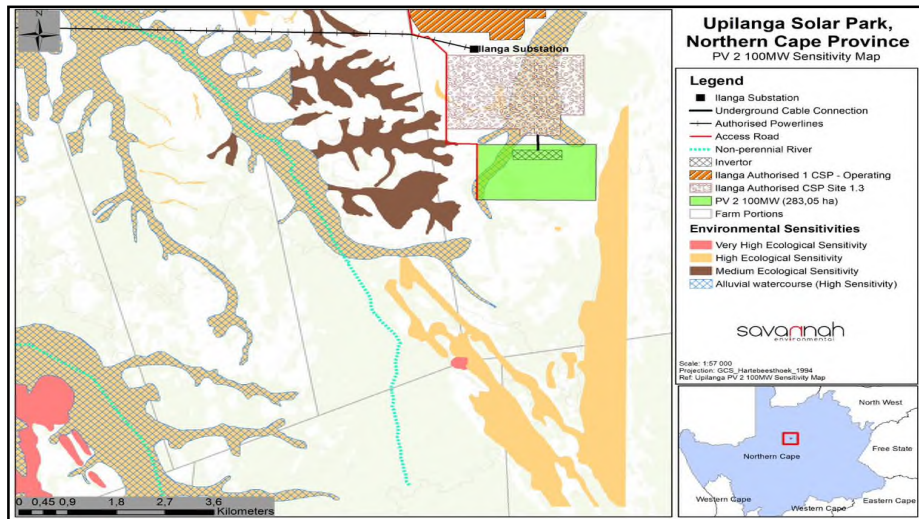
- The potential environmental impacts associated with Upilanga PV1 identified and assessed through the BA process include:
 - » Impacts on ecology, flora and fauna.
 - » Impacts on avifauna.
 - » Impacts on aquatic resources.
 - » Impacts to soils, land types and agricultural potential.
 - » Impacts on heritage resources, including archaeology and palaeontology.
 - » Visual impacts on the landscape as a result of the facility.
 - » Positive and negative social impacts.

6

ENVIRONMENTAL IMPACTS/SENSITIVITIES IDENTIFIED

Basic Assessment Specialist Studies	Significance of Impacts (After Mitigation)
Ecology Impact Assessment	Low-Medium
Aquatic Impact Assessment	Low
Soil and Agricultural Impact Assessment	Low
Heritage Impact Assessment	Low
Visual Impact Assessment	Low
Social Impact Assessment	Low
Avifauna Impact Assessment	Low- Medium





9

WHO TO CONTACT FOR FURTHER INFORMATION

Savannah Environmental (Pty) Ltd
Nicolene Venter

Email: publicprocess@savannahsa.com

PO Box 148, Sunninghill, 2157

Tel: 011 656 3237

Fax: 086 684 0547

www.savannahSA.com

savannah
environmental

10