

Appendix C8:

DFFE Correspondence



Arlene Singh <arlene@veersgroup.com>

RE: 12/12/20/873/AM2 - Part 2 EA amendment acknowledgement

Sindiswa Dlomo <SDLOMO@dffe.gov.za>

Thu, Nov 10, 2022 at 10:47 AM

To: Arlene Singh <arlene@veersgroup.com>

Cc: Stephnie Kot <stephnie.kot@aced.co.za>, Norman Chetsanga <norman@veersgroup.com>, Justin Jacobs <justin@veersgroup.com>, Thulisile Nyalunga <TNYALUNGA@dffe.gov.za>, Thabile Sangweni <TSANGWENI@dffe.gov.za>

Dear Ms Singh

APPLICATION FOR AMENDMENT OF ENVIRONMENTAL AUTHORISATION ISSUED ON 19 NOVEMBER 2007: PROPOSED CONSTRUCTION OF THE 765KV GAMMA SUBSTATION OF THE FARMS UIT VLUGT FONTEIN NO.265 AND SCHIETKUIL NO.3 IN THE PIXELY KA SEME AND CENTRAL KAROO DISTRICT MUNICIPALITIES; WESTERN CAPE PROVINCE AND NORTHERN CAPE PROVINCE

The application for amendment of the Environmental Authorisation for the abovementioned project received by the department on 16 September 2022, our telephonic discussion on 03 October 2022, the request for additional information dated 06 October 2022, and the additional information received on 25 October 2022 has reference.

Please note that your application for amendment of the environmental authorisation falls within the ambit of amendments to be applied for in terms of Part 2 of Chapter 5 of the Environmental Impact Assessment Regulations, 2014, as amended. You are therefore referred to Regulation 32 of the EIA Regulations, 2014 as amended.

Further note that in terms of Regulation 45 of the EIA Regulations, 2014, as amended, this application will lapse if the applicant fails to meet any of the timeframes prescribed in terms of these Regulations.

Therefore taking the above into consideration, kindly note that the submission date for the final amendment motivation report which has been consulted on is **14 February 2023**.

Yours sincerely,

Ms Sindiswa (Sindi) Dlomo**Designation: Deputy Director: National Infrastructure Projects****Chief Directorate: Integrated Environmental Authorisations****Department of Forestry, Fisheries and the Environment****Tel: 012 399 9390****Cell: 076 940 5716****Email: SDlomo@environment.gov.za**

"Please contact the case officer for any project related enquiries (see contact details above)"

From: Arlene Singh <arlene@veersgroup.com>
Sent: Tuesday, 25 October 2022 14:39
To: Sindiswa Dlomo <SDLOMO@dffe.gov.za>; Thulisile Nyalunga <TNYALUNGA@dffe.gov.za>
Cc: Stephnie Kot <stephnie.kot@aced.co.za>; Norman Chetsanga <norman@veersgroup.com>; Justin Jacobs <justin@veersgroup.com>
Subject: Re: 12/12/20/873/AM2 - Request for additional information

Good afternoon Sindiswa and Thulisile,

I trust that you are both well.

Kindly find attached the response to the request for additional information for the abovementioned Part 1 Amendment Application. Kindly confirm receipt of this email.

Please do not hesitate to contact me should you require any further information or clarity. Thank you.

Kind regards,



On Thu, Oct 6, 2022 at 3:23 PM Sindiswa Dlomo <SDLOMO@dffe.gov.za> wrote:



**forestry, fisheries
& the environment**

Department:
Forestry, Fisheries and the Environment
REPUBLIC OF SOUTH AFRICA

Private Bag X 447 · PRETORIA · 0001 · Environment House · [473 Steve Biko Road](#), Arcadia · PRETORIA

DEA Reference: 12/12/20/873/AM2

Enquiries: Ms Thulisile Nyalunga

Telephone: (012) 399 9405 **E-mail:** TNyalunga@dffe.gov.za

Ms Arlene Singh

Nala Environmental (Pty) Ltd

Waterfall, Cnr. Old Pretoria Main Road & Maxwell Drive

Midrand

JOHANNESBURG

2090

Cellphone Number: 084 2777 074

Email Address: arlene@veersgroup.com

PER MAIL / EMAIL

Dear Arlene Singh

APPLICATION FOR AMENDMENT OF ENVIRONMENTAL AUTHORISATION ISSUED ON 19 NOVEMBER 2007 PROPOSED CONSTRUCTION OF THE 765KV GAMMA SUBSTATION OF THE FARMS UIT VLUGT FONTEIN NO.265 AND SCHIETKUIL NO.3 IN THE PIXELY KA SEME AND CENTRAL KAROO DISTRICT MUNICIPALITIES; WESTERN CAPE PROVINCE AND NORTHERN CAPE PROVINCE

The application for amendment of the Environmental Authorisation received on 16 September 2022, our telephonic discussion on 03 October 2022 and your subsequent email dated 03 October 2022 has reference.

The department has evaluated your application for amendment, and upon review of the information submitted and taking into consideration that the EA in question was issued more than 10 years ago, the department currently does not have enough information to make an informed decision on the whether the proposed amendment will fall under the ambits of a Part 1 or Part 2 process as outlined in Chapter 5.

Your application for an amendment to the EA states:

The proposed 132kV/400kV yard and 400kV OHL turn-ins fall within the scope of the current EA. However – based on further technical analysis and design – it has been identified that the layout of the authorised infrastructure will need to be updated to accommodate the updated configuration/layout now proposed to be implemented. The updated layout falls within the scope and footprint of what was originally assessed in the original EIA process.

It is understood that your wish to reconfigure and or realign how the Droerivier- Hydra No. 2" 400kV OH will turn-in to the second phase of the Gamma substation. However, if you look at the new start and end points, and the realignment of the proposed reconfigurations, it is clear that these are significantly different from what was presented in the final EIAr dated August 2007.

It is clear, based on the review of the EIA dated August 2007, that a lot of emphases was placed on the substation and not on the turn in lines and associated impacts which were deemed as associated infrastructure according to the RoD. As such, this makes it difficult for the department determine with certainty that the areas where the proposed reconfigurations will occur (starting point extending to the substation connection point) were assessed or formed part of the assessed area as per the final EIA, especially taking into consideration that the three 400KV Droerivier – Hydra lines were already existing when the application for authorisation was lodged, and the decision was issued for the Gamma substation.

Taking the above into consideration, you are therefore required to furnish this department with proof which will support your assertions that the areas where the powerline will be reconfigured formed part of the assessed area as indicated in the EIA dated August 2007 and the assessment covered the impacts associated with powerline infrastructure and not just the substation footprint.

In addition to the above you are also required to provide a Map which depict the proposed powerline reconfigurations in relation to three (03) existing 400kV powerlines, the length of the sections of powerline to be reconfigured, and their respective geographic coordinates (the start, middle and end points of both the east and west reconfiguration).

The above requested information must be submitted on or before the 25 October 2022. The requested information must be sent via email to myself and Ms Thulisile Nyalunga on TNyalunga@dffe.gov.za

Upon receipt of the above-mentioned information, this Department will then confirm the process to be followed in relation to this proposed amendment.

Yours sincerely,

Ms Sindiswa (Sindi) Dlomo

Designation: Deputy Director: National Infrastructure Projects

Chief Directorate: Integrated Environmental Authorisations

Department of Forestry, Fisheries and the Environment

Tel: 012 399 9390

Cell: 076 940 5716

Email: SDlomo@environment.gov.za

"Please contact the case officer for any project related enquiries (see contact details above)"

From: Arlene Singh <arlene@veersgroup.com>

Sent: Friday, 16 September 2022 11:58

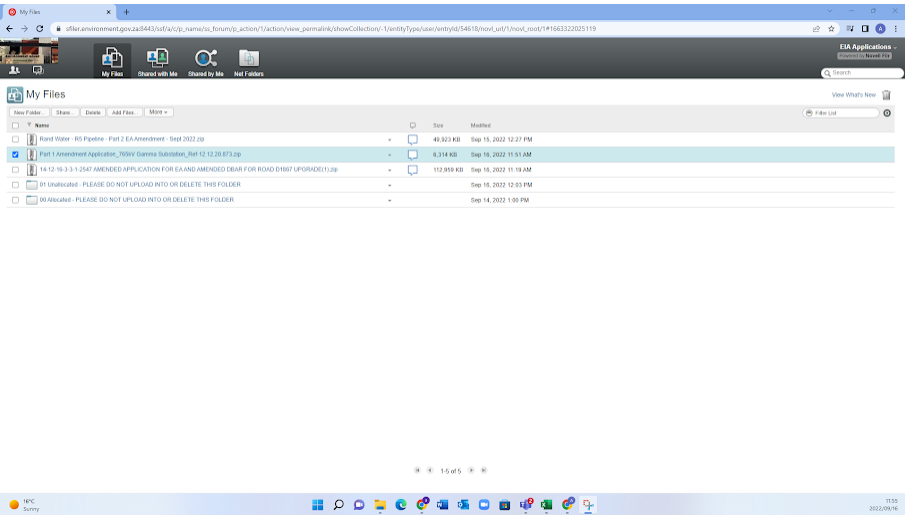
To: EIA Applications <EIAApplications@dffe.gov.za>

Cc: Coenrad Agenbach <CAGENBACH@dffe.gov.za>; Stephnie Kot <stephnie.kot@aced.co.za>; Norman Chetsanga <norman@veersgroup.com>; Justin Jacobs <justin@veersgroup.com>
Subject: Proof of Upload- Part 1 Amendment Application for the 765kV Gamma Substation_ Ref:12/12/20/873

Good day,

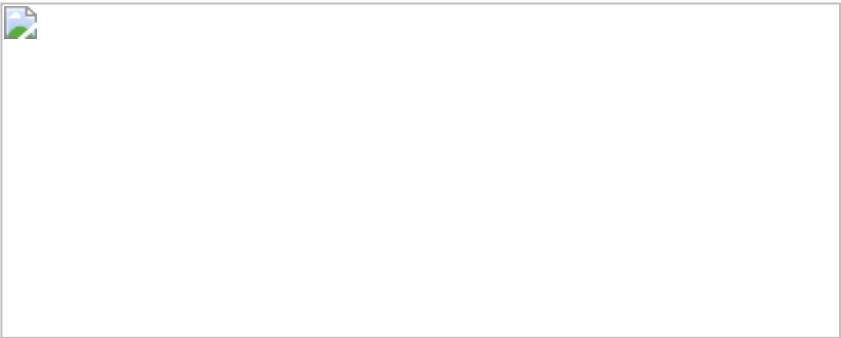
I trust that this email finds you well.

Please see below proof of upload of the Part 1 Amendment Application for the Gamma Substation.



Please do not hesitate to contact me if you have any queries. Kindly confirm receipt of the application and appendices. Thank you.

Kind regards,





Arlene Singh <arlene@veersgroup.com>

RE: 12/12/20/873/AM2 - Request for additional information

Sindiswa Dlomo <SDLOMO@dffe.gov.za>

Thu, Oct 6, 2022 at 3:23 PM

To: "arlene@veersgroup.com" <arlene@veersgroup.com>

Cc: EIA Applications <EIAApplications@dffe.gov.za>, Thulisile Nyalunga <TNYALUNGA@dffe.gov.za>



**forestry, fisheries
& the environment**

Department:
Forestry, Fisheries and the Environment
REPUBLIC OF SOUTH AFRICA

Private Bag X 447 · PRETORIA · 0001 · Environment House · 473 Steve Biko Road, Arcadia · PRETORIA

DEA Reference: 12/12/20/873/AM2

Enquiries: Ms Thulisile Nyalunga

Telephone: (012) 399 9405 **E-mail:** TNyalunga@dffe.gov.za

Ms Arlene Singh

Nala Environmental (Pty) Ltd

Waterfall, Cnr. Old Pretoria Main Road & Maxwell Drive

Midrand

JOHANNESBURG

2090

Cellphone Number: 084 2777 074

Email Address: arlene@veersgroup.com

PER MAIL / EMAIL

Dear Arlene Singh

APPLICATION FOR AMENDMENT OF ENVIRONMENTAL AUTHORISATION ISSUED ON 19 NOVEMBER 2007 PROPOSED CONSTRUCTION OF THE 765KV GAMMA SUBSTATION OF THE FARMS UIT VLUGT FONTEIN NO.265 AND SCHIETKUIL NO.3 IN THE PIXELY KA SEME AND CENTRAL KAROO DISTRICT MUNICIPALITIES; WESTERN CAPE PROVINCE AND NORTHERN CAPE PROVINCE

The application for amendment of the Environmental Authorisation received on 16 September 2022, our telephonic discussion on 03 October 2022 and your subsequent email dated 03 October 2022 has reference.

The department has evaluated your application for amendment, and upon review of the information submitted and taking into consideration that the EA in question was issued more than 10 years ago, the department currently does not have enough information to make an informed decision on whether the proposed amendment will fall under the ambits of a Part 1 or Part 2 process as outlined in Chapter 5.

Your application for an amendment to the EA states:

The proposed 132kV/400kV yard and 400kV OHL turn-ins fall within the scope of the current EA. However – based on further technical analysis and design – it has been identified that the layout of the authorised infrastructure will need to be updated to accommodate the updated configuration/layout now proposed to be implemented. The updated layout falls within the scope and footprint of what was originally assessed in the original EIA process.

It is understood that your wish to reconfigure and or realign how the Droerivier- Hydra No. 2” 400kV OH will turn- in to the second phase of the Gamma substation. However, if you look at the new start and end points, and the realignment of the proposed reconfigurations, it is clear that these are significantly different from what was presented in the final EIAR dated August 2007.

It is clear, based on the review of the EIAR dated August 2007, that a lot of emphases was placed on the substation and not on the turn in lines and associated impacts which were deemed as associated infrastructure according to the RoD. As such, this makes it difficult for the department determine with certainty that the areas where the proposed reconfigurations will occur (starting point extending to the substation connection point) were assessed or formed part of the assessed area as per the final EIAR, especially taking into consideration that the three 400KV Droerivier – Hydra lines were already existing when the application for authorisation was lodged, and the decision was issued for the Gamma substation.

Taking the above into consideration, you are therefore required to furnish this department with proof which will support your assertions that the areas where the powerline will be reconfigured formed part of the assessed area as indicated in the EIA dated August 2007 and the assessment covered the impacts associated with powerline infrastructure and not just the substation footprint.

In addition to the above you are also required to provide a Map which depict the proposed powerline reconfigurations in relation to three (03) existing 400kV powerlines, the length of the sections of powerline to be reconfigured, and their respective geographic coordinates (the start, middle and end points of both the east and west reconfiguration).

The above requested information must be submitted on or before the 25 October 2022. The requested information must be sent via email to myself and Ms Thulisile Nyalunga on TNyaluga@dffe.gov.za

Upon receipt of the above-mentioned information, this Department will then confirm the process to be followed in relation to this proposed amendment.

Yours sincerely,

Ms Sindiswa (Sindi) Dlomo

Designation: Deputy Director: National Infrastructure Projects

Chief Directorate: Integrated Environmental Authorisations

Department of Forestry, Fisheries and the Environment

Tel: 012 399 9390

Cell: 076 940 5716

Email: SDlomo@environment.gov.za

"Please contact the case officer for any project related enquiries (see contact details above)"

From: Arlene Singh <arlene@veersgroup.com>

Sent: Friday, 16 September 2022 11:58

To: EIA Applications <EIAApplications@dfpe.gov.za>

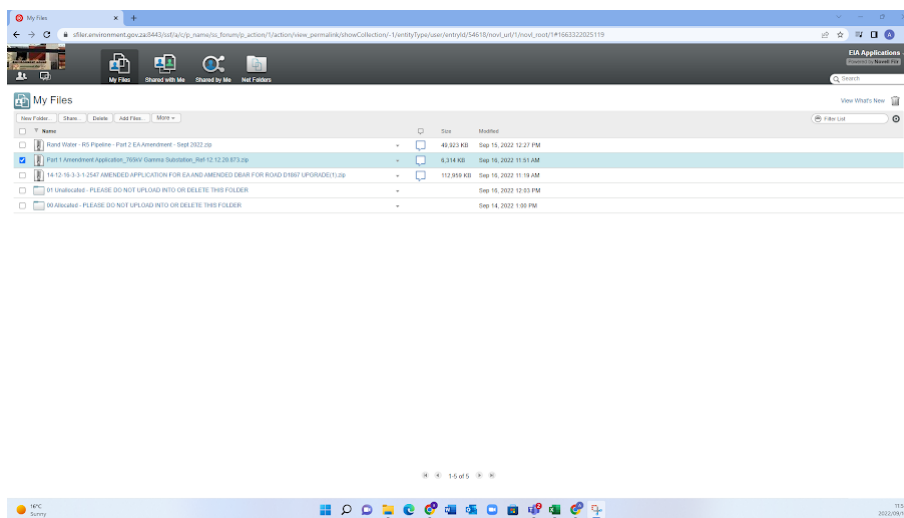
Cc: Coenrad Agenbach <CAGENBACH@dfpe.gov.za>; Stephnie Kot <stephnie.kot@aced.co.za>; Norman Chetsanga <norman@veersgroup.com>; Justin Jacobs <justin@veersgroup.com>

Subject: Proof of Upload- Part 1 Amendment Application for the 765kV Gamma Substation_ Ref:12/12/20/873

Good day,

I trust that this email finds you well.

Please see below proof of upload of the Part 1 Amendment Application for the Gamma Substation.



Please do not hesitate to contact me if you have any queries. Kindly confirm receipt of the application and appendices. Thank you.

Kind regards,



ARLENE SINGH
DIRECTOR



+27 84 277 7074

arlene@veersgroup.com

<https://www.veersgroup.com/>

IMPORTANT: The contents of this email and any attachments are confidential. They are intended for the named recipient(s) only. If you have received this email by mistake, please notify the sender immediately and do not disclose the contents to anyone or make copies thereof.



NALA
ENVIRONMENTAL
CONSULTING FIRM

25 October 2022

for Attention: Chief Director: Integrated Environmental Authorisations
Department of Forestry, Fisheries and the Environment
Environment House
473 Steve Biko Road
Arcadia
Pretoria
0001

APPLICATION FOR AMENDMENT OF ENVIRONMENTAL AUTHORISATION ISSUED ON 19 NOVEMBER 2007 FOR PROPOSED CONSTRUCTION OF THE 765KV GAMMA SUBSTATION ON THE FARMS UIT VLUGT FONTEIN NO.265 AND SCHIETKUIL NO.3 IN THE PIXELY KA SEME AND CENTRAL KAROO DISTRICT MUNICIPALITIES; WESTERN CAPE PROVINCE AND NORTHERN CAPE PROVINCE (OFFE REF.: 12/12/20/873/AM2)

Dear Ms Dlomo and Ms Nyalunga,

The submission of the Application for Amendment of the Environmental Authorisation received on the 16 September 2022, telephonic discussion on the 03 October 2022, email dated 03 October 2022 and the request for additional information received on the 06 October 2022 has reference.

Following a review of the EIAr dated August 2007 and all associated documentation including the specialist assessments and mapping, it is evident that although the EIAr (2007) makes reference to the future turn-in's of the 400kV powerline, the report remains vague on the assessment of the turn-in's specific co-ordinates (start, middle and end). The EIAr and associated specialist assessments considered a broader study area, and do not define a specific corridor for the 400kV turn-in of the Droerivier-Hydra 2 Overhead Powerline. The EIAr does however clearly contemplate the development of up to six 400kV turn-in OHLs, to be developed as needed based on electricity demand, as described in Section 4.3.1.4 of the EIAr:

4.3.1.4 Power out

Power out of the sub-station is fed into the 765 kV outgoing transmission lines, that start from large steel terminal towers about 43 m outside the perimeter fence. There will initially be two feeds going out which will be increased to a total of five, as the capacity of the sub-station is increased to cater for the increasing demand for power from the areas being supplied.

The Gamma Sub-station makes provision for six 400 kV feeder lines going out that can feed into the existing 400 kV power grid. Three of these feeds will be commissioned during the initial construction phase of the work. Three will be added later as the demand for power increases and the feed to the 400 kV grid has to be increased proportionately.

The EIAr contemplated a total footprint of 172 ha, with the Gamma Substation occupying just 60ha of this area. This suggests that the broader footprint of the substation and associated infrastructure was considered in the assessment. See below extract from page 16 of the EIAr:



+27 84 277 7074



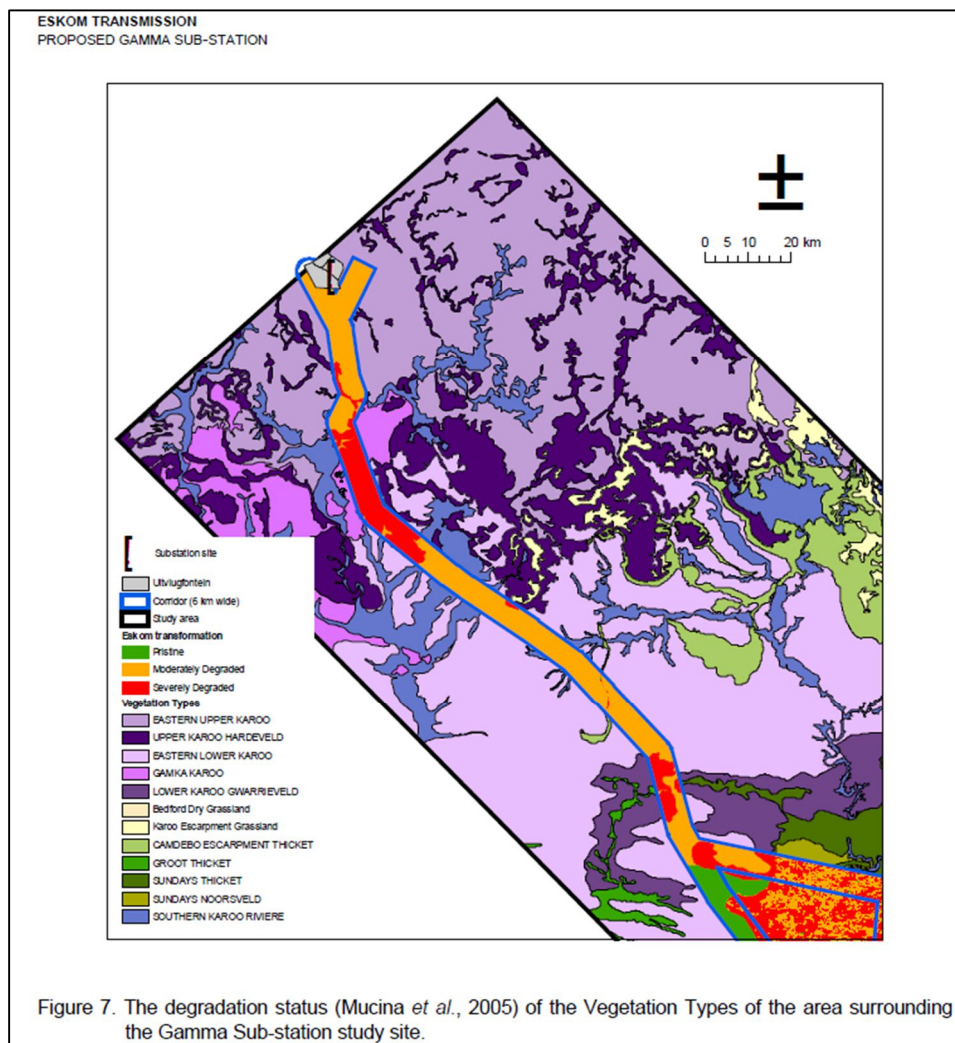
Unit 261, Kikuyu Waterfall,
Midrand, Johannesburg, 20290



The proposed Gamma Sub-station will cover a relatively large area. Eskom is planning to purchase an area that is approximately 1,136 m by 1,540 m (approximately 172 ha) on which the facility will be built. In addition, a small corridor (approximately 400 m x 2,000 m, an area of 80 ha) will be used for an access road to the R63. When finally completed, the sub-station itself will cover about 1,290 m x 465 m (approximately 60 ha) (when measured in terms of the outer perimeter lines of the terraces and security fence). There will also be turn-in lines from the existing 400 kV lines to the sub-station. These turn-in lines will require their own servitudes.

Eskom holds existing general servitude rights for the development of the 400kV powerlines on the affected properties.

It is also evident that the EIA and associated specialist studies considered a broad study area that encompassed the properties concerned (and the surrounding area) and were not limited to a specific, defined footprint or corridor. For example, the map below – extracted from the Vegetation Assessment report (Page 16 of the Vegetation Assessment) included with the EIA – illustrates the extensive study area contemplated by the specialist team. The proposed MTS yard and 400kV OHL turn-ins fall within the broader study area" and "corridor (6km wide)":





NALA
ENVIRONMENTAL
CONSULTING FIRM

The existing EA, read together with the EIA, clearly contemplate and provide for the development of up to six 400kV OHL turn-ins within the assessment area, however it is regrettable that the EIA (2007) does not describe or illustrate this with more specificity. Unfortunately, the only information we have at our disposal is that contained in the EIA (2007) and associated Vegetation Assessment, and we are not able to furnish the Department with any further information in this regard.

As requested by the Department, a map depicting the proposed powerline reconfigurations in relation to the three existing 400kV powerlines, the length of the sections of powerline to be reconfigured, and their respective geographic coordinates (the start, middle and end points of the reconfiguration), is attached as Annexure A.

For the sake of completeness we also note that following liaison with Eskom, it is unclear if there is a separate EIA or Environmental Authorisation for the 400kV Droeriver- Hydra 2 Overhead Powerline as this powerline had been in existence and in operation at the time that the EIA was submitted in 2007 and therefore we have been unable to locate this EIA, related EA reference number or pursue an Amendment Application related to this powerline that would realise its re-alignment or turn-in to the Gamma Substation as Eskom had originally planned and as discussed in the EIA (2007). It may be possible that the 400kV OHLs were constructed prior to the existence of the EIA Regulations, however this cannot be confirmed.

The applicant requests that the Department consider the application for the amendment related to the layout pertaining to the Gamma Substation yard and proposed 400kV turn-in's (as per the assessed footprint in the EIA (2007) and authorised as per DFFE Ref: 12/12/20/873), and grant approval for the layout of the substation and 400kV OHL turn-in lines or part thereof.

Should the Department be unable to grant approval for the requested amendment (or part thereof), the Department is kindly requested to advise on the best approach to be followed in order to obtain the requisite environmental authorisation and approved layout for the proposed infrastructure.

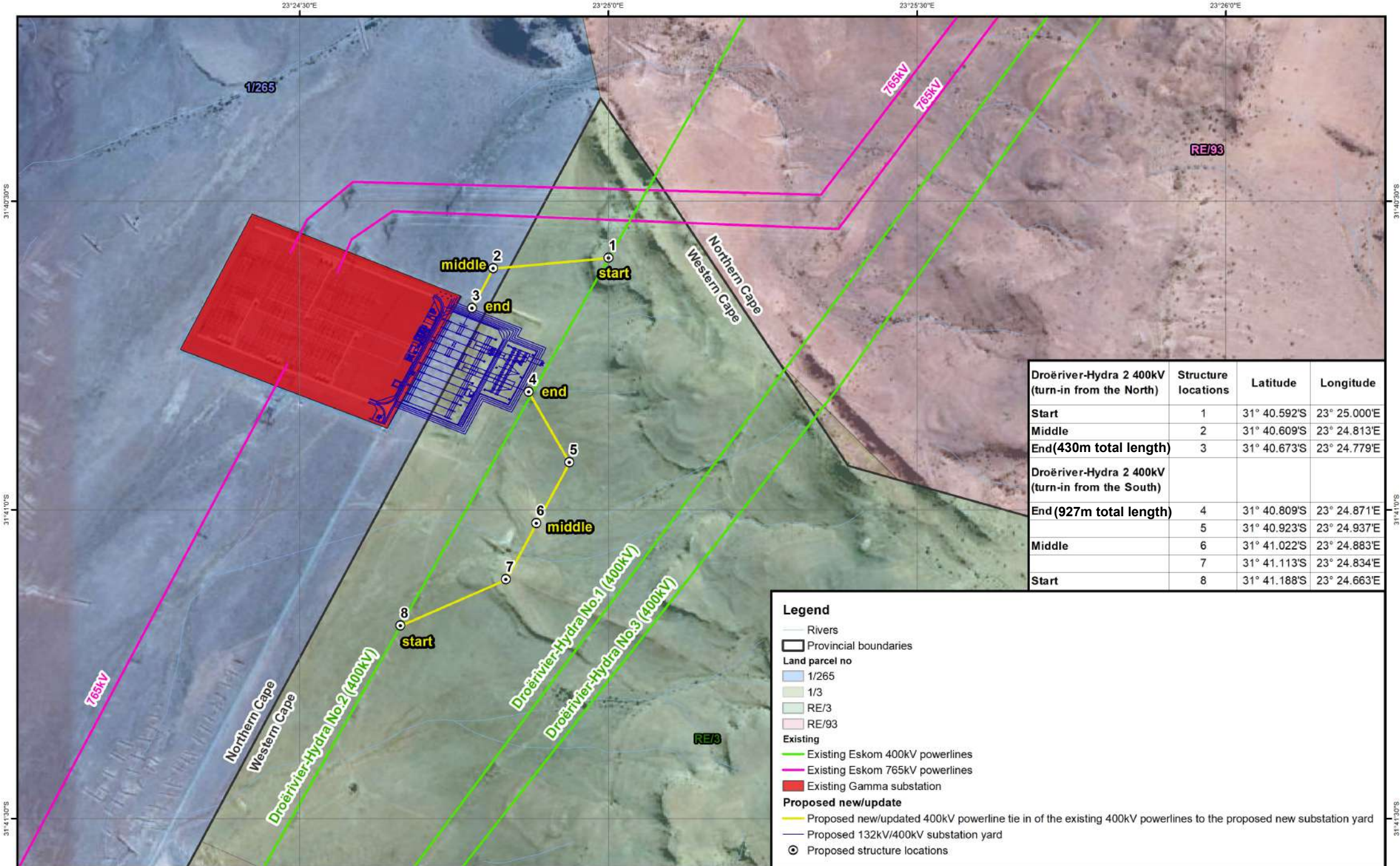
Please do not hesitate to contact us should you have any queries. Thank you.

Kind Regards
ARLENE SINGH
NALA ENVIRONMENTAL
(arlene@veersgroup.com)



NALA
ENVIRONMENTAL
CONSULTING FIRM

ANNEXURE A MAP



Legend

- Rivers
- Provincial boundaries
- Land parcel no
 - 1/265
 - 1/3
 - RE/3
 - RE/93
- Existing
 - Existing Eskom 400kV powerlines
 - Existing Eskom 765kV powerlines
 - Existing Gamma substation
- Proposed new/update
 - Proposed new/updated 400kV powerline tie in of the existing 400kV powerlines to the proposed new substation yard
 - Proposed 132kV/400kV substation yard
 - Proposed structure locations



Arlene Singh <arlene@veersgroup.com>

RE: 12/12/20/873/AM2 - Request for additional information

Sindiswa Dlomo <SDLOMO@dffe.gov.za>

Thu, Oct 6, 2022 at 3:23 PM

To: "arlene@veersgroup.com" <arlene@veersgroup.com>

Cc: EIA Applications <EIAApplications@dffe.gov.za>, Thulisile Nyalunga <TNYALUNGA@dffe.gov.za>



**forestry, fisheries
& the environment**

Department:
Forestry, Fisheries and the Environment
REPUBLIC OF SOUTH AFRICA

Private Bag X 447 · PRETORIA · 0001 · Environment House · 473 Steve Biko Road, Arcadia · PRETORIA

DEA Reference: 12/12/20/873/AM2

Enquiries: Ms Thulisile Nyalunga

Telephone: (012) 399 9405 **E-mail:** TNyalunga@dffe.gov.za

Ms Arlene Singh

Nala Environmental (Pty) Ltd

Waterfall, Cnr. Old Pretoria Main Road & Maxwell Drive

Midrand

JOHANNESBURG

2090

Cellphone Number: 084 2777 074

Email Address: arlene@veersgroup.com

PER MAIL / EMAIL

Dear Arlene Singh

APPLICATION FOR AMENDMENT OF ENVIRONMENTAL AUTHORISATION ISSUED ON 19 NOVEMBER 2007 PROPOSED CONSTRUCTION OF THE 765KV GAMMA SUBSTATION OF THE FARMS UIT VLUGT FONTEIN NO.265 AND SCHIETKUIL NO.3 IN THE PIXELY KA SEME AND CENTRAL KAROO DISTRICT MUNICIPALITIES; WESTERN CAPE PROVINCE AND NORTHERN CAPE PROVINCE

The application for amendment of the Environmental Authorisation received on 16 September 2022, our telephonic discussion on 03 October 2022 and your subsequent email dated 03 October 2022 has reference.

The department has evaluated your application for amendment, and upon review of the information submitted and taking into consideration that the EA in question was issued more than 10 years ago, the department currently does not have enough information to make an informed decision on whether the proposed amendment will fall under the ambits of a Part 1 or Part 2 process as outlined in Chapter 5.

Your application for an amendment to the EA states:

The proposed 132kV/400kV yard and 400kV OHL turn-ins fall within the scope of the current EA. However – based on further technical analysis and design – it has been identified that the layout of the authorised infrastructure will need to be updated to accommodate the updated configuration/layout now proposed to be implemented. The updated layout falls within the scope and footprint of what was originally assessed in the original EIA process.

It is understood that your wish to reconfigure and or realign how the Droerivier- Hydra No. 2” 400kV OH will turn- in to the second phase of the Gamma substation. However, if you look at the new start and end points, and the realignment of the proposed reconfigurations, it is clear that these are significantly different from what was presented in the final EIAR dated August 2007.

It is clear, based on the review of the EIAR dated August 2007, that a lot of emphases was placed on the substation and not on the turn in lines and associated impacts which were deemed as associated infrastructure according to the RoD. As such, this makes it difficult for the department determine with certainty that the areas where the proposed reconfigurations will occur (starting point extending to the substation connection point) were assessed or formed part of the assessed area as per the final EIAR, especially taking into consideration that the three 400KV Droerivier – Hydra lines were already existing when the application for authorisation was lodged, and the decision was issued for the Gamma substation.

Taking the above into consideration, you are therefore required to furnish this department with proof which will support your assertions that the areas where the powerline will be reconfigured formed part of the assessed area as indicated in the EIA dated August 2007 and the assessment covered the impacts associated with powerline infrastructure and not just the substation footprint.

In addition to the above you are also required to provide a Map which depict the proposed powerline reconfigurations in relation to three (03) existing 400kV powerlines, the length of the sections of powerline to be reconfigured, and their respective geographic coordinates (the start, middle and end points of both the east and west reconfiguration).

The above requested information must be submitted on or before the 25 October 2022. The requested information must be sent via email to myself and Ms Thulisile Nyalunga on TNyaluga@dffe.gov.za

Upon receipt of the above-mentioned information, this Department will then confirm the process to be followed in relation to this proposed amendment.

Yours sincerely,

Ms Sindiswa (Sindi) Dlomo

Designation: Deputy Director: National Infrastructure Projects

Chief Directorate: Integrated Environmental Authorisations

Department of Forestry, Fisheries and the Environment

Tel: 012 399 9390

Cell: 076 940 5716

Email: SDlomo@environment.gov.za

"Please contact the case officer for any project related enquiries (see contact details above)"

From: Arlene Singh <arlene@veersgroup.com>

Sent: Friday, 16 September 2022 11:58

To: EIA Applications <EIAApplications@dffe.gov.za>

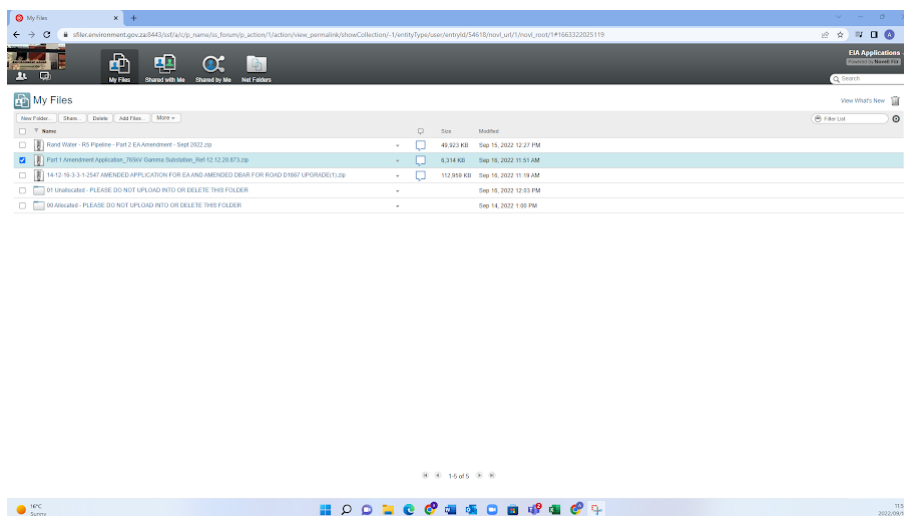
Cc: Coenrad Agenbach <CAGENBACH@dffe.gov.za>; Stephnie Kot <stephnie.kot@aced.co.za>; Norman Chetsanga <norman@veersgroup.com>; Justin Jacobs <justin@veersgroup.com>

Subject: Proof of Upload- Part 1 Amendment Application for the 765kV Gamma Substation_ Ref:12/12/20/873

Good day,

I trust that this email finds you well.

Please see below proof of upload of the Part 1 Amendment Application for the Gamma Substation.



Please do not hesitate to contact me if you have any queries. Kindly confirm receipt of the application and appendices. Thank you.

Kind regards,



ARLENE SINGH
DIRECTOR

+27 84 277 7074

arlene@veersgroup.com

<https://www.veersgroup.com/>

IMPORTANT: The contents of this email and any attachments are confidential. They are intended for the named recipient(s) only. If you have received this email by mistake, please notify the sender immediately and do not disclose the contents to anyone or make copies thereof.



NALA
ENVIRONMENTAL
CONSULTING FIRM

11 January 2023

For Attention: Chief Director- Integrated Authorisations
Department of Environment, Forestry and Fisheries (DFFE)
Environment House
473 Steve Biko Road
Arcadia
Pretoria
0083

Via Email: EIAapplications@dffe.gov.za

Dear Sir/Madam,

WITHDRAWAL OF APPLICATION FOR PART 1 ENVIRONMENTAL AUTHORISATION (EA) AMENDMENT FOR THE 765KV GAMMA SUBSTATION ON THE FARMS UIT VLUGT FONTEIN NO.265 AND SCHIETKUIL NO.3 IN THE PIXELY KA SEME AND CENTRAL KAROO DISTRICT MUNICIPALITIES; WESTERN CAPE PROVINCE AND NORTHERN CAPE PROVINCE: (DFFE Ref.: 12/12/20/873/AM2)

Introduction

Eskom Holdings SOC Limited has applied for a Part 1 Environmental Authorisation (EA) Amendment for the authorised and existing 765kV Gamma Substation of the Farms Uit Vlucht Fontein No.265 and Schietkuil No.3 in the Pixely Ka Seme and Central Karoo District Municipalities; Western Cape Province and Northern Cape Province. The Gamma Substation and its associated infrastructure originally received authorisation from the Department of Forestry, Fisheries and the Environment (DFFE) [then known as the Department of Environmental Affairs (DEA)] in November 2007 by way of DEA Reference number 12/12/20/873. The EA authorised the construction of the Gamma Substation in phases/stages. The first phase of the Gamma Substation commenced with construction activities within the validity period of the Environmental Authorisation and concluded construction in 2013.

The proposed amendments involved the following:

1. Addition of Conditions to the EA relating to the Updated Layout (September 2022).
2. Amendment to the project description on Page 3 of the Environmental authorisation related to updated layout and co-ordinates of the 765kV Gamma Substation.
3. Amendment to the Title of the Environmental Authorisation.
4. Change to the name of contact person and contact details for the Holder of the Environmental Authorisation.

The proposed amendment to the layout relating to the Gamma substation yard and the proposed 400kV turn-in infrastructure was to enable the connection of the authorised Umsinde Emoyeni Wind Farm (DFFE Ref: 14/12/16/3/3/2/686), has been selected as a



+27 84 277 7074



Unit 261, Kikuyu Waterfall,
Midrand, Johannesburg, 20290



NALA
ENVIRONMENTAL
CONSULTING FIRM

preferred bidder with a private off-taker, and has been registered as a Strategic Integrated Project (SIP). Following a review of the EIAr dated August 2007 and all associated documentation including the specialist assessments and mapping, it is evident that although the EIAr (2007) makes reference to the future turn-in's of the 400kV powerline, the report however remained vague on the assessment of the turn-in's specific co-ordinates (start, middle and end) or an assessment corridor. The EIAr and associated specialist assessments considered a broader study area, and do not define a specific corridor for the 400kV turn-in of the Droerivier-Hydra 2 Overhead Powerline.

The application for the Part I Amendment of the EA was submitted to the DFFE on 16 September 2022, a telephonic discussion was undertaken on the 03 October 2022, further to this a request for additional information was received on the 06 October 2022 and the information was submitted to the DFFE on the 25 October 2022. Following the receipt of the additional information the DFFE acknowledged the Application on the 10 November 2022 and indicated that Application for Amendment of the EA fell within the ambit of amendments to be applied for in terms of Part 2 of Chapter 5 of the Environmental Impact Assessment Regulations, 2014 as amended. The submission of the Final Motivation report and relevant specialist assessments are to be submitted to the DFFE for decision making by the 14 February 2023. Due to the December 2022 holiday period several specialist consultants were not available to accept the appointment to undertake the specialist assessments and complete the relevant comparative assessments reports, therefore taking the public participation timelines into account the submission of the deadline of the 14 February 2023 will not be met.

In light of this, Nala Environmental as the independent Environmental Assessment practitioner (EAP), hereby requests to withdraw the application for the Part I Amendment of the EA reference number: 12/12/20/873/AM2 on behalf of the Applicant (Eskom Holdings SOC limited). A new Application will then be applied for in terms of Part 2 of Chapter 5 of the Environmental Impact Assessment Regulations, 2014, as amended and will include the information and communication with DFFE as discussed with the case officer.

We trust you will find everything in order. Please do not hesitate to contact us should you have any queries in this regard.

Kind Regards
ARLENE SINGH
NALA ENVIRONMENTAL
(arlene@veersgroup.com)



Arlene Singh <arlene@veersgroup.com>

Request for Withdrawal - Ref: 12/12/20/873/AM2

2 messages

Arlene Singh <arlene@veersgroup.com>

Wed, Jan 11, 2023 at 8:55 AM

To: EIA Applications <EIAApplications@dffe.gov.za>

Cc: Sindiswa Dlomo <SDLOMO@dffe.gov.za>, Stephnie Kot <stephnie.kot@aced.co.za>, Simamkele Ntsengwane <Simamkele.Ntsengwane@aced.co.za>, Norman Chetsanga <norman@veersgroup.com>, Justin Jacobs <justin@veersgroup.com>

Good morning,

I trust that this email finds you well.

Kindly find attached the requested withdrawal for the Gamma Substation Part 1 Amendment Application , Ref : 12/12/20/873/AM2.

Please do not hesitate to contact me should you have any queries. Thank you.

Kind regards,

IMPORTANT: The contents of this email and any attachments are confidential. They are intended for the named recipient(s) only. If you have received this email by mistake, please notify the sender immediately and do not disclose the contents to anyone or make copies thereof.**12-12-20-873-AM2_ Request for Withdrawal_Gamma P1 Amendment.pdf**
233K**EIA Applications** <EIAApplications@dffe.gov.za>

Wed, Jan 11, 2023 at 9:43 AM

To: Arlene Singh <arlene@veersgroup.com>

Cc: Sindiswa Dlomo <SDLOMO@dffe.gov.za>, Stephnie Kot <stephnie.kot@aced.co.za>, Simamkele Ntsengwane <Simamkele.Ntsengwane@aced.co.za>, Norman Chetsanga <norman@veersgroup.com>, Justin Jacobs <justin@veersgroup.com>, Thulisile Nyalunga <TNYALUNGA@dffe.gov.za>, Thabile Sangweni <TSANGWENI@dffe.gov.za>

Dear Arlene.

We acknowledge receipt of the withdrawal email for the above-mentioned application received on 25 October 2022.

The application for an amendment to the EA with the reference number 12/12/20/873/AM2 is now deemed withdrawn and the application is closed on the Departments side.

Regards

EIA Applications

Integrated Environmental Authorisations

Department of Forestry, Fisheries and the Environment

Please note that this email is for the receipt and processing of online applications only, and is not monitored for responses. All queries must be directed to EIAadmin@dfre.gov.za.

-

You are advised that this mailbox has a 48 hour response time.

Please note that this mailbox has a 5mb mail limit. No zip files are to be attached in any email.

[Quoted text hidden]



Arlene Singh <arlene@veersgroup.com>

Pre-App Request Requirements- Gamma Substation

Sindiswa Dlomo <SDLOMO@dffe.gov.za>

Mon, Jan 16, 2023 at 1:02 PM

To: Arlene Singh <arlene@veersgroup.com>

Cc: Norman Chetsanga <norman@veersgroup.com>, Justin Jacobs <justin@veersgroup.com>

Afternoon Arlene,

There is no need to submit a new pre-application meeting request.

Kindly ensure that the new application for amendment is accompanied by a cover letter detailing the background in relation to our communication last year. This email must also be attached as it will serve as confirmation that I indicated that a pre application meeting request is not a requirement.

Please insure that you indicate the name of the case officer that was assigned to the initial application for amendment in your cover letter.

Regards,

Sindi

[Quoted text hidden]