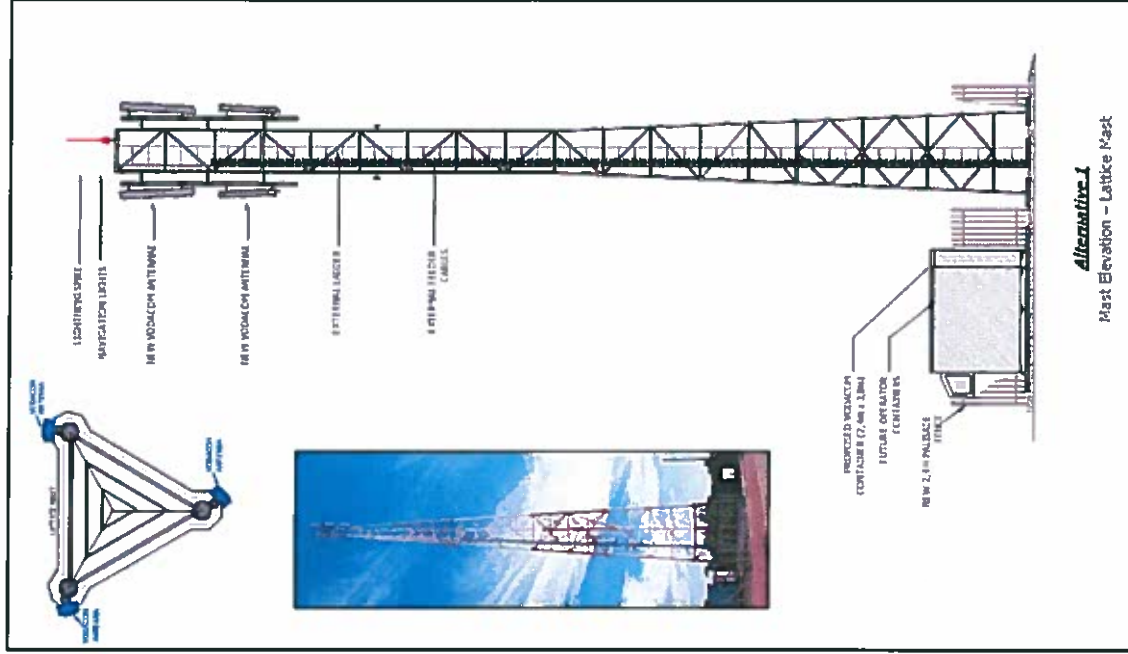


BASE STATION: Wild Rivers

FACILITY ILLUSTRATION



SITE SPECIFICATION

CIVIL INFO:

SITE TYPE: Macro

MAST HEIGHT / TYPE: 25m
Tree Type Mast

CONTAINER TYPE:
2.4x2.4x3.8m (white)

CO ORDS:

S24° 14' 52.6" E30° 49' 56.1"

FENCE TYPE: Steel Palisade

HASL: 400m

POLE NO: FMC 500/23

CONTACT INFO:

PROPERTY OWNER:

Wild Rivers Nature Reserve
(Pty) Ltd

CONTACT NUMBERS:

072 648 1160

PROPERTY DESCRIPTION:

Portion 15 of the Farm Epsom
189 KT

SCALE: NOT TO SCALE

DRAWN BY: TEKPLAN

TEL: (015) 291-4177



vodacom