



**City of
Ekurhuleni**

Tuna Park, Nigel

Presentation

12 September 2019



Introduction

The proposed scope of the project includes the design and development of a landscape master plan to guide the rehabilitation, landscape design and open space optimization of the Tuna Park.

The design of Tuna Park includes the clean-up and rehabilitation of the wetland and its surrounds, as well as, improving the recreational quality of the park through the development of a community park.

Working hand in hand with the development of a landscape master plan an EIA process is currently underway.

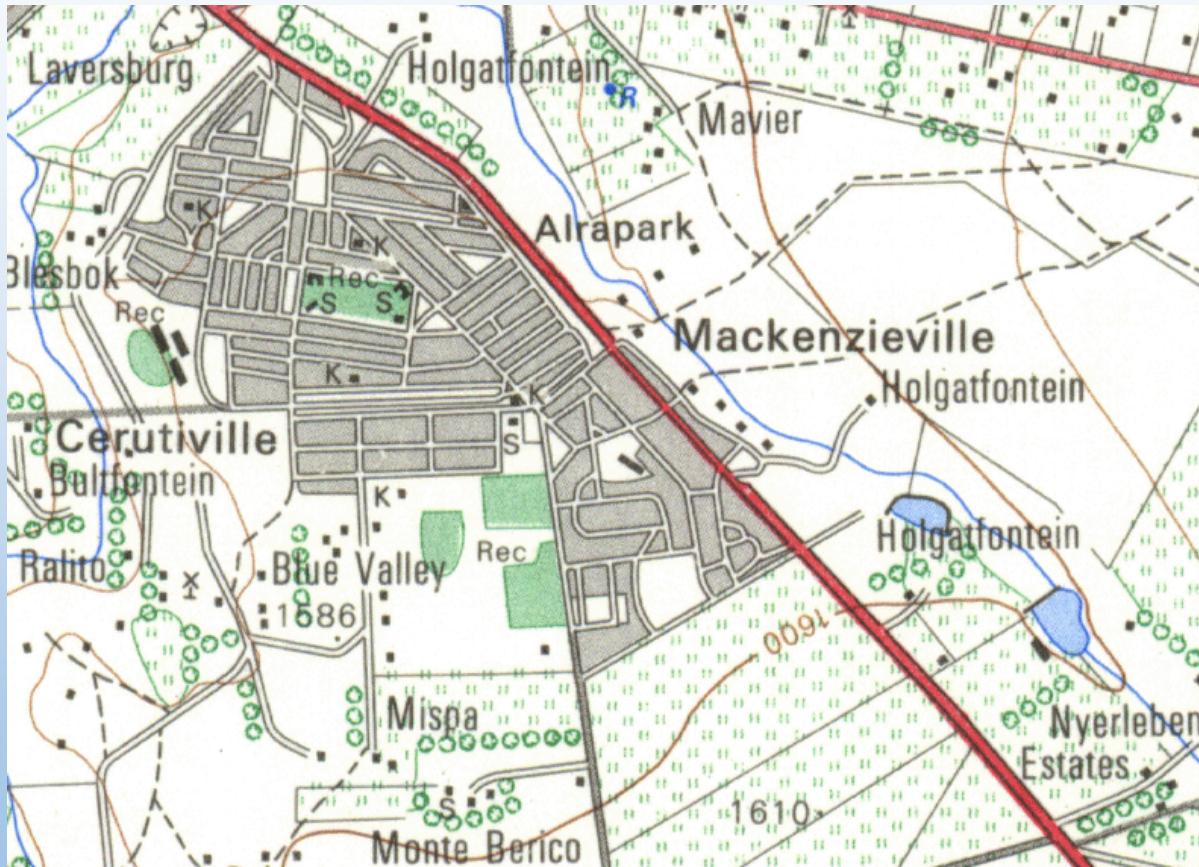
Location





Tuna Park, Nigel – Presentation – 12 September 2019

Historic Developments



- Historically the area around Tuna Park has grown significantly
- Historic aerial images sourced from 1937 – 1991 to determine the changes to the site over time
- 1991 saw the most significant changes to the site with the addition of the sports fields
- Over the years the wetland has morphed from a natural vlei area to a more functional permanent water body that assists in storm water retention



Existing Conditions & Issues



- Illegal dumping and burning of waste
- Pollution of water source – bad water quality
- Infilling of construction waste
- Dense reed growth
- Aging infrastructure – fencing & grandstands
- Inadequate storm water infrastructure
- Illegal structures – car washes & brick building
- Lack of recreational facilities
- Saturated soil conditions
- Health and safety



General site photos



Litter and pollutants



Illegal structures



Genis loci of the site

Context

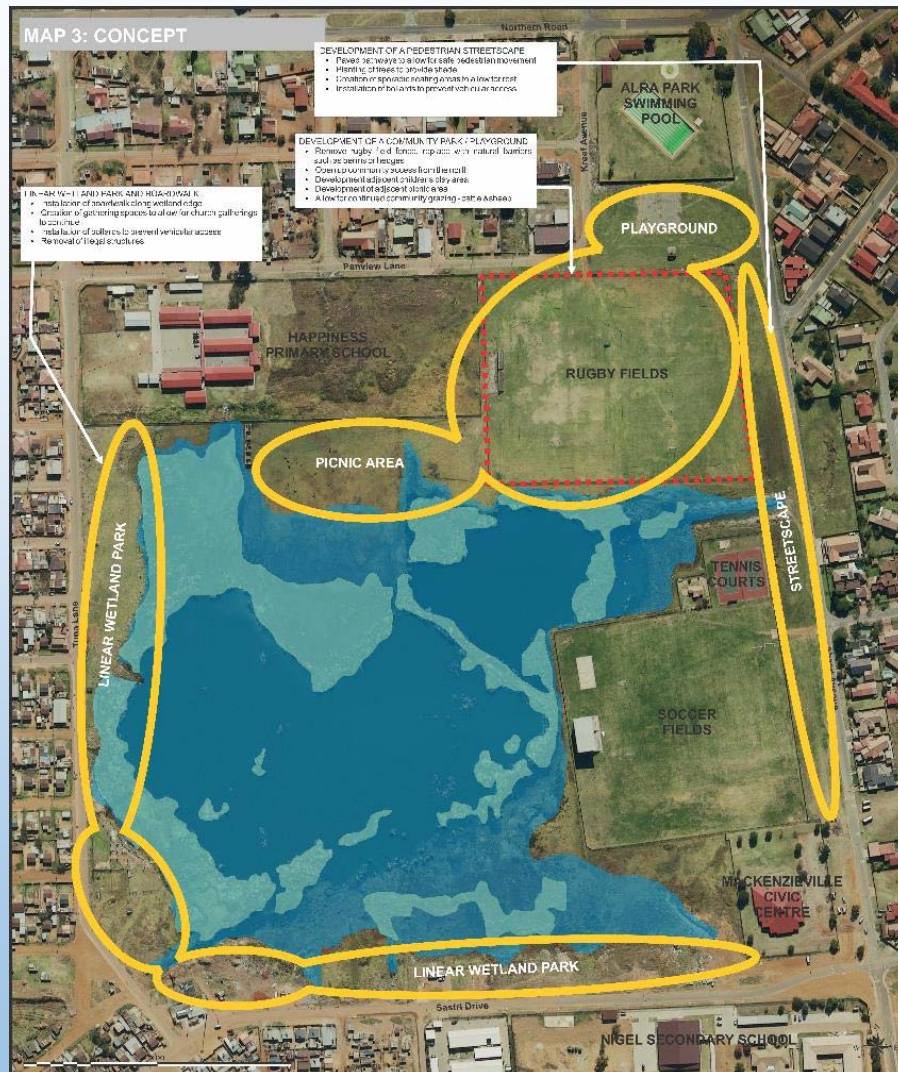
- No cohesive open space linkages between existing infrastructure
- Informal pedestrian movement network throughout the site
- Infilled areas as a result of previous developments and illegal dumping of construction waste
- Various storm water inlets – southern portion of the site
- Saturated soil conditions
- Illegal dumping
- Illegal structures – south west corner of the site
- Old dilapidated structures inhibiting cohesive space development
- Unsafe access point (alleyway) to site between school and fields
- Community grazing throughout the site



Concept

To develop a cohesive open space system

- Creation of park development nodes catering to different community needs i.e. play, rest, relax, recreation
- Cater to safe pedestrian friendly movement throughout the site
- Open up access to the northern portion of the site
- Illegal structures need to be either removed or their functions formally incorporated
- Linkage of individual spaces through park development and boardwalks
- Development of a streetscape along the eastern portion of the site



Master Plan

The objective of the master plan is to develop a strategy that will set out a course for the rehabilitation of Tuna Park to a safe cohesive community park.



Master Plan - nodes

Three development nodes are proposed:

1. Sports node
2. Linear wetland node
3. Civic centre node



Sports node

The objective of the master plan is to develop a strategy that will set out a course for the rehabilitation of Tuna Park to a safe cohesive community park.

- Removal of rugby field fence – replace with natural barriers
- Bermed areas double up as seating spaces for when sports events take place
- Open up community access from the north – Panview Lane & Kreef Avenue
- Removal of unsafe alley
- Creation of pause space for gathering
- Develop adjacent children's play areas – inclusive of natural playgrounds
- Kickabout lawn area in area where soils can be waterlogged certain portions of the year



Sports node – precedents



Linear wetland node

The objective of the master plan is to develop a strategy that will set out a course for the rehabilitation of Tuna Park to a safe cohesive community park.

- Development of boardwalk along the wetland edge – safe pedestrian movement network
- Creation of shaded gathering spaces – picnic & church gatherings
- Formalise one car wash area – currently well utilised social gathering space
- Encourage outdoor activities through the introduction of outdoor gym & playground areas
- Link into surrounding school spaces – inclusion of outdoor classroom area
- Rehabilitate and consolidate the existing storm water inlets
- Prevent vehicular access - inclusion of bollards



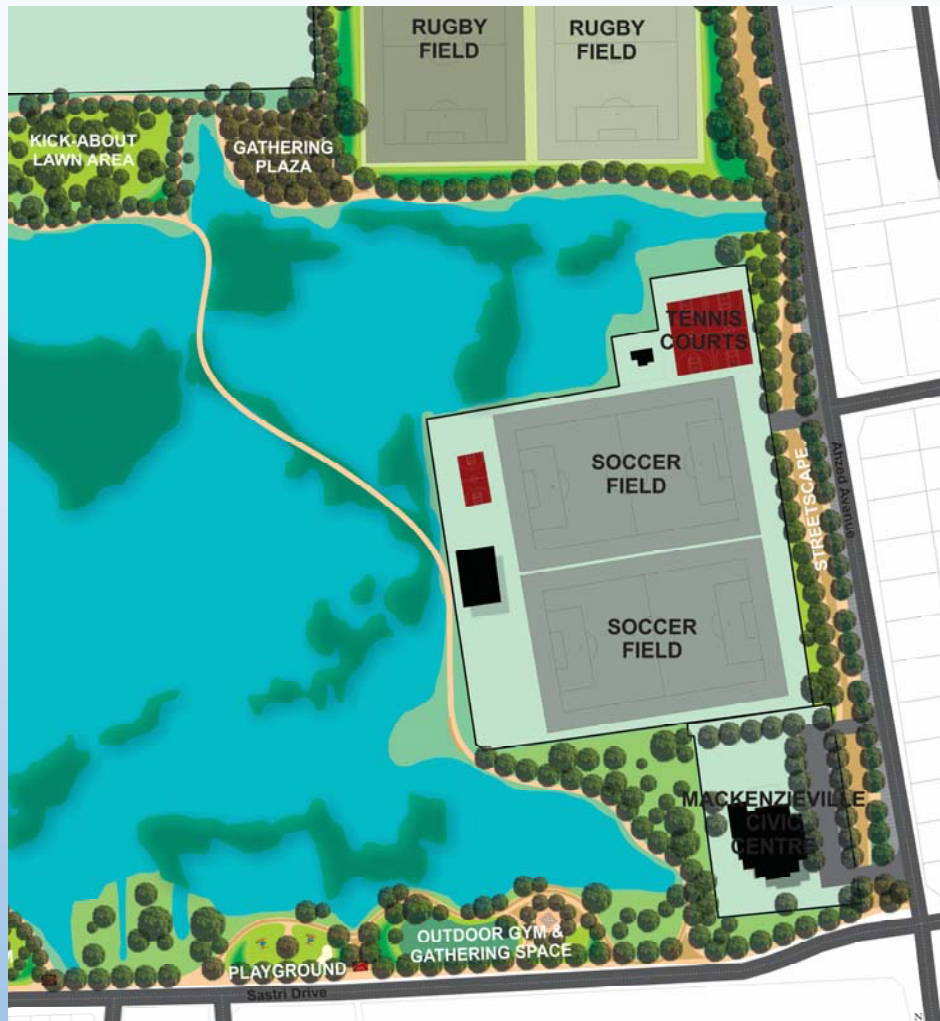
Linear wetland node – precedents



Civic centre node

The objective of the master plan is to develop a strategy that will set out a course for the rehabilitation of Tuna Park to a safe community park.

- Paved pedestrian pathways – safe pedestrian movement
- Creation of seating areas to allow for rest
- Inclusion of parking to cater for sports events & spill over for the Mackenzieville Civic Centre functions
- Prevent vehicular access - inclusion of bollards



Civic centre node – precedents

