

PHOTOLOG OF PROJECT SITE



Figure 1: View of existing Thabazimbi-Lephalale single railway (left) and the first phase of the 100 wagon train holding yard being constructed by Boikarabelo Coal Mine (right). Photo taken facing south west towards Geelhoutkloof 359LQ

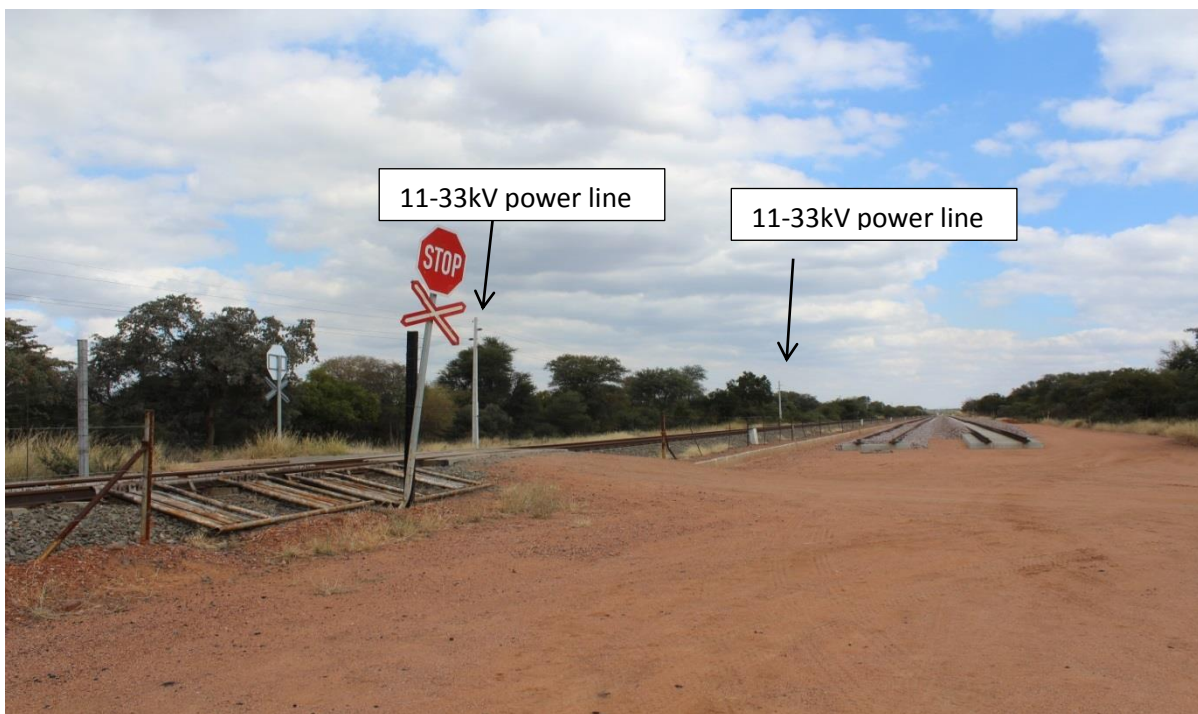


Figure 2: View of the 11-33kV Eskom power line south of the existing railway track, Boikarabelo holding yard. Photo taken facing south west. The 11-33kV Eskom power line will need to be relocated to make way for the new railway yard



Figure 3: View of the existing railway track (right) and cleared servitude (left) for the completion of Boikarabelo holding yard



Figure 4: View to the south east (south) of the existing railway track where the railway yard is proposed. The project site is covered in indigenous bushveld vegetation and several protected tree species.

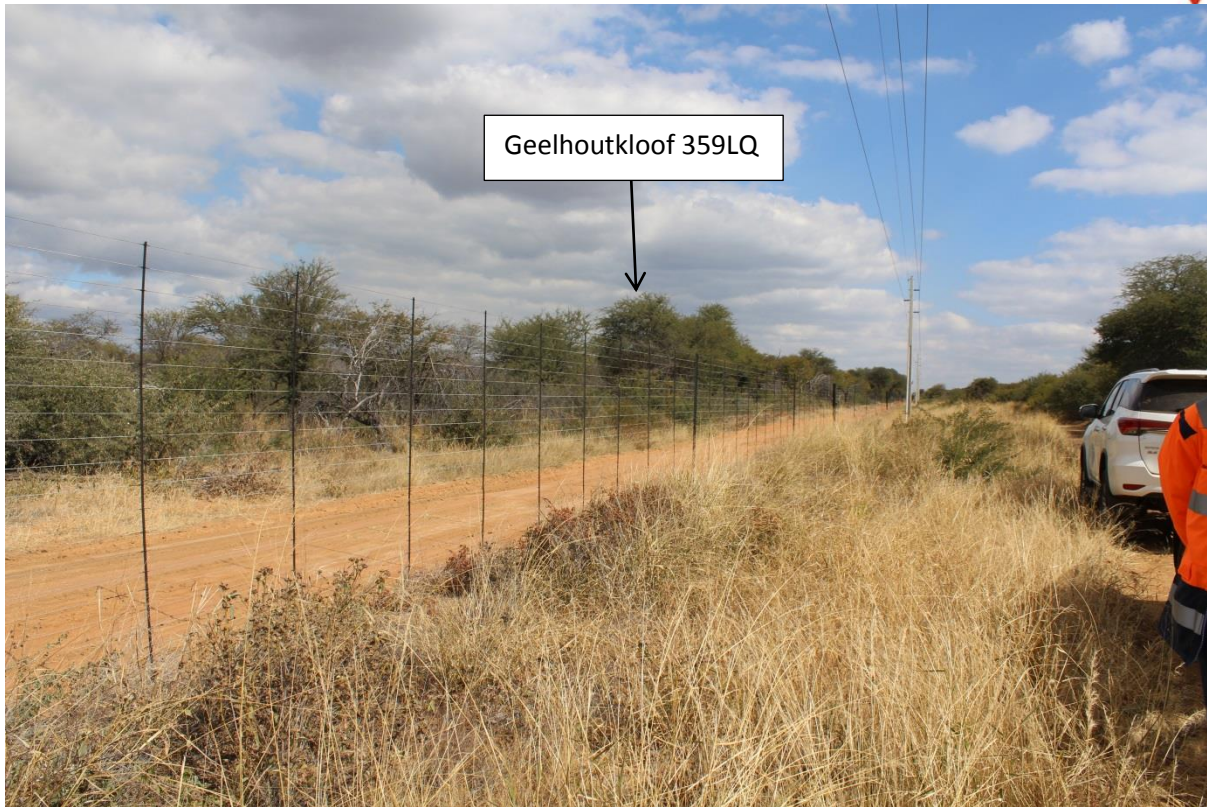


Figure 5: View to the project site and location of the new railway yard. Photo taken south of the existing railway track facing south west. The Eskom 11-33kV power line routes south of the existing railway track, including Geelhoutkloof 359LQ game farm fence line covered in indigenous bushveld vegetation. Further evident from the photo are the sandy soils.