

**A LETTER OF EXEMPTION FOR BOTHAS HILL
SERVICE STATION AND SHOPPING CENTRE**

FOR MONDLI CONSULTING SERVICES

DATE: 16 MAY 2021

By Gavin Anderson

Umlando: Archaeological Surveys and Heritage

Management

PO Box 10153, Meerensee, 3901

Phone: 035-7531785 Cell: 0836585362

umlando@gmail.com



Abbreviations

HP	Historical Period
IIA	Indeterminate Iron Age
LIA	Late Iron Age
EIA	Early Iron Age
ISA	Indeterminate Stone Age
ESA	Early Stone Age
MSA	Middle Stone Age
LSA	Late Stone Age
HIA	Heritage Impact Assessment
PIA	Palaeontological Impact Assessment

INTRODUCTION

“Simandlovu Trading is planning to construct a Service Station with food outlets and a Retail Centre to be known as Bothas Hill Convenience Centre on erf 363 Bothas Hill. The proposed Centre will serve as a refueling place with a convenience shop, food outlets with a drive thru and a Retail Centre with several shops.

The project is falling within eThekweni Metropolitan area, off old main Road (R103) traversing through the town of Bothas Hill. The project co-ordinates are recorded as follows: 29° 47' 50.48"S = 30° 53' 28.62"E.

The project entails the construction of Bothas Hill Service Station including associated structures and infrastructure comprising fuel storage tanks [2 x 46 000 litres ULP], 1 x 46 000 litres diesel totalling 138 000 litres all underground, pumps, concrete paving & canopy, convenience shop, retail centre with shops, food outlets / drive thru, kitchen, toilets, car wash and parking area. The height restrictions for the area is 3 storeys” (BID 2021).

Umlando was requested to assist in the HIA and suggested that it be exempt from further HIA. Figures 1 – 4 show the location of the site.

FIG. 1 GENERAL LOCATION OF THE STUDY AREA

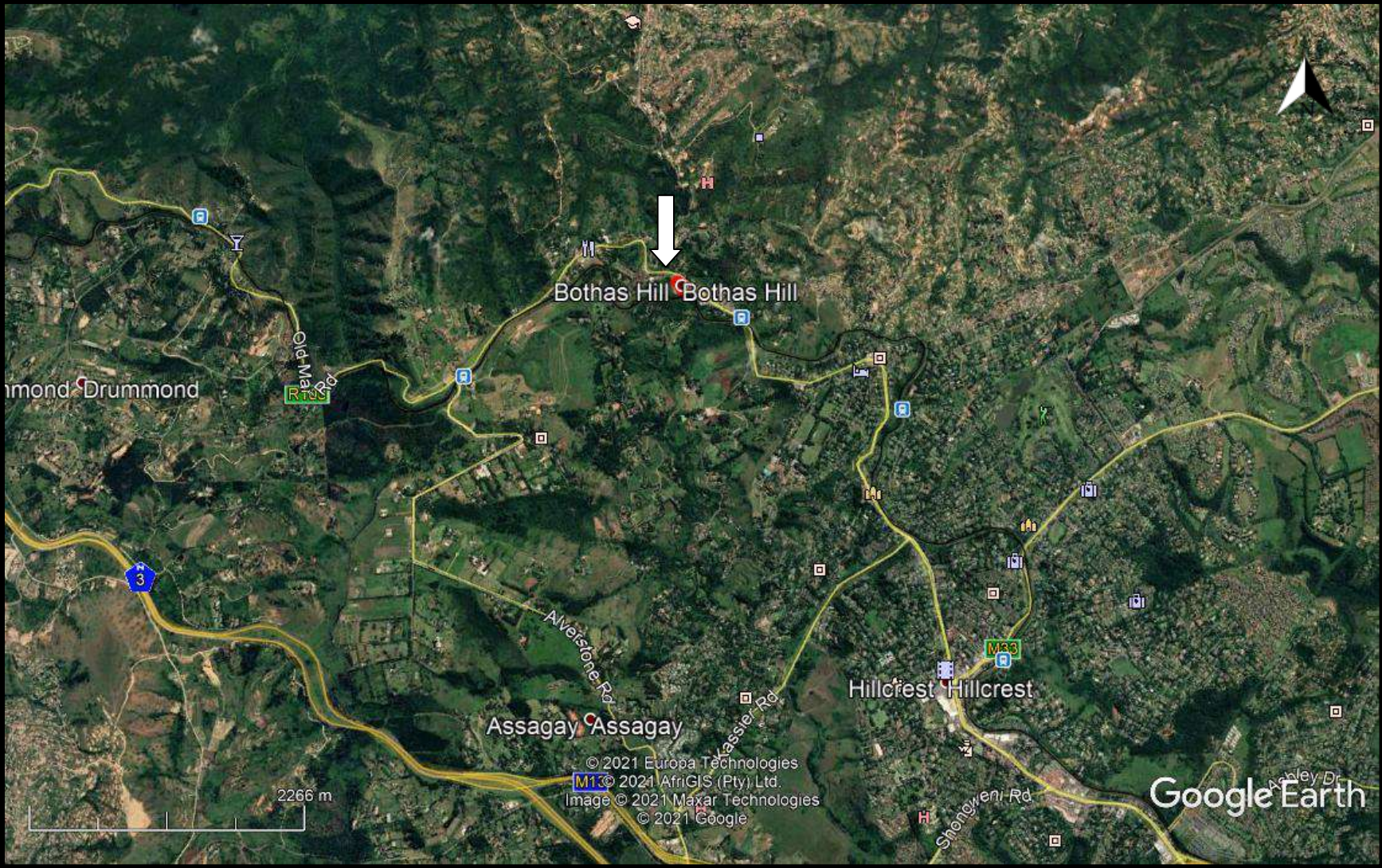


FIG. 2: AERIAL OVERVIEW OF THE STUDY AREA

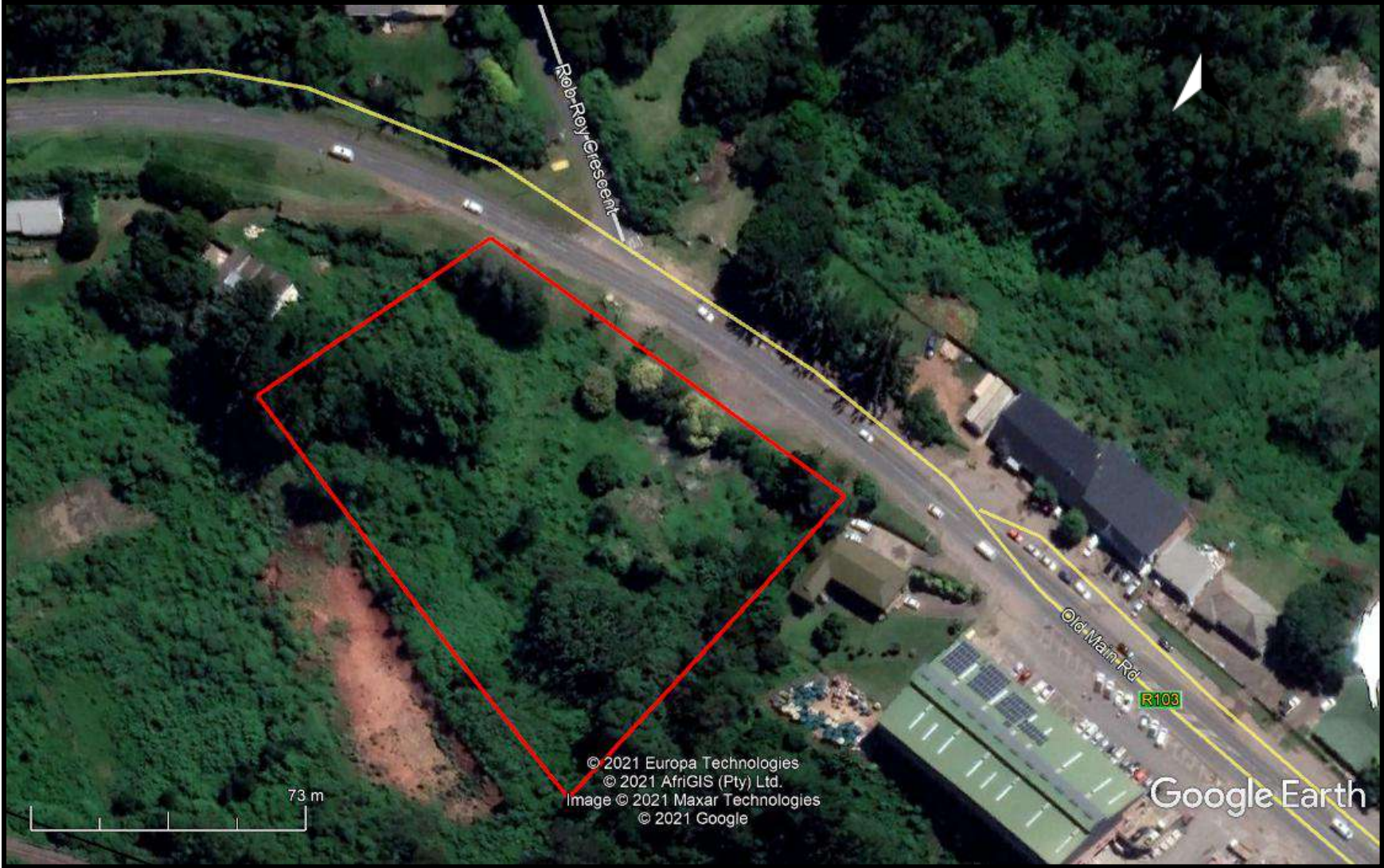


FIG. 3: TOPOGRAPHICAL OVERVIEW OF THE EASTERN STUDY AREA (1996)

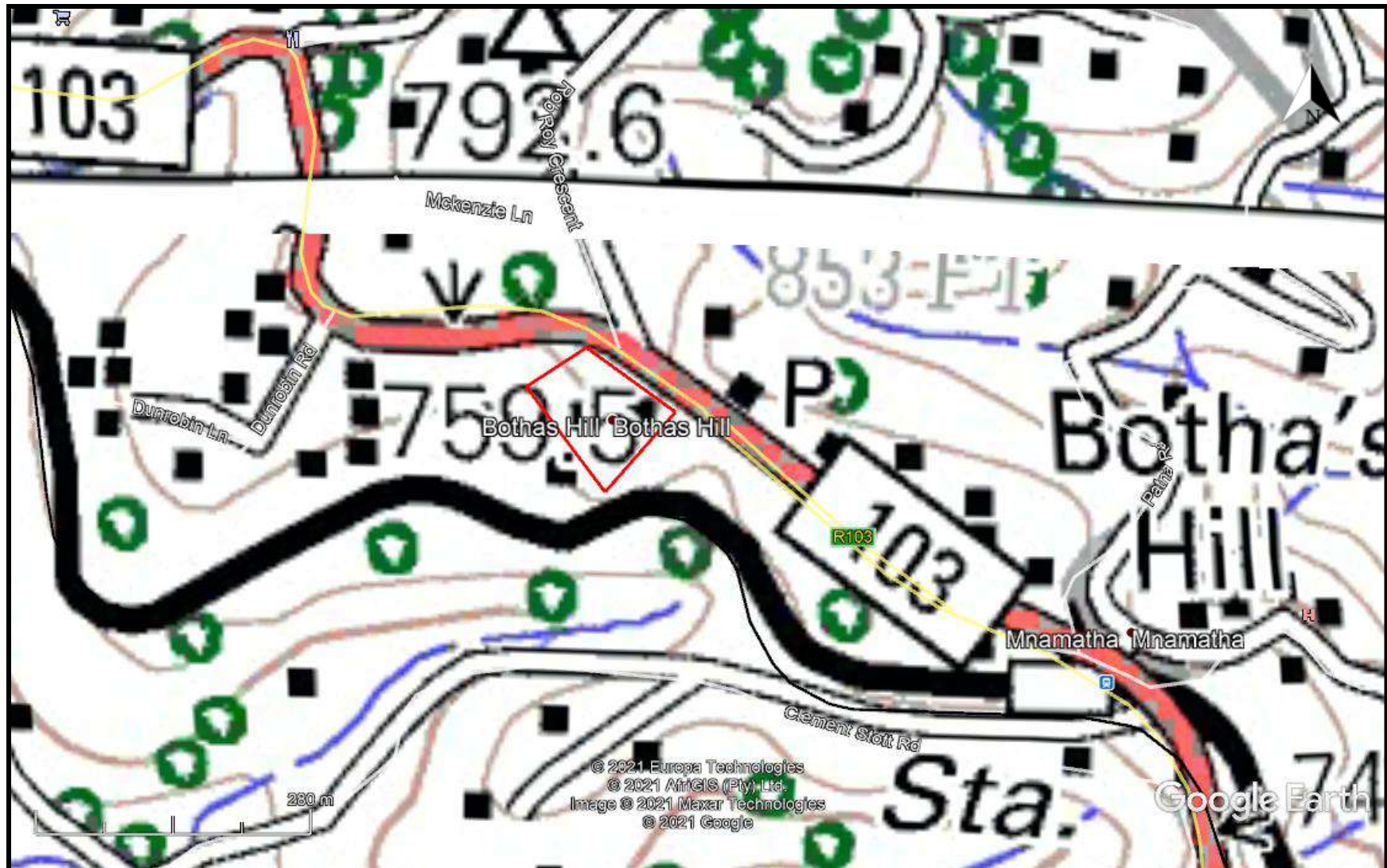


FIG. 4: SCENIC VIEWS OF THE SITE



The desktop study consisted of analysing various maps for evidence of prior habitation in the study area, as well as for previous archaeological surveys. The archaeological database indicates that there are a few sites in the general area (fig. 5). These sites include Early of Stone Age and Historical buildings.

No national monuments, battlefields, or historical cemeteries are known to occur in the study area.

The 1937 (fig. 6) aerial map indicates that the area was grassland and no buildings occur ion the study area.

The 1968 topographical map (fig. 7) indicates that there is a building in the northeast corner. The building existed up to 2015 and was then demolished in 2016 (fig.'s 8 – 9). The partial remains of a wall still occur from this building. The Google Earth imagery indicates that the surrounding area was used for growing crops or vegetables.

The study area is of no palaeontological sensitivity (fig. 10).

The area has no remaining heritage features and is unlikely to yield archaeological sites. The study area should be exempt form further heritage mitigation.

FIG. 5: LOCATION OF KNOWN HERITAGE SITES NEAR THE STUDY AREA

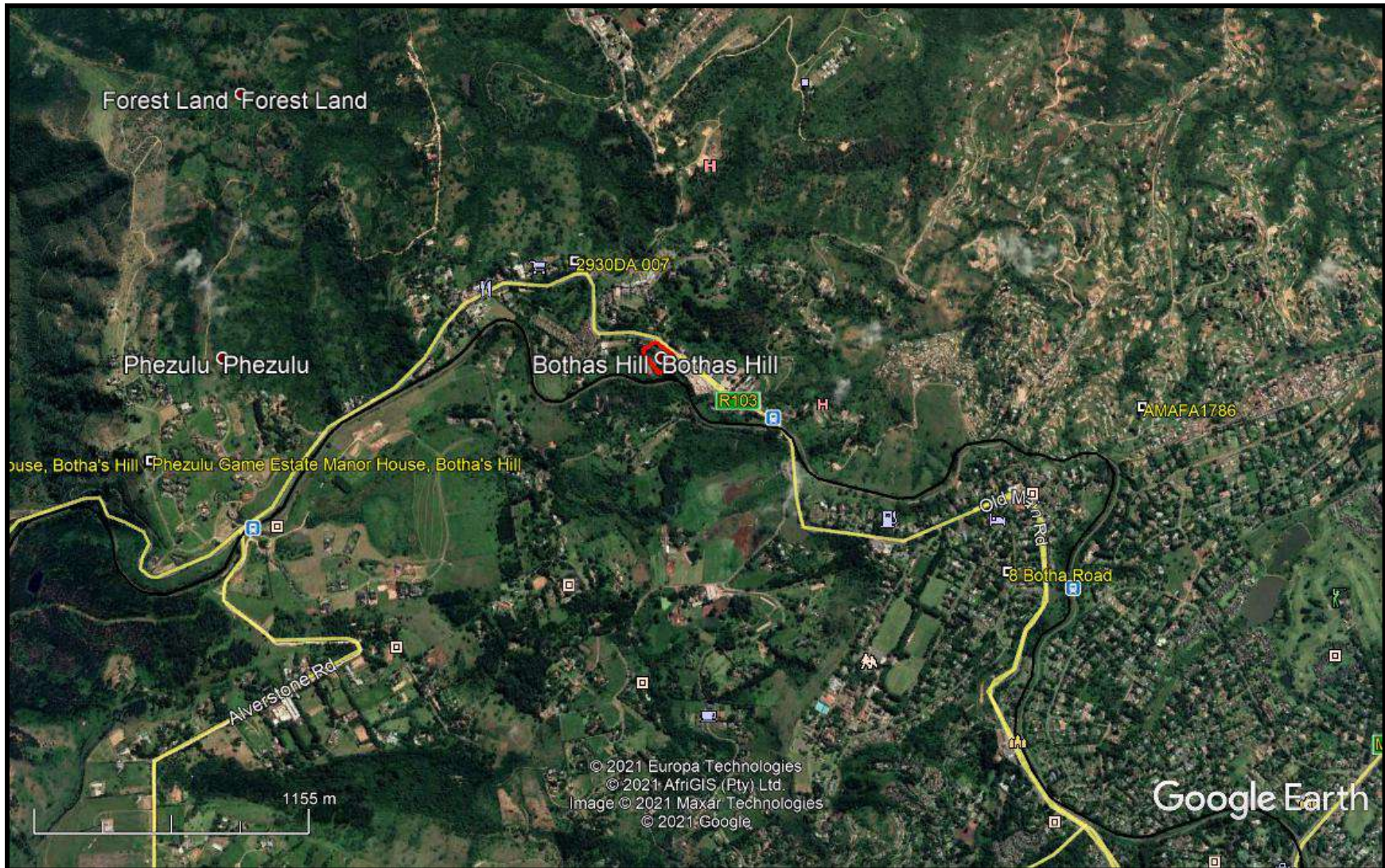


FIG. 6: STUDY AREA IN 1948



FIG. 7: STUDY AREA IN 1968

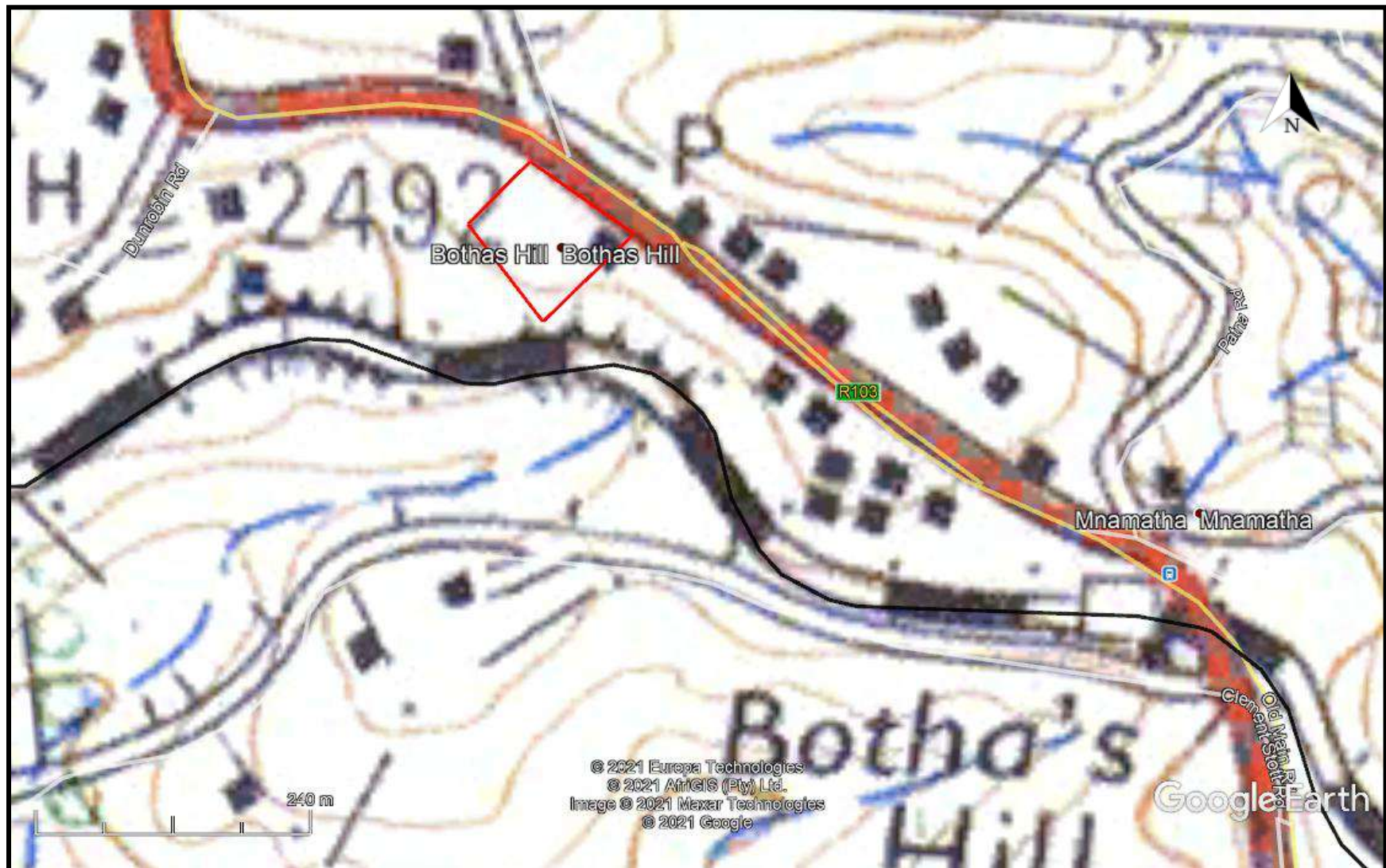


FIG. 8: STUDY AREA IN AUGUST 2015

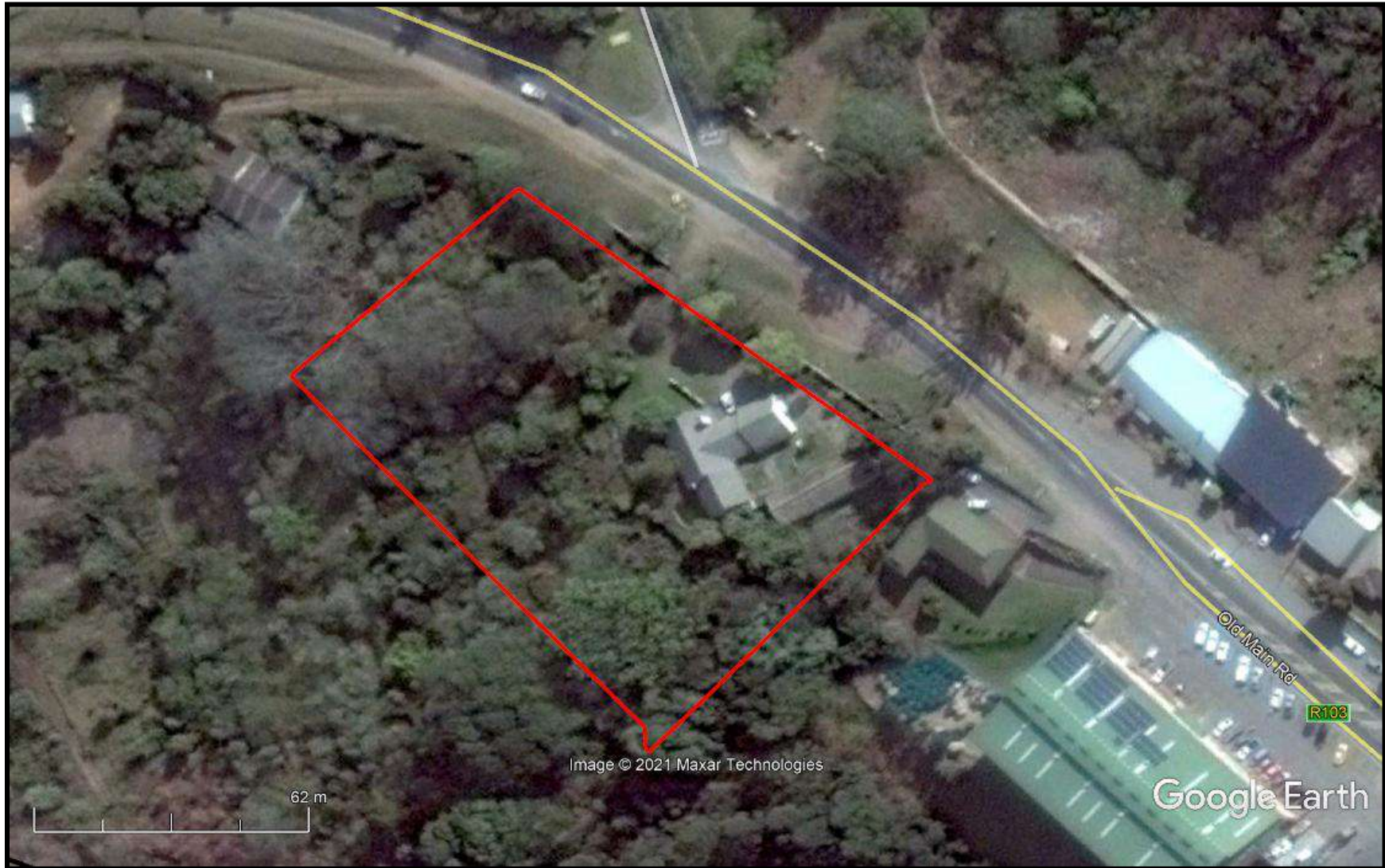
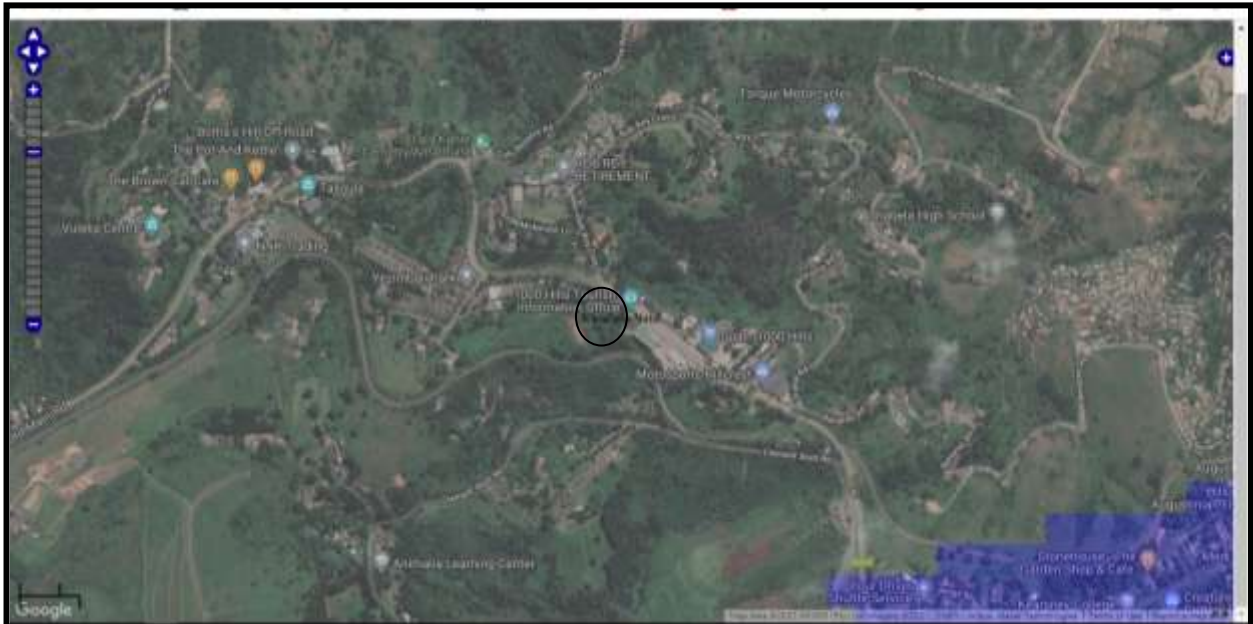


FIG. 9: STUDY AREA IN MARCH 2016



FIG. 10: PALAEOONTOLOGICAL SENSITIVITY



COLOUR	SENSITIVITY	REQUIRED ACTION
RED	VERY HIGH	field assessment and protocol for finds is required
ORANGE/YELLOW	HIGH	desktop study is required and based on the outcome of the desktop study, a field assessment is likely
GREEN	MODERATE	desktop study is required
BLUE	LOW	no palaeontological studies are required however a protocol for finds is required
GREY	INSIGNIFICANT/ZERO	no palaeontological studies are required
WHITE/CLEAR	UNKNOWN	these areas will require a minimum of a desktop study. As more information comes to light, SAHRA will continue to populate the map.

EXPERIENCE OF THE HERITAGE CONSULTANT

Gavin Anderson has a M. Phil (in archaeology and social psychology) degree from the University of Cape Town. Gavin has been working as a professional archaeologist and heritage impact assessor since 1995. He joined the Association of Professional Archaeologists of Southern Africa in 1998 when it was formed. Gavin is rated as a Principle Investigator with expertise status in Rock Art, Stone Age and Iron Age studies. In addition to this, he was worked on both West and East Coast shell middens, Anglo-Boer War sites, and Historical Period sites.

DECLARATION OF INDEPENDENCE

I, Gavin Anderson, declare that I am an independent specialist consultant and have no financial, personal or other interest in the proposed development, nor the developers or any of their subsidiaries, apart from fair remuneration for work performed in the delivery of heritage assessment services. There are no circumstances that compromise the objectivity of my performing such work.



Gavin Anderson
Archaeologist/Heritage Impact Assessor