

ENVIRONMENTAL IMPACT ASSESSMENT FOR THE PROPOSED ILANGA CSP 5 PROJECT,
NEAR UPINGTON, NORTHERN CAPE PROVINCE

FAUNA & FLORA SPECIALIST ECOLOGICAL IMPACT ASSESSMENT REPORT



**PRODUCED FOR SAVANNAH ENVIRONMENTAL
ON BEHALF OF
FG EMVELO (PTY) LTD
BY**

BY



Simon.Todd@3foxes.co.za

APRIL 2016

CONTENTS

Declaration of Consultants’ Independence3

Executive Summary4

1 Introduction6

 1.1 Scope of Study6

 1.2 Assessment Approach & Philosophy.....8

 1.3 Relevant Aspects of the Development..... 11

2 Methodology..... 12

 2.1 Data Sourcing and Review 12

 2.2 Site Visit..... 14

 2.3 Sensitivity Mapping & Assessment..... 14

 2.4 Sampling Limitations and Assumptions 15

3 Description of the Affected Environment- Baseline..... 16

 3.1 Broad-Scale Vegetation Patterns 16

 3.2 Site Description 17

 3.3 Protected and Listed Plant Species 20

 3.4 Cumulative Impact & Broad-Scale Processes 20

 3.5 Faunal Communities..... 22

 3.6 Site Sensitivity Assessment..... 24

4 Identification & Nature of Impacts..... 25

 4.1 Identified Impacts..... 25

 4.2 Assessment of Impacts..... 26

5 Conclusion & Recommendations..... 26

6 References 44

Annex 1. List of Plants 45

Annex 2. List of Mammals 49

Annex 3. List of Reptiles..... 52

Annex 4. List of Amphibians 54

DECLARATION OF CONSULTANTS' INDEPENDENCE

- I Simon Todd, as the appointed independent specialist hereby declare that I:
- act/ed as the independent specialist in this application;
- regard the information contained in this report as it relates to my specialist input/study to be true and correct, and
- do not have and will not have any financial interest in the undertaking of the activity, other than remuneration for work performed in terms of the NEMA, the Environmental Impact Assessment Regulations, 2010 and any specific environmental management Act;
- have and will not have no vested interest in the proposed activity proceeding;
- have disclosed, to the applicant, EAP and competent authority, any material information that have or may have the potential to influence the decision of the competent authority or the objectivity of any report, plan or document required in terms of the NEMA, the Environmental Impact Assessment Regulations, 2010 and any specific environmental management Act;
- am fully aware of and meet the responsibilities in terms of NEMA, the Environmental Impact Assessment Regulations, 2010 (specifically in terms of regulation 17 of GN No. R. 543) and any specific environmental management Act, and that failure to comply with these requirements may constitute and result in disqualification;
- have provided the competent authority with access to all information at my disposal regarding the application, whether such information is favourable to the applicant or not; and
- am aware that a false declaration is an offence in terms of regulation 71 of GN No. R. 543.

Note: The terms of reference must be attached.



Simon Todd Pr.Sci.Nat 400425/11.

April 2016

EXECUTIVE SUMMARY

FG Emvelo (Pty) Ltd is proposing the development of an additional Concentrated Solar Power (CSP) Facility and associated infrastructure adjacent to the authorised CSP site Karoshoek LFT 2 (1 x 100 MW Parabolic Trough) Site 1.4, DEA Ref No.: 14/12/16/3/3/2/299) within the Karoshoek Solar Valley Development on Portion 3 of the Farm Matjiesrivier 41, located approximately 30 km east of Upington within the Khara Hais Local Municipality in the Northern Cape. The Ilanga CSP 5 Project is proposed to generate up to 50MW in capacity and will be constructed over an area of approximately 600ha in extent within the broader property.

This Ecological Specialist Assessment Report forms part of the required Ecological Impact Assessment process for the development. The report details the ecological characteristics of the site and provides an assessment of the likely ecological impacts associated with the development of the solar energy facility. Impacts are assessed for the preconstruction, construction, operation, and decommissioning phases of the development.

The Ilanga CSP 5 site consists largely of deeper soils associated with in-filled valleys of dense *Rhigozum trichotomum* and *Stipagrostis* with conspicuous stands of *Boscia albitrunca*. The density of *Boscia albitrunca* and *Boscia foetida* within the site is high and these occur at an estimated density of 5 trees/ha giving rise to the potential loss of many as 3000 or more trees from the full 600ha development area. This is considered a significant loss to the local population and exceeds the guideline loss for triggering an offset from DAFF and direct engagement with DAFF will need to be started should the developer wish to develop the site. Furthermore, the additional development sites in the Karoshoek Solar Valley would contribute significant additional loss of trees from the area and the overall cumulative impact is considered to be high in the local context. *Boscia albitrunca* is however widespread and the loss of the trees from the area would not be significant at the national scale.

Due to the large amount of development proposed in the area, the development of the site will contribute to cumulative impact. Although the affected Bushmanland Arid Grassland vegetation type is extensive and the extent of habitat loss resulting from the development would not significantly impact the remaining extent of this vegetation type, the site does not consist of typical Bushmanland Arid Grassland and rather consists of densely vegetated in-filled valleys which are considered to be of above-average significance for fauna and more vulnerable to cumulative impact due to the limited extent of the affected habitat. Consequently the impact of the development on habitat loss, fragmentation and the future conservation potential of the area is considered of moderate to high overall magnitude and of local significance.

Although there are no highly sensitive features within the development footprint the loss of the protected trees from the development footprint is a significant local impact and the overall impact of the development cannot be mitigated to a low level as a result. Should the development of the site proceed, active engagement of DAFF would be required to deal with the permitting and possible offsetting required for the loss of the *Boscia* trees at the site. Overall, and with the suggested mitigation measures implemented, the impacts of the development are likely to be of moderate significance with regards to the loss of protected tree species and relatively low impacts for the other assessed impacts.

1 INTRODUCTION

FG Emvelo (Pty) Ltd is proposing the development of an additional Concentrated Solar Power (CSP) Facility and associated infrastructure adjacent to the authorised CSP site Karoshoek LFT 2 (1 x 100 MW Parabolic Trough) Site 1.4, DEA Ref No.: 14/12/16/3/3/2/299) within the Karoshoek Solar Valley Development on Portion 3 of the Farm Matjiesrivier 41, located approximately 30 km east of Upington within the Khara Hais Local Municipality in the Northern Cape. The Ilanga CSP 5 Project is proposed to generate up to 50MW in capacity and will be constructed over an area of approximately 600ha in extent within the broader property.

It is the intention of the developer to develop the above proposed project together with the already authorised project, i.e. the project is to be developed as a single 150MW facility in total.

This ecological specialist study details the ecological characteristics of the site and provides an assessment of the likely ecological impacts associated with the development of the site as a solar energy facility. Impacts are assessed for the preconstruction, construction, operation, and decommissioning phases of the development for the solar facility. As there are several facilities adjacent to one another within the Karoshoek Solar Valley Development site, the current assessment is only for the 50MW Ilanga CSP 5 facility, but the other facilities are indicated on the maps in order to demonstrate the full development footprint at the site as well as integrate the potential cumulative effects of the whole development on the site. All proposed facilities within the study area will eventually form part of the proposed larger Karoshoek Solar Valley Development. A variety of avoidance and mitigation measures associated with each identified impact are recommended to reduce the likely impact of the development, which should be included in the EMP for the development. The full scope of study is detailed below.

1.1 SCOPE OF STUDY

The scope of the study includes the following activities

- a description of the environment that may be affected by the activity and the manner in which the environment may be affected by the proposed project
- a description and evaluation of environmental issues and potential impacts (incl. using direct, indirect and cumulative impacts) that have been identified
- a statement regarding the potential significance of the identified issues based on the evaluation of the issues/impacts
- an indication of the methodology used in determining the significance of potential environmental impacts

- an assessment of the significance of direct indirect and cumulative impacts in terms of the following criteria :
 - the nature of the impact, which shall include a description of what causes the effect, what will be affected and how it will be affected
 - the extent of the impact, indicating whether the impact will be local (limited to the immediate area or site of development), regional, national or international
 - the duration of the impact, indicating whether the lifetime of the impact will be of a short-term duration (0-5 years), medium-term (5- 15 years), long-term (> 15 years, where the impact will cease after the operational life of the activity) or permanent
 - the probability of the impact, describing the likelihood of the impact actually occurring, indicated as improbable (low likelihood) probable (distinct possibility), highly probable (most likely), or definite (Impact will occur regardless of any preventable measures)
 - the severity/beneficial scale indicating whether the impact will be very severe/beneficial (a permanent change which cannot be mitigated/permanent and significant benefit with no real alternative to achieving this benefit) severe/beneficial (long-term impact that could be mitigated/long-term benefit) moderately severe/beneficial (medium- to long-term impact that could be mitigated/ medium- to long-term benefit), slight or have no effect
 - the significance which shall be determined through a synthesis of the characteristics described above and can be assessed as low medium or high
 - the status which will be described as either positive, negative or neutral
 - the degree to which the impact can be reversed
 - the degree to which the impact may cause irreplaceable loss of resources
 - the degree to which the impact can be mitigated
- a description and comparative assessment of all identified feasible alternatives
- recommendations regarding practical mitigation measures for potentially significant impacts, for inclusion in the Environmental Management Programme (EMPr)
- an indication of the extent to which the impact could be addressed by the adoption of mitigation measures
- a description of any assumptions, uncertainties and gaps in knowledge
- an environmental impact statement which contains :
 - a summary of the key findings of the environmental impact assessment;
 - an assessment of the positive and negative implications of the proposed activity;
 - a comparative assessment of the positive and negative implications of

identified alternatives

General Considerations:

- Disclose any gaps in information or assumptions made.
- Identify recommendations for mitigatory measures to minimise impacts.
- Outline additional management guidelines.
- Provide monitoring requirements, mitigation measures and recommendations in a table format as input into the Environmental Management Plan (EMP) for faunal related issues.

A description of the potential impacts of the development and recommended mitigation measures are to be provided which will be separated into the following project phases:

- Preconstruction
- Construction
- Operational Phase
- Decommissioning

1.2 ASSESSMENT APPROACH & PHILOSOPHY

The assessment will be conducted according to the EIA Regulations, published by the Department of Environmental Affairs 2014) as well as within the best-practice guidelines and principles for biodiversity assessment as outlined by Brownlie (2005) and De Villiers et al. (2005).

This includes adherence to the following broad principles:

- That a precautionary and risk-averse approach be adopted towards projects which may result in substantial detrimental impacts on biodiversity and ecosystems, especially the irreversible loss of habitat and ecological functioning in threatened ecosystems or designated sensitive areas: i.e. Critical Biodiversity Areas (as identified by systematic conservation plans, Biodiversity Sector Plans or Bioregional Plans) and Freshwater Ecosystem Priority Areas.
- Demonstrate how the proponent intends complying with the principles contained in Section 2 of the National Environmental Management Act, 1998 (Act No. 107 of 1998), as amended (NEMA), which, amongst other things, indicates that environmental management should.

- In order of priority aim to: avoid, minimise or remedy disturbance of ecosystems and loss of biodiversity;
- Avoid degradation of the environment;
- Avoid jeopardising ecosystem integrity;
- Pursue the best practicable environmental option by means of integrated environmental management;
- Protect the environment as the people's common heritage;
- Control and minimise environmental damage; and
- Pay specific attention to management and planning procedures pertaining to sensitive, vulnerable, highly dynamic or stressed ecosystems.

These principles serve as guidelines for all decision-making concerning matters that may affect the environment. As such, it is incumbent upon the proponent to show how proposed activities would comply with these principles and thereby contribute towards the achievement of sustainable development as defined by the NEMA.

In order to adhere to the above principles and best-practice guidelines, the following approach forms the basis for the study approach and assessment philosophy:

The study will include data searches, desktop studies, site walkovers / field survey of the property and baseline data collection, describing:

- A description of the broad ecological characteristics of the site and its surrounds in terms of any mapped spatial components of ecological processes and/or patchiness, patch size, relative isolation of patches, connectivity, corridors, disturbance regimes, ecotones, buffering, viability, etc.

In terms of **pattern**, the following will be identified or described:

Community and ecosystem level

- The main vegetation type, its aerial extent and interaction with neighbouring types, soils or topography;
- Threatened or vulnerable ecosystems (*cf. SA vegetation map/National Spatial Biodiversity Assessment, fine-scale systematic conservation plans, etc*).

Species level

- Red Data Book species (giving location if possible using GPS)
- The viability of an estimated population size of the RDB species that are present (include the degree of confidence in prediction based on availability of information and specialist knowledge, i.e. High=70-100% confident, Medium 40-70% confident, low 0-40% confident)

- The likelihood of other RDB species, or species of conservation concern, occurring in the vicinity (include degree of confidence).

Fauna

- Describe and assess the terrestrial fauna present in the area that will be affected by the proposed development.
- Conduct a faunal assessment that can be integrated into the ecological study.
- Describe the existing impacts of current land use as they affect the fauna.
- Clarify species of special concern (SSC) and that are known to be:
 - endemic to the region;
 - that are considered to be of conservational concern;
 - that are in commercial trade (CITES listed species);
 - or, are of cultural significance.
- Provide monitoring requirements as input into the Environmental Management Programme (EMP) for faunal related issues.

Other pattern issues

- Any significant landscape features or rare or important vegetation associations such as seasonal wetlands, alluvium, seeps, quartz patches or salt marshes in the vicinity.
- The extent of alien plant cover of the site, and whether the infestation is the result of prior soil disturbance such as ploughing or quarrying (alien cover resulting from disturbance is generally more difficult to restore than infestation of undisturbed sites).
- The condition of the site in terms of current or previous land uses.

In terms of **process**, the following will be identified or described:

- The key ecological “drivers” of ecosystems on the site and in the vicinity, such as fire.
- Any mapped spatial component of an ecological process that may occur at the site or in its vicinity (i.e. *corridors* such as watercourses, upland-lowland gradients, migration routes, coastal linkages or inland-trending dunes, and *vegetation boundaries* such as edaphic interfaces, upland-lowland interfaces or biome boundaries)
- Any possible changes in key processes, e.g. increased fire frequency or drainage/artificial recharge of aquatic systems.
- Furthermore, any further studies that may be required during or after the EIA process will be outlined.

- All relevant legislation, permits and standards that would apply to the development will be identified.
- The opportunities and constraints for development will be described and shown graphically on an aerial photograph, satellite image or map delineated at an appropriate level of spatial accuracy.

1.3 RELEVANT ASPECTS OF THE DEVELOPMENT

It is the intention of the developer to develop the above proposed project together with the already authorised project, i.e. the project is to be developed as a single 150MW facility in total. The Ilanga CSP 5 Facility is proposed to utilise the solar parabolic trough technology with a generation capacity of up to 150MW, and energy storage of up to 6 hours (using molten salts technology). The trough system will be comprised of parabolic collectors (i.e. trough-shaped reflectors which focus the solar radiation onto a receiver at its focal point), a receiver tube/heat collection element (i.e. a metal absorber containing the heat transfer fluid surrounded by a glass envelope which absorbs the solar energy received from the parabolic trough), a sun-tracking system (i.e. an electronic control system and associated mechanical drive system used to focus the reflector onto the sun), and support structure (i.e. holds the parabolic trough in accurate alignment with incoming solar radiation while resisting the effects of the wind). The collected heat energy in the heat transfer fluid is used to generate steam through a conventional heat exchanger system that is, in turn, used for electricity generation in a conventional steam turbine and generator.

The Ilanga CSP 5 will have a development footprint of up to 600 ha, to be placed within a broader site of ~5400ha and will include the following associated infrastructure:

- » On-site substation and associated 132kV power line linking the facility to the national electricity grid;
- » Access roads (main and internal access roads);
- » A water pipeline from the Orange River (including water treatment and storage reservoirs).

The above infrastructure will be **shared infrastructure** for all the proposed projects within the Karoshoek Solar Valley Development. This infrastructure is to be assessed within a separate Basic Assessment process.



Figure 1. The proposed development area of Illanga CSP 5 within the broader Karooshoek Solar Valley Development, including all sites and infrastructure alternatives (access roads (red and yellow), pipelines (pink) and power line route (green) and the power lines (black) that will link the facility to the ESKOM grid at the proposed ESKOM MTS substations (green)).

2 METHODOLOGY

2.1 DATA SOURCING AND REVIEW

Data sources from the literature consulted and used where necessary in the study includes the following:

Vegetation:

- Vegetation types and their conservation status were extracted from the South African National Vegetation Map (Mucina and Rutherford 2006) as well as the National List of Threatened Ecosystems (2011), where relevant.
- No Critical Biodiversity Areas (CBA) mapping or systematic conservation planning has been conducted for the area with the result that no detailed conservation priority area information is available for the area.

- Information on plant and animal species recorded for the Quarter Degree Square (QDS) 2821AD, BC, CB and DA was extracted from the SABIF/SIBIS database hosted by SANBI. This is a considerably larger area than the study area, but this is necessary to ensure a conservative approach as well as counter the fact that the site itself has probably not been well sampled in the past.
- The IUCN conservation status (Table 1) of the species in the list was also extracted from the database and is based on the Threatened Species Programme, Red List of South African Plants (2014).
- Freshwater and wetland information was extracted from the National Freshwater Ecosystem Priority Areas assessment, NFEPA (Nel et al. 2011).
- Important catchments and protected areas expansion areas were extracted from the National Protected Areas Expansion Strategy 2008 (NPAES).

Fauna

- Lists of mammals, reptiles and amphibians which are likely to occur at the site were derived based on distribution records from the literature and various spatial databases (ADU, SANBI's SIBIS and BGIS databases).
- Literature consulted includes Branch (1988) and Alexander and Marais (2007) for reptiles, Du Preez and Carruthers (2009) for amphibians, Friedmann and Daly (2004) and Skinner and Chimimba (2005) for mammals.
- The faunal species lists provided are based on species which are known to occur in the broad geographical area, as well as a preliminary assessment of the availability and quality of suitable habitat at the site.
- The conservation status of each species is also listed, based on the IUCN Red List Categories and Criteria version 2014.3 (See Figure 1) and where species have not been assessed under these criteria, the CITES status is reported where possible. These lists are adequate for mammals and amphibians, the majority of which have been assessed, however the majority of reptiles have not been assessed and therefore, it is not adequate to assess the potential impact of the development on reptiles, based on those with a listed conservation status alone. In order to address this shortcoming, the distribution of reptiles was also taken into account such that any narrow endemics or species with highly specialized habitat requirements occurring at the site were noted.

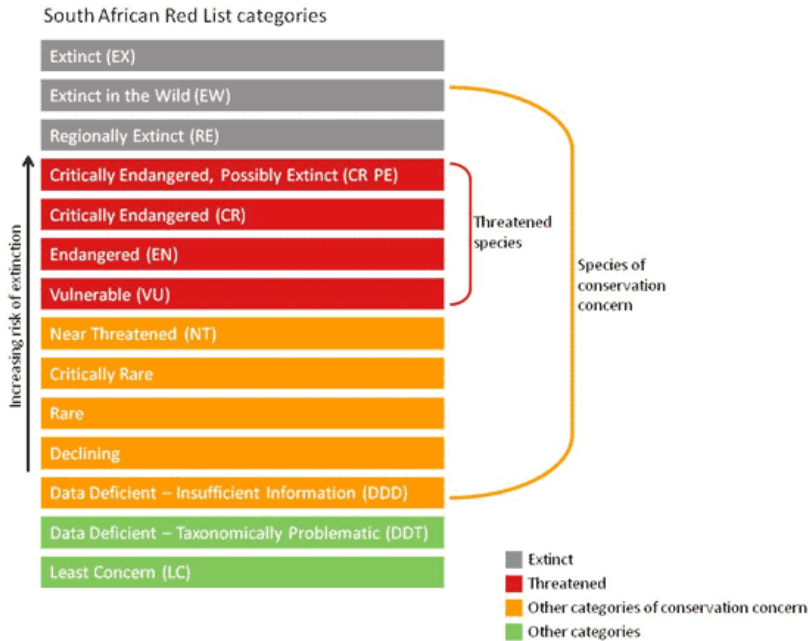


Figure 2. Schematic representation of the South African Red List categories. Taken from <http://redlist.sanbi.org/redcat.php>

2.2 SITE VISIT

The site has been visited twice, initially in April 2012 for the original Karoshoek development and secondly in April 2016 to verify the findings of the initial site visit and check the specific footprint of the current development. During the site visits, the different biodiversity features, habitat, and landscape units present at the site were identified and mapped in the field. Specific features visible on the satellite imagery of the site were also marked for field inspection and were verified and assessed during the site visit. This included features such as pans and rocky outcrops that were not visible from the access roads of the site and might have otherwise been missed. Walk-through-surveys were conducted within representative areas across the different habitats units identified and all plant and animal species observed were recorded. Active searches for reptiles and amphibians were also conducted within habitats likely to harbour or be important for such species. The presence of sensitive habitats such as wetlands or pans and unique edaphic environments such as rocky outcrops or quartz patches were noted in the field if present and recorded on a GPS and mapped onto satellite imagery of the site.

2.3 SENSITIVITY MAPPING & ASSESSMENT

An ecological sensitivity map of the site was produced by integrating the information collected on-site with the available ecological and biodiversity information available in the

literature and various spatial databases. This includes delineating the different habitat units identified in the field and assigning sensitivity values to the units based on their ecological properties, conservation value and the potential presence of species of conservation concern. The ecological sensitivity of the different units identified in the mapping procedure was rated according to the following scale:

- **Low** – Areas of natural or transformed habitat with a low sensitivity where there is likely to be a negligible impact on ecological processes and terrestrial biodiversity. Most types of development can proceed within these areas with little ecological impact.
- **Medium**- Areas of natural or previously transformed land where the impacts are likely to be largely local and the risk of secondary impact such as erosion low. These areas usually comprise the bulk of habitats within an area. Development within these areas can proceed with relatively little ecological impact provided that appropriate mitigation measures are taken.
- **High** – Areas of natural or transformed land where a high impact is anticipated due to the high biodiversity value, sensitivity or important ecological role of the area. These areas may contain or be important habitat for faunal species or provide important ecological services such as water flow regulation or forage provision. Development within these areas is undesirable and should only proceed with caution as it may not be possible to mitigate all impacts appropriately.
- **Very High** – Critical and unique habitats that serve as habitat for rare/endangered species or perform critical ecological roles. These areas are essentially no-go areas from a developmental perspective and should be avoided as much as possible.

In some situations, areas were also classified between the above categories, such as Medium-High, where it was deemed that an area did not fit well into a certain category but rather fell most appropriately between two sensitivity categories.

2.4 SAMPLING LIMITATIONS AND ASSUMPTIONS

The major potential limitation associated with the sampling approach is the narrow temporal window of sampling. Ideally, a site should be visited several times during different seasons to ensure that the full complement of plant and animal species present are captured. However, this is rarely possible due to time and cost constraints and therefore, the representivity of the species sampled at the time of the site visit should be critically evaluated.

The vegetation at the time of the site visits was in a reasonably good condition for sampling. It was late in the wet season and the grasses present were well grown out. It had also recently rained and a fair number of annuals and forbs were present, especially in run-on

environments. The shrubs were largely in the growing phase and were therefore in a state that they could be identified. The sampling of the perennial component of the vegetation is therefore seen to be reliable, although the diversity of annuals is likely to be greater in wetter years, but since there are very few listed species within such growth forms this is not considered a significant limitation.

The lists of amphibians, reptiles and mammals for the site are based on those observed at the site as well as those likely to occur in the area based on their distribution and habitat preferences. Several site visits have also been conducted in the wider area on adjacent properties at different times of the year and information on fauna observed in these areas is included where relevant. This represents a sufficiently conservative and cautious approach which takes the study limitations into account.

3 DESCRIPTION OF THE AFFECTED ENVIRONMENT- BASELINE

3.1 BROAD-SCALE VEGETATION PATTERNS

While there are a number of vegetation types within the broad area around the site, CSP 5 is restricted to the Bushmanland Arid Grassland vegetation type (Mucina & Rutherford 2006). Bushmanland Arid Grassland is an extensive vegetation type, being the second most extensive vegetation type in South Africa occupying an area of 45 478 km². It extends from around Aggeneys in the east to Prieska in the west. It is associated largely with red-yellow apedal (without structure), freely drained soils, with a high base status and mostly less than 300mm deep. Due to the arid nature of the unit which receives between 70 and 200 mm annual rainfall, it has not been significantly impacted by intensive agriculture and more than 99% of the original extent of the vegetation type is still intact. Mucina & Rutherford (2006) list 6 endemic species for the vegetation type which is a relatively low number given the extensive nature of the vegetation type. It is however poorly protected and less than 1% is within formal conservation areas. Although Mucina and Rutherford (2006) provide a list of typical and dominant species associated with this vegetation type, this is not repeated here and the actual vegetation as observed on the site is described in the next section.

Other vegetation types which occur in the area include Kalahari Karroid Shrubland, Lower Gariep Alluvial Vegetation, Lower Gariep Broken Veld and Gordonia Duneveld. Of these Lower Gariep Alluvial Vegetation is of significance as it is listed as Endangered as at least half this unit has been transformed for agriculture and large additional tracts have been severely affected by alien invasion. This vegetation type is however associated with the alluvium along the Orange River and would not be impacted by the current development which is some distance from the river itself. In addition, Lower Gariep Broken Veld is also considered sensitive at a broad level due to a high abundance of listed and protected species associated with this unit.

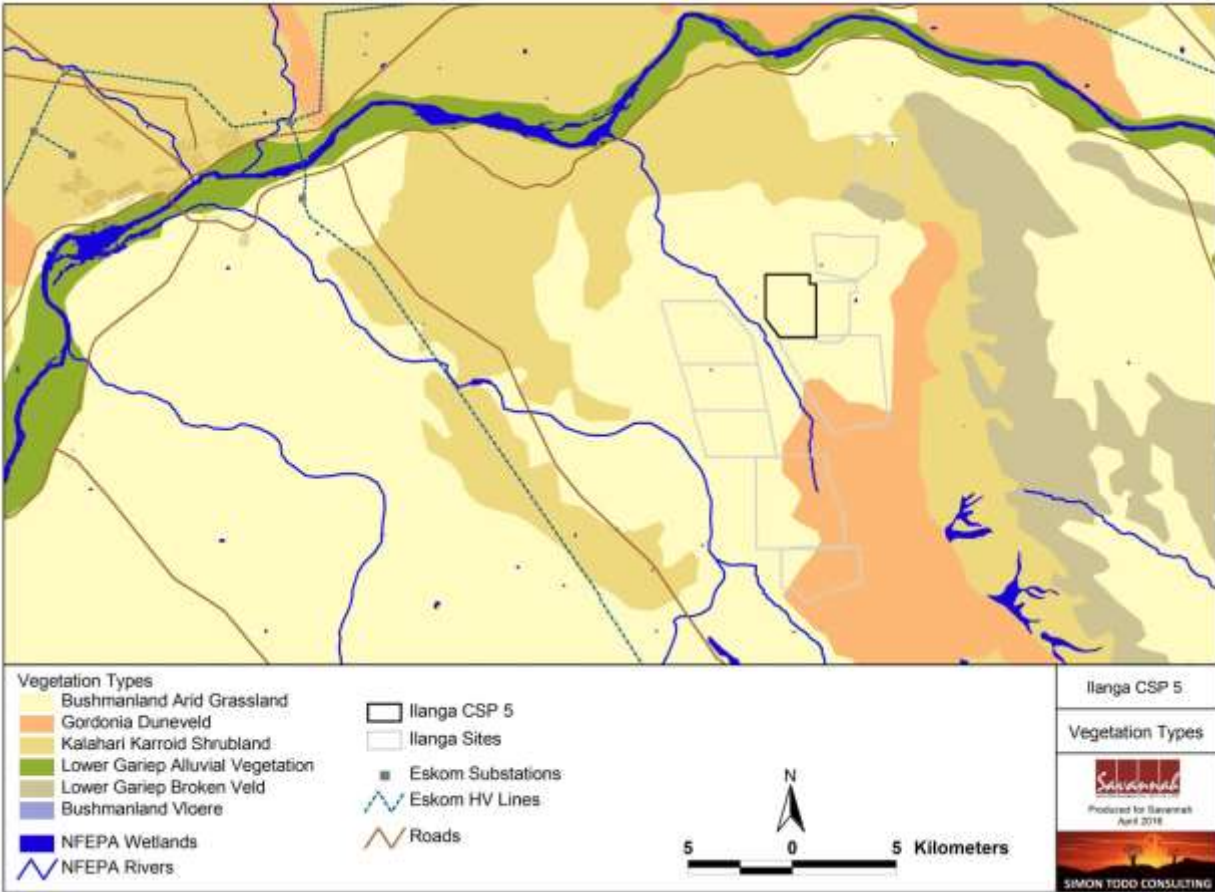


Figure 2. The vegetation in and around the Ilanga CSP 5 site, showing the other development areas within the Karoshhoek Solar Development. The vegetation map is an extract of the National Vegetation Map as produced by Mucina and Rutherford (2006).

3.2 SITE DESCRIPTION

Within the site, the major driver of vegetation composition is soil depth, which is generally associated with landscape position. The low hills and higher-lying plains are gravelly in nature and dominated by shrubs such *Zygophyllum dregeanum*, *Leucosphaera bainesii*, *Rhigozum trichotomum*, *Aptosimum spinecens*, *Barleria rigida*, *Boscia foetida* and *Phaeoptilum spinosum* with forbs and succulents such as *Euphorbia gariiepina*, *Oropetium capense*, *Kleinia longiflora*, *Blepharis mitrata* with grasses such as *Enneapogon scaber*, *Stipagrostis obtusa*, *S.ciliata* and *S.uniplumis*. However, these occupy a relatively small proportion of the site and majority of the site consists of in-filled flat-bottomed valleys on deeper red sands. These areas have a higher grass cover of species such as *Stipagrostis ciliata*, *S.uniplumis*, *S.amabilis* and *Schmidtia kalahariensis*. Trees and shrubs present in these areas include *Boscia foetida*, *Boscia albitrunca*, *Parkinsonia africana*, *Phaeoptilum*

spinosum, *Rhigozum trichotomum* and *Aptosimum albomarginatum*. Forbs include *Geigeria ornativa*, *Sesamum capense* and *Indigofera alternans* var. *alternans*. Overall, the affected area is considered moderate to high sensitivity largely on account of the high density of protected tree species present across most of the site. The density of *Boscia albitrunca* and *Boscia foetida* subsp. *foetida* across the site is estimated at around 5 trees per hectare, which translates to the potential loss of as many as 3000 *Boscia* trees across the 600ha development area. This is likely to result in an offset request from DAFF, as this exceeds the guideline for offset thresholds for protected trees in the Northern Cape. Apart from the trees lost to CSP 5, the potential for cumulative loss from all the different developments within the Karoshoek Solar Valley.



Typical vegetation within the Ilanga CSP 5 development area consists of a grassy shrubland dominated by *Phaeoptilum spinosum* and *Rhigozum trichotomum*, with scattered *Boscia albitrunca* and *Boscia foetida* subsp. *foetida* trees.



Large parts of the site consist of deeper sands which have a higher cover and a higher density of trees including the protected *Boscia albitrunca* which may reach densities of up to 8 trees/ha in some parts of the site.



Dense vegetation in low-lying parts of the site, with a very high density of *Boscia albitrunca* and dense stands of *Rhigozum trichotomum*.

3.3 PROTECTED AND LISTED PLANT SPECIES

Although the diversity of listed species at the site is low, the density of protected trees is high. Species of concern observed within the site includes *Boscia albitrunca* which is nationally protected, *Hoodia gordonii* which is red-listed, and a number of provincially protected species including *Aloe claviflora*, *Adenium oleifolium* and *Boscia foetida* subsp. *foetida*. *Acacia erioloba* is also present in the area but was not observed within the development area. As the site is large, some individuals of these species may be present but at a low density or as small plants, as they were not observed during the site visit even though the site is flat and open.

In terms of the actual likely numbers of individuals of protected species likely to be impacted by the development, the main impact would be on *Boscia albitrunca* and *Boscia foetida* and these occur at an estimated density of 5 trees/ha giving rise to the potential loss of many as 3000 or more trees from the full 600ha development area. This is certain to raise some concern from DAFF and should this site be development, engagement with DAFF and DENC regarding the loss of the trees will need to be entered into.

Red-listed species that are known to occur in the area, but which were not observed include *Brachystelma huttonii* (Rare) and *Pelargonium reniforme* subsp. *reniforme* (Data Deficient Data).

Table 2. Red-listed species which may occur within the CSP 5 site, including their IUCN status and the likelihood that they occur at the site. This does not include provincially or nationally protected species which are present at the site.

Family	Species	IUCN Status	Likelihood
ASPHODELACEAE	<i>Aloe dichotoma</i>	VU	Low
MESEMBRYANTHEMACEAE	<i>Dinteranthus wilmotianus</i>	NT	Low
AMARYLLIDACEAE	<i>Crinum bulbispermum</i>	Declining	Low
FABACEAE	<i>Acacia erioloba</i>	Declining	Confirmed
APOCYNACEAE	<i>Hoodia gordonii</i>	DDD	Confirmed
GERANIACEAE	<i>Pelargonium reniforme</i> subsp. <i>reniforme</i>	DDD	Low
ASTERACEAE	<i>Gymnostephium ciliare</i>	DDT	Low
ASTERACEAE	<i>Senecio monticola</i>	DDT	Low

3.4 CUMULATIVE IMPACT & BROAD-SCALE PROCESSES

No fine-scale conservation planning has been done in the district and as a result, no Critical Biodiversity Areas have been defined. The site also does not fall within areas that have identified as focus areas under the National Protected Areas Expansion Strategy, indicating

that the development areas do not occur within areas that have been identified as being important for biodiversity maintenance at a landscape scale. There is however a large amount of solar development in the area, which raises the possibility of significant cumulative impact in the area. The DEA map available showing proposed projects does not however show the actual extent of the footprints of the development in most cases and shows the entire affected cadaster, which may have one or several solar developments on it. As a result, the actual extent of development is most likely significantly less than suggested by the DEA map. Nevertheless, cumulative impacts in the area are likely to increase significantly in the future should all projects be developed. The main cumulative impact of development in the area is likely to be habitat loss and the disruption of landscape connectivity for fauna. The contribution of development in the Karoshoek area to the impact on protected plant species is likely to be low as the open plains habitat in the area contains few species of conservation significance and the density of protected tree species is also relatively low and concentrated along the larger drainage lines.

The large amount of development in the Karoshoek area and beyond would potentially create a significant impact on landscape connectivity in the area. However, in reality, this is not likely to occur, as there are many ridges in the area that would not be developed, which would facilitate landscape connectivity. In addition, there are also some large drainage lines that would also not be developed and which would be used by species which avoid the upland areas. Therefore, development in the Karoshoek area is likely to impact on landscape connectivity at a local level only and there are still likely to be sufficient intact areas remaining at a broader scale to allow for broad-scale faunal movement. However, in order to facilitate this, it is important there are not extensive electrified fences in the area and each development should preferably be individually fenced.

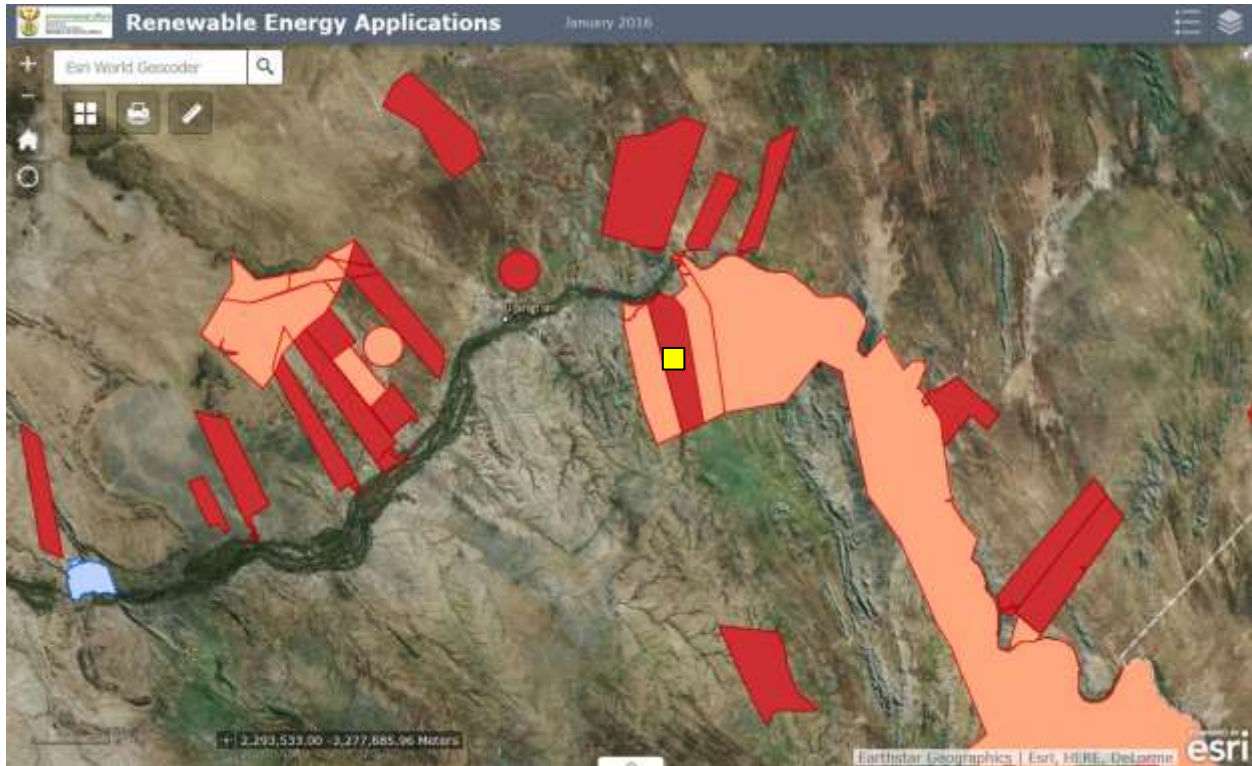


Figure 3. DEA-registered projects as at January 2016 for the Uppington area, illustrating the very high density of proposed solar energy development in the area. The yellow block indicates the location of the proposed Ilanga CSP 5 development site.

3.5 FAUNAL COMMUNITIES

Mammals

The site falls within the distribution range of 46 terrestrial mammals, indicating that the mammalian diversity at the site is likely to be moderate to low. At a broad scale, it is likely that a large proportion of these species occur at the area. However, within the affected development area, mammalian diversity is likely to be quite low on account of the limited range of habitats available. No species associated with rocky outcrops are likely to occur within the proposed development area, which would significantly reduce the number of the species that would be directly affected. Mammal species observed at the site and in the area include Black-backed Jackal, African Wildcat, Cape Fox, Rock Hyrax, South African Ground Squirrel, Steenbok, Springbok, Gemsbok, Cape Porcupine, Yellow Mongoose, Cape Hare, Aardvark, and Round-eared Elephant Shrew.

As the typical arid grasslands and shrublands of the site are widely available in the area, as well as at a broader scale, the impacts would be local in nature and it is not likely that the long-term viability of any populations of terrestrial mammals would be compromised by the

development. Three listed terrestrial mammals may occur at the site, the Honey Badger *Mellivora capensis* (Endangered), Brown Hyaena *Hyaena brunnea* (Near Threatened) and Black-footed cat *Felis nigripes* (Vulnerable). Although the area is used for livestock production, human activity in the area is low and it is possible that all three listed species occur in the area. Some habitat loss for mammals is an inevitable consequence of the development but is not likely to be of broader significance. Faunal disturbance and human presence would be highest during the construction phase and terrestrial faunal impacts are also likely to be largely concentrated to this phase of the development.

Reptiles

According to the SARCA database, 40 reptile species are known from the area suggesting that the reptile diversity within the site is likely to be moderate to low. Species observed in the wider area include the Karoo Girdled Lizard *Karusasaurus polyzonus*, Western Rock Skink *Trachylepis sulcata sulcata* and the Namaqua Mountain Gecko *Pachydactylus montanus* which are associated with rocky outcrops, and Ground Agama *Agama aculeata aculeata* and the Spotted Sand Lizard *Pedioplanis lineoocellata*, which are fairly widespread on the plains. As there are no large rocky outcrops within the proposed development area, species associated with rocky habitats are not likely to occur in the area and would not be impacted by the development. As with mammals, the development is likely to result in some local habitat loss for reptiles but as there are not range-restricted reptiles which would occur in the affected area, the impacts are not likely to be of broader significance. The development would be likely to create some novel habitats for reptiles, which would potentially benefit a limited number of species which could take advantage of the novel habitats created within the development area. This is likely to be restricted to species such as geckos and agamas, which would utilise the buildings and other vertical infrastructure of the development. This would however be a very limited number of species and is not considered an overall positive outcome.

Amphibians

The site lies within the distribution range of 10 amphibian species. The only listed species which may occur in the area is the Giant Bullfrog *Pyxicephalus adspersus* which is listed as Near Threatened. This species is associated with ephemeral pans and there do not appear to be any pans of sufficient size to support this species at the site. Those amphibians which require perennial water are likely to be restricted to the vicinity of the Orange River and the plains of the site are likely to contain low amphibian diversity and are not likely to be highly significant from an amphibian perspective. As there are no natural perennial water sources at the site, it is likely that amphibian abundance is generally low and restricted largely to those species which are relatively independent of water such as the Karoo Toad *Vandijkophrynus garipeensis*. Overall, given the low likely abundance of amphibians at the site, impacts on amphibians are likely to be local in extent and of low significance.

3.6 SITE SENSITIVITY ASSESSMENT

The sensitivity map of the larger site for the 150MW facility is illustrated below in Figure 4. The majority of the site consists of relatively dense shrubland dominated by *Rhigozum trichotomum* considered to be medium to high sensitivity on account of the abundance of protected trees within these areas. Although there are no areas within the site that are considered no go or of very high sensitivity, the high density of protected trees within the site and the overall cumulative impact on these species is a significant issue for the development of the site. Overall, the site is not considered highly suitable for development given the preponderance of lowland areas with dense vegetation cover and dense *Boscia* populations.

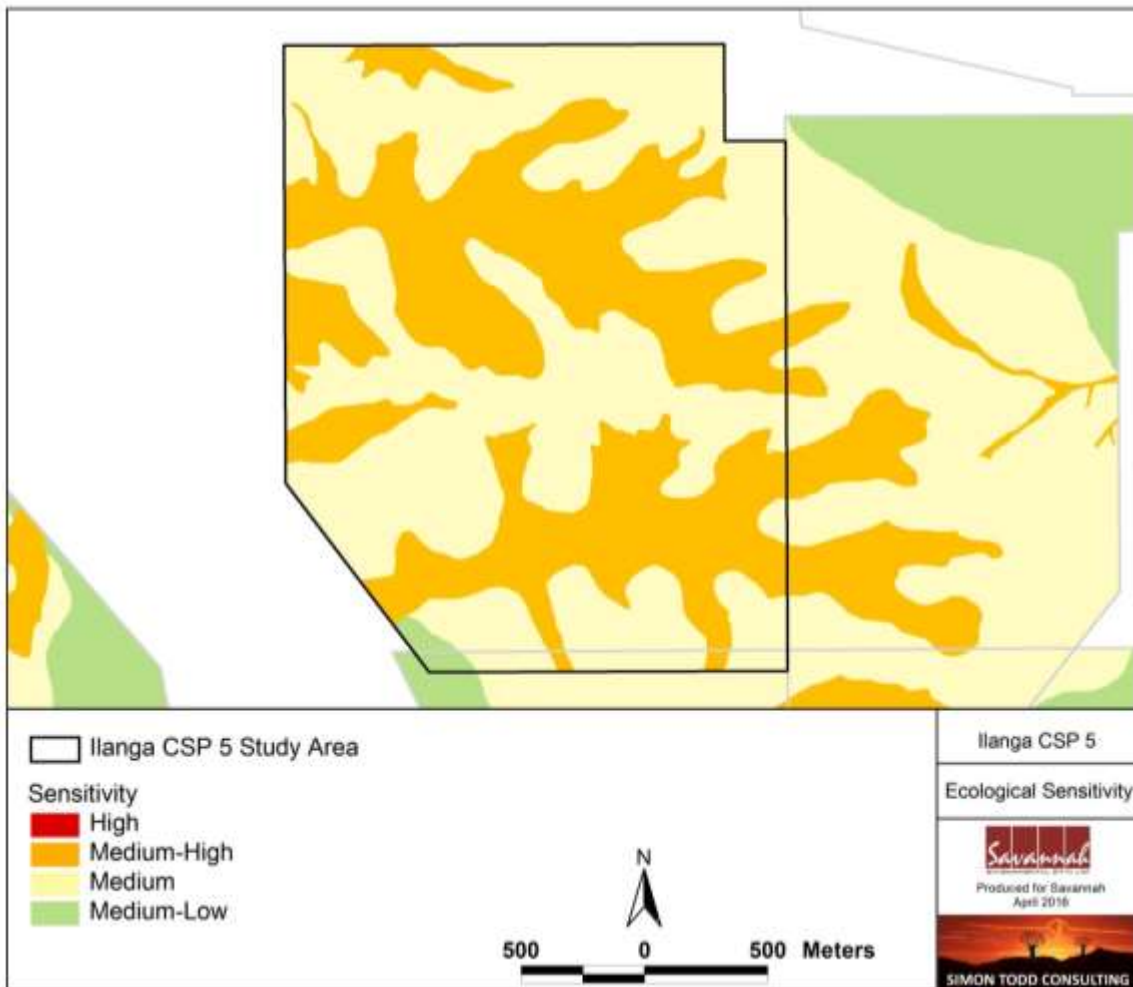


Figure 4. Ecological sensitivity map of the CSP 5 site, illustrating that the majority of the site is considered medium to medium-high sensitivity.

4 IDENTIFICATION & NATURE OF IMPACTS

4.1 IDENTIFIED IMPACTS

The development of the Ilanga CSP 5 project is likely to result in a variety of impacts, associated largely with the disturbance, loss and transformation of intact vegetation and faunal habitat due to hard infrastructure such as the reflector arrays, roads, operations buildings etc. The site is however adjacent to and would be part of the larger CSP site Karoshoek development and as such, the impacts associated with the development would be lower than if the development was a stand-alone development within an area of no existing development. The contribution of the development to cumulative impacts is however potentially higher as a result of the presence of other approved developments in the immediate area. The following impacts are identified as the major impacts associated with the development and which are assessed for the preconstruction, construction and operational phases of the development.

Impacts on vegetation and protected plant species

Some loss of vegetation is an inevitable consequence of the development. The vegetation types within the affected area are however widespread and the loss of even a few thousand hectares of these vegetation types would be of relatively minor significance when considered at a broad scale. However, the potential impacts on protected plant species is of greater significance given the abundance of *Boscia* trees within the site.

Soil erosion and associated degradation of ecosystems

The large amount of disturbance created during construction will leave the site vulnerable to soil erosion. The large amount of hardened surface created by the development will generate significant amounts of runoff during occasional storm events and this will pose a potential erosion hazard to those areas receiving the runoff. As CSP trough development usually requires that the development footprint is sterilized (completely cleared), these areas would generate a lot more runoff than intact vegetation. As a result, the receiving areas would be vulnerable to erosion and regular monitoring to ensure that erosion problems are addressed would be required.

Increased Alien Plant Invasion Risk

The disturbance created during the construction phase of the project would leave the site highly vulnerable to invasion by alien plant species, which would impact diversity and ecological processes within the area. Alien species that were observed on site

and which might increase in response to the disturbance include *Prosopis glandulosa*, *Salsola kali* and *Flaveria bidentis*.

Direct Faunal impacts

Construction and operational phase noise, pollution, disturbance and human presence will be detrimental to fauna. Sensitive and shy fauna would move away from the area as a result of the noise and human activities present, while some slow-moving species might not be able to avoid the construction activities and might be killed. Some mammals or reptiles such as tortoises would be vulnerable to illegal collection or poaching during the construction phase as a result of the large number of construction personnel that are likely to be present. The development areas would also amount to habitat loss for most fauna, although there are some species which would potentially increase in the developed areas. Depending on how the development areas were fenced off, the fencing would probably also restrict animal movement and disrupt the connectivity of the landscape for fauna.

Impacts on Broad-Scale Ecological Processes and Loss of Landscape Connectivity

As there are several preferred bidder projects under development in the area as well as a number of approved renewable energy developments in the area, the development of the current site will contribute towards cumulative impacts, particularly the loss of landscape connectivity. The site is likely to be fenced and the cleared parts of the site are also likely to be hostile to many smaller fauna which will prevent or impede their movement across the landscape.

4.2 ASSESSMENT OF IMPACTS

Planning & Construction Phase Impacts

Impact 1: Impacts on vegetation & protected plant species during construction

Impact Nature: Impacts on vegetation and protected plant species will occur due to vegetation clearing and disturbance associated with the construction of the facility.
 The density of protected species present within the site is high with large amounts of *Boscia albitrunca* and *Boscia foetida* present within the site and as a result, the overall post-mitigation impacts are likely to be **Medium to High** due to the loss of large numbers of these trees.

	Without Mitigation	With Mitigation
Extent	Local (1)	Local (1)
Duration	Long-term (4)	Long-term (4)
Magnitude	Medium-High (7)	Medium (5)
Probability	Certain (5)	Certain (5)

Significance	High (60)	Medium (50)
Status	Negative	Negative
Reversibility	Low	Low
Irreplaceable loss of resources	No	No
Can impacts be mitigated?	Impacts on protected plant species cannot be well mitigation as the trees cannot be translocated or avoided and the affected trees are likely to the hundreds of years old.	
Mitigation	<ul style="list-style-type: none"> • Preconstruction walk-through of the facility in order to locate species of conservation concern that can be translocated prior to construction. • Vegetation clearing to commence only after walk through has been conducted and necessary permits obtained. • Preconstruction environmental induction for all construction staff on site to ensure that basic environmental principles are adhered to. This includes awareness as to no littering, appropriate handling of pollution and chemical spills, avoiding fire hazards, minimising wildlife interactions, remaining within demarcated construction areas etc. • ECO to provide supervision and oversight of vegetation clearing activities near sensitive areas. • Vegetation clearing to be kept to a minimum. No unnecessary vegetation to be cleared. • Construction activities are to be restricted to the development footprint. No disturbance of vegetation may occur outside of the demarcated development area. • All construction vehicles should adhere to clearly defined and demarcated roads. No off-road driving to be allowed. • Temporary lay-down areas should be located within the development footprint or within areas that have been identified as being of low sensitivity. These areas should be rehabilitated after use. 	
Cumulative Impacts	The potential for cumulative impacts is high given the abundance of applications in the area. However, the affected vegetation type is very widespread and the direct loss of the vegetation type would not be highly significant. Therefore, cumulative impacts as a result of loss of vegetation are expected to be low. However, there are large numbers of protected tree species, especially <i>Boscia albitrunca</i> in the study area as well as within some of the other development sites within the Karoshoek area. The cumulative impact on protected trees in the area would be high should several of the developments become preferred bidders.	

Residual Impacts	Some residual habitat loss will result from the development, equivalent to the operational footprint of the facility (600ha).
-------------------------	---

Impact 2. Faunal Impacts During Construction.

Impact Nature: Disturbance, transformation and loss of habitat will have a negative effect on resident fauna during construction.		
There are fauna resident within the site and these will be impacted during construction of the facility. However, faunal diversity and density within the site is low and post mitigation impacts are likely to be Low and of Local significance only.		
	Without Mitigation	With Mitigation
Extent	Local (1)	Local (1)
Duration	Short-term (2)	Short-term (2)
Magnitude	Medium (6)	Medium (4)
Probability	Highly Probable (4)	Highly Probable (4)
Significance	Medium (36)	Low (28)
Status	Negative	Negative
Reversibility	Medium	Medium
Irreplaceable loss of resources	No	No
Can impacts be mitigated?	Large amounts of noise and disturbance at the site during construction is largely unavoidable.	
Mitigation	<ul style="list-style-type: none"> • All personnel should undergo environmental induction with regards to fauna and in particular awareness about not harming or collecting species such as snakes, tortoises, and owls which are often persecuted out of superstition. • Any fauna threatened by the construction activities should be removed to safety by the ECO or appropriately qualified environmental officer. An appropriate permit must be obtained for the relocation of fauna. • Regular dust suppression during construction, especially along access roads which are used frequently. • No construction activity should be allowed at the site between sunset and sunrise. • All construction vehicles should adhere to a low speed limit to avoid collisions with susceptible species such as snakes and tortoises. • All hazardous materials should be stored in the appropriate manner to prevent contamination of the site. Any accidental chemical, fuel and oil spills that occur at the site should be cleaned up in the appropriate manner as related to the nature of the spill. 	

Cumulative Impacts	During the construction phase, the activity would contribute to cumulative fauna disturbance and disruption in the area, but the impact would be of local extent and not of high significance with mitigation.
Residual Impacts	There will be some residual impact as the facility will persist past the construction phase.

Operational Phase Impacts

Impact 1. Increased alien plant invasion

Impact Nature: Alien plants are likely to invade the site as a result of the large amounts of disturbance created during operation. Current levels of plant invasion at the site are low. Alien species such as <i>Prosopis</i> are however present and would potentially invade the site along with other typical weedy species such as <i>Salsola kali</i> and <i>Flaveria bidentis</i> .		
	Without Mitigation	With Mitigation
Extent	Local (1)	Local (1)
Duration	Long-term (4)	Medium-term (3)
Magnitude	Medium (5)	Low (3)
Probability	Probable (4)	Improbable (3)
Significance	Medium (40)	Low (21)
Status	Negative	Negative
Reversibility	Moderate	High
Irreplaceable loss of resources	No	No
Can impacts be mitigated?	Yes	
Mitigation	<ul style="list-style-type: none"> • Due to the disturbance at the site as well as the increased runoff generated at the site, alien plant species are likely to be a long-term problem at the site and a long-term control plan will need to be implemented. • Rehabilitation of cleared areas with indigenous species after construction to reduce alien invasion potential. • Regular monitoring for alien plants within the development footprint. • Regular alien clearing should be conducted using the best-practice methods for the species concerned. The use of herbicides should be avoided as far as possible and should only be used for woody species which re-sprout following manual control. 	
Cumulative Impacts	Alien invasion would contribute to cumulative habitat degradation in the area, but if alien species are controlled then cumulative impact from alien species would not be significant.	

Residual Impacts	If alien species at the site are controlled, then there will be very little residual impact.
-------------------------	--

Impact 2. Direct Faunal Impacts During Operation.

Impact Nature: The operation and presence of the facility may lead to disturbance or persecution of fauna.		
It is likely that some fauna including Ground Squirrels, Yellow Mongoose and Gerbils are likely to increase or settle within the development area. These should be tolerated and allowed to move about the facility. In addition if the facility is to be fenced with electrical fencing, this should be on the inside and not the outside of the facility.		
	Without Mitigation	With Mitigation
Extent	Local (1)	Local (1)
Duration	Long-term (4)	Long-term (4)
Magnitude	Medium (5)	Low (3)
Probability	Probable (3)	Probable (2)
Significance	Medium (30)	Low (16)
Status	Negative	Negative
Reversibility	Moderate	Moderate
Irreplaceable loss of resources	No	No
Can impacts be mitigated?	To some extent, but not that part related to the presence and operation of the facility.	
Mitigation	<ul style="list-style-type: none"> • No unauthorised persons should be allowed onto the site. • Undesirable and problem fauna such as snakes or fauna threatened by the maintenance and operational activities should be removed to a safe location. An appropriate permit must be obtained for the relocation of fauna. • The collection, hunting or harvesting of any plants or animals at the site should be strictly forbidden. • If parts of the site must be lit at night for security purposes, this should be done with low-UV type lights (such as most LEDs), which do not attract insects. • All hazardous materials should be stored in the appropriate manner to prevent contamination of the site. Any accidental chemical, fuel and oil spills that occur at the site should be cleaned up in the appropriate manner as related to the nature of the spill. • All vehicles accessing or on the site should adhere to a low speed limit (30km/h max) to avoid collisions with susceptible species such as snakes and tortoises. 	

Cumulative Impacts	The development would contribute towards habitat loss for fauna in the area as the development area would not be available to most fauna during operation. Although there are currently few preferred bidders in the immediate area, there are a number of active applications that would potentially contribute to cumulative habitat loss and disturbance in the area. There is currently however still a large amount of intact habitat in the broader area which can be used by fauna and no highly significant impacts are therefore likely.
Residual Impacts	The facility will be operational for at least 20 years and impact sources such as disturbance will persist for the operational lifetime of the facility and cannot be mitigated, although many fauna would become habituated to these disturbance sources and this would operate only at a local level. The impact will be largely removed after decommissioning although some habitat degradation is likely to persist for some decades as it is not likely that the affected areas can be rehabilitated to their preconstruction state..

Impact 3. Impacts on Broad-Scale Ecological Processes and Loss of Landscape Connectivity

Impact Nature: As there are several other preferred bidders as well as authorised renewable energy developments in the area, the operation of the site will contribute towards the loss of landscape connectivity. The facility will prevent fauna from moving through the area and decrease landscape connectivity at the site level. However, the surrounding landscape is still largely intact and the magnitude of impact would be moderate as a result although additional development will increasingly impact connectivity.		
	Without Mitigation	With Mitigation
Extent	Local (2)	Local (2)
Duration	Long-term (4)	Long-term (4)
Magnitude	Medium (4)	Low (3)
Probability	Highly Probable (4)	Highly Probable (4)
Significance	Medium (40)	Medium (36)
Status	Negative	Negative
Reversibility	Moderate	Moderate
Irreplaceable loss of resources	No	No
Can impacts be mitigated?	Only partly as much of the impact stems from the presence and operation of the facility.	
Mitigation	<ul style="list-style-type: none"> • The development footprint should be kept to a minimum and natural vegetation should be encouraged to return to disturbed areas where possible. • An open space management plan should be developed for the site, which should include management of biodiversity within the fenced 	

	<p>area, as well as that in the adjacent rangeland.</p> <ul style="list-style-type: none"> No fauna should be persecuted within the facility area and any problem animals should be humanely captured and released outside the facility area.
Cumulative Impacts	The development will contribute to cumulative impact, but the contribution would be about 415ha which is considered moderately significant in context of the largely intact surrounding landscape and would add to the habitat loss in the surrounding area. It is however also important to note that the development occurs within an area with a large number of other proposed developments, but at this point it is not possible to know which or how many of these would actually get built.
Residual Impacts	There will be some residual impact as it is the presence of the facility that generates the impact and this cannot be mitigated. However, after decommissioning the impact will be removed provided that the area is rehabilitated.

Impact 4. Reduced ability to meet conservation obligations & targets

Impact Nature: The loss of unprotected vegetation types on a cumulative basis from the broad area may impact the country’s future ability to meet its conservation targets. The Bushmanland Arid Grassland vegetation type is extensive and the extent of habitat loss from the development would not significantly impact the remaining extent of this vegetation type. Even at a local scale, there are no features within or near the site that would be affected and which would be considered a conservation priority. Consequently the impact of the development on the future conservation potential of the area is considered **low**.

	Without Mitigation	With Mitigation
Extent	Regional (2)	Regional (2)
Duration	Long-term (2)	Long-term (2)
Magnitude	Medium (5)	Medium-Low (4)
Probability	Probable (3)	Improbable (2)
Significance	Low (27)	Low (16)
Status	Negative	Negative
Reversibility	Moderate	Moderate
Irreplaceable loss of resources	No	No
Can impacts be mitigated?	Partly as the development will impact the site on a long-term basis and it is not likely that it can be fully rehabilitated.	
Mitigation	<ul style="list-style-type: none"> The development footprint should be kept to a minimum and natural vegetation should be encouraged to return to disturbed areas as far as possible. An open space management plan should be developed for the site, 	

	which should include management of biodiversity within the fenced area, as well as that in the adjacent rangeland.
Cumulative Impacts	The development would contribute to cumulative habitat loss within the affected vegetation types. However, the Bushmanland Arid Grassland is a very extensive vegetation type and cumulative impacts would be evident at a local level only. In addition, there are no sensitive features within the development footprint that would be a high priority target for conservation.
Residual Impacts	The impact will last for as long as the facility is present and well after that as well because it is not likely that the full biodiversity value of the affected area can be fully restored after decommissioning.

Decommissioning & Closure

Impact 1. Faunal Impacts During Decommissioning

Impact Nature: Disturbance or persecution of fauna during the decommissioning phase may occur. The operation of heavy machinery and human presence at the site during decommissioning would impact fauna.		
	Without Mitigation	With Mitigation
Extent	Local (1)	Local (1)
Duration	Short-term (2)	Short-term (2)
Magnitude	Medium (4)	Low (2)
Probability	Probable (3)	Improbable (3)
Significance	Low (21)	Low (15)
Status	Negative	Negative
Reversibility	High	High
Irreplaceable loss of resources	No	No
Can impacts be mitigated?	Yes.	
Mitigation	<ul style="list-style-type: none"> • Site access to be controlled and no unauthorised persons should be allowed onto the site. • The collection, hunting or harvesting of any plants or animals at the site should be strictly forbidden. • Undesirable and problem fauna such as snakes or fauna threatened by the maintenance and operational activities should be removed to a safe location. An appropriate permit must be obtained for the relocation of fauna. • Any accidental chemical, fuel, and oil spills that occur at the site during decommissioning should be cleaned up in the appropriate 	

	<p>manner as related to the nature of the spill.</p> <ul style="list-style-type: none"> No open excavations, holes or pits should be left at the site as fauna can fall in and become trapped. All disturbed areas should be rehabilitated with a cover of indigenous grass.
Cumulative Impacts	Cumulative impacts at the decommissioning phase are likely to be low.
Residual Impacts	With avoidance measures there should be no residual impact on fauna.

Impact 2. Increased alien plant invasion following decommissioning

<p>Impact Nature: Alien plants are likely to invade the site as a result of disturbance created during decommissioning.</p> <p>This impact would be likely to persist from several years after decommissioning until such time as a cover of indigenous species has recovered. The area is however very arid and this limits which species would potentially invade the site.</p>		
	Without Mitigation	With Mitigation
Extent	Local (1)	Local (1)
Duration	Long-term (4)	Medium-term (3)
Magnitude	Medium (5)	Low (3)
Probability	Probable (3)	Improbable (3)
Significance	Medium (30)	Low (21)
Status	Negative	Negative
Reversibility	Moderate	High
Irreplaceable loss of resources	No	No
Can impacts be mitigated?	Yes	
Mitigation	<ul style="list-style-type: none"> Due to the disturbance at the site during decommissioning, alien plant species are likely to invade the site and a long-term control plan will need to be implemented for several years after decommissioning Regular monitoring (bi-annual) for alien plants within the development footprint for 2-3 years after decommissioning. Regular alien clearing should be conducted using the best-practice methods for the species concerned. The use of herbicides should be avoided as far as possible. Cleared and disturbed areas should be revegetated with a cover of indigenous grass or shrubs. 	
Cumulative Impacts	Alien invasion would contribute to cumulative habitat degradation in the area, but if alien species are controlled then, then cumulative impacts from alien	

	species would not be significant.
Residual Impacts	If alien species at the site are controlled, then there will be very little residual impact

Cumulative Impacts

Impact 1. Cumulative habitat loss and impacts on broad-scale ecological processes from solar development in the area

<p>Impact Nature: The facility would contribute to cumulative habitat loss and broad-scale ecological processes in the area.</p> <p>There are a number of approved and planned facilities in the area and these will ultimately result in significant habitat loss in the area. However, currently, the location of these facilities is within lower sensitivity open plains and the important features of the area have not been significantly impacted to date. This may however change and the current site is located within an area that is deemed to be of above-average significance for faunal connectivity. Due to the arid nature of the area, it is important that the mobility of fauna in the area is not impacted as many arid fauna respond to the unpredictability of these systems by moving extensively across the landscape. These impacts can be reduced by ensuring that movement corridors are not blocked off and fauna are still able to move about the landscape and are not impeded by extensive tracts of electrified fencing.</p>		
	Cumulative Contribution of Proposed Project	Cumulative Impact without Proposed Project
Extent	Regional (2)	Regional (2)
Duration	Long-term (4)	Long-term (4)
Magnitude	Medium (6)	Low (5)
Probability	Highly Probable (4)	Probable (4)
Significance	Medium (48)	Medium (44)
Status	Negative	Negative
Reversibility	Moderate	Moderate
Irreplaceable loss of resources	No	No
Can impacts be mitigated?	Under the current layout there is little that can be done to effectively mitigate this impact as it is the presence of the facility and the loss of the intact vegetation within the footprint that generates the impact.	
Mitigation	<ul style="list-style-type: none"> • The development footprint should be kept to a minimum and natural vegetation should be encouraged to return to disturbed areas. • An open space management plan should be developed for the site, which should include management of biodiversity within the fenced area, as well as that in the adjacent rangeland. • No fauna should be persecuted within the facility area and any problem animals should be humanely captured and released outside 	

	<p>the facility area.</p> <ul style="list-style-type: none">• It is important there are not extensive electrified fences in the area and each development should preferably be individually fenced so that fauna can pass between the different facilities.
--	---

5 CONCLUSION & RECOMMENDATIONS

The Ilanga CSP 5 site consists largely of deeper soils associated with in-filled valleys of dense *Rhigozum trichotomum* and *Stipagrostis* with conspicuous stands of *Boscia albitrunca*. As many as 3000 *Boscia* trees would be impacted by the development, which is considered a significant loss to the local population. This exceeds the guideline loss for triggering an offset from DAFF and direct engagement with DAFF will need to be started should the developer wish to develop the site. Furthermore, the additional development sites in the Karoshoek Solar Valley would contribute significant additional loss of trees from the area and the overall cumulative impact is considered to be high in the local context. *Boscia albitrunca* is however widespread and the loss of the trees from the area would not be significant at the national scale.

Due to the relatively homogenous nature of the habitat for fauna, faunal diversity is likely to be moderate to low and faunal species of concern are not likely to be abundant at the site. There are no features at the site considered to be very high sensitivity or represent a no go area, although the cumulative impact on the *Boscia* trees is considered to be a significant local impact.

Due to the large amount of development proposed in the area, the development of the site will contribute to cumulative impact. However, the affected Bushmanland Arid Grassland vegetation type is extensive and the extent of habitat loss resulting from the development would not significantly impact the remaining extent of this vegetation type, or the availability of this habitat in the broader area. However, the site does not consist of typical Bushmanland Arid Grassland and rather consists of densely vegetated in-filled valleys which are considered to be of above-average significance for fauna and more vulnerable to cumulative impact due to the limited extent of the affected habitat. Consequently the impact of the development on habitat loss, fragmentation and the future conservation potential of the area is considered of moderate to high overall magnitude and of local significance.

Although there are no highly sensitive features within the development footprint the abundance of protected trees is high and the overall impact of the development cannot be mitigated to a low level as a result. The loss of the protected trees is considered to be a significant local impact but would not be highly significant at the national scale. Should the development of the site proceed, active engagement of DAFF would be required to deal with

the permitting and possible offsetting required for the loss of the *Boscia* trees at the site. Overall, and with the suggested mitigation measures implemented, the impacts of the development are likely to be of moderate significance and no impacts of high significance are likely.

6 *ACTIVITIES FOR INCLUSION THE DRAFT EMP*

An Environmental Management Programme (EMP) provides a link between the predicted impacts and mitigation measures recommended within the EIA and the implementation and operational activities of a project. As the construction and operation of the Ilanga CSP 5 Facility may impact the environment, activities which pose a threat should be managed and mitigated so that unnecessary or preventable environmental impacts do not result. The primary objective of the EMP is to detail actions required to address the impacts identified in the EIA during the establishment, operation and rehabilitation of the proposed infrastructure. The EMP provides an elaboration of how to implement the mitigation measures documented in the EIA. As such the purpose of the EMP can be outlined as follows:

- To outline mitigation measures and environmental specifications which are required to be implemented for the planning, establishment, rehabilitation and operation/maintenance phases of the project in order to minimise and manage the extent of environmental impacts.
- To ensure that the establishment and operation phases of the coal mining activities do not result in undue or reasonably avoidable adverse environmental impacts, and ensure that any potential environmental benefits are enhanced.
- To identify entities who will be responsible for the implementation of the measures and outline functions and responsibilities.
- To propose mechanisms for monitoring compliance, and preventing long-term or permanent environmental degradation.
- To facilitate appropriate and proactive response to unforeseen events or changes in project implementation that were not considered in the EIA process

In terms of this study, impacts on vegetation and fauna are of primary concern and the construction and operation of the plant may generate impact on vegetation and fauna through a number of different avenues including the following Direct, Indirect and Cumulative Impacts:

Direct impacts:

- Destruction or loss of protected or listed plant species;
- Direct impacts on fauna species including listed fauna;

Indirect Impacts:

- Ecological impacts around the facility due to erosion or alien plant invasion;

Cumulative Impacts:

- Impacts on surrounding habitat/ species due to environmental degradation resulting from erosion and alien plant invasion;

Below are the ecologically-orientated measures that should be implemented as part of the EMP for the development to reduce the significance or extent of the above impacts. The measures below do not exactly match with the impacts that have been identified, as certain mitigation measures, such as limiting the loss of vegetation may be effective at combating several different impacts, such as erosion, faunal impact etc.

6.1 CONSTRUCTION PHASE ACTIVITIES

Objective: Limit disturbance of vegetation and loss of protected flora during construction		
Project component/s	All infrastructure and activities which result in vegetation loss or clearing including: <ul style="list-style-type: none"> » Clearing and excavation for plant establishment; » Construction camps & other temporary infrastructure » Access roads. 	
Potential Impact	Loss of plant cover leading to erosion as well as loss of faunal habitat and loss of specimens of protected plants.	
Activity/risk source	Vegetation clearing for the following <ul style="list-style-type: none"> » Clearing for plant establishment. » Access roads » Laydown areas » Construction Camps 	
Mitigation: Target/Objective	<ul style="list-style-type: none"> » Low footprint and low impact on terrestrial environment. » Low impact on protected plant species 	
Mitigation: Action/control	Responsibility	Timeframe
<ul style="list-style-type: none"> » Preconstruction walk-through of facility footprint and support structure positions and use micro-siting to reduce local impact where possible. » Obtain relevant permits from DAFF and DENC prior to any construction activities at the site. » Affected individuals of protected species which cannot be avoided should be translocated to a safe 	Management/ECO	Construction & Operation

<p>area on the site prior to construction. This does not include trees which cannot be translocated and where these are protected by DAFF and permit for their destruction would be required.</p> <ul style="list-style-type: none"> » Erosion control measures should be implemented in areas where slopes have been disturbed. » Revegetation of cleared areas or monitoring to ensure that recovery is taking place » Alien plant clearing where necessary. 		
Performance Indicator	<ul style="list-style-type: none"> » Vegetation loss restricted to infrastructure footprint. » Low impact on protected plant species. » Permit obtained to destroy or translocate affected individuals of protected species. 	
Monitoring	<p>ECO to monitor construction to ensure that:</p> <ul style="list-style-type: none"> » Vegetation is cleared only within essential areas. » Erosion risk is maintained at an acceptable level through flow regulation structures where appropriate and the maintenance of plant cover wherever possible. 	

Objective: Limit direct and indirect terrestrial faunal impacts during construction

Project component/s	<p>Construction activities especially the following:</p> <ul style="list-style-type: none"> » Vegetation clearing » Human presence » Operation of heavy machinery
Potential Impact	Disturbance of faunal communities due to construction as well as poaching and hunting risk from construction staff.
Activity/risk source	<ul style="list-style-type: none"> » Habitat transformation during construction;

	<ul style="list-style-type: none"> » Presence of construction crews » Operation of heavy vehicles 	
Mitigation: Target/Objective	Low faunal impact during construction.	
Mitigation: Action/control	Responsibility	Timeframe
<ul style="list-style-type: none"> » Environmental induction for all construction staff » ECO to monitor and enforce ban on hunting, collecting etc of all plants and animals or their products. » Any fauna encountered during construction should be removed to safety by the ECO or other suitably qualified person, » All vehicles to adhere to low speed limits (40km/h max) on the site, to reduce risk of faunal collisions as well as reduce dust. » All night-lighting should use low-UV type lights (such as most LEDs), which do not attract insects. The lights should also be of types which are directed downward and do not result in large amounts of light pollution. 	Management/ECO	Construction
Performance Indicator	<ul style="list-style-type: none"> » Low mortality of fauna due to construction machinery and activities » No poaching etc of fauna by construction personnel during construction » Removal to safety of fauna encountered during construction 	
Monitoring	Monitoring for compliance during the construction phase. All incidents to be noted.	

6.2 OPERATION PHASE ACTIVITIES

OBJECTIVE: Limit the ecological footprint of the Facility

Project component/s	Presence and operation of the facility including <ul style="list-style-type: none"> • Movement of maintenance vehicles along the access and service roads • Vegetation management within the site • Faunal management within the facility
Potential Impact	<ul style="list-style-type: none"> » Alien plant invasion » Erosion » Pollution
Activity/risk source	<ul style="list-style-type: none"> » Alien plant invasion in and around the plant » Unregulated runoff from the facility area as well as access roads » Human presence during vegetation clearing or plant maintenance activities » Pollution from maintenance vehicles due to oil or fuel leaks etc » Maintenance activities which may lead to negative impacts such as pollution, herbicide drift etc.
Mitigation: Target/Objective	Low ecological footprint of the facility during operation

Mitigation: Action/control	Responsibility	Timeframe
Vegetation control should be by manual clearing and herbicides should not be used except to control alien plants in the prescribed manner	Management/Contractor	Operation
Annual monitoring for alien plant species - with follow up clearing	Management/Contractor	Operation
Annual site inspection for erosion or water flow regulation problems – with follow up remedial action where problems are identified	Management/Contractor	Operation

Performance Indicator	<ul style="list-style-type: none"> » No erosion problems within the facility or along access roads » Low abundance of alien plants within the site » Maintenance of a ground cover of perennial grasses and forbs that resist erosion.
Monitoring	<ul style="list-style-type: none"> • Annual monitoring with records of alien species presence and clearing actions • Annual monitoring with records of erosion problems and

mitigation actions taken with photographs

7 REFERENCES

- Alexander, G. & Marais, J. 2007. *A Guide to the Reptiles of Southern Africa*. Struik Nature, Cape Town.
- Barnes, K.N. (ed.) 2000. *The Eskom Red Data Book of Birds of South Africa, Lesotho and Swaziland*. BirdLife South Africa, Johannesburg.
- Harrison, J.A., Allan, D.G., Underhill, L.G., Herremans, M., Tree, A.J., Parker, V & Brown, C.J. (eds). 1997. *The atlas of southern African birds*. Vol. 1&2. BirdLife South Africa, Johannesburg.
- Bates, M.F., Branch, W.R., Bauer, A.M., Burger, M., Marais, J., Alexander, G.J. & de Villiers, M. S. 2014. *Atlas and Red List of the Reptiles of South Africa, Lesotho and Swaziland*. Strelitzia 32. SANBI, Pretoria.
- Branch W.R. 1998. *Field guide to snakes and other reptiles of southern Africa*. Struik, Cape Town.
- Du Preez, L. & Carruthers, V. 2009. *A Complete Guide to the Frogs of Southern Africa*. Struik Nature., Cape Town.
- Friedmann, Y. & Daly, B. 2004. *Red data book of the mammals of South Africa, a conservation assessment*. Johannesburg, Endangered Wildlife Trust.
- IUCN 2014. IUCN Red List of Threatened Species. Version 2014.. <www.iucnredlist.org>.
- Marais, J. 2004. *Complete Guide to the Snakes of Southern Africa*. Struik Nature, Cape Town.
- Minter LR, Burger M, Harrison JA, Braack HH, Bishop PJ & Kloepfer D (eds). 2004. *Atlas and Red Data book of the frogs of South Africa, Lesotho and Swaziland*. SI/MAB Series no. 9. Smithsonian Institution, Washington, D.C.
- Nel, J.L., Murray, K.M., Maherry, A.M., Petersen, C.P., Roux, D.J., Driver, A., Hill, L., Van Deventer, H., Funke, N., Swartz, E.R., Smith-Adao, L.B., Mbona, N., Downsborough, L. and Nienaber, S. (2011). *Technical Report for the National Freshwater Ecosystem Priority Areas project*. WRC Report No. K5/1801.
- Mucina L. & Rutherford M.C. (eds) 2006. *The Vegetation of South Africa, Lesotho and Swaziland*. Strelitzia 19. South African National Biodiversity Institute, Pretoria.
- Skinner, J.D. & Chimimba, C.T. 2005. *The mammals of the Southern African Subregion*. Cambridge University Press, Cambridge.

Threatened Ecosystems in South Africa: Descriptions and Maps (available on BGIS website: <http://bgis.sanbi.org>).

ANNEX 1. LIST OF PLANTS

List of plant species which have been recorded in the vicinity of the Karoshoek Solar Valley project site, based on the SANBI SIBIS database.

Family	Species	Family	Species
ACANTHACEAE	<i>Acanthopsis hoffmannseggiana</i>	ACANTHACEAE	<i>Barleria lichtensteiniana</i>
ACANTHACEAE	<i>Barleria rigida</i>	ACANTHACEAE	<i>Blepharis mitrata</i>
ACANTHACEAE	<i>Monechma desertorum</i>	ACANTHACEAE	<i>Monechma divaricatum</i>
ACANTHACEAE	<i>Monechma incanum</i>	ACANTHACEAE	<i>Monechma spartioides</i>
ACANTHACEAE	<i>Peristrophe cernua</i>	AIZOACEAE	<i>Aizoon asbestinum</i>
AIZOACEAE	<i>Aizoon schellenbergii</i>	AIZOACEAE	<i>Galenia africana</i>
AIZOACEAE	<i>Plinthus karooicus</i>	AIZOACEAE	<i>Trianthena parvifolia</i> var. <i>parvifolia</i>
AMARANTHACEAE	<i>Amaranthus praetermissus</i>	AMARANTHACEAE	<i>Amaranthus thunbergii</i>
AMARANTHACEAE	<i>Leucosphaera bainesii</i>	AMARANTHACEAE	<i>Sericocoma avolans</i>
APOCYNACEAE	<i>Adenium oleifolium</i>	APOCYNACEAE	<i>Brachystelma huttonii</i>
APOCYNACEAE	<i>Ceropegia</i> sp.	APOCYNACEAE	<i>Gomphocarpus tomentosus</i> subsp. <i>tomentosus</i>
APOCYNACEAE	<i>Huernia hystrix</i> subsp. <i>hystrix</i>	APOCYNACEAE	<i>Orbea variegata</i>
APOCYNACEAE	<i>Sarcostemma pearsonii</i>	ASPARAGACEAE	<i>Asparagus lignosus</i>
ASPHODELACEAE	<i>Aloe claviflora</i>	ASPHODELACEAE	<i>Aloe dichotoma</i>
ASTERACEAE	<i>Berkheya annectens</i>	ASTERACEAE	<i>Brachylaena ilicifolia</i>
ASTERACEAE	<i>Cineraria geraniifolia</i>	ASTERACEAE	<i>Cineraria saxifraga</i>
ASTERACEAE	<i>Cotula sericea</i>	ASTERACEAE	<i>Dicoma capensis</i>
ASTERACEAE	<i>Dimorphotheca cuneata</i>	ASTERACEAE	<i>Dimorphotheca sinuata</i>
ASTERACEAE	<i>Dimorphotheca zeyheri</i>	ASTERACEAE	<i>Eriocephalus microphyllus</i> var. <i>pubescens</i>
ASTERACEAE	<i>Euryops brachypodus</i>	ASTERACEAE	<i>Felicia echinata</i>
ASTERACEAE	<i>Felicia filifolia</i> subsp. <i>filifolia</i>	ASTERACEAE	<i>Felicia hyssopifolia</i> subsp. <i>hyssopifolia</i>
ASTERACEAE	<i>Felicia muricata</i> subsp. <i>cinerascens</i>	ASTERACEAE	<i>Felicia muricata</i> subsp. <i>muricata</i>
ASTERACEAE	<i>Felicia ovata</i>	ASTERACEAE	<i>Gazania leiopoda</i>
ASTERACEAE	<i>Geigeria ornativa</i>	ASTERACEAE	<i>Geigeria pectidea</i>
ASTERACEAE	<i>Gnaphalium capense</i>	ASTERACEAE	<i>Gnaphalium vestitum</i>
ASTERACEAE	<i>Gymnostephium ciliare</i>	ASTERACEAE	<i>Helichrysum</i> sp.
ASTERACEAE	<i>Ifloga</i> sp.	ASTERACEAE	<i>Kleinia longiflora</i>
ASTERACEAE	<i>Leysera tenella</i>	ASTERACEAE	<i>Matricaria</i> sp.
ASTERACEAE	<i>Metalasia pulcherrima</i> forma <i>pulcherrima</i>	ASTERACEAE	<i>Nidorella auriculata</i>
ASTERACEAE	<i>Nidorella</i> sp.	ASTERACEAE	<i>Osteospermum grandidentatum</i>
ASTERACEAE	<i>Osteospermum imbricatum</i>	ASTERACEAE	<i>Osteospermum junceum</i>

Family	Species	Family	Species
ASTERACEAE	<i>Othonna eriocarpa</i>	ASTERACEAE	<i>Pegolettia retrofracta</i>
ASTERACEAE	<i>Pentzia dentata</i>	ASTERACEAE	<i>Pentzia incana</i>
ASTERACEAE	<i>Pentzia pinnatisecta</i>	ASTERACEAE	<i>Pentzia spinescens</i>
ASTERACEAE	<i>Pteronia sordida</i>	ASTERACEAE	<i>Pteronia teretifolia</i>
ASTERACEAE	<i>Pteronia unguiculata</i>	ASTERACEAE	<i>Schistostephium crataegifolium</i>
ASTERACEAE	<i>Senecio asperulus</i>	ASTERACEAE	<i>Senecio erubescens</i> var. <i>erubescens</i>
ASTERACEAE	<i>Senecio hastatus</i>	ASTERACEAE	<i>Senecio juniperinus</i> var. <i>juniperinus</i>
ASTERACEAE	<i>Senecio macroglossus</i>	ASTERACEAE	<i>Senecio monticola</i>
ASTERACEAE	<i>Senecio othonniflorus</i>	ASTERACEAE	<i>Senecio puberulus</i>
ASTERACEAE	<i>Senecio retrorsus</i>	ASTERACEAE	<i>Senecio</i> sp.
ASTERACEAE	<i>Tarchonanthus camphoratus</i>	ASTERACEAE	<i>Tarchonanthus littoralis</i>
AYTONIACEAE	<i>Plagiochasma rupestre</i> var. <i>rupestre</i>	BIGNONIACEAE	<i>Rhigozum obovatum</i>
BIGNONIACEAE	<i>Rhigozum trichotomum</i>	BORAGINACEAE	<i>Ehretia rigida</i> subsp. <i>rigida</i>
BORAGINACEAE	<i>Heliotropium ciliatum</i>	BORAGINACEAE	<i>Lappula heteracantha</i>
BUDDLEJACEAE	<i>Buddleja saligna</i>	CAMPANULACEAE	<i>Wahlenbergia capillacea</i> subsp. <i>capillacea</i>
CAMPANULACEAE	<i>Wahlenbergia tenella</i> var. <i>tenella</i>	CAPPARACEAE	<i>Boscia foetida</i> subsp. <i>foetida</i>
CAPPARACEAE	<i>Cadaba aphylla</i>	CHENOPODIACEAE	<i>Salsola glabrescens</i>
CHENOPODIACEAE	<i>Salsola namibica</i>	CHENOPODIACEAE	<i>Salsola rabieana</i>
COLCHICACEAE	<i>Ornithoglossum viride</i>	CRASSULACEAE	<i>Cotyledon orbiculata</i> var. <i>orbiculata</i>
CRASSULACEAE	<i>Cotyledon woodii</i>	CUCURBITACEAE	<i>Coccinia rehmannii</i>
DIPSACACEAE	<i>Scabiosa angustiloba</i>	EBENACEAE	<i>Euclea undulata</i>
ERIOSPERMACEAE	<i>Eriospermum flagelliforme</i>	EUPHORBIACEAE	<i>Euphorbia avasmontana</i> var. <i>sagittaria</i>
EUPHORBIACEAE	<i>Euphorbia gariepina</i> subsp. <i>balsamea</i>	EUPHORBIACEAE	<i>Euphorbia glanduligera</i>
EUPHORBIACEAE	<i>Euphorbia inaequilatera</i> var. <i>inaequilatera</i>	EUPHORBIACEAE	<i>Euphorbia mauritanica</i> var. <i>mauritanica</i>
EUPHORBIACEAE	<i>Euphorbia rudis</i>	EUPHORBIACEAE	<i>Euphorbia spinea</i>
FABACEAE	<i>Acacia karroo</i>	FABACEAE	<i>Acacia mellifera</i> subsp. <i>detinens</i>
FABACEAE	<i>Amphithalea williamsonii</i>	FABACEAE	<i>Argyrolobium harveyanum</i>
FABACEAE	<i>Aspalathus subtingens</i>	FABACEAE	<i>Aspalathus tridentata</i> subsp. <i>staurantha</i>
FABACEAE	<i>Dipogon lignosus</i>	FABACEAE	<i>Indigostrum argyraeum</i>
FABACEAE	<i>Indigofera alternans</i> var. <i>alternans</i>	FABACEAE	<i>Indigofera angustata</i>
FABACEAE	<i>Indigofera auricoma</i>	FABACEAE	<i>Indigofera heterotricha</i>
FABACEAE	<i>Indigofera holubii</i>	FABACEAE	<i>Indigofera zeyheri</i>
FABACEAE	<i>Parkinsonia africana</i>	FABACEAE	<i>Pomaria lactea</i>
FABACEAE	<i>Prosopis glandulosa</i> var. <i>glandulosa</i>	FABACEAE	<i>Prosopis velutina</i>
FABACEAE	<i>Ptycholobium biflorum</i> subsp. <i>biflorum</i>	FABACEAE	<i>Tephrosia angulata</i>
FABACEAE	<i>Tephrosia capensis</i> var. <i>capensis</i>	FABACEAE	<i>Tephrosia dregeana</i> var. <i>dregeana</i>
FABACEAE	<i>Tephrosia grandiflora</i>	GERANIACEAE	<i>Monsonia burkeana</i>
GERANIACEAE	<i>Monsonia umbellata</i>	GERANIACEAE	<i>Pelargonium anethifolium</i>

Family	Species	Family	Species
GERANIACEAE	<i>Pelargonium inquinans</i>	GERANIACEAE	<i>Pelargonium reniforme</i> subsp. <i>reniforme</i>
GESNERIACEAE	<i>Streptocarpus</i> sp.	GISEKIACEAE	<i>Gisekia pharnacioides</i> var. <i>pharnacioides</i>
HYACINTHACEAE	<i>Albuca setosa</i>	HYACINTHACEAE	<i>Dipcadi ciliare</i>
HYACINTHACEAE	<i>Dipcadi viride</i>	HYACINTHACEAE	<i>Ledebouria undulata</i>
HYACINTHACEAE	<i>Ornithogalum tenuifolium</i> subsp. <i>tenuifolium</i>	IRIDACEAE	<i>Dierama pulcherrimum</i>
IRIDACEAE	<i>Tritonia strictifolia</i>	LOPHIOCARPACEAE	<i>Lophiocarpus polystachyus</i>
LORANTHACEAE	<i>Tapinanthus oleifolius</i>	MALPIGHIACEAE	<i>Triaspis hypericoides</i> subsp. <i>nelsonii</i>
MALVACEAE	<i>Hermannia abrotanoides</i>	MALVACEAE	<i>Hermannia flammea</i>
MALVACEAE	<i>Hermannia gracilis</i>	MALVACEAE	<i>Hermannia modesta</i>
MALVACEAE	<i>Hermannia mucronulata</i>	MALVACEAE	<i>Hermannia salviifolia</i> var. <i>grandistipula</i>
MALVACEAE	<i>Hermannia</i> sp.	MALVACEAE	<i>Hermannia spinosa</i>
MELIACEAE	<i>Nymania capensis</i>	MENISPERMACEAE	<i>Cissampelos capensis</i>
MESEMBRYANTHEMACEAE	<i>Lithops bromfieldii</i>	MESEMBRYANTHEMACEAE	<i>Psilocaulon coriarium</i>
MESEMBRYANTHEMACEAE	<i>Psilocaulon granulicaule</i>	MESEMBRYANTHEMACEAE	<i>Ruschia vulvaria</i>
MOLLUGINACEAE	<i>Limeum aethiopicum</i> subsp. <i>aethiopicum</i> var. <i>aethiopicum</i>	MOLLUGINACEAE	<i>Limeum myosotis</i> var. <i>confusum</i>
MOLLUGINACEAE	<i>Mollugo cerviana</i> var. <i>cerviana</i>	NEURADACEAE	<i>Grielum humifusum</i> var. <i>humifusum</i>
NYCTAGINACEAE	<i>Phaeoptilum spinosum</i>	OCHNACEAE	<i>Ochna arborea</i> var. <i>arborea</i>
OLEACEAE	<i>Olea capensis</i> subsp. <i>capensis</i>	ORCHIDACEAE	<i>Holothrix burchellii</i>
OROBANCHACEAE	<i>Hyobanche sanguinea</i>	OXALIDACEAE	<i>Oxalis bowiei</i>
OXALIDACEAE	<i>Oxalis imbricata</i> var. <i>violacea</i>	PASSIFLORACEAE	<i>Adenium repanda</i>
PEDALIACEAE	<i>Sesamum capense</i>	PHYLLANTHACEAE	<i>Phyllanthus incurvus</i>
PHYLLANTHACEAE	<i>Phyllanthus maderaspatensis</i>	PLANTAGINACEAE	<i>Plantago</i> sp.
POACEAE	<i>Anthephora pubescens</i>	POACEAE	<i>Aristida adscensionis</i>
POACEAE	<i>Aristida congesta</i> subsp. <i>barbicollis</i>	POACEAE	<i>Cenchrus ciliaris</i>
POACEAE	<i>Enneapogon desvauxii</i>	POACEAE	<i>Enneapogon scaber</i>
POACEAE	<i>Eragrostis annulata</i>	POACEAE	<i>Eragrostis biflora</i>
POACEAE	<i>Eragrostis echinochloidea</i>	POACEAE	<i>Eragrostis porosa</i>
POACEAE	<i>Eragrostis rotifer</i>	POACEAE	<i>Eragrostis</i> sp.
POACEAE	<i>Fingerhuthia africana</i>	POACEAE	<i>Panicum lanipes</i>
POACEAE	<i>Schmidtia kalahariensis</i>	POACEAE	<i>Setaria verticillata</i>
POACEAE	<i>Sporobolus nervosus</i>	POACEAE	<i>Stipagrostis anomala</i>
POACEAE	<i>Stipagrostis ciliata</i> var. <i>capensis</i>	POACEAE	<i>Stipagrostis obtusa</i>
POACEAE	<i>Stipagrostis uniplumis</i> var. <i>neesii</i>	POACEAE	<i>Stipagrostis uniplumis</i> var. <i>uniplumis</i>
POACEAE	<i>Tragus berteronianus</i>	POLYGALACEAE	<i>Polygala seminuda</i>
POLYGONACEAE	<i>Persicaria attenuata</i> subsp. <i>africana</i>	PORTULACACEAE	<i>Portulaca quadrifida</i>
PORTULACACEAE	<i>Talinum arnotii</i>	ROSACEAE	<i>Cliffortia linearifolia</i>
ROSACEAE	<i>Cliffortia serpyllifolia</i>	RUBIACEAE	<i>Kohautia caespitosa</i> subsp. <i>brachyloba</i>
RUBIACEAE	<i>Kohautia cynanchica</i>	RUBIACEAE	<i>Nenax microphylla</i>

Family	Species	Family	Species
RUBIACEAE	<i>Pavetta capensis subsp. capensis</i>	SANTALACEAE	<i>Thesium gnidiaceum var. gnidiaceum</i>
SCROPHULARIACEAE	<i>Aptosimum albomarginatum</i>	SCROPHULARIACEAE	<i>Aptosimum lineare var. lineare</i>
SCROPHULARIACEAE	<i>Aptosimum marlothii</i>	SCROPHULARIACEAE	<i>Aptosimum procumbens</i>
SCROPHULARIACEAE	<i>Aptosimum spinescens</i>	SCROPHULARIACEAE	<i>Jamesbrittenia atropurpurea subsp. pubescens</i>
SOLANACEAE	<i>Lycium oxycarpum</i>	SOLANACEAE	<i>Solanum capense</i>
SOLANACEAE	<i>Solanum nigrum</i>	THYMELAEACEAE	<i>Gnidia burchellii</i>
THYMELAEACEAE	<i>Gnidia nana</i>	THYMELAEACEAE	<i>Gnidia sp.</i>
THYMELAEACEAE	<i>Struthiola argentea</i>	VERBENACEAE	<i>Chascanum cuneifolium</i>
VERBENACEAE	<i>Chascanum incisum</i>	ZYGOPHYLLACEAE	<i>Tribulus terrestris</i>
ZYGOPHYLLACEAE	<i>Tribulus zeyheri subsp. zeyheri</i>	ZYGOPHYLLACEAE	<i>Zygophyllum dregeanum</i>
ZYGOPHYLLACEAE	<i>Zygophyllum flexuosum</i>	ZYGOPHYLLACEAE	<i>Zygophyllum lichtensteinianum</i>
ZYGOPHYLLACEAE	<i>Zygophyllum rigidum</i>		

ANNEX 2. LIST OF MAMMALS

List of mammals which are likely to occur in the vicinity of the Karoshoek Solar Valley. Habitat notes and distribution records are based on Skinner & Chimimba (2005), while conservation status is from the IUCN Red Lists 2012. Listed species are highlighted.

Scientific Name	Common Name	Status	Habitat	Likelihood
Macroscledidea (Elephant Shrews):				
<i>Macroscelides proboscideus</i>	Round-eared Elephant Shrew	LC	Species of open country, with preference for shrub bush and sparse grass cover, also occur on hard gravel plains with sparse boulders for shelter, and on loose sandy soil provided there is some bush cover	High
<i>Elephantulus rупestris</i>	Western Rock Elephant Shrew	LC	Rocky koppies, rocky outcrops or piles of boulders where these offer sufficient holes and crannies for refuge.	Low
Tubulentata:				
<i>Orycteropus afer</i>	Aardvark	LC	Wide habitat tolerance, being found in open woodland, scrub and grassland, especially associated with sandy soil	Definite
Hyracoidea (Hyaxes)				
<i>Procavia capensis</i>	Rock Hyrax	LC	Outcrops of rocks, especially granite formations and dolomite intrusions in the Karoo. Also erosion gullies	Definite
Lagomorpha (Hares and Rabbits):				
<i>Lepus capensis</i>	Cape Hare	LC	Dry, open regions, with palatable bush and grass	Definite
<i>Lepus saxatilis</i>	Scrub Hare	LC	Common in agriculturally developed areas, especially in crop-growing areas or in fallow lands where there is some bush development.	High
Rodentia (Rodents):				
<i>Hystrix africaeaustralis</i>	Cape Porcupine	LC	Catholic in habitat requirements.	Definite
<i>Pedetes capensis</i>	Springhare	LC	Occur widely on open sandy ground or sandy scrub, on overgrazed grassland, on the fringes of vleis and dry river beds.	High
<i>Xerus inauris</i>	South African Ground Squirrel	LC	Open terrain with a sparse bush cover and a hard substrate	Definite
<i>Graphiurus ocularis</i>	Spectacled Dormouse	LC	Associated with sandstones of Cape Fold mountains, which have many vertical and horizontal crevices.	Low
<i>Rhabdomys pumilio</i>	Four-striped Grass Mouse	LC	Essentially a grassland species, occurs in wide variety of habitats where there is good grass cover.	High
<i>Mastomys coucha</i>	Southern Multimammate Mouse	LC	Wide habitat tolerance.	High
<i>Thallomys pædulcus</i>	Acacia Tree Rat	LC	Associated with stands of Acacia woodland	Low
<i>Thallomys nigricauda</i>	Black-tailed Tree Rat	LC	Associated with stands of Acacia woodland	Low
<i>Aethomys namaquensis</i>	Namaqua Rock Mouse	LC	Catholic in their habitat requirements, but where there are rocky koppies, outcrops or boulder-strewn hillsides they use these preferentially	Definite

Fauna & Flora Specialist Report

Scientific Name	Common Name	Status	Habitat	Likelihood
<i>Parotomys brantsii</i>	Brants' Whistling Rat	LC	Associated with a dry sandy substrate in more arid parts of the Nama-karoo and Succulent Karoo. Species selects areas of low percentage of plant cover and areas with deep sands.	High
<i>Parotomys littledalei</i>	Littledale's Whistling Rat	LC	Riverine associations or associated with Lycium bushes or Psilocaulon absimile	Low
<i>Desmodillus auricularis</i>	Cape Short-tailed Gerbil	LC	Tend to occur on hard ground, unlike other gerbil species, with some cover of grass or karroid bush	High
<i>Gerbillurus paebea</i>	Hairy-footed Gerbil	LC	Gerbils associated with Nama and Succulent Karoo preferring sandy soil or sandy alluvium with a grass, scrub or light woodland cover	High
<i>Gerbilliscus leucogaster</i>	Bushveld Gerbil	LC	Predominantly associated with light sandy soils or sandy alluvium	Low
<i>Gerbilliscus brantsii</i>	Higheld Gerbil	LC	Sandy soils or sandy alluvium with some cover of grass, scrub or open woodland	High
<i>Saccostomus campestris</i>	Pouched Mouse	LC	Catholic habitat requirements, commoner in areas where there is a sandy substrate.	High
<i>Malacothrix typica</i>	Gerbil Mouse	LC	Found predominantly in Nama and Succulent Karoo biomes, in areas with a mean annual rainfall of 150-500 mm.	High
Primates:				
<i>Papio ursinus</i>	Chacma Baboon	LC	Can exploit fynbos, montane grasslands, riverine courses in deserts, and simply need water and access to refuges.	Definite
<i>Cercopithecus mitis</i>	Vervet Monkey	LC	Most abundant in and near riparian vegetation of savannahs	Definite
Eulipotyphla (Shrews):				
<i>Crociodura cyanea</i>	Reddish-Grey Musk Shrew	LC	Occurs in relatively dry terrain, with a mean annual rainfall of less than 500 mm. Occur in karroid scrub and in fynbos often in association with rocks.	Low
Erinaceomorpha (Hedgehog)				
<i>Atelerix frontalis</i>	South African Hedgehog	LC	Generally found in semi-arid and subtemperate environments with ample ground cover	Moderate
Carnivora:				
<i>Proteles cristata</i>	Aardwolf	LC	Common in the 100-600mm rainfall range of country, Nama-Karoo, Succulent Karoo Grassland and Savanna biomes	Definite
<i>Hyaena brunnea</i>	Brown Hyaena	NT	Nama and Succulent Karoo and the drier parts of the Grassland and Savanna Biomes	Low
<i>Caracal caracal</i>	Caracal	LC	Caracals tolerate arid regions, occur in semi-desert and karroid conditions	High
<i>Felis silvestris</i>	African Wild Cat	LC	Wide habitat tolerance.	High
<i>Felis nigripes</i>	Black-footed cat	VU	Associated with arid country with MAR 100-500 mm, particularly areas with open habitat that provides some cover in the form of tall stands of grass or scrub.	High
<i>Genetta genetta</i>	Small-spotted genet	LC	Occur in open arid associations	High

Scientific Name	Common Name	Status	Habitat	Likelihood
<i>Suricata suricatta</i>	Meerkat	LC	Open arid country where substrate is hard and stony. Occur in Nama and Succulent Karoo but also fynbos	High
<i>Cynictis penicillata</i>	Yellow Mongoose	LC	Semi-arid country on a sandy substrate	Definite
<i>Galerella sanguinea</i>	Slender Mongoose	LC	Catholic habitat requirements but does not occur in the south.	Low
<i>Herpestes pulverulentus</i>	Cape Grey Mongoose	LC	Wide habitat tolerance	High
<i>Atilax paludinosus</i>	Marsh Mongoose	LC	Associated with well-watered terrain, living in close association with rivers, streams, marshes, etc.	Low
<i>Vulpes chama</i>	Cape Fox	LC	Associated with open country, open grassland, grassland with scattered thickets and coastal or semi-desert scrub	High
<i>Canis mesomelas</i>	Black-backed Jackal	LC	Wide habitat tolerance, more common in drier areas.	High
<i>Otocyon megalotis</i>	Bat-eared Fox	LC	Open country with mean annual rainfall of 100-600 mm	High
<i>Aonyx capensis</i>	African Clawless Otter	LC	Predominantly aquatic and do not occur far from permanent water	Low
<i>Ictonyx striatus</i>	Striped Polecat	LC	Widely distributed throughout the sub-region	High
<i>Mellivora capensis</i>	Ratel/Honey Badger	IUCN LC/SA RDB EN	Catholic habitat requirements	High
Rumanantia (Antelope):				
<i>Sylvicapra grimmia</i>	Common Duiker	LC	Presence of bushes is essential	High
<i>Raphicerus campestris</i>	Steenbok	LC	Inhabits open country,	Definite
Chiroptera (Bats)				
<i>Pipistrellus capensis</i>	Cape Serotine Bat	LC	Wide habitat tolerances, but often found near open water	High
<i>Tadarida aegyptiaca</i>	Egyptian Free-tailed Bat	LC	In arid areas. often associated with water sources	High
<i>Nycteris thebaica</i>	Egyptian Slit-faced Bat	LC	Wide habitat tolerance	High
<i>Rhinolophus denti</i>	Dent's Horseshoe Bat	LC	Arid areas but require caves or rock crevices	High
<i>Rhinolophus darlingi</i>	Darling's Horseshoe Bat	LC	Savanna woodland species but requires caves	Low
<i>Eidolon helvum</i>	Straw-coloured fruit bat	LC	Occasional migratory visitors within southern Africa	Low

ANNEX 3. LIST OF REPTILES

List of reptiles which are likely to occur at vicinity of the Karoshoek Solar Valley. Habitat notes and distribution records are based on Branch (1988) and Alexander and Marais (2007), while conservation status is from the IUCN Red Lists 2012.

Scientific Name	Common Name	Distribution		Habitat	Likelihood
Tortoises and Terrapins:					
<i>Psammobates oculiferus</i>	Kalahari Tent Tortoise	Endemic	Data Deficient	Karoo and Kalahari shrublands	High
Snakes:					
<i>Rhinotyphlops lalandei</i>	Delalande's Beaked Blind Snake	Endemic	Data Deficient	Varied: semi-desert, coastal bush, fynbos & savannah	Low
<i>Lamprophis capensis</i>	Brown House Snake	Widespread	Data Deficient	Common in highveld grassland & arid karroid regions, but found everywhere & tolerant of urban sprawl	High
<i>Lycophidion capense</i>	Common Wolf Snake	Widespread	Data Deficient	Lowland forest and fynbos to moist savanna, grassland and karoo scrub	High
<i>Pseudaspis cana</i>	Mole Snake	Widespread	Data Deficient	Sandy scrubland in SW Cape, highveld grassland & mountainous & desert regions	High
<i>Dipsina multimaculata</i>	Dwarf Beaked Snake	Endemic	Data Deficient	Rocky, sandy areas. Cape karroid areas.	High
<i>Psammophis notostictus</i>	Karoo Sand or Whip Snake	Widespread	Data Deficient	Arid scrubland & karroid regions	High
<i>Psammophis trinasalis</i>	Kalahari Sand Snake	Widespread	Data Deficient	Mainly Kalahari thornveld but may also occur in savanna and grassland	High
<i>Dasypeltis scabra</i>	Common/Rhombic Egg Eater	Widespread	LC	Absent only from true desert & closed-canopy forest	High
<i>Naja nivea</i>	Cape Cobra	Widespread	Data Deficient	Arid karroid regions, particularly along river courses, entering well drained open areas along the southern coast	High
<i>Bitis arietans</i>	Puff Adder	Widespread	Data Deficient	Absent only from desert & mnt tops	High
<i>Bitis caudalis</i>	Horned Adder	Widespread	Data Deficient	Sandy regions, throughout Karoo	High
Worm Lizards					
<i>Monopeltis infuscata</i>	Dusky Spade-snouted Worm Lizard	Widespread	Data Deficient	Dry and moist savannah	High
Lizard and Skinks:					
<i>Mabuya capensis</i>	Cape Skink	Widespread	Data Deficient	Very varied: arid karroid veld, moist coastal bush, montane grassland, etc	High
<i>Mabuya occidentalis</i>	Western Three-Striped Skink	Widespread	Data Deficient	Arid Savanna karroid veld and desert	High
<i>Mabuya spilogaster</i>	Kalahari Tree Skink	Widespread		Arid Savannah	High
<i>Mabuya sulcata</i>	Western Rock Skink	Widespread	Data Deficient	Karroid areas	High

Fauna & Flora Specialist Report

Scientific Name	Common Name	Distribution		Habitat	Likelihood
<i>Mabuya striata</i>	Striped Skink	Widespread	Data Deficient	Varied, except desert areas, succulent karoo and fynbos	High
<i>Mabuya variegata</i>	Variegated Skink	Widespread	Data Deficient	Extremely varied; desert, karroid veld, montane grassland, savanna, coastal bush & valley bushveld	High
<i>Heliobolus lugubris</i>	Bushveld Lizard	Widespread	Data Deficient	Arid and mesic savannah	High
<i>Meroles suborbitalis</i>	Spotted Desert Lizard	Endemic	Data Deficient	Varied, arid savanna to desert	High
<i>Pedioplanis lineocellata</i>	Spotted Sand Lizard	Endemic	Data Deficient	Very varied: karroid veld, valley bushveld & arid & mesic savannah	High
<i>Pedioplanis namaquensis</i>	Namaqua Sand Lizard	Widespread	Data Deficient	Karroid veld	High
<i>Gerrhosaurus flavigularis</i>	Yellow-throated Plated Lizard	Widespread	Data Deficient	Montane grassland, savanna, bushveld and low open coastal forest	Low
<i>Cordylus polyzonus</i>	Karoo Girdled Lizard	Endemic	Data Deficient	Karroid regions, coastal renosterveld and succulent karoo	High
<i>Varanus albigularis</i>	Rock Monitor	Widespread	Data Deficient	Savanna and arid karroid areas	High
<i>Varanus niloticus</i>	Water Monitor	Widespread	Data Deficient	Rivers pans and major lakes	High
<i>Agama aculeata</i>	Ground Agama	Widespread	Data Deficient	Semi desert and savanna	High
<i>Agama anchietae</i>	Anchieta's Agama	Widespread	Data Deficient	Semi desert and arid savanna	High
Geckos:					
<i>Chondrodactylus angulifer</i>	Giant Ground Gecko	Endemic	LC	Gravel plains, interdune spaces & sandy flats	High
<i>Chondrodactylus bibronii</i>	Bibron's Tubercled Gecko	Endemic	Data Deficient	Rocky outcrops, cliffs and large trees	High
<i>Pachydactylus capensis</i>	Cape Thick-toed Gecko	Widespread	Data Deficient	Karroid veld, grassland and mesic savannah	High
<i>Pachydactylus mariquensis</i>	Marico Thick-toed Gecko	Endemic	Data Deficient	Flat sandy plains with sparse vegetation	High
<i>Ptenopus garrulus</i>	Common Barking Gecko	Endemic	Data Deficient	Desert and semi-desert on various soil types, preferring flat stable sandy soils with sparse vegetation cover	High

ANNEX 4. LIST OF AMPHIBIANS

List of amphibians which are likely to occur in the vicinity of the Karoshoek Solar Valley. Habitat notes and distribution records are based on Du Preez and Carruthers (2009), while conservation status is from the IUCN Red Lists 2012.

Scientific Name	Common Name	Status	Habitat	Distribution	Likelihood
<i>Amietophrynus gutturalis</i>	Guttural Toad	Not Threatened	Around open pools, dams, vleis and other semi-permanent or permanent water	Widespread	Low
<i>Amietophrynus poweri</i>	Western Olive Toad	Not Threatened	Around vleis and pans in thornveld savanna	Widespread	Low
<i>Amietophrynus rangeri</i>	Raucous Toad	Not Threatened	Rivers and stream in grassland and fynbos	Endemic	Low
<i>Vandijkophrynus gariiepensis</i>	Karoo Toad	Not Threatened	Karoo Scrub	Widespread	High
<i>Pyxicephalus adspersus</i>	Giant Bullfrog	Near Threatened	Breed in shallow margins of rain-filled depressions.	Widespread	Low
<i>Xenopus laevis</i>	Common Platanna	Not Threatened	Any more or less permanent water	Widespread	High
<i>Cacosternum boettgeri</i>	Common Caco	Not Threatened	Marshy areas, vleis and shallow pans	Widespread	High
<i>Amietia angolensis</i>	Common River Frog	Not Threatened	Banks of slow-flowing streams or permanent bodies of water	Widespread	High
<i>Tomopterna cryptotis</i>	Tremelo Sand Frog	Not Threatened	Savanna and grassland	Widespread	High
<i>Tomopterna tandyi</i>	Tandy's Sand Frog	Not Threatened	Nama karoo grassland and savanna	Widespread	High