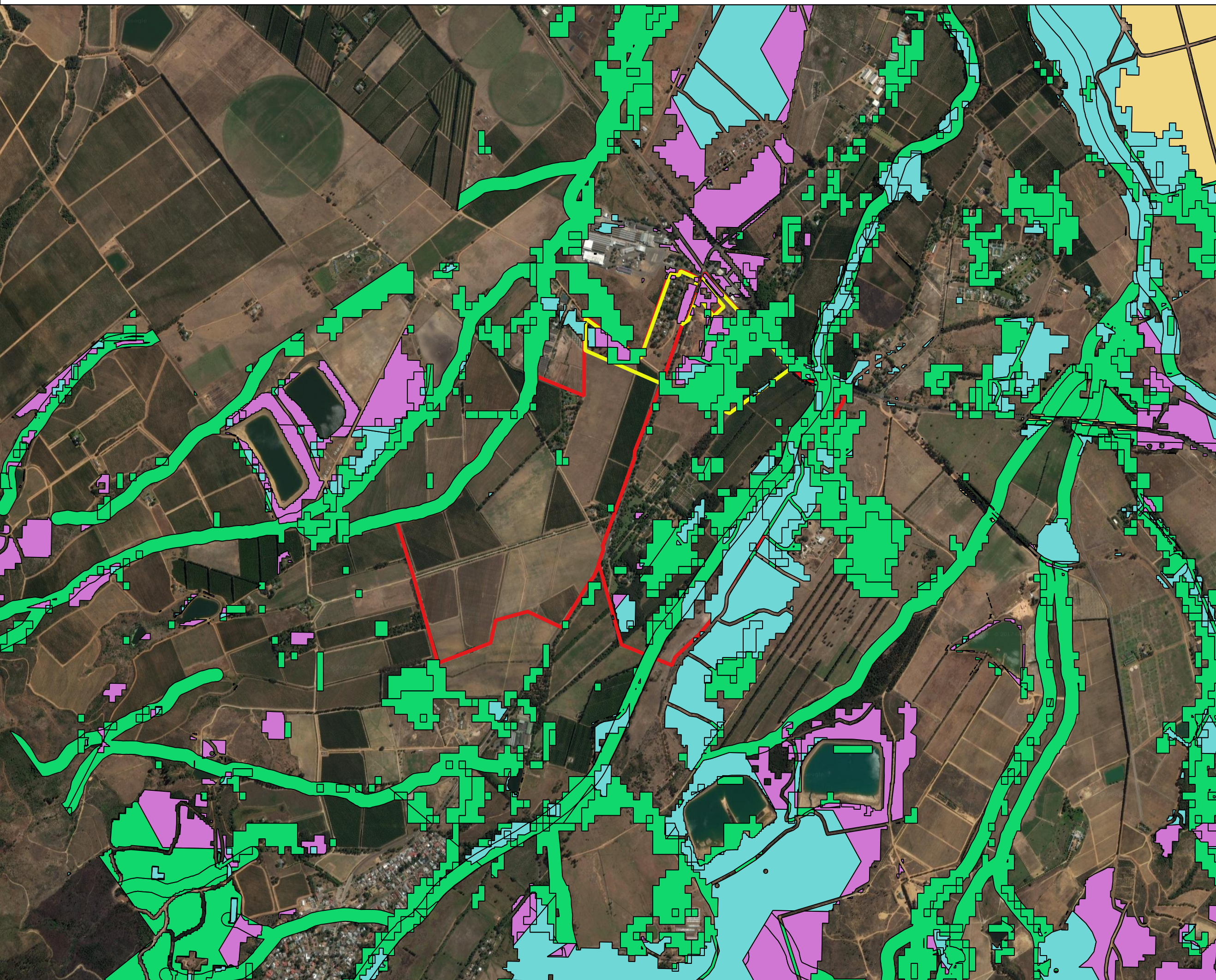







PROPOSED MIXED USE DEVELOPMENT ON PORTION 7 AND 10 OF FARM 1674, BOSCHENDAL (BOSCHENDAL VILLAGE)

**SANBI BGIS:
STELLENBOSCH**



Legend

-  Proposed Development Area
-  Property Boundaries
-  Protected Area
-  Other Natural Area
-  Ecological Support Area 2: Restore
-  Ecological Support Area
-  Critical Biodiversity Area 2: Degraded
-  Critical Biodiversity Area

Site Coordinates:
33°52'26.62"S
18°58'24.33"E

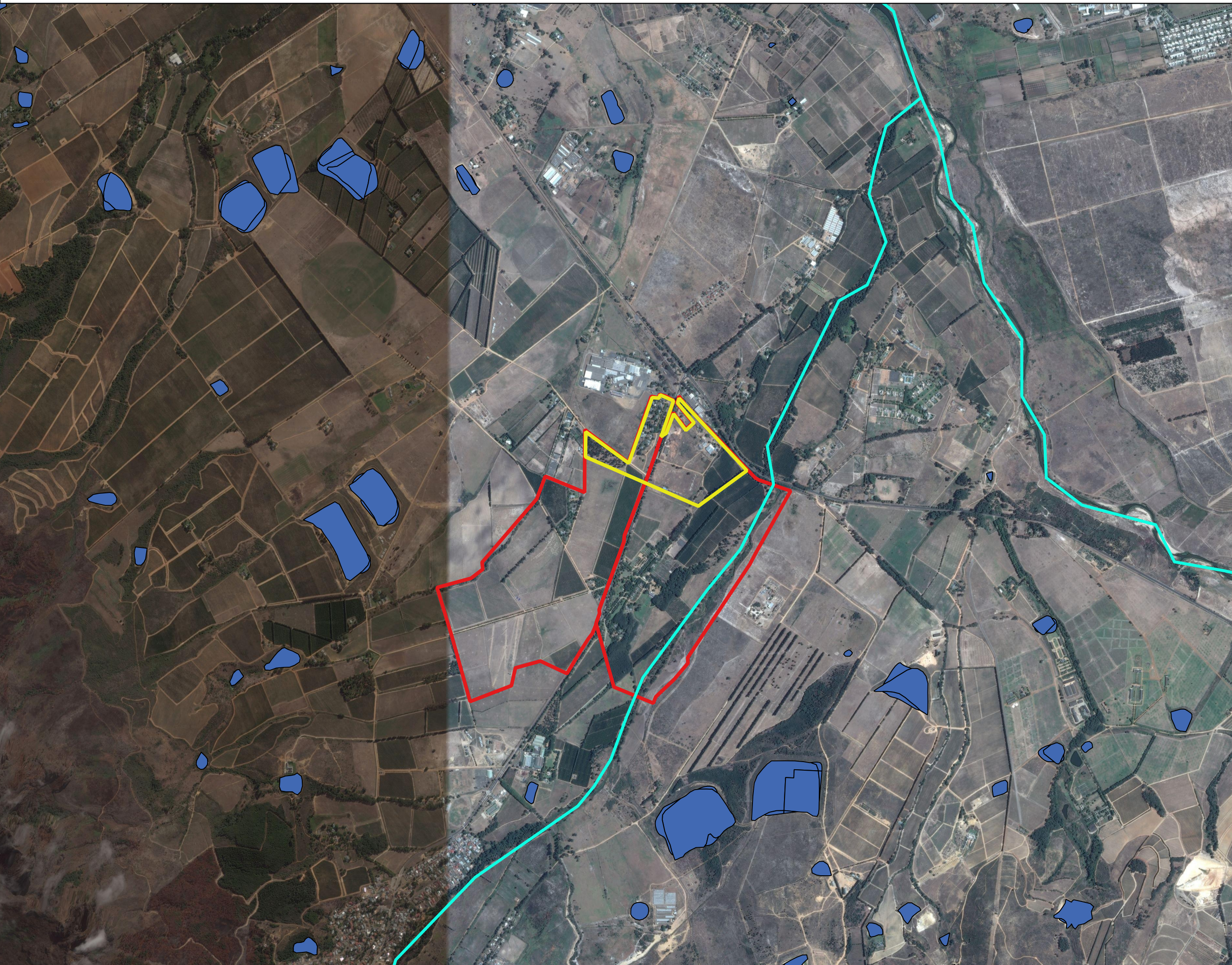
Datum: WGS84
Projection: Geographic

Scale: 1:20 000 (on A3)



PROPOSED MIXED USE DEVELOPMENT ON PORTION 7 AND 10 OF FARM 1674, BOSCHENDAL (BOSCHENDAL VILLAGE)

SANBI BGIS: NFEPA WETLANDS & RIVERS



Legend

-  NFEPA Wetlands
-  NFEPA Rivers
-  Development Area
-  Property Boundaries

Site Coordinates

33° 52' 26.62" S
18° 58' 24.33" E

Datum: WGS84
Projection: Geographic
Scale: 1:25000



Date: August 2016

DJEC Ref. 2004/31

Prepared by:




PROPOSED MIXED USE DEVELOPMENT ON PORTION 7 AND 10 OF FARM 1674, BOSCHENDAL (BOSCHENDAL VILLAGE)


2012 Vegetation Map of South Africa, Lesotho and Swaziland

Legend

 Development Area

 Property Boundaries

Vegetation & NEM:BA Status

 Boland Granite Fynbos - VU

 Swartland Alluvium Fynbos - CR

Site Coordinates

33° 52' 26.62" S
18° 58' 24.33" E

Datum: WGS84
Projection: Geographic
Scale: 1:25000



Date: August 2016

DJEC Ref. 2004/31

Prepared by:

 DOUG JEFFERY
Environmental Consultants (Pty) Ltd.