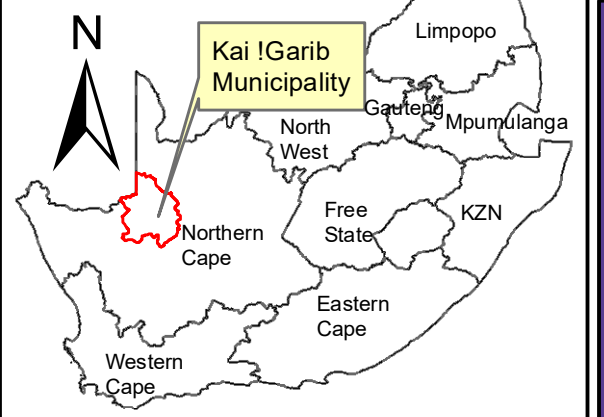
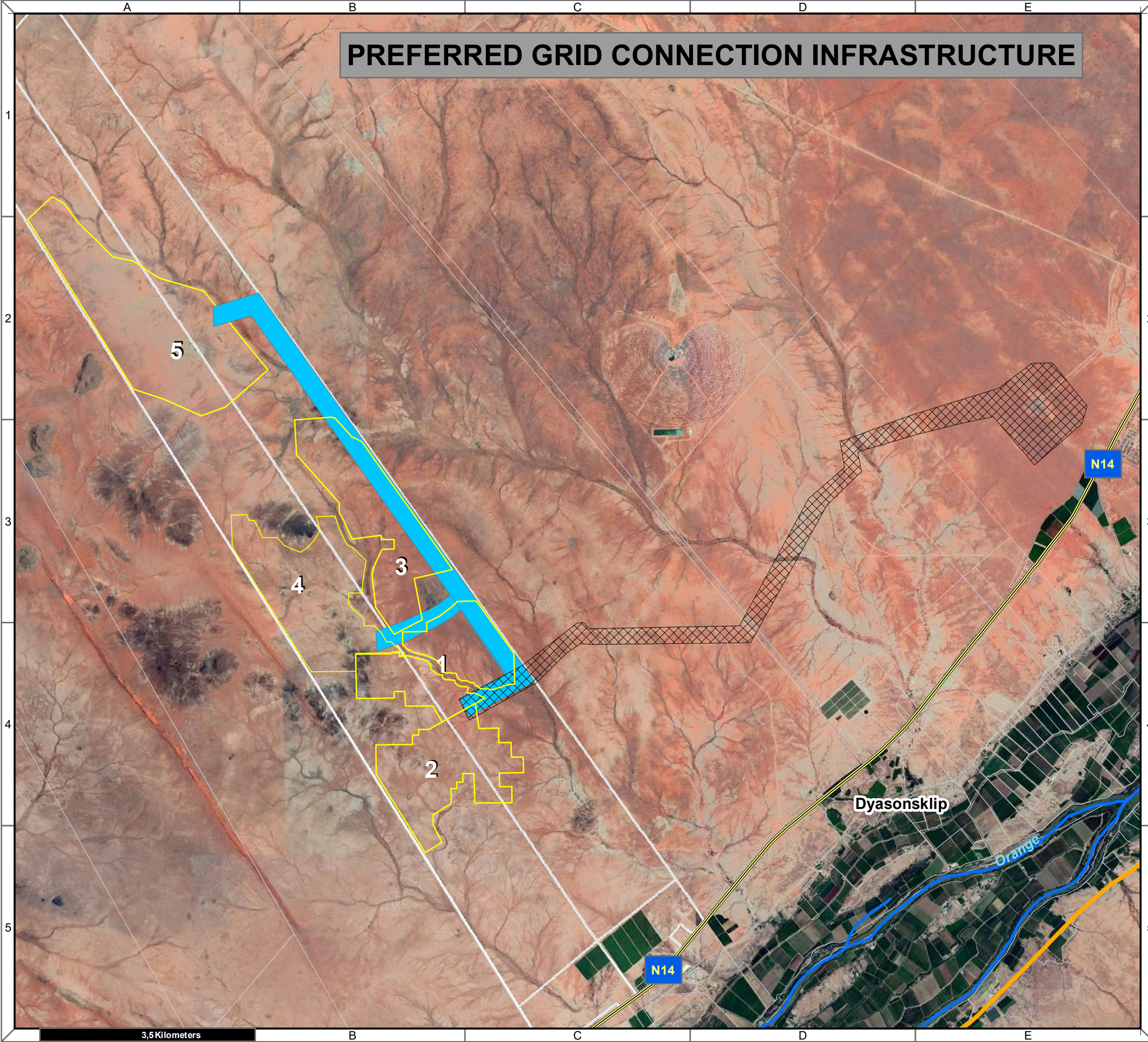


PREFERRED GRID CONNECTION INFRASTRUCTURE



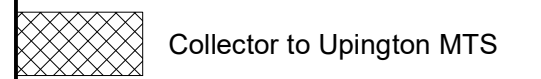
Bloemsmond Grid Connection Infrastructure

Legend

Bloemsmond Solar Projects

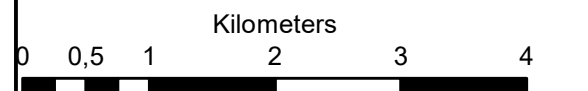


Grid Connection Corridors



Notes

- Map Scale is 1: 60 000 when printed on A3
- Aerial image courtesy of Google Earth Pro 2019
- Imagery date December 2018

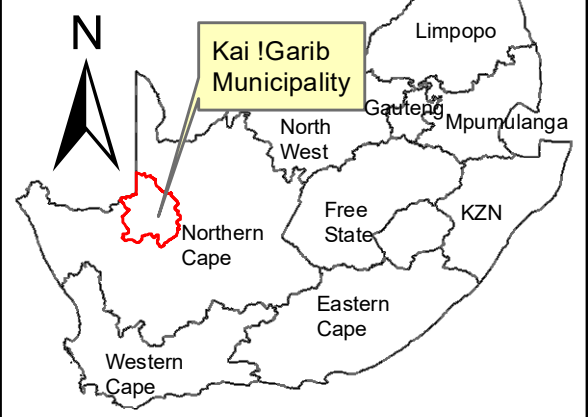
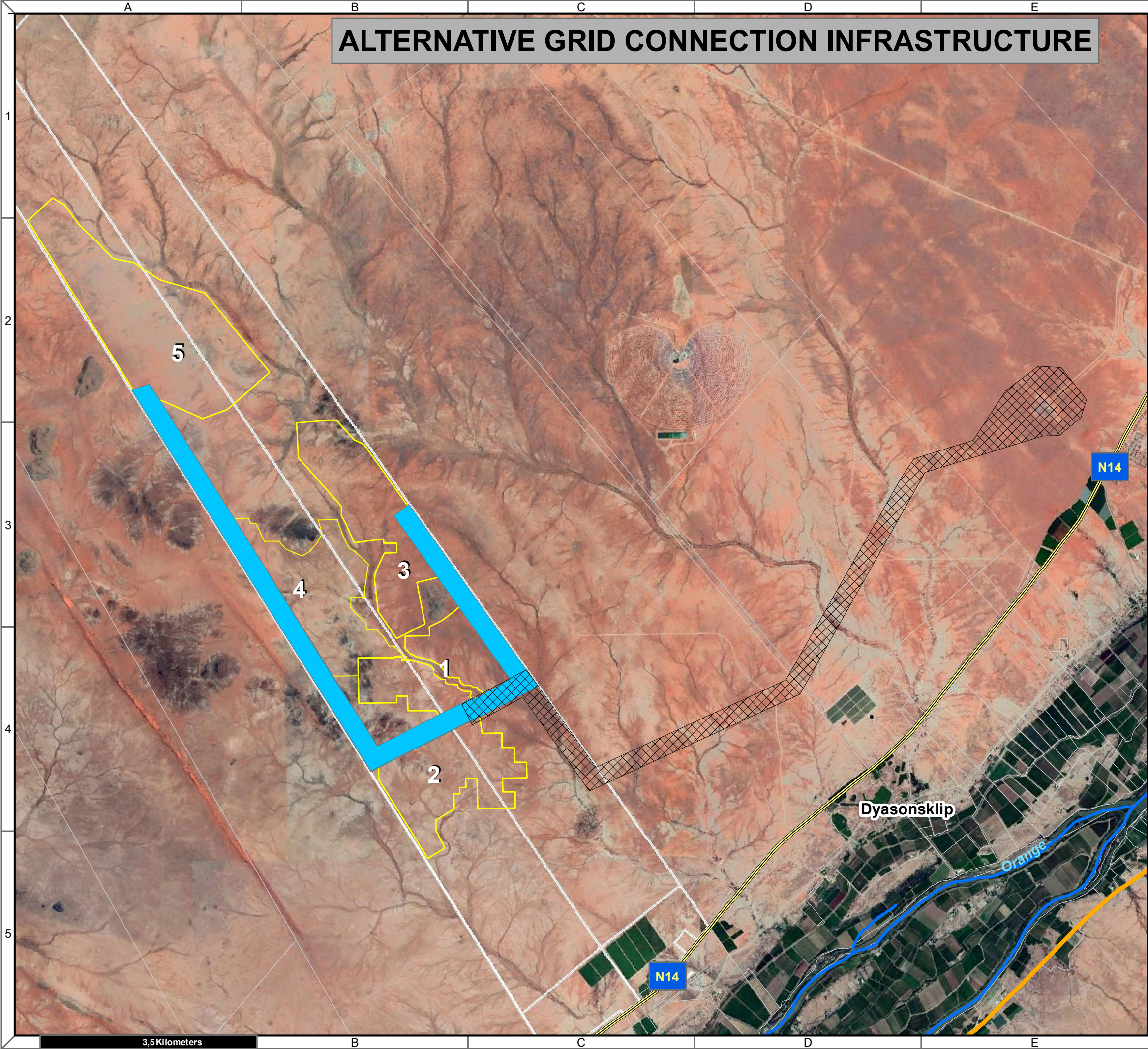


| Map Drawn By: | Date | Reference |
|----------------|------------|-----------|
| Melissa Mackay | 2019/10/10 | KAI582 |


Cape Environmental Assessment Practitioners (Pty) Ltd
 Reg. No. 2008/042707
 Telephone: +27 44 874 0365
 Facsimile: +27 44 874 0432
 Web: www.cape-eaprac.co.za
 17 Progress St
 PO Box 2070
 George 6530

SITE LOCATION PLAN

ALTERNATIVE GRID CONNECTION INFRASTRUCTURE

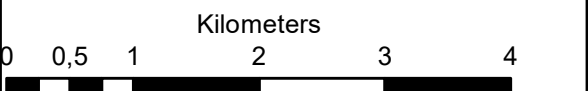


Bloemsmond Grid Connection Infrastructure Legend

- Polygons**
- Grid Connection Corridors**
- On-site to Collector
 - Collector to Upington MTS
- Bloemsmond Solar Projects**
-
- Other Features**
- ARTERIAL ROUTE
 - MAIN ROAD
 - NATIONAL ROUTE
 - Perennial River

Notes

- Map Scale is 1: 60 000 when printed on A3
- Aerial image courtesy of Google Earth Pro 2019
- Imagery date December 2018



| Map Drawn By: | Date | Reference |
|----------------|------------|-----------|
| Melissa Mackay | 2019/10/10 | KAI582 |

Cape Environmental Assessment Practitioners (Pty) Ltd
 Reg. No. 2008/042707

Telephone: +27 44 874 0365
 Facsimile: +27 44 874 0432
 Web: www.cape-eaprac.co.za

17 Progress St
 PO Box 2070
 George 6530

SITE LOCATION PLAN

3,5 Kilometers