

APPENDIX D
PHOTOGRAPHS

18 August 2022



Main Entrance, D73



Parking at Triple A Beef reception (Ptn 8 Shallow Drift)



Feedlot pens (Ptn 8 Shallow Drift)



Abattoir (Ptn 28 Shallow Drift)



Abattoir with refrigerated delivery fleet, foggage/silage and hay sheds



Rookerynook Dam, offchannel storage (Ptn 46 Wagenbeetjes Draai)



Ptn 7 Shallow Drift hay lands, north of D73



Feedlot staff housing along D73, asbestos roofing scheduled for removal October 2022



Pasture and hay production & storage south of D73, note centre pivot



Quarantine herd on Wondervale (Ptn 20 Wagenbeetjes Draai)



Rookerynook hay lands (Ptn 46 Wagenbeetjes Draai)



Yellow billed kites along Umngeni River



Hay lands along R614, cleared bush encroachment (Ptn 1 Linchester)



Foggage, hay sheds, feedlot (Ptn 25 Shallow Drift)



Golden Lay Dam, foggage & hay sheds, abattoir and refrigerated fleet (Ptns 25 and 28 Shallow Drift)



Grey crested cranes (Ptn 11 Shallow Drift)

Google Earth Imagery, Triple A Beef Landholding



December 1985



August 2006



September 2010



December 2014



April 2017



August 2022



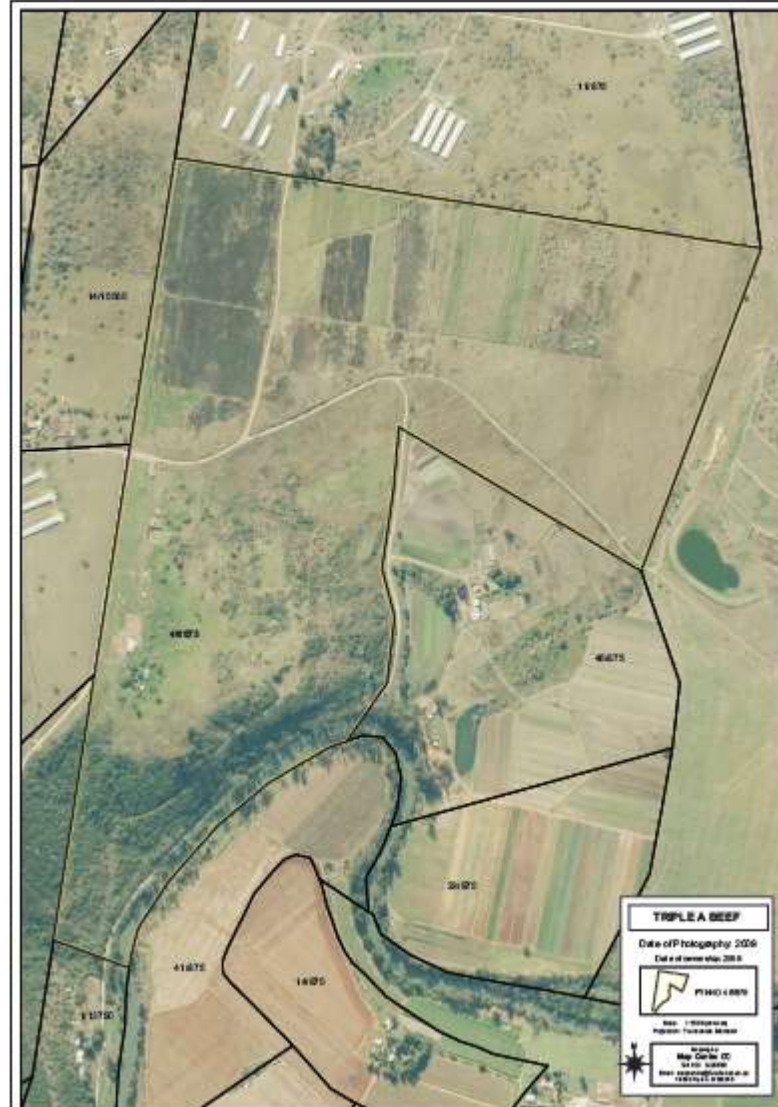
Ptn 1 Binchester Grange, 1995



Ptn 25 Shallow Drift, 2003



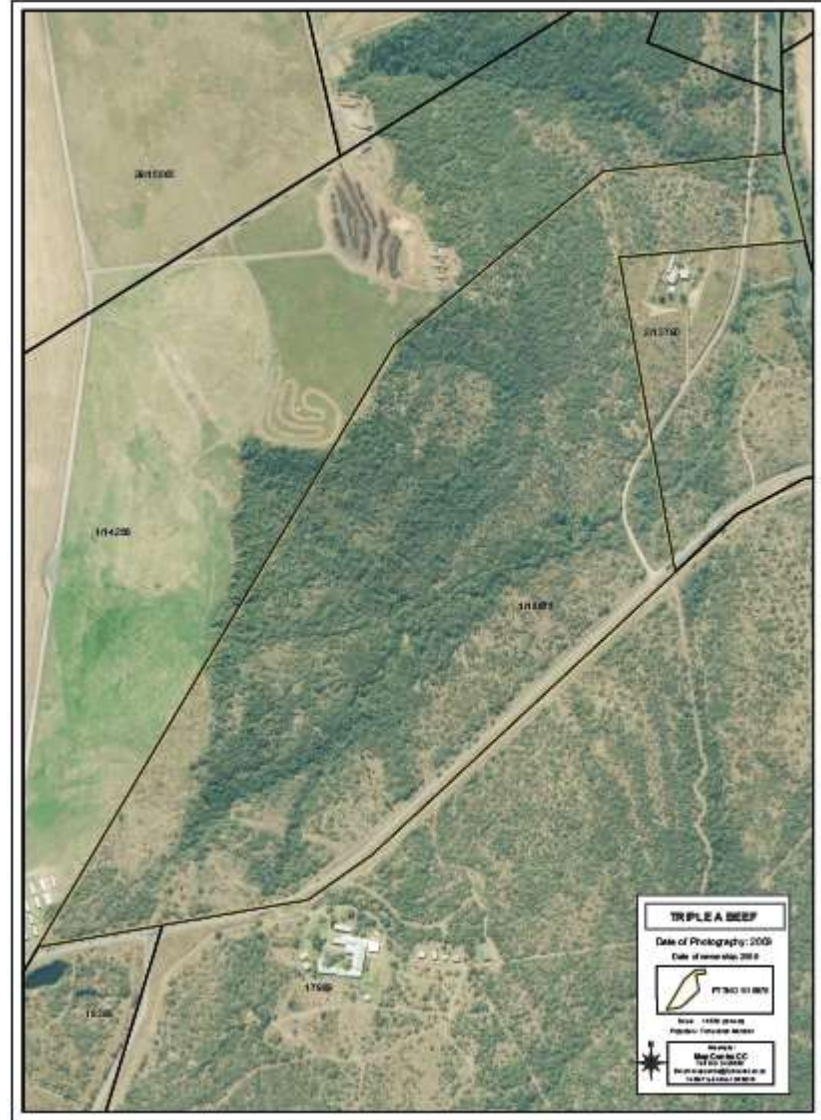
Ptn 20 Wagenbeetjes Draai, 2003



Ptn 46 Wagenbeetjes Draai, 2009



Ptn 7 Shallow Drift, 2009



Ptn 1 Linchester, 2009



Ptn 9 Shallow Drift, 2013



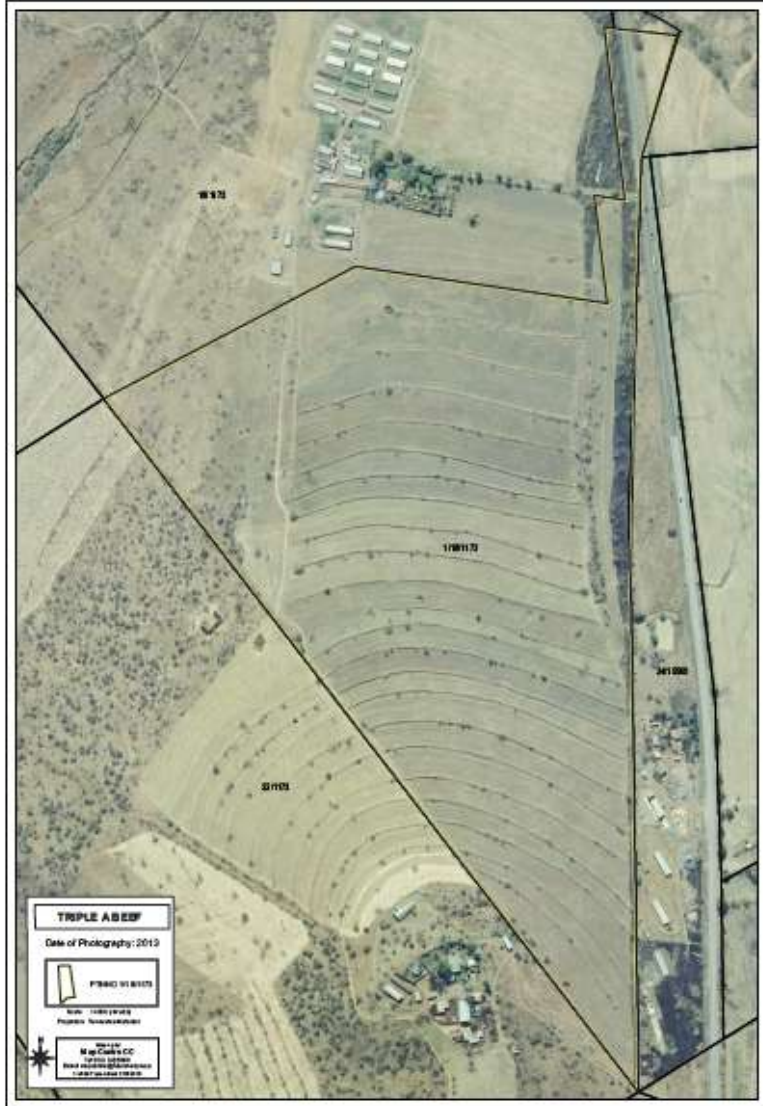
Ptn 10 Shallow Drift, 2013



Ptn 11 Shallow Drift, 2013



Ptn 12 Shallow Drift, 2013



Ptn 51 Zeekoegat (also known as Ptn 1 (of 18) Zeekoegat, 2013