

Heritage Impact Assessment Report

Noenieput Illustrative Material

SAHRA Case #:



Pro-Active Archaeological Consultants

www.paac.co.za

Dr Liezl van Pletzen-Vos
083 2785 125
liezl@paac.co.za

PostNet Suite 168
Private Bag X15
Somerset West
7129

Dr Reneé Rust
021 844 0949
renee@paac.co.za

Figures

Figure 1: Location of finds.....	4
Figure 2: Mark 407.....	5
Figure 3: Mark 406.....	5
Figure 4: Mark 408.....	5
Figure 5: Mark 409.....	5
Figure 6: Mark 411.....	6
Figure 7: Mark 412.....	6
Figure 8: Mark 413.....	6
Figure 9: Mark 414.....	6
Figure 10: Mark 415.....	7
Figure 11: Mark 416.....	7
Figure 12: Mark 417.....	7
Figure 13: Mark 418.....	7
Figure 14: Mark 419.....	8
Figure 15: Mark 420.....	8
Figure 16: Mark 421.....	8
Figure 17: Mark 422.....	8
Figure 18: Mark 423.....	9
Figure 19: Mark 424.....	9
Figure 20: Mark 425.....	9
Figure 21: Mark 426.....	9
Figure 22: Mark 427.....	10
Figure 23: Mark 428.....	10
Figure 24: Mark 429.....	10
Figure 25: Mark 430.....	10
Figure 26: Mark 431.....	11
Figure 27: Mark 432.....	11
Figure 28: Mark 433.....	11
Figure 29: Mark 434.....	11
Figure 30: Mark 435.....	12
Figure 31: Mark 436.....	12
Figure 32: Mark 437.....	12
Figure 33: Mark 438.....	12
Figure 34: Mark 439.....	13
Figure 35: Mark 440.....	13
Figure 36: Mark 441.....	13
Figure 37: IMG_3529.png.....	13
Figure 38: IMG_3531.png.....	14
Figure 39: IMG_3536.png.....	14
Figure 40: IMG_3544.png.....	14
Figure 41: IMG_3552.png.....	14
Figure 42: IMG_3555.png.....	15
Figure 43: IMG_3564.png.....	15
Figure 44: Mark 098.....	15
Figure 45: Mark 099.....	15

Figure 46: Mark 100.....	16
Figure 47: Mark 101.....	16
Figure 48: Mark 102.....	16
Figure 49: Mark 103.....	16
Figure 50: Mark 104.....	17
Figure 51: Mark 106.....	17
Figure 52: Mark 107.....	17
Figure 53: Mark 108.....	17
Figure 54: Mark 109.....	18
Figure 55: Mark 110.....	18
Figure 56: Mark 111.....	18
Figure 57: Mark 112.....	18
Figure 58: Mark 113.....	19
Figure 59: Mark 114.....	19
Figure 60: Mark 115.....	19
Figure 61: Mark 118.....	19
Figure 62: Mark 121.....	20
Figure 63: Mark 121b.....	20
Figure 64: Mark 122.....	20
Figure 65: Mark 123.....	20
Figure 66: Mark 124.....	21
Figure 67: Mark 125.....	21
Figure 68: Mark 126.....	21
Figure 69: Mark 127.....	21
Figure 70: Mark 128.....	22
Figure 71: Mark 129.....	22
Figure 72: Mark 130.....	22
Figure 73: Mark 131.....	22

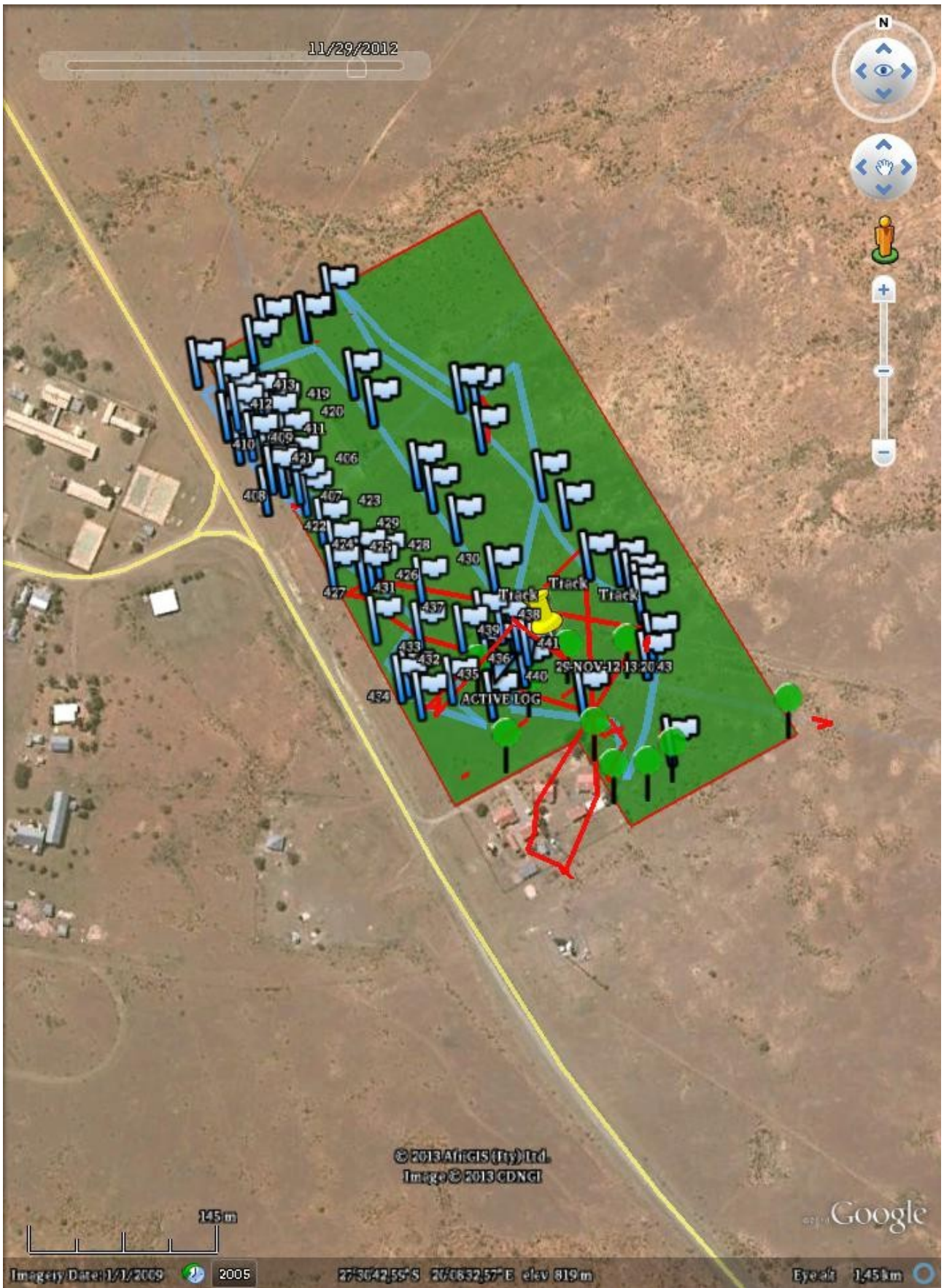


Figure 1: Location of finds



Figure 2: Mark 407



Figure 3: Mark 406



Figure 4: Mark 408



Figure 5: Mark 409



Figure 6: Mark 411



Figure 7: Mark 412



Figure 8: Mark 413



Figure 9: Mark 414



Figure 10: Mark 415



Figure 11: Mark 416



Figure 12: Mark 417



Figure 13: Mark 418



Figure 14: Mark 419



Figure 15: Mark 420



Figure 16: Mark 421



Figure 17: Mark 422



Figure 18: Mark 423



Figure 19: Mark 424



Figure 20: Mark 425



Figure 21: Mark 426



Figure 22: Mark 427



Figure 23: Mark 428



Figure 24: Mark 429



Figure 25: Mark 430



Figure 26: Mark 431



Figure 27: Mark 432



Figure 28: Mark 433



Figure 29: Mark 434



Figure 30: Mark 435



Figure 31: Mark 436



Figure 32: Mark 437



Figure 33: Mark 438



Figure 34: Mark 439



Figure 35: Mark 440



Figure 36: Mark 441



Figure 37: IMG_3529.png



Figure 38: IMG_3531.png



Figure 39: IMG_3536.png



Figure 40: IMG_3544.png



Figure 41: IMG_3552.png



Figure 42: IMG_3555.png



Figure 43: IMG_3564.png



Figure 44: Mark 098



Figure 45: Mark 099



Figure 46: Mark 100



Figure 47: Mark 101



Figure 48: Mark 102



Figure 49: Mark 103



Figure 50: Mark 104



Figure 51: Mark 106



Figure 52: Mark 107



Figure 53: Mark 108



Figure 54: Mark 109



Figure 55: Mark 110



Figure 56: Mark 111



Figure 57: Mark 112



Figure 58: Mark 113



Figure 59: Mark 114



Figure 60: Mark 115



Figure 61: Mark 118



Figure 62: Mark 121

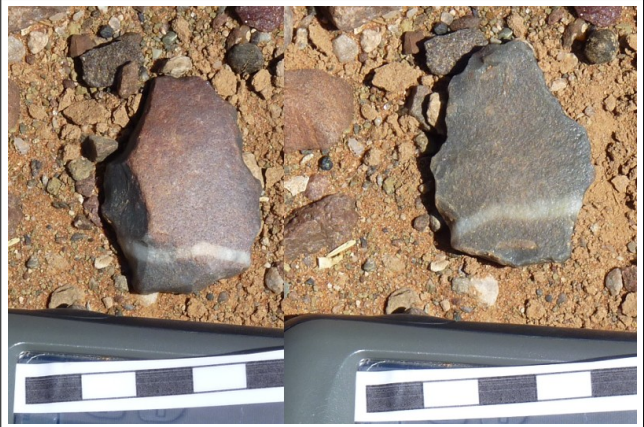


Figure 63: Mark 121b



Figure 64: Mark 122



Figure 65: Mark 123



Figure 66: Mark 124



Figure 67: Mark 125



Figure 68: Mark 126



Figure 69: Mark 127



Figure 70: Mark 128



Figure 71: Mark 129



Figure 72: Mark 130



Figure 73: Mark 131