

NOTICE OF APPLICATION FOR ENVIRONMENTAL AUTHORISATION

THABAZIMBI IRON ORE MINE
PROJECT PHOENIX
 ENVIRONMENTAL IMPACT ASSESSMENT PROCESS
 SCOPING PHASE
BACKGROUND INFORMATION DOCUMENT
AUGUST-SEPTEMBER 2012

1. BACKGROUND AND LEGAL REQUIREMENTS

Notice is hereby given that an application for environmental authorization in terms of the EIA Regulations of 2010 (Regulations in terms of Chapter 5 of the National Environmental Management Act of 1998, as amended) has been lodged with the Limpopo Department of Economic Development, Environment and Tourism (LEDET) under Ref. Number: 12/1/9/2-W26. The activity requires an application subject to a Scoping and Environmental Impact Assessment Process as required by Sections 26 to 35 of Government Notice R. 543 of the EIA Regulations of December 2010.

The above processes will partly be informed by:

(1) *Environmental Impact Assessments to be conducted;*

the results of which will be used to

(2) *Amend the mine's Environmental Management Programme, closure plan, rehabilitation plan and financial provision.*

2. LOCATION OF MINING ACTIVITIES

The mine is situated in the Waterberg District Municipality of the Limpopo Province, some 220km north-west of Pretoria and approximately 140km south of Lephalale (Ellisras).

3. DESCRIPTION OF PROPOSED EXPANSION (PROJECT PHOENIX)

The LOM of the Thabazimbi mine is reaching its end in 2016. Kumba is investigating possibilities to extend the LOM by at least 20 years by exploiting the large low grade iron ore resources in the form of banded ironstone formations (BIF). The current operational plant at Thabazimbi is not equipped to treat the banded ironstone earmarked for the Phoenix Plant.

Project Phoenix includes the following activities: Underground exploration, two open pit areas (current Vanderbijl pit and Sovereign Hill), additional waste rock dumps & plant discard dump(s), bulk sampling (total of ±750 000t – overburden and ore included), maintenance workshop, fuel storage, pilot plants, access and haul roads, power lines, new slimes dam, slimes and return water pipelines, return water dam (review of WUL), possible construction of bridge over national road to link the eastern and western side, new load-out station, new siding, product beds and storm water management system. All of the above mentioned activities will take place within the existing mining license area.

Activities applied for:

R545, 18 June 2010	5	Construction of pipelines consisting of two slimes and one return water pipelines with diameter of 150mm (each) and length of ±6 kilometers for the purpose of delivering slimes from the new plant to the slimes dam and return water from the slimes dam.
		Construction of slimes dam number 5 (Phoenix slimes dam)
R544, 18	9	Construction of ±6

June 2010		kilometers, two 150mm diameter (each) slimes pipelines delivering slimes from the new plant to the slimes dam and one 150mm diameter return water pipeline with a combined throughput of more than 120ℓ per second.
R545, 18 June 2010	5	Conveyors crossing the Rooikuispruit transporting ore from the plant load out station approximately 1 kilometer and crossing Rooikuispruit from the crusher to the plant approximately 4 kilometers in length.
R545, 18 June 2010	5	Levelling of the Rooikuispruit bed to improve the water flow, and lining of the Rooikuispruit to prevent seepage from the spruit into Van der Bijl pit.
R544, 18 June 2010	18	
R544, 18 June 2010	10	Construction of 132Kv power line crossing over the Rooikuispruit. The route, length and servitude width will be a subject of alternative assessment.
R545, 18 June 2010	5	Bridge crossing over the R510 Thabazimbi northern road to provide access from Van der Bijl pit to Donkerpoort.
R544, 18 June 2010	11	
R544,	53	Construction of an

June 2010		additional railway siding to accommodate the new ore beds.
R544, 18 June 2010	47	6, 5 km of haul roads within the mining area with a width of 23 meters. Haul roads will cross storm water drainage lines and will require a Water Use License section 21 c & i.
R545, 18 June 2010	5	Various existing and future infrastructure e.g. haul roads, waste rock dumps and slimes dam facilities that alter storm water drainage lines originating in the Kwaggashoek, Van der Bijl, Bobbejaanwater, Donkerpoort, Buffelshoek and Meyer mine areas that require a water use license.

4. SCOPE OF EIA

The Environmental Impact Assessment (EIA) process will be conducted in two phases i.e. a Scoping phase and an update of the current approved EMP. The first phase consists of required public consultation activities, which are undertaken to inform Interested & Affected Parties (I&AP's) of the proposed activities and record their (I&AP's) issues, comments and/or concerns. Key dates for the Scoping Phase Public Consultation process are given below (section 5).

The EIA scope of study includes:

- New activities as described under section 3;
- All areas of study identified by specialist studies; and
- All public consultation activities to be conducted for the environmental impact assessment.

5. KEY DATES FOR SCOPING PHASE PUBLIC CONSULTATION

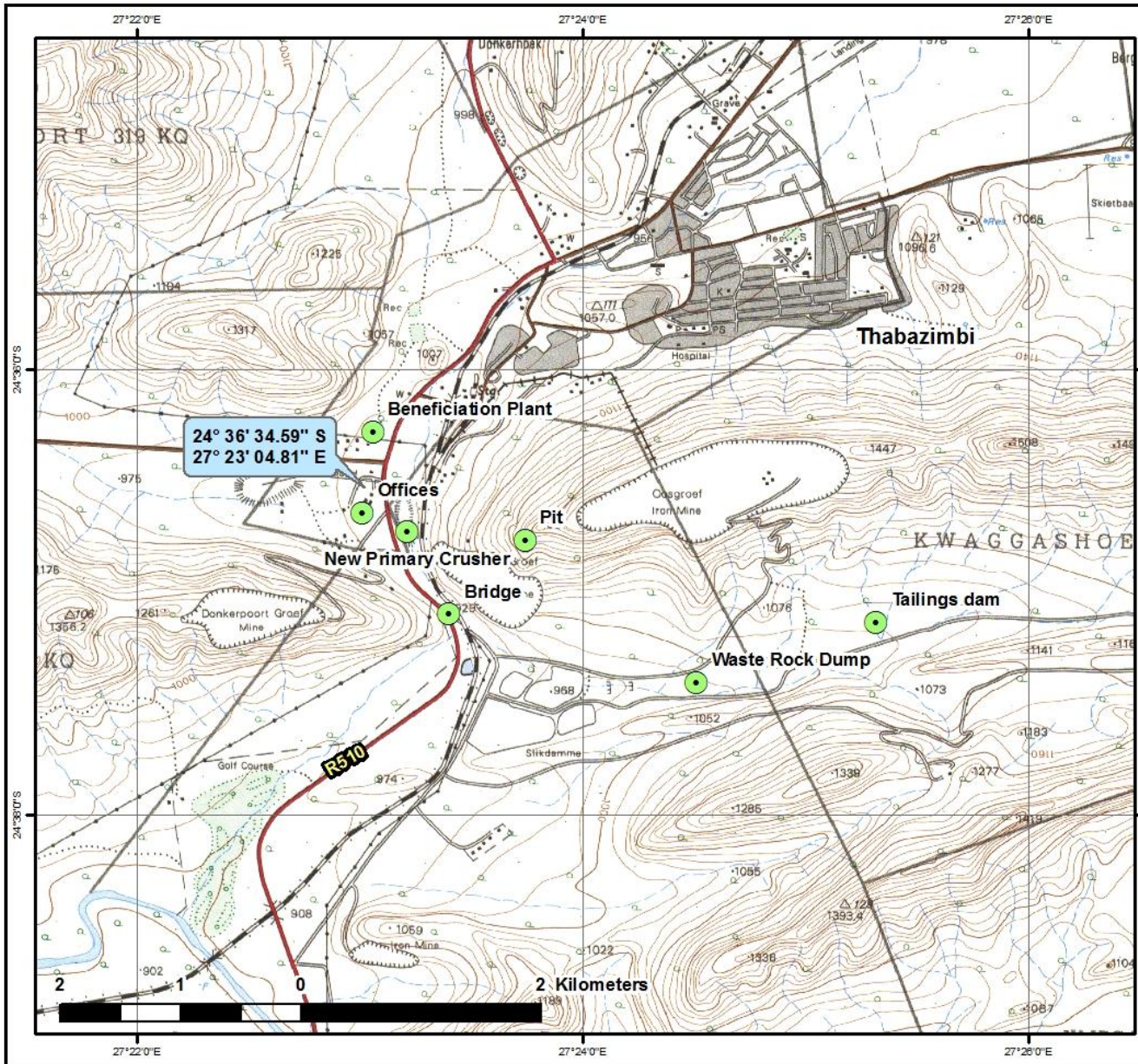
A public meeting will be held at the Kumba Cinema Hall on **4th September 2012 at 17:00**. Please R.S.V.P before the 31st of August 2012.

Independent Environmental Assessment Practitioner:

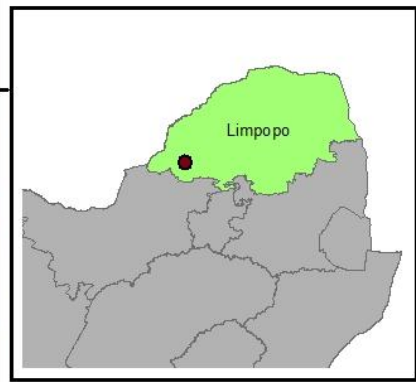
Shangoni Management Services (Pty) Ltd.
PO Box 74726, Lynnwood Ridge, Pretoria, 0040.
Contact Person: Mrs Lee-Anne Fellowes
Tel: (012) 807 7036, Cell: 082 456 3208, Fax: (012) 807 1014, Fax to E-mail: 086 639 7956,
E-mail: leeanne@shangoni.co.za, For Online Participation go to www.shangoni.co.za and click on Public Participation.

6. INVITATION TO PARTICIPATE

Should you wish to be included in the register of Interested and Affected Parties or comment on this application, please submit your name, contact information, and interest in the matter **in writing** to the above address not later than **17th September 2012**.



AngloAmerican Phoenix Locality



Legend

- Project Phoenix Infrastructure

Date: 2012/03/13
 Coordinate System:
 WGS 1984
 Datum: WGS 1984

