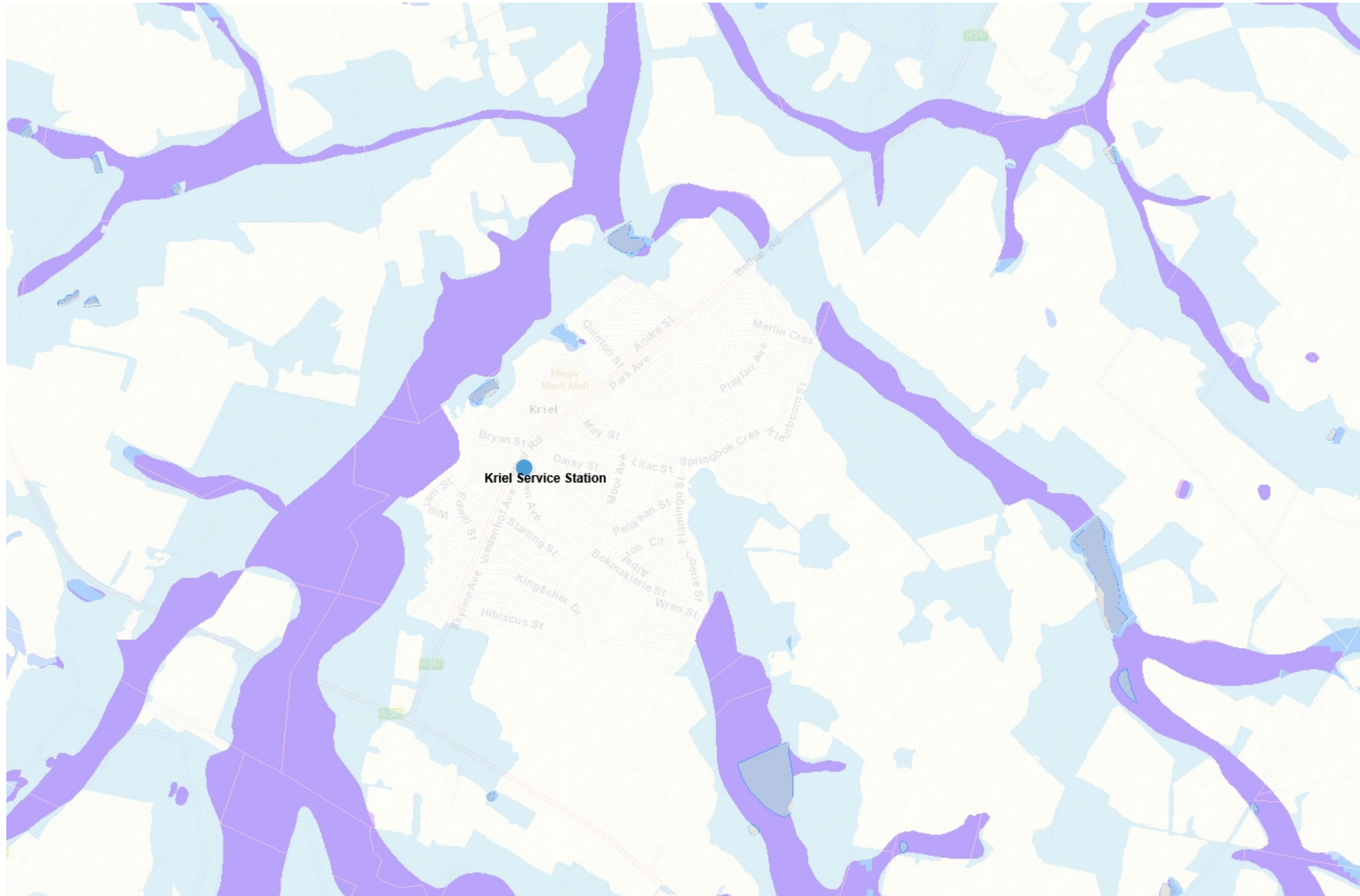


Freshwater CBAs and ESAs Map

Kriel Service Station

Description

Enter a description of the envisaged development (up to 100 words)



Legend

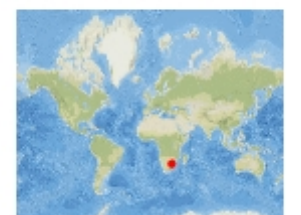
Freshwater CBAs and ESAs

- CBA: Aquatic species
- CBA: Rivers
- CBA: Wetlands
- Dams
- ESA: Important subcatchments
- ESA: Wetland clusters
- ESA: Wetlands
- Heavily modified
- Other Natural Areas
- Mpumalanga Biodiv. Conserv. Plan boundary
- South African parent farm cadaster
- Wetland clusters (NFEPA)
- National wetlands map 4 (NFEPA)
- World Street Map

1: 36 111



1,8 0 0,92 1,8 Kilometers



National Wetlands Map

Kriel Service Station

Description

Enter a description of the envisaged development (up to 100 words)



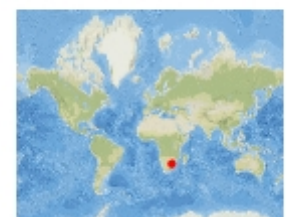
Legend

- Mpumalanga Biodiv. Conserv. Plan boundary
 - South African parent farm cadaster
 - Wetland clusters (NFEPA)
 - National wetlands map 4 (NFEPA)
- National Wetlands Map 4 - NWCS L4 classe:
- Slope: Seep
 - Slope: Valleyhead seep
 - Slope: Depression
 - Valley floor: Channelled valley-bottom wetland
 - Valley floor: Unchannelled valley-bottom wetland
 - Valley floor: Floodplain wetland
 - Valley floor: Depression
 - Plain: Floodplain wetland
 - Plain: Unchannelled valley-bottom wetland
 - Plain: Depression
 - Plain: Flat
 - Bench: Depression
 - Bench: Flat
- World Street Map

1: 36 111



1,8 0 0,92 1,8 Kilometers



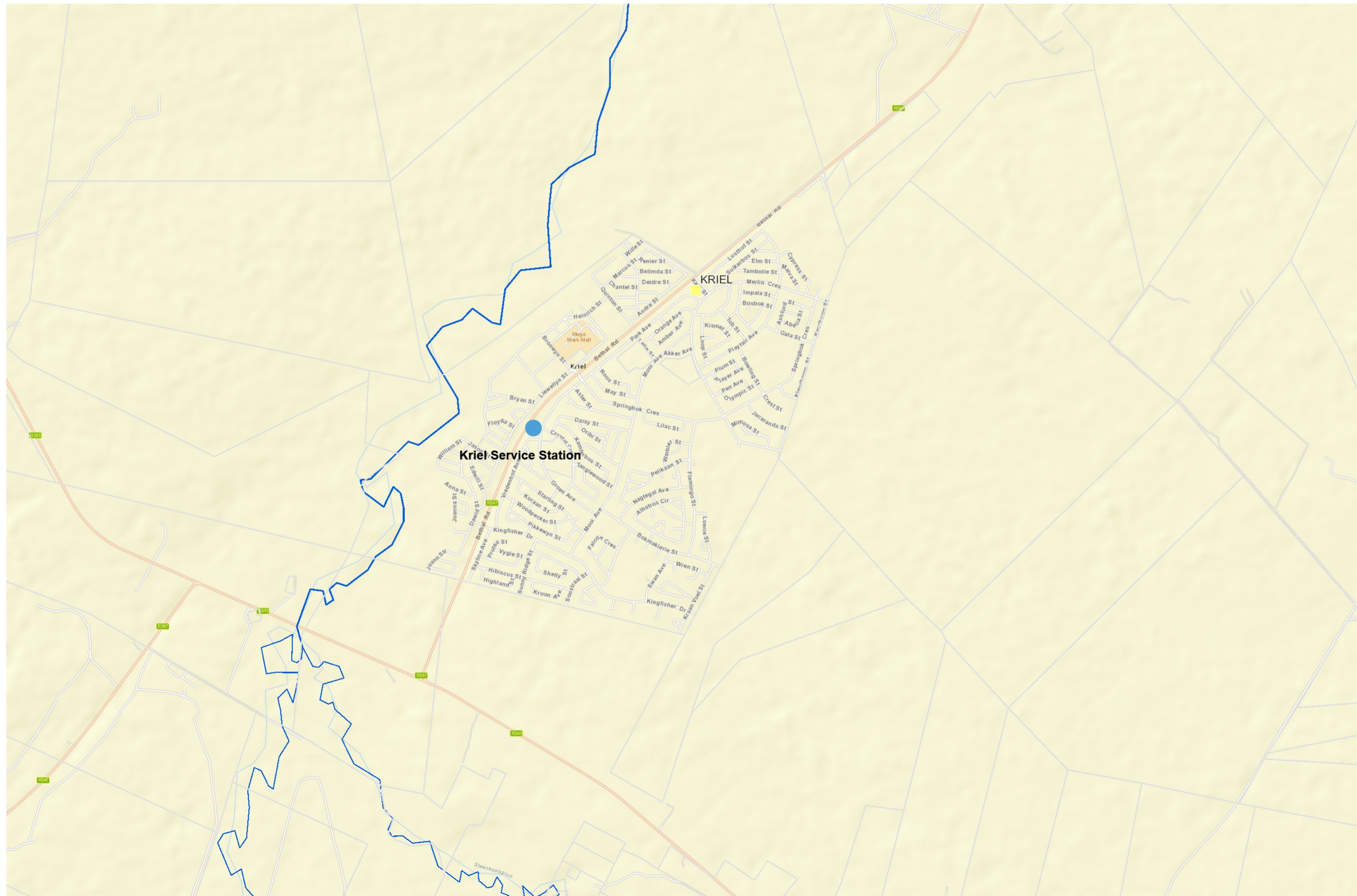
NFEPA Rivers Map

Description

Enter a description of the envisaged development (up to 100 words)

Legend

- Towns
- Local municipalities
- Farm boundaries
- Water management areas
- Sub water management areas
- Fish points**
- Fish sanctuary: CR/EN fish
- Fish sanctuary: other fish
- Wetland cluster
- NFEPA rivers**
- 1
- 5
- 10
- Formal land-based (NBA 2011)
- Informal land-based (NPAES)
- Marine - MPA (NBA 2011)
- River FEPAs**
- River FEPA and associated sub-quaternary catchment
- Fish Support Area and associated sub-quaternary catc
- Phase 2 FEPA and associated sub-quaternary catchm
- Upstream management area
- World Street Map**



1: 36 111



1,8 0 0,92 1,8 Kilometers

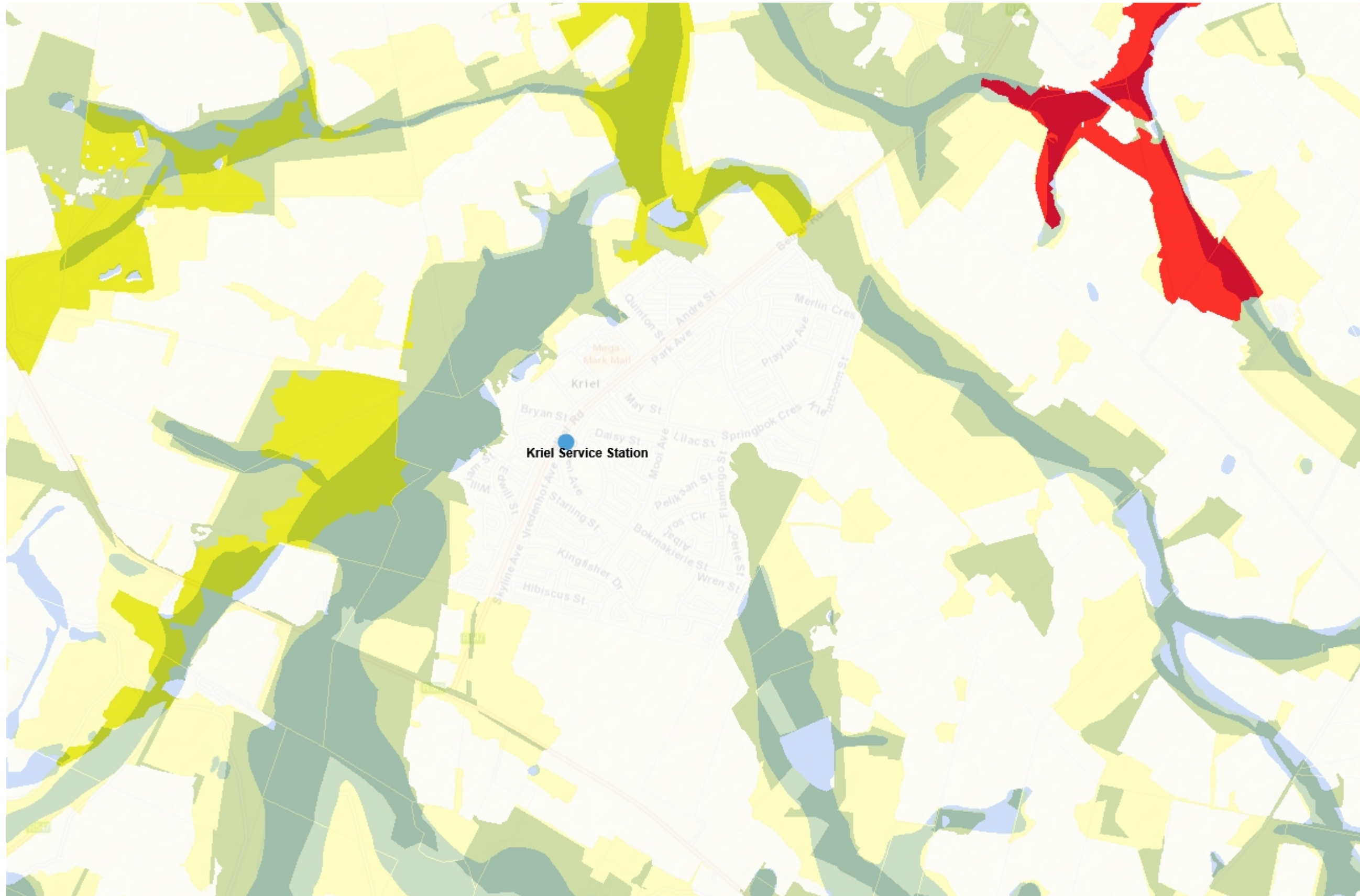


Terrestrial CBAs Map

Kriel Service Station

Description

Enter a description of the envisaged development (up to 100 words)



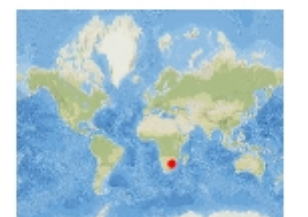
Legend

- Terrestrial CBAs**
- PA National Parks & Nature Reserves
 - PA Protected Environment: Natural
 - PA Protected Environment: Modified
 - CBA Irreplaceable
 - CBA Optimal
 - ESA Landscape corridor
 - ESA Local corridor
 - ESA Species Specific
 - ESA Protected Area buffer
 - Other Natural Areas
 - Moderately modified- Old lands
 - Heavily modified
- Mpumalanga Biodiv. Conserv. Plan boundary
 - South African parent farm cadaster
 - Wetland clusters (NFEPA)
 - National wetlands map 4 (NFEPA)
- World Street Map

1: 36 111



1,8 0 0,92 1,8 Kilometers





Threatened Ecosystems Map

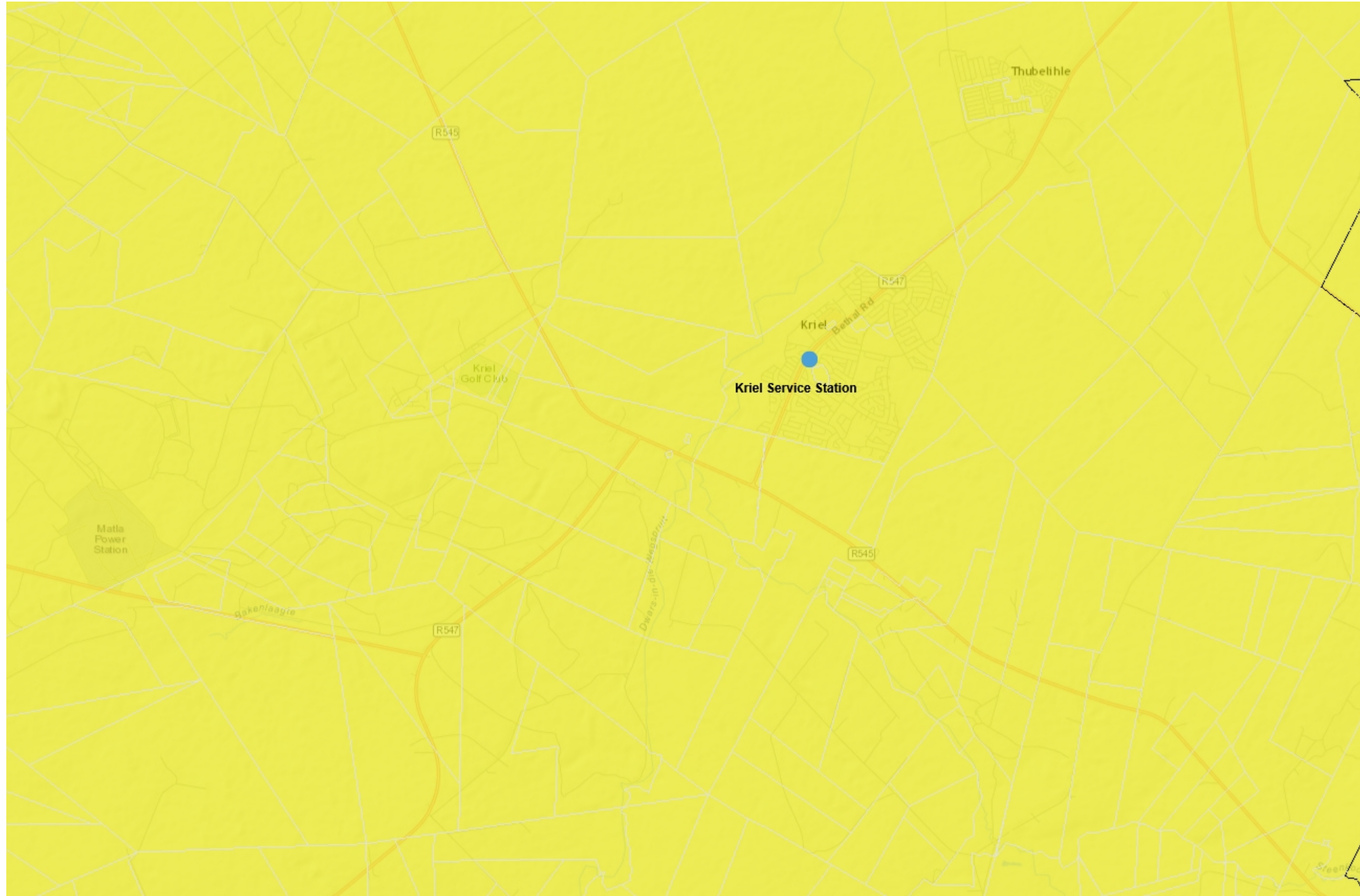
Kriel Service Station

Description

Enter a description of the envisaged development (up to 100 words)

Legend

-  South African municipal boundaries 2009
-  South African parent farm cadaster
- Threatened ecosystems original extents**
-  Critically Endangered
-  Endangered
-  Vulnerable
-  World Street Map



1: 72 223



3,7 0 1,83 3,7 Kilometers