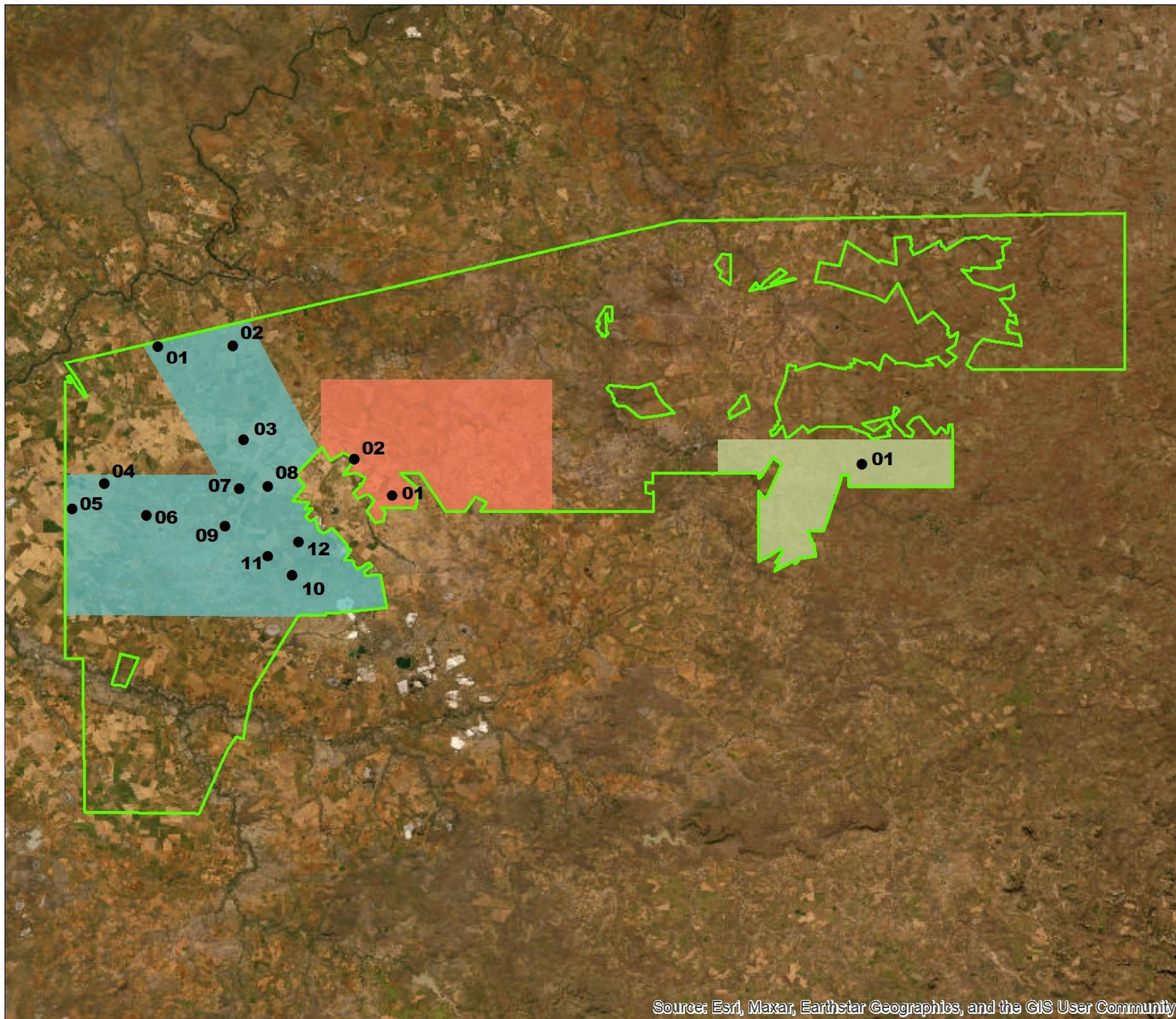


## APPENDIX E: WELL SITE LOCALITY PLAN

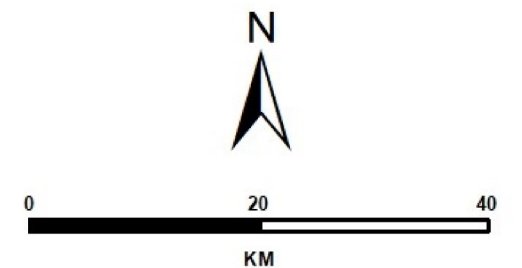


Source: Esri, Maxar, Earthstar Geographics, and the GIS User Community



**Legend**

- Exploration Right 318
- Exploration Target Areas**
- Target Area 1
- Target Area 2
- Target Area 3
- Well Sites



Scale: 1:1 000 000 @ A3  
 Coordinate System: GCS WGS 1984  
 Datum: WGS 1984

**RHINO OIL AND GAS  
 EXPLORATION SOUTH AFRICA  
 (PTY) LTD**

**EXPLORATION RIGHT 318  
 WELL SITES LOCALITY PLAN**



PO BOX 1596  
 CRAMERVIEW  
 JOHANNESBURG  
 2060

T: +27 (11) 467-0945  
[www.slrconsulting.com](http://www.slrconsulting.com)

Project No: 720.18034.00018

Prepared By: BG

Map Ref No: 05

Date: 21/02/2023