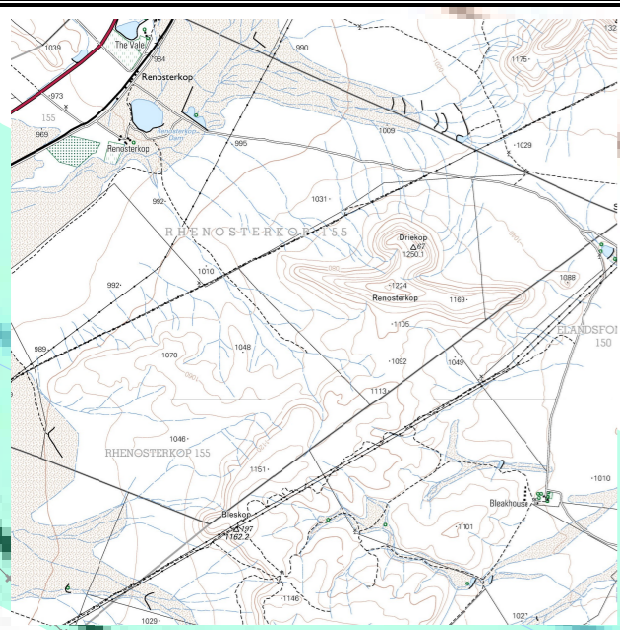


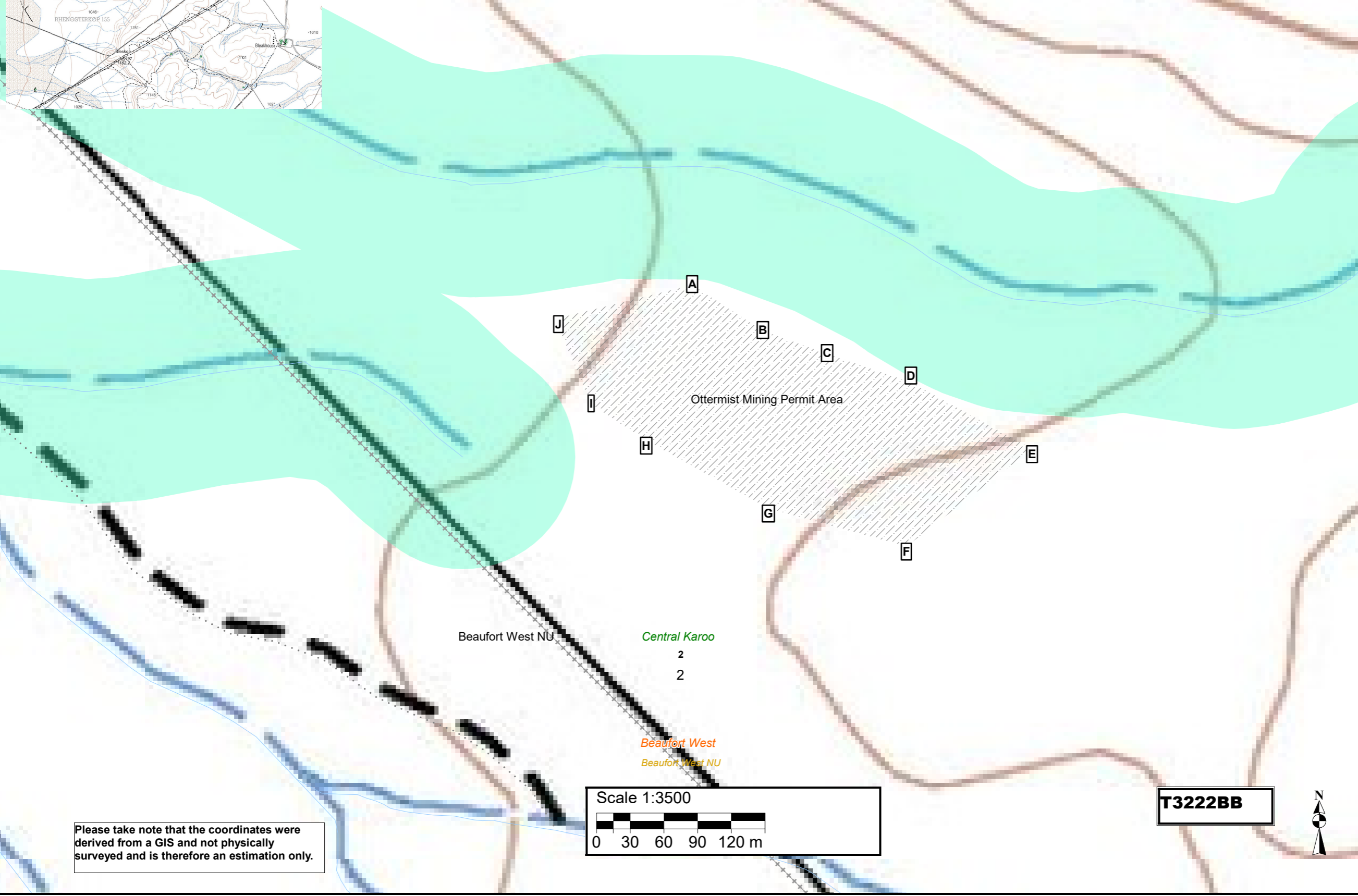
# Rehabilitation Map



- Legend**
- Barriers
  - FENCE
  - River
  - DRY WATER COURSE EXTENT
  - NON-PERENNIAL CENTER LINE
  - Roads
  - TRACK FOOTPATH
  - Western Cape Province
  - Central Karoo - District Municipality
  - Beaufort West - Local Municipality
  - Wards no - 2

**GENERAL REHABILITATION:** The environment affected by the mining operations will be rehabilitated by the holder, as far as is practicable, to its natural state or to a predetermined and agreed to standard or land use which conforms with the concept of sustainable development. The affected environment will be maintained in a stable condition that will not be detrimental to the safety and health of humans and animals and that will not pollute the environment or lead to the degradation thereof. All gates and fences erected by the holder which is not required by the landowner/tenant, will be removed and the situation restored to the pre mining situation. **ACCESS ROADS:** Roads that will no longer be used will be ripped / ploughed, to ensure the regrowth of vegetation. Imported road construction materials which may hamper regrowth of vegetation will be removed and disposed of in an approved manner prior to rehabilitation. **EXCAVATION AREA:** Due to the impracticality of importing large volumes of fill to restore the quarry area to its original topography, the rehabilitation option is to develop the quarry into a minor landscape feature. This entails creating a series of irregular benches along the quarry faces, the top edges of each face being blasted away to form slopes on the benches below, thereby reducing the overall face angle or sloping the quarry to an acceptable slope as recommended by the DMR. Fill and topsoil was placed over the benches or slopes to provide a suitable medium for the establishment of vegetation, especially trees which will break up the line of the faces and enhance their appearance. The floor of the quarry will be capped with suitable soil material and re-vegetated. Rocks and coarse material removed from the excavation will be dumped into the excavations. **PROCESSING AREA:** Coarse natural material used for the construction of ramps must be removed and dumped into the excavations. On completion of mining operations, the surface of the processing areas especially if compacted due to hauling and dumping operations, was scarified to a depth of at least 300mm and graded to an even surface condition and the previously stored topsoil will be returned to its original depth over the area. Prior to replacing the topsoil the material that was removed from the processing area will be replaced in the same order as it originally occurred. **FINAL REHABILITATION:** All infrastructure, equipment, plant, temporary housing and other items used during the mining period will be removed from the site (section 44 of the MPRDA) Waste material of any description, including receptacles, scrap, rubble and tyres, will be removed entirely from the mining area and disposed of at a recognised landfill facility. It will not be permitted to be buried or burned on the site.

100m buffer



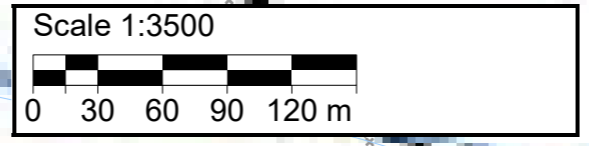
**Proposed mining area coordinates:**  
 A -32,239819°S; 22,88081°E  
 B -32,240186°S; 22,881478°E  
 C -32,240371°S; 22,882083°E  
 D -32,240599°S; 22,882873°E  
 E -32,241133°S; 22,884016°E  
 F -32,241913°S; 22,882831°E  
 G -32,241608°S; 22,881529°E  
 H -32,241064°S; 22,880377°E  
 I -32,240774°S; 22,879858°E  
 J -32,240092°S; 22,879519°E  
 A -32,239819°S; 22,88081°E

A 32°14'23,348"S; 22°52'50,916"E  
 B 32°14'24,67"S; 22°52'53,321"E  
 C 32°14'25,336"S; 22°52'55,499"E  
 D 32°14'26,156"S; 22°52'58,343"E  
 E 32°14'28,079"S; 22°53'2,458"E  
 F 32°14'30,887"S; 22°52'58,192"E  
 G 32°14'29,789"S; 22°52'53,504"E  
 H 32°14'27,83"S; 22°52'49,357"E  
 I 32°14'26,786"S; 22°52'47,489"E  
 J 32°14'24,331"S; 22°52'46,268"E  
 A 32°14'23,348"S; 22°52'50,916"E

**Mining permit application area:**  
 5 ha  
**Client:**  
 Otter Mist Trading (Pty) Ltd  
 2017/238605/07

**Consultant:**

Please take note that the coordinates were derived from a GIS and not physically surveyed and is therefore an estimation only.



**T3222BB**

