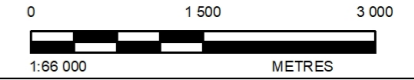


- LEGEND**
- Built Environment
  - Burial Sites
  - Ruins
  - Option 1 Powerline 2km
  - Option 1a Water (16km)
  - Option 2 Powerline 7km
  - Option 3 Powerline 1.5km
  - H2 option 3 (25ha)
  - 100m Wetland buffer
  - Wetlands
  - Rivers - Perennial
  - Rivers - Non perennial
  - Air Quality Dwelling Buffer (500m)
- Bat Sensitivity**
- High Sensitivity
  - 200m High Sensitivity Buffer
  - Moderate Sensitivity
  - 100m Moderate Sensitivity Buffer

- Habitat Sensitivity**
- Wetlands, Very High
  - Riparian, Very High
  - Pan, High
  - Open water, High
  - Floodplain, High
  - Grassland, High
  - Grassland, Medium-High
  - Secondary wetland, Medium-High
  - Disturbed wetland, Medium
  - Cultivated pan, Medium-Low
  - Secondary grassland, Medium-Low
  - Alien trees, Low
  - Cultivation, Low
  - Disturbed, Low
  - Mine, Low



**NOTE(S)**  
 1. LINE NOTES  
 2. LINE NOTES  
 3. LINE NOTES

**REFERENCE(S)**  
 1. COORDINATE SYSTEM: HARTEBEESTHOEK94 LO29  
 2. SERVICE LAYER CREDITS: SOURCES: ESRI, HERE, GARMIN, INTERMAP, INCREMENT P CORP., GEBCO, USGS, FAO, NPS, NRCAN, GEOBASE, IGN, KADASTER NL, ORDNANCE

**CLIENT**  
 ENERTRAG SA PTY LTD

**PROJECT**  
 HENDRINA GREEN HYDROGEN

**TITLE**  
 OPTION 1 SENSITIVITY

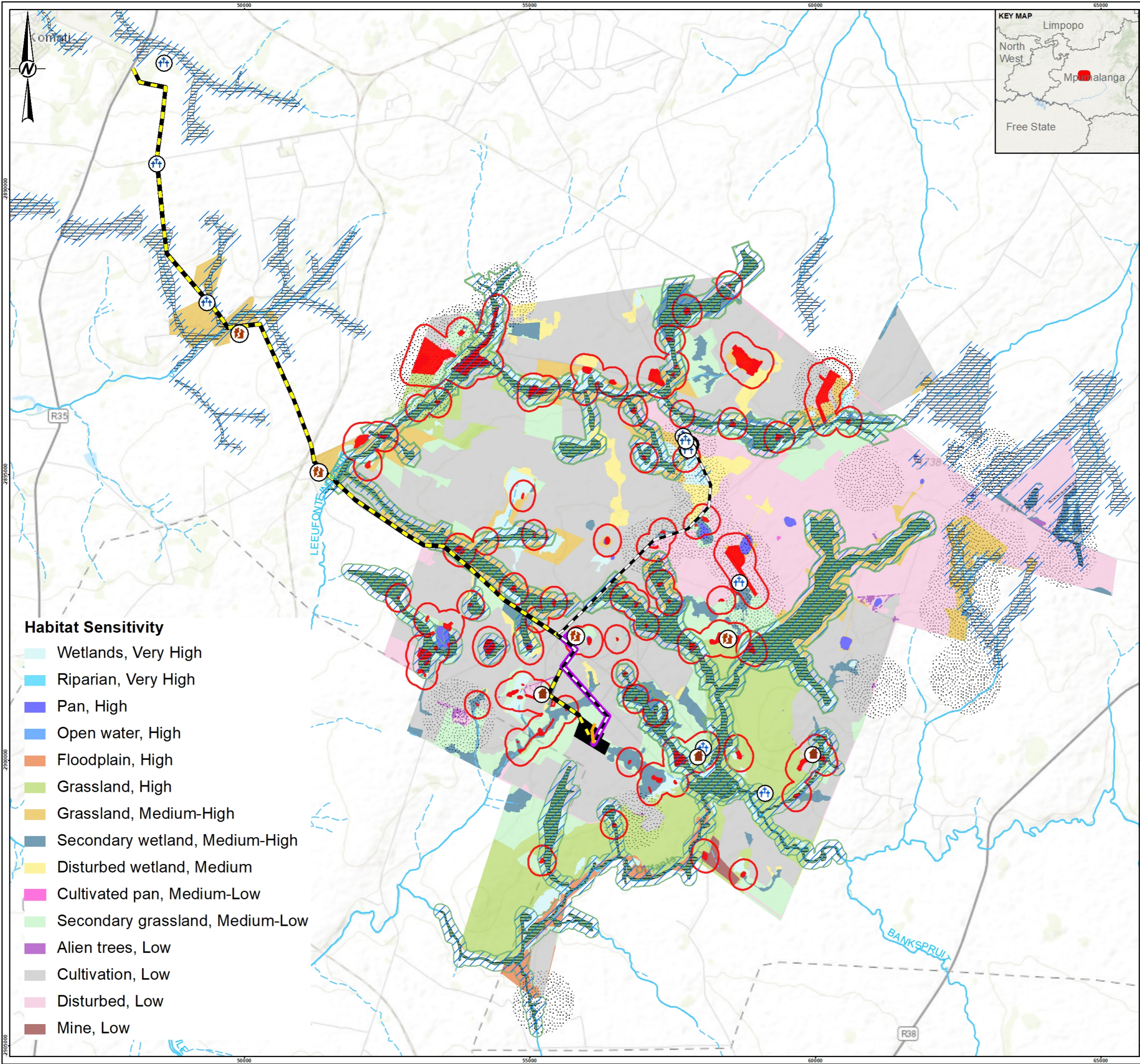
<b>CONSULTANT</b>		YYYY-MM-DD	2023/04/28
		DESIGNED	KM
		PREPARED	KM
		REVIEWED	TN
		APPROVED	TN

**PROJECT NO.** 41104000      **CONTROL**      **REV.**      **FIGURE**

PATH: \\na1-v-arcc\GIS\GIS\WSP\Projects\41104000 - Hendrina Green Hydrogen\GIS\WSP\41104000\_Sensitivity\_Report\_v2.mxd PRINTED ON: 2023/04/28 AT: 1:44:54 pm

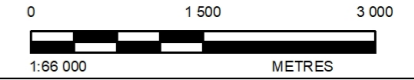
THIS MEASUREMENT DOES NOT MATCH WITH THE SHOWN. THE SHEET SIZE HAS BEEN MODIFIED FROM ISO A





- LEGEND**
- Built Environment
  - Burial Sites
  - Ruins
  - Option 1 Powerline 3km
  - Option 2 Powerline 8km
  - Option 2a Water (17km)
  - Option 3 Powerline 0.5km
  - H2 Option 2 (25ha)
  - 100m Wetland buffer
  - Wetlands
  - Rivers - Perennial
  - Rivers - Non perennial
  - Air Quality Dwelling Buffer (500m)
- Bat Sensitivity**
- High Sensitivity
  - 200m High Sensitivity Buffer
  - Moderate Sensitivity
  - 100m Moderate Sensitivity Buffer

- Habitat Sensitivity**
- Wetlands, Very High
  - Riparian, Very High
  - Pan, High
  - Open water, High
  - Floodplain, High
  - Grassland, High
  - Grassland, Medium-High
  - Secondary wetland, Medium-High
  - Disturbed wetland, Medium
  - Cultivated pan, Medium-Low
  - Secondary grassland, Medium-Low
  - Alien trees, Low
  - Cultivation, Low
  - Disturbed, Low
  - Mine, Low



**NOTE(S)**  
 1. LINE NOTES  
 2. LINE NOTES  
 3. LINE NOTES

**REFERENCE(S)**  
 1. COORDINATE SYSTEM: HARTEBEESTHOEK94 LO29  
 2. SERVICE LAYER CREDITS: SOURCES: ESRI, HERE, GARMIN, INTERMAP, INCREMENT P CORP., GEBCO, USGS, FAO, NPS, NRCAN, GEOBASE, IGN, KADASTER NL, ORDNANCE

**CLIENT**  
 ENERTRAG SA PTY LTD

**PROJECT**  
 HENDRINA GREEN HYDROGEN

**TITLE**  
 OPTION 2 SENSITIVITY

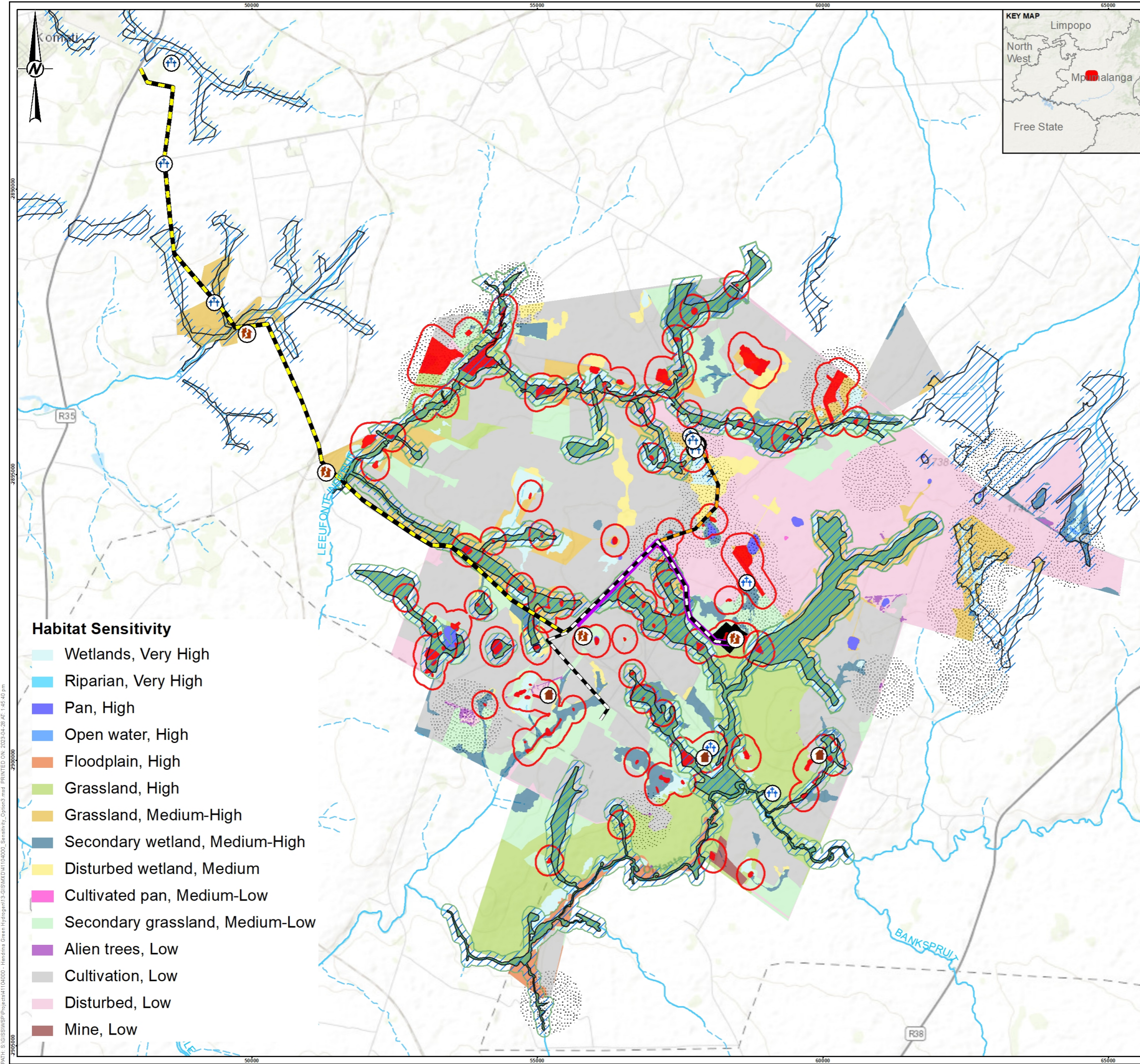
<b>CONSULTANT</b>		YYYY-MM-DD	2023/04/28
		DESIGNED	KM
		PREPARED	KM
		REVIEWED	TN
		APPROVED	TN

**PROJECT NO.** 41104000      **CONTROL**      **REV.**      **FIGURE**

PATH: \\vha1\ARC\GIS\GIS\WSP\Projects\41104000 - Hendrina Green Hydrogen\GIS\WSP\41104000\_Sensitivity\_Choice\_2.mxd PRINTED ON: 2023/04/28 AT: 1:48:13 pm

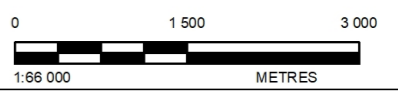
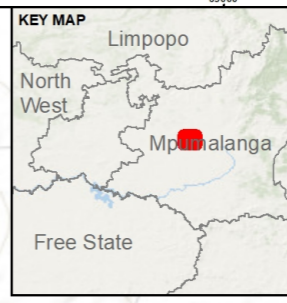
THIS MEASUREMENT DOES NOT TAKE INTO ACCOUNT THE STRIKE SIZE HAS BEEN MODIFIED FROM 150mm TO 25mm





- Habitat Sensitivity**
- Wetlands, Very High
  - Riparian, Very High
  - Pan, High
  - Open water, High
  - Floodplain, High
  - Grassland, High
  - Grassland, Medium-High
  - Secondary wetland, Medium-High
  - Disturbed wetland, Medium
  - Cultivated pan, Medium-Low
  - Secondary grassland, Medium-Low
  - Alien trees, Low
  - Cultivation, Low
  - Disturbed, Low
  - Mine, Low

- LEGEND**
- Built Environment
  - Burial Sites
  - Ruins
  - Option 1 Powerline 5km
  - Option 2 Powerline 5km
  - Option 3 Powerline 7km
  - Option 3a (19km)
  - H2 option 3 (25ha)
  - 100m Wetland buffer
  - Wetlands
  - Rivers - Perennial
  - Rivers - Non perennial
  - Air Quality Dwelling Buffer (500m)
- Bat Sensitivity**
- High Sensitivity
  - 200m High Sensitivity Buffer
  - Moderate Sensitivity
  - 100m Moderate Sensitivity Buffer



**NOTE(S)**

- LINE NOTES
- LINE NOTES
- LINE NOTES

---

**REFERENCE(S)**

- COORDINATE SYSTEM: HARTEBEESTHOEK94 LO29
- SERVICE LAYER CREDITS: SOURCES: ESRI, HERE, GARMIN, INTERMAP, INCREMENT P CORP., GEBCO, USGS, FAO, NPS, NRCAN, GEOBASE, IGN, KADASTER NL, ORDNANCE

---

CLIENT  
**ENERTRAG SA PTY LTD**

---

PROJECT  
**HENDRINA GREEN HYDROGEN**

---

TITLE  
**OPTION 3 SENSITIVITY**

CONSULTANT	YYYY-MM-DD	2023/04/28
	DESIGNED	KM
	PREPARED	KM
	REVIEWED	TN
	APPROVED	TN

---

PROJECT NO.	CONTROL	REV.	FIGURE
41104000			

PATH: S:\GIS\WSP\Projects\41104000 - Hendrina Green Hydrogen\13\_GIS\MapDocs\13\_Sensitivity\_Options.mxd PRINTED ON: 2023/04/28 AT: 1:45:40 pm

THIS MEASUREMENT DOES NOT MATCH WHAT IS SHOWN ON THE SHEET. THE SHEET SIZE HAS BEEN MODIFIED FROM 150 x 110mm TO 25mm.