

DE BEERS GROUP

VLNR LODGE

Pre-application Focus Group Meetings
5 November 2020

0

AGENDA



- Purpose of meeting
- Project location
- Project description
- Legislative requirements
- Way forward
- Contact details

1

PURPOSE OF MEETING

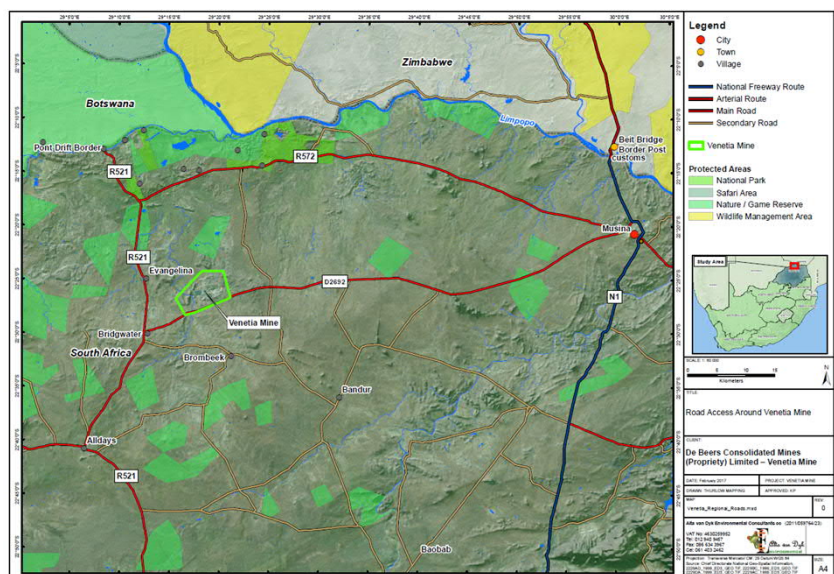


- Introduce Venetia Limpopo Nature Reserve (VLNR) Lodge project
- Confirm environmental authorisation process
- Confirm specialist studies to be undertaken
- Confirm way forward

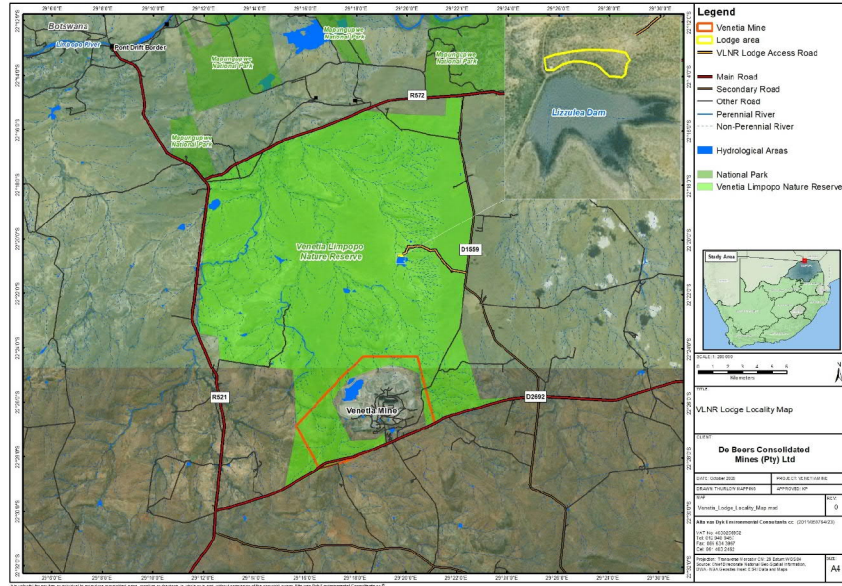
PROJECT LOCATION – VENETIA MINE



- Limpopo Province
- Venetia Mine – various farms namely Venetia 103MS, Krone 104MS, Rugen 105MS and Drumsheugh 99MS,
- ± 80 km west of Musina
- ± 40 km north east of Alldays
- Musina Local Municipality
- Vhembe District Municipality
- Adjacent to the north, east and west – De Beers owned Venetia Limpopo Nature Reserve (VLNR) – 36 000 Ha



VLNR LODGE LOCATION



4

4

VLNR LODGE PROJECT DESCRIPTION



Venetia Mine is planning the development of a 12 room lodge in the VLNR

The facility will include the following:

- Gravel access road (existing road to be used)
- 12 rooms (24 people maximum)
- Central building (kitchen and dining area)
- Swimming pool and lapa
- Storeroom
- Electrical boundary fence
- Potable water – borehole / dam abstraction
- 12 carport parking bay
- Reception and administrative office
- General and waste storage facility
- Staff quarters and locker room



Google Earth



5

5

LEGISLATIVE REQUIREMENTS



Environmental Authorisation

- Basic Assessment process in terms of the National Environmental Management Act (NEMA) Environmental Impact Assessment (EIA) Regulations
- Various activities triggered in Listing 1 and Listing 3 of the 2014 EIA Regulations (as amended in 2017)
 - Clearance of indigenous vegetation
 - Infrastructure within 32m of watercourse
 - Lodge development that sleeps 15 or more people

Water Use Licence

- Water Use Licence Application process in terms of the National Water Act (NWA)
- Section 21 water uses triggered
 - Potable water - Abstraction and storage of groundwater
 - Sewage Disposal – Package Plant with irrigation of effluent on lawn areas
 - Location in relation to watercourse

SPECIALIST STUDIES



- Groundwater
- Surface water
- Soils
- Vegetation
- Heritage

WAY FORWARD



- Submit Environmental Authorisation application form
- Basic Assessment Report available for public comment (30 days)
- Submit Basic Assessment Report to LEDET and commenting authorities
- Receive record of decision

CONTACT DETAILS



- Suzanne van Rooy
Alta van Dyk Environmental Consultants
suzanne@avde.co.za
078 196 6002/012

