

BACKGROUND INFORMATION DOCUMENT (BID)
ENVIRONMENTAL AUTHORISATION AND WATER USE LICENCE
APPLICATION FOR THE PROPOSED RELOCATION AND
ESTABLISHMENT OF THE SERITARITA SECONDARY SCHOOL IN
MOGALAKWENA LOCAL MUNICIPALITY LIMPOPO PROVINCE



INTRODUCTION AND BACKGROUND

Seritarita Secondary School is located in the Skimming and Leruleng Villages approximately 25 km northwest of the town of Mokopane, Limpopo Province, in the Mogalakwena Local Municipal area. The school has approximately 840 learners and 24 teachers. The school is adjacent to Anglo American Platinum (AAP) Rustenburg Platinum Mines' Mogalakwena Mine (Mogalakwena Mine), and specifically its South Pit. The open pit is impacting the school due to its close proximity to the opencast operations including increased dust fallout, noise and tremors which poses adverse health and safety risks. Learning at the school as well as the productivity of the mine are impacted by their incompatible co-existence.

AAP is planning to relocate both Skimming and Leruleng communities, who are also affected by the mining activities. The relocation of these communities is planned for 2027/2028. As the planned extension of the South Pit (Cut 11) will place Seritarita Secondary School within the regulated blast zone (within 500 m) of the South Pit, AAP is proposing to temporarily relocate the school outside of the blast zone, but still within the Skimming and Leruleng communities. The proposed location for the temporary relocation is approximately 2,5 km west from the school's current location. The school will be permanently relocated with the overall Skimming and Leruleng Villages relocation planned by AAP.

PURPOSE OF THIS DOCUMENT

This Background information document (BID) provides potential stakeholders with information about the proposed project, the regulatory processes and how to become involved in this process.

Alta van Dyk Environmental Consultants cc (AVDE) has been appointed as the Environmental Assessment Practitioner (EAP) for this project to undertake the environmental authorisation, water use licence application and associated public participation process.

You are invited to register as in Interested and Affected Party (I&AP) for this project and to comment or raise any issue of concern. To register for the proposed project and receive additional notifications, please complete the enclosed registration form, and send to Alta van Dyk Environmental Consultants.

LOCATION OF THE PROPOSED PROJECT

The proposed relocation and establishment site is on the farm Zwartfontein 814 LR, administered by the Department of Rural Development and Land Reform (DARDLR) within a tribal area administered by the Mapela Traditional Council (MTC). A site of approximately 28 ha has been earmarked, of which only about 13 ha will be utilised for the relocated school. The proposed site is located directly east of the Mapela Road. The property falls within the jurisdiction of the Mogalakwena Local Municipality and the Waterberg District Municipality. Refer to Figure 2 for a locality map.

Centre point coordinates for the proposed relocation site are: 23°59'11.97"S
28°51'52.19"E

PROJECT DESCRIPTION

The relocated school will cover an area of approximately 13 ha. The school will be established to accommodate the pupils and mobile classrooms and staff buildings are proposed for rapid construction and demolition.

Access:

Access to the relocated school will be obtained via the Mapela Provincial Road. A new access road from the Mapela Road to the newly constructed school will be constructed. A two lane single carriage way road (one lane in each direction) approximately 700 m long and 7m wide.

An additional access road linking the new relocated school to Skimming Village will be constructed on the perimeter of the school site.

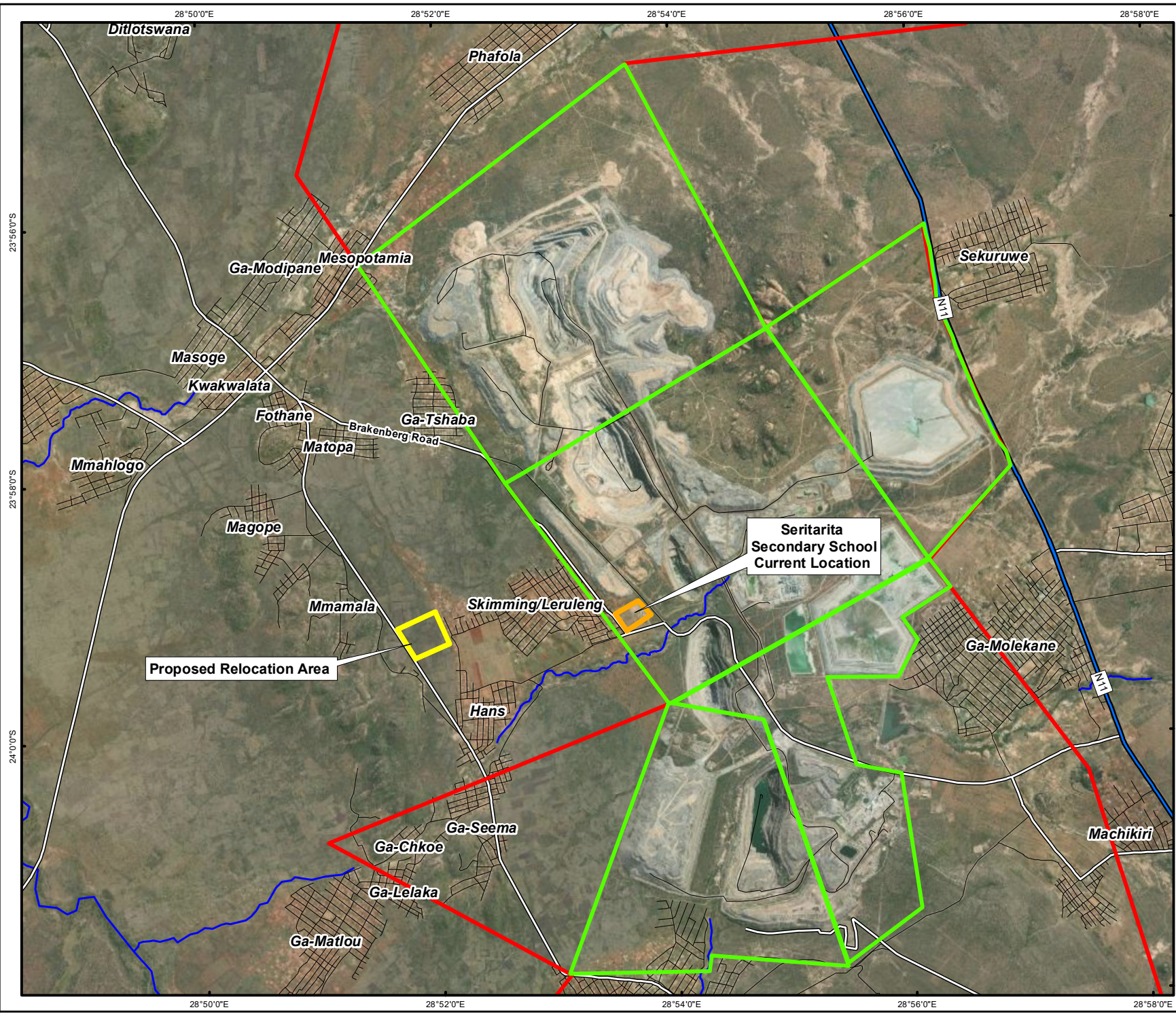
Facilities:

The following pre-fabricated building facilities will be constructed at the relocated school location (refer to Figure 1 for typical examples):

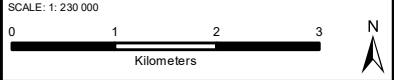
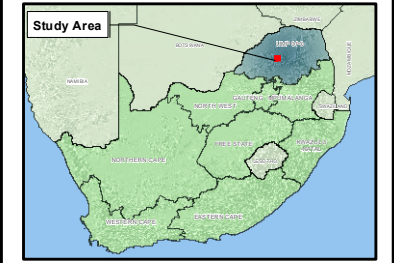
- A large size Administration Block
- Classroom Blocks comprising 25 classrooms
- Library Block with storage
- Computer Laboratory with storage
- Science Laboratory with storage
- Biology Laboratory with storage
- Multi-purpose classroom block (two classrooms)
- Kitchen/ Nutrition Centre block
- Three Technical Workshops
- School Hall
- Ablution Blocks, (Staff, Boys and Girls Blocks)
- General Store Block
- Sport Changing Rooms
- The Caretaker's Unit
- Soccer field with running tracks
- Two combination courts
- Outside Assembly area



Figure 1: Typical examples of pre-fabricated classrooms



- ### Legend
- Seritarita Secondary School
 - Proposed Relocation Area
 - Mining Rights Area
 - Surface Rights Area
 - Motorway
 - Tertiary Road
 - Street/Road
 - Track
 - Rivers



TITLE:
Proposed Relocation of Seritarita Secondary School, Mokgalakwena Mine, Limpopo Province

CLIENT:
Anglo American Platinum, Rustenburg Platinum Mine, Mogalakwena Mine

DATE: April 2023 PROJECT: MOKGALAKWENA

DRAWN: THURLOW MAPPING APPROVED: KP

MAP: School_Relocation_Rev1.mxd REV: 1

Alta van Dyk Environmental Consultants cc (2011/059764/23)
 VAT No: 4630259952
 Tel: 012 940 9457
 Fax: 086 634 3967
 Cel: 061 403 2462

Projection: Transverse Mercator CM: 29 Datum: WGS 84 SIZE: A4
 Source: OSM Vector 2022 -
 Imagae: ESRI World Imagery Layer
 Inset: ESRI Data and Maps

Power supply:

The total school system's daily energy requirement has been estimated as 350 kWh/day. A hybrid power supply approach will be followed making use of the following:

Connected to Eskom Power Grid: 3 Phase Power will be supplied by Eskom. A Medium Voltage/Low Voltage (MV/LV) powerline has been identified within close proximity (~600m away) of the proposed relocation site. An underground cable will be installed from the school to a ground mounted approximately 100 kVA transformer. No overhead powerlines will be required. HVAC System Energy efficient system for air conditioning will be used.

Solar Photovoltaic (PV): AAP will install a grid tied solar photovoltaic installation with battery backup to provide additional power for essential services and buildings during loadshedding.

Back-Up Generator: A backup generator will be available.

Water supply:

Each learner is expected to require 25-30 litres of water per day, therefore, the estimated daily demand is approximately 40 000ℓ/day (14 600m³ per annum).

Water for potable and sanitary use will be sourced from a newly drilled borehole. A water filtration plant will be provided and water will be stored in 1 x 40m³ (40 000ℓ) elevated steel sectional tank.

Carting water trucks will be used as a backup option to the borehole water supply.

In addition, rainwater and grey water harvesting will be implemented.

Sanitation:

There is no bulk municipality sewage reticulation in the vicinity of the project site. As municipal sanitation is not present in the area, an underground concrete conservancy tank is planned with a sewer treatment plant installed. The estimated sewage flow per day is ~37 litres/person/day. A conservancy tank together with a sewerage treatment plant (waste water treatment plant) will be installed to collect and treat sewage from the school facilities. The resultant grey water which shall be fit for use from the treatment process shall be used for irrigation of the school landscaped areas and sports field. Alternative options of sewage disposal/treatment are being explored, such as dry ventilated toilet systems.

LEGISLATIVE REQUIREMENTS

The environmental related authorisations required for the proposed relocation of Seritarita Secondary School are as follows:

- A Basic Assessment process in terms of the National Environmental Management Act (Act No. 107 of 1998) (NEMA) and the Environmental Impact Assessment (EIA) Regulations. The competent authority for this process is the Limpopo Department of Economic Development, Environment and Tourism (LEDET).
- A Water Use Licence Application (WULA) in terms of the National Water Act (Act No. 36 of 1998) (NWA). The competent authority for this process is the Department of Water and Sanitation (DWS).

The abovementioned environmental related authorisation processes are running concurrently and require the involvement of stakeholders. Therefore, a single integrated stakeholder engagement process will be undertaken in compliance with the relevant legislation. The legislated timeframes are illustrated in Figure 2.

SPECIALIST STUDIES

The following specialist studies are being undertaken in support of the environmental authorisation and water use licence application processes:

- | | | |
|-----------------------------|----------------------------|--------------------------|
| • Terrestrial Biodiversity | • Social Impact Assessment | • Groundwater Assessment |
| • Soils and Land Capability | • Traffic Assessment | |
| • Wetland Assessment | • Heritage Assessment | |

LEGISLATED TIMEFRAMES

Figure 2 provides a schematic outline of the Basic Assessment authorisation and Water Use Licence processes that will be followed.

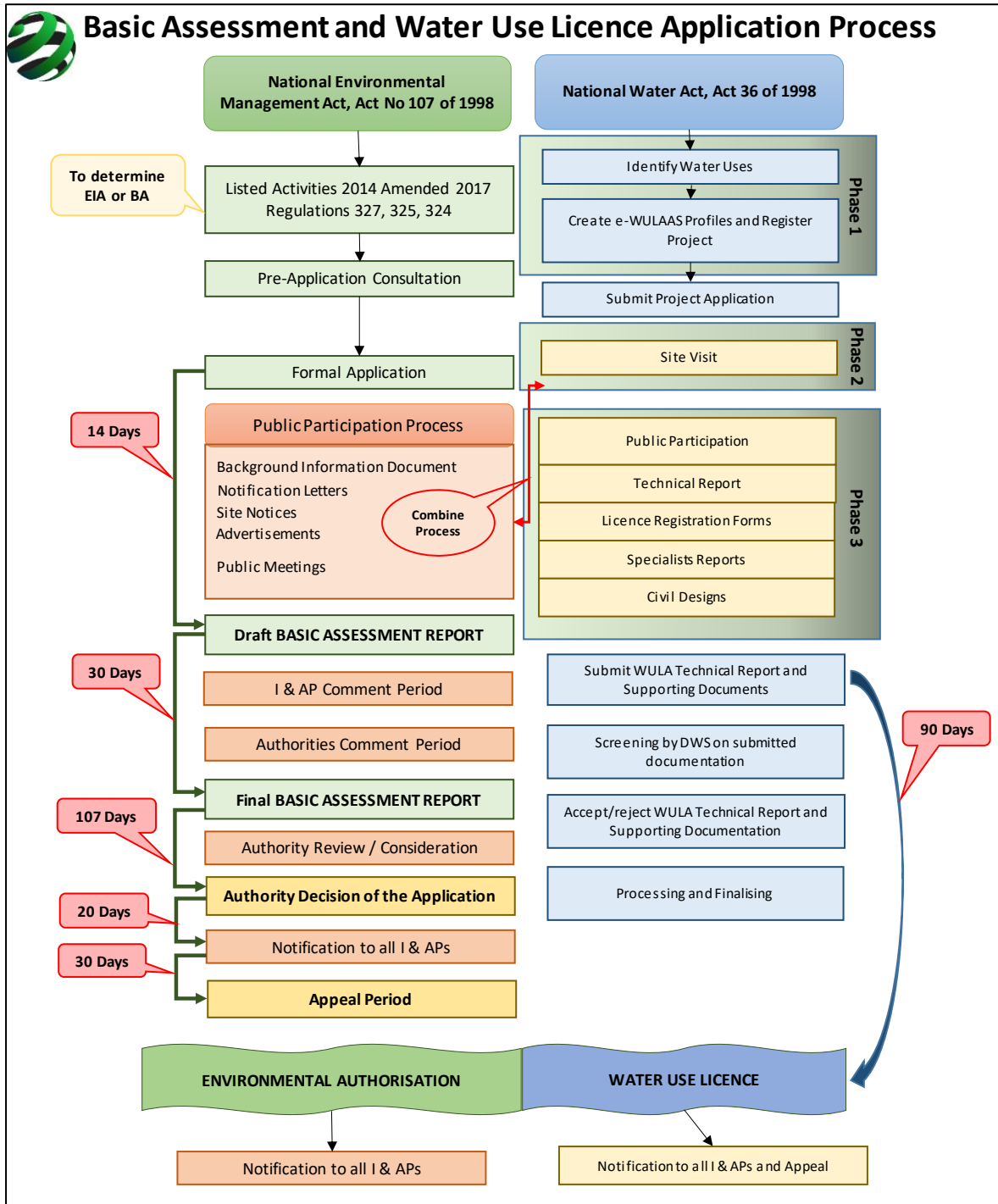


Figure 3: Legislated timeframes for a Basic Assessment environmental authorisation and Water use Licence Application

YOUR COMMENT IS IMPORTANT

Your comments and suggestions on any aspect of the proposed project, including the technical and stakeholder engagement processes, will ultimately assist the authorities in their decision-making process. If you wish to receive further notifications and documentation regarding the proposed Seritarita Secondary School relocation project, kindly complete the attached registration form, and send to Alta van Dyk Environmental Consultants.

**TOKUMENTE YA MELAETŠA YA MOTHEO (TMM)
BOLAODI BJA TIKOLOGO LE KGOPELO YA LAESENSE YA TŠHOMIŠO
YA MEETSE MABAPI LE KHUDUŠO YE E ŠIŠINTŠWEGO LE TLHOMO YA
SEKOLO SA SEKONTARI SA SERITARITA, SA MASEPALA WA
MOGALAKWENA, PROFENSENG YA LIMPOPO**



MATSENO LE MOTHEO

Sekolo sa Sekontari sa Seritarita se hlomilwe Metsaneng ya Skimming le Leruleng, bokgole bjo e ka bago 25km leboabodikela bja toropo ya Mokopane, Profenseng ya Limpopo, tikologong ya Masepala wa Gae wa Mogalakwena. Sekolo se na le barutwana ba ba ka bago 840 le barutiši ba 24. Sekolo se bapile le Anglo American Platinum (AAP) Maene wa Mogalakwena wa Rustenberg Platinum Mine, kgauswi le Mokoti wa ka Borwa. Mokoti wo wa go bulega o ama sekolo ka ge o le kgauswi le merero ya ditirelo, go akaretša lerole le le oketšegilego, lešata la dišišinyego tšeo di hlolago bothata bja maphelo le polokego. Go sepetša dithuto sekolong le go tšwelapela ga moepo di angwa ke tswalano ye ya go se sepetšane.

AAP e lokišetša go huduša badudi ba Skimming le Leruleng, bao le bona ba angwago ke merero ya moepo. Go hudušwa ga setšhaba se go beetšwe 2027/2028. Katološo ye e letetšwego ya Mokoti wa ka Borwa (Cut 11) e tla bea Sekolo sa Sekontari sa Seritarita ka ntle ga tikologo ye e dumeletšwego ya go thuthupiša. AAP e šišinya go huduša le go hloma Sekolo gore se katoge lefelo la go thuthupiša, efela lefelo la khudušo le tla ba ka gare ga Motse wa Skimming le Leruleng. Lefelo la khudušetšo leo le akantšwego la nakwana le bokgole bjo e ka bago dikilomitara tše 2,5 Bodikela go tloga mo sekolo sa bjale se lego gona. Sekolo se tla hudušwa saruri mmogo le khudušo ya Metsana ya Skimming le Leruleng go ya ka depeakanyo tša AAP.

MAIKEMIŠETŠO A TOKUMENTE YE

Tokumente ya Melaetša ya Motheo (TMM) e fa batšeakarolo melaetša mabapi le projeke ye e šišintšwego, ditshepetšo tša bolaodi le ka fao o ka tšeago karolo tshepetšong.

Ba Alta van Dyk Environmental Consultants cc (AVDE) ba thwetšwe bjalo ka Ditsebi tša Kelo ya Tikologo go projeke ye go phetha bolaodi bja tikologo, kgopelo ya laesense ya tšhomišo ya meetse le ditshepetšo tše di amanago le seo tša go tšea karolo ga setšhaba.

O mengwa go ingwadiša bjalo ka Leloko le le Amegago le go ba le Kgahlego mabapi le projeke ye le go swayaswaya goba go laetša dingongorego. Go ngwadišetša projeke ye e šišintšwego le gore o hwetše melaetša ka botlalo, re kgopela gore o tlatše foromo ye e filwego, gomme o e romele go Alta van Dyk Environmental Consultants.

LEFELO LA PROJEKE YE E ŠIŠINTŠWEGO

Lefelo la khudušetšo le le šišintšwego le go hloma lefelo la go šomela mo polaseng ya Zwartfontein 814 LR, leo le laolwago ke Lefapha la Kgodišo ya tša Selegae le Tlhabollo ya Naga ka gare ga tikologo ya selegae ya go laelwa ke Khansele yay a tša Setšo ya Mapela. Lefelo le la go šomela le bogolo bja diheketara tše 28 efela lefelo la diheketara tse 13 le tla šomišwa go hloma sekolo se hudušetšwego. Lefelo le la bošomelo le dutše ka Bohlabela bja Tsela ya Mapela. Lefelo le le wela ka fase ga taolo ya Masepala wa Gae wa Mogalakwena le Masepala wa Selete wa Waterberg. Lebelela Seswantšho 2 sa mmepe wa selegae.

Ditšhupetšo (GPS Co-ordinates) tša lefelo leo le akantšwego la bohudušetšo ke tše: 23°59'11.97"S
28°51'52.19"E

TLHALOŠO YA PROJEKE

Sekolo seo se hudušetšwego se tla aparela tikologo ya go lekana le 13ha. Sekolo se tla agwa go akaretša baithuti le diphapoši tša nakwana tša baithuti le barutiši tšeo di ka agwago le go phušulwa ka bonakwana.

Tsela ya go fihlelela:

Go fihlelela sekolo se se hudušetšwego go tla šomišwa Tsela ya Profense ya Mapela. Tsela ya go fihlelela moo ye mpsha go tšwa go Tsela ya Mapela go ya sekolong se sefsa e tla kgorwa.. E tla ba tsela ya mebila ye mebedi ya go fapana ya botele bja 700m le bopapatla bja 7m.

Tsela yennngwe gape ya go fihlelela sekolo seo se sefša sa go hudušwa go ya Motsaneng wa Skimming e tla kgorwa go tloga lefelong la sekolo.

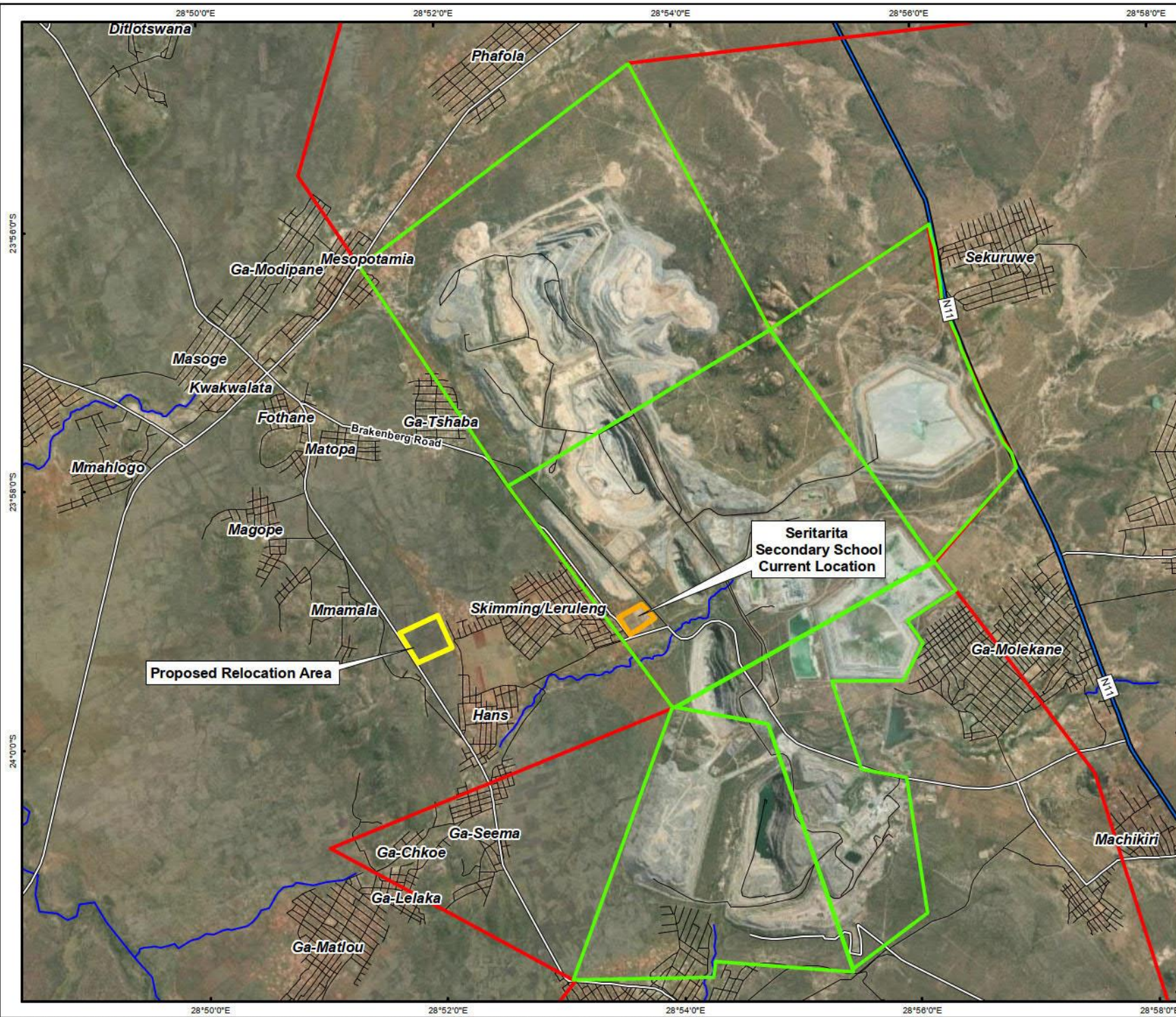
Ditirelo:

Ditirelo tša meago tše di latelago di tla agwa lefelong la sekolo seo se tlogo hudušwa (Lebelela Seswantšho 1 go fa mohlala)

- Poloko ya Bongwadišetšo ye kgolo
- Dipoloko tša diphapoši go akaretšadiphapoši tše 25
- Poloko ya Bokgobapuku le polokelo
- Laporethari ya Khomphutha le Polokelo
- Laporathari ya Saense le Polokelo
- Laporathari ya Paelotši le Polokelo
- Poloko ya phapoši ya mereromentši (dipapoši tse 2)
- Khitšhi/ Poloko ya goba Senthara ya Dijo
- Mafelo a Bošomelo a tša Sethekiniti a Mararo
- Holo ya Sekolo
- Botshwela mare (Bašomi, Bašemane le Basetsana)
- Poloko ya Polokelo ya kakaretšo
- Diphapoši tša bohlobolela tša Dipapadi
- Karolo ya Mohlokamedi wa Sekolo
- Lapatlelo la Kgwele ya Maoto le lefelo la go kitimela
- Dikhoto tša pedi tša go hlakantšwa
- Tikologo ya ka Ntle ya go swarela dikgobokano



Seswantšho 1: Mohlala wo o tlwaelegilego wa diphapoši tša nakwana



Legend

- Seritarita Secondary School
- Proposed Relocation Area
- Mining Rights Area
- Surface Rights Area
- Motorway
- Tertiary Road
- Street/Road
- Track
- Rivers

Study Area

SCALE: 1: 230 000

0 1 2 3

Kilometers

N

TITLE:

Proposed Relocation of Seritarita Secondary School, Mokalakwena Mine, Limpopo Province

CLIENT:

Anglo American Platinum, Rustenburg Platinum Mine, Mokalakwena Mine

DATE: April 2023	PROJECT: MOKGALAKWENA
DRAWN: THURLOW MAPPING	APPROVED: KP
MAP: School_Relocation_Rev1.mxd	REV: 1

Alta van Dyk Environmental Consultants cc (2011/059704/23)

VAT No: 4630259952
Tel: 012 940 9457
Fax: 086 634 3967
Cel: 061 403 2462

Alta van Dyk Environmental

Projection: Transverse Mercator CM: 29 Datum: WGS 84
Source: OSM Vector 2022 -
Mgaa: ESRI World Imagery Layer
Inset: ESRI Data and Maps

SIZE:
A4

Go abelwa mohlagase:

Tšhomišo ya mohlagase ya sekolo ya kamehla e akantšwe go ba 350kWh ka letšatši. Kabo ya mohlagase ye e kopantšhitšwego e tla šomišwa go latela tše:

Go ikgokagantšha le Kriti ya Mohlagase ya Eskom: Mohlagase wa Magato a 3 o tla hwetšwa go Eskom. Metato ya Voltage ya magareng/Voltage ya Fase (MV/LV) e hweditšwe kgauswi (bokgole bja 600m) go tloga lefelong la go šomela leo le šišintšwego. Thapo ya mohlagase ya ka fase e tla hlongwa go tloga sekolong go fihla go transfoma ye ya 100kVA. Go ka se be le dithapo tša mohlagase tšeo di hlokegago.. Tshepetšo ya Enetši ya HVACV e tlašomišwa go butšwetša moya wago hlweka.

Solar Photovoltaic (PV) Maatla a Letšatši: AAP e tla hloma kriti yeo e kgomagantšwego le sefehlamohlagase wa letšatši sa go ba le thekgo ya peteri go fa mohlagase wo mongwe gape go ditirelo tša bohlokwa le meago ka nako y age mohlagase o kgaotšwe.

Motšhene wa go fehla mohlagase: Motšhene wa go fehla mohlagase o tla ba gona.

Kabo ya meetse:

Moithuti mongwe le mongwe o letetšwe go šomiša meetse a go lekana dilitara tše 25-30 ka letšatši, gomme ka letšatši go letetšwe 40 000ℓ (14 600m³ ka ngwaga).

Meetse a go kgewa le ditshwamare a tla hwetšwa mekoting ye e tlogo epša. Sehlwekišameetse se tla ba gona gomme meetse a tla bolokelwa ditankeng tša tšhipi tša go phagamišwa tša bogolo bja 1 x 40m² (40 000ℓ)

Dilori tša go rwala meetse di tla šomišwa bjalo ka thekgo ya kabo ya meetse go tšwa mekoting ya go epša.

Go feta moo, meetse a pula le meetse a go ageletšwa a tla šetšwa.

Tlhwekišo:

Go na lefelo la masepala la go amogela ditšwammeng mo tikologong ya lefelo la projeke. Ka ge lefelo la masepala la go amogela ditšwammeng le se gona tikologong, tanka ya konkriti ya dilahlwa e beakantšwe le tsela go hlwekiša e tla hlongwa. Go akanywa gore ka letšatši motho o tee o tla ntšha kelo ya dilitara tše 37 tsa ditšhila ka letšatši. Tanka ya go bolokela ditšwammeng le sehlwekiša ditšwammeng (lefelo la go hlwekiša meetse a ditšhila) e tla hlongwa go kgoboketša le go hlwekiša ditšwammeng tirelong ya sekolo. Meetse a ditšhila go ageletšwa ao a tlogo hlwekišwa a tla šomišwa go tša temo tikologong tša temo, lebala le lepatlelo la sekolo. Mebono ye mengwe ya go lahla ditšwammeng/go di hlwekiša e lekotšwe, go akaretša tsela ya botshwamare ya go hloka meetse.

DINYAKWA TŠA SEMOLAO

Bolaodi bja go sepetšana le tikologo bjo bo tsomegago mabapi le tšhišinyo ya go huduša Sekolo sa Sekontari sa Seritarita ke bjo:

- Tshepetšo ya Kelo ya Motheo go ya ka Molao wa Taolo ya Tikologo ya Botšhaba (Molao Nomoro 107 wa 1998) le Melawana ya Kelo ya kamano ya Tikologo. Bolaodi bja go ba le bokgoni bja tshepetšo ye ke Lefapha la Limpopo la Kgodišo ya Ikonomi, Tikologo le tša Boeti
- Kgotelo ya Tšhomišo ya Meetse (KTM) go ya ka Molao wa Meetse wa Bosetšhaba (MMB (Molao Nomoro 36 wa 1998) . Bolaodi bja taolo bja bokgoni bja tshepetšo ye ke Lefapha la Meetse le Hlwekišo

Tshepetšo ya go amana le bolaodi bja tikologo di sepela ka nako e tee gomme go nyakega gore batšeakarolo ba be gona. Ka tsela yeo, tshepetšo ye e kgokaganego e tla šetšwa go latela molawana wa maleba. Dinako tše di ngwadišitšwego di laeditšwe go Seswantšho 2.

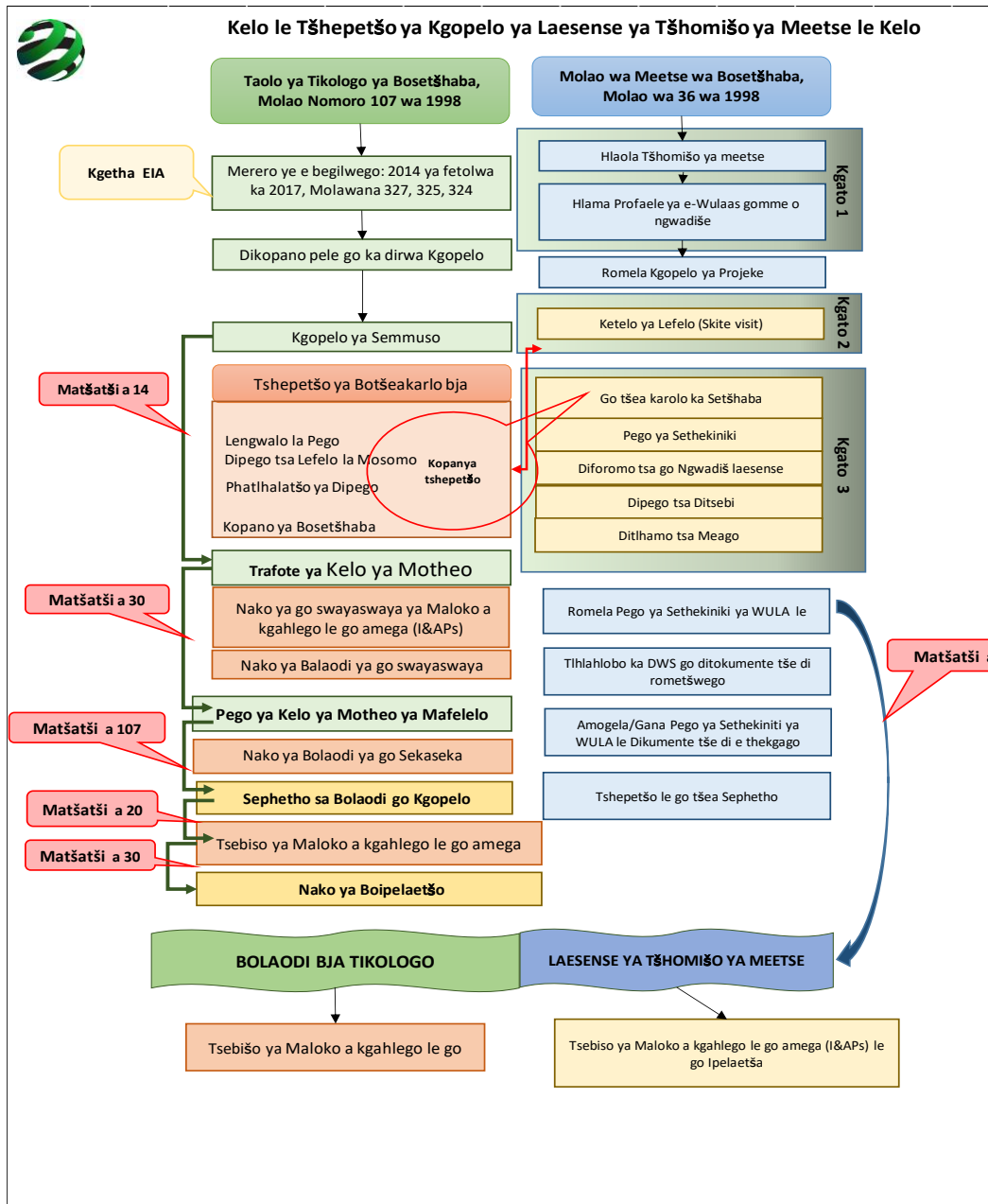
DIPHATOLLO KA DITSEBI

Diphatollo tše di latelago di gare di a phethwa go thekga bolaodi bja tikologo le ditshepetšo tša kgopelo ya laesense ya meetse.

- Bophelo bja diphedi tša nageng
- Phihlelelo ya Mobu le Naga
- Kelo ya mafelo a go Koloba goba Mongola
- Kelo ya Kamo ya Bosetšhaba
- Kelo ya Sephethephetha
- Kelo ya Bohwa
- Kelo ya Meetse a fase

DINAKO TŠEO DI THEILWEGO SEMMUŠO

Seswantšho 2 se laetša bonabo bja Bolaodi bja Kelo ya Motheo le Ditshepetšo ya Laesense ya Tšhomišo ya Meetse



Seswantšho 2: Dinako Tšeo di theilwego semmušo tša Bolaodi bja Tikokologo bja Kelo ya Motheo le Kgopelo ya Laesense ya Tšhomišo ya Meetse

DITSHWAYOTSHWAYO TŠA GAGO DI BOHLOKWA

Ditshwayotshwayo tša gago le mebono go nngwe le nngwe ya tšeo di amago projeke ye e šišintšwego, go akaretšwa le ditshepetšo tša sethikiniti le kamano ya batšeakarolo, di tla thuša balaodi e le ruri tshepetšong ya go tšea sephetho. Ge eba o rata go hwetša tsebišo ye e feletšego le ditokomane mabapi le projeke ya go hudušwa ga Sekolo sa Sekontari sa Seritarita, ka boikokobetšo tlatša foromo ya boingwadišo ye e filwego gomme o romele go Alta va Dyk Environmental Consultants.

