

APPENDIX E6

Proposed Development of a Solar PV Facility and Associated Infrastructure at the Sishen Iron Ore Mine

Pre-Application Meeting Minutes



ANGLO AMERICAN PROJECT GAIA: KUMBA IRON ORE SISHEN SOLAR PV

PROPOSED DEVELOPMENT OF A SOLAR PV FACILITY AND ASSOCIATED INFRASTRUCTURE AT THE SISHEN MINE

NOTES OF THE PRE-APPLICATION MEETING HELD WITH THE DAARDLR (NORTHERN CAPE)

DATE	06 April 2022	
VENUE	MS Teams Virtual Meeting	
PROJECT	Anglo American Project GAIA: Kumba Iron Ore Sishen Solar PV Facility and Associated Infrastructure	
SLR COMPANY	SLR Consulting (South Africa) Pty Ltd. (SLR)	
PROJECT NUMBER	720.01145.00004	
PURPOSE	<p>The purpose of the meeting was:</p> <ul style="list-style-type: none"> • to provide an introduction to the proposed project; • to engage with the Department on the understanding of the environmental legislative framework and associated authorisation requirements; • agree on procedural aspects and the way forward for the environmental authorisation for the project; • to discuss the planned public participation approach; and • to record any comments and issues raised. 	
ATTENDANCE	Name	Organisation
	Nadia Williams (NW)	Kumba Iron Ore – Sishen Mine
	Solofelang Mocumi (SM)	
	Gideon Krynauw (GK)	
	Michael Goodson (MG)	
	Thuso Mathulwe (TM)	Kumba Iron Ore
	Janel Hayes (JH)	Anglo American
	Stuart Heather-Clark (SHC)	SLR
	Marline Medallie (MM)	
	Mavisha Nariansamy (MN)	
Brian Fisher (BF)	Northern Cape Department of Agriculture, Environmental Affairs, Rural Development and Land Reform	
APOLOGIES	Thokozani Hlophe (TH)	Kumba Iron Ore
DISTRIBUTION	All invited participants.	

1. OPEN AND INTRODUCTION

Marline Medallie (MM) from SLR opened the meeting and introduced herself, after which all attendees were provided with an opportunity to introduce themselves. Marline thereafter began the PowerPoint presentation with the various members of the project team presenting specific slides. The presentation is attached as Appendix A.

2. DISCUSSION, QUESTIONS AND CLARIFICATIONS

A number of issues, comments and actions required were raised during the meeting. These have been recorded in the table below. Where a response was provided, the response has been included in the table. Where an action was required, it has been indicated in the table.

3. CLOSE

The meeting was closed by Marline Medallie.

TABLE 1: RECORD OF ISSUES, COMMENTS, RESPONSES AND REQUIRED ACTIONS

NO	ISSUES/ COMMENTS	RESPONSE	ACTION REQUIRED	BY WHOM AND DUE DATE
Achieving Carbon Neutrality				
1.	BF queried whether the Sishen Solar PV Project (the Project) takes into account the carbon emissions released in transporting the infrastructure to site as well as the carbon emissions released during the manufacturing of the relevant solar PV panels, and whether it has been worked into the timelines towards becoming carbon neutral.	Carbon neutrality will be calculated by considering Sishen Mine’s own carbon emissions in so far as electricity generation. There is quite a large amount of electricity and diesel usage on site. The transportation of the panels and manufacturing of the panels will be factored into these calculations. When Sishen Mine looks at becoming carbon neutral, only the offsetting of the current diesel and electricity carbon emissions are being considered. (GK)	Ensure that the carbon cost of the transportation and manufacturing of the solar PV panels have been incorporated in the Climate Change Assessment calculations.	SLR - as part of EA process.
Waste Generation				
2.	BF stated that some of the solar PV panels contain hazardous materials/ waste and queried the plan in terms of managing hazardous wastes.	This project will provide for its own rehabilitation plan for immediate as well as future closure, similar to all other renewable energy projects. This application will also consider how to rehabilitate the area as well as the solar PV panels, as a responsible project would require. (GK)	The BA report must include how the area and solar PV panels will be rehabilitated in the short term and for future closure.	SLR - as part of EA process.
Future Planning				
3.	BF queried whether the green hydrogen project will also be located on the same disturbed land - Waste Rock Dump (WRD).	In terms of the green hydrogen footprint, this project is seen as a first stepping stone in unlocking green hydrogen in future. Although the hydrogen project does not form part of this environmental authorisation, green hydrogen will only be considered following a successful environmental authorisation application process for the Sishen Solar PV Project. This environmental authorisation	None.	None.

NO	ISSUES/ COMMENTS	RESPONSE	ACTION REQUIRED	BY WHOM AND DUE DATE
4.	BF queried whether the green hydrogen plant will form part of the application for Environmental Authorisation for the Project, or whether a separate application process will be followed.	application is therefore only for the Sishen Solar PV Project (situated on top of the G 80 WRD). The green hydrogen development will be a standalone development, will be separately housed and will not be located on the G 80 WRD. This development is still in its infancy and is in its development phase and will not reach the Environmental Authorisation application phase soon. (GK)		
5.	BF mentioned that biodiversity offsets will have to be considered for certain projects as developments expand, and that a biodiversity offset might be a requirement for the approval of green hydrogen projects.	Noted.		
6.	BF queried whether the Project will be connected to the electricity grid at any stage, because if it will discussions will be required with the National Department of Forestry, Fisheries and the Environment regarding the competent authority.	The facility will be connected to Sishen Mine's own grid system running within the mine, connecting through the Pit Substation 2. This project will not connect directly to the Eskom network. However, Sishen Mine is still connected to the Eskom network through the Ferrum substation. So, by its definition of an electric network, towards the end of this project you will have an indirect Eskom connection. Eskom has been engaged with and are aware of this, however this application does not seek a direct connection with Eskom. (GK)	Ensure ongoing engagements with Eskom to make them aware of the Project.	SLR - as part of EA process.
7.	BF queried Kumba's intention to mitigate the heat island as a result of the large Project area, number of solar PV panels and increase in temperature.	The height of the WRD is ~ 110m and a prevailing breeze travel across the dump at a similar height. Kumba does not believe the Project will create a heat island but will investigate this and provide feedback. (GK)	None	None

Air Quality


NO	ISSUES/ COMMENTS	RESPONSE	ACTION REQUIRED	BY WHOM AND DUE DATE
8.	BF queried why Sishen Mine is only monitoring PM ₁₀ and not PM _{2.5} as part of their Air Quality Monitoring Programme.	Sishen Mine does monitor PM ₁₀ , PM _{2.5} , Ozone, NO _x , SO _x at the Sesheng monitoring station close to the G 80 WRD. (NW)	Ensure the baseline section of the BAR includes all parameters monitored as part of the Air Quality Monitoring Programme.	SLR - as part of EA process.
9.	BF queried the method/ process that will be used to ensure that the solar PV panels are dust free for optimal efficiency. He also asked if water will be used to clean the panels and if the water will be recycled.	Given the height of the WRD and that the prevailing wind direction is towards the WRD, this should not be an issue. However, to ensure efficiency of the solar PV panels it will be cleaned with scrubbed and purified water supplied by the Sishen mining operations. (GK)	Details of the water requirements for cleaning the panels will be included in the BAR.	None.
10.	BF queried the measures that will be in place to reduce dust-fallout due to the movement of trucks during the construction phase of the Project.	Separate access points exist onto the WRD. The Project will not make use of Sishen Mine's entrance, but rather one of the other tarred access points onto the WRD. The physical activities e.g., to install the solar PV panels will only be undertaken during the construction phase of the Project. The prevailing wind direction is towards Sishen Mine, therefore dust-fallout from the Project area will be visible at the mine. However, similar to other operations dust control measures will be put in place to make sure there is no excessive dust being generated during the construction phase. (GK)	Ensure that adequate mitigation for dust-fallout is included in the BAR.	SLR - as part of EA process.
Geotechnical Stability and Rehabilitation				
11.	BF queried whether there is an indication that the WRD is stable to build the Solar PV Facility.	The geotechnical stability of the WRD has been considered by Geotechnical Specialists who undertook intrusive drilling to ensure that the broad area is stable. No fatal flaws or risks of collapse or deformation have been identified to take place. It should also be noted that solar PV panels are not heavy structures, and the loading will be minimal. The transformer and transformer lines will be placed on the competent edges (multiple rock layers) on the WRD. From a dump stability perspective, the WRD is sound and does not pose a problem.	Ensure that the results of Geotechnical specialist investigations are included in the BAR.	SLR - as part of EA process.

NO	ISSUES/ COMMENTS	RESPONSE	ACTION REQUIRED	BY WHOM AND DUE DATE
		Remember this will also be funded by external parties through the SPV, no one will risk their money on a platform which is not stable. (GK)		
12.	BF queried whether the slopes of the partial rehabilitated WRD will be revegetated by Sishen Mine as part of their continuous rehabilitation.	<p>The areas of the WRD already rehabilitated by Sishen Mine will be targeted first. Rehabilitation comprises the following:</p> <ol style="list-style-type: none"> 1. Covering the dump with a 0.5m thick layer of competent material e.g., calcrete on top of the clay layer of the WRD. 2. On top of the competent layer, another thin layer of either topsoil or a type of gravel. 3. Seeding of the entire area or topsoiled, for very light vegetation as it is on top of the WRD. <p>Based on the level of disturbance and future economic value of the Project area, the rehabilitation process will be similar to that of Sishen Mine except for seeding that will only take place after the life of the Solar PV Facility. Therefore, Sishen Mine's rehabilitation is being mimicked and there's no risk of stability or risk to the mine itself. Disturbed mining areas are therefore revitalised into productive land and other green field sites are not disturbed. (GK)</p>	A description of the rehabilitation techniques for the Project will be provided in the BAR.	SLR - as part of EA process.
Socio-economic				
13.	BF asked whether the applicant has plans in place to train local people upfront to stop an influx of people from Johannesburg, Cape Town or Bloemfontein seeking job opportunities.	Local persons will be employed as far as reasonably possible. The vast experience with solar PV projects within the Northern Cape, given the abundance of solar irradiation and sunlight will also be tapped into. Especially the skills set in the construction of solar PV facilities. In the long-term during the operation and maintenance phases permanent staff will be employed.	Details of employment opportunities arising from the development of the Project will be included in the BAR.	SLR - as part of EA process.

NO	ISSUES/ COMMENTS	RESPONSE	ACTION REQUIRED	BY WHOM AND DUE DATE
14.	BF queried how the community will benefit from this development and whether an eco-centre for schools is being considered to see how solar PV plants operate together with the purpose of rehabilitation and how it looks. This would also assist in convincing learners from the Northern Cape to study in the environmental or engineering fields, as the province are struggling to attract these types of graduates and are forced to employ from other provinces.	<p>This is an excellent idea and opportunity to present and train people on the beneficial and productive form of rehabilitation provided by the Project, as it brings rehabilitation and new energy elements together. Local community participation will be considered (e.g., will a training centre be provided, how to make it visible or show case to local schools). Kumba as an organisation has a very good working relationship with the SIOC Community Trust when look at community participation for which existing structure exist.</p> <p>There is always an opportunity for broader participation at an equity level, which is something that is being solved at the Anglo American group level with regards to the renewable energy ecosystem perspective. (GK)</p>	None.	None.
Application Procedure				
15.	MM requested whether there are any other requirements or preferences by the Department for inclusion in the public participation process.	<p>The area has traditional tribal authorities, have they been included in the public participation process? (BF)</p> <p>Have the district and local municipalities been included as well? (BF)</p>	<p>Ensure the public participation process includes all traditional tribal authorities.</p> <p>Ensure the public participation process includes district and local municipalities.</p>	SLR - as part of EA process.
16.	MM requested the contact details of the correct person at the Department to provide the latest template of the application form and Basic Assessment Report (BAR).	Yes. (BF)	BF to provide contact details for authority to provide the latest application form and BAR templates.	BF - 11 April 2022 (see Appendix B for templates provided by the Department).
17.	<p>MM requested the Department's preference for submission of the application form and BAR:</p> <ul style="list-style-type: none"> • Application form to be submitted first, followed by the BAR; or 	Application form to be submitted first, followed by the BAR. (BF)	Ensure submission of application form first, followed by the Basic Assessment Report.	SLR - as part of EA process.

NO	ISSUES/ COMMENTS	RESPONSE	ACTION REQUIRED	BY WHOM AND DUE DATE
	Submission of both the application form and BAR at the same time.			

Appendix A: Meeting Presentation




**KUMBA IRON ORE: SISHEN MINE
SOLAR PV POWER GENERATION FACILITY AND ASSOCIATED
INFRASTRUCTURE**

PRELIMINARY APPLICATION MEETING

NORTHERN CAPE
DEPARTMENT OF AGRICULTURE, ENVIRONMENTAL AFFAIRS,
RURAL DEVELOPMENT AND LAND REFORM


06 APRIL 2022

global environmental and advisory solutions



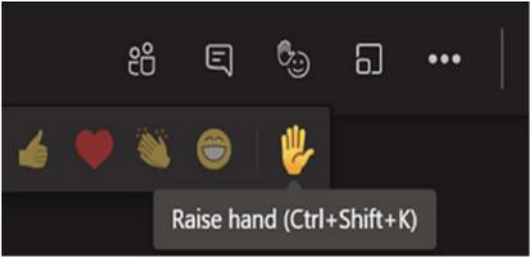

1

1




Meeting Protocol

- There will be a dedicated question and answer session at the end of the presentation. However, please feel free to use the “raise hand” icon should there be any points of clarity required during the presentation.
- Kindly note that this session will be recorded with your permission.

global environmental and advisory solutions



2

2



Agenda

- Welcome and opening - SLR
- Applicant and consultant details - SLR
- Meeting objectives - SLR
- Anglo American Sustainable Mining Plan and Renewable Energy Strategy – Kumba Iron Ore
- Background of engagement with DMRE – Kumba Iron Ore
- Introduction to the Project - Kumba Iron Ore
- Overview of the existing status of the environment - SLR
- Potential environmental/socio-economic impacts and specialist input - SLR
- Environmental process overview - SLR
- Proposed public participation process - SLR
- Questions and answers - All
- Close - SLR

global environmental and advisory solutions



3

3



Welcome and Opening

SLR Consulting (South Africa) (Pty) Ltd (SLR) – an independent firm of environmental consultants.

- Marline Medallie - Project Manager;
- Mavisha Nariansamy - Assistant Project Manager; and
- Stuart-Heather Clark - Project Director.

Kumba Iron Ore (Kumba), an Anglo American company - project applicant and technical project team representatives:

- Dave Payne, Gideon Krynauw, Michael Goodson – Project Manager/ Facilitator
- Solofelang Mocumi – Specialist Mineral Rights and Permitting; and
- Nadia Williams - Section Manager: Environment (Sishen Mine).

Anglo American - project applicant and technical project team representatives:

- Janel Hayes – Group Permitting Principal.

global environmental and advisory solutions



4

4



Applicant and Consultant Details

Kumba Sishen Mine: Thokozani Hlophe

Kumba Iron Ore

Email: thokozani.hlophe@angloamerican.com

Environmental Assessment Practitioner: Marline Medallie

SLR Consulting (South Africa) (Pty) Ltd

(Tel) (011) 467 0945

Email: mmedallie@slrconsulting.com

global environmental and advisory solutions



5

5



Meeting Objectives

- To provide the context of the Sishen Solar PV Project within the Anglo American Sustainable Mining Plan and Renewable Energy Strategy.
- To introduce the Sishen Mine Solar PV Project to the Northern Cape Department of Agriculture, Environmental Affairs, Rural Development and Land Reform (DAEARDLR).
- To provide an overview of the existing status of the environment.
- To provide an overview of the potential environmental impacts and specialist input.
- To provide an overview of the environmental authorisation process.
- To provide an overview of the proposed public participation process and to obtain input from the Competent Authority.
- To address and or clarify specific queries.

global environmental and advisory solutions



6

6

Anglo American Sustainable Mining Plan and Renewable Energy Strategy



Anglo American / © 2021



global environmental and advisory solutions



7

7

Anglo American Sustainable Mining Plan and Renewable Energy Strategy - Stakeholder benefits

Government

- AA energy investments:
 - Supports the IRP renewable energy objectives; and
 - Green H2 production, and broader electrification, opens up corridors for new technology economy (incl. steel production).
- Enhances mining's competitiveness globally and opens up new markets.
- Energy availability supports economic growth.

Eskom

- Increased system capacity.
- Supports grid stability
- Improves grid decarbonisation.

global environmental and advisory solutions



8

8



Anglo American Sustainable Mining Plan and Renewable Energy Strategy - Stakeholder benefits

Social

- The Project is not part of the REIPPPP – does not benefit from REIPPPP protections and state guarantees – it is a private project which will align with the Anglo Social Way for social benefits and community involvement.
- Job creation is the most immediate local benefit.
 - The immediate benefit are construction jobs – short-term, high-volume work with equitable conditions.
 - Longer term operational and maintenance jobs will benefit local persons through upskilling into higher value positions.
 - The Project will be staffed according to Anglo American Social Way - preference for local persons and empowerment.
- The project will implement preferential procurement as a key aspect of the Anglo American Social Way for the mine and the community.
- There is potential for local community ownership participation.

global environmental and advisory solutions



9

9



DFFE as the Competent Authority

Creating a new renewable energy power generation eco-system

- To obtain a 24/7 carbon-neutral electricity supply across our operations Anglo American will need to develop multiple (19) renewable (solar and wind) generation projects to create a Regional Renewable Energy System (RREE) that optimises the provision of RE.
- The Sishen Solar PV development is one of such Anglo American renewable projects.
- A new SPV (special purpose vehicle) will be created, in the form of a SA Clean Energy Company, which will develop, operate and maintain the projects within the RREE.
- Given the nature of this project within the RREE and distinct listed activities of RE generation, the Sishen Solar PV project is seen as ring-fenced and separate from the Sishen mining activities. It is further not part of a mining rights application.
- To align with the project execution timeline, Kumba will be the applicant for the Environmental Authorisation (EA) and at a later stage transfer the EA to the new SPV through a NEMA part 1 amendment process.
- During a meeting held on 8 March 2022 between the Northern Cape DMRE leadership and Anglo American, the DMRE guided that Solar PV power generation is considered a non-mining activity and recommended a parallel approach to permitting with the:
 - Northern Cape Department of Agriculture, Environmental Affairs, Rural Development and Land Reform the CA for the Environmental Authorisation of NEMA; and
 - DMRE the CA for permits which may include applications in terms of section 53, 79 and 102 of the MPRDA

global environmental and advisory solutions



10

10



Introduction to the Project - Site Selection

- The locality of the proposed Project area is dependent that the solar PV power generation facility being within close proximity of the Sishen Mine.
- In addition, a site alternative assessment was undertaken to determine the level of impact the Project would have on the receiving environment
- The preferred location for the solar PV power generation facility was chosen as a previously disturbed area within Sishen’s existing mining right area – the G 80 Waste Rock Dump (WRD).
- The G 80 WRD is partially rehabilitated with concurrent rehabilitation being undertaken by Kumba in a phased approach.
- Benefits of the preferred location include the following:
 - Locating the Solar PV on existing infrastructure.
 - Revitalising disturbed mining areas into productive land, and not disturbing other greenfield sites.
 - Moving away from traditional rehabilitation to more productive use of the land after mine closure.
 - Embedding the power generation on the mining site for mining use, without burdening the congested local grid network.

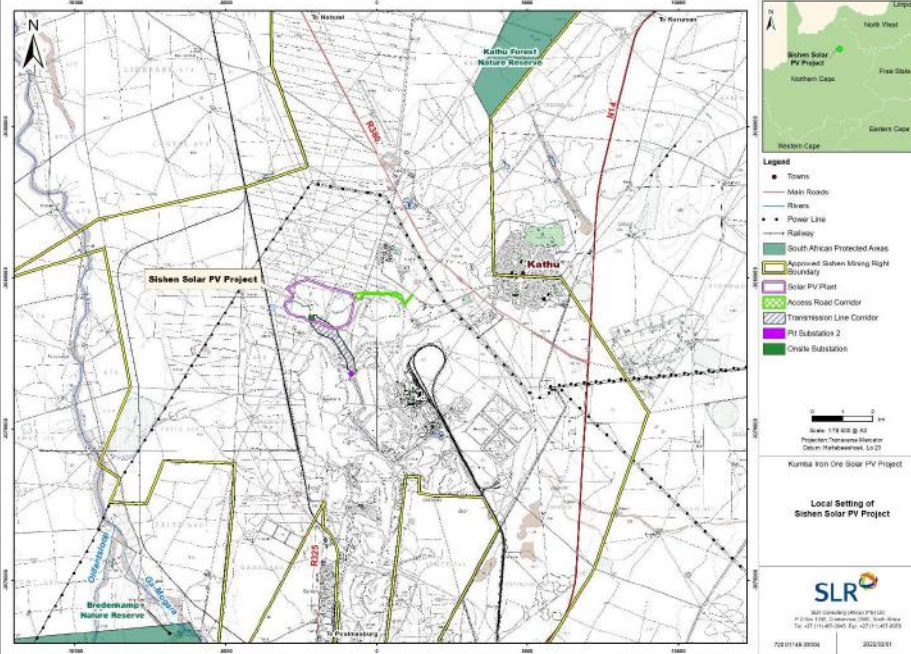


global environmental and advisory solutions



11

11

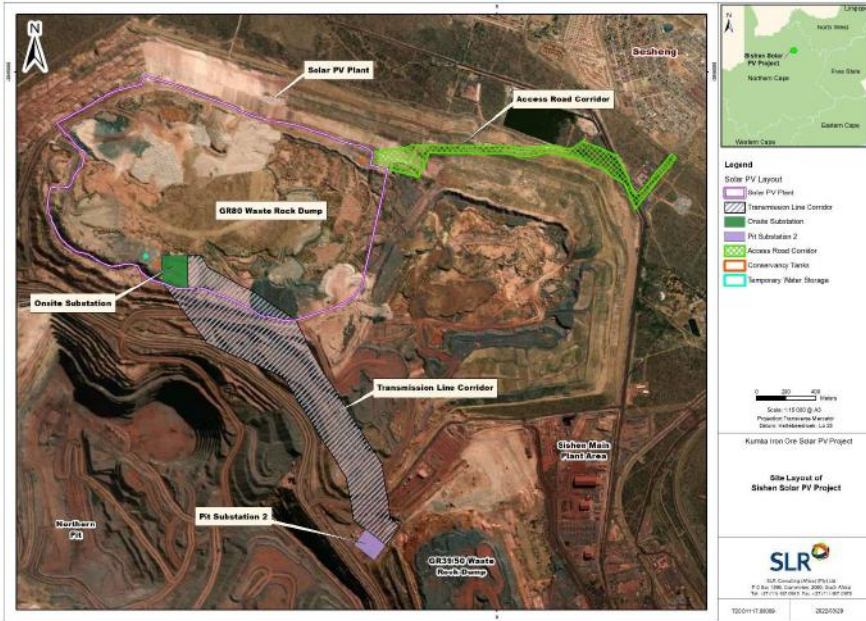


global environmental and advisory solutions



12

12



global environmental and advisory solutions



13

13



Introduction to the Project - Technical parameters

COMPONENT	DETAIL
Generation capacity	150 megawatt (MW)
Area of PV plant (incl buildings and equipment only)	248.7 ha
Number of panels	≤ 300 000
Technology	Tracking or fixed-tilt
Final height of PV panels (from ground level)	≤ 8m
Substation	3.7 ha
Inverter stations located within the area of the PV array	Number of inverters ≤ 1500 Height of inverters ≤ 5m

global environmental and advisory solutions



14

14

Introduction to the Project - Technical parameters

COMPONENT	DETAIL
Transformer	Capacity - ≤ 85 MVA Height - ≤ 6 m (may be multiple transformers)
Transmission line corridor	Area - 69.6 ha Width - 250 m Length - ≤ 3 km
Transmission line technical parameters	Width of servitude - ≤ 50m Area of on-site substation Size: 3.7 ha Capacity: up to 190 MVA Max line voltage of 132 kV Internal (within the development area) - underground cables or overhead lines External (outside the development area) - up to 4 powerlines or underground cables
Associated Infrastructure	Access roads, internal roads, O&M buildings, waste storage (hazardous and general), water conservancy tanks, lay down areas, stormwater management infrastructure.

Overview of the Existing Status of the Environment

Climate

- Semi-arid hot climate.
- Mean annual precipitation of 349 mm in the summer months (December to March).
- Driest months June – August.

Geology

- Located within the Griqualand West Basin which is a Superior-type Banded Iron Formation (BIF) of the Transvaal Supergroup lithologies.

Overview of the Existing Status of the Environment

Topography

- The mining right area is a relatively flat, with undulating plains.
- Elevation reaches 1 350 mamsl in the form of several hills towards the southeast of the mining area.
- Prominent local landforms comprise of existing waste rock dumps (WRDs) reaching a height of 110 m.

Overview of the Existing Status of the Environment

Soils and Land Capability

- Shallow soil forms typical on rocky ridges and sandy freely drained soils on gentle to flat mid slopes.
- Agricultural capability low – suitable for light grazing.
- Project area not suitable for crop cultivation – limited carrying capacity.

Overview of the Existing Status of the Environment

Biodiversity

- Sishen Mine lies within the predominant vegetation type of the Kathu Bushveld, there are isolated patches of the Southern Kalahari Salt Pans. The vegetation of these pans is subject to natural degradation or regeneration cycles controlled by the concentration of grazing animals.
- Vegetation is characterized by low grassland and a mixture of dwarf shrubs.

Overview of the Existing Status of the Environment

Surface water

- Project area is situated within the quaternary catchment D41J and the Lower Vaal Water Management Area.
- There are no perennial rivers in the area.
- The catchment system is endoreic with the Gamagara drainage flowing into the Kuruman River which then flows into the Molopo River.

Overview of the Existing Status of the Environment

Groundwater

- Sishen Mine is underlain by a calcrete and clay layer with a combined thickness of ≥ 30 m.
- The hydrogeology of the area is complex due to geological influences on permeable formations (such as BIFs and dolomites that are intruded by dykes).
- Two major aquifer systems have been identified in the region. Deeper secondary aquifers are present in the dolomite and BIF. Shallow aquifers are developed within the Kalahari sediments within the calcrete beds.

Overview of the Existing Status of the Environment

Air Quality

- Ambient monitoring (PM10) and dust fallout (deposition) monitoring has been undertaken since 2002 at Sishen Mine.
- Sources of particulate emissions in the region includes unpaved roads, construction activities and large unvegetated areas exposed to wind erosion.
- Key sensitive receptors include the Dingleton community, the Sesheng, and the Kathu community located within proximity of the Project area.

Overview of the Existing Status of the Environment

Noise

- The noise impact of the Sishen mining operations in most of the areas to the north, east and south of the mine is still relatively low.

Visual

- The project area's scenic appeal is low.
- The semi-arid flat, open nature of the landscape renders it particularly sensitive to visual intrusion and views in the area are dominated by the mine WRDs that are visible from great distances.

Overview of the Existing Status of the Environment

Traffic

- The N14 National Road, east of the Sishen Mine carries a significant amount of traffic - the road traverse the Gamagara Mining Corridor area, linking it with Upington and ultimately Gauteng.
- The R380 carries reasonably significant volumes of traffic during the day for access to Kathu and the Sishen Mine.
- The R380 provides primary access to Dibeng in the north-west and links to the Mamatwan Manganese Mine north and to Hotazel further to the north.

Overview of the Existing Status of the Environment

Land Use

- Land use near the proposed site is characterised by surface-based mining (mainly from Sishen mining operations), some agricultural activities represented by privately-owned farms (mainly used for grazing) and settlements.

Overview of the Existing Status of the Environment

Heritage, Cultural and Paleontological Resources

- A few Middle Stone Age artefacts, generally made from fine grained specularite and jaspilite, were recorded at three locations around small water pans in the local area.
- Larger amounts of Earlier and Middle Stone Age artefacts including hand axes, cores and flakes were noted in one area near a manmade dam and borehole.

Overview of the Existing Status of the Environment

Socio-economic

- The region is dependent on the mining industry for its growth and employment opportunities.
- The Sishen Iron Ore Mine is the main economic driver of the local municipality and the main employer and is a source of livelihood for most of the population.
- There are low levels of education noted among young people within the Local Municipality.

Potential Impacts and Specialist Input

ASPECT	POTENTIAL ENVIRONMENTAL/CULTURAL/ SOCIO-ECONOMIC IMPACTS	SPECIALIST INPUT
Climate	Reduction in greenhouse gas emissions.	Climate Change Assessment
Avifauna	Increased avifaunal mortalities.	Avifaunal Assessment
Visual	Negative visual views.	Visual Impact Assessment
Civil aviation	Glint and glare – potential flight path interference.	Civil Aviation Assessment
Aquatic Biodiversity	Negligible impact due to preferred location expected, but due to the results of the sensitivity analysis (assessed as high impact due to the WRD located within a sensitive aquatic catchment downstream of site).	Aquatic Biodiversity Assessment

Potential Impacts and Specialist Input

ASPECT	POTENTIAL ENVIRONMENTAL/CULTURAL/ SOCIO-ECONOMIC IMPACTS	SPECIALIST INPUT
Heritage and cultural resources	Negligible impact due to preferred location but desktop assessment required.	Heritage and Palaeontology Compliance Statement
Socio-economic environment	Positive contribution to socio-economic landscape (creation of jobs, local upskilling and training)	Social Impact Assessment

Environmental Authorisation Process Overview

LEGISLATION	RELEVANCE	KEY PROCESS ELEMENTS	COMPETENT AUTHORITY
National Environmental Management Act, 1998 (NEMA, No. 107 of 1998) as amended and NEMA EIA Regulations ((GNR 983, 984 and 985 (2014, as amended))	NEMA (GNR 983 of 2014) – Listing Notice 1, Activities: <ul style="list-style-type: none"> • 11 (power lines and substations) • 12 & 19 (watercourse disturbance) • 14 (dangerous goods storage) • 21 D (Section 102 amendment) • 24 & 56 (roads) • 28 (land use change) • 27 (clearing of land); • 34 (WUL amendment); and • 67 (phased activities). 	<ul style="list-style-type: none"> • Environmental authorisation (NEMA) application • Basic Assessment Report (BAR) and EMPr • Stakeholder engagement process and specialist input 	DAEARDLR



Environmental Authorisation Process Overview

LEGISLATION	RELEVANCE	KEY PROCESS ELEMENTS	COMPETENT AUTHORITY
Mineral and Petroleum Resources Development Act, 2002 (MPRDA, No. 28 of 2002), as amended	EMPr Amendment Application	<ul style="list-style-type: none"> Section 102 application (MPRDA) BAR and EMPr Stakeholder engagement process and specialist input 	DMRE Kimberley
NWA (Act 36 of 1998, as amended) and the Regulations Regarding the Procedural Requirements for Water Use Licence Applications (WULA's) (GNR 267 of 2017).	Section 21 Water Uses: <ul style="list-style-type: none"> (b) water storage (c) water flow (g) waste disposal; and (i) watercourse alteration. 	<ul style="list-style-type: none"> IWUL Amendment application through a general authorisation Stakeholder engagement process and specialist input 	Department of Water and Sanitation (DWS)

global environmental and advisory solutions

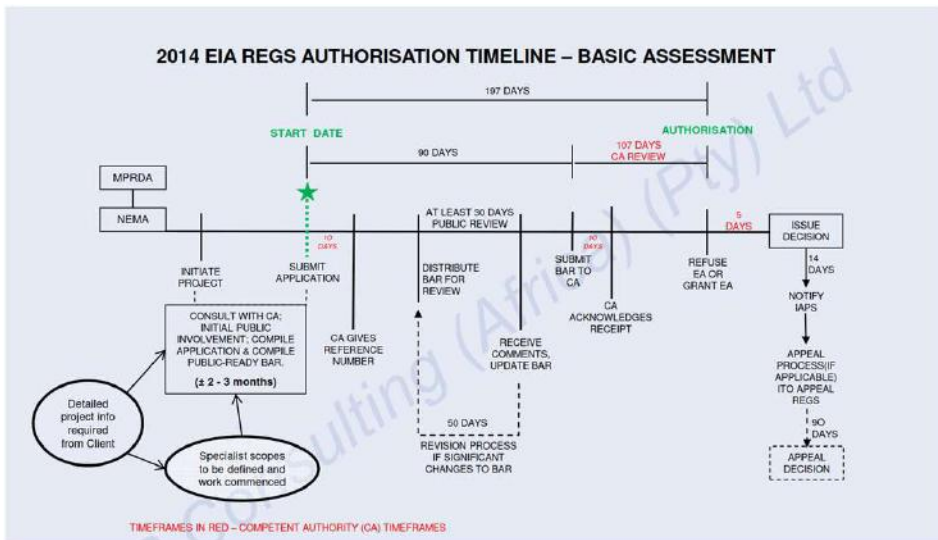


31

31



Environmental Authorisation Process Overview



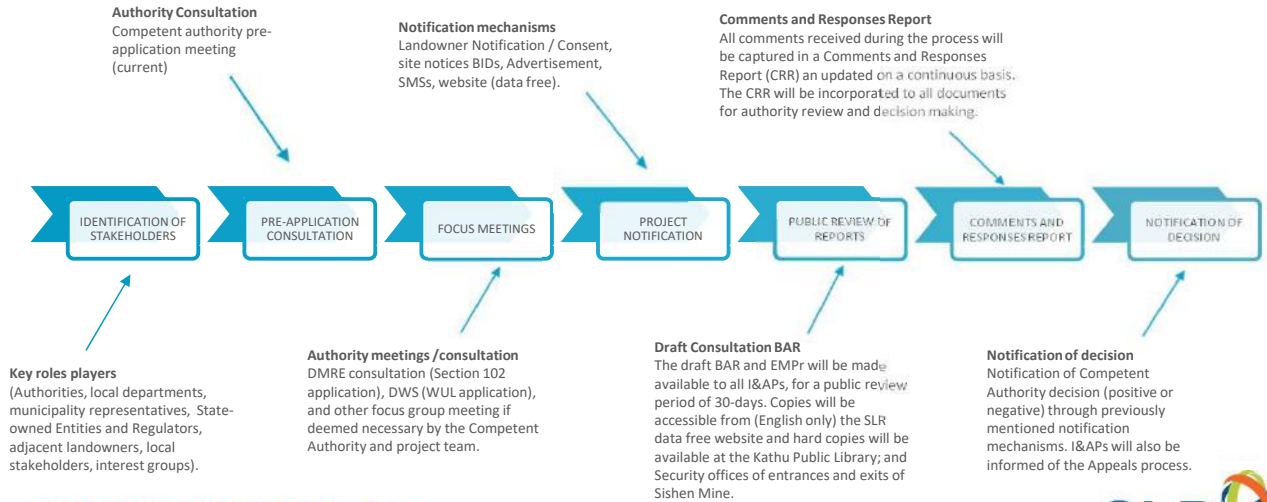
global environmental and advisory solutions



32

32

Proposed Public Participation Process



Questions and Answers

- Please provide instruction if there are newer templates available for the Application Form and Basic Assessment Report.
- Please provide guidance or input on the sufficiency of the proposed PPP outlined herein.
- Other.





THANK YOU AND CLOSE

global **environmental** and **advisory** solutions

35



Appendix B: Application Templates Received from the Competent Authority



the denc

Department:
Environment & Nature Conservation
NORTHERN CAPE PROVINCE
REPUBLIC OF SOUTH AFRICA

Private Bag X6102, Kimberley, 8300, Metlife Towers, T-Floor, Tel: 053 807 7300, Fax: 053 807 7328

APPLICATION FORM FOR ENVIRONMENTAL AUTHORISATION

	(For official use only)
File Reference Number:	
NEAS Reference Number:	
Date Received:	
Receipt Number:	

Application for authorisation in terms of the National Environmental Management Act, 1998 (Act No. 107 of 1998), (the Act) and the Environmental Impact Assessment Regulations, 2014 (the Regulations)

PROJECT TITLE

--

Kindly note that:

1. This application form is current as of 07 April 2017 as amended. It is the responsibility of the applicant to ascertain whether subsequent versions of the form have been published or produced by the competent authority.
2. The application must be typed within the spaces provided in the form. The sizes of the spaces provided are not necessarily indicative of the amount of information to be provided. Spaces are provided in tabular format and will extend automatically when each space is filled with typing.
3. Where applicable **black out** the boxes that are not applicable in the form.
4. The application must be completed in terms of Regulation 16 of GN R.326
5. The use of the phrase "not applicable" in the form must be done with circumspection. Should it be done in respect of material information required by the competent authority for assessing the application, it may result in the rejection of the application as provided for in the Regulations.
6. This application must be handed in at the offices of the relevant competent authority as determined by the Act and Regulations.
7. No faxed or e-mailed applications will be accepted. Only original signed copies will be accepted.
8. Unless protected by law, all information filled in on this application form will become public information on receipt by the competent authority. Any interested and affected party should and shall be provided with the information contained in this application on request, during any stage of the application process.

9. Should a specialist report or report on a specialised process be submitted at any stage for any part of this application, the terms of reference for such report and declaration of interest of the specialist must also be submitted.
10. Proof of payment must accompany this application. The application will not be processed without proof of payment unless one of the exclusions provided for the Fee Regulations (Fees for consideration and processing of applications for environmental authorisations and amendments thereto Government Notice.141, published on 28 February 2014 is applicable and such information in section 1 of this application form has been confirmed by this Department.

Queries must be addressed to the contact hereunder:

Departmental Details

Postal address:

Department of Environment and Nature Conservation
Attention: Directorate: Environmental Quality Management
Private Bag X6102
KIMBERLEY
8300

Physical address:

Department of Environment and Nature Conservation
90 Long Street, Sasko Building
KIMBERLEY
8300

Queries should be directed to the Sub - Directorate: Impact Management:

Tel: (053) 807-7430
Fax: (053) 831-3530

View the Department's website at <http://denc.ncape.gov.za/> for the latest version of the documents.

1. PROOF OF PAYMENT

Applicants are required to tick the appropriate box below to indicate that either proof of payment is attached or that, in the applicant's view, an exclusion applies. Proof and a motivation for exclusions must be attached to this application form in **Appendix 1**.

Proof of payment attached as **Appendix 1**

Exclusion applies

An applicant is excluded from paying fees if:

The activity is a community based project funded by a government grant; or
The applicant is an organ of state.

TYPE OF EXCLUSION	Tick where applicable. Proper motivation must be attached to the application
The activity is a community based project funded by a government grant	
The applicant is an organ of state	

FEE AMOUNT	Fee
Application for an environmental authorisation for which basic assessment is required in terms of the Environmental Impact Assessment Regulations	R2 000
Application for an environmental authorisation, for which S&EIR is required in terms of the Environmental Impact Assessment Regulations	R10 000

Department of Environment & Nature Conservation' details for the payment of application fees:

Payment Enquiries:	
Ms. T Leburu	
Tel.: (053) 807 7464/2	
Email: tmakaudi@ncpg.gov.za	
Cc: gletimela@ncpg.gov.za	
BANKING DETAILS:	
ACCOUNT NAME	: NORTHERN CAPE PROVINCIAL PAYMASTER GENERAL ENVIRONMENT & NATURE CONSERVATION
BANK	: STANDARD BANK SOUTH AFRICA
ACCOUNT NUMBER	: 240013751
BRANCH CODE	: 050002
REFERENCE TO BE USED BY APPLICANT	: EIA/25/19



2. PROJECT DESCRIPTION

Please provide a **detailed** description of the project.

--

Does the project form part of any of the Strategic Infrastructure Projects (SIPs) as described in the National Development Plan, 2011?	YES	NO
--	-----	----

If YES, please indicate which SIPs are applicable in **Appendix 1**.

Please indicate which sector the project falls under by crossing out the relevant block in the table below:

Table 1

Green economy + “Green” and energy-saving industries	Greenfield transformation to urban or industrial form (including mining)	
Infrastructure – electricity (generation, transmission & distribution)	Biodiversity or sensitive area related activities	
Oil and gas	Mining value chain	
Biofuels	Potential of metal fabrication capital & transport equipment – arising from large public investments	
Nuclear	Boat building	
Basic services (local government) – electricity and electrification	Manufacturing – automotive products and components, and medium and heavy commercial vehicles	
Basic services (local government) – area lighting	Manufacturing – plastics, pharmaceuticals and chemicals	
Infrastructure – transport (ports, rail and road)	Manufacturing – clothing textiles, footwear and leather	
Basic services (local government access roads)	Forestry, paper, pulp and furniture	
Basic services (local government) – public transport	Business process servicing	
Infrastructure – water (bulk and reticulation)	Advanced materials	
Basic services (local government) – sanitation	Aerospace	
Basic services (local government) – waste management	Basic services (local government) - education	
Basic services (local government) water	Basic services (local government) - health	
Agricultural value chain + agro-processing (linked to food security and food pricing imperatives)	Basic services (local government) - housing	
Infrastructure – information and communication technology	Basic services (local government) security of tenure	

Tourism + strengthening linkages between cultural industries and tourism		Other	
Basic services (local government) – public open spaces and recreational facilities			

Provide details on the anticipated socio-economic values associated with the proposed project

Table 1

Anticipated CAPEX value of the project on completion	
What is the expected annual income to be generated by or as a result of the project?	
New skilled employment opportunities created in the construction phase of the project	
New skilled employment opportunities created in the operational phase of the project	
New un-skilled employment opportunities created in the construction phase of the project	
New un-skilled employment opportunities created in the operational phase of the project	
What is the expected value of the employment opportunities during the operational and construction phase?	
What percentage of this value that will accrue to previously disadvantaged individuals?	
What percentage of this value that will accrue to previously disadvantaged individuals?	
The expected current value of the employment opportunities during the first 10 years	
What percentage of this value that will accrue to previously disadvantaged individuals?	

Table 2

Does the listed activity/ies applied for form part of a larger project which is not a listed activity itself e.g. a road that is a listed activity that is needed to access a drilling site where the drilling does not constitute a listed activity.	YES	NO
If indicated yes above, please provide a brief description on how the activity/ies relate to the larger project that forms part there of:		

3. GENERAL INFORMATION

Project applicant:			
Registration no (if any):			
Trading name (if any):			
Responsible position, e.g. Director, CEO, etc.:			
Contact person:			
Physical address:			
Postal address:			
Postal code:	Cell:		
Telephone:	Fax:		
E-mail:			

Provincial Authority:			
Contact person:			
Postal address:			
Postal code:	Cell:		
Telephone:	Fax:		
E-mail:			

Local municipality			
Contact person:			
Postal address:			
Postal code:	Cell:		
Telephone:	Fax:		
E-mail:			

In instances where there is more than one local authority involved, please attach a list of those local authorities with their contact details as **Appendix 2**.

Landowner:			
Contact person:			
Postal address:			
Postal code:	Cell:		
Telephone:	Fax:		
E-mail:			

In instances where there is more than one landowner, please attach a list of those landowners with their contact details as **Appendix 3**. If the applicant is not the owner or person in control of the land, proof of notice to the landowner or person in control of the land on which the activity is to be undertaken must be submitted in **Appendix 3**.

Identified Competent Authority to consider the application:			
Reason(s) in terms of Sec 24C of NEMA 1998 as amended			

4. ENVIRONMENTAL ASSESSMENT PRACTITIONER (EAP) INFORMATION

EAP:			
Professional affiliation/registration:			
Contact person (if different from EAP):			
Company:			
Physical address:			
Postal address:			
Postal code:		Cell:	
Telephone:		Fax:	
E-mail:			

If an EAP has not been appointed please ensure that an independent EAP is appointed as stipulated by Regulation 12 of GN R.326, dated April 2017 as amended, prior to the commencement of the process.

The declaration of independence and the Curriculum Vitae (indicating the experience with environmental impact assessment and the relevant application processes) of the EAP must also be submitted to the Department.

5. SITE DESCRIPTION

Provide a detailed description of the site involved in the application.

Province						
District Municipality						
Local Municipality						
Ward number(s)						
Nearest town(s)						
Farm name(s) and number(s)						
Portion number(s)						
Coordinates of corner points of study area (if there are more than 7 co-ordinates, please attach a list as Appendix 4)	Latitude (S) (DDMMSS)			Longitude (E) (DDMMSS)		
For linear developments a list of turning points						

must be attached						
------------------	--	--	--	--	--	--

SG 21 Digit Code(s)

(If there are more than 4, please attach a list with the rest of the codes as **Appendix 4**)

1	2	3	4	5															

Please attach a copy of the title deed(s) and SG diagram(s) to the application as **Appendix 5**.

Please attach a copies of environmental authorisations obtained on the same property as **Appendix 6**.

Are there any other applications for Environmental Authorisation on the same property?	YES	NO
If YES, please indicate the following:		
Competent Authority		
Reference Number		
Project Name		
Please provide details of the steps taken to ascertain this information:		

6. ACTIVITIES TO BE AUTHORISED

For an application for authorisation that involves more than one listed activity that, together, make up one development proposal, all the listed activities pertaining to this application must be indicated.

Detailed description of listed activities associated with the project	
Listed activity as described in GN R.327 and 324.	Description of project activity that triggers listed activity
<i>e.g. GN R.327 Item XX(x): The construction of a bridge exceeding 100m square metres in size within a water course.</i>	<i>e.g. A bridge measuring 110 square metres will be constructed within the watercourse.</i>

Please note that any authorisation that may result from this application will only cover activities specifically applied for. Co-ordinate points indicating the location of each listed activity must be provided with the relevant report (i.e. either BAR or EIR).

Please provide a project map indicating any sensitive areas (e.g. critical biodiversity area, World Heritage Site, etc.) overlaid by the study area in **Appendix 7**.

A project schedule, indicating the different phases and timelines of the project, must be attached as **Appendix 8**.

7. PUBLIC PARTICIPATION

Provide details of the public participation process proposed for the application as required by Regulation 41(2) of GN R. 326, dated April 2017.

--

Should any of the aspect(s) of the Public Participation process be considered unfeasible or unreasonable for this application, please complete Section 9 below.

8. OTHER AUTHORISATIONS REQUIRED

LEGISLATION	AUTHORISATION REQUIRED		APPLICATION SUBMITTED	
	YES	NO	YES	NO
SEMA's				
National Environmental Management: Air Quality Act	YES	NO	YES	NO
National Environmental Management: Biodiversity Act	YES	NO	YES	NO
National Environmental Management: Integrated Coastal Management Act	YES	NO	YES	NO
National Environmental Management: Protected Areas Act	YES	NO	YES	NO
National Environmental Management: Waste Act	YES	NO	YES	NO
National legislation				
Mineral Petroleum Development Resources Act	YES	NO	YES	NO
National Water Act	YES	NO	YES	NO
National Heritage Resources Act	YES	NO	YES	NO
Others: Please specify	YES	NO	YES	NO

9. LIST OF APPENDICES

		SUBMITTED	
		YES	NO
Appendix 1	Strategic Infrastructure Projects	YES	N/A
Appendix 2	List of Local Municipalities (with contact details)	YES	N/A
Appendix 3	List of land owners (with contact details) and proof of notification of land owners.	YES	NO
Appendix 4	List of co-ordinates and/or SGIDs	YES	N/A
Appendix 5	Title deed(s) and SG diagram(s)	YES	NO
Appendix 6	Copies of Environmental Authorisations obtained for the same property	YES	N/A
Appendix 7	Map indicating triggered areas for GN R.985	YES	NO
Appendix 8	Project schedule	YES	N/A
Appendix 9	Declaration of Applicant	YES	NO

Appendix 10	Declaration of EAP	YES	NO
-------------	--------------------	-----	----

**APPENDIX 1
STRATEGIC INFRASTRUCTURE PROJECTS**

<p>SIP 1: Unlocking the northern mineral belt with Waterberg as the catalyst</p> <ul style="list-style-type: none"> • Unlock mineral resources • Rail, water pipelines, energy generation and transmission infrastructure • Thousands of direct jobs across the areas unlocked • Urban development in Waterberg - first major post-apartheid new urban centre will be a “green” development project • Rail capacity to Mpumalanga and Richards Bay • Shift from road to rail in Mpumalanga • Logistics corridor to connect Mpumalanga and Gauteng. 	
<p>SIP 2: Durban-Free State-Gauteng logistics and industrial corridor</p> <ul style="list-style-type: none"> • Strengthen the logistics and transport corridor between SA’s main industrial hubs • Improve access to Durban’s export and import facilities • Integrate Free State Industrial Strategy activities into the corridor • New port in Durban • Aerotropolis around OR Tambo International Airport. 	
<p>SIP 3: South-Eastern node & corridor development</p> <ul style="list-style-type: none"> • New dam at Mzimvubu with irrigation systems • N2-Wild Coast Highway which improves access into KwaZulu-Natal and national supply chains • Strengthen economic development in Port Elizabeth through a manganese rail capacity from Northern Cape • A manganese sinter (Northern Cape) and smelter (Eastern Cape) • Possible Mthombo refinery (Coega) and transshipment hub at Ngqura and port and rail upgrades to improve industrial capacity and performance of the automotive sector. 	
<p>SIP 4: Unlocking the economic opportunities in North West Province</p> <ul style="list-style-type: none"> • Acceleration of investments in road, rail, bulk water, water treatment and transmission infrastructure • Enabling reliable supply and basic service delivery • Facilitate development of mining, agricultural activities and tourism opportunities • Open up beneficiation opportunities in North West Province. 	
<p>SIP 5: Saldanha-Northern Cape development corridor</p> <ul style="list-style-type: none"> • Integrated rail and port expansion • Back-of-port industrial capacity (including an IDZ) • Strengthening maritime support capacity for oil and gas along African West Coast • Expansion of iron ore mining production and beneficiation. 	
<p>SIP 6: Integrated municipal infrastructure project</p> <p>Develop national capacity to assist the 23 least resourced districts (19 million people) to address all the maintenance backlogs and upgrades required in water, electricity and sanitation bulk infrastructure. The road maintenance programme will enhance service delivery capacity thereby impacting positively on the population.</p>	
<p>SIP 7: Integrated urban space and public transport programme</p> <p>Coordinate planning and implementation of public transport, human settlement, economic and social infrastructure and location decisions into sustainable urban settlements connected by densified transport corridors. This will focus on the 12 largest urban centres of the country, including all the metros in South Africa. Significant work is underway on urban transport integration.</p>	

<p>SIP 8: Green energy in support of the South African economy Support sustainable green energy initiatives on a national scale through a diverse range of clean energy options as envisaged in the Integrated Resource Plan (IRP2010) and support bio-fuel production facilities.</p> <p>Indicate capacity in MW:</p>	
<p>SIP 9: Electricity generation to support socioeconomic development Accelerate the construction of new electricity generation capacity in accordance with the IRP2010 to meet the needs of the economy and address historical imbalances. Monitor implementation of major projects such as new power stations: Medupi, Kusile and Ingula.</p> <p>Indicate capacity in MW:</p>	
<p>SIP 10: Electricity transmission and distribution for all Expand the transmission and distribution network to address historical imbalances, provide access to electricity for all and support economic development. Align the 10-year transmission plan, the services backlog, the national broadband roll-out and the freight rail line development to leverage off regulatory approvals, supply chain and project development capacity.</p>	
<p>SIP 11: Agri-logistics and rural infrastructure Improve investment in agricultural and rural infrastructure that supports expansion of production and employment, small-scale farming and rural development, including facilities for storage (silos, fresh-produce facilities, packing houses); transport links to main networks (rural roads, branch train-line, ports), fencing of farms, irrigation schemes to poor areas, improved R&D on rural issues (including expansion of agricultural colleges), processing facilities (abattoirs, dairy infrastructure), aquaculture incubation schemes and rural tourism infrastructure.</p>	
<p>SIP 12: Revitalisation of public hospitals and other health facilities Build and refurbish hospitals, other public health facilities and revamp 122 nursing colleges. Extensive capital expenditure to prepare the public healthcare system to meet the requirements of the National Health Insurance (NHI) system. The SIP contains major builds for 6 hospitals</p>	
<p>SIP 13: National school build programme A national school build programme driven by uniformity in planning, procurement, contract management and provision of basic services. Replace inappropriate school structures and address basic service backlog and provision of basic services under the Accelerated School Infrastructure Delivery Initiative (ASIDI). In addition, address national backlogs in classrooms, libraries, computer labs and admin buildings. Improving the learning environment will strengthen outcomes especially in rural schools, as well as reduce overcrowding</p>	
<p>SIP 14: Higher education infrastructure Infrastructure development for higher education, focusing on lecture rooms, student accommodation, libraries and laboratories, as well as ICT connectivity. Development of university towns with a combination of facilities from residence, retail to recreation and transport. Potential to ensure shared infrastructure such as libraries by universities, FETs and other educational institutions. Two new universities will be built - in Northern Cape and Mpumalanga.</p>	
<p>SIP 15: Expanding access to communication technology Provide for broadband coverage to all households by 2020 by establishing core Points of Presence (POPs) in district municipalities, extend new Infracore fibre networks across provinces linking districts, establish POPs and fibre connectivity at local level, and further penetrate the network into deep rural areas. While the private sector will invest in ICT infrastructure for urban and corporate networks, government will co-invest for township and rural access, as well as for e-government, school and health connectivity.</p>	

<p>The school roll-out focus is initially on the 125 Dinaledi (science and maths-focussed) schools and 1525 district schools. Part of digital access to all South Africans includes TV migration nationally from analogue to digital broadcasting.</p>	
<p>SIP 16: SKA &Meerkat SKA is a global mega-science project, building an advanced radio-telescope facility linked to research infrastructure and high-speed ICT capacity and provides an opportunity for Africa and South Africa to contribute towards global advanced science projects.</p>	
<p>SIP 17: Regional integration for African cooperation and development Participate in mutually beneficial infrastructure projects to unlock long-term socio-economic benefits by partnering with fast growing African economies with projected growth ranging between 3% and 10%. The projects involving transport, water and energy also provide competitively-priced, diversified, short and medium to long-term options for the South African economy where, for example, electricity transmission in Mozambique (Cesul) could assist in providing cheap, clean power in the short-term whilst Grand Inga in the DRC is long-term. All these projects complement the Free Trade Area (FTA) discussions to create a market of 600 million people in South, Central and East Africa.</p>	
<p>SIP 18: Water and sanitation infrastructure A 10-year plan to address the estimated backlog of adequate water to supply 1.4m households and 2.1m households to basic sanitation. The project will involve provision of sustainable supply of water to meet social needs and support economic growth. Projects will provide for new infrastructure, rehabilitation and upgrading of existing infrastructure, as well as improve management of water infrastructure.</p>	

**APPENDIX 2 (IF APPLICABLE)
LIST OF LOCAL MUNICIPALITIES**

**APPENDIX 3
LIST OF LAND OWNERS
PROOF OF NOTIFICATION OF LAND OWNERS**

**APPENDIX 4 (IF APPLICABLE)
LIST OF CO-ORDINATES AND/OR SGIDS**

**APPENDIX 5
TITLE DEED(S) AND SG DIAGRAM(S)**

APPENDIX 6 (IF APPLICABLE)
COPIES OF ENVIRONMENTAL AUTHORISATIONS OBTAINED ON THE SAME PROPERTY

**APPENDIX 7 (IF APPLICABLE)
PROJECT MAP**

**APPENDIX 8
PROJECT SCHEDULE**

APPENDIX 9

DECLARATION OF THE APPLICANT

I, _____ declare that I -

- am, or represent¹, the applicant in this application;
- have appointed / will appoint (delete that which is not applicable) an environmental assessment practitioner to act as the independent environmental assessment practitioner for this application / will obtain exemption from the requirement to obtain an environmental assessment practitioner²;
- will provide the environmental assessment practitioner and the competent authority with access to all information at my disposal that is relevant to the application;
- will be responsible for the costs incurred in complying with the Regulations, including but not limited to –
 - costs incurred in connection with the appointment of the environmental assessment practitioner or any person contracted by the environmental assessment practitioner;
 - costs incurred in respect of the undertaking of any process required in terms of the Regulations;
 - costs in respect of any fee prescribed by the Minister or MEC in respect of the Regulations;
 - costs in respect of specialist reviews, if the competent authority decides to recover costs; and
 - the provision of security to ensure compliance with conditions attached to an environmental authorisation, should it be required by the competent authority;
- will ensure that the environmental assessment practitioner is competent to comply with the requirements of the Regulations and will take reasonable steps to verify that the EAP
 - know the Act and the regulations, and how they apply to the proposed development
 - know any applicable guidelines
 - perform the work objectively, even if the findings do not favour the applicant
 - disclose all information which is important to the application and the proposed development
 - have expertise in conducting environmental impact assessments
 - complies with the Regulations
- will inform all registered interested and affected parties of any suspension of the application as well as of any decisions taken by the competent authority in this regard;
- am responsible for complying with the conditions of any environmental authorisation issued by the competent authority;
- hereby indemnify the Government of the Republic, the competent authority and all its officers, agents and employees, from any liability arising out of the content of any report, any procedure or any action which the applicant or environmental assessment practitioner is responsible for in terms of these Regulations;
- will not hold the competent authority responsible for any costs that may be incurred by the applicant in proceeding with an activity prior to obtaining an environmental authorisation or prior to an appeal being decided in terms of these Regulations;
- will perform all other obligations as expected from an applicant in terms of the Regulations;
- all the particulars furnished by me in this form are true and correct; and
- I realise that a false declaration is an offence in terms of regulation 71 and is punishable in terms of section 24F of the Act.

¹If this is signed on behalf of the applicant, proof of such authority from the applicant must be attached.

²If exemption is obtained from appointing an EAP, the responsibilities of an EAP will automatically apply to the person conducting the environmental impact assessment in terms of the Regulations.

Signature³ of the applicant⁴/ Signature on behalf of the applicant:

Name of company (if applicable):

Date:

Signature of the Commissioner of Oaths:

Date:

Designation:

Official stamp (below):

³Only original signatures will be accepted. No scanned, copied or faxed signatures will be accepted.

⁴If the applicant is a juristic person, a signature on behalf of the applicant is required as well as proof of such authority. An EAP may not sign on behalf of an applicant.

APPENDIX 10

DECLARATION OF THE EAP

I, _____, declare that –

General declaration:

- I act as the independent environmental practitioner in this application
- I will perform the work relating to the application in an objective manner, even if this results in views and findings that are not favourable to the applicant
- I declare that there are no circumstances that may compromise my objectivity in performing such work;
- I have expertise in conducting environmental impact assessments, including knowledge of the Act, Regulations and any guidelines that have relevance to the proposed activity;
- I will comply with the Act, Regulations and all other applicable legislation;
- I will take into account, to the extent possible, the matters listed in regulation 8 of the Regulations when preparing the application and any report relating to the application;
- I have no, and will not engage in, conflicting interests in the undertaking of the activity;
- I undertake to disclose to the applicant and the competent authority all material information in my possession that reasonably has or may have the potential of influencing - any decision to be taken with respect to the application by the competent authority; and - the objectivity of any report, plan or document to be prepared by myself for submission to the competent authority;
- I will ensure that information containing all relevant facts in respect of the application is distributed or made available to interested and affected parties and the public and that participation by interested and affected parties is facilitated in such a manner that all interested and affected parties will be provided with a reasonable opportunity to participate and to provide comments on documents that are produced to support the application;
- I will ensure that the comments of all interested and affected parties are considered and recorded in reports that are submitted to the competent authority in respect of the application, provided that comments that are made by interested and affected parties in respect of a final report that will be submitted to the competent authority may be attached to the report without further amendment to the report;
- I will keep a register of all interested and affected parties that participated in a public participation process; and
- I will provide the competent authority with access to all information at my disposal regarding the application, whether such information is favourable to the applicant or not
- all the particulars furnished by me in this form are true and correct;
- will perform all other obligations as expected from an environmental assessment practitioner in terms of the Regulations; and
- I realise that a false declaration is an offence in terms of regulation 71 of the Regulations and is punishable in terms of section 24F of the Act.

Disclosure of Vested Interest (delete whichever is not applicable)

- I do not have and will not have any vested interest (either business, financial, personal or other) in the proposed activity proceeding other than remuneration for work performed in terms of the Regulations;
- I have a vested interest in the proposed activity proceeding, such vested interest being:

Signature of the environmental assessment practitioner:

Name of company:

Date:

Signature of the Commissioner of Oaths:

Date:

Designation:

Official stamp (below)

AFRICAN OFFICES

South Africa

CAPE TOWN

T: +27 21 461 1118

JOHANNESBURG

T: +27 11 467 0945

DURBAN

T: +27 11 467 0945

GHANA

T: +233 24 243 9716

Namibia

WINDHOEK

T: + 264 61 231 287