

THE PROPOSED GRID CONNECTION INFRASTRUCTURE, NORTHERN CAPE PROVINCE, SOUTH AFRICA

DRAFT Visual Impact Basic Assessment Report



Date: 7th October 2019

Document prepared for Cape EAPrac (Pty) Ltd

On behalf of Bloemsmond Grid (Pty) Ltd

Visual Resource Management Africa cc
P O Box 7233, George, 6531
Cell: +27 (83) 560 9911
E-Mail: steve@vrma.co.za
Web: www.vrma.co.za



TABLE OF CONTENTS

1	INTRODUCTION	7
1.1	TERMS OF REFERENCE	7
1.2	STUDY TEAM	8
1.3	VISUAL ASSESSMENT APPROACH.....	8
1.4	ASSUMPTIONS AND UNCERTAINTIES.....	9
2	PROJECT DESCRIPTION	10
2.1.1	<i>Project Description provided by the client</i>	10
2.1.2	<i>Project Alternatives</i>	12
3	LEGAL FRAMEWORK.....	13
3.1	GUIDELINES FOR INTERNATIONAL AND NATIONAL GOOD PRACTICE	13
3.1.1	<i>Guidelines for Landscape and Visual Impact Assessment, Second Edition</i> ...	13
3.1.2	<i>DEA&DP Visual and Aesthetic Guidelines</i>	14
3.1.3	<i>DEA&DP Guideline for the Management of Development on Mountains, Hills and Ridges in the Western Cape</i>	14
3.2	LOCAL GOVERNMENT LEGISLATION AND PLANNING	15
4	METHODOLOGY	15
4.1	SITE INVESTIGATION.....	16
4.2	BASELINE ANALYSIS STAGE	16
4.2.1	<i>Scenic Quality</i>	16
4.2.2	<i>Receptor Sensitivity</i>	17
4.2.3	<i>Distance</i>	18
4.2.4	<i>Visual Resource Management Classes</i>	18
4.2.5	<i>Key Observation Points</i>	19
4.3	ASSESSMENT AND IMPACT STAGE.....	19
4.3.1	<i>Contrast Rating</i>	19
4.3.2	<i>Photo Montages</i>	20
4.3.3	<i>Impact Assessment Criteria</i>	21
5	BASELINE VISUAL INVENTORY ASSESSMENT	22
5.1	LANDSCAPE CONTEXT.....	22
5.1.1	<i>Protected Areas</i>	23
5.1.2	<i>Topography</i>	23
5.1.3	<i>Steep Slopes</i>	23
5.1.4	<i>Landuse and Land Cover</i>	23
5.2	PROJECT ZONE OF VISUAL INFLUENCE	24
5.3	RECEPTORS AND KEY OBSERVATION POINTS	25
6	VISUAL RESOURCE MANAGEMENT	26
6.1	PHYSIOGRAPHIC RATING UNITS	26
6.2	SCENIC QUALITY ASSESSMENT.....	29
6.2.1	<i>Bloemsmond PV 3 to 5 Collector Routings (Preferred Eastern Routing)</i>	29
6.2.2	<i>Bloemsmond PV 3 to 5 Collector Routings (Alternative Western Routing)</i>	29
6.2.3	<i>Bloemsmond PV 3 to 5 Connector Routings (Northern Routing)</i>	29
6.2.4	<i>Bloemsmond PV 3 to 5 Connector Routings (Southern Routing)</i>	29
6.3	RECEPTOR SENSITIVITY ASSESSMENT	30
6.3.1	<i>Bloemsmond PV 3 to 5 Collector Routings (Preferred Eastern Routing)</i>	30
6.3.2	<i>Bloemsmond PV 3 to 5 Collector Routings (Alternative Western Routing)</i>	30
6.3.3	<i>Bloemsmond PV 3 to 5 Connector Routings (Northern Routing)</i>	30
6.3.4	<i>Bloemsmond PV 3 to 5 Connector Routings (Southern Routing)</i>	30
6.4	VISUAL RESOURCES MANAGEMENT CLASSES.....	31
6.4.1	<u>VRM Class I</u>	31
6.4.2	<u>VRM Class II</u>	31

6.4.3	VRM Class III	31
6.4.4	VRM Class IV.....	32
7	IMPACT ASSESSMENT	32
7.1	POWER LINE LANDSCAPE AND VISUAL IMPACTS.....	33
7.1.1	<i>Bloemsmond PV Preferred Connector Impacts (Eastern Routing)</i>	33
7.1.2	<i>Bloemsmond PV Alternative Connector Impacts (Western Routing)</i>	34
7.1.3	<i>Bloemsmond PV Northern Collector Impacts</i>	35
7.1.4	<i>Bloemsmond PV Southern Collector Impacts</i>	36
8	ENVIRONMENTAL MANAGEMENT PLAN RECOMMENDATIONS.....	37
8.1	CONSTRUCTION PHASE	37
8.2	OPERATION PHASE	38
8.3	DECONSTRUCTION PHASE	38
9	CONCLUSION.....	38
10	BIBLIOGRAPHY	40
11	ANNEXURE A: FIELD SURVEY PHOTOGRAPH AND COMMENTS.....	41
12	ANNEXURE B: LANDSCAPE AND VISUAL IMPACT MAPS.....	49
13	ANNEXURE C: SPECIALIST INFORMATION.....	62
14	ANNEXURE D: VRM CHECKLISTS AND TERMINOLOGY.....	68
15	ANNEXURE E: GENERIC LIGHT SPILLAGE MITIGATIONS.....	71

TABLE OF FIGURES

FIGURE 1:	SURVEY POINT 1 PHOTOGRAPH TAKEN TOWARDS THE NORTHWEST OF THE ALTERNATIVE ACCESS OFF THE N14 NATIONAL ROAD.	41
FIGURE 2:	SURVEY POINT 2 PHOTOGRAPH TAKEN TOWARDS THE NORTHWEST OF THE PREFERRED ACCESS POINT OFF THE N14 NATIONAL ROAD.	41
FIGURE 3:	SURVEY POINT 3 PHOTOGRAPH TAKEN TOWARDS THE SOUTHWEST OF THE VINEYARDS THAT ARE LOCATED ON THE SOUTHERN PORTIONS OF THE PROPERTY.	42
FIGURE 4:	SURVEY POINT 4 PHOTOGRAPH TAKEN TOWARDS THE SOUTHEAST FROM A SLIGHTLY PROMINENT LOCALITY ON THE PROPERTY, OF THE ORANGE RIVER VALLEY WITH THE AGRICULTURALLY RELATED STRUCTURES AND VINEYARDS.....	42
FIGURE 5:	SURVEY POINT 5 PHOTOGRAPH TAKEN TOWARDS THE SOUTH OF THE TYPICAL ARID VEGETATION OF THE NAMA-KAROO LANDSCAPES OF THIS PORTION OF THE PROPERTY.....	43
FIGURE 6:	SURVEY POINT 6 PHOTOGRAPH TAKEN TO THE NORTHEAST OF THE ARID VEGETATION OF THIS PORTION OF THE PROPERTY, WITH THE KAI SOLAR ONE CSP STRUCTURE IN THE MID-GROUND.	43
FIGURE 7:	SURVEY POINT 7 PHOTOGRAPH TAKEN TOWARDS THE SOUTHEAST OF THE ROCKY OUTCROP OF THIS PORTION OF THE PROPERTY.	44
FIGURE 8:	SURVEY POINT 8 PHOTOGRAPH TAKEN TOWARDS THE NORTH OF THE SMALL ROCKY OUTCROP LOCATED TO THE NORTH WEST OF THE PROPOSED PV AREA.	44
FIGURE 9:	SURVEY POINT 9 PHOTOGRAPH TAKEN TOWARDS THE EAST OF THE KHI SOLAR ONE CSP TOWER AS SEEN FROM THE PROPOSED DEVELOPMENT FOOTPRINT.	45
FIGURE 10:	SURVEY POINT 10 PHOTOGRAPH TAKEN TOWARDS THE WEST OF THE ROCKY OUTCROPS AND LOW HILLS TO THE WEST OF THE PROPERTY.	45
FIGURE 11:	SURVEY POINT 11 PHOTOGRAPH TAKEN TOWARDS THE WEST OF THE HILLY TERRAIN LOCATED TO THE WEST OF THE PROPERTY.	46
FIGURE 12:	SURVEY POINT 12 PHOTOGRAPH TAKEN TOWARDS THE WEST OF THE LARGE PAN LOCATED ON THE PROPERTY.	46

FIGURE 13: SURVEY POINT 13 PHOTOGRAPH TAKEN NORTH OF THE REMOTE NATURE OF THE SITE.	47
FIGURE 14: SURVEY POINT 14 PHOTOGRAPH TAKEN TO THE NORTH FROM THE GRAVEL ROAD ACCESS	47
FIGURE 15: SURVEY POINT 15 PHOTOGRAPH TAKEN TO THE WEST FROM THE GRAVEL ROAD ACCESS.	48
FIGURE 16: SURVEY POINT 16 PHOTOGRAPH TAKEN TO THE SOUTHEAST FROM THE GRAVEL ROAD ACCESS TO THE UNDER CONSTRUCTION SIRIUS SOLAR PV PROJECT ONE FACILITY.....	48
FIGURE 17: SURVEY POINT 17 PHOTOGRAPH TAKEN TO THE NORTH FROM THE GRAVEL ROAD ACCESS TO THE UNDER CONSTRUCTION SIRIUS SOLAR PV PROJECT ONE FACILITY.	49
FIGURE 18: PROPOSED GRID CONNECTION ALTERNATIVES IN RELATION TO THE PROPOSED BLOEMSMOND PV PROJECTS.	50
FIGURE 19: NATIONAL AND REGIONAL GOVERNANCE LOCALITY MAP	53
FIGURE 20: RENEWABLE ENERGY DEVELOPMENT ZONES MAP WITH THE ARROW INDICATING THE APPROXIMATE LOCATION OF THE PROJECTS IN REDZ 7.	54
FIGURE 21: FIELD SURVEY POINT AND TRACK MAP.....	ERROR! BOOKMARK NOT DEFINED.
FIGURE 22: BLOEMSMOND PV CONNECTOR GRID ROUTING TOPOGRAPHIC PROFILE GRAPHS.	55
FIGURE 23: BLOEMSMOND PV COLLECTOR GRID ROUTING TOPOGRAPHIC PROFILE GRAPHS.....	56
FIGURE 24: BLOEMSMOND CONNECTOR ALTERNATIVE WEST VIEWSHED MAP	57
FIGURE 25: BLOEMSMOND CONNECTOR ALTERNATIVE EAST VIEWSHED MAP.....	58
FIGURE 26: BLOEMSMOND COLLECTOR ALTERNATIVE NORTH VIEWSHED MAP.....	59
FIGURE 27: BLOEMSMOND COLLECTOR ALTERNATIVE SOUTH VIEWSHED MAP	60
FIGURE 28: RENEWABLE ENERGY CUMULATIVE PROJECTS MAPS.	61

LIST OF TABLES

TABLE 1: AUTHORS AND CONTRIBUTORS TO THIS REPORT.	8
TABLE 2: METHODOLOGY SUMMARY TABLE	8
TABLE 3: PROJECT DETAILS TABLE	10
TABLE 4: LIST OF SAMPLING SITES WHERE LANDSCAPE AND AESTHETIC SURVEY WAS CONDUCTED.....	16
TABLE 5: VRM CLASS MATRIX TABLE	18
TABLE 6: VISUAL IMPACT ASSESSMENT CRITERIA TABLE	21
TABLE 7: PROPOSED PROJECT HEIGHTS TABLE.....	24
TABLE 8: BLOEMSMOND PV 3 TO 5 COLLECTOR GRID ROUTING SCENIC QUALITY AND RECEPTOR SENSITIVITY RATING TABLE.	27
TABLE 9: BLOEMSMOND PV 3 TO 5 CONNECTOR GRID ROUTING SCENIC QUALITY AND RECEPTOR SENSITIVITY RATING TABLE.	28
TABLE 9: BLOEMSMOND PV CONNECTOR ALT EAST IMPACTS RATINGS TABLE.....	33
TABLE 10: BLOEMSMOND PV CONNECTOR ALT WEST IMPACTS RATINGS TABLE	34
TABLE 12: NORTHERN COLLECTOR GRID IMPACTS RATINGS TABLE.....	35
TABLE 12: SOUTHERN COLLECTOR GRID IMPACTS RATINGS TABLE	36
TABLE 13: VRM AFRICA PROJECTS ASSESSMENTS TABLE	63
TABLE 14: SCENIC QUALITY CHECKLIST	68
TABLE 15: SENSITIVITY LEVEL RATING CHECKLIST	69
TABLE 16: VRM TERMINOLOGY TABLE	70

LIST OF ACRONYMS

<i>APHP</i>	Association of Professional Heritage Practitioners
<i>BLM</i>	Bureau of Land Management (United States)
<i>BOO</i>	Build, Own, and Operate
<i>BPEO</i>	Best Practicable Environmental Option
<i>CALP</i>	Collaborative for Advanced Landscape Planning
<i>CFPS</i>	Coal Fired Power Station
<i>DEM</i>	Digital Elevation Model
<i>DEA&DP</i>	Department of Environmental Affairs & Development Planning
<i>DoC</i>	Degree of Contrast
<i>EIA</i>	Environmental Impact Assessment
<i>EMP</i>	Environmental Management Plan
<i>NTC</i>	NTC (Pty) Ltd
<i>ESIA</i>	Environmental and Social Impact Assessment
<i>GIS</i>	Geographic Information System
<i>GPS</i>	Global Positioning System
<i>I&APs</i>	Interested and Affected Parties
<i>IDP</i>	Integrated Development Plan
<i>IEMA</i>	Institute of Environmental Management and Assessment (United Kingdom)
<i>IEMP</i>	Integrated Environmental Management Plan
<i>KOP</i>	Key Observation Point
<i>LVIA</i>	Landscape and Visual Impact Assessment
<i>MAMSL</i>	Metres above mean sea level
<i>NELPAG</i>	New England Light Pollution Advisory Group
<i>PP</i>	Public participation
<i>PSDF</i>	Provincial Spatial Development Framework
<i>SDF</i>	Spatial Development Framework
<i>SEA</i>	Strategic Environmental Assessment
<i>ToR</i>	Terms of Reference
<i>VAC</i>	Visual Absorption Capacity
<i>VIA</i>	Visual Impact Assessment
<i>VRM</i>	Visual Resource Management
<i>VRMA</i>	Visual Resource Management Africa
<i>ZVI</i>	Zone of Visual Influence

GLOSSARY OF TECHNICAL TERMS

Technical Terms	Definition (Oberholzer, 2005)
Degree of Contrast	The measure in terms of the form, line, colour and texture of the existing landscape in relation to the proposed landscape modification in relation to the defined visual resource management objectives.
Visual intrusion	Issues are concerns related to the proposed development, generally phrased as questions, taking the form of “what will the impact of some activity be on some element of the visual, aesthetic or scenic environment”.
Receptors	Individuals, groups or communities who would be subject to the visual influence of a particular project.
Sense of place	The unique quality or character of a place, whether natural, rural or urban.
Scenic corridor	A linear geographic area that contains scenic resources, usually, but not necessarily, defined by a route.
Viewshed	The outer boundary defining a view catchment area, usually along crests and ridgelines. Similar to a watershed. This reflects the area, or the extent thereof, where the landscape modification would probably be seen.
Visual Absorption Capacity	The potential of the landscape to conceal the proposed project.

Technical Term	Definition (USDI., 2004)
Key Observation Point	Receptors refer to the people located in the most critical locations, or key observation points, surrounding the landscape modification, who make consistent use of the views associated with the site where the landscape modifications are proposed. KOPs can either be a single point of view that an observer/evaluator uses to rate an area or panorama, or a linear view along a roadway, trail, or river corridor.
Visual Resource Management	A map based landscape and visual impact assessment method development by the Bureau of Land Management (USA).
Zone of Visual Influence	The ZVI is defined as ‘the area within which a proposed development may have an influence or effect on visual amenity.’

1 INTRODUCTION

1.1 Terms of Reference

Visual Resource Management Africa CC (VRMA) was appointed by Cape EAPrac (Pty) Ltd, on behalf of Bloemsmond Grid (Pty) Ltd, to undertake a **Visual Impact Assessment** for the proposed development located in the North Cape Province, South Africa. The process that VRM Africa follows when undertaking a VIA is based on the United States Bureau of Land Management's (BLM) Visual Resource Management method (USDI., 2004). This mapping and GIS-based method of assessing landscape modifications allows for increased objectivity and consistency by using standard assessment criteria.

The scope of this study is to cover the entire proposed project area. The broad terms of reference for the study are as follows:

- Collate and analyse all available secondary data relevant to the affected proposed project area. This includes a site visit of the full site extent, as well as of areas where potential impacts may occur beyond the site boundaries.
- Specific attention is to be given to the following:
 - Quantifying and assessing existing scenic resources/visual characteristics on, and around, the proposed site;
 - Evaluation and classification of the landscape in terms of sensitivity to a changing land use;
 - Determining viewsheds, view corridors and important viewpoints in order to assess the visual impacts of the proposed project;
 - Determining visual issues, including those identified in the public participation process;
 - Reviewing the legal framework that may have implications for visual/scenic resources;
 - Assessing the significance of potential visual impacts resulting from the proposed project for the construction, operation and decommissioning phases of the proposed project;
 - Assessing the potential cumulative impacts associated with the visual impact;
 - Generate photomontages of the proposed landscape modification;
 - Identifying possible mitigation measures to reduce negative visual impacts for inclusion into the proposed project design, including input into the Environmental Management Programme (EMPr).

1.2 Study Team

Contributors to this study are summarised in Table 1 below.

Table 1: Authors and Contributors to this Report.

Aspect	Person	Organisation / Company	Qualifications
Landscape and Visual Assessment (author of this report)	Stephen Stead B.A (Hons) Human Geography, 1991 (UKZN, Pietermaritzburg)	VRMA	<ul style="list-style-type: none"> Accredited with the Association of Professional Heritage Practitioner and 16 years of experience in visual assessments including renewable energy, powerlines, roads, dams across southern Africa.
Contrast rating and editing.	Lisa Schultz B.A Fine Art 1989 (UKZN, Pietermaritzburg)	VRMA	<ul style="list-style-type: none"> 12 years of experience in contrast ratings.

1.3 Visual Assessment Approach

The following approach was used in understanding the landscape processes and informing the magnitude of the impacts of the proposed landscape modification. The table below lists a number of standardised procedures recommended as a component of best international practice.

Table 2: Methodology Summary Table

Action	Description
Site Survey	The identification of existing scenic resources and sensitive receptors in and around the study area in order to understand the context of the proposed development within its surroundings. This is to ensure that the intactness of the landscape and the prevailing sense of place are taken into consideration.
Project Description	Provide a description of the expected project, and the components that will make up the landscape modification.
Reviewing the Legal Framework	The legal, policy and planning framework that may have implications for visual aspects of the proposed development. Heritage legislation tends to be pertinent in relation to natural and cultural landscapes, while Strategic Environmental Assessments (SEAs) for renewable energy provide a guideline at the regional scale.
Determining the Zone of Visual Influence	This includes mapping of viewsheds and view corridors in relation to the proposed project elements, in order to assess the zone of visual influence of the proposed project. Based on the topography of the landscape as represented by a Digital Elevation Model, an approximate area is defined which provides an expected area where the landscape modification has the potential to influence landscapes (or landscape processes) or receptor viewpoints.
Identifying Visual Issues and Visual Resources	Visual issues are identified during the public participation process, which is being carried out by other specialists. The visual, social or heritage specialists may also identify visual issues. The significance and proposed mitigation of the visual issues are addressed as part of the visual assessment.

Assessing Potential Visual Impacts	An assessment is made of the significance of potential visual impacts resulting from the proposed project for the construction, operational and decommissioning phases of the project. The rating of visual significance is based on the methodology provided by the Environmental Assessment Practitioner (EAP), in this case NTC Environmental, to ensure consistency across the various specialist studies.
Formulating Mitigation Measures	Possible mitigation measures are identified to avoid or minimise negative visual impacts of the proposed project. The intention is that these would be included in the project design, the Environmental Management programme (EMPr) and the authorisation conditions.

The above table makes reference to the DEA&DP Visual and Aesthetic Guideline (Oberholzer, 2005)

1.4 Assumptions and Uncertainties

- Digital Elevation Models (DEM) and viewsheds were generated using ASTER elevation data (NASA, 2009). Although every effort to maintain accuracy was undertaken, as a result of the DEM being generated from satellite imagery and not being a true representation of the earth's surface, the viewshed mapping is approximate and may not represent an exact visibility incidence.
- The use of open source satellite imagery was utilised for base maps in the report;
- Some of the mapping in this document was created using Bing Maps, Open Source Map, ArcGIS Online and Google Earth Satellite imagery.
- The project deliverables, including electronic copies of reports, maps, data, shape files and photographs are based on the author's professional knowledge, as well as available information.
- VRM Africa reserves the right to modify aspects of the project deliverables if and when new/additional information may become available from research or further work in the applicable field of practice, or pertaining to this study.

2 PROJECT DESCRIPTION

The following text and tables outline the client's project description. The preferred layout plan, project examples and project alternatives can be viewed in the following Figure:

Figure 18: Proposed grid collector alternatives in relation to the proposed Bloemsmond PV projects and site survey points.

2.1.1 Project Description provided by the client

Bloemsmond Grid (Pty) Ltd proposes the construction and operation of a grid connection infrastructure for the five proposed Bloemsmond solar PV facilities near Upington in the Northern Cape Province. The grid connection infrastructure comprises the following:

- Three facility substations;
- Three single circuit 33kV or 132kV lines from on-site facility substations to the Bloemsmond Collector Substation (authorised under Bloemsmond 1 and 2 EA); and
- One double circuit 132KV power line from the Bloemsmond Collector Substation to the Upington Main Transmission Substation (MTS).

A grid connection corridor approximately 300m wide (which increases to ~1.3 km at the Upington Main Transmission Substation) and 12 km long is being assessed to allow for the optimisation of the grid connection and associated infrastructure to accommodate the identified environmental sensitivities. The grid connection infrastructure will be developed within the 300m wide grid connection corridor. Other associated infrastructure will also be required for the grid connection solution such as access tracks/roads and laydown areas.

Table 3: Project Details Table

Applicant Details	
Applicant Details	Bloemsmond Grid (Pty) Ltd
Company Registration Number:	2014/ 142363/ 07
BBBEE Status:	N/A
Project Name:	Bloemsmond grid connection infrastructure
Property Details	<p>The grid connection crosses the following properties:</p> <ul style="list-style-type: none"> • Portion 5 of Farm Bloemsmond 455 • Portion 14 of Farm Bloemsmond 455 • Remainder of Farm Dyasonsklip 454 • Remainder of Farm Rooipunt 617 • Remainder 638 Tungsten Lodge • Olyvenhouts Drift Settlement Agricultural Holding, Holding Number 1080

Grid connection	Substation to which project will connect.	The Bloemsmond grid connection infrastructure will facilitate the connection of five facility substations to a collector substation, and then a 132kV powerline will connect the collector substation to the National Grid via the Upington Main Transmission Substation (MTS).
	Capacity of substations to connect facilities	<p>Three substations are required for the Bloemsmond grid connection infrastructure:</p> <p>Bloemsmond 3 substation/ switching station: a maximum of 132kV</p> <p>Bloemsmond 4 substation/ switching station: a maximum of 132kV</p> <p>Bloemsmond 5 substation: a maximum of 132kV</p> <p>There are two alternatives proposed for the Bloemsmond 4 and Bloemsmond 5 substation/ switching stations: a western alternative and an eastern alternative for each project.</p>
Power line/s	Number of overhead power lines required	<p>Four overhead power lines are required for the Bloemsmond grid connection infrastructure:</p> <ol style="list-style-type: none"> 1. B3BC: a single circuit 33kV or 132kV line from Bloemsmond 3 substation/ switching station to the Bloemsmond Collector Substation 2. B4BC: a single circuit 33kV or 132kV line from Bloemsmond 4 substation/ switching station to the Bloemsmond Collector Substation 3. B5BC: a single circuit 33kV or 132kV line from Bloemsmond 5 substation to the Bloemsmond Collector Substation 4. COLLECTOR-MTS: a double circuit 132kV line from the Bloemsmond Collector Substation to the Upington MTS <p>-</p>
	Voltage of overhead power lines	33kV or 132kV
	Height of the Power Line	<32m
	Servitude Width	Maximum of 31m – 36m.
Auxiliary Infrastructure		
Other infrastructure	Additional Infrastructure	<ul style="list-style-type: none"> - access tracks/roads - laydown areas

	Details of access roads	The access roads will not exceed 8m in width. Access to the grid connection infrastructure will be possible via existing roads in close vicinity to the infrastructure. Apart from these existing roads, the proposed Bloemsmond facilities will contain access roads that can also be used to access the infrastructure. Formal roads will not be constructed underneath the power lines for maintenance purposes; access for maintenance purposes will be limited to jeep tracks.
	Extent of areas required for laydown of materials and equipment	Approximately 1 or 2 of laydown areas will be required (Laydown areas will not exceed 2ha).

2.1.2 Project Alternatives

There are two alternative grid connection corridor routes proposed for **B4BC**, **B5BC** and **COLLECTOR-MTS**.

B4BC:

- Eastern alternative (preferred): a single circuit 33kV or 132kV line from Bloemsmond 4 eastern alternative substation running to the eastern boundary of Portion 14 of Bloemsmond 455, and then south along the boundary and west to the Bloemsmond Collector Substation
- Western Alternative: a single circuit 33kV or 132kV line from Bloemsmond 4 western alternative substation running along the western boundary of Portion 5 of Bloemsmond 455 to the Bloemsmond Collector Substation

B5BC:

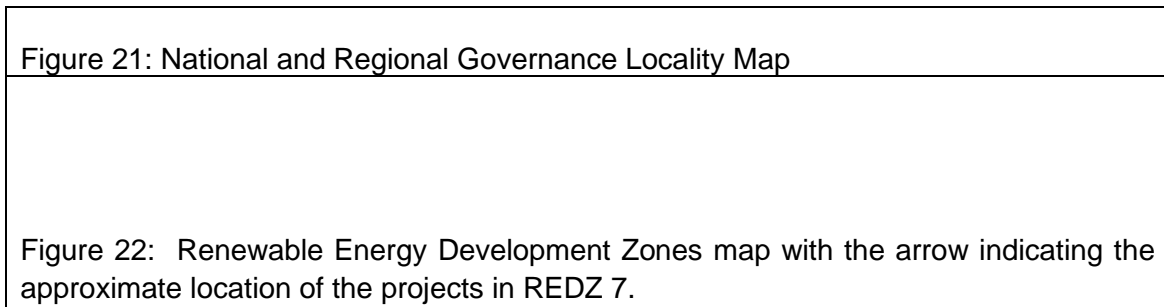
- Western alternative: a single circuit 33kV or 132kV line from Bloemsmond 5 western alternative substation running along the western boundary to the Bloemsmond Collector Substation
- Eastern alternative (preferred): a single circuit 33kV or 132kV line from Bloemsmond 5 eastern alternative substation running along the eastern boundary to the Bloemsmond Collector Substation

COLLECTOR-MTS:

- Alternative a: via the approved/ constructed Dyasonsklip Substation and on to the Upington MTS
- Alternative b: southwards along the eastern boundary, and then running adjacent to the Eskom Aries-Upington 400kV servitude.

3 LEGAL FRAMEWORK

In order to comply with the Visual Resource Management requirements, it is necessary to relate the proposed landscape modification in terms of International Best Practice in understanding landscapes and landscape processes. The proposed project also needs to be evaluated in terms of 'policy fit'. This requires a review of National and Regional policy and planning for the area to ensure that the scale, density and nature of activities or developments are harmonious and in keeping with the planned sense of place and character of the area. The following maps provides the spatial context to the provincial and local governments:



As can be seen in the National and Regional locality map, the property is located in the Kai !Garib Local Municipality in the ZF Mgcawu District which is located within the Northern Cape Province.

3.1 Guidelines for International and National Good Practice

For cultural landscapes, the following documentation provides good practice guidelines, specifically:

- United Kingdom Guidelines for Landscape and Visual Impact Assessment (GLVIA), Second Edition;
- DEA&DP Visual and Aesthetic Guideline;
- DEA&DP Hills and Ridges Guideline.

3.1.1 *Guidelines for Landscape and Visual Impact Assessment, Second Edition*

The Landscape Institute and the Institute of Environmental Management and Assessment (United Kingdom) have compiled a book outlining best practice in landscape and visual impact assessment. This has become a key guideline for LVIA in the United Kingdom. "The principal aim of the guideline is to encourage high standards for the scope and context of landscape and visual impact assessments, based on the collegiate opinion and practice of the members of the Landscape Institute and the Institute of Environmental Management and Assessment. The guidelines also seek to establish certain principles and will help to achieve consistency, credibility and effectiveness in landscape and visual impact assessment, when carried out as part of an EIA" (The Landscape Institute, 2003);

In the introduction, the guideline states that 'Landscape encompasses the whole of our external environment, whether within village, towns, cities or in the countryside. The nature and pattern of buildings, streets, open spaces and trees – and their interrelationships within

the built environment – are an equally important part of our landscape heritage” (The Landscape Institute, 2003: Pg. 9). The guideline identifies the following reasons why landscape is important in both urban and rural contexts, in that it is:

- An essential part of our natural resource base;
- A reservoir of archaeological and historical evidence;
- An environment for plants and animals (including humans);
- A resource that evokes sensual, cultural and spiritual responses and contributes to our urban and rural quality of life;
- A valuable recreation resource. (The Landscape Institute, 2003);

Comment

The proposed development is not sited in an area that forms an essential part of the natural resource base or in an area of archaeological and historical significance. No recreation resources were identified on the property or in the immediate surrounds.

3.1.2 DEA&DP Visual and Aesthetic Guidelines

Reference to the Western Cape Department of Environmental Affairs and Development Planning (DEA&DP) Guideline for involving visual and aesthetic specialists in EIA processes is provided in terms of southern African best practice in Visual Impact Assessment. The report compiled by Oberholzer states that the Best Practicable Environmental Option (BPEO) should address the following:

- Ensure that the scale, density and nature of activities or developments are harmonious and in keeping with the sense of place and character of the area. The BPEO must also ensure that development must be located to prevent structures from being a visual intrusion (i.e. to retain open views and vistas).
- Long term protection of important scenic resources and heritage sites.
- Minimisation of visual intrusion in scenic areas.
- Retention of wilderness or special areas intact as far as possible.
- Responsiveness to the area’s uniqueness, or sense of place. (Oberholzer, 2005)

Comment

While the study area is flat and has no unique landscape resources, the areas to the west depict some unique land forms that include dune-scape and rocky outcrops, which when combined with the Nama-karoo landscape and remoteness of the locality, do create opportunities for eco-tourism. To date, these scenic resources have not been taken up, other than for the use of game farming in the area.

3.1.3 DEA&DP Guideline for the Management of Development on Mountains, Hills and Ridges in the Western Cape.

The following environmental characteristics will serve as key indicators of environmental sensitivity for the directorates. As such they will serve as critical factors in the Directorate’s decision-making process when determining whether to authorise or refuse a development application made in terms of the EIA Regulations:

- Development on steep slopes (i.e. steeper than 1:4) will be strongly discouraged as such areas are subject to erosion and instability. Slope steepness will be evaluated for the areas where development is being proposed and not for the study area as a

whole. As a principle, development should be located on lower-lying or gently sloping portions of a site;

- Development on the crest of a mountain, hill or ridge will be strongly discouraged;
- Development in an area, which has been declared a mountain catchment area in terms of the Mountain Catchment Areas Act, Act 63 of 1970 will be strongly discouraged. (Western Cape Government, 2002)

Comment

There are no prominent hills or ridgelines along the routing.

3.2 Local Government Legislation and Planning

The following spatial planning documentation relating to development within the Kai !Garib was identified in the Social Impact Assessment report undertaken by Tony Barbour; “the key priority issues identified in the IDP includes poverty, unemployment, lack of youth development and Local Economic Development. Of key relevance the IDP also notes that the KGLM is positive about the contribution of renewable energy, specifically solar, to the local economy and future economic development. In this regard there are already six established Independent Power Producers in the KGLM (Table 2.2) and a further 21 applications in place. The KGLM is also a participant in the ZF Mgcawu Development Forum, an initiative coordinated by the IDC which aims to ensure that integrated development planning and implementation of regional projects take place. This includes the renewable energy and mining plants, together with other industry stakeholders such as agricultural, business and civil society stakeholders” (Barbour, 2019). As the property falls within the REDZ7 strategic area, and many other solar renewable energy projects are located in the area, it is likely that further solar energy projects are supported at a District and Local Municipal planning level. However, care would need to be undertaken to ensure that the visual resources that could allow for eco-tourism in the area, are not degraded by renewable energy development. These include the N14 National Highway as well as the rocky hills and dunes to the west of the property.

4 METHODOLOGY

The process that VRMA follows when determining landscape significance is based on the United States Bureau of Land Management’s (BLM) Visual Resource Management method (USDI., 2004). This mapping and GIS-based method of assessing landscape modifications allows for increased objectivity and consistency by using standard assessment criteria. The following key factors determine the suitability of landscape change:

- *“Different levels of scenic values require different levels of management. For example, management of an area with high scenic value might be focused on preserving the existing character of the landscape, and management of an area with little scenic value might allow for major modifications to the landscape. Determining how an area should be managed first requires an assessment of the area’s scenic values”.*
- *“Assessing scenic values and determining visual impacts can be a subjective process. Objectivity and consistency can be greatly increased by using the basic design elements of form, line, colour, and texture, which have often been used to describe and evaluate landscapes, to also describe proposed projects. Projects that*

repeat these design elements are usually in harmony with their surroundings; those that don't create contrast. By adjusting project designs so the elements are repeated, visual impacts can be minimized" (USDI., 2004).

The assessment comprises two main sections: firstly, the **Baseline Stage** to identify the visual resources and key observation locations within the project zone of visual influence; and secondly, the **Assessment Stage** which determines the visual impacts and significance of the proposed landscape modifications.

4.1 Site Investigation

A field survey was undertaken to inform the landscape and visual impact assessment. During the site visit, photographs were taken from each viewpoint, and the view direction and GPS location captured. The main land-use was documented as well as the nature of the dominant landscape in the vista. In order to represent views of the proposed landscape modification by means of photomontages for assessment purposes, panoramic photographs were also taken from key viewpoints. A photograph from each of the sample points is documented in Annexure A: Field Survey Photograph and Comments, and mapped in the following figure:

Error! Reference source not found.

Table 4: List of Sampling Sites where Landscape and Aesthetic Survey was Conducted.

Point ID	X	Y	Landscape
1	21.06809791	-28.63181399	Road infrastructure (N14 National Road)
2	21.08118076	-28.61986542	Road infrastructure (N14 National Road)
3	21.06386464	-28.62277003	Viticulture, Rural Agriculture
4	21.05358564	-28.60894178	Rural agriculture, arid dry land
5	21.06752109	-28.60243001	Rural agriculture, arid dry land
6	21.03957331	-28.59016814	Proposed PV Project (authorised, un-built)
7	21.01861716	-28.5859351	Rocky outcrop
8	21.02181191	-28.56613816	Rural agriculture, arid dry land
9	21.03132577	-28.56138116	Rural agriculture, arid dry land
10	21.02325047	-28.54757488	Rural agriculture, arid dry land
11	20.99165433	-28.54660894	Rocky outcrop
12	20.99912679	-28.53595322	Pan, arid dry land
13	20.98045678	-28.51139125	Rural agriculture, arid dry land

Survey Date: 21 May 2019

Survey Conditions: Clear.

Atmospheric Conditions: Clear

4.2 Baseline Analysis Stage

In terms of VRM methodology, landscape character is derived from a combination of **scenic quality**, **receptor sensitivity** to landscape change and **distance** from the proposed landscape change. The objective of the analysis is to compile a mapped inventory of the

visual resources found in the receiving landscape, and to derive a mapped Visual Resource sensitivity layer from which to evaluate the suitability of the landscape change.

4.2.1 Scenic Quality

The scenic quality is determined making use of the VRM Scenic Quality Checklist (refer to Table 15 Annexure). Seven scenic quality criteria area scored on a 1 (low) to 5 (high) scale. The scores are totalled and assigned a A (High), B (Moderate) or C (low) based on the following split:

A= scenic quality rating of ≥ 19 ;

B = rating of 12 – 18,

C= rating of ≤ 11

The seven scenic quality criteria are defined below:

- **Land Form:** Topography becomes more of a factor as it becomes steeper, or more severely sculptured.
- **Vegetation:** Primary consideration given to the variety of patterns, forms, and textures created by plant life.
- **Water:** That ingredient which adds movement or serenity to a scene. The degree to which water dominates the scene is the primary consideration.
- **Colour:** The overall colour(s) of the basic components of the landscape (e.g., soil, rock, vegetation, etc.) are considered as they appear during seasons or periods of high use.
- **Scarcity:** This factor provides an opportunity to give added importance to one, or all, of the scenic features that appear to be relatively unique or rare within one physiographic region.
- **Adjacent Land Use:** Degree to which scenery and distance enhance, or start to influence, the overall impression of the scenery within the rating unit.
- **Cultural Modifications:** Cultural modifications should be considered, and may detract from the scenery or complement or improve the scenic quality of an area.

4.2.2 Receptor Sensitivity

Receptor Sensitivity levels are a measure of public concern for scenic quality and assessed making use of the Sensitivity Checklist (refer to Table 16 in the Annexure). Receptor sensitivity to landscape change is determined by rating the following factors in terms of Low to High:

- **Type of Users:** Visual sensitivity will vary with the type of users, e.g. recreational sightseers may be highly sensitive to any changes in visual quality, whereas workers who pass through the area on a regular basis may not be as sensitive to change.
- **Amount of Use:** Areas seen or used by large numbers of people are potentially more sensitive.
- **Public Interest:** The visual quality of an area may be of concern to local, or regional, groups. Indicators of this concern are usually expressed via public controversy created in response to proposed activities.
- **Adjacent Land Uses:** The interrelationship with land uses in adjacent lands. For example, an area within the viewshed of a residential area may be very sensitive,

whereas an area surrounded by commercially developed lands may not be as visually sensitive.

- **Special Areas:** Management objectives for special areas such as Natural Areas, Wilderness Areas or Wilderness Study Areas, Wild and Scenic Rivers, Scenic Areas, Scenic Roads or Trails, and Critical Biodiversity Areas frequently require special consideration for the protection of their visual values.
- **Other Factors:** Consider any other information such as research or studies that include indicators of visual sensitivity.

4.2.3 Distance

Distance from a landscape modification influences the size and clarity of the landscape modification viewing. The Bureau of Land Management defines three distance categories:

- Foreground / Middle ground**, up to approximately 6km, which is where there is potential for the sense of place to change;
- Background areas**, from 6km to 24km, where there is some potential for change in the sense of place, but where change would only occur in the case of very large landscape modifications; and
- Seldom seen areas**, which fall within the Foreground / Middle ground area but, as a result of no receptors, are not viewed or are seldom viewed.

4.2.4 Visual Resource Management Classes

These findings are then submitted to a VRM Matrix in Table 7 below. The VRM Classes are not prescriptive and are used as a guideline to determine the carrying capacity of a visually preferred landscape as a basis for assessing the suitability of the landscape change associated with the proposed project.

Table 5: VRM Class Matrix Table

		VISUAL SENSITIVITY LEVELS								
		High			Medium			Low		
SCENIC QUALITY	A (High)	II	II	II	II	II	II	II	II	II
	B (Medium)	II	III	III/IV *	III	IV	IV	IV	IV	IV
	C (Low)	III	IV	IV	IV	IV	IV	IV	IV	IV
DISTANCE ZONES		Fore/middle ground	Background	Seldom seen	Fore/middle ground	Background	Seldom seen	Fore/middle ground	Background	Seldom seen

* If adjacent areas are **Class III** or lower, assign **Class III**, if higher, assign **Class IV**

The visual objectives of each of the classes are listed below:

- The Class I objective is to preserve the existing character of the landscape, the level of change to the characteristic landscape should be very low, and must not attract attention. Class I is assigned when a decision is made to maintain a natural landscape;
- The Class II objective is to retain the existing character of the landscape and the level of change to the characteristic landscape should be low. The proposed development may be seen, but should not attract the attention of the casual observer, and should repeat the basic elements of form, line, colour and texture found in the predominant natural features of the characteristic landscape;
- The Class III objective is to partially retain the existing character of the landscape, where the level of change to the characteristic landscape should be moderate. The proposed development may attract attention, but should not dominate the view of the casual observer, and changes should repeat the basic elements found in the predominant natural features of the characteristic landscape; and
- The Class IV objective is to provide for management activities that require major modifications of the existing character of the landscape. The level of change to the landscape can be high, and the proposed development may dominate the view and be the major focus of the viewer's (s') attention without significantly degrading the local landscape character.

4.2.5 Key Observation Points

During the Baseline Inventory Stage, Key Observation Points (KOPs) are identified. KOPs are defined by the Bureau of Land Management as the people (receptors) located in strategic locations surrounding the property that make consistent use of the views associated with the site where the landscape modifications are proposed. These locations are important in terms of the VRM methodology, which requires that the Degree of Contrast (DoC) that the proposed landscape modifications will make to the existing landscape be measured from these most critical locations, or receptors, surrounding the property. To define the KOPs, potential receptor locations were identified in the viewshed analysis, and screened, based on the following criteria:

- Angle of observation;
- Number of viewers;
- Length of time the project is in view;
- Relative project size;
- Season of use;
- Critical viewpoints, e.g. views from communities, road crossings; and
- Distance from property.

4.3 Assessment and Impact Stage

The analysis stage involves determining whether the potential visual impacts from proposed surface-disturbing activities or developments will meet the management objectives established for the area, or whether design adjustments will be required. This requires a contrast rating to assess the expected Degree of Contrast the proposed landscape modifications would generate within the receiving landscape in order to define the Magnitude of the impact.

4.3.1 Contrast Rating

The contrast rating is undertaken to determine if the VRM Class Objectives are met. The suitability of landscape modification is assessed by comparing and contrasting existing receiving landscape to the expected contrast that the proposed landscape change will generate. This is done by evaluating the level of change to the existing landscape by assessing the line, colour, texture and form, in relation to the visual objectives defined for the area. The following criteria are utilised in defining the DoC:

- **None:** The element contrast is not visible or perceived.
- **Weak:** The element contrast can be seen but does not attract attention.
- **Moderate:** The element contrast begins to attract attention and begins to dominate the characteristic landscape.
- **Strong:** The element contrast demands attention, will not be overlooked, and is dominant in the landscape.

As an example, in a Class I area, the visual objective is to preserve the existing character of the landscape, and the resultant contrast to the existing landscape should not be notable to the casual observer and cannot attract attention. In a Class IV area example, the objective is to provide for proposed landscape activities that allow for major modifications of the existing character of the landscape. Based on whether the VRM objectives are met, mitigations, if required, are defined to avoid, reduce or mitigate the proposed landscape modifications so that the visual impact does not detract from the surrounding landscape sense of place.

Based on the findings of the contrast rating, the Magnitude of the Landscape and Visual Impact Assessment is determined.

4.3.2 *Photo Montages*

As a component in this contrast rating process, visual representation, such as photo montages are vital in large-scale modifications, as this serves to inform Interested & Affected Parties and decision-making authorities of the nature and extent of the impact associated with the proposed project/development. There is an ethical obligation in this process, as visualisation can be misleading if not undertaken ethically. In terms of adhering to standards for ethical representation of landscape modifications, VRMA subscribes to the Proposed Interim Code of Ethics for Landscape Visualisation developed by the Collaborative for Advanced Landscape Planning (CALP). (Sheppard D. S., 2000) This code states that professional presenters of realistic landscape visualisations are responsible for promoting full understanding of proposed landscape changes, providing an honest and neutral visual representation of the expected landscape, by seeking to avoid bias in responses and demonstrating the legitimacy of the visualisation process. Presenters of landscape visualisations should adhere to the principles of:

- Access to Information
- Accuracy
- Legitimacy
- Representativeness
- Visual Clarity and Interest

The Code of Ethical Conduct states that the presenter should:

- Demonstrate an appropriate level of qualification and experience.
- Use visualisation tools and media that are appropriate to the purpose.
- Choose the appropriate level of realism.
- Identify, collect and document supporting visual data available for, or used in, the visualisation process.
- Conduct an on-site visual analysis to determine important issues and views.
- Seek community input on viewpoints and landscape issues to address in the visualisations.
- Provide the viewer with a reasonable choice of viewpoints, view directions, view angles, viewing conditions and timeframes appropriate to the area being visualised.
- Estimate and disclose the expected degree of uncertainty, indicating areas and possible visual consequences of the uncertainties.
- Use more than one appropriate presentation mode and means of access for the affected public.
- Present important non-visual information at the same time as the visual presentation, using a neutral delivery.
- Avoid the use, or the appearance of, 'sales' techniques or special effects.
- Avoid seeking a particular response from the audience.
- Provide information describing how the visualisation process was conducted and how key decisions were taken (Sheppard D. S., 2000)

4.3.3 Impact Assessment Criteria

Visual impact significance impacts were defined making use of the DEA&DP Guideline for involving Visual and Aesthetic Specialists in EIA processes (Oberholzer, 2005).

Table 6: Visual Impact Assessment Criteria Table

Extent	Geographical area of influence. Site Related (S): <i>extending only as far as the activity</i> Local (L): <i>limited to immediate surroundings.</i> Regional (R): <i>affecting a larger metropolitan or regional area</i> National (N): <i>affecting large parts of the country</i> International (I): <i>affecting areas across international boundaries</i>
Duration	Predicted lifespan Short term (S): <i>duration of the construction phase.</i> Medium term (M): <i>duration for screening vegetation to mature.</i> Long term (L): <i>lifespan of the project.</i> Permanent (P): <i>where time will not mitigate the visual impact.</i>
Magnitude	Magnitude of impact on views, scenic or cultural resources Low (L): <i>where visual and scenic resources are not affected.</i> Moderate (M): <i>where visual and scenic resources are affected</i> High (H): <i>where scenic and cultural resources are significantly affected.</i>
Probability	Degree of possible visual impact: Improbable (I): <i>possibility of the impact occurring is very low.</i> Probable (P): <i>distinct possibility that the impact will occur.</i> Highly probable (HP): <i>most likely that the impact will occur.</i> Definite (D): <i>impact will occur regardless of any prevention measures.</i>

Significance	<p>A synthesis of nature, duration, intensity, extent and probability</p> <p>Low (L): will not have an influence on the decision.</p> <p>Moderate (M): should have an influence on the decision unless it is mitigated.</p> <p>High (H): would influence the decision regardless of any possible mitigation.</p>
---------------------	--

5 BASELINE VISUAL INVENTORY ASSESSMENT

Landscape character is defined by the U.K. Institute of Environmental Management and Assessment (IEMA) as the 'distinct and recognisable pattern of elements that occurs consistently in a particular type of landscape, and how this is perceived by people. It reflects particular combinations of geology, landform, soils, vegetation, land use and human settlement'. It creates the specific sense of place or essential character and 'spirit of the place' (IEMA, 2002). This section of the VIA identified the main landscape features that define the landscape character, as well as the key receptors that make use of the visual resources created by the landscape.

5.1 Landscape Context

The following key landmarks, falling within the proposed project viewshed, were identified during the desktop assessment:

- Rural agricultural / viticultural landscape associated with the Orange River Valley.
- The N14 National Road.
- The Khi Solar One Concentrated Solar Power facility.
- Sand dune features and rocky hills.

The main landscape feature in the area is the Orange River. This landscape includes the river and residential and agricultural developments along the valley. Landform is fairly undulating and hilly, with rocky outcrops scattered along the banks where the river has eroded down creating a slight valley. Due to the proximity to water, vegetation is more prolific along the riverbank and is predominantly associated with cultivated vineyards and small-scale agriculture, although there are some larger residential developments that do detract from the overall landscape character. The cultural landscapes of this area are primarily associated with agricultural activities and vineyards on the more fertile lands along the Orange River and they add value to the overall vista. The types of receptors making use of the Orange River visual resources are mostly related to agriculture, tourism and residential. It is likely that maintaining the existing sense of place would be important to these receptors. The area is also strongly associated with the 'vineyard' cultural landscape and hence attractive to landscape based tourism.

In addition, the surrounding areas of topographic visual resources and rocky outcrops enhance the regional landscape character. Located to the west of the property is a long northwest to southeast aligned sand dune that creates an interesting linear landscape feature and should be regarded as an important local landscape feature. The arid nama-karoo landscape that contrasts with the cultivated areas along the Orange River, significantly add value to the regional landscape character. As a result of this, the area along the Orange River is also important as a tourist destination.

The main access route in the area is the N14, which is routed to the south of the proposed development property. This road is an important tourist view corridor linking Upington in the

northeast, to Springbok in the southwest. The N14 is also used to access the Augrabies Falls National Park, located approximately 60km to the west of the property. For these reasons, consideration of scenic resources within the project ZVI that could add local tourist value, should be protected.

A factor that is increasingly influencing the regional landscape character is the recognition of the area around Upington as an important solar renewable energy location. The property is situated within visual proximity to the Khi Solar One Concentrated Solar Power (CSP) tower project, located 6km to the east of the property. This creates a large vertical feature in the landscape. It is likely that the area will become a solar energy hub as this area falls within the REDZ 7 renewable energy development zone. Other Solar PV projects are also located to the east of the property, as well as on the southern portions of the property.

5.1.1 Protected Areas

No protected areas are located within the Foreground / Mid-ground areas which is the expected Zone of Visual Influence of the project. The nearest protected area being Augrabies National Park located approximately 60km to the west of the property.

5.1.2 Topography

Topography is a crucial factor in determining the landscape as the fall of the land often defines mountain and river features. To better understand the topography, a regional Digital Elevation Model (DEM) was generated using NASA ASTER 90m DEM data (NASA, 2009). The data is generalised, and although will not reflect smaller topographic features, it is useful in understanding the broader topographical landscape character. A regional Digital Elevation Map is also useful to determine general drainage of the property. To assist in the understanding of the elevation map, a graphical representation of the terrain was also implemented with lines running through the study area. These maps can be viewed in:

Figure 23: Bloemsmond PV Connector Grid routing topographic profile graphs.
Figure 24: Bloemsmond PV Collector Grid routing topographic profile graphs.

Bloemsmond PV Connector Grid

The profiles lines indicate that the terrain is mainly flat but does include some prominence that is likely to extend the project ZVI.

Bloemsmond PV Collector Grid

The profiles lines indicate that the terrain is flat and as such the visual extent of the proposed landscape modification would not be expanded by the power line being routed over prominent terrain.

5.1.3 Steep Slopes

Steep slope areas can add to the significance of the topographic features in the landscape in terms of relief, mountain and hill areas, and vegetation variety. Steep slopes can also pose adverse risks in terms of soil erosion and excessive cut and fills required for new road access. A slopes analysis was undertaken to determine steep slopes within the project area

making use of ASTER DEM data. The slopes analysis undertaken for the assessment found that no steep slope areas were located on either of the proposed development footprints.

5.1.4 Landuse and Land Cover

Landuse and land cover are crucial factors in determining landscape character, especially regarding the Visual Absorption Capacity (VAC) of the landscapes. Oberholzer defines VAC as the potential of the landscape to conceal the proposed project (Oberholzer, 2005). A key landuse in the region is that of renewable energy projects. The following map depicts the proposed Bloemsmond solar projects, as well as the surrounding solar projects (authorised unbuilt, authorised under construction and existing development).

Figure 29: Renewable Energy Cumulative Projects maps.

According to the South African National Biodiversity Institute (SANBI) National Vegetation Website and Mucina and Rutherford (2006), one main vegetation type on the site, Bushmanland Arid Grassland, has been identified. The botanical significance of this would need to be defined, with any areas of botanical importance included as visually sensitive areas. The lack of vegetation in this arid region landscape, reduces the visual absorption capacity to some degree. However, the built nature of the existing Khi Solar One Concentrated Solar Power (CSP), authorised but unbuilt PV and future CSP (as indicated in the regional landscape character description and mapping), are likely to change the landscape character of the portions of the property to the east, which are in close visual proximity to the existing solar projects.

Other land uses within the region are agricultural in nature, and include viticulture along the Orange River, dry-land grazing of cattle and goats, as well as game farming which is taking place on the property.

5.2 Project Zone of Visual Influence

The visible extent, or viewshed, is “the outer boundary defining a view catchment area, usually along crests and ridgelines” (Oberholzer, 2005). The viewshed analysis is undertaken to determine the extent to which the proposed landscape change would be visible to the surrounding areas. This mapping exercise is used to determine the human receptors located within the project zone of visual influence, as well as to define the significant visual resources that could be influenced by the proposed landscape modification.

A viewshed analysis was undertaken from the proposed routing at a specified height above ground level to define the extent of the possible visual influence of the proposed landscape modification (Refer to Table 7 below). A Digital Elevation Model was generated, making use of open source NASA ASTER Digital Elevation Model data (NASA, 2009). The extent of the viewshed analysis is restricted to a defined distance as the project ZVI is unlikely to extend beyond this distance due to atmospheric influences. The maps are informative only as visibility tends to diminish exponentially with distance, which is well recognised in visual analysis literature (Hull & Bishop, 1988).

Table 7: Proposed Project Heights Table

Proposed Activity	Approx. Maximum Height above ground level (m)	Viewshed Extent (km)
Power line pylons	32	4

It is important to note that the terrain model ***excludes vegetation and structural screening*** which could influence the extent of the visibility. The receptor height value was set at 1.5m above ground to represent best international practice for receptor height. The approximate viewshed/s are depicted in the following maps:

Figure 25: Bloemsmond Connector Alternative West Viewshed Map
Figure 26:
Figure 27: Bloemsmond Collector Alternative North Viewshed Map
Figure 28: Bloemsmond Collector Alternative South Viewshed Map

Bloemsmond PV Connector Alternative West Viewshed

The viewshed for the Bloemsmond PV Connector Alternative West is defined as Localised and results in Low exposure to sensitive receptors. Although the terrain is mainly flat, there are some undulations and some prominence. The viewshed zone of visual influence does include natural features to the west of the routing that do add value to the landscape character. As this area does include game farming that adds value to the agri-tourism economy, these visual resources should be protected from visual intrusion.

Bloemsmond PV Connector Alternative East Viewshed

The viewshed for the Bloemsmond PV Connector Alternative East is defined as Localised and results in Low exposure to sensitive receptors. Although the terrain is mainly flat, there are some undulations and some prominence. The viewshed zone of visual influence does not include natural features to the west of the routing that do add value to the landscape character. The routing is in close proximity to the existing PV projects that increase the area’s VAC levels.

Bloemsmond PV Collector Alternative North Viewshed

The viewshed for the Bloemsmond PV Collector Alternative North is defined as Localised and results in Low exposure to sensitive receptors. Although the terrain is mainly flat and is located in clear view of the existing Khi Solar 1 CSP and the new power line currently under construction. The viewshed zone of visual influence does not include natural features to the west of the routing that do add value to the landscape character. The routing is in close proximity to the existing PV projects that increase the area’s VAC levels.

Bloemsmond PV Collector Alternative South Viewshed

The viewshed for the Bloemsmond PV Collector Alternative South is defined as Localised and results in Low exposure to sensitive receptors. Although the terrain is mainly flat. The viewshed zone of visual influence does include the N14 National Road. As this area is important for tourism, these visual resources should be protected from visual intrusion.

5.3 Receptors and Key Observation Points

As defined in the methodology, KOPs are defined by the Bureau of Land Management as the people (receptors) located in strategic locations surrounding the property that make consistent use of the views associated with the site where the landscape modifications are proposed.

As identified in the viewshed mapping exercise, neither of the proposed development zones of visual influence include sensitive receptors. This is due to the remoteness of the northern sections of the routing, the higher visual absorption capacity created by the existing powerlines, as well as the slight undulation of the terrain that reduces clear visibility. However, the zone of visual influence does include low hills and rocky outcrops, and low dune-landscape features to the west of the property, which have been identified as scenic resources that add to the local sense of place. Although these areas do not have any receptors, they could be used for tourism in the future and as such, would need to be taken into consideration in the assessment of landscape impacts.

The viewshed analysis found that while the southern portions of the power line routing may be visible, they would be viewed as background elements from receptors located on the N14 or the agricultural areas to the south of the road. Existing power lines in the vista increase the VAC levels and visual intrusion is thus likely to be low.

6 VISUAL RESOURCE MANAGEMENT

In terms of the VRM methodology, landscape character is derived from a combination of scenic quality, receptor sensitivity to landscape change, and distance of the proposed landscape modification from key receptor points. Making use of the key landscape elements defined in the landscape contextualisation sections above, landscape units are defined which are then rated to derive their intrinsic scenic value, as well as how sensitive people living in the area would be to changes taking place in these landscapes.

6.1 Physiographic Rating Units

The Physiographic Rating Units are the areas within the project development area that reflect specific physical and graphic elements that define a particular landscape character. These unique landscapes within the project development areas are rated to assess the scenic quality and receptor sensitivity to landscape change, which is then used to define a Visual Resource Management Class for each of the site's unique landscape/s. The exception are Class I areas, where the rating is determined based on national and international policy / best practice and landscape significance and as such are not rated for scenic quality and receptor sensitivity to landscape change.

The landscape character of the study area was surveyed to identify areas of similar land use and landscape character (Physiographic Rating Units). The current land use is agricultural, with no man made features other than agricultural fences and reservoirs associated with low intensity grassland cattle farming. During the site visit, two main broad-brush landscapes

were identified, these being Bushmanland Arid Grassland and the Shallow Drainage Lines. The drainage line could be ecologically / or hydrologically significant and are defined as Class I (subject to the Ecological / surface water hydrology specialist's findings).

Table 8: Bloemsmond PV 3 to 5 Collector Grid Routing Scenic Quality and Receptor Sensitivity Rating Table.

Site Alt.	Landscape Rating Units	Scenic Quality									Receptor Sensitivity						VRM	
		A= scenic quality rating of ≥19; B = rating of 12 – 18, C= rating of ≤11									H = High; M = Medium; L = Low							
	Type	Landform	Vegetation	Water	Colour	Scarcity	Adjacent Landscape	Cultural Modifications	Sum	Rating	Type of Users	Amount of Use	Public Interest	Adjacent Land Uses	Special Areas	Rating	Inventory Class	Management Class
Both Routing Alignments	Drainage lines	(Class I is not rated) Both routings cross drainage lines and possible ecologically sensitive vegetation. Should the relevant specialists define significant areas, these areas need to be excluded.															I	
	Ecologically sensitive vegetation																	
Preferred (Eastern Routing)	Bushmanland Arid Grassland	1	2	0	3	2	2	1	11	C	L	L	L	L	L	L	IV	IV
Alternative (Western Routing)	Bushmanland Arid Grassland	1	2	0	3	2	4	1	13	B	L	L	M	M	L	ML	IV	III

The **Scenic Quality** scores are totalled and assigned an A (High scenic quality), B (Moderate scenic quality) or C (Low scenic quality) category based on the following split: A= scenic quality rating of ≥19; B = rating of 12 – 18, C= rating of ≤11 (USDl., 2004).

Receptor Sensitivity levels are a measure of public concern for scenic quality. Receptor sensitivity to landscape change is determined by rating the key factors relating to the perception of landscape change in terms of Low to High.

Table 9: Bloemsmond PV 3 to 5 Connector Grid Routing Scenic Quality and Receptor Sensitivity Rating Table.

Site Alt.	Landscape Rating Units	Scenic Quality									Receptor Sensitivity						VRM	
		A= scenic quality rating of ≥ 19 ; B = rating of 12 – 18, C= rating of ≤ 11									H = High; M = Medium; L = Low							
	Type	Landform	Vegetation	Water	Colour	Scarcity	Adjacent Landscape	Cultural Modifications	Sum	Rating	Type of Users	Amount of Use	Public Interest	Adjacent Land Uses	Special Areas	Rating	Inventory Class	Management Class
Both Routing Alignments	Drainage lines	(Class I is not rated) Both routings cross drainage lines and possible ecologically sensitive vegetation. Should the relevant specialists define significant areas, these areas need to be excluded.																I
	Ecologically sensitive vegetation																	
Northern Routing	Bushmanland Arid Grassland	1	2	0	3	2	2	1	11	C	L	L	L	L	L	L	IV	IV
Southern Routing	Bushmanland Arid Grassland	1	2	0	3	2	2	1	11	C	L	M	M	M	L	M	IV	III

The **Scenic Quality** scores are totalled and assigned an A (High scenic quality), B (Moderate scenic quality) or C (Low scenic quality) category based on the following split: A= scenic quality rating of ≥ 19 ; B = rating of 12 – 18, C= rating of ≤ 11 (USDl., 2004).

Receptor Sensitivity levels are a measure of public concern for scenic quality. Receptor sensitivity to landscape change is determined by rating the key factors relating to the perception of landscape change in terms of Low to High.

6.2 Scenic Quality Assessment

6.2.1 Bloemsmond PV 3 to 5 Collector Routings (Preferred Eastern Routing)

Along these three routings, the landform is rated *Low* because of its predominantly flat nature with few interesting landscape features. Vegetation is mainly grasslands type and rated *Medium to Low* as there is little variety or contrast with no evidence of water. There are some interesting colours provided by the grasses contrasting with red sands and reddish background hills. Colour as an element is defined as *Medium*. Adjacent scenery is rated *Low* as the routing is closer in visual proximity to the PV plants currently under construction, as well as the CSP. Scarcity factor is rated *Low*, as this type of scenery is fairly widespread in the area. Cultural modifications introduce no discordant elements into the vista, and add to the rural agricultural sense of place. The overall scenic quality score is 11, and a VRM category C scenic quality rating was defined for the eastern preferred routings.

6.2.2 Bloemsmond PV 3 to 5 Collector Routings (Alternative Western Routing)

As the routing is located in a similar landscape to the eastern routings, the ratings for scenic quality are similar. Along these two routings, the landform is rated *Low* because of its predominantly flat nature with few interesting landscape features. Vegetation is mainly grasslands type and rated *Medium to Low* as there is little variety or contrast with no evidence of water. There are some interesting colours provided by the grasses contrasting with red sands and reddish background hills. Colour as an element is defined as *Medium*. Adjacent scenery to the west of the property adds value due to the “Rooikoppe” (small hill features) in the background. Scarcity factor is rated *Low*, as this type of scenery is fairly widespread in the area and cultural modifications introduce no discordant elements into the vista, and add to the rural agricultural sense of place. The overall scenic quality score is 13, and a VRM category B scenic quality rating was defined for the eastern preferred routings.

6.2.3 Bloemsmond PV 3 to 5 Connector Routings (Northern Routing)

This routing aligns to the south of the PV projects currently under construction as well as the existing Khi Solar One CSP, the landform is rated *Low* because of its predominantly flat nature with few interesting landscape features. Vegetation is mainly grasslands type and rated *Medium to Low* as there is little variety or contrast with no evidence of water. There are some interesting colours provided by the grasses contrasting with red sands and colour as an element is defined as *Medium*. Adjacent scenery is rated *Low* as the routing is closer in visual proximity to the PV plants currently under construction, as well as the CSP. Scarcity factor is rated *Low*, as this type of scenery is fairly widespread in the area. Cultural modifications introduce no discordant elements into the vista, and add to the rural agricultural sense of place. The overall scenic quality score is 11, and a VRM category C scenic quality rating was defined for the eastern preferred routings.

6.2.4 Bloemsmond PV 3 to 5 Connector Routings (Southern Routing)

The routing is located further to the south (closer to the N14 National Highway), but has a landscape that is similar to the northern routing. The landform is rated *Low* because of its predominantly flat nature with few interesting landscape features. Vegetation is mainly grasslands type and rated *Medium to Low* as there is little variety or contrast with no evidence of water. There are some interesting colours provided by the grasses contrasting with red sands and colour as an element is defined as *Medium*. Adjacent scenery is rated *Low* as there are no scenic resources and the routing is in close proximity to the existing

88kV power line. Scarcity factor is rated *Low*, as this type of scenery is fairly widespread in the area and cultural modifications introduce no discordant elements into the vista, and add to the rural agricultural sense of place. As with the northern routing, the overall scenic quality score is 11, and a VRM category C scenic quality rating was defined for the eastern preferred routings.

6.3 Receptor Sensitivity Assessment

6.3.1 Bloemsmond PV 3 to 5 Collector Routings (Preferred Eastern Routing)

For the **Bushmanland Arid Grassland** landscape defined along this routing, sensitivity of the type of users (agricultural farmers) is likely to be *Low*, as the area is seldom seen and isolated, with the amount of use defined as *Low*. This type of area is fairly common within the region and is not formally protected as a conservation area, hence public interest is likely to be *Low*. The importance of the maintenance of visual quality to adjacent land users would be *Low* as the property to the east is strongly associated with PV and CSP development and there are no tourist-type activities taking place. The overall sensitivity rating for this routing was defined as *Low*.

6.3.2 Bloemsmond PV 3 to 5 Collector Routings (Alternative Western Routing)

For the **Bushmanland Arid Grassland** landscape defined along this routing, sensitivity of the type of users (agricultural farmers) is likely to be *Low*, as the area is seldom seen and isolated, with the amount of use defined as *Low*. This type of area is fairly common within the region and is not formally protected as a conservation area, hence public interest is likely to be *Low*. The importance of the maintenance of visual quality to adjacent land users would be *Moderate* as the areas to the west of the property does have scenic resources that include rocky outcrops and red dunes fields. Although these scenic resources could be used for tourism, there are currently no tourist-type activities taking place. The overall sensitivity rating was defined as *Moderate to Low*.

6.3.3 Bloemsmond PV 3 to 5 Connector Routings (Northern Routing)

For the **Bushmanland Arid Grassland** landscape defined along this routing, sensitivity of the type of users (agricultural farmers) is likely to be *Low*, as the area is seldom seen and isolated, with the amount of use defined as *Low*. This type of area is fairly common within the region and is not formally protected as a conservation area, hence public interest is likely to be *Low*. The importance of the maintenance of visual quality to adjacent land users would be *Low* as the routing is visually associated with PV and CSP development to the north, and there are no tourist-type activities taking place. The overall sensitivity rating for this routing was defined as *Low*.

6.3.4 Bloemsmond PV 3 to 5 Connector Routings (Southern Routing)

For the **Bushmanland Arid Grassland** landscape defined along this routing, sensitivity of the type of users (agricultural farmers) is likely to be *Low*, as the area is seldom seen and isolated, with the amount of use defined as *Low*. This type of area is fairly common within the region and is not formally protected as a conservation area, hence public interest is likely to be *Low*. The importance of the maintenance of visual quality to adjacent land users would be *Moderate* as the routing does fall within the viewshed of the N14 national Highway located approximately 1.7km to the south. As there are currently no tourist-type activities taking place, the overall sensitivity rating was defined as *Moderate*.

6.4 Visual Resources Management Classes

The BLM methodology defines four Classes that represent the relative value of the visual resources of an area and are defined making use of the VRM Matrix (Table 5):

- i. **Classes I and II** are the most valued
- ii. **Class III** represent a moderate value
- iii. **Class IV** is of least value

The Classes are not prescriptive and are utilised as a guideline to determine the carrying capacity of a visually preferred landscape that is utilised to assess the suitability of the landscape change associated with the proposed project. The Visual Inventory Classes are defined using the matrix below and with motivation, can be adjusted to Visual Resource Management Classes which take zoning and regional planning into consideration if applicable. The VRM ratings summary is provided in Table 8.

6.4.1 VRM Class I

The following physiographic landscapes were assigned a Class I Visual Objective:

Drainage Lines (Subject to the Ecological / surface water hydrology specialist's findings)
Significant vegetation (Subject to the Ecological / surface water hydrology specialist's findings)

The Class I objective is to preserve the existing character of the landscape, the level of change to the characteristic landscape should be very low, and must not attract attention. Class I is assigned when a decision is made to maintain a natural landscape.

These areas should be excluded from the development footprint, should they be defined by the Ecological / surface water hydrology specialist as significant.

6.4.2 VRM Class II

Not applicable

Due to the flat terrain with no significant topographic features, no Class II landscapes were defined.

6.4.3 VRM Class III

Bushmanland Arid Grassland - Bloemsmond PV 3 to 5 Collector Grid (Alternative Western Routings)
Bushmanland Arid Grassland - Bloemsmond PV 3 to 5 Connector Grid (Southern Routing)

Due to the proximity of the Alternative Collector Grid routing that is aligned along the western boundary of the property where there are scenic resources, a Class III visual objective is assigned to this routing.

Due to the closer proximity of the Southern Connector routing to the N14 national Highway, which would include tourist related receptors, this routing is also assigned a Class III visual objective.

The Class III objective is to partially retain the existing character of the landscape, where the level of change to the characteristic landscape should be moderate. The proposed development may attract attention, but should not dominate the view of the casual observer, and changes should repeat the basic elements found in the predominant natural features of the characteristic landscape.

6.4.4 VRM Class IV

The following physiographic landscapes were assigned a Class IV Visual Objective:

Bushmanland Arid Grassland - Bloemsmond PV 3 to 5 Collector Grid (Eastern Preferred Western Routings)
Bushmanland Arid Grassland - Bloemsmond PV 3 to 5 Connector Grid (Northern Routing)

Due to the seldom seen nature of these routing, with limited scenic resources and closer proximity to existing PV and CSP projects (and associated power lines), a Class IV visual objective is assigned to the grassland portions of these two routings. The Class IV objective is to provide for management activities that require major modifications of the existing character of the landscape but working within international best practice for landscape modification management and restoration.

7 IMPACT ASSESSMENT

As indicated in the methodology, the contrast rating is undertaken to determine if the VRM Class Objectives are met. This informs the impact ratings for Visual Impacts. The suitability of landscape modification is assessed by comparing and contrasting existing receiving landscape to the expected contrast that the proposed landscape change will generate. This is done by evaluating the level of change to the existing landscape by assessing the line, colour, texture and form, in relation to the visual objectives defined for the area. Due to the remoteness of the locality, no significant receptors were identified within the project Zone of Visual Influence. As such, a contrast rating exercise was not undertaken, and **only Landscape impacts will be assessed.**

7.1 Power Line Landscape and Visual Impacts

The following landscape impacts were identified as having a likelihood of occurring during the construction and operation of the proposed grid connection infrastructure.

- Construction Phase
 - Loss of *site* landscape character from the removal of vegetation for the construction road, the construction of the monopole structures and cables;
 - Possible soil erosion from temporary roads crossing drainage lines;
 - Windblown litter from the laydown and construction sites.
- Operation Phase
 - Massing effect on the landscape from a large-scale modification;
 - On-going soil erosion;
 - On-going windblown dust.
- Decommissioning Phase
 - Movement of vehicles and associated dust;
 - Windblown dust from the disturbance of cover vegetation / gravel.
- Cumulative Impacts
 - A long-term change in land use setting a precedent for power line routings relating to future solar energy projects in the area.
 - Potential loss of scenic resources located on the adjacent property to the west that could influence future eco-tourism opportunities in this area.

7.1.1 Bloemsmond PV Preferred Connector Impacts (Eastern Routing)

Table 10: Bloemsmond PV Connector Alt East Impacts Ratings Table

Nature: Change of local and surrounds visual resources due to the construction and operation of the proposed (32m high) monopole structures,		
	Without mitigation	With mitigation
Extent	Local	Local
Duration	Long-term	Long-term
Magnitude	Medium	Low
Probability	Probable	Probable
Significance	Medium to Low	Low
Status (positive or negative)	Negative	Negative
Reversibility	Possible	Possible
Irreplaceable loss of resources?	No	No
Can impacts be mitigated?	Yes	
Impact Motivation		
<ul style="list-style-type: none"> • The eastern corridors do not contain any significant visual resources or topographic prominence. • The area is remote with limited receptors and is located within the vicinity of the already authorised Bloemsmond PV 1 & 2 which does include power lines that 		

will increase the visual absorption capacity of the locality once constructed.
<p>Mitigation:</p> <ul style="list-style-type: none"> The laydown area should be sited away from the N14 road as well as the viticulture areas, and preferably not located on portions of the study area that have local prominence. Dust management during the lifetime of the project.
<p>Cumulative impacts:</p> <ul style="list-style-type: none"> Multiple power lines routings can create negative massing effects that sterilise landscape quality. Routings should be aligned as close as possible to other power line routing or road access lines.
<p>Residual Risks:</p> <ul style="list-style-type: none"> With the associated power line and vehicle access located away from the western scenic resources, the low profile and prominence of the PV panels would result in a low intensity landscape impact and are not likely to degrade the scenic resource.

7.1.2 Bloemsmond PV Alternative Connector Impacts (Western Routing)

Table 11: Bloemsmond PV Connector Alt West Impacts Ratings Table

Nature: Change of local and surrounds visual resources due to the construction and operation of the proposed (32m high) monopole structures.		
	Without mitigation	With mitigation
Extent	Local	Local
Duration	Long-term	Long-term
Magnitude	High	High
Probability	Probable	Probable
Significance	Medium to High	Medium to High
Status (positive or negative)	Negative	Negative
Reversibility	Possible	Possible
Irreplaceable loss of resources?	No	No
Can impacts be mitigated?	Yes	
Impact Motivation		
<ul style="list-style-type: none"> The proposed study area does not contain any significant visual resources. The area is remote with limited receptors and is located near to the already authorised Bloemsmond PV 1 & 2. Visual intrusion is likely to be into the western areas where there are natural features that do create visual resources. 		

<p>Mitigation:</p> <ul style="list-style-type: none"> • The laydown area should be sited away from the N14 road as well as the viticulture areas, and preferably not located on portions of the site that have local prominence. • Dust management during the lifetime of the project.
<p>Cumulative impacts:</p> <ul style="list-style-type: none"> • From a cumulative perspective, locating power line and road access to the west in close proximity to the western scenic resources, could reduce the potential for future eco-tourism opportunities in this area. Given that there is game farming taking place in the area, this is a possibility. For this reason, the western corridors are not preferred.
<p>Residual Risks:</p> <ul style="list-style-type: none"> • With the associated power line and vehicle access located away from the western scenic resources, a low intensity landscape impact would result which is not likely to degrade the scenic resource.

7.1.3 Bloemsmond PV Northern Collector Impacts

Table 12: Northern Collector Grid Impacts Ratings Table

Nature: Change of local and surrounds visual resources due to the construction and operation of the proposed (32m high) monopole structures.		
	Without mitigation	With mitigation
Extent	Local	Local
Duration	Long-term	Long-term
Magnitude	Medium	Low
Probability	Probable	Probable
Significance	Medium to Low	Low
Status (positive or negative)	Negative	Negative
Reversibility	Possible	Possible
Irreplaceable loss of resources?	No	No
Can impacts be mitigated?	Yes	
<p>Impact Motivation</p> <ul style="list-style-type: none"> • The preference is to have the power line routings aligned with the current Dyasonsklip and Sirius Power Line currently under construction. This would reduce construction and maintenance impacts associated with creating new roads for the power line construction and long-term maintenance. 		
<p>Mitigation:</p> <ul style="list-style-type: none"> • Dust management during the lifetime of the project. • Careful management of long-term impacts where the route passes over shallow 		

drainage lines.
<p>Cumulative impacts:</p> <ul style="list-style-type: none"> From a cumulative perspective, the location of the power line and road access to the north would reduce exposure to south scenic resources that have the potential for future eco-tourism opportunities along the N14 National Road.
<p>Residual Risks:</p> <ul style="list-style-type: none"> If the associated power line and vehicle access is located away from the southern N14 scenic resources, a low intensity landscape impact is more likely, posing less threat of the degradation of the scenic resources. On decommissioning, the limited footprint required for the construction of the roads, would allow for effective rehabilitation of the impacted area back to the current agricultural land use and associated rural sense of place.

7.1.4 Bloemsmond PV Southern Collector Impacts

Table 13: Southern Collector Grid Impacts Ratings Table

Nature: Change of local and surrounds visual resources due to the construction and operation of the proposed (32m high) monopole structures.		
	Without mitigation	With mitigation
Extent	Local	Local
Duration	Long-term	Long-term
Magnitude	Medium	Medium
Probability	Probable	Probable
Significance	Medium to High	Medium to High
Status (positive or negative)	Negative	Negative
Reversibility	Possible	Possible
Irreplaceable loss of resources?	No	No
Can impacts be mitigated?	Yes	
<p>Impact Motivation</p> <ul style="list-style-type: none"> The preference is to have the power line routings aligned with the current Dyasonsklip and Sirius Power Line currently under construction (preference for the northern routing alternative a). The more southern routing, while not a fatal flaw, does create a corridor of no-go land between the Dyasonsklip and Sirius Power Line and the Southern Collector Grid corridor (alternative b). 		
<p>Mitigation:</p> <ul style="list-style-type: none"> Dust management during the lifetime of the project. Careful management of long-term impacts where the route passes over shallow drainage lines. 		

Cumulative impacts:

- From a cumulative perspective, the two kilometre buffer between the power line and the N14 National Road would reduce exposure to scenic resources along the route that have potential for future eco-tourism opportunities. Cumulative impacts from the route are thus rated Low.

Residual Risks:

- If the associated power line and vehicle access is located away from the southern N14 scenic resources, a low intensity landscape impact is more likely, posing less threat of the degradation of the scenic resources.. Although residual risks to scenic resources are Low, there is a visual preference for the northern route due to the routing being further from the N14 .

8 ENVIRONMENTAL MANAGEMENT PLAN RECOMMENDATIONS

8.1 Construction Phase

During the construction phase heavy vehicles, components, equipment and construction crews will frequent the area and may cause, at the very least, a cumulative visual nuisance to landowners and residents in the area as well as to road users. The proposed project is semi-industrial in nature and would be located in an agricultural area with limited man made infrastructure. The following actions should be implemented during the construction phase:

- Adopt responsible construction practices aimed at containing the construction activities to specifically demarcated areas thereby limiting the removal of natural vegetation to the minimum.
- Limit access to the construction areas to existing access roads.
- Rehabilitate all disturbed areas to acceptable visual standards as soon as possible after construction is complete in each area.
- Construction should not take place at night-time.
- The laydown area should be sited away from the N14 road and preferably not located on areas that are prominent.
- Topsoil (if any) from the footprints of the road and structures should be stockpiled for rehabilitation and restoration purposes.
- Strict litter control.
- Temporary roads should be well marked and should only cross drainage lines on areas identified as permanent road features where erosion and soil loss management can be contained.

8.2 Operation Phase

During the operation phase movement of vehicles frequenting the area may cause, at the very least, a cumulative visual nuisance to landowners and residents in the area as well as to road users.

The following actions should be implemented during operation phase:

- Strict litter control.
- Continued erosion control.

8.3 Deconstruction Phase (if required)

During the de-construction phase heavy vehicles, components, equipment and construction crews will frequent the area and may cause, at the very least, a cumulative visual nuisance to landowners and residents in the area as well as to road users. The following actions should be implemented during construction phase:

- Adopt responsible de-construction practices aimed at containing the activities to impacted areas only.
- Rehabilitate all disturbed areas to acceptable visual standards as soon as possible after de-construction is complete in an area.
- De-construction should not take place at night-time.
- If very dry conditions prevail and dust becomes a nuisance, water should be sprayed on the road surface (or implement another suitable mitigation to reduce wind-blown dust).
- Strict litter control.
- All monopoles need to be removed from site and adequately processed in accordance with national legislation.

9 CONCLUSION

Due to the relative remoteness of the locality and some topographic screening, no high exposure and sensitive receptors were identified for the study area, and as such Visual Exposure and Sensitivity to landscape change for both preferred routing sites is defined as **Low**. However, scenic resources were identified within the project zone of visual influence. These visual resources include low hills, rocky outcrops and long red dunes and were located. These scenic resources would fall within the project Zone of Visual Influence of the Western Alternative Collector routings. These landscape features do add value to the regional landscape context and have potential for eco-tourism, adding value to the existing game farming taking place in the area. As such, there is a need to protect these resources from higher levels of visual intrusion.

The VRM study found that all routings do include shallow washes, and could include sensitive vegetation. Should these areas be identified by the Ecological / surface water hydrology specialist as significant, they would need to be excluded from the mono-pole positioning.

The bushmanland arid grassland portions of the Bloemsmond PV 3 to 5 Western Collector routings, as well as the Southern (Alt B) Connector routing, were assigned a Class III visual objectives. The Class III objective is to partially retain the existing character of the landscape, where the level of change to the characteristic landscape should be moderate. The proposed development may attract attention, but should not dominate the view of the casual observer, and changes should repeat the basic elements found in the predominant natural features of the characteristic landscape.

The **Western Alternative Collector** routing is aligned along the western boundary of the Bloemsmond property where there are scenic resources, which include rocky outcrops and dune landscapes. Although no receptors are currently using these landscape resources for tourism, a power line landscape modification within close vicinity to these scenic resources, could detract from future eco-tourism opportunities. As the proposed routing is likely to be visually intrusive as seen from these areas, ***this routing is not recommended.***

The **Southern (Alt B) Connector** routing was assigned a Class III visual objective due to the closer proximity of the Southern Connector routing to the N14 national Highway, which would include tourist related receptors. However, due to the higher VAC levels created by the existing (and future proposed) power lines in the area as well as the 1.7km distance between the road, this landscape modification would meet the Class III visual objective.

The bushmanland arid grassland portions of the Bloemsmond PV 3 to 5 **Eastern Collector** routing, as well as the **Northern (Alt A) Connector** routing, were assigned a Class IV visual objectives. This is due to the seldom seen nature of these routings that have limited scenic resources and closer proximity to existing PV and CSP projects (and associated power lines). The Class IV objective is to provide for management activities that require major modifications of the existing character of the landscape but working within international best practice for landscape modification management and restoration. As these routings would meet the Class IV visual objects, these two routings are visually preferred routings. Mitigations have been provided and would need to be implemented. Should they be effectively implemented, it is unlikely that the Bloemsmond PV 3 to 5 Eastern Collector routing, as well as the Northern (Alt A) Connector routings would degrade significant visual resources.

10 BIBLIOGRAPHY

- Barbour, T. (2019). *Social Impact Assessment Bloemsmond 3 Solar Energy Facility Northern Cape Province*.
- IEMA. (2002). *U.K Institute of Environmental Management and Assessment (IEMA). 'Guidelines for Landscape and Visual Impact Assessment' Second Edition, Spon Press. Pg 44.*
- NELPAG. *New England Light Pollution Advisory Group (NELPAG) <http://cfa/www.harvard.edu/cfa/ps/nelpag.html> and Sky & Telescope <http://SkyandTelescope.com/>). NELPAG and Sky & Telescope support the International Dark-Sky Association (IDA) (<http://www.darksky.o>.*
- Oberholzer, B. (2005). *Guideline for involving visual and aesthetic specialists in EIA processes: Edition 1. CSIR Report No ENV-S-C 2005 053 F. Republic of South Africa, Provincial Government of the Western Cape, Department of Environmental Affairs and Deve.*
- SANBI. (2014). *SANBI tools for Georeferencing, Species distributions and extensions for ArcView 3.x. v. 25. Unpublished guide. South African National Biodiversity Institute, Cape Town.*
- Sheppard, D. S. (2000). *Guidance for crystal ball gazers: Developing a code of ethics for landscape visualization* . University of British Columbia, Department of Forest Resources Management and Landscape Architecture Program, Vancouver.
- Sheppard, D. S. (2000). *Guidance for crystal ball gazers: Developing a code of ethics for landscape visualization*. Department of Forest Resources Management and Landscape Architecture Program, University of British Columbia, Vancouver, Canada .
- The Landscape Institute. (2003). *Guidelines for Landscape and Visual Impact Assessment (Second ed.)*. Spon Press.
- USDI., B. (2004). *Bureau of Land Management, U.S. Department of Interior. 2004. Visual Resource Management Manual 8400.*
- Western Cape Government. (2002). *Guideline for the Management of Developmetn on Mountains, Hills and Ridges in teh Western Cape*. Environmental Affairs & Development Planning.

11 ANNEXURE A: FIELD SURVEY PHOTOGRAPH AND COMMENTS

The following photographs were taken during the field survey. The text below the photograph describes the landscape and visual issues of the locality, if applicable. The photograph points are mapped in the Survey Point Locality Map in Annexure B.



Figure 1: Survey Point 1 photograph taken towards the northwest of the alternative access off the N14 National Road.



Figure 2: Survey Point 2 photograph taken towards the northwest of the preferred access point off the N14 National Road.

Cultivated lands are visible to the left, with the viticulture practice creating a unique landscape element and contributing to the cultural landscape that defines the areas on either side of the Orange River. The existing Eskom power line is visible in the background, which, with the built structures of the agriculture of the area increases the visual carrying capacity of the N14 National Road.



Figure 3: Survey Point 3 photograph taken towards the southwest of the vineyards that are located on the southern portions of the property.

As indicated earlier, the viticulture practice is an important component of the Orange River cultural landscape.



Figure 4: Survey Point 4 photograph taken towards the southeast from a slightly prominent locality on the property, of the Orange River valley with the agriculturally related structures and vineyards.

Given the 3.5km distance and the built environment of Bloemsmond settlement, this area is unlikely to be influenced by the change to the landscape character. This portion of the property falls within the area authorised for the development of the Bloemsmond 1 & 2 Solar PV plant. No construction has yet taken place.



Figure 5: Survey Point 5 photograph taken towards the south of the typical arid vegetation of the Nama-karoo landscapes of this portion of the property.



Figure 6: Survey Point 6 photograph taken to the northeast of the arid vegetation of this portion of the property, with the Kai Solar One CSP structure in the mid-ground.

This portion of the property is authorised for the construction of Bloemsmond Solar PV 1 and 2. The terrain is flat and without any significant visual resources that would be degraded.



Figure 7: Survey Point 7 photograph taken towards the southeast of the rocky outcrop of this portion of the property.

The alternative access road is routed through this area, which could result in ecological impacts (subject to the ecological specialist's findings). This area is also prominent with clear views to the west of the property, and includes visual resources associated with rocky outcrops, and a long red dune feature.



Figure 8: Survey Point 8 photograph taken towards the north of the small rocky outcrop located to the north west of the proposed PV 3 area depicting the flat terrain of the area.



Figure 9: Survey Point 9 photograph taken towards the east of the Khi Solar One CSP Tower as seen from the proposed development footprint.

This portion of the property is flat and offers limited scenic value. Clearly visible in the mid-ground to the east is the large and glowing (during the day) structure of the CSP tower, which dominates the sense of place.



Figure 10: Survey Point 10 photograph taken towards the west of the rocky outcrops and low hills to the west of the property.

The hilly terrain to the west of the property increases the scenic value of the area west of the farm. Power line routings along the western section of the property could degrade these visual resources.



Figure 11: Survey Point 11 photograph taken towards the west of the hilly terrain located to the west of the property.

As indicated previously, the increased undulation of the terrain to the west of the property increases scenic resources and opportunities for eco-tourism. This location is also exposed and located on a rocky outcrop which could be ecologically significant (subject to the ecological specialist's findings).



Figure 12: Survey Point 12 photograph taken towards the west of the large pan located on the property.

This area is low lying and probably subjected to periodic flooding, as seen in the 2017 Google Earth satellite image which depicts the area filled with water. The pan, located in a low lying area in closer proximity to the western hilly terrain, increases the potential for this area to be utilised for ecotourism / game farming.



Figure 13: Survey Point 13 photograph taken north of the remote nature of the site.

Although remote in nature, two CSP towers (Sasol CSP) are authorised for construction in the area, but due to the distance, are unlikely to further degrade the remaining natural sense of place of the locality.



Figure 14: Survey Point 14 photograph taken to the north from the gravel road access

The Khi Solar 1 is visible in the background and the flat terrain is clearly apparent.



Figure 15: Survey Point 15 photograph taken to the west from the gravel road access.

The flat terrain is clearly apparent with the low hills in the background.



Figure 16: Survey Point 16 photograph taken to the southeast from the gravel road access to the under construction Sirius Solar PV Project One facility.

The flat terrain is clearly apparent with the existing 132kV Eskom power line visible in the background.



Figure 17: Survey Point 17 photograph taken to the north from the gravel road access to the under construction Sirius Solar PV Project One facility.

The flat terrain is clearly apparent with the existing Khi Solar 1 clearly visible in the background. Not visible in the photograph is the construction of a power line to vacate the electricity from the Sirius (and other) PV projects in the vicinity.

12 ANNEXURE B: LANDSCAPE AND VISUAL IMPACT MAPS

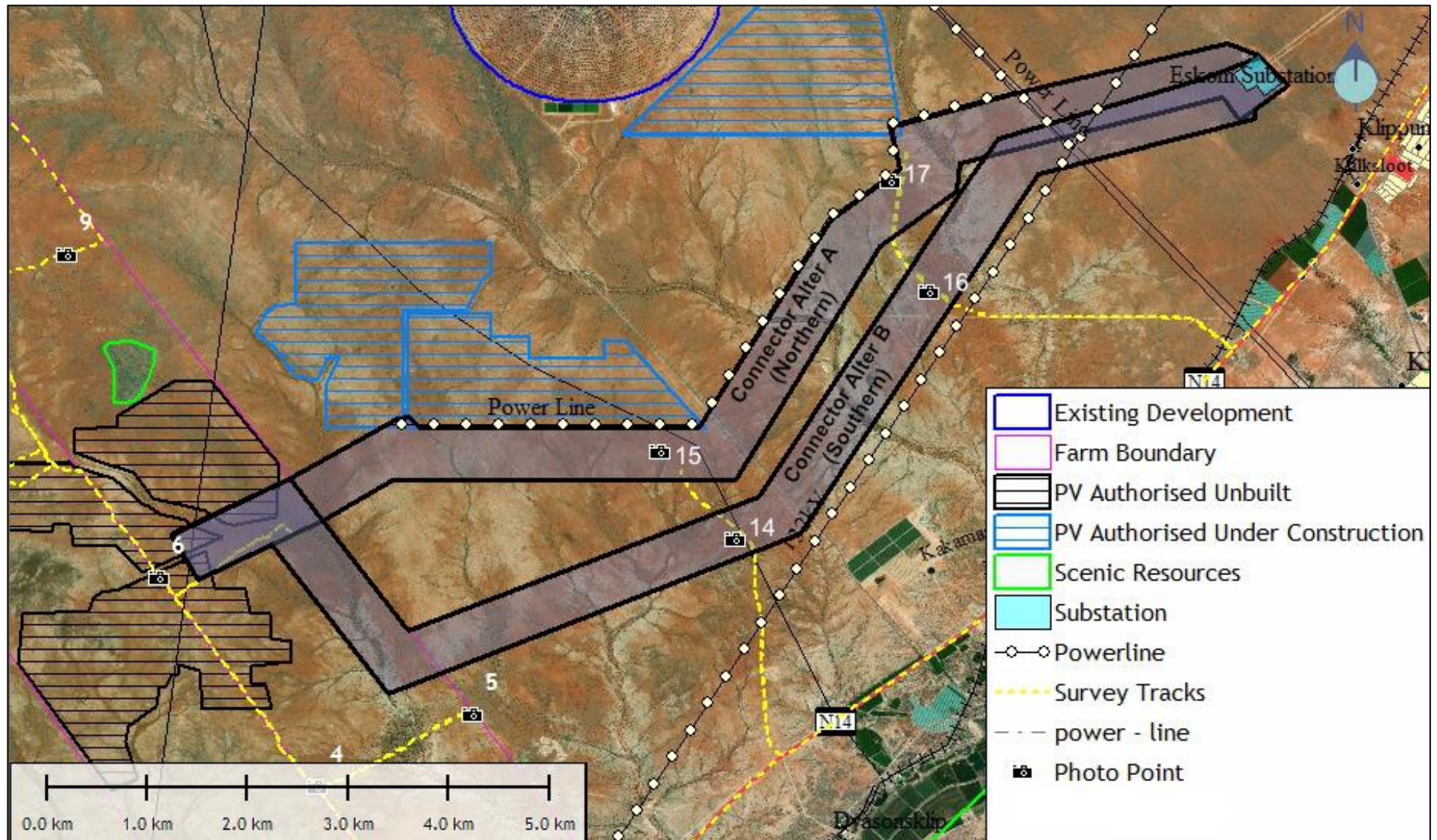


Figure 18: Proposed grid collector alternatives in relation to the proposed Bloemsmond PV projects and site survey points.

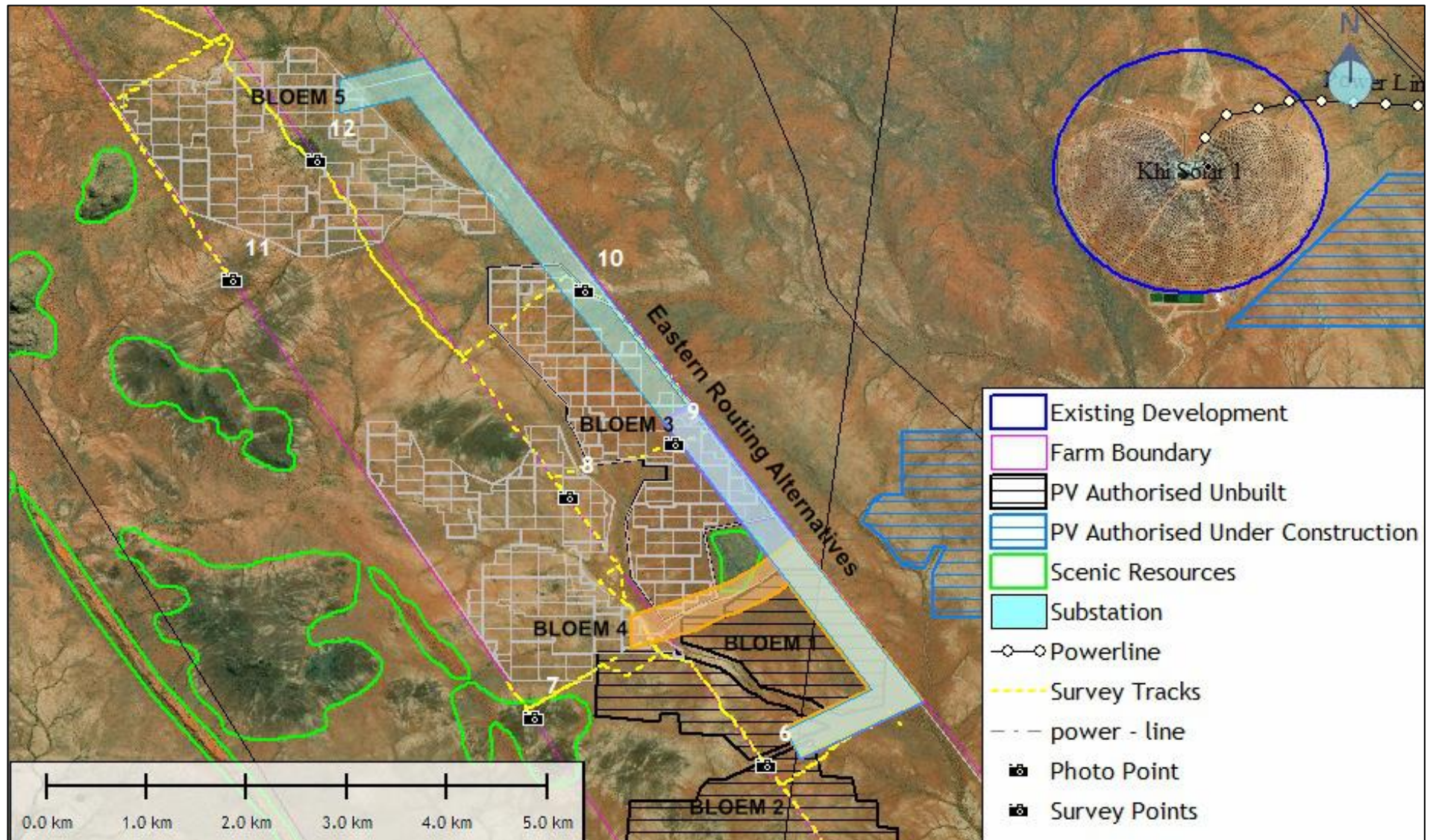


Figure 19: Proposed grid connector preferred eastern alternatives in relation to the proposed Bloemsmond PV projects and site survey points.

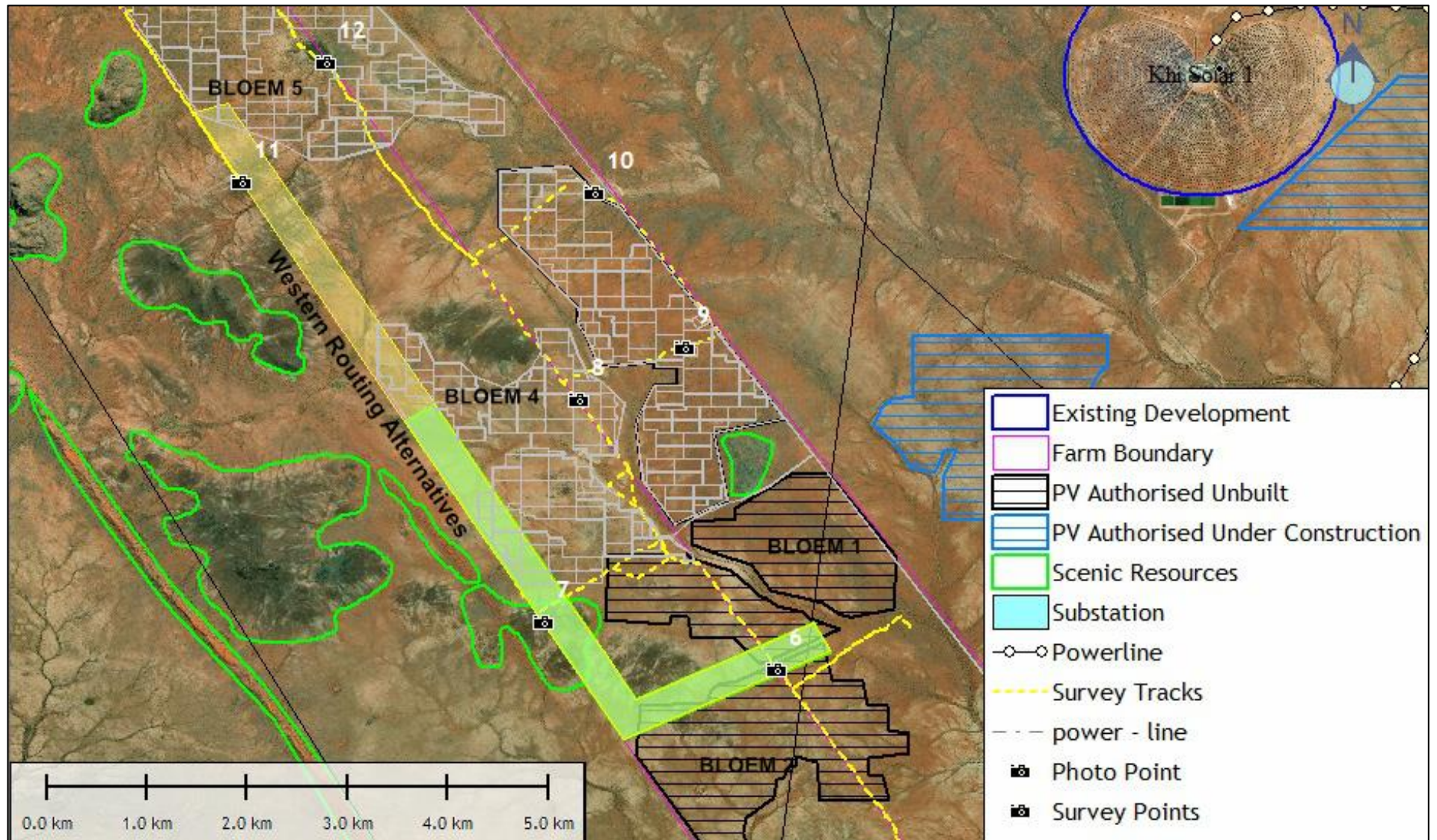


Figure 20: Proposed grid connector western alternatives in relation to the proposed Bloemsmond PV projects and site survey points.

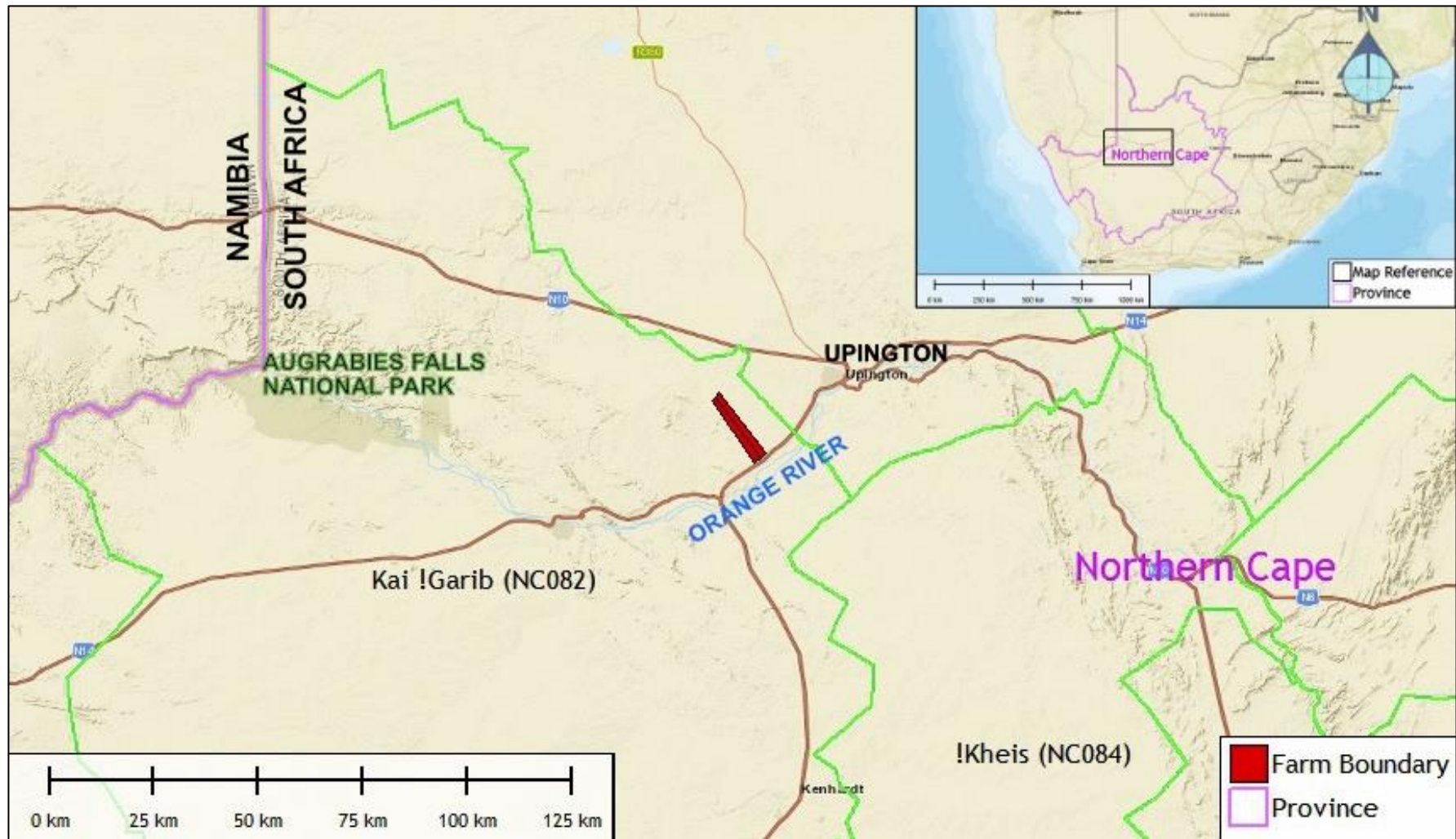


Figure 21: National and Regional Governance Locality Map

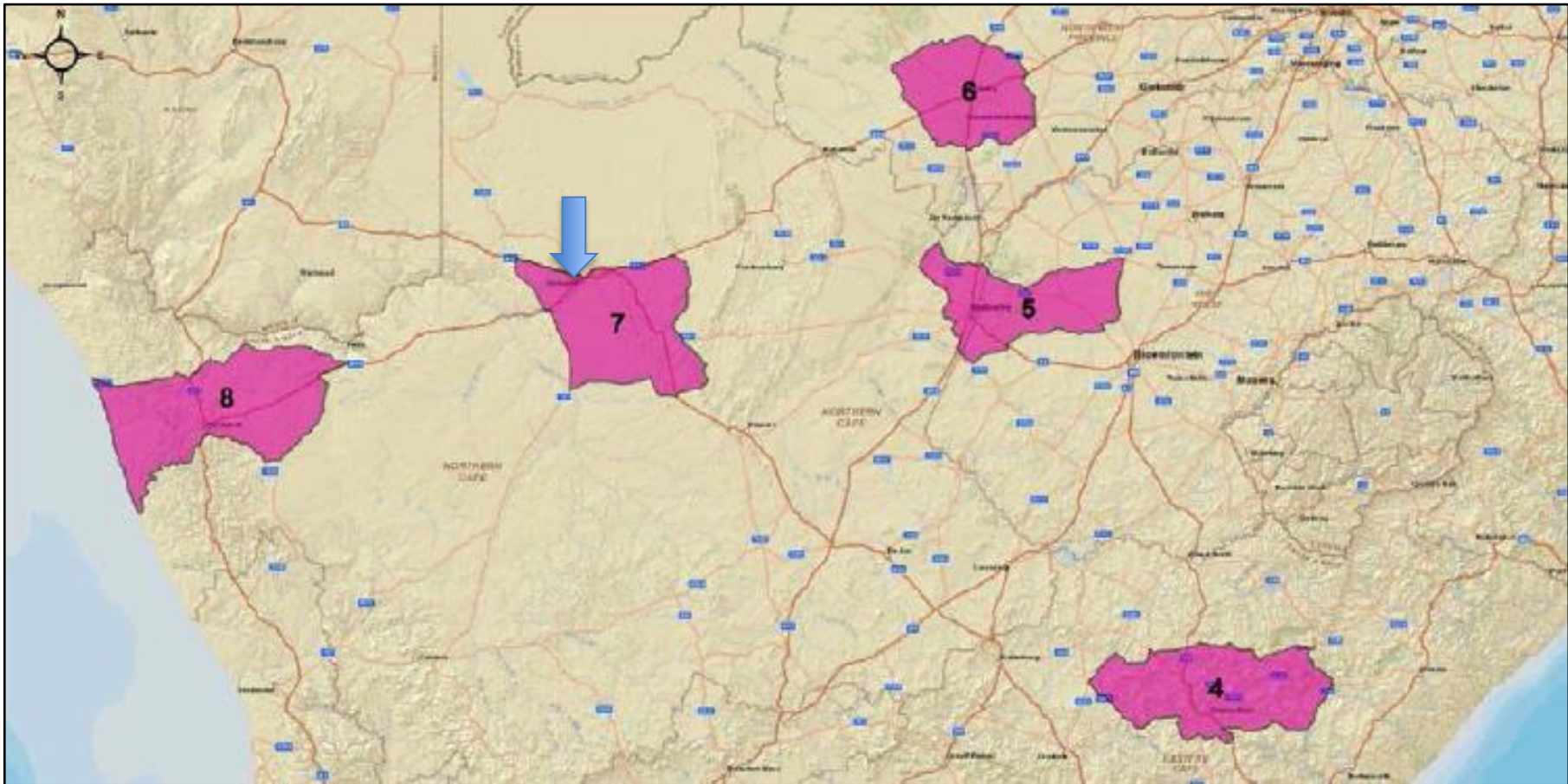


Figure 22: Renewable Energy Development Zones map with the arrow indicating the approximate location of the projects in REDZ 7.

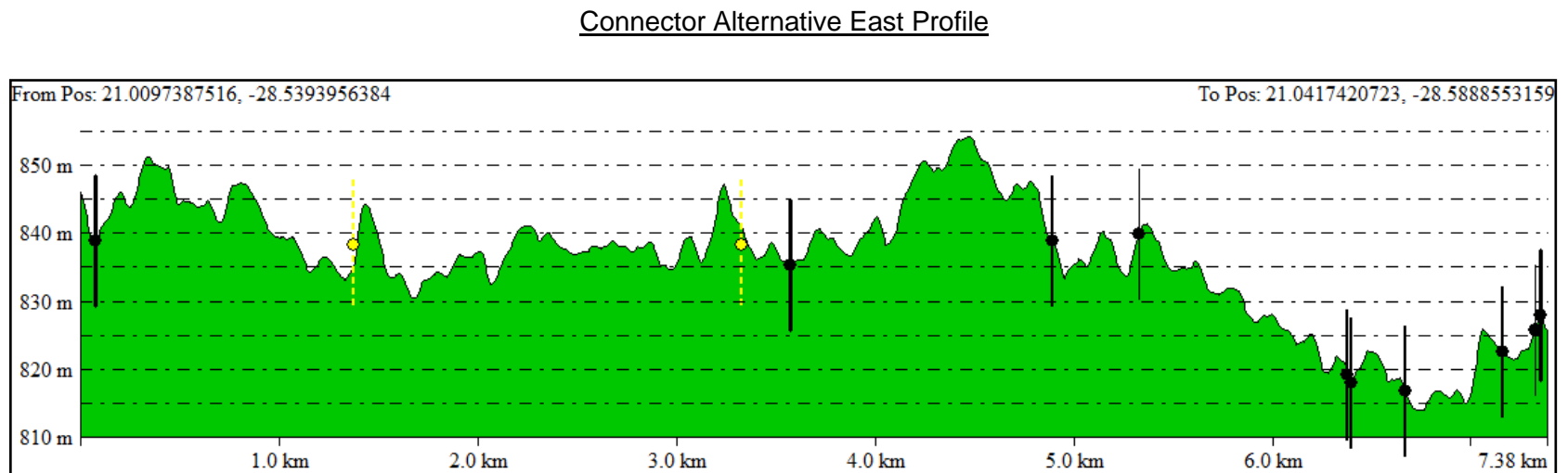
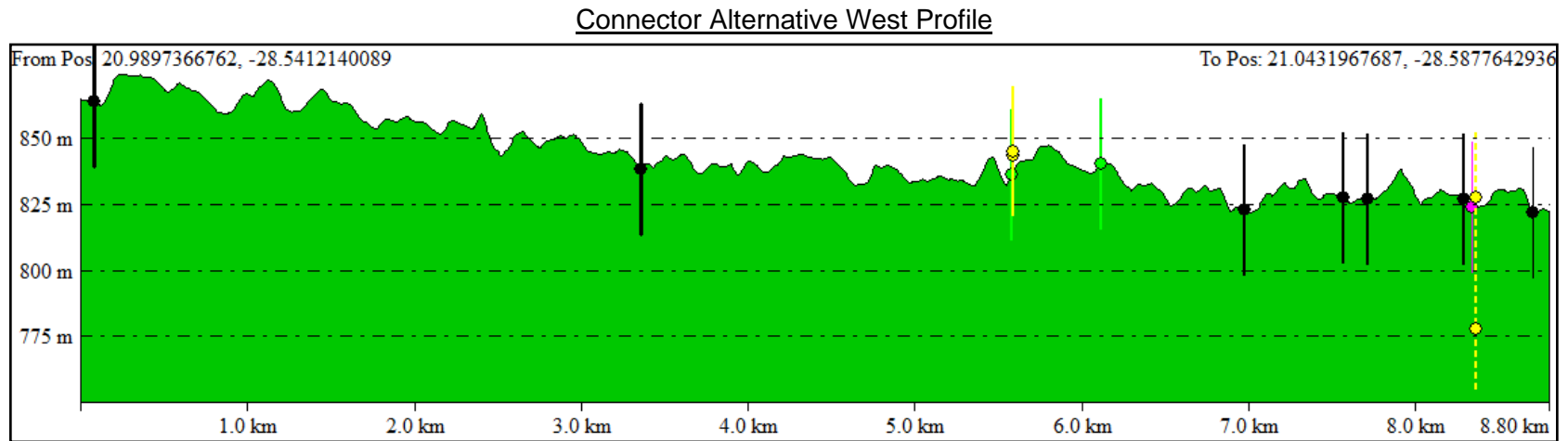


Figure 23: Bloemsmond PV Connector Grid routing topographic profile graphs.

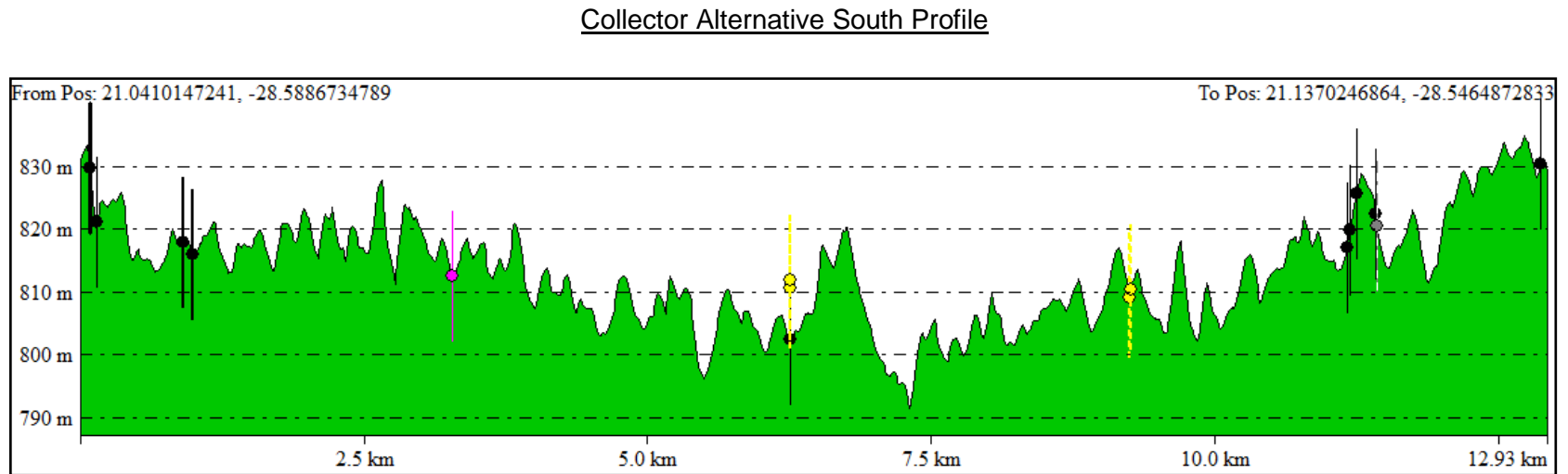
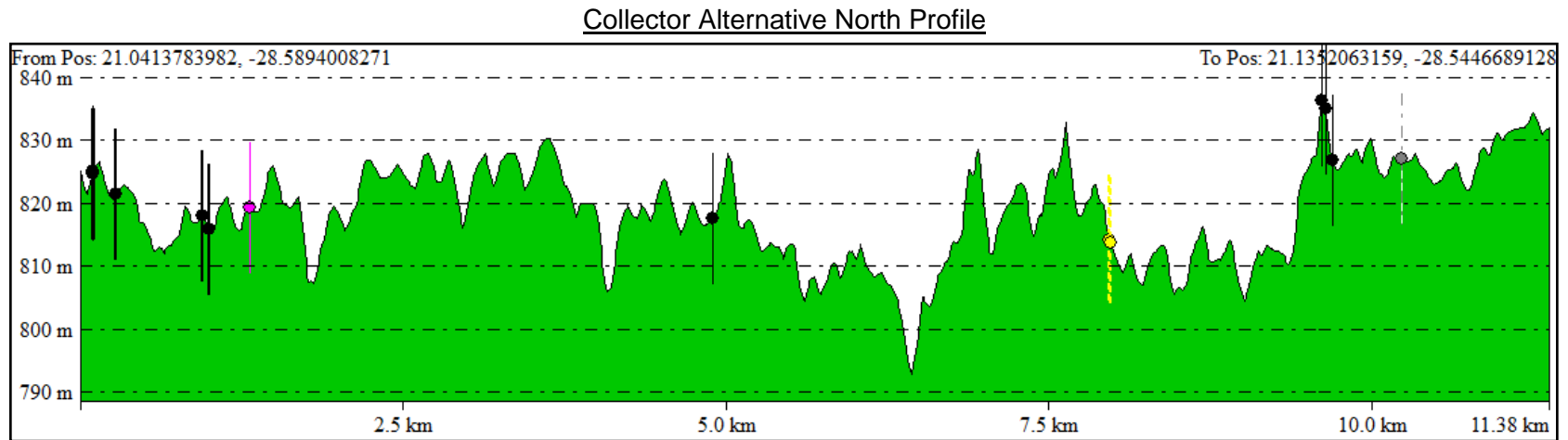


Figure 24: Bloemsmond PV Collector Grid routing topographic profile graphs.

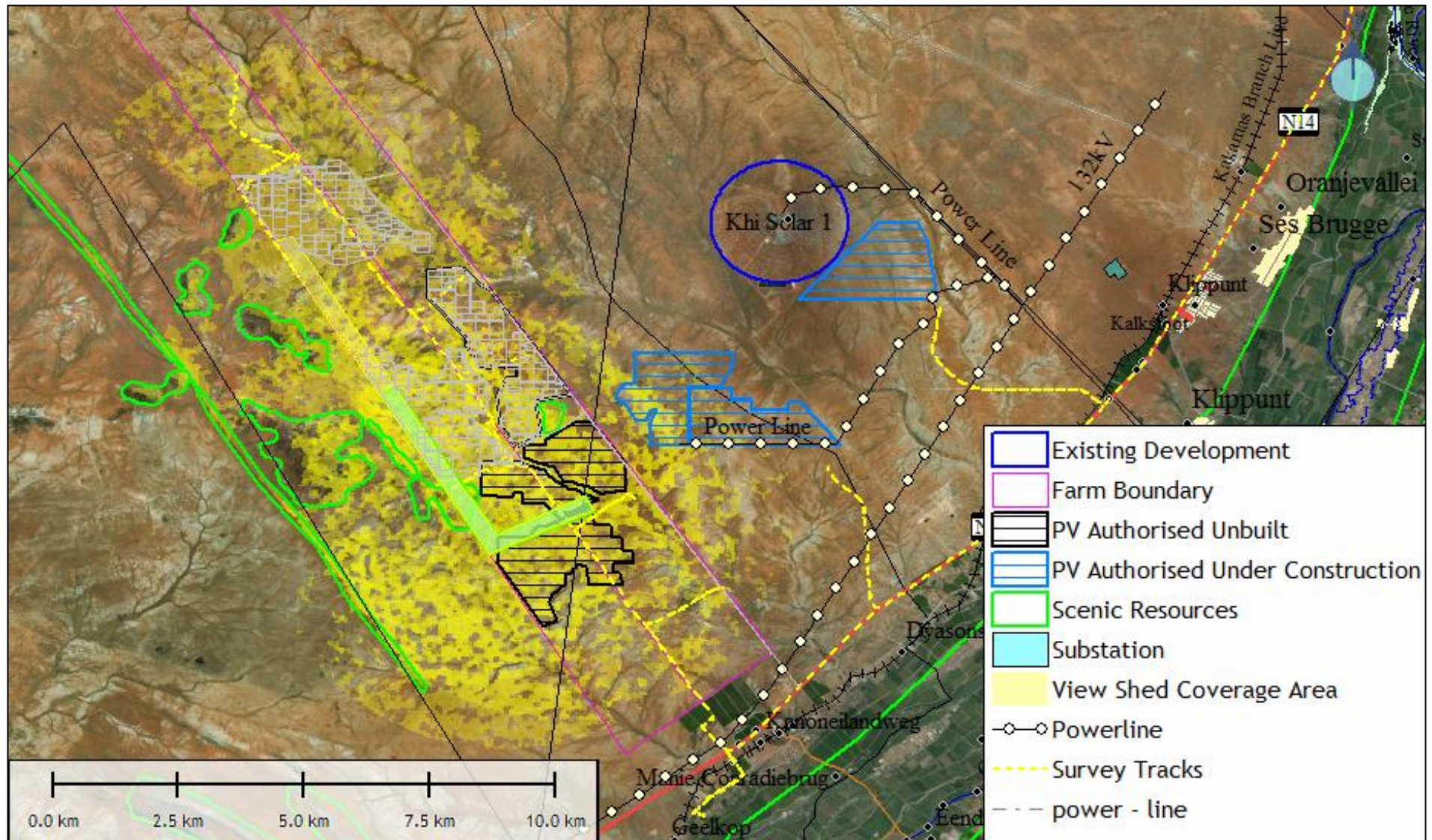


Figure 25: Bloemsmond Connector Alternative West Viewshed Map

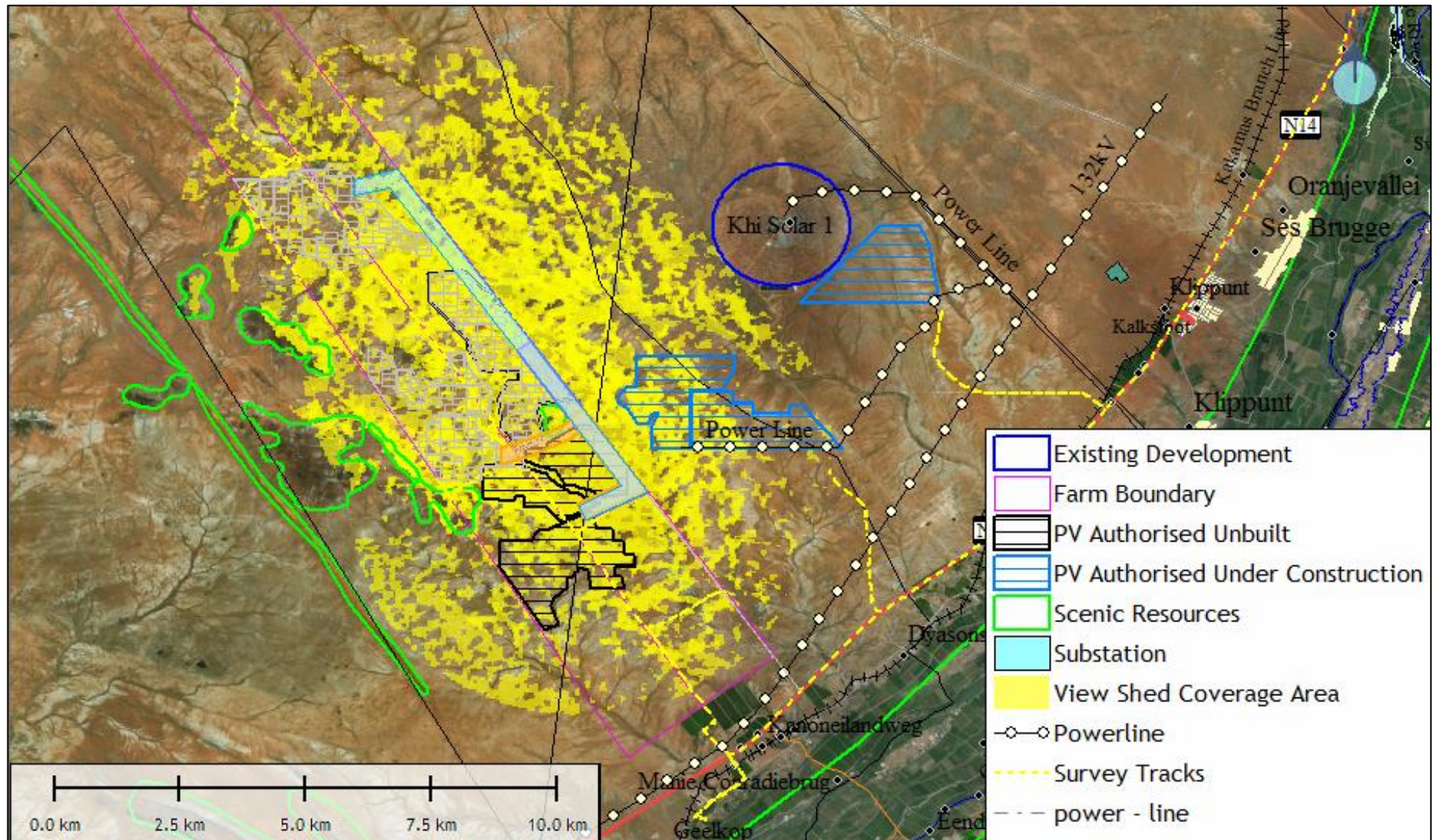


Figure 26: Bloemsmond Connector Alternative East (preferred) Viewshed Map

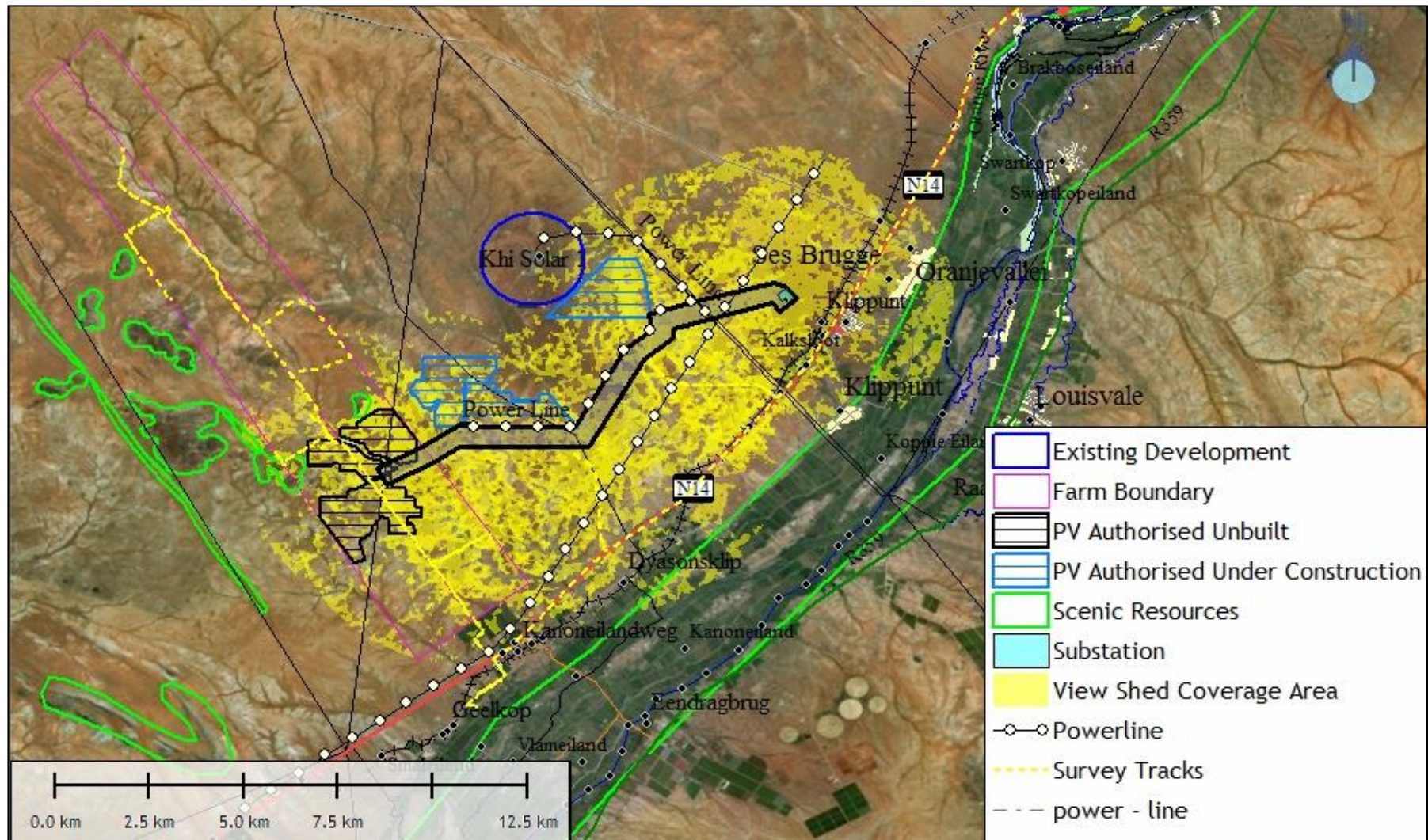


Figure 27: Bloemsmond Collector Alternative North Viewshed Map

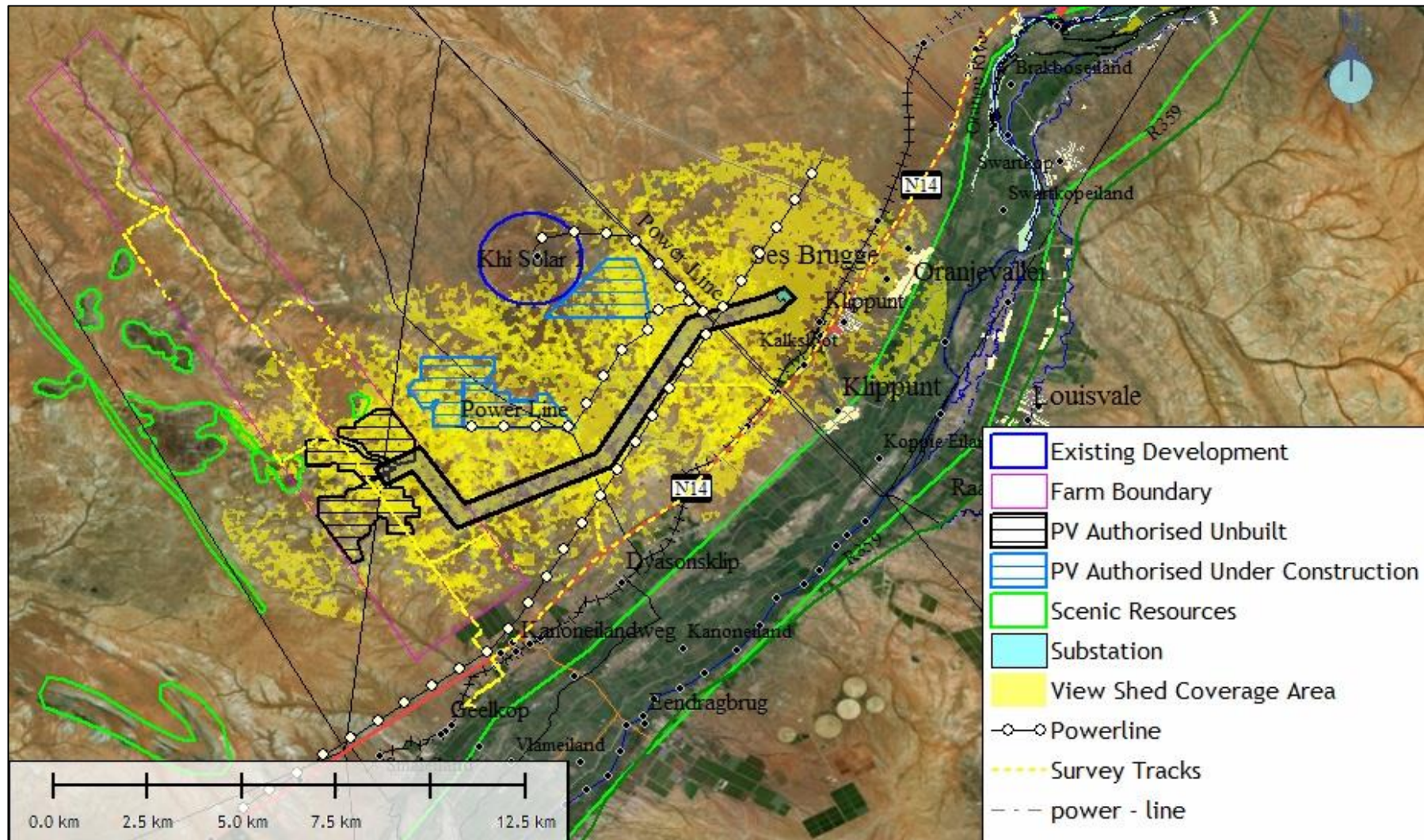


Figure 28: Bloemsmond Collector Alternative South Viewshed Map

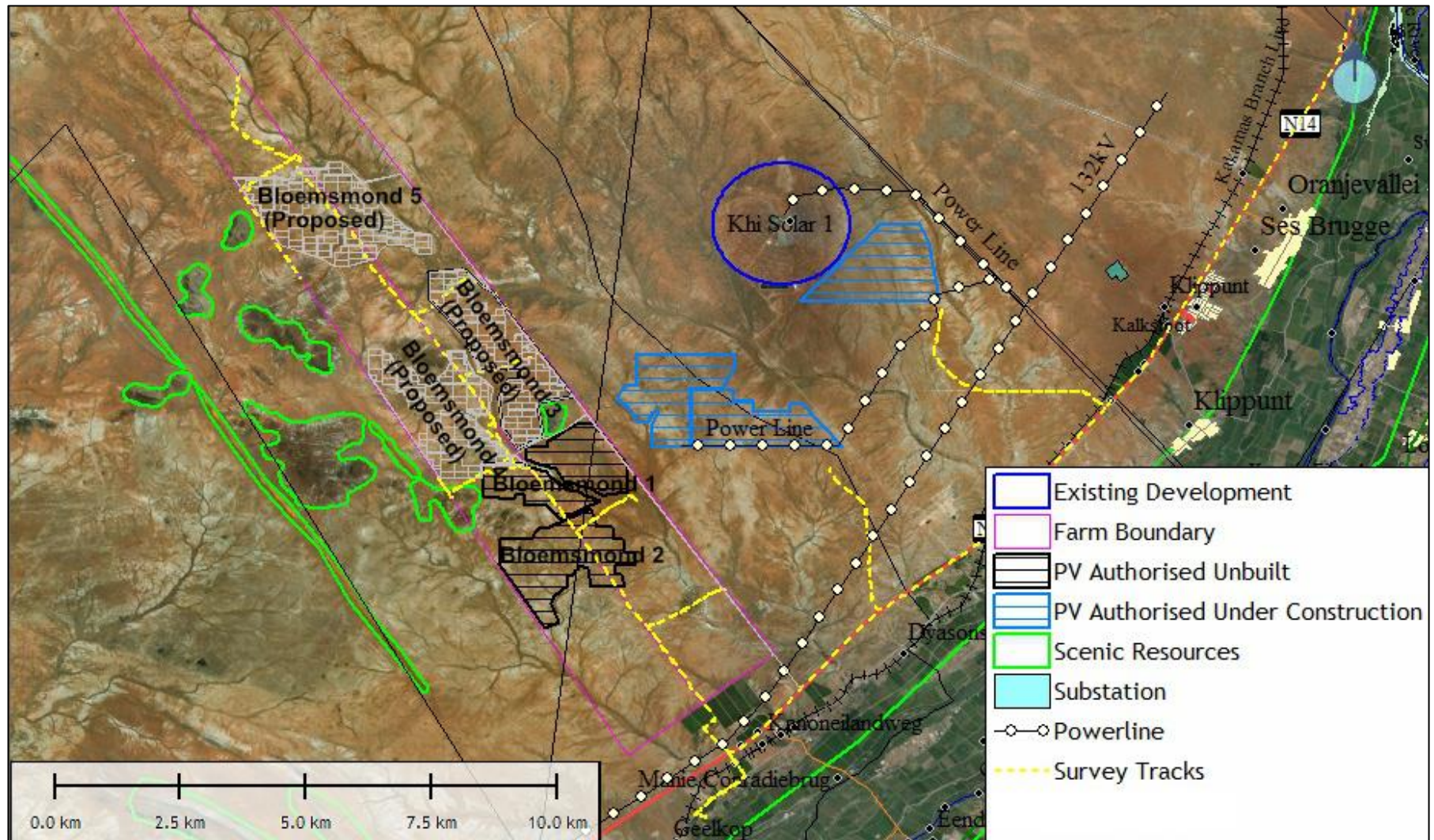


Figure 29: Renewable Energy Cumulative Projects maps.

13 ANNEXURE C: SPECIALIST INFORMATION

Curriculum Vitae (CV)

1. **Position:** Owner / Director
 2. **Name of Firm:** Visual Resource Management Africa cc (*www.vrma.co.za*)
 3. **Name of Staff:** Stephen Stead
 4. **Date of Birth:** 9 June 1967
 5. **Nationality:** South African
 6. **Contact Details:** **Tel: +27 (0) 44 876 0020**
Cell: +27 (0) 83 560 9911
Email: steve@vrma.co.za
-

7. Educational qualifications:

- University of Natal (Pietermaritzburg):
- Bachelor of Arts: Psychology and Geography
- Bachelor of Arts (Hons): Human Geography and Geographic Information Management Systems

8. Professional Accreditation

- Association of Professional Heritage Practitioners (APHP) Western Cape
 - Accredited VIA practitioner member of the Association (2011)

9. Association involvement:

- International Association of Impact Assessment (IAIA) South African Affiliate
 - Past President (2012 - 2013)
 - President (2012)
 - President-Elect (2011)
 - Conference Co-ordinator (2010)
 - National Executive Committee member (2009)
 - Southern Cape Chairperson (2008)

10. Conferences Attended:

- IAIAAsa 2012
- IAIAAsa 2011
- IAIA International 2011 (Mexico)
- IAIAAsa 2010
- IAIAAsa 2009
- IAIAAsa 2007

11. Continued Professional Development:

- Integrating Sustainability with Environment Assessment in South Africa (IAIAsa Conference, 1 day)
- Achieving the full potential of SIA (Mexico, IAIA Conference, 2 days 2011)
- Researching and Assessing Heritage Resources Course (University of Cape Town, 5 days, 2009)

12. Countries of Work Experience:

- South Africa, Mozambique, Malawi, Lesotho, Kenya and Namibia

13. Relevant Experience:

Stephen gained six years of experience in the field of Geographic Information Systems mapping and spatial analysis working as a consultant for the KwaZulu-Natal Department of Health and then with an Environmental Impact Assessment company based in the Western Cape. In 2004 he set up the company Visual Resource Management Africa that specializes in visual resource management and visual impact assessments in Africa. The company makes use of the well-documented Visual Resource Management methodology developed by the Bureau of Land Management (USA) for assessing the suitability of landscape modifications. Stephen has assessed of over 150 major landscape modifications throughout southern and eastern Africa. The business has been operating for eight years and has successfully established and retained a large client base throughout Southern Africa which include amongst other, Rio Tinto (Pty) Ltd, Bannerman (Pty) Ltd, Anglo Coal (Pty) Ltd, Eskom (Pty) Ltd, NamPower and Vale (Pty) Ltd, Ariva (Pty) Ltd, Harmony Gold (Pty) Ltd, Millennium Challenge Account (USA), Pretoria Portland Cement (Pty) Ltd

14. Languages:

- English – First Language
- Afrikaans – fair in speaking, reading and writing

15. Projects:

A list of **some** of the large scale projects that VRMA has assessed has been attached below with the client list indicated per project (Refer to www.vrma.co.za for a full list of projects undertaken).

Table 14: VRM Africa Projects Assessments Table

YEAR	NAME	DESCRIPTION	LOCATION
2018	Mogara PV	Solar Energy	Northern Cape (SA)
2018	Gaetsewe PV	Solar Energy	Northern Cape (SA)
2017	Kalungwishi Hydroelectric (2) and power line	Hydroelectric	Zambia
2017	Mossel Bay UISP (Kwanoqaba)	Settlement	Western Cape (SA)
2017	Pavua Dam and HEP	Hydroelectric	Mozambique (SA)
2017	Penhill UISP Settlement (Cape Town)	Settlement	Western Cape (SA)
2016	Kokerboom WEF * 3	Wind Energy	Northern Cape (SA)
2016	Hotazel PV	Solar Energy	Northern Cape (SA)
2016	Eskom Sekgame Bulkop Power Line	Infrastructrue	Northern Cape (SA)

2016	Ngonye Hydroelectric	Hydroelectric	Zambia
2016	Levensdal Infill	Settlement	Western Cape (SA)
2016	Arandis CSP	Solar Energy	Namibia
2016	Bonnievale PV	Solar Energy	Western Cape (SA)
2015	Noblesfontein 2 & 3 WEF (Scoping)	Wind Energy	Eastern Cape (SA)
2015	Ephraim Sun SEF	Solar Energy	Nothern Cape (SA)
2015	Dyasonsklip and Sirius Grid TX	Solar Energy	Nothern Cape (SA)
2015	Dyasonsklip PV	Solar Energy	Nothern Cape (SA)
2015	Zeerust PV and transmission line	Solar Energy	North West (SA)
2015	Bloemsmond SEF	Solar Energy	Nothern Cape (SA)
2015	Juwi Copperton PV	Solar Energy	Nothern Cape (SA)
2015	Humansrus Capital 14 PV	Solar Energy	Nothern Cape (SA)
2015	Humansrus Capital 13 PV	Solar Energy	Nothern Cape (SA)
2015	Spitzkop East WEF (Scoping)	Solar Energy	Western Cape (SA)
2015	Lofdal Rare Earth Mine and Infrastructure	Mining	Namibia
2015	AEP Kathu PV	Solar Energy	Nothern Cape (SA)
2014	AEP Mogobe SEF	Solar Energy	Nothern Cape (SA)
2014	Bonnievale SEF	Solar Energy	Western Cape (SA)
2014	AEP Legoko SEF	Solar Energy	Northern Cape (SA)
2014	Postmasburg PV	Solar Energy	Northern Cape (SA)
2014	Joram Solar	Solar Energy	Northern Cape (SA)
2014	RERE PV Postmasberg	Solar Energy	Northern Cape (SA)
2014	RERE CPV Upington	Solar Energy	Northern Cape (SA)
2014	Rio Tinto RUL Desalination Plant	Industrial	Namibia
2014	NamPower PV * 3	Solar Energy	Namibia
2014	Pemba Oil and Gas Port Expansion	Industrial	Mozambique
2014	Brightsource CSP Upington	Solar Energy	Northern Cape (SA)
2014	Witsand WEF (Scoping)	Wind Energy	Western Cape (SA)
2014	Kangnas WEF	Wind Energy	Western Cape (SA)
2013	Cape Winelands DM Regional Landfill	Industrial	Western Cape (SA)
2013	Drennan PV Solar Park	Solar Energy	Eastern Cape (SA)
2013	Eastern Cape Mari-culture	Mari-culture	Eastern Cape (SA)
2013	Eskom Pantom Pass Substation	Substation /Tx lines	Western Cape (SA)
2013	Frankfort Paper Mill	Plant	Free State (SA)
2013	Gibson Bay Wind Farm Transmission lines	Tranmission lines	Eastern Cape (SA)
2013	Houhoek Eskom Substation	Substation /Tx lines	Western Cape (SA)
2013	Mulilo PV Solar Energy Sites (x4)	Solar Energy	Northern Cape (SA)
2013	Namies Wind Farm	Wind Energy	Northern Cape (SA)
2013	Rossing Z20 Pit and WRD	Mining	Namibia
2013	SAPPI Boiler Upgrade	Plant	Mpumalanga (SA)
2013	Tumela WRD	Mine	North West (SA)

2013	Weskusfleur Substation (Koeburg)	Substation /Tx lines	Western Cape (SA)
2013	Yzermyn coal mine	Mining	Mpumalanga (SA)
2012	Afrisam	Mining	Western Cape (SA)
2012	Bitterfontein	Solar Energy	Northern Cape (SA)
2012	Kangnas PV	Solar Energy	Northern Cape (SA)
2012	Kangnas PV	Solar Energy	Northern Cape (SA)
2012	Kathu CSP Tower	Solar Energy	Northern Cape (SA)
2012	Kobong Hydro	Hydro & Powerline	Lesotho
2012	Letseng Diamond Mine Upgrade	Mining	Lesotho
2012	Lunsklip Wind Farm	Wind Energy	Western Cape (SA)
2012	Mozambique Gas Engine Power Plant	Plant	Mozambique
2012	Ncondezi Thermal Power Station	Substation /Tx lines	Mozambique
2012	Sasol CSP Tower	Solar Power	Free State (SA)
2012	Sasol Upington CSP Tower	Solar Power	Northern Cape (SA)
2011	Beaufort West PV Solar Power Station	Solar Energy	Western Cape (SA)
2011	Beaufort West Wind Farm	Wind Energy	Western Cape (SA)
2011	De Bakke Cell Phone Mast	Structure	Western Cape (SA)
2011	ERF 7288 PV	Solar Energy	Western Cape (SA)
2011	Gecko Industrial park	Industrial	Namibia
2011	Green View Estates	Residential	Western Cape (SA)
2011	Hoodia Solar	Solar Energy	Western Cape (SA)
2011	Kalahari Solar Power Project	Solar Energy	Northern Cape (SA)
2011	Khanyisa Power Station	Power Station	Western Cape (SA)
2011	Olyvn Kolk PV	Solar Energy	Northern Cape (SA)
2011	Otjikoto Gold Mine	Mining	Namibia
2011	PPC Rheebeek West Upgrade	Industrial	Western Cape (SA)
2011	George Southern Arterial	Road	Western Cape (SA)
2010	Bannerman Etango Uranium Mine	Mining	Namibia
2010	Bantamsklip Transmission	Transmission	Eastern Cape (SA)
2010	Beaufort West Urban Edge	Mapping	Western Cape (SA)
2010	Bon Accord Nickel Mine	Mining	Mapumalanga (SA)
2010	Etosha National Park Infrastructure	Housing	Namibia
2010	Herolds Bay N2 Development Baseline	Residential	Western Cape (SA)
2010	MET Housing Etosha	Residential	Namibia
2010	MET Housing Etosha Amended MCDM	Residential	Namibia
2010	MTN Lattice Hub Tower	Structure	Western Cape (SA)
2010	N2 Herolds Bay Residential	Residential	Western Cape (SA)
2010	Onifin(Pty) Ltd Hartenbos Quarry Extension	Mining	Western Cape (SA)
2010	Still Bay East	GIS Mapping	Western Cape (SA)
2010	Vale Moatize Coal Mine and Railway	Mining / Rail	Mozambique
2010	Vodacom Mast	Structure	Western Cape (SA)

2010	Wadrif Dam	Dam	Western Cape (SA)
2009	Asazani Zinyoka UISP Housing	Residential Infill	Western Cape (SA)
2009	Eden Telecommunication Tower	Structure	Western Cape (SA)
2009	George SDF Landscape Characterisation	GIS Mapping	Western Cape (SA)
2009	George SDF Visual Resource Management	GIS Mapping	Western Cape (SA)
2009	George Western Bypass	Road	Western Cape (SA)
2009	Knysna Affordable Housing Heidevallei	Residential Infill	Western Cape (SA)
2009	Knysna Affordable Housing Hornlee Project	Residential Infill	Western Cape (SA)
2009	Rossing Uranium Mine Phase 2	Mining	Namibia
2009	Sun Ray Wind Farm	Wind Energy	Western Cape (SA)
2008	Bantamsklip Transmission Lines Scoping	Transmission	Western Cape (SA)
2008	Erf 251 Damage Assessment	Residential	Western Cape (SA)
2008	Erongo Uranium Rush SEA	GIS Mapping	Namibia
2008	Evander South Gold Mine Preliminary VIA	Mining	Mpumalanga (SA)
2008	George SDF Open Spaces System	GIS Mapping	Western Cape (SA)
2008	Hartenbos River Park	Residential	Western Cape (SA)
2008	Kaaimans Project	Residential	Western Cape (SA)
2008	Lagoon Garden Estate	Residential	Western Cape (SA)
2008	Moquini Beach Hotel	Resort	Western Cape (SA)
2008	NamPower Coal fired Power Station	Power Station	Namibia
2008	Oasis Development	Residential	Western Cape (SA)
2008	RUL Sulphur Handling Facility Walvis Bay	Mining	Namibia
2008	Stonehouse Development	Residential	Western Cape (SA)
2008	Walvis Bay Power Station	Structure	Namibia
2007	Calitzdorp Retirement Village	Residential	Western Cape (SA)
2007	Calitzdorp Visualisation	Visualisation	Western Cape (SA)
2007	Camdeboo Estate	Residential	Western Cape (SA)
2007	Destiny Africa	Residential	Western Cape (SA)
2007	Droogfontein Farm 245	Residential	Western Cape (SA)
2007	Floating Liquefied Natural Gas Facility	Structure tanker	Western Cape (SA)
2007	George SDF Municipality Densification	GIS Mapping	Western Cape (SA)
2007	Kloofsig Development	Residential	Western Cape (SA)
2007	OCGT Power Plant Extension	Structure Power Plant	Western Cape (SA)
2007	Oudtshoorn Municipality SDF	GIS Mapping	Western Cape (SA)
2007	Oudtshoorn Shopping Complex	Structure	Western Cape (SA)
2007	Pezula Infill (Noetzie)	Residential	Western Cape (SA)
2007	Pierpoint Nature Reserve	Residential	Western Cape (SA)
2007	Pinnacle Point Golf Estate	Golf/Residential	Western Cape (SA)
2007	Rheebok Development Erf 252 Appeal	Residential	Western Cape (SA)
2007	Rossing Uranium Mine Phase 1	Mining	Namibia
2007	Ryst Kuil/Riet Kuil Uranium Mine	Mining	Western Cape (SA)

2007	Sedgefield Water Works	Structure	Western Cape (SA)
2007	Sulphur Handling Station Walvis Bay Port	Industrial	Namibia
2007	Trekkopje Uranium Mine	Mining	Namibia
2007	Weldon Kaya	Residential	Western Cape (SA)
2006	Farm Dwarsweg 260	Residential	Western Cape (SA)
2006	Fynboskruin Extention	Residential	Western Cape (SA)
2006	Hanglip Golf and Residential Estate	Residential	Western Cape (SA)
2006	Hansmoeskraal	Slopes Analysis	Western Cape (SA)
2006	Hartenbos Landgoed Phase 2	Residential	Western Cape (SA)
2006	Hersham Security Village	Residential	Western Cape (SA)
2006	Ladywood Farm 437	Residential	Western Cape (SA)
2006	Le Grand Golf and Residential Estate	Residential	Western Cape (SA)
2006	Paradise Coast	Residential	Western Cape (SA)
2006	Paradyskloof Residential Estate	Residential	Western Cape (SA)
2006	Riverhill Residential Estate	Residential	Western Cape (SA)
2006	Wolwe Eiland Access Route	Road	Western Cape (SA)
2005	Harmony Gold Mine	Mining	Mpumalanga (SA)
2005	Knysna River Reserve	Residential	Western Cape (SA)
2005	Lagoon Bay Lifestyle Estate	Residential	Western Cape (SA)
2005	Outeniquabosch Safari Park	Residential	Western Cape (SA)
2005	Proposed Hotel Farm Gansevallei	Resort	Western Cape (SA)
2005	Uitzicht Development	Residential	Western Cape (SA)
2005	West Dunes	Residential	Western Cape (SA)
2005	Wilderness Erf 2278	Residential	Western Cape (SA)
2005	Wolwe Eiland Eco & Nature Estate	Residential	Western Cape (SA)
2005	Zebra Clay Mine	Mining	Western Cape (SA)
2004	Gansevallei Hotel	Residential	Western Cape (SA)
2004	Lakes Eco and Golf Estate	Residential	Western Cape (SA)
2004	Trekkopje Desalination Plant	Structure Plant	Namibia (SA)
1995	Greater Durban Informal Housing Analysis	Photogrammetry	KwaZulu-Natal (SA)

14 ANNEXURE D: VRM CHECKLISTS AND TERMINOLOGY

Table 15: Scenic Quality Checklist

KEY FACTORS	RATING CRITERIA AND SCORE		
SCORE	5	3	1
Land Form	High vertical relief as expressed in prominent cliffs, spires or massive rock outcrops, or severe surface variation or highly eroded formations or detail features that are dominating and exceptionally striking and intriguing.	Steep-sided river valleys, or interesting erosion patterns or variety in size and shape of landforms; or detail features that are interesting, though not dominant or exceptional.	Low rolling hills, foothills or flat valley bottoms; few or no interesting landscape features.
Vegetation	A variety of vegetative types as expressed in interesting forms, textures and patterns.	Some variety of vegetation, but only one or two major types.	Little or no variety or contrast in vegetation.
Water	Clear and clean appearing, still or cascading white water, any of which are a dominant factor in the landscape.	Flowing, or still, but not dominant in the landscape.	Absent, or present but not noticeable.
Colour	Rich colour combinations, variety or vivid colour: or pleasing contrasts in the soil, rock, vegetation, water.	Some intensity or variety in colours and contrast of the soil, rock and vegetation, but not a dominant scenic element.	Subtle colour variations contrast or interest: generally mute tones.
Adjacent Scenery	Adjacent scenery greatly enhances visual quality.	Adjacent scenery moderately enhances overall visual quality.	Adjacent scenery has little or no influence on overall visual quality.
Scarcity	One of a kind: unusually memorable, or very rare within region. Consistent chance for exceptional wildlife or wildflower viewing etc.	Distinctive, though somewhat similar to others within the region.	Interesting within its setting, but fairly common within the region.
SCORE	2	0	-4
Cultural Modification	Modifications add favourably to visual variety, while promoting visual harmony.	Modifications add little or no visual variety to the area, and introduce no discordant elements.	Modifications add variety but are very discordant and promote strong disharmony.

Table 16: Sensitivity Level Rating Checklist

FACTORS	QUESTIONS	
Type of Users	Maintenance of visual quality is:	
	A major concern for most users	High
	A moderate concern for most users	Moderate
	A low concern for most users	Low
Amount of use	Maintenance of visual quality becomes more important as the level of use increases:	
	A high level of use	High
	Moderately level of use	Moderate
	Low level of use	Low
Public interest	Maintenance of visual quality:	
	A major concern for most users	High
	A moderate concern for most users	Moderate
	A low concern for most users	Low
Adjacent land Users	Maintenance of visual quality to sustain adjacent land use objectives is:	
	Very important	High
	Moderately important	Moderate
	Slightly important	Low
Special Areas	Maintenance of visual quality to sustain Special Area management objectives is:	
	Very important	High
	Moderately important	Moderate
	Slightly important	Low

Table 17: VRM Terminology Table

FORM		LINE		COLOUR		TEXTURE																																												
Simple	Weak	Strong	Dominant	Flat	Rolling	Undulating	Complex	Plateau	Ridge	Valley	Plain	Steep	Shallow	Organic	Structured	Horizontal	Vertical	Geometric	Angular	Acute	Parallel	Curved	Wavy	Strong	Weak	Crisp	Feathered	Indistinct	Clean	Prominent	Solid	Dark	Light	Mottled	Smooth	Rough	Fine	Coarse	Patchy	Even	Uneven	Complex	Simple	Stark	Clustered	Diffuse	Dense	Scattered	Sporadic	Consistent
Simple	Basic, composed of few elements			Organic	Derived from nature; occurring or developing gradually and naturally																																													
Complex	Complicated; made up of many interrelated parts			Structure	Organised; planned and controlled; with definite shape, form, or pattern																																													
Weak	Lacking strength of character			Regular	Repeatedly occurring in an ordered fashion																																													
Strong	Bold, definite, having prominence			Horizontal	Parallel to the horizon																																													
Dominant	Controlling, influencing the surrounding environment			Vertical	Perpendicular to the horizon; upright																																													
Flat	Level and horizontal without any slope; even and smooth without any bumps or hollows			Geometric	Consisting of straight lines and simple shapes																																													
Rolling	Progressive and consistent in form, usually rounded			Angular	Sharply defined; used to describe an object identified by angles																																													
Undulating	Moving sinuously like waves; wavy in appearance			Acute	Less than 90°; used to describe a sharp angle																																													
Plateau	Uniformly elevated flat to gently undulating land bounded on one or more sides by steep slopes			Parallel	Relating to or being lines, planes, or curved surfaces that are always the same distance apart and therefore never meet																																													
Ridge	A narrow landform typical of a highpoint or apex; a long narrow hilltop or range of hills			Curved	Rounded or bending in shape																																													
Valley	Low-lying area; a long low area of land, often with a river or stream running through it, that is surrounded by higher ground			Wavy	Repeatedly curving forming a series of smooth curves that go in one direction and then another																																													
Plain	A flat expanse of land; fairly flat dry land, usually with few trees			Feathered	Layered; consisting of many fine parallel strands																																													
Steep	Sloping sharply often to the extent of being almost vertical			Indistinct	Vague; lacking clarity or form																																													
Prominent	Noticeable; distinguished, eminent, or well-known			Patchy	Irregular and inconsistent;																																													
Solid	Unadulterated or unmixed; made of the same material throughout; uninterrupted			Even	Consistent and equal; lacking slope, roughness, and irregularity																																													
Broken	Lacking continuity; having an uneven surface			Uneven	Inconsistent and unequal in measurement irregular																																													
Smooth	Consistent in line and form; even textured			Stark	Bare and plain; lacking ornament or relieving features																																													
Rough	Bumpy; knobby; or uneven, coarse in texture			Clustered	Densely grouped																																													
Fine	Intricate and refined in nature			Diffuse	Spread through; scattered over an area																																													
Coarse	Harsh or rough to the touch; lacking detail			Diffuse	To make something less bright or intense																																													

15 ANNEXURE E: GENERIC LIGHT SPILLAGE MITIGATIONS

Mitigation:

- Effective light management needs to be incorporated into the design of the lighting to ensure that the visual influence is limited to the mine, without jeopardising mine operational safety and security (See lighting mitigations by The New England Light Pollution Advisory Group (NELPAG) and Sky Publishing Corp in 14.2).
- Utilisation of specific frequency LED lighting with a green hue on perimeter security fencing.
- Directional lighting on the more exposed areas of operation, where point light source is an issue.
- No use of overhead lighting and, if possible, locate the light source closer to the operation.
- If possible, the existing overhead lighting method utilised at the mine should be phased out and replaced with an alternative lighting using closer to source, directed LED technology.

Mesopic Lighting

Mesopic vision is a combination of photopic vision and scotopic vision in low, but not quite dark, lighting situations. The traditional method of measuring light assumes photopic vision and is often a poor predictor of how a person sees at night. The light spectrum optimized for mesopic vision contains a relatively high amount of bluish light and is therefore effective for peripheral visual tasks at mesopic light levels. (CIE, 2012)

The Mesopic Street Lighting Demonstration and Evaluation Report by the Lighting Research Centre (LRC) in New York found that the ‘replacement of white light sources (induction and ceramic metal halide) were tuned to optimize human vision under low light levels while remaining in the white light spectrum. Therefore, outdoor electric light sources that are tuned to how humans see under mesopic lighting conditions can be used to reduce the luminance of the road surface while providing the same, or better, visibility. Light sources with shorter wavelengths, which produce a “cooler” (more blue and green) light, are needed to produce better mesopic vision. Based on this understanding, the LRC developed a means of predicting visual performance under low light conditions. This system is called the unified photometry system. Responses to surveys conducted on new installations revealed that area residents perceived higher levels of visibility, safety, security, brightness, and colour rendering with the new lighting systems than with the standard *High-Purity Standards* (HPS) systems. The new lighting systems used 30% to 50% less energy than the HPS systems. These positive results were achieved through tuning the light source to optimize mesopic vision. Using less wattage and photopic luminance also reduces the reflectance of the light off the road surface. Light reflectance is a major contributor to light pollution (sky glow).’ (Lighting Research Center. New York. 2008)

'Good Neighbour – Outdoor Lighting'

Presented by the New England Light Pollution Advisory Group (NELPAG) (<http://cfa/www.harvard.edu/cfa/ps/nelpag.html>) and Sky & Telescope (<http://SkyandTelescope.com/>). NELPAG and Sky & Telescope support the International Dark-Sky Association (IDA) (<http://www.darksky.org/>). (NELPAG)

What is good lighting? Good outdoor lights improve visibility, safety, and a sense of security, while minimizing energy use, operating costs, and ugly, dazzling glare.

Why should we be concerned? Many outdoor lights are poorly designed or improperly aimed. Such lights are costly, wasteful, and distractingly glary. They harm the night-time environment and neighbours' property values. Light directed uselessly above the horizon creates murky skyglow — the "light pollution" that washes out our view of the stars.

Glare Here's the basic rule of thumb: If you can see the bright bulb from a distance, it's a bad light. With a good light, you see lit ground instead of the dazzling bulb. "Glare" is light that beams directly from a bulb into your eye. It hampers the vision of pedestrians, cyclists, and drivers.

Light Trespass Poor outdoor lighting shines onto neighbours' properties and into bedroom windows, reducing privacy, hindering sleep, and giving the area an unattractive, trashy look.

Energy Waste Many outdoor lights waste energy by spilling much of their light where it is not needed, such as up into the sky. This waste results in high operating costs. Each year we waste more than a billion dollars in the United States needlessly lighting the night sky.

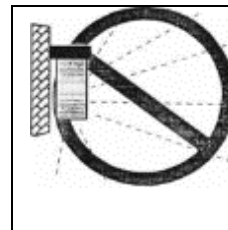
Excess Lighting Some homes and businesses are flooded with much stronger light than is necessary for safety or security.

How do I switch to good lighting?

Provide only enough light for the task at hand; don't over-light, and don't spill light off your property. Specifying enough light for a job is sometimes hard to do on paper. Remember that a full Moon can make an area quite bright. Some lighting systems illuminate areas 100 times more brightly than the full Moon! More importantly, by choosing properly shielded lights, you can meet your needs without bothering neighbours or polluting the sky.

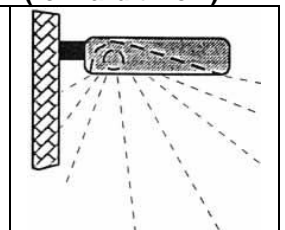
Good and Bad Light Fixtures

Typical "Wall Pack"



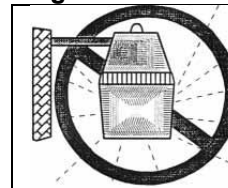
BAD
Waste light goes up and sideways

Typical "Shoe Box" (forward throw)



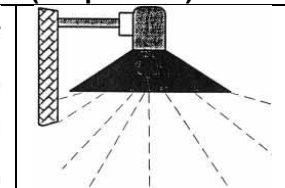
GOOD
Directs all light down

Typical "Yard Light"



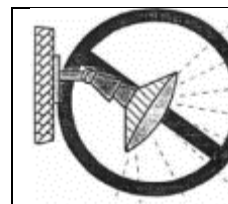
BAD
Waste light goes up and sideways

Opaque Reflector (lamp inside)



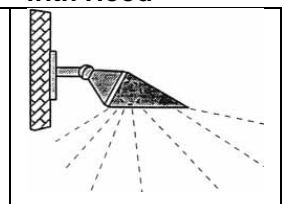
GOOD
Directs all light down

Area Flood Light



BAD
Waste light goes up and sideways

Area Flood Light with Hood

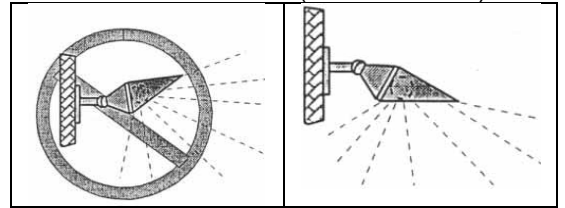


GOOD
Directs all light down

1. Aim lights down. Choose “full-cutoff shielded” fixtures that keep light from going uselessly up or sideways. Full-cutoff fixtures produce minimum glare. They create a pleasant-looking environment. They increase safety because you see illuminated people, cars, and terrain, not dazzling bulbs.
2. Install fixtures carefully to maximize their effectiveness on the targeted area and minimize their impact elsewhere. Proper aiming of fixtures is crucial. Most are aimed too high. Try to install them at night, when you can see where all the rays actually go. Properly aimed and shielded lights may cost more initially, but they save you far more in the long run. They can illuminate your target with a low-wattage bulb just as well as a wasteful light does with a high-wattage bulb.
3. If colour discrimination is not important, choose energy-efficient fixtures utilising yellowish high-pressure sodium (HPS) bulbs. If “white” light is needed, fixtures using compact fluorescent or metal-halide (MH) bulbs are more energy-efficient than those using incandescent, halogen, or mercury-vapour bulbs.

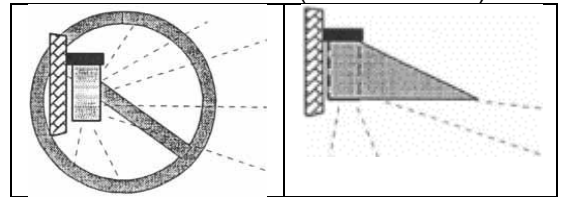
What You Can Do To Modify Existing Fixtures

Change this . . . to this (aim downward)



Floodlight:

Change this . . . to this (aim downward)



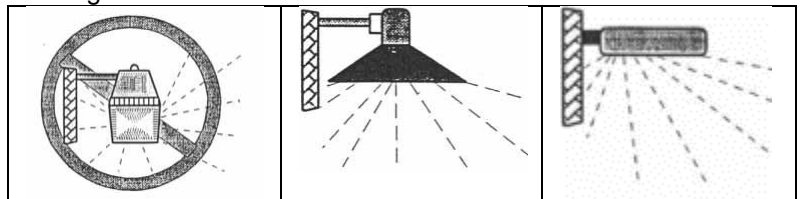
4. Where feasible, put lights on timers to turn them off each night after they are no longer needed. Put home security lights on a motion-detector switch, which turns them on only when someone enters the area; this provides a great deterrent effect!

Wall Pack

Change this . . .

to this

or this



Yard Light

Opaque Reflector

Show Box

Replace bad lights with good lights.

You'll save energy and money. You'll be a good neighbour. And you'll help preserve our view of the stars.