

# **Palaeontological Impact Assessment for the proposed Oliphant Estate residential development, Kimberley, Northern Cape Province**

**Desktop Study (Phase 1)**

**For**

**Envirolution Consulting**

**Prof Marion Bamford**

Palaeobotanist

P Bag 652, WITS 2050

Johannesburg, South Africa

[Marion.bamford@wits.ac.za](mailto:Marion.bamford@wits.ac.za)

## **Expertise of Specialist**

The Palaeontologist Consultant: Prof Marion Bamford  
Qualifications: PhD (Wits Univ, 1990); FRSSAf, ASSAf  
Experience: 32 years research; 24 years PIA studies

## **Declaration of Independence**

This report has been compiled by Professor Marion Bamford, of the University of the Witwatersrand, sub-contracted by Envirolution Consulting, Glenanda, South Africa. The views expressed in this report are entirely those of the author and no other interest was displayed during the decision making process for the Project.

Specialist: Prof Marion Bamford

Signature:

A handwritten signature in blue ink, appearing to read 'MKBamford', with a horizontal line underneath it.

## **Executive Summary**

A Palaeontological Impact Assessment was requested for the proposed housing development on Oliphant Estate, north Kimberley on Farm 18/70, immediately west of Kamfers Dam, Northern Cape Province

To comply with the regulations of the South African Heritage Resources Agency (SAHRA) in terms of Section 38(8) of the National Heritage Resources Act, 1999 (Act No. 25 of 1999) (NHRA), a desktop Palaeontological Impact Assessment (PIA) was completed for the proposed development.

The proposed site lies on the Prince Albert Formation (Early Permian, Ecca Group, Karoo Supergroup) that could potentially have marine shells, fish or fragmentary plant fossils. Therefore, a Fossil Chance Find Protocol should be added to the EMP. Based on this information it is recommended that no further palaeontological impact assessment is required unless fossils are found by the developer/ environmental officer/ other designated responsible person once excavations/drilling activities have commenced for foundations, amenities and infrastructure. As far as the palaeontology is concerned, the project should be authorised.

## Table of Contents

Expertise of Specialist.....	1
Declaration of Independence.....	1
1. Background.....	4
2. Methods and Terms of Reference .....	6
3i. Project location and geological context.....	7
3ii. Palaeontological context .....	8
4. Impact assessment .....	9
5. Assumptions and uncertainties.....	11
6. Recommendation.....	11
7. References.....	11
8. Chance Find Protocol .....	13
Appendix A (examples of fossils) .....	14
Appendix B (short CV of specialist) .....	15

# 1. Background

The open property in the northern part of Kimberley, Northern Cape Province, that lies west of Kamfers Dam and the railway line, is proposed to be developed for a residential housing project, Oliphants Estate (portions 18/70 of Roodepan Farm 70; Figures 1, 2)

A Palaeontological Impact Assessment was requested for the Oliphant Estate housing project. To comply with the regulations of the South African Heritage Resources Agency (SAHRA) in terms of Section 38(8) of the National Heritage Resources Act, 1999 (Act No. 25 of 1999) (NHRA), a desktop Palaeontological Impact Assessment (PIA) was completed for the proposed development and is reported herein.

Table 1: Specialist report requirements in terms of Appendix 6 of the EIA Regulations (amended 2017)

	<b>A specialist report prepared in terms of the Environmental Impact Regulations of 2017 must contain:</b>	<b>Relevant section in report</b>
ai	Details of the specialist who prepared the report	Appendix B
aii	The expertise of that person to compile a specialist report including a curriculum vitae	Appendix B
b	A declaration that the person is independent in a form as may be specified by the competent authority	Page 1
c	An indication of the scope of, and the purpose for which, the report was prepared	Section 1
ci	An indication of the quality and age of the base data used for the specialist report: SAHRIS palaeosensitivity map accessed – date of this report	Yes
cii	A description of existing impacts on the site, cumulative impacts of the proposed development and levels of acceptable change	Section 5
d	The date and season of the site investigation and the relevance of the season to the outcome of the assessment	N/A
e	A description of the methodology adopted in preparing the report or carrying out the specialised process	Section 2
f	The specific identified sensitivity of the site related to the activity and its associated structures and infrastructure	Section 4
g	An identification of any areas to be avoided, including buffers	N/A
h	A map superimposing the activity including the associated structures and infrastructure on the environmental sensitivities of the site including areas to be avoided, including buffers;	N/A
i	A description of any assumptions made and any uncertainties or gaps in knowledge;	Section 5

j	A description of the findings and potential implications of such findings on the impact of the proposed activity, including identified alternatives, on the environment	Section 4
k	Any mitigation measures for inclusion in the EMPr	Section 8, Appendix A
l	Any conditions for inclusion in the environmental authorisation	N/A
m	Any monitoring requirements for inclusion in the EMPr or environmental authorisation	Section 8, Appendix A
ni	A reasoned opinion as to whether the proposed activity or portions thereof should be authorised	Section 6
nii	If the opinion is that the proposed activity or portions thereof should be authorised, any avoidance, management and mitigation measures that should be included in the EMPr, and where applicable, the closure plan	Sections 6, 8
o	A description of any consultation process that was undertaken during the course of carrying out the study	N/A
p	A summary and copies if any comments that were received during any consultation process	N/A
q	Any other information requested by the competent authority.	N/A

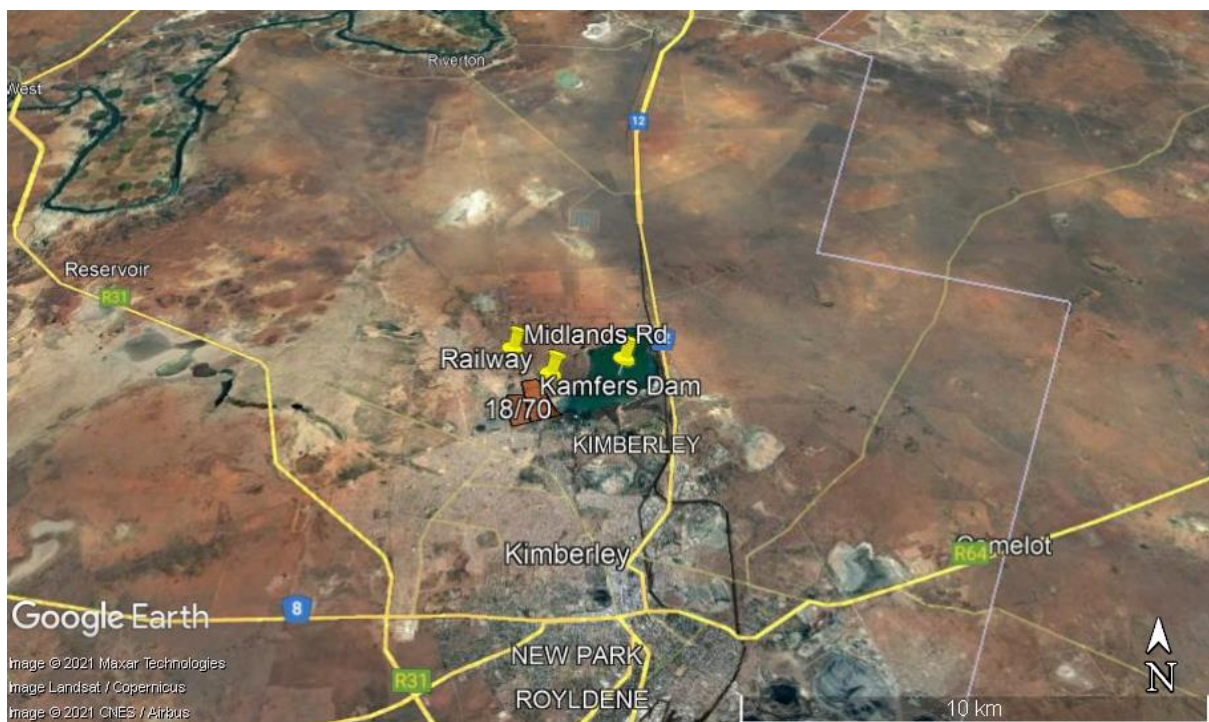


Figure 1: Google Earth map of the proposed Oliphant Estate housing project in the northern part of Kimberley to show the site relative to other landmarks. Map supplied by Envirolution.



Figure 2: Detailed annotated Google Earth map to show the two adjacent sections of the Oliphant Estate Housing project in the north of Kimberley, shown by the brown polygons.

## 2. Methods and Terms of Reference

The Terms of Reference (ToR) for this study were to undertake a PIA and provide feasible management measures to comply with the requirements of SAHRA.

The methods employed to address the ToR included:

1. Consultation of geological maps, literature, palaeontological databases, published and unpublished records to determine the likelihood of fossils occurring in the affected areas. Sources included records housed at the Evolutionary Studies Institute at the University of the Witwatersrand and SAHRA databases;
2. Where necessary, site visits by a qualified palaeontologist to locate any fossils and assess their importance (*not applicable to this assessment*);
3. Where appropriate, collection of unique or rare fossils with the necessary permits for storage and curation at an appropriate facility (*not applicable to this assessment*); and
4. Determination of fossils' representivity or scientific importance to decide if the fossils can be destroyed or a representative sample collected (*not applicable to this assessment*).

## 3. Geology and Palaeontology

- i. Project location and geological context

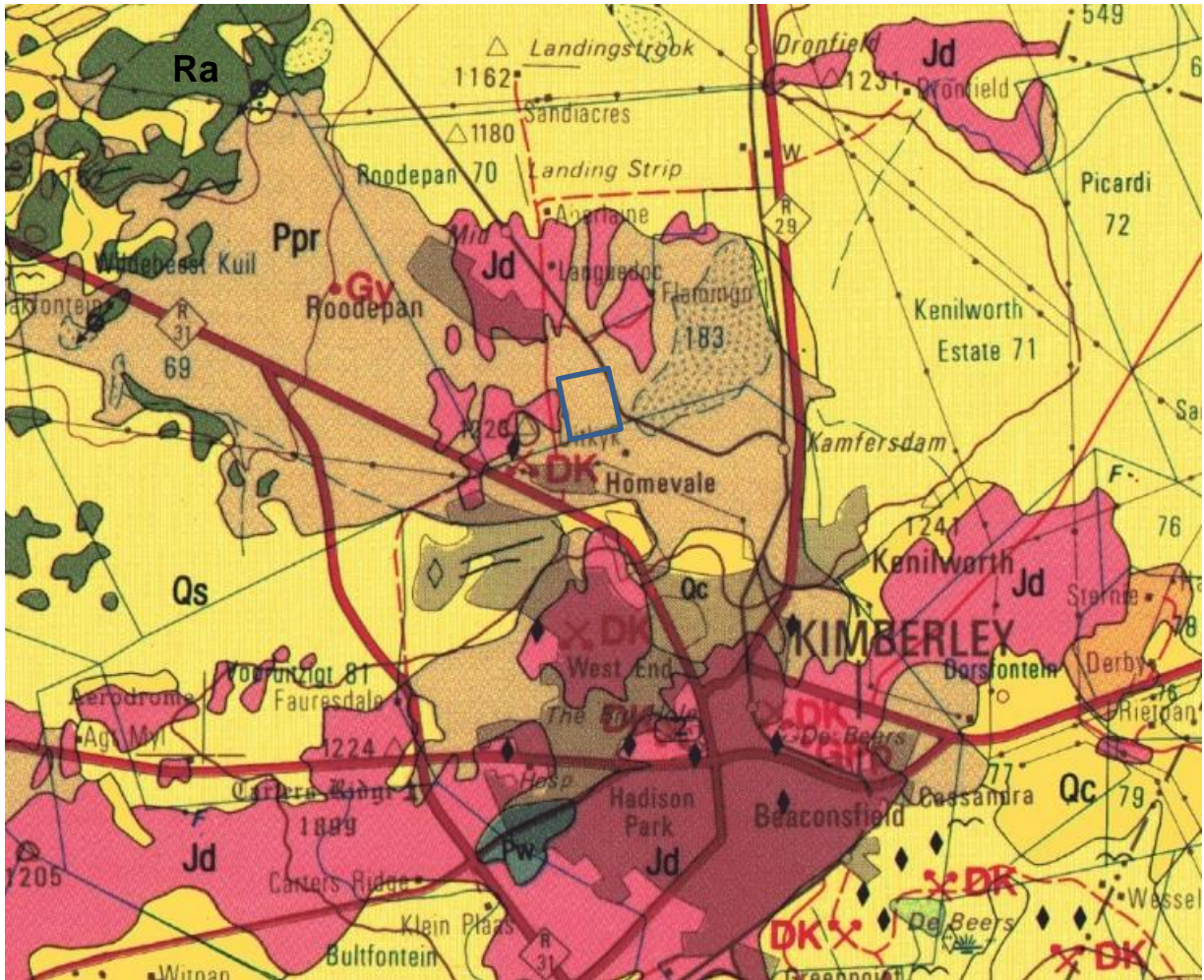


Figure 3: Geological map of the area around Kimberley with the proposed Oliphant Estate housing project shown within the blue rectangle. Abbreviations of the rock types are explained in Table 2. Map enlarged from the Geological Survey 1: 250 000 map 2824 Kimberley.

Table 2: Explanation of symbols for the geological map and approximate ages (Johnson et al., 2006; Meintjies and van der Westhuizen, 2018; van der Westhuizen et al., 2006). SG = Supergroup; Fm = Formation; Ma = million years; grey shading = formations impacted by the project.

Symbol	Group/Formation	Lithology	Approximate Age
Qs	Quaternary Kalahari sands	Alluvium, aeolian sand,	Quaternary, last 1 Ma to present
Qc	Quaternary, Kalahari sands	calcrete	Quaternary, last 1 Ma to present
Jd	Jurassic dykes	Dolerite dykes, intrusive	Jurassic, approx. 180 Ma
Ppr	Prince Albert Fm, Ecca Group, Karoo SG	Shale	Early Permian, ca 290 Ma
Ra	Allanridge Fm, Pniel Group, (was Platberg Group), Ventersdorp SG	Amygdaloidal lava, porphyritic lava and pyroclastic rocks	Neoproterozoic, ca 2740 Ma



Kimberley lies in the north central margin of the Karoo Basin with outcrops of the unconformably underlying Ventersdorp Supergroup, in particular the Allanridge Formation (Figure 3). In turn, much younger sands of the Kalahari Group overlie much of the Karoo sequence.

The Karoo Supergroup rocks cover a very large proportion of South Africa and represent some 120 million years (300 – 183 Ma). These deep to shallow water sediments have preserved a diversity of fossil plants, insects, vertebrates and invertebrates.

During the Carboniferous Period South Africa was part of the huge continental landmass known as Gondwanaland and it was positioned over the South Pole. As a result, there were several ice sheets that formed and melted, and covered most of South Africa. Gradual melting of the ice as the continental mass moved northwards and the earth warmed, formed fine-grained sediments in the large inland sea. These are the oldest rocks in the system and are exposed around the outer part of the ancient Karoo Basin, and are known as the Dwyka Group. They comprise tillites, diamictites, mudstones, siltstones and sandstones that were deposited as the basin filled. This group has been divided into two formations with Elandsvlei Formation occurring throughout the basin and the upper Mbizane Formation occurring only in the Free State and KwaZulu Natal (Johnson et al., 2006).

Overlying the Dwyka Group rocks are rocks of the Ecca Group that are Early Permian in age. There are eleven formations recognised in this group but they do not all extend throughout the Karoo Basin. In the west and central part are the following formations, from base upwards: **Prince Albert Formation**, Whitehill Formation, Collingham Formation, Laingsburg / Ripon Formations, Tierberg / Fort Brown Formations, and Waterford Formation. All of these sediments have varying proportions of sandstones, mudstones, shales and siltstones and represent shallow to deep water settings, deltas, rivers, streams and overbank depositional environments.

Overlying the Ecca Group are the rocks of the Beaufort Group that has been divided into the lower Adelaide Subgroup for the Upper Permian strata, and the Tarkastad Subgroup for the Early to Middle Triassic strata. As with the older Karoo sediments, the formations vary across the Karoo Basin. The Stormberg Group forms the upper layers of the Karoo Supergroup and is capped by the Drakensberg basalts. At around the same time that the basalts were erupting numerous dykes and sills intruded through the Karoo sediments. They are of Jurassic age and are known as the Jurassic dolerites (Figure 3, Table 2)

## ii. Palaeontological context

The palaeontological sensitivity of the area under consideration is presented in Figure 4. The site for development is in the Prince Albert Formation. West and east of 24°E, the Ecca Group comprises the basal **Prince Albert Formation**, in the southwestern half of the Karoo Basin, and comprises shales and silty shales. In the west where it overlies the Dwyka Group there are fining upward sequences of sandstones, siltstones, silty shales and rhythmites.

Marine fossils such as cephalopods, lamellibranches and brachiopods, and fragmentary plant fossils and palaeoniscoid fish remains (Douglas area; Anderson and McLachlan, 1976). The southern facies of the Prince Albert Formation has darker shales, chert and carbonaceous nodules produced under a reducing environment, with rare marine fossil fragments (Johnson et al., 2006).

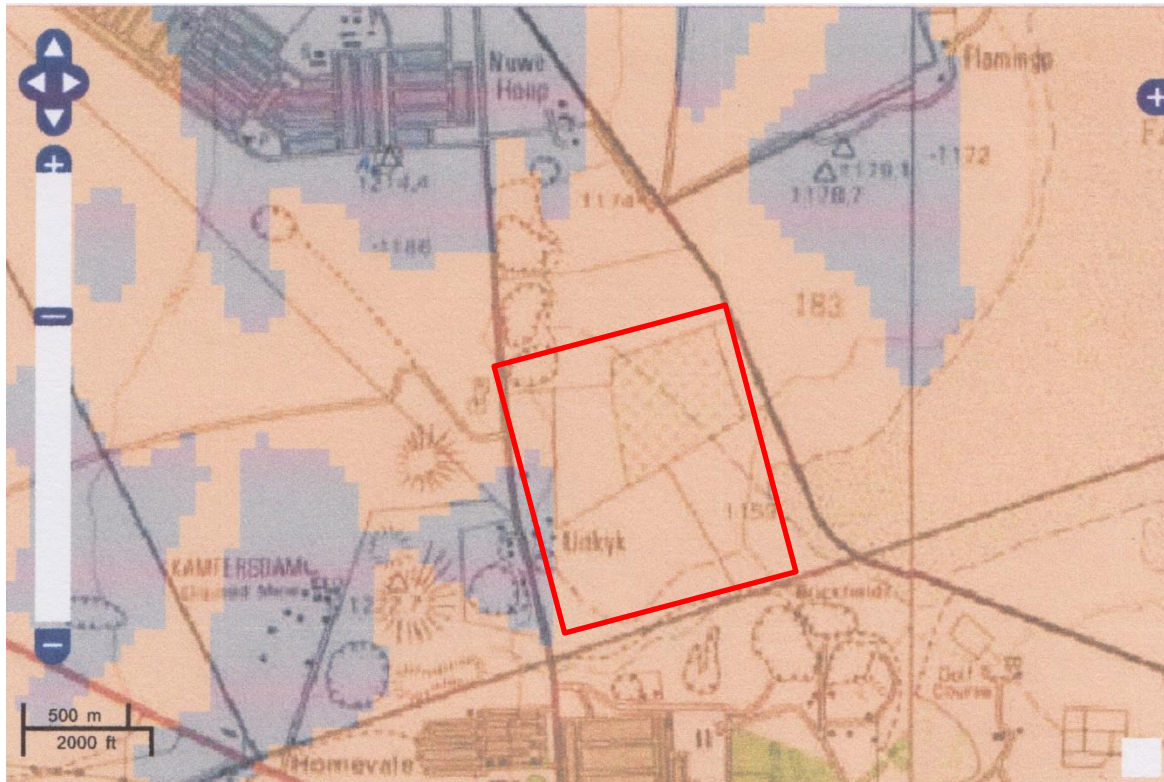


Figure 4: Palaeosensitivity map for the site for the proposed for the Oliphant Estate housing development shown within the red rectangle. Background colours indicate the following degrees of sensitivity: red = very highly sensitive; orange/yellow = high; green = moderate; blue = low; grey = insignificant/zero.

From the SAHRIS map above the area is indicated as highly sensitive (orange) so a desktop study is required. Fossils recorded to date from this formation are very sporadic and the nearest site is near Douglas.

#### 4. Impact assessment

An assessment of the potential impacts to possible palaeontological resources considers the criteria encapsulated in Table 3:

**TABLE 3A: CRITERIA FOR ASSESSING IMPACTS**

<b>PART A: DEFINITION AND CRITERIA</b>		
<b>Criteria for ranking of the SEVERITY/NATURE of environmental impacts</b>	<b>H</b>	Substantial deterioration (death, illness or injury). Recommended level will often be violated. Vigorous community action.
	<b>M</b>	Moderate/ measurable deterioration (discomfort). Recommended level will occasionally be violated. Widespread complaints.
	<b>L</b>	Minor deterioration (nuisance or minor deterioration). Change not measurable/ will remain in the current range. Recommended level will never be violated. Sporadic complaints.
	<b>L+</b>	Minor improvement. Change not measurable/ will remain in the current range. Recommended level will never be violated. Sporadic complaints.
	<b>M+</b>	Moderate improvement. Will be within or better than the recommended level. No observed reaction.
	<b>H+</b>	Substantial improvement. Will be within or better than the recommended level. Favourable publicity.
<b>Criteria for ranking the DURATION of impacts</b>	<b>L</b>	Quickly reversible. Less than the project life. Short term
	<b>M</b>	Reversible over time. Life of the project. Medium term
	<b>H</b>	Permanent. Beyond closure. Long term.
<b>Criteria for ranking the SPATIAL SCALE of impacts</b>	<b>L</b>	Localised - Within the site boundary.
	<b>M</b>	Fairly widespread – Beyond the site boundary. Local
	<b>H</b>	Widespread – Far beyond site boundary. Regional/ national
<b>PROBABILITY (of exposure to impacts)</b>	<b>H</b>	Definite/ Continuous
	<b>M</b>	Possible/ frequent
	<b>L</b>	Unlikely/ seldom

**TABLE 3B: IMPACT ASSESSMENT**

<b>PART B: ASSESSMENT</b>		
<b>SEVERITY/NATURE</b>	<b>H</b>	-
	<b>M</b>	-
	<b>L</b>	Deepwater shales do not preserve fossils but they might be preserved in a shallow water setting. So far there are no records from the Prince Albert Fm of plant or animal fossils in this region so it is very unlikely that fossils occur on the site. The impact would be very unlikely.
	<b>L+</b>	-
	<b>M+</b>	-
	<b>H+</b>	-
<b>DURATION</b>	<b>L</b>	-
	<b>M</b>	-
	<b>H</b>	Where manifest, the impact will be permanent.
<b>SPATIAL SCALE</b>	<b>L</b>	Since the only possible fossils within the area would be fossil plant fragments from the <i>Glossopteris</i> flora in the shales or marine shells, the spatial scale will be localised within the site boundary.
	<b>M</b>	-
	<b>H</b>	-
<b>PROBABILITY</b>	<b>H</b>	-
	<b>M</b>	-
	<b>L</b>	It is extremely unlikely that any fossils would be found in the loose soils and sand that will be excavated for foundations. Nonetheless, a Fossil Chance Find Protocol should be added to the eventual EMPr.

Based on the nature of the project, surface activities may impact upon the fossil heritage if preserved in the development footprint. The geological structures suggest that the rocks are

the correct age and type to preserve fossils, but they are not common. Since there is a small chance that fossils from the Prince Albert Formation may be disturbed, a Fossil Chance Find Protocol has been added to this report. Taking account of the defined criteria, the potential impact to fossil heritage resources is extremely low.

## 5. Assumptions and uncertainties

Based on the geology of the area and the palaeontological record as we know it, it can be assumed that the formation and layout of the dolomites, sandstones, shales and sands are typical for the country and some do contain fossil plant, insect, invertebrate and vertebrate material. The soils and sands of the Quaternary period would not preserve fossils.

## 6. Recommendation

Based on experience and the lack of any previously recorded fossils from the area, it is extremely unlikely that any fossils would be preserved in the soils and sands of the Quaternary. There is a very small chance that fossils may occur in the shales of the early Permian Prince Albert Formation so a Fossil Chance Find Protocol should be added to the EMPr. If fossils are found by the developer, environmental officer, or other responsible person once excavations for foundations and amenities have commenced then they should be rescued and a palaeontologist called to assess and collect a representative sample.

## 7. References

- Anderson, A.M., McLachlan, I.R., 1976. The plant record in the Dwyka and Ecca Series (Permian) of the south-western half of the great Karoo Basin, South Africa. *Palaeontologia africana* 19, 31-42.
- Anderson, J.M., Anderson, H.M., 1985. *Palaeoflora of Southern Africa: Prodrum of South African megafloras, Devonian to Lower Cretaceous*. A.A. Balkema, Rotterdam. 423 pp.
- Johnson, M.R., van Vuuren, C.J., Visser, J.N.J., Cole, D.I., Wickens, H.deV., Christie, A.D.M., Roberts, D.L., Brandl, G., 2006. Sedimentary rocks of the Karoo Supergroup. In: Johnson, M.R., Anhaeusser, C.R. and Thomas, R.J., (Eds). *The Geology of South Africa*. Geological Society of South Africa, Johannesburg / Council for Geoscience, Pretoria. Pp 461 – 499.
- Meintjes, P.G., van der Westhuizen, W.A., 2018. Stratigraphy and Geochemistry of the Goedgenoeg and Makwassie Formations, Ventersdorp Supergroup, in the Bothaville area of South Africa. *South African Journal of Geology* 121(4), 339-362.
- Plumstead, E.P., 1969. Three thousand million years of plant life in Africa. *Geological Society of southern Africa, Annexure to Volume LXXII*. 72pp + 25 plates.

Van der Westhuizen, W.A., de Bruijn, H., Meintjes, P.G., 2006. The Ventersdorp Supergroup. In: Johnson, M.R., Anhaeusser, C.R. and Thomas, R.J., (Eds). The Geology of South Africa. Geological Society of South Africa, Johannesburg / Council for Geoscience, Pretoria. pp 187-208.

## 8. Chance Find Protocol

### **Monitoring Programme for Palaeontology – to commence once the excavations / drilling activities begin.**

1. The following procedure is only required if fossils are seen on the surface and when drilling/excavations commence.
2. When excavations begin the rocks and must be given a cursory inspection by the environmental officer or designated person. Any fossiliferous material (plants, insects, bone, coal) should be put aside in a suitably protected place. This way the project activities will not be interrupted.
3. Photographs of similar fossils must be provided to the developer to assist in recognizing the fossil plants, vertebrates, invertebrates or trace fossils in the shales and mudstones (for example see Figures 5-6). This information will be built into the EMP's training and awareness plan and procedures.
4. Photographs of the putative fossils can be sent to the palaeontologist for a preliminary assessment.
5. If there is any possible fossil material found by the developer/environmental officer then the qualified palaeontologist sub-contracted for this project, should visit the site to inspect the selected material and check the dumps where feasible.
6. Fossil plants or vertebrates that are considered to be of good quality or scientific interest by the palaeontologist must be removed, catalogued and housed in a suitable institution where they can be made available for further study. Before the fossils are removed from the site a SAHRA permit must be obtained. Annual reports must be submitted to SAHRA as required by the relevant permits.
7. If no good fossil material is recovered then no site inspections by the palaeontologist will be necessary. A final report by the palaeontologist must be sent to SAHRA once the project has been completed and only if there are fossils.
8. If no fossils are found and the excavations have finished then no further monitoring is required.

### **Appendix A – Examples of fossils from the Prince Albert Formation.**

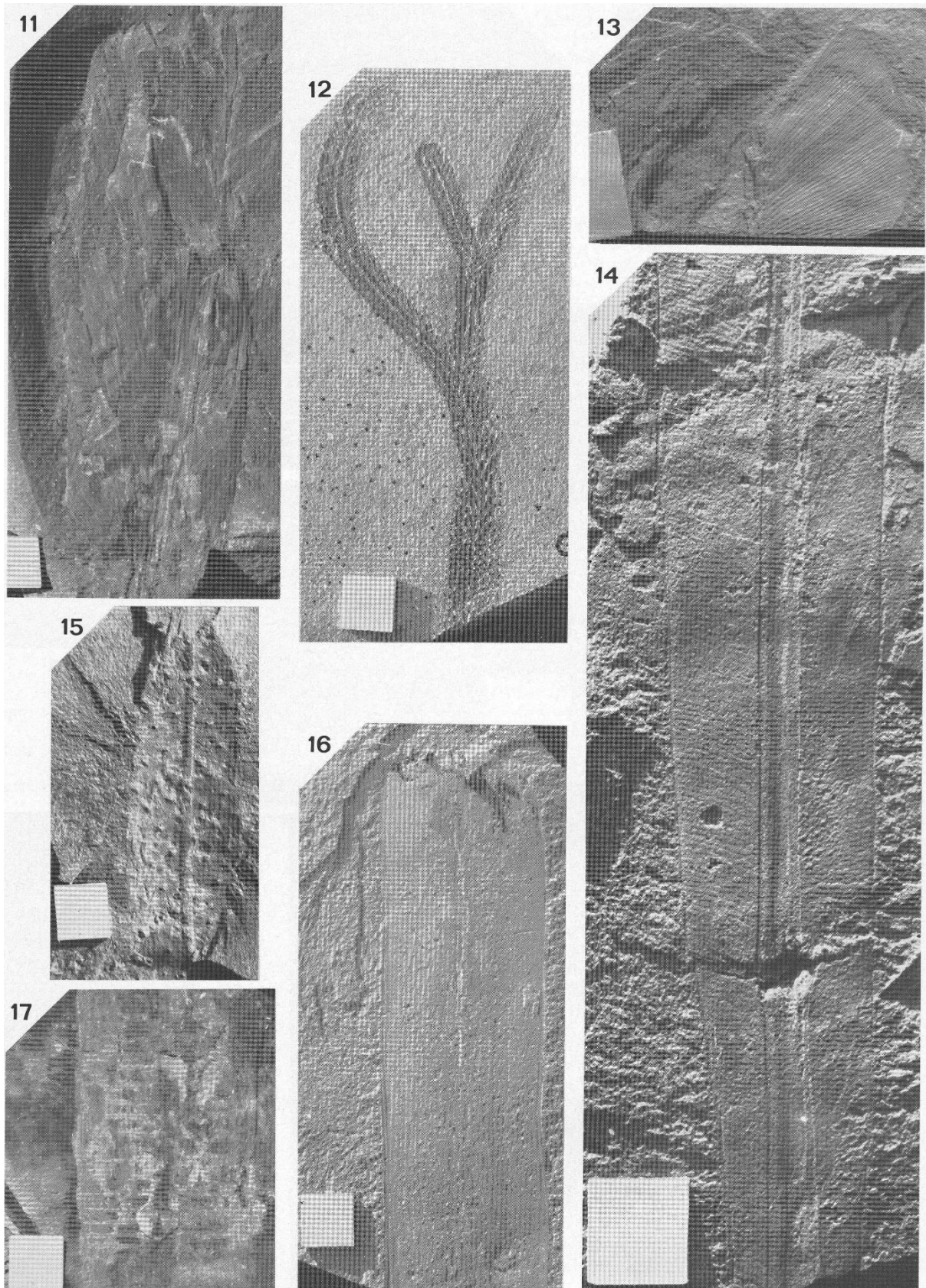
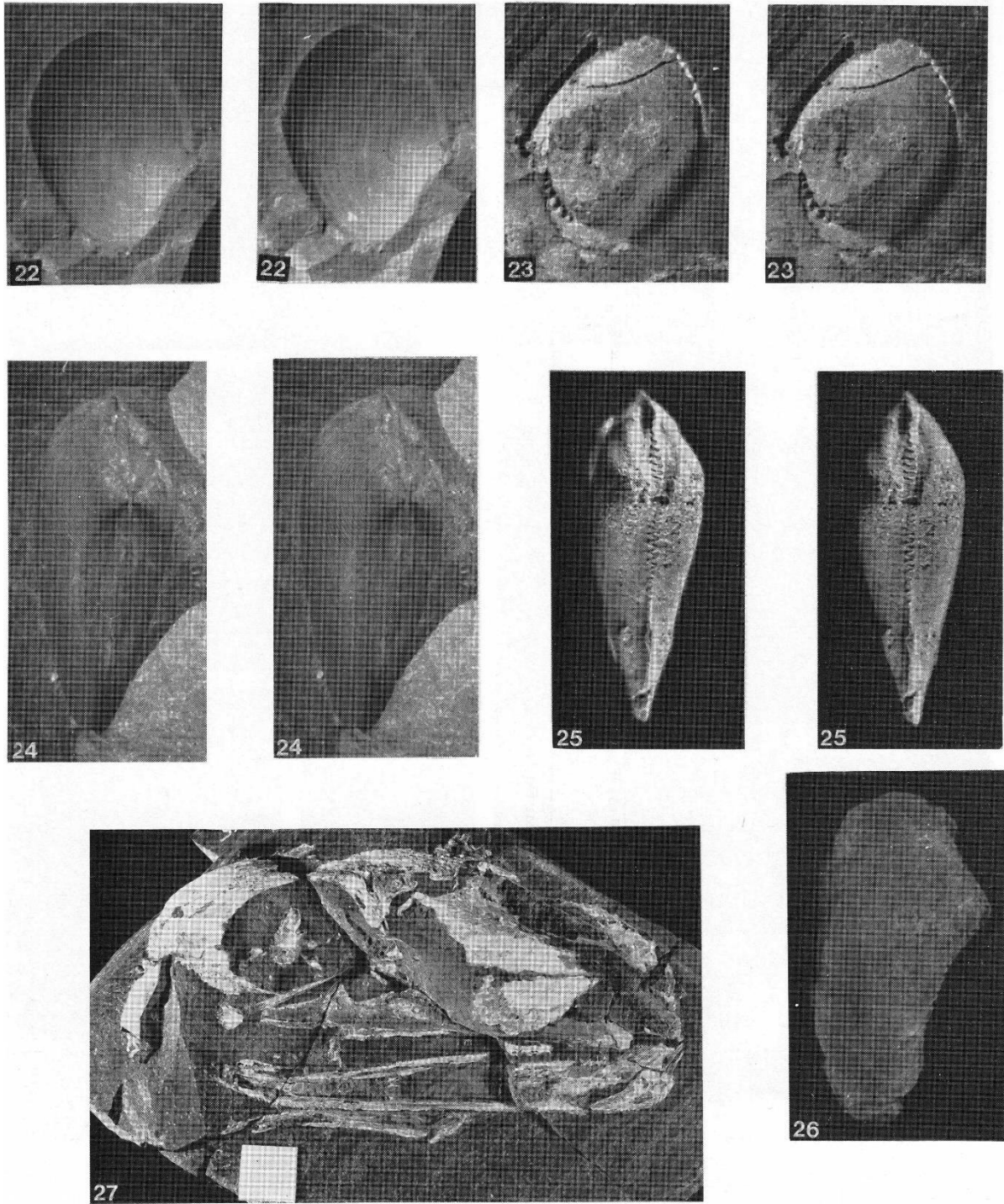


Figure 5: From Anderson and McLachlan, 1976, near Douglas. Fossil plants of the *Glossopteris* flora



*Blaauw Krantz fauna*

Figs. 22–26: Lamellibranchs (x5).

Fig. 22—*Nuculopsis* sp. External mould. Lateral view, I.39 (Stereopair).

Fig. 23—*Nuculopsis* sp. Internal mould. Lateral view, I.39 (Stereopair).

Fig. 24—*Phestia* sp. External mould. Dorsal surface I.38 (Stereopair).

Fig. 25—*Phestia* sp. Internal mould. Dorsal view I.38 (Stereopair).

Fig. 26—*Phestia* sp. Internal mould. Lateral view I.38.

Fig. 27: Palaeoniscoid fish skull in concretion. Lateral view P.15 (x1).

Figure 6: From Anderson and McLachlan, (1976).

## Appendix B – Details of specialist

### Curriculum vitae (short) - Marion Bamford PhD July 2021

#### i) Personal details

Surname : **Bamford**  
First names : **Marion Kathleen**  
Present employment : Professor; Director of the Evolutionary Studies Institute.  
Member Management Committee of the NRF/DST Centre of Excellence Palaeosciences, University of the Witwatersrand, Johannesburg, South Africa-  
Telephone : +27 11 717 6690  
Fax : +27 11 717 6694  
Cell : 082 555 6937  
E-mail : [marion.bamford@wits.ac.za](mailto:marion.bamford@wits.ac.za) ; [marionbamford12@gmail.com](mailto:marionbamford12@gmail.com)

#### ii) Academic qualifications

Tertiary Education: All at the University of the Witwatersrand:

1980-1982: BSc, majors in Botany and Microbiology. Graduated April 1983.

1983: BSc Honours, Botany and Palaeobotany. Graduated April 1984.

1984-1986: MSc in Palaeobotany. Graduated with Distinction, November 1986.

1986-1989: PhD in Palaeobotany. Graduated in June 1990.

#### iii) Professional qualifications

*Wood Anatomy Training (overseas as nothing was available in South Africa):*

1994 - Service d'Anatomie des Bois, Musée Royal de l'Afrique Centrale, Tervuren, Belgium, by Roger Dechamps

1997 - Université Pierre et Marie Curie, Paris, France, by Dr Jean-Claude Koeniguer

1997 - Université Claude Bernard, Lyon, France by Prof Georges Barale, Dr Jean-Pierre Gros, and Dr Marc Philippe

#### iv) Membership of professional bodies/associations

Palaeontological Society of Southern Africa

Royal Society of Southern Africa - Fellow: 2006 onwards

Academy of Sciences of South Africa - Member: Oct 2014 onwards

International Association of Wood Anatomists - First enrolled: January 1991

International Organization of Palaeobotany – 1993+

Botanical Society of South Africa

South African Committee on Stratigraphy – Biostratigraphy - 1997 - 2016



SASQUA (South African Society for Quaternary Research) – 1997+  
 PAGES - 2008 –onwards: South African representative  
 ROCEEH / WAVE – 2008+  
 INQUA – PALCOMM – 2011+onwards

### **vii) Supervision of Higher Degrees**

All at Wits University

Degree	Graduated/completed	Current
Honours	11	0
Masters	10	4
PhD	11	4
Postdoctoral fellows	10	5

### **viii) Undergraduate teaching**

Geology II – Palaeobotany GEOL2008 – average 65 students per year  
 Biology III – Palaeobotany APES3029 – average 25 students per year  
 Honours – Evolution of Terrestrial Ecosystems; African Plio-Pleistocene Palaeoecology;  
 Micropalaeontology – average 2-8 students per year.

### **ix) Editing and reviewing**

Editor: *Palaeontologia africana*: 2003 to 2013; 2014 – Assistant editor  
 Guest Editor: *Quaternary International*: 2005 volume  
 Member of Board of Review: *Review of Palaeobotany and Palynology*: 2010 –

Review of manuscripts for ISI-listed journals: 25 local and international journals

## **x) Palaeontological Impact Assessments**

Selected – list not complete:

- Thukela Biosphere Conservancy 1996; 2002 for DWAF
- Vioolsdrift 2007 for Xibula Exploration
- Rietfontein 2009 for Zitholele Consulting
- Bloeddrift-Baken 2010 for TransHex
- New Kleinfontein Gold Mine 2012 for Prime Resources (Pty) Ltd.
- Thabazimbi Iron Cave 2012 for Professional Grave Solutions (Pty) Ltd
- Delmas 2013 for Jones and Wagener
- Klipfontein 2013 for Jones and Wagener
- Platinum mine 2013 for Lonmin
- Syferfontein 2014 for Digby Wells
- Canyon Springs 2014 for Prime Resources
- Kimberley Eskom 2014 for Landscape Dynamics
- Yzermyne 2014 for Digby Wells
- Matimba 2015 for Royal HaskoningDV
- Commissiekraal 2015 for SLR
- Harmony PV 2015 for Savannah Environmental

- Glencore-Tweefontein 2015 for Digby Wells
- Umkomazi 2015 for JLB Consulting
- Ixia coal 2016 for Digby Wells
- Lambda Eskom for Digby Wells
- Alexander Scoping for SLR
- Perseus-Kronos-Aries Eskom 2016 for NGT
- Mala Mala 2017 for Henwood
- Modimolle 2017 for Green Vision
- Klipoortjie and Finaalspan 2017 for Delta BEC
- Ledjadja borrow pits 2018 for Digby Wells
- Lungile poultry farm 2018 for CTS
- Olienhout Dam 2018 for JP Celliers
- Isondlo and Kwasobabili 2018 for GCS
- Kanakies Gypsum 2018 for Cabanga
- Nababeep Copper mine 2018
- Glencore-Mbali pipeline 2018 for Digby Wells
- Remhoogte PR 2019 for A&HAS
- Bospoort Agriculture 2019 for Kudzala
- Overlooked Quarry 2019 for Cabanga
- Richards Bay Powerline 2019 for NGT
- Eilandia dam 2019 for ACO
- Eastlands Residential 2019 for HCAC
- Fairview MR 2019 for Cabanga
- Graspan project 2019 for HCAC
- Lieliefontein N&D 2019 for EnviroPro
- Skeerpoort Farm Mast 2020 for HCAC
- Vulindlela Eco village 2020 for 1World
- KwaZamakhule Township 2020 for Kudzala
- Sunset Copper 2020 for Digby Wells
- McCarthy-Salene 2020 for Prescali
- VLNR Lodge 2020 for HCAC
- Madadeni mixed use 2020 for EnviroPro
- Frankfort-Windfield Eskom Powerline 2020 for 1World
- Beaufort West PV Facility 2021 for ACO Associates
- Copper Sunset MR 2021 for Digby Wells
- Sannaspos PV facility 2021 for CTS Heritage
- Smithfield-Rouxville-Zastron PL 2021 for TheroServe

#### **xi) Research Output**

Publications by M K Bamford up to July 2021 peer-reviewed journals or scholarly books: over 150 articles published; 5 submitted/in press; 10 book chapters.

Scopus h-index = 29; Google scholar h-index = 35; -i10-index = 92

Conferences: numerous presentations at local and international conferences.

#### **xii) NRF Rating**

NRF Rating: B-2 (2016-2020)

NRF Rating: B-3 (2010-2015)

NRF Rating: B-3 (2005-2009)

NRF Rating: C-2 (1999-2004)