

BACKGROUND INFORMATION DOCUMENT
ENVIRONMENTAL RELATED AUTHORISATIONS FOR THE PROPOSED
DELMORE PARK EXTENSION 8 BULK SERVICES PROJECT IN
BOKSBURG, GAUTENG



INTRODUCTION AND BACKGROUND

The City of Ekurhuleni has been granted environmental authorisation by the Gauteng Department of Agriculture and Rural Development (GDARD) to develop the proposed Delmore Park Extension 8 housing development in Boksburg (Reference number GAUT 002/18-19/E2183). The proposed development requires bulk services, including water and sewer lines. Prior to construction of these pipelines, environmental authorisation and a Water Use Licence need to be applied for.

PURPOSE OF THIS DOCUMENT

This Background information document (BID) provides potential stakeholders with information about the proposed project, the regulatory processes and how to become involved in this process.

Alta van Dyk Environmental Consultants cc (AVDE) has been appointed as the Environmental Assessment Practitioner (EAP) for this project to undertake the environmental related authorisations and associated public participation process.

You are invited to register as in Interested and Affected Party (I&AP) for this project and to comment or raise any issue of concern. To register for the proposed project and receive additional notifications, please complete the enclosed registration form, and send to:

Suzanne van Rooy
Alta van Dyk Environmental Consultants cc (AVDE)
Email: suzanne@avde.co.za
Tel: 012 940 9457
Fax: 086 634 3967
Postal address: Private Bag X 1007, Lyttelton, 0140

PROJECT LOCATION

The proposed project is located in Boksburg, Gauteng Province within Wards 33 and 93 of the City of Ekurhuleni. Based on the National Environmental Screening Tool, the bulk water line transects portions 40, 45, 235, 369, 521, 524, 525, and 533 of the farm Driefontein 85 IR. The bulk sewer line transects portions 24, 266, 299, 396, 397, 521, 530 and 551 of the farm Driefontein 85 IR.

DESCRIPTION OF THE PROPOSED PROJECT

The proposed bulk services project entails the construction of a bulk sewer pipeline and bulk water pipeline to provide services to the approved Delmore Park Extension 8 Development. The proposed Delmore Park Extension 8 Development is situated on the farm Driefontein 85 IR, portion 394, 397 and 521, in Boksburg, Gauteng Province. The development will consist of 2930 low-cost residential units in multiple-storey buildings and other uses such as educational, business, health, public transport and community facilities. The proposed bulk services pipelines will, where possible, run on the road reserve, or on open spaces. Refer to Figure 1 for a map of the project location.

The proposed bulk water supply line will be 1 600 m in length and will run from Main Reef Road (R29) in a southern direction along Station Road, underneath the railway line where it will connect with the Delmore Park Extension 8 pipe network.

The sewer line will include a new bulk sewer line (Delmore Park Main Branch) and replacement of a section of the existing Lilianton Main Outfall Sewer.

The new sewer line will be 2 000 m in length and will run from the existing Manhole 13 on the Lilianton Main Outfall Sewer, where it will cross a wetland and run along the eastern edge of Delmore Park Extension 7 and 2 in a northerly direction, make a west turn along the northern edge of Delmore Park Extension 2 and continue in a westerly direction to the north east point of Delmore Park Extension 1. This new Delmore Park Main Branch will collect sewerage from Delmore Park Extensions 1, 8, 2 and 7.

The section to be replaced on the Lilianton Main Outfall Sewer is 600 m in length and runs from Manhole 6 on the Lilianton Main Outfall Sewer in a southerly direction to Manhole 14.

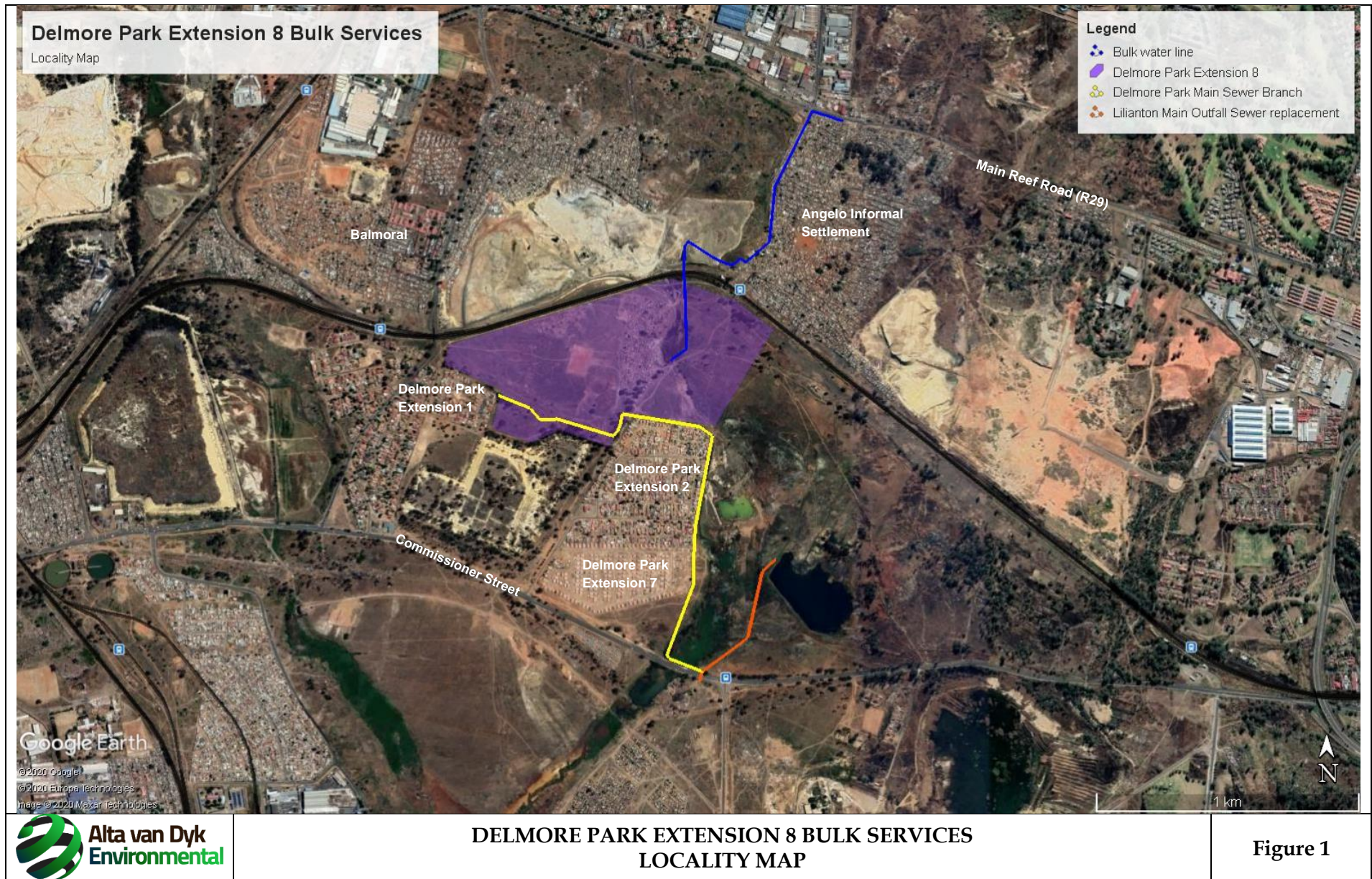
LEGISLATIVE REQUIREMENTS

The environmental related authorisations required for the proposed bulk services are as follows:

- A Basic Assessment process in terms of the National Environmental Management Act (Act 107 of 1998) (NEMA) and the Environmental Impact Assessment (EIA) Regulations. The competent authority for this process is the Gauteng Department of Agriculture and Rural Development (GDARD).
- A Water Use Licence Application (WULA) in terms of the National Water Act (Act 36 of 1998). The competent authority for this process is the Department of Water and Sanitation (DWS).

The environmental related authorisation processes are running concurrently and require the involvement of stakeholders. Therefore, a single integrated stakeholder engagement process will be undertaken in compliance with all legislation. The environmental authorisation is illustrated in Figure 2.

During the Basic Assessment process, phase, potential impacts are identified, and management measures are proposed to mitigate negative impacts and enhance positive impacts. A Basic Assessment Report will be compiled and made available for public comment for a period of 30 days. Once the public comment period is concluded, the Basic Assessment Report will be updated with the comments received from stakeholders and will be submitted to GDARD for decision making.



BASIC ASSESSMENT PROCESS

Figure 2 provides a schematic outline of the Basic Assessment process that will be followed.

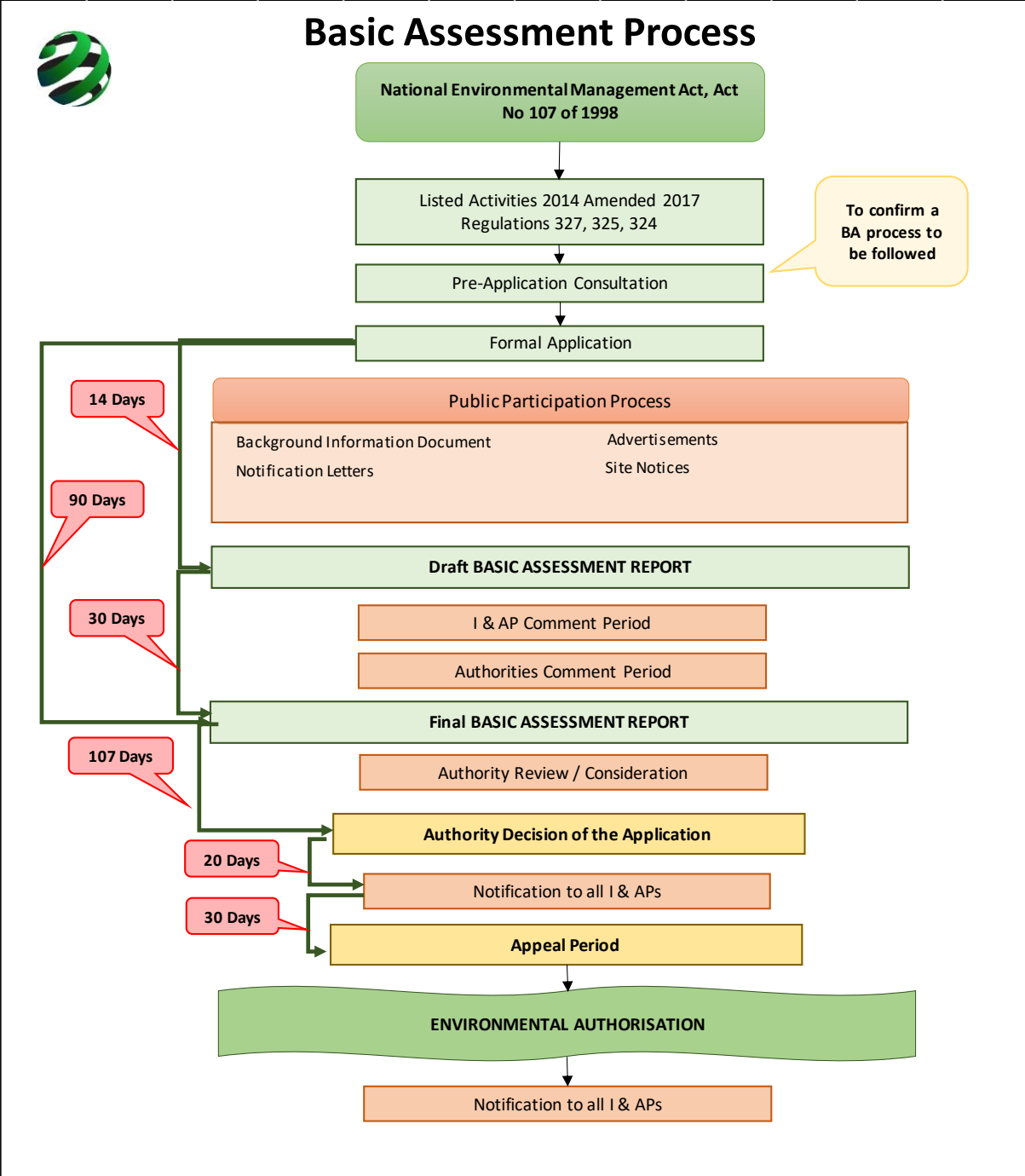


Figure 1: Basic Assessment Process

YOUR COMMENT IS IMPORTANT

Your comments and suggestions on any aspect of the proposed project, including the technical and stakeholder engagement processes, will ultimately assist the authorities in their decision-making process. If you wish to receive further notifications and documentation regarding the proposed Delmore Park Extension 8 Bulk Services project, kindly complete the attached registration form, and send to Alta van Dyk Environmental Consultants (contact details on the front page).

