



Photo: ACCIONA

---

## AEP KATHU SOLAR

---



**Preliminary Water  
Consumption Study,  
November 2015**

**Prepared for:**  
Mr Lategan Botha  
Gamagara Local Municipality  
[lateganb@gamagara.co.za](mailto:lateganb@gamagara.co.za)

**Contact Person:**  
David Peinke  
Atlantic Energy Partners  
101, Block A, West Quay Building  
7 West Quay Road, Waterfront  
Cape Town, 8000  
F: + 27 (0) 86 514 8184  
M: + 27 (0) 84 401 9015  
E: [david@atlanticep.com](mailto:david@atlanticep.com)

**Date:** 19 November 2015

## DOCUMENT HISTORY


---

---

### REVISION HISTORY

Revision No	Revision Date	Author
Rev 1.0	2015.11.18	Sonia Miszczak

### APPROVAL FOR RELEASE

Name	Title	Signed
David Peinke	Director	

### DISTRIBUTION

Name	Company
David Peinke	AEP
Dale Holder	Cape EAPrac

## TABLE OF CONTENTS

---

<b>DOCUMENT HISTORY</b> .....	<b>II</b>
<b>TABLE OF CONTENTS</b> .....	<b>III</b>
<b>LIST OF ACRONYMS</b> .....	<b>IV</b>
<b>1. PURPOSE AND SCOPE</b> .....	<b>1</b>
<b>2. LOCATION</b> .....	<b>1</b>
<b>3. BASIC DESCRIPTION OF THE FACILITIES</b> .....	<b>2</b>
<b>4. WATER NEEDS AND CONSUMPTIONS</b> .....	<b>2</b>
4.1. INTRODUCTION .....	2
4.2. CONSTRUCTION PHASE .....	2
4.2.1. SANITATION WATER REQUIREMENTS .....	2
4.2.2. CONSTRUCTION PROCESS WATER REQUIREMENTS .....	3
4.3. OPERATIONAL PHASE .....	3
4.3.1. SANITATION WATER REQUIREMENTS .....	3
4.3.2. PLANT MAINTENANCE WATER REQUIREMENTS .....	3
4.4. WATER STORAGE REQUIREMENTS .....	4
4.5. SUMMARY OF WATER CONSUMPTIONS .....	4
<b>5. GROUNDWATER AND RAINWATER</b> .....	<b>4</b>
5.1. INTRODUCTION .....	4
5.2. GROUNDWATER .....	4
5.3. RAINWATER .....	6
5.4. FLOW ESTIMATE .....	7
<b>6. LIST OF REFERENCES</b> .....	<b>8</b>

## LIST OF ACRONYMS

---

AC	Alternating Current
DC	Direct Current
kV	Kilovolt
MW	Megawatt
MWp	Megawatt Peak
PV	Photovoltaic
SEF	Solar Energy Facility
SWSA	Strategic Water Source Areas
UN	United Nations
Wp	Watt Peak
WUL	Water Use License

## 1. PURPOSE AND SCOPE

This document defines the scope of the study for the definition of water needs and consumption during the **Construction Phase** and in the **Operation Phase** for the AEP Kathu Solar Project in the Northern Cape Province, South Africa.

## 2. LOCATION

The AEP Kathu Solar Project is proposed on the farm LEGOKO No 460 portion 0, located in the District of Kuruman Rd, Northern Cape Province, within the jurisdiction area of the Gamagara Local Municipality. The property is in extent 1370.8980 ha is extent and is located approximately 8 km South East of Kathu. The proposed development site is situated 5km south east of the ESKOM Ferrum Substation located on the Farm Sekgame No. 461. Access to the site is provided via roads on neighbouring farms that join up with the N14 National Road.

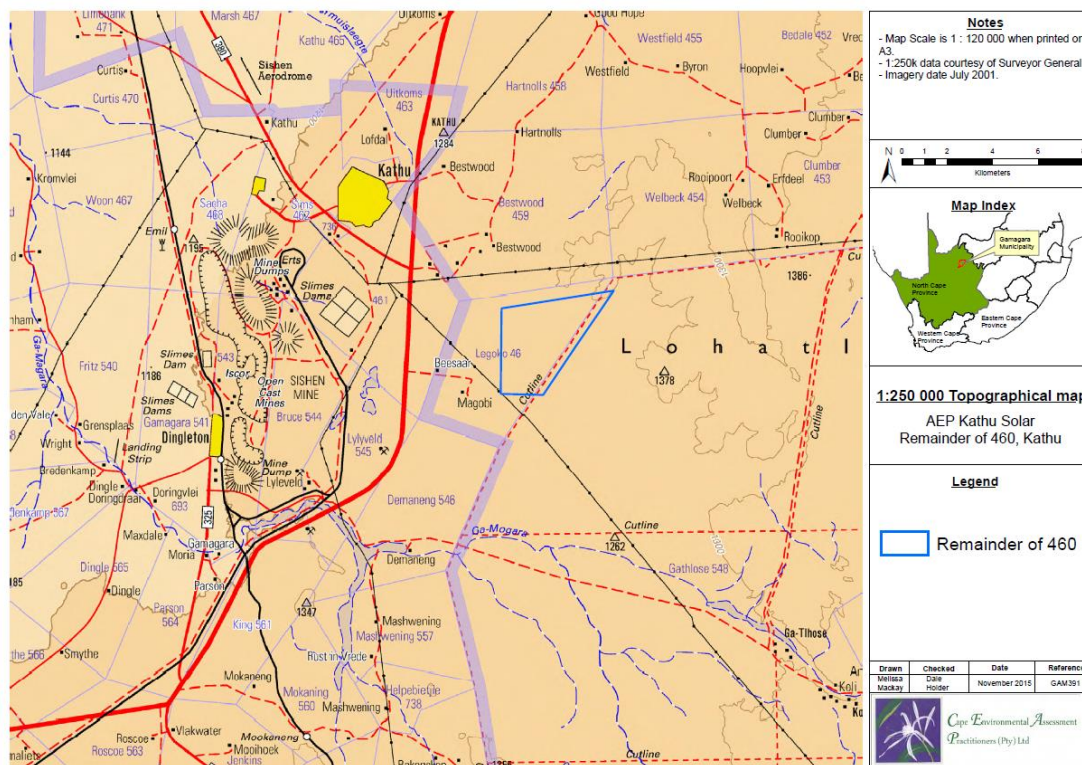


FIGURE 1: AEP KATHU SOLAR PROJECT

### 3. BASIC DESCRIPTION OF THE FACILITIES

---

The solar photovoltaic (PV) plant will have a maximum installed capacity of 86.25 Megawatt (MW), with a net AC electrical generating capacity of 75 MW.

The main elements of the AEP Kathu Solar Project will be as follows:

- Modules (solar panels),
- Inverters,
- Transformers,
- Medium-voltage grid,
- Transformer Substation, and
- Internal and external roadways.

### 4. WATER NEEDS AND CONSUMPTIONS

---

#### 4.1. INTRODUCTION

---

The estimates are based on two distinct phases, the first one being for the **construction** of the solar energy facility, and the second phase corresponding to the **operation & maintenance** of the installed energy-generating infrastructure.

#### 4.2. CONSTRUCTION PHASE

---

The **Construction Phase** of the AEP Kathu Solar Project is broken down into two categories of requirements, **Sanitation** (drinking, cooking and cleaning) and **Construction Processes**. The construction duration of the SEF is estimated to be 18 months.

##### 4.2.1. SANITATION WATER REQUIREMENTS

---

It is estimated that there will be approximately 500 workers on site at the peak of the construction period. The average number of construction workers on site per day is estimated to be approximately 250. The United Nations (UN) suggests that a person needs in the region of 20 - 50 Litres of water a day to ensure their basic needs for drinking, cooking and cleaning (UN-Water, n.d.). The following calculations assume 50 Litres/worker/day with the assumption that **portable chemical toilets** will be used at the construction site.

TABLE 1: CONSTRUCTION SANITATION WATER REQUIREMENTS

Consumption (Litres/worker/day)	Construction Duration	Workers on site	Total Consumption (Litres)	Total Consumption (m <sup>3</sup> )
50	540 days	250	6,750,000	<b>6,750</b>

#### 4.2.2. CONSTRUCTION PROCESS WATER REQUIREMENTS

---

Water consumption during the construction process is associated primarily with the compaction of roads to meet minimum quality requirements. The requirement is estimated to be 50 Litres/m<sup>3</sup>. A further 250 m<sup>3</sup> quantity has been allowed for other general uses such as concrete curing, road maintenance, terrain irrigation etc.

TABLE 2: CONSTRUCTION PROCESS WATER REQUIREMENTS

Construction Process	Consumption (Litres/m <sup>3</sup> )	Construction Quantities	Total Consumption (Litres)	Total Consumption (m <sup>3</sup> )
Compaction of roads	50 Litres/m <sup>3</sup>	35,000 m <sup>3</sup> of granular material	1,750,000	1,750
Others	-	-	-	250
<b>TOTAL</b>				<b>2,000</b>

**Note:** Recycled water as opposed to potable water may be used for the above construction processes.

#### 4.3. OPERATIONAL PHASE

---

The **Operational Phase** of the AEP Kathu Solar Project is broken down into two categories of requirements, **Sanitation** (drinking, cooking and cleaning) and **Plant Maintenance** (module cleaning and road maintenance & irrigation). The construction duration of the SEF is estimated to be 18 months.

##### 4.3.1. SANITATION WATER REQUIREMENTS

---

Employment numbers at a solar energy facility depends largely on the extent to which operational processes are automated. For the purpose of these calculations, it is assumed that the AEP Kathu Solar Project will employ a maximum of 60 workers at any given point in time during the 20-year operational lifespan of the Plant. The United Nations (UN) suggests that a person needs in the region of 20 - 50 Litres of water a day to ensure their basic needs for drinking, cooking and cleaning (UN-Water, n.d.). Assuming 50 Litres/worker/day, the total annual consumption during the operational phase of the facility is calculated to be **1,095 m<sup>3</sup>**.

##### 4.3.2. PLANT MAINTENANCE WATER REQUIREMENTS

---

###### Module cleaning

For this purpose it is assumed that the solar PV modules will be cleaned twice per annum. The maximum allowable DC/AC ratio is 1.15. Therefore a plant with a net generating capacity of 75 MW corresponds to a total peak installed capacity of 86.25 MWp. Assuming a module size of 300 Wp, the facility will see 287,500 units installed. The estimated water consumption is calculated in the following table.

TABLE 3: PLANT MAINTENANCE WATER REQUIREMENTS

Quantity (modules)	Area (m <sup>2</sup> per module)	Water Consumption (Litres/m <sup>2</sup> )	Consumption per Clean (Litres)	Cleans/year	Total Consumption (m <sup>3</sup> )
287,500	1.95	3	1,681,875	2	<b>3,364</b>

#### Road maintenance

It is assumed that 200 m<sup>3</sup>/year will be required for road maintenance and irrigation purposes.

#### 4.4. WATER STORAGE REQUIREMENTS

---

It is assumed that potable water will be stored in small water tanks on site. A typical example of such would be a standard JoJo 5,000 Litre water tank measuring 1,820 mm in diameter and 2,100 mm in height.

Grey water and sewerage will be discharged to an approved watertight septic tank system, for collection by authorized agents.

#### 4.5. SUMMARY OF WATER CONSUMPTIONS

---

The total water consumption estimated for the **Construction Phase** is **8,750 m<sup>3</sup>**, for the total **18-month construction period**.

The total water consumption estimated for the **Operational Phase** is **4,659 m<sup>3</sup> per annum**, for the **20-year operational lifespan** of the SEF.

## 5. GROUNDWATER AND RAINWATER

---

### 5.1. INTRODUCTION

---

In order to reduce the demand placed on the municipality, the Project will look to use both rainwater and groundwater during the construction and operational phases.

### 5.2. GROUNDWATER

---

The proposed AEP Kathu Solar Project will be located near Kathu in the Northern Cape Province. According to Figure 2 below, the area may have a groundwater occurrence of between 0.1 and 2 Litres/second.



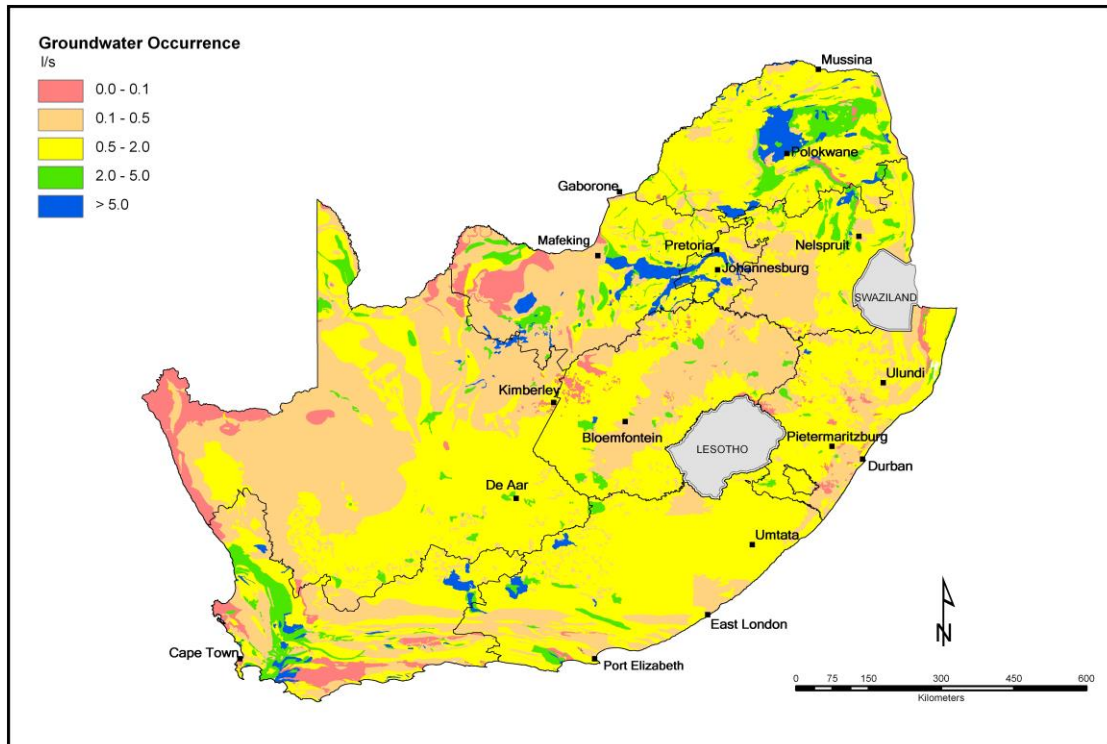


FIGURE 2: GROUNDWATER OCCURENCE IN SOUTH AFRICA (DEPARTMENT OF WATER AFFAIRS)

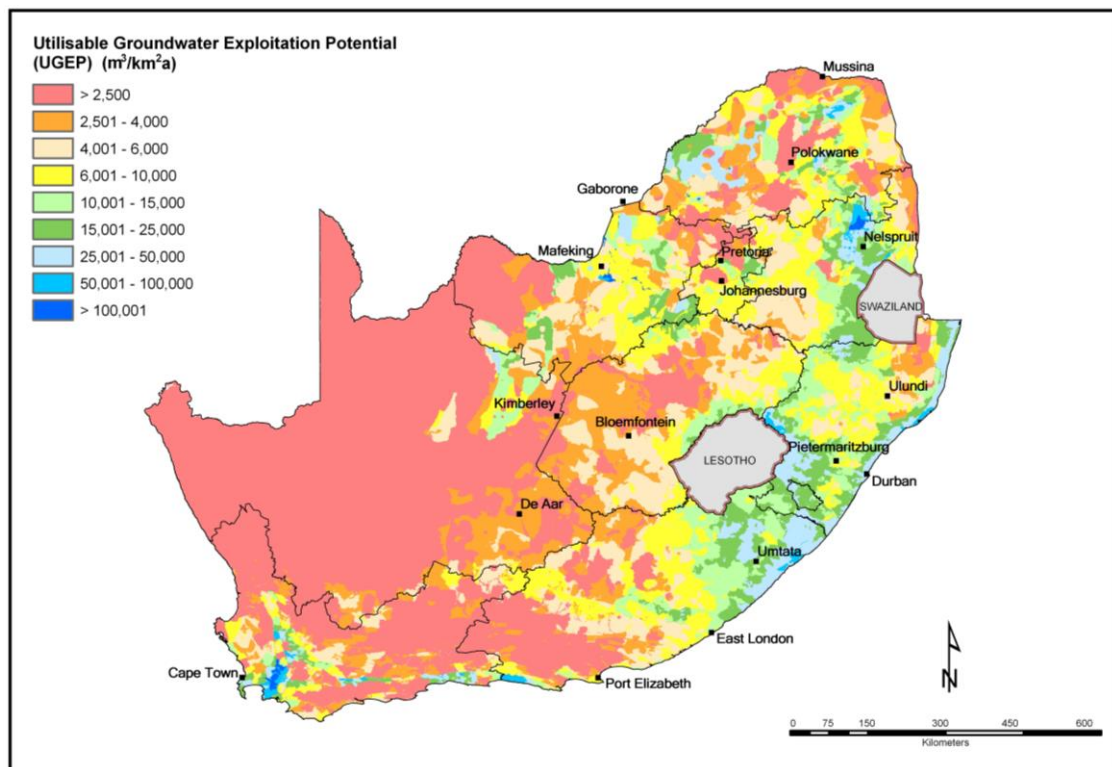


FIGURE 3: UTILISABLE GROUNDWATER EXPLOITATION POTENTIAL, SOUTH AFRICA (DEPARTMENT OF WATER AFFAIRS)

The Developer will solicit the services of a consultant to undertake an assessment of groundwater resources that will include hydrocensus and yield test studies. Should borehole extraction prove to be a feasible water supply option for the proposed AEP Kathu Solar

Project, then the formal processes will commence for registration of the necessary water use license (WUL) applications and the municipality notified accordingly.

### 5.3. RAINWATER

Figure 3 below (WORLD WEATHER ONLINE, 2000 - 2012) depicts the monthly climate average for Kathu. The average rainfall over a 12 month period is calculated to be 32.8 mm. Figure 4 below depicts a mean annual runoff map of South Africa (Biodiversity GIS, 2007) in which it is shown that Kathu may experience anywhere between 0 – 60 mm/year runoff.

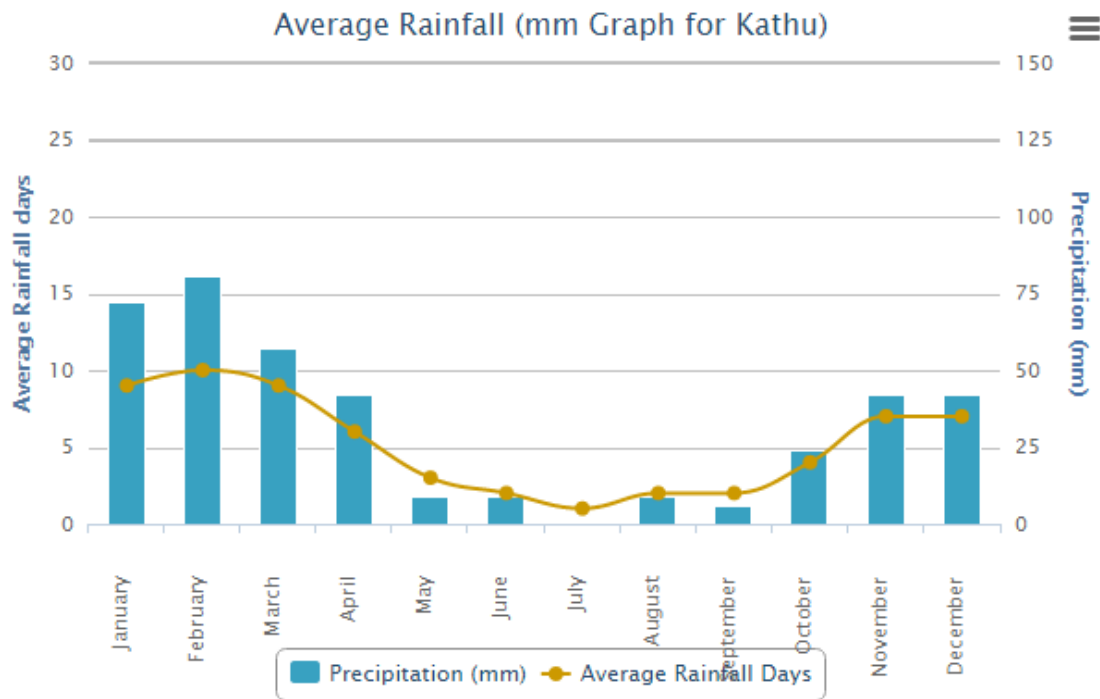


FIGURE 3: KATHU MONTHLY CLIMATE AVERAGE, SOUTH AFRICA (WORLD WEATHER ONLINE, 2000 - 2012)

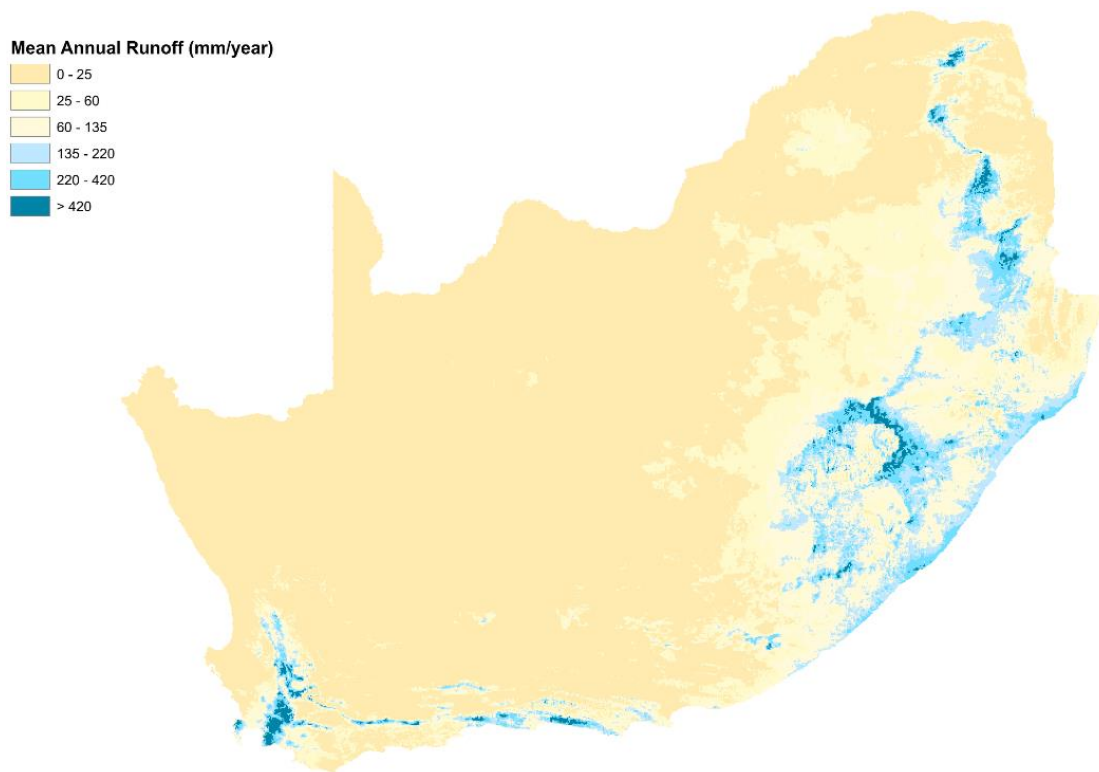


FIGURE 4: MEAN ANNUAL RUNOFF FOR SOUTH AFRICA (BIODIVERSITY GIS, 2007)

#### 5.4. FLOW ESTIMATE

---

As a minimum it is intended to catch and store rainfall that falls on the roof of the substation building. These calculations are indicative, and are based on the monthly average rainfall of 32.8 mm.

The Rational Method is used to calculate the rain flow:  $Q = C \times I \times A$

Where:

<b>Q</b>	is	<b>Flowrate</b>
<b>C</b>	is	the <b>Coefficient of Runoff</b>
<b>I</b>	is	the <b>Intensity of the storm</b> , and
<b>A</b>	is	the <b>Catchment Area</b>

For the roof, the coefficient of runoff, **C**, is equal to **1**.

The Intensity of the storm, **I**, is equal to **0.046 mm/hr**.

The dimension of the roof is:

- b = 33 m; 2a = 8.55 m; d = 0.6 m, with a total area of 282,15 m<sup>2</sup>.



FIGURE 5: WIND EFFECT FORMULA

Taking wind effect into consideration (see Figure 5), the rainfall catchment area, **A**, of the roof is reduced to **151 m<sup>2</sup>**.

The total flowrate, **Q**, is equal to **0,007 m<sup>3</sup>/hr**.

Therefore, for an average of 365 days it would be possible to accumulate 60.8 m<sup>3</sup> of rainfall, which meets only 5.6% of the annual sanitation water needs during operation of the solar energy facility, indicating that potable water will need to be trucked in to the facility.

## 6. LIST OF REFERENCES

---

Biodiversity GIS. (2007). *Strategic Water Source Areas (SWSA)*. Retrieved January 20, 2014, from Biodiversity GIS: <http://bgis.sanbi.org/NFEPA/SWSAmap.asp>

Department of Water Affairs. (n.d.). *Groundwater Occurrence*. Eastern Cape Office.

UN-Water. (n.d.). *Statistics: Graphs and Maps*. Retrieved January 17, 2014, from UN-Water: [http://www.unwater.org/statistics\\_san.html](http://www.unwater.org/statistics_san.html)

WORLD WEATHER ONLINE. (n.d.). *Kathu Monthly Climate Average, South Africa*. Retrieved January 20, 2014, from WORLD WEATHER ONLINE: <http://www.worldweatheronline.com/Kathu-weather-averages/Northern-Cape/ZA.aspx>