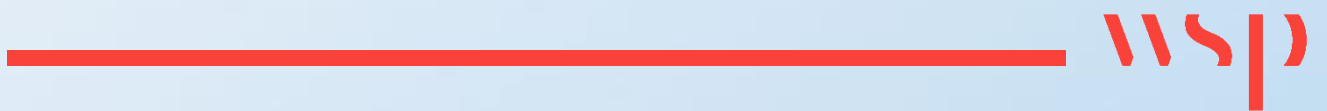


Appendix E



MAPS



Proposed Chemical Warehouse

Project Site Coordinates

Legend

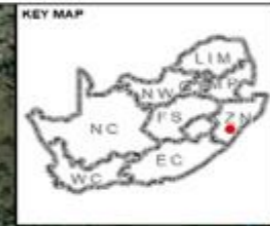
-  Coordinate Placemarkers
-  Site Boundary



Google Earth

Image © 2022 Maxar Technologies

100 m



- LEGEND**
- Richbay Bay Warehouse
 - Railway
 - National road
 - Main road
 - Access road
 - Rivers - Perennial
 - Rivers - Non perennial



NOTE(S)
 1. LINE NOTES
 2. LINE NOTES
 3. LINE NOTES

REFERENCE(S)
 1. COORDINATE SYSTEM: GCS WGS 1984
 2. SERVICE LAYER CREDITS: SOURCE: ESRI, MAXAR, EARTHSTAR GEOGRAPHICS, AND THE GIS USER COMMUNITY

CLIENT
 RICHBAY PROPERTIES

PROJECT
 RICHBAY BAY WAREHOUSE PMB DRAFT EIA

TITLE
 LOCALITY MAP

CONSULTANT		YYYY-MM-DD	2023/06/30
		DESIGNED	JM
		PREPARED	JM
		REVIEWED	PN
		APPROVED	PN

PROJECT NO.	CONTROL	REV.	FIGURE
41103633			


Map 1: 1:13 000 (Scale) 2023/06/30

Project No. 41103633 - RICHBAY BAY WAREHOUSE PMB DRAFT EIA LOCALITY MAP

R-Bay Properties

Proposed Location

Legend

 R-Bay Properties Warehouses



Google Earth

Image © 2022 Maxar Technologies
© 2022 Google

P. Trimbora Agency Cc

CLELAND

Planet X Bowl

R103

R103

R103

29°39'39.85"S and 30°24'51.85"E

Action Sports KZN Midland

Trudair Foods



1 km



R-BAY PROPERTIES
LAYOUT MAP

Legend

-  Chemical Warehouse
-  Administration Building and Staff Rooms
-  Entrance / Exit
-  Parking Bays (Cars and Trucks)
-  Facility Boundary



DATA SOURCE:
ARC GIS 10.2

PROJECTION: UTM Zone 25S (WGS1984)

PROJECT TITLE: R-Bay Properties (Chemical Warehouse)

PROJECT NO: 41133023

SCALE: 1:800 AT A4 DATE: 2022/06/28

DRAWN BY: JARED PADJUNTAN

REVIEWED BY: ANDR SCHIEPERS

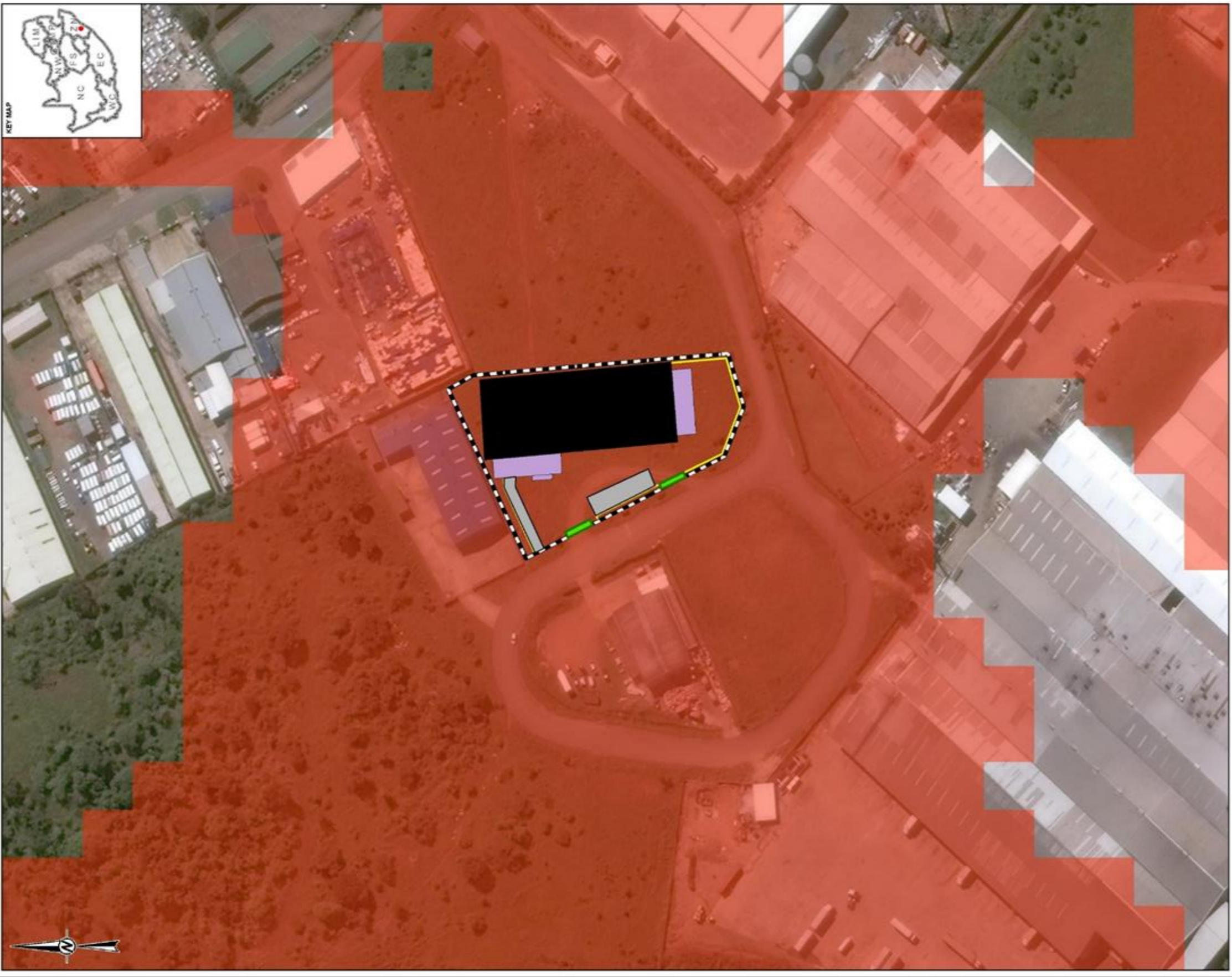


WWW.WSP.COM

DISCLAIMER
The information on this figure was derived from various digital databases available to WSP Environmental Pty Ltd. All information is provided "as is" and it must be acknowledged that data information and maps are dynamic and to a constant state of maintenance, correction and update. WSP Environmental Pty Ltd cannot accept any responsibility for errors, omissions, or positional accuracy where it has not been already ascertained or implied as to the use of this information, including the warranty of non-negligence or fitness for a particular purpose. Publication of any errors will be appreciated.

ESRI, HERE, Garmin, (c) OpenStreetMap contributors, and the GIS user community, Source: Esri, DeLorme, Earthstar Geographics, and the GIS User Community

FILE: S:\41103633\Richbay Warehouse\41103633_Richbay Warehouse_PMB Draft EIA_20230630.mxd, 2023/06/30 11:02:22 pm



LEGEND

- Path
- Fence
- Warehouse
- Buildings
- Entry Points
- Parking

KZN Biodiversity Sector Plan (2016)

CBA: Irreplaceable



NOTES:
1. LINE NOTES
2. LINE NOTES
3. LINE NOTES

REFERENCE(S):
1. COORDINATE SYSTEM: GCS WGS 1984
2. SERVICE LAYER CREDITS: SOURCE: ESRI, MAXAR, EARTHSTAR GEOGRAPHICS, AND THE GIS USER COMMUNITY

CLIENT
RICHBAY PROPERTIES

PROJECT
RICHBAY BAY WAREHOUSE PMB DRAFT EIA

TITLE
SENSITIVITY MAP

CONSULTANT
YYYY-MM-DD 2023/06/30
DESIGNED JM
PREPARED JM
REVIEWED PN
APPROVED PN



PROJECT NO 41103633
CONTROL
REV



- LEGEND**
- Richbay Warehouse
 - Vegetation Type (SANBI, 2018)**
 - SVs 3 KwaZulu-Natal Hinterland Thornveld
 - SVs 6 Eastern Valley Bushveld



NOTE(S)

REFERENCE(S)
 1. COORDINATE SYSTEM: HARTEBEESTHOEK94 L031
 2. SERVICE LAYER CREDITS: SOURCE: ESRI, MAXAR, EARTHSTAR GEOGRAPHICS, AND THE GIS USER COMMUNITY

CLIENT
RICHBAY PROPERTIES

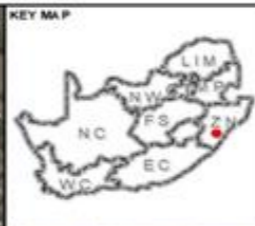
PROJECT
RICHBAY WAREHOUSE PMB DRAFT EIA

TITLE
VEGETATION TYPES

CONSULTANT	YYYY-MM-DD	2023/06/05
	DESIGNED	
	PREPARED	TS
	REVIEWED	AD
	APPROVED	AD

PROJECT NO.	CONTROL	REV.	FIGURE
41103633			

Path: G:\GIS\WSP\Projects\41103633 - Richbay Warehouse\Map_Series\Map_Series_Template.aprx
 Project: 41103633 - Richbay Warehouse\Map_Series\Map_Series_Template.aprx
 Date: 2023/06/05 11:27:19 AM



LEGEND
 Richbay Warehouse
 Red List of Ecosystems, remaining extent (SANBI, 2021)
 Least Concern



NOTE(S)

REFERENCE(S)
 1 COORDINATE SYSTEM: HARTENBEESTHOEKH LO31
 2 SERVICE LAYER CREDITS: SOURCE: ESRI, MAXAR, EARTHSTAR GEOGRAPHICS, AND THE GIS USER COMMUNITY

CLIENT
 RICHBAY PROPERTIES

PROJECT
 RICHBAY WAREHOUSE PMB DRAFT EIA

TITLE
 RED LIST OF ECOSYSTEMS

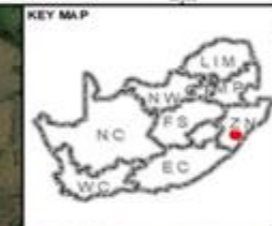
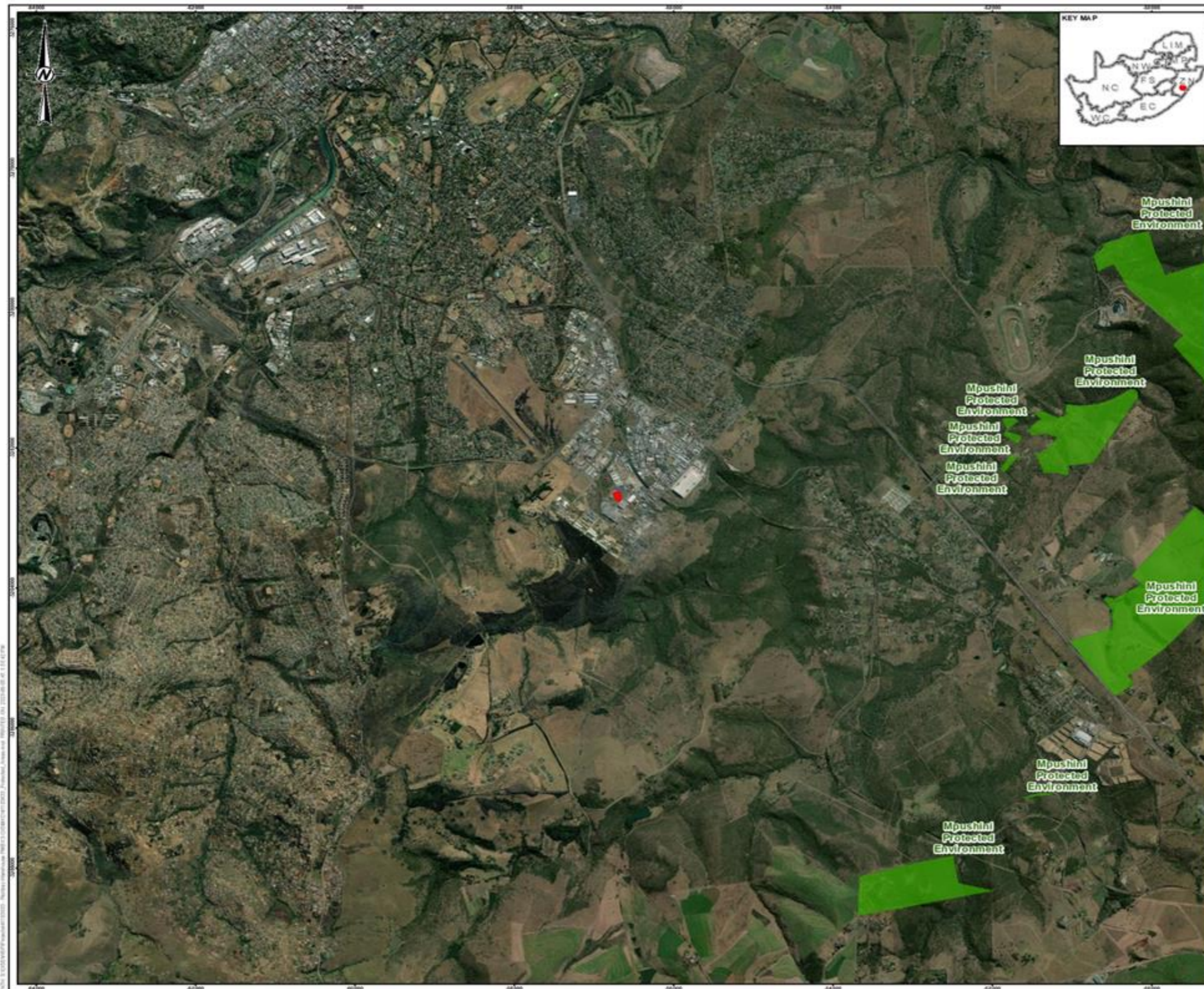


CONSULTANT	YYYY-MM-DD	2023-06-05
DESIGNED		
PREPARED	TS	
REVIEWED	AD	
APPROVED	AD	

PROJECT NO.	CONTROL	REV	FIGURE
41103633			

Richbay Warehouse PMB Draft EIA - Red List of Ecosystems (SANBI, 2021) - Figure 1: Red List of Ecosystems, remaining extent (SANBI, 2021)

WSP CONSULTANT (Pty) Ltd. All rights reserved. No part of this document may be reproduced without the prior written consent of WSP CONSULTANT (Pty) Ltd.



- LEGEND**
- Richbay Warehouse
 - Protected Areas (SAPAD, 2022 Q3)



NOTE(S)

- REFERENCE(S)**
1. COORDINATE SYSTEM: HARTEBEESTHOEK94 LQ31
 2. SERVICE LAYER CREDITS: SOURCE: ESR, MAXAR, EARTHSTAR GEOGRAPHICS, AND THE GIS USER COMMUNITY

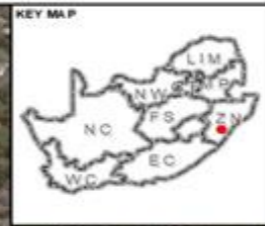
CLIENT
RICHBAY PROPERTIES

PROJECT
RICHBAY WAREHOUSE PMB DRAFT EIA

TITLE
PROTECTED AREAS

CONSULTANT	WSP	YYYY.MM.DD	2023/06/06
DESIGNED			
PREPARED		TS	
REVIEWED		AD	
APPROVED		AD	

PROJECT NO. **41103633** CONTROL REV FIGURE



LEGEND

- Richbay Warehouse
- NPAES Negotiated Focus Areas (DFFE, 2018)
- Priority Focus Areas



NOTE(S)

REFERENCE(S)

1. COORDINATE SYSTEM: HARTEBEESTHOEK94 L031
2. SERVICE LAYER CREDITS: SOURCE: ESR, MAXAR, EARTHSTAR GEOGRAPHICS, AND THE GIS USER COMMUNITY

CLIENT
RICHBAY PROPERTIES

PROJECT
RICHBAY WAREHOUSE PMB DRAFT EIA

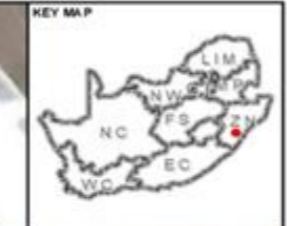
TITLE
PRIORITY AREAS FOR PROTECTED AREA EXPANSION

CONSULTANT		YYYY-MM-DD	2023-06-05
		DESIGNED	
		PREPARED	TS
		REVIEWED	AD
		APPROVED	AD

PROJECT NO: **41103633** CONTROL REV FIGURE

DATA SOURCES: ESRI, MAXAR, EARTHSTAR GEOGRAPHICS, AND THE GIS USER COMMUNITY. PRINTED ON 2023-06-05 AT 1:52:34 PM.

IF THIS DOCUMENT IS USED FOR ANY OTHER PURPOSE, THE USER SHALL BE RESPONSIBLE FOR THE ACCURACY OF THE INFORMATION.



LEGEND

- Disturbed Grassland
- Richbay Warehouse



NOTE(S)

REFERENCE(S)

- 1. COORDINATE SYSTEM: HARTBEESTHOEKH LO31
- 2. SERVICE LAYER CREDITS: SOURCE: ESRI, MAXAR, EARTHSTAR GEOGRAPHICS, AND THE GIS USER COMMUNITY

CLIENT

RICHBAY PROPERTIES

PROJECT

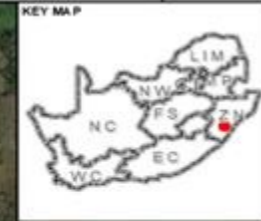
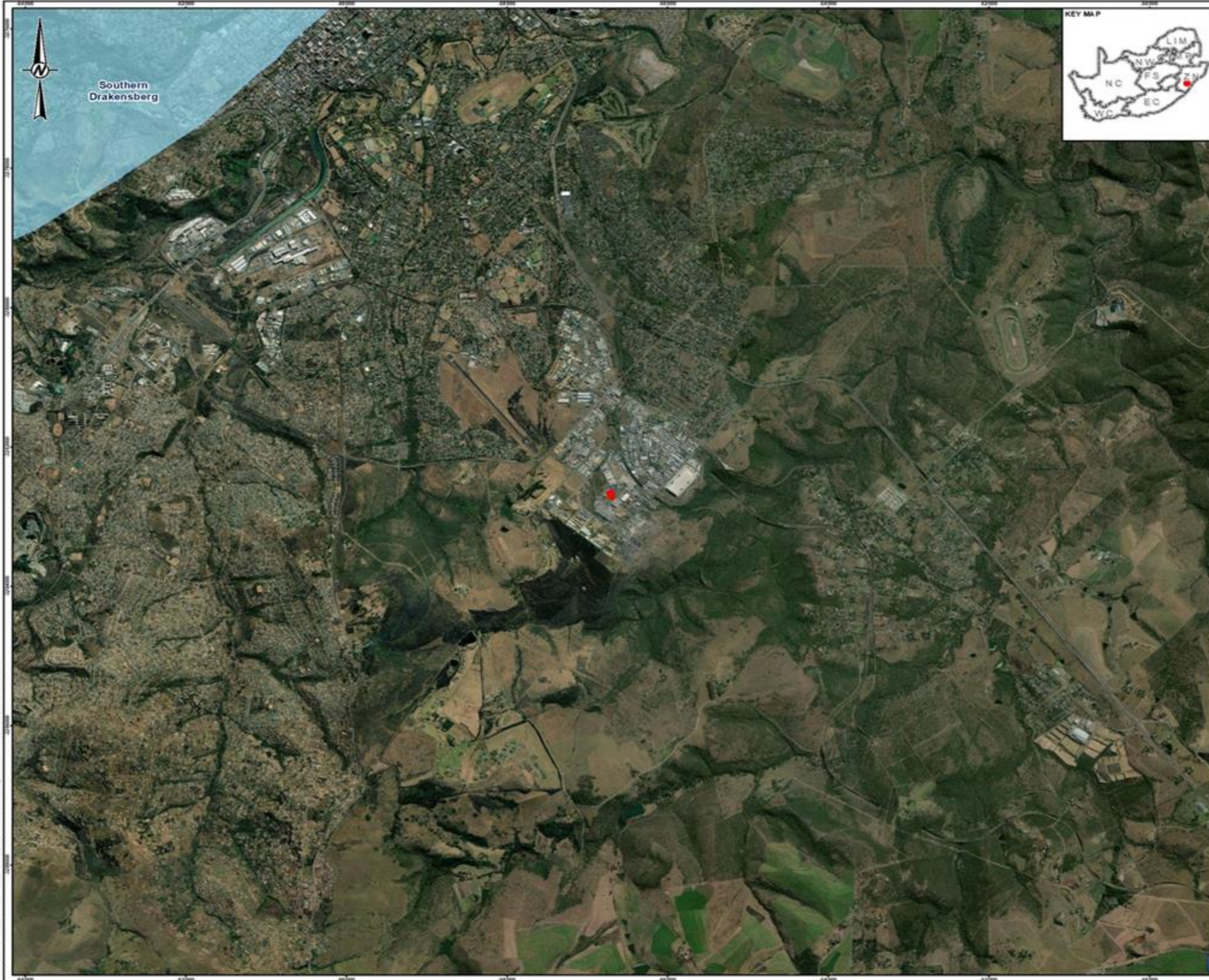
RICHBAY WAREHOUSE PMB DRAFT EIA

TITLE

VEGETATION COMMUNITIES

CONSULTANT		YYYY-MM-DD	2023-06-06
DESIGNED			
PREPARED			TS
REVIEWED			AD
APPROVED			AD

PROJECT NO: **41103633** CONTROL REV. FIGURE



- LEGEND**
- Richbay Warehouse
 - SWSA (2017)



NOTE(S)

- REFERENCE(S)**
1. COORDINATE SYSTEM: HARTEBEESTHOEK94 LQ31
 2. SERVICE LAYER CREDITS: SOURCE: ESRI, MAXAR, EARTHSTAR GEOGRAPHICS, AND THE GIS USER COMMUNITY

CLIENT
 RICHBAY PROPERTIES

PROJECT
 RICHBAY WAREHOUSE PMB DRAFT EIA

TITLE
 STRATEGIC WATER SOURCE AREAS

CONSULTANT		YYYYMM-DD	2023/06/05
		DESIGNED	
		PREPARED	TS
		REVIEWED	AD
		APPROVED	AD

PROJECT NO 41103633 **CONTROL** **REV** **FIGURE**



- LEGEND**
- Richbay Warehouse
 - National Wetland Map 5 (SANBI, 2018)
 - Estuarine functional zone
 - Estuarine microsystems
 - Channelled valley-bottom wetland
 - Depression wetland
 - Floodplain wetland
 - River
 - Seep wetland
 - Unchannelled valley-bottom wetland
 - Wetland flat



NOTE(S)
 1. LINE NOTES
 2. LINE NOTES
 3. LINE NOTES

REFERENCE(S)
 1. COORDINATE SYSTEM: HARTBEESTHOEK94 LO31
 2. SERVICE LAYER CREDITS: SOURCE: ESRI, MAXAR, EARTHSTAR GEOGRAPHICS, AND THE GIS USER COMMUNITY

CLIENT
 RICHBAY PROPERTIES

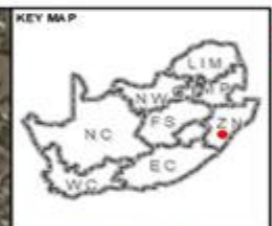
PROJECT
 RICHBAY WAREHOUSE PMB DRAFT EIA

TITLE
 NATIONAL WETLAND MAP 5

	YYYY-MM-DD	2023-06-05
	DESIGNED	
	PREPARED	TS
	REVIEWED	AD
	APPROVED	AD
PROJECT NO.	CONTROL	REV.
41103633		

DATE: 2023-06-05 10:00:00 AM; USERNAME: ADMIN; PROJECT: RICHBAY WAREHOUSE PMB DRAFT EIA; MAP: NATIONAL WETLAND MAP 5; SCALE: 1:10,000; STATUS: DRAFT

DATE: 2023-06-05 10:00:00 AM; USERNAME: ADMIN; PROJECT: RICHBAY WAREHOUSE PMB DRAFT EIA; MAP: NATIONAL WETLAND MAP 5; SCALE: 1:10,000; STATUS: DRAFT



LEGEND
 Richbay Warehouse
 Wetlands



NOTE(S)

REFERENCE(S)
 1. COORDINATE SYSTEM: HARTEBEESTHOEKM LO31
 2. SERVICE LAYER CREDITS: SOURCE: ESRI, MAXAR, EARTHSTAR GEOGRAPHICS, AND THE GIS USER COMMUNITY

CLIENT
RICHBAY PROPERTIES

PROJECT
RICHBAY WAREHOUSE PMB DRAFT EIA

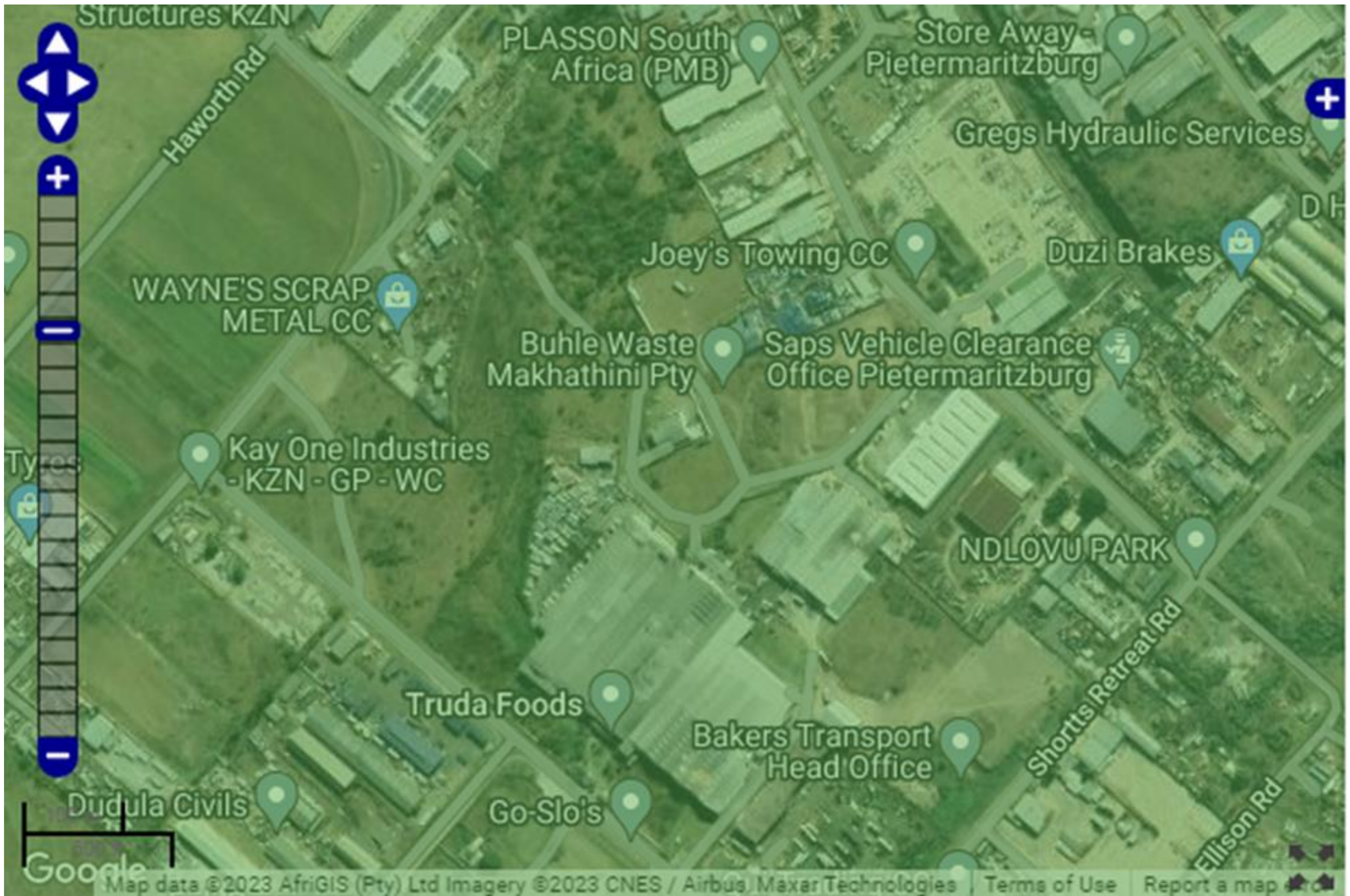
TITLE
WETLANDS

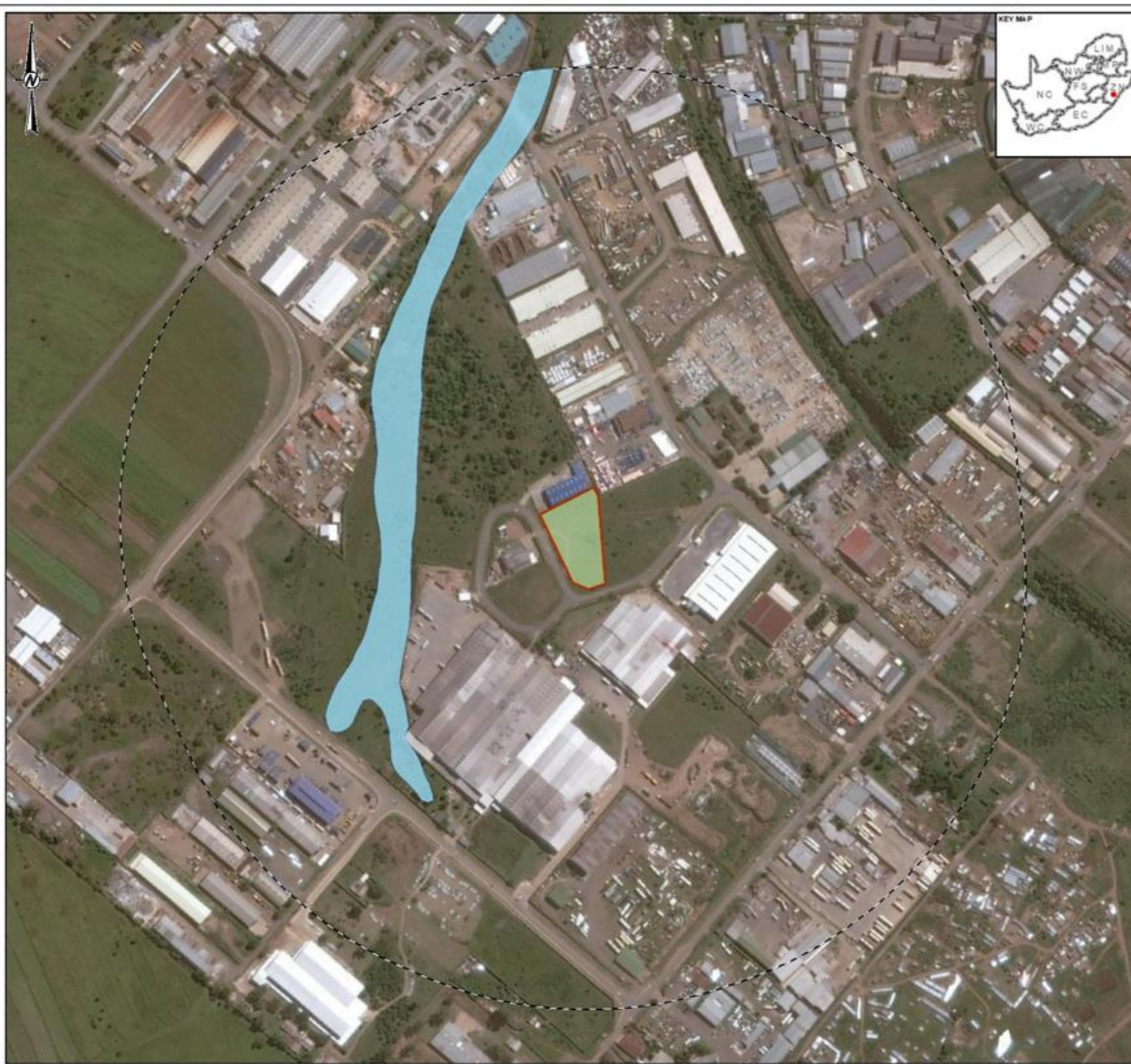
CONSULTANT	YYYY.MM.DD	2023/06/05
	DESIGNED	
	PREPARED	TS
	REVIEWED	AD
	APPROVED	AD

PROJECT NO. 41103633 CONTROL REV. FIGURE

1:10 000
 2023/06/05
 1:10 000
 2023/06/05

1:10 000
 2023/06/05
 1:10 000
 2023/06/05





- LEGEND**
- Richbay Warehouse
 - Wetlands
 - Disturbed Grassland



NOTE(S)

- REFERENCE(S)**
1. COORDINATE SYSTEM - HARTENBERGHOEKH LO01
 2. SERVICE LAYER CREDITS: SOURCE: ESRI, MAXAR, EARTHSTAR GEOGRAPHICS, AND THE GIS USER COMMUNITY.

CLIENT
 RICHBAY PROPERTIES

PROJECT
 RICHBAY WAREHOUSE PMB DRAFT EIA

TITLE
 SITE SENSITIVITIES

	CONSULTANT	YYYYMM-DD	2023/06/12
	DESIGNED		
	PREPARED	TS	
	REVIEWED	AD	
	APPROVED	AD	

PROJECT NO.	CONTROL	REV	FIGURE
41103633			

\P\4\41103633\41103633_001_Site Sensitivities Draft EIA\41103633_001_Site Sensitivities Draft EIA_01.mxd

\P\4\41103633\41103633_001_Site Sensitivities Draft EIA\41103633_001_Site Sensitivities Draft EIA_01.mxd