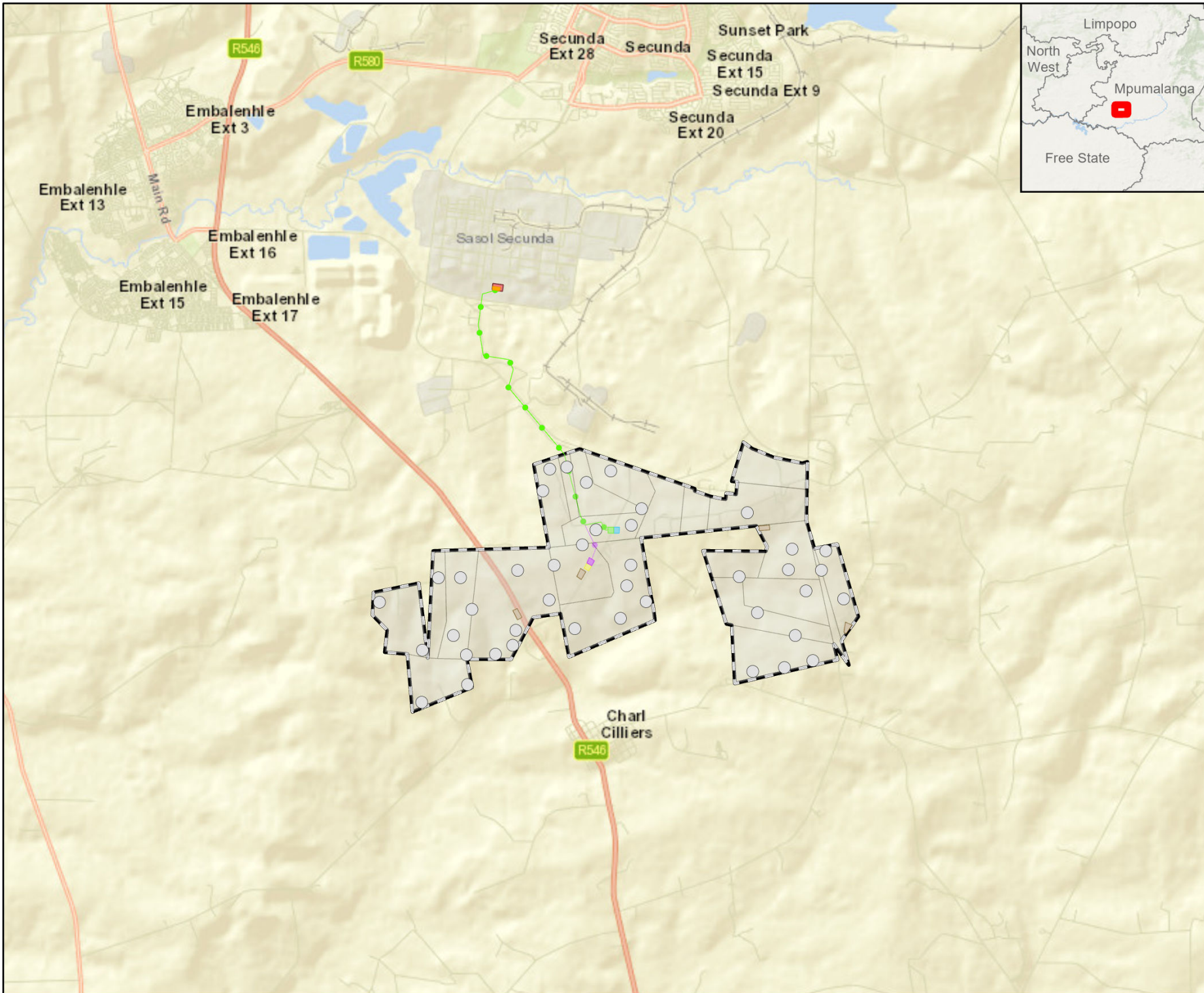


APPENDIX

E A3 MAPS

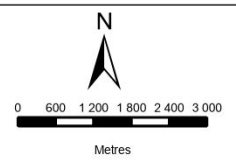




MUKONDELELI WEF

LOCALITY

- Legend**
- Turbine Locations
 - Option 1 (preferred)
 - Option 2
 - Expanded Area
 - Laydown Areas
 - Properties Signed
 - IPP Alt 1 (preferred)
 - IPP Alt 2
 - Offtaker Option 1 (preferred)
 - Offtaker Option 2
 - Proposed Substation
 - Location
 - WEF Extent



DISCLAIMER
 The information on this figure was derived from various digital databases available to WSP Environmental (Pty) Ltd. All information is provided "as is" and it must be acknowledged that data, information and maps are dynamic and in a constant state of maintenance, correction and update. WSP Environmental (Pty) Ltd cannot accept any responsibility for errors, omissions, or positional accuracy where it has not been directly responsible for the production of the data referenced. There are no warranties, expressed or implied, as to the use of this information, including the warranty of merchantability or fitness for a particular purpose. Notification of any errors will be appreciated.



WSP ENVIRONMENTAL (PTY) LTD
 BUILDING C, KINGSBURY DRIVE
 33 SLOANE STREET, BRYANSTON
 P O BOX 89887, SLOANE PARK 2152, RSA
 Tel +27 (0)11 851 1560, Fax +27 (0)11 361 1381, wsp@wspgroup.co.za

DATA SOURCE:
 Service Layer Credits: World Ocean Base, Esri, GEBCO, DeLorme, NaturalVue, World Street Map, Esri South Africa, Esri, HERE, Garmin, NGA,

COORDINATE SYSTEM: HARTEBEESTHOEK94 LO29

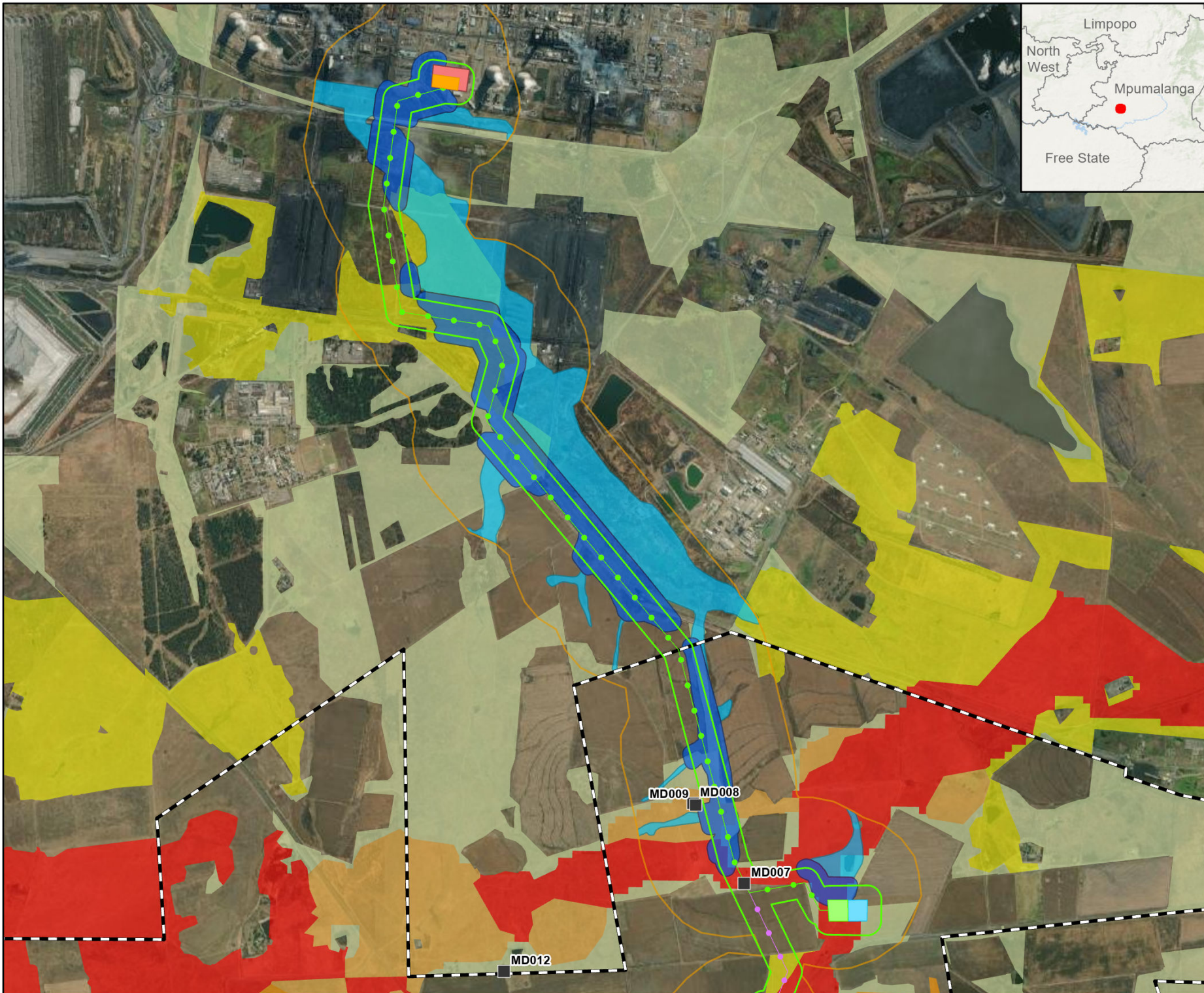
PROJECT TITLE:
 ENERTRAG SECUNDA WEF EIAS

SCALE: 1:120 000 **DRAWN BY:** TS

DATE: 2023/01/10 **REVIEWED BY:** AS

FIGURE NO: **PROJECT NO:** 41104073 **REV:**

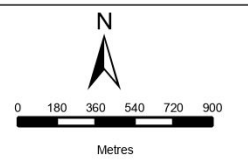
© COPYRIGHT RESERVED
 The content of this document is privileged and confidential and may not be disclosed or reproduced without the express authorisation of the author, being "WSP Environmental (Pty) Ltd"



MUKONDELELI WEF

GRID SENSITIVITY

- Legend**
- Heritage Sites
 - Expanded Area
 - WEF Extent
 - Assessment Corridor
 - 500m DWS Regulated Area
 - Wetlands within 500m
 - B42m Buffer
 - 61m Buffer
 - 79m Buffer
- Substations**
- JPP Alt 1 (preferred)
 - JPP Alt 2
 - Offtaker Option 1 (preferred)
 - Offtaker Option 2
 - Proposed Substation Location
- Powerline options (132kv)**
- Option 1 (preferred)
 - Option 2
- Mpumalanga Biodiversity Sector Plan (2013)**
- Protected Areas
 - CBA Irreplaceable
 - CBA Optimal
 - ESA Landscape corridor
 - ESA Local corridor
 - ESA Species Specific
 - Other Natural Areas
 - Modified - Old lands
 - Modified



DISCLAIMER

The information on this figure was derived from various digital databases available to WSP Environmental (Pty) Ltd. All information is provided "as is" and it must be acknowledged that data, information, and maps are dynamic and in a constant state of maintenance, correction and update. WSP Environmental (Pty) Ltd cannot accept any responsibility for errors, omissions, or positional accuracy where it has not been directly responsible for the production of the data referenced. There are no warranties, expressed or implied, as to the use of this information, including the warranty of merchantability or fitness for a particular purpose. Notification of any errors will be appreciated.



WSP ENVIRONMENTAL (PTY) LTD
 BUILDING C, WINDMILLS BRIDGE
 33 SLOANE STREET, BRYANSTON
 P O BOX 85887, SLOANE PARK 2152, RSA
 Tel +27 (0)11 251 1565, Fax +27 (0)11 251 1581, wsp@wspgroup.co.za

DATA SOURCE:
 Service Layer Credits: World Ocean Base; Esri, GEBCO, DeLorme, NaturalVue, World Imagery; Maxar

COORDINATE SYSTEM: HARTEBEESTHOEK94 LO29

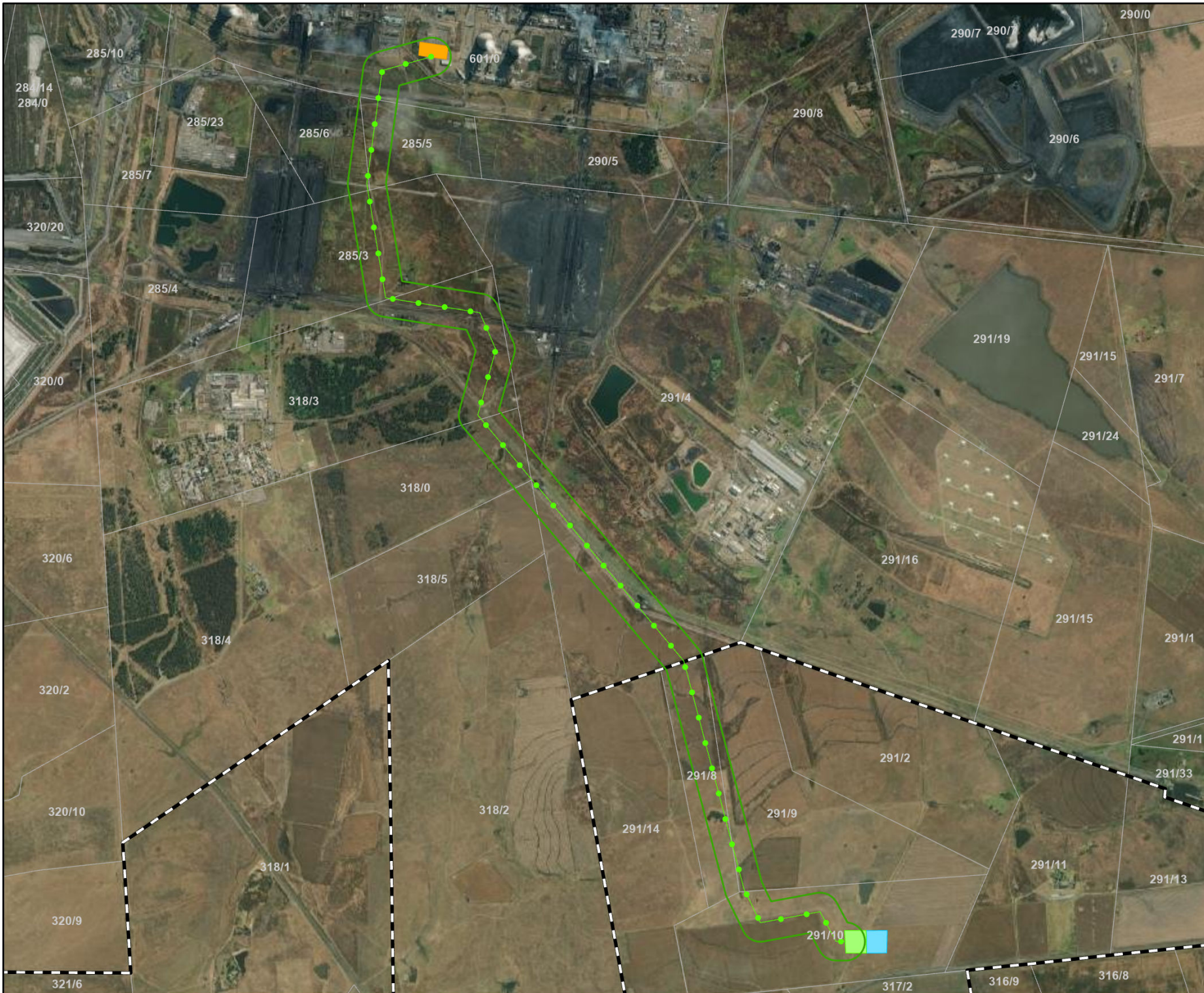
PROJECT TITLE:
 ENERTRAG SECUNDA WEF EIAS

SCALE: 1:35 000 **DRAWN BY:** TS

DATE: 2022/12/12 **REVIEWED BY:** AS

FIGURE NO: **PROJECT NO:** 41104073 **REV:**

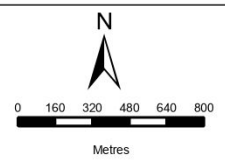
© COPYRIGHT RESERVED
 The content of this document is privileged and confidential and may not be disclosed or reproduced without the express authorisation of the author, being "WSP Environmental (Pty) Ltd"



MUKONDELELI WEF

Preferred route

- Legend**
- IPP Alt 1 (preferred)
 - Offtaker Option 1 (preferred)
 - Proposed Substation Location
 - WEF Extent
 - Farm Portions (CSG, 2021)
 - Powerline options (132kv)**
 - Option 1 (preferred)
 - Corridor (250m)



DISCLAIMER
 The information on this figure was derived from various digital databases available to WSP Environmental (Pty) Ltd. All information is provided "as is" and it must be acknowledged that data, information, and maps are dynamic and in a constant state of maintenance, correction and update. WSP Environmental (Pty) Ltd cannot accept any responsibility for errors, omissions, or positional accuracy where it has not been directly responsible for the production of the data referenced. There are no warranties, expressed or implied, as to the use of this information, including the warranty of merchantability or fitness for a particular purpose. Notification of any errors will be appreciated.



WSP ENVIRONMENTAL (PTY) LTD
 BUILDING C, KINWIGHTS DRIVE,
 33 SLOANE STREET, BRYANSTON
 P O BOX 88887, SLOANE PARK 2152, RSA
 Tel +27 (0)11 851 1560, Fax +27 (0)11 581 1381, wsp@wspgroup.co.za

DATA SOURCE:
 Service Layer Credits: World Ocean Base: Esri, GEBCO, DeLorme, NaturalVue, World Imagery: Maxar

COORDINATE SYSTEM: HARTEBEESTHOEK94 LO29

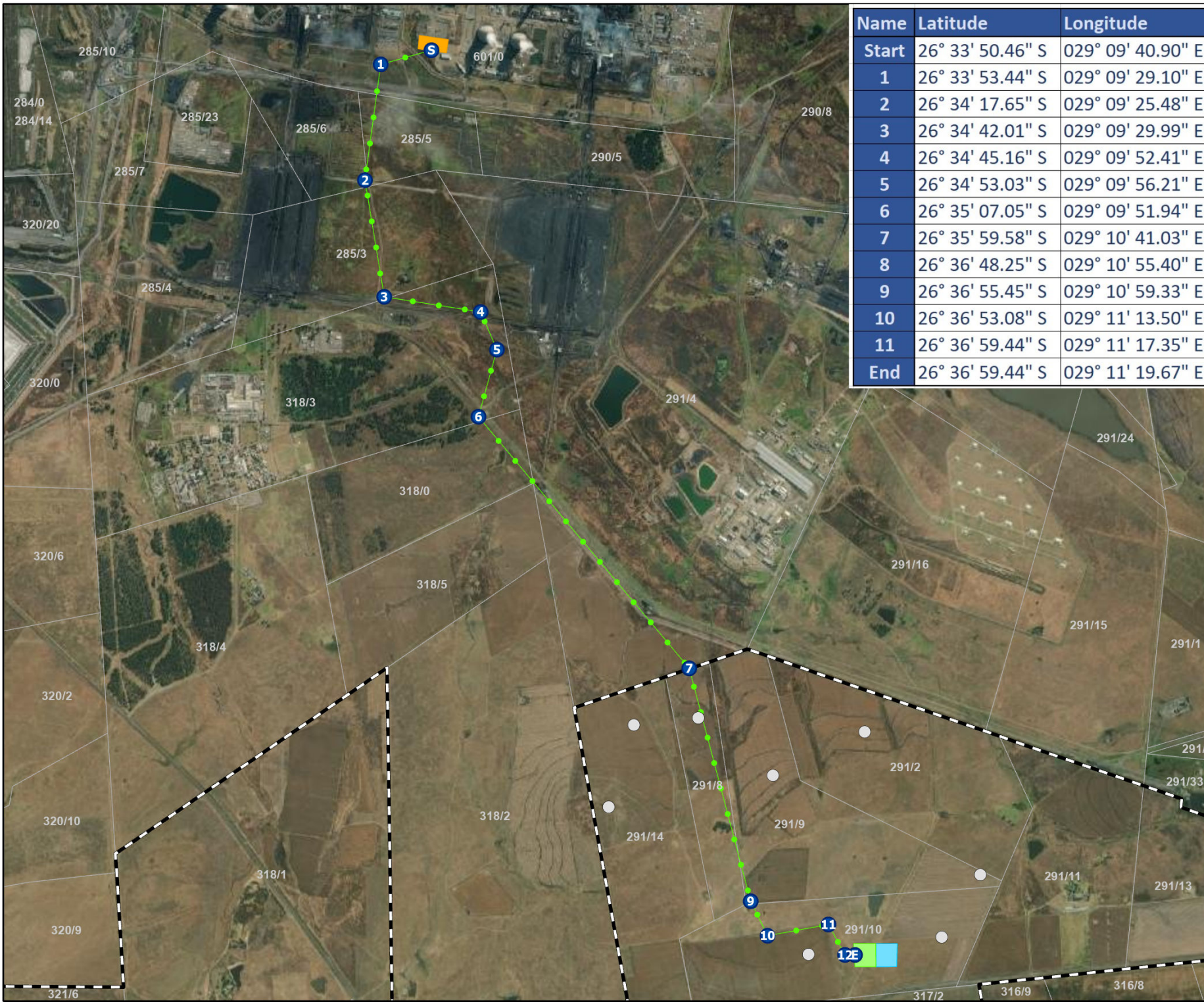
PROJECT TITLE:
 ENERTRAG SECUNDA WEF EIAS

SCALE: 1:32 532 **DRAWN BY:** TS

DATE: 2022/12/09 **REVIEWED BY:** AS

FIGURE NO: **PROJECT NO:** 41104073 **REV:**

© COPYRIGHT RESERVED
 The content of this document is privileged and confidential and may not be disclosed or reproduced without the express authorisation of the author, being "WSP Environmental (Pty) Ltd"

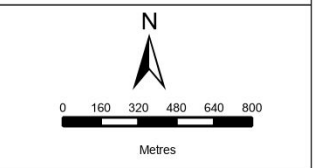


| Name | Latitude | Longitude |
|-------|------------------|-------------------|
| Start | 26° 33' 50.46" S | 029° 09' 40.90" E |
| 1 | 26° 33' 53.44" S | 029° 09' 29.10" E |
| 2 | 26° 34' 17.65" S | 029° 09' 25.48" E |
| 3 | 26° 34' 42.01" S | 029° 09' 29.99" E |
| 4 | 26° 34' 45.16" S | 029° 09' 52.41" E |
| 5 | 26° 34' 53.03" S | 029° 09' 56.21" E |
| 6 | 26° 35' 07.05" S | 029° 09' 51.94" E |
| 7 | 26° 35' 59.58" S | 029° 10' 41.03" E |
| 8 | 26° 36' 48.25" S | 029° 10' 55.40" E |
| 9 | 26° 36' 55.45" S | 029° 10' 59.33" E |
| 10 | 26° 36' 53.08" S | 029° 11' 13.50" E |
| 11 | 26° 36' 59.44" S | 029° 11' 17.35" E |
| End | 26° 36' 59.44" S | 029° 11' 19.67" E |

MUKONDELELI WEF

Powerline route and bend points

- Legend**
- Turbine Locations
 - Bend Points
 - IPP Alt 1 (preferred)
 - Offtaker Option 1 (preferred)
 - Proposed Substation Location
 - WEF Extent
 - Farm Portions (CSG, 2021)
 - Powerline options (132kv)
 - Option 1 (preferred)



DISCLAIMER
 The information on this figure was derived from various digital databases available to WSP Environmental (Pty) Ltd. All information is provided "as is" and it must be acknowledged that data, information and maps are dynamic and in a constant state of maintenance, correction and update. WSP Environmental (Pty) Ltd cannot accept any responsibility for errors, omissions, or positional accuracy where it has not been directly responsible for the production of the data referenced. There are no warranties, expressed or implied, as to the use of this information, including the warranty of merchantability or fitness for a particular purpose. Notification of any errors will be appreciated.

WSP ENVIRONMENTAL (PTY) LTD
 BUILDING C, KNIGHTSBRIDGE
 33 SLOANE STREET, BRYANSTON
 P O BOX 8887, SLOANE PARK 2152, RSA
 Tel +27 (0)11 851 1586, Fax +27 (0)11 381 1381, wsp@wspgroup.co.za

DATA SOURCE:
 Service Layer Credits: World Ocean Base: Esri, GEBCO, DeLorme, NaturalVue, World Imagery: Maxar

COORDINATE SYSTEM: HARTEBEESTHOEK94 LO29

PROJECT TITLE:
 ENERTRAG SECUNDA WEF EIAS

SCALE: 1:32 000 **DRAWN BY:** TS

DATE: 2022/12/09 **REVIEWED BY:** AS

FIGURE NO: **PROJECT NO:** 41104073 **REV:**

© COPYRIGHT RESERVED
 The content of this document is privileged and confidential and may not be disclosed or reproduced without the express authorisation of the author, being "WSP Environmental (Pty) Ltd"