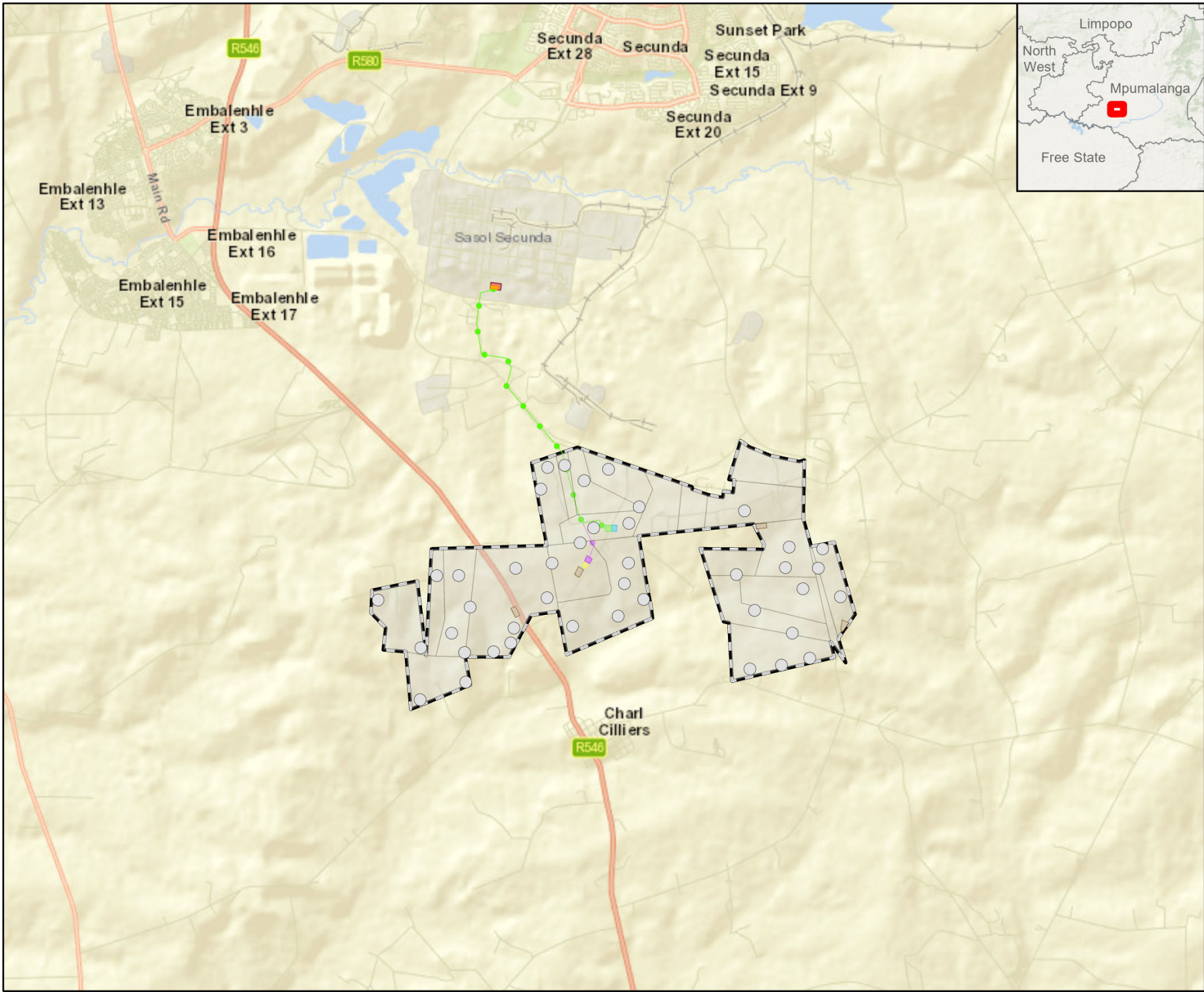


APPENDIX

E MAPS





MUKONDELELI WEF

LOCALITY

Legend


- Turbine Locations
- Option 1 (preferred)
- Option 2
- Expanded Area
- Laydown Areas
- Properties Signed
- IPP Alt 1 (preferred)
- IPP Alt 2
- Offtaker Option 1 (preferred)
- Offtaker Option 2
- Proposed Substation
- Location
- WEF Extent

0 600 1 200 1 800 2 400 3 000

Metres

DISCLAIMER

The information on this figure was derived from various digital databases available to WSP Environmental (Pty) Ltd. All information is provided "as is" and it must be acknowledged that data, information, and maps are dynamic and in a constant state of maintenance, correction and update. WSP Environmental (Pty) Ltd cannot accept any responsibility for errors, omissions, or positional accuracy where it has not been directly responsible for the production of the data referenced. There are no warranties, expressed or implied, as to the use of this information, including the warranty of merchantability or fitness for a particular purpose. Notification of any errors will be appreciated.



WSP ENVIRONMENTAL (PTY) LTD
BUILDING C, KINGSBURY
33 SLOANE STREET, BRYANSTON
P O BOX 89887, SLOANE PARK 2152, RSA
Tel +27 (0)11 251 1360, Fax +27 (0)11 251 1381, wsp@wspgroup.co.za

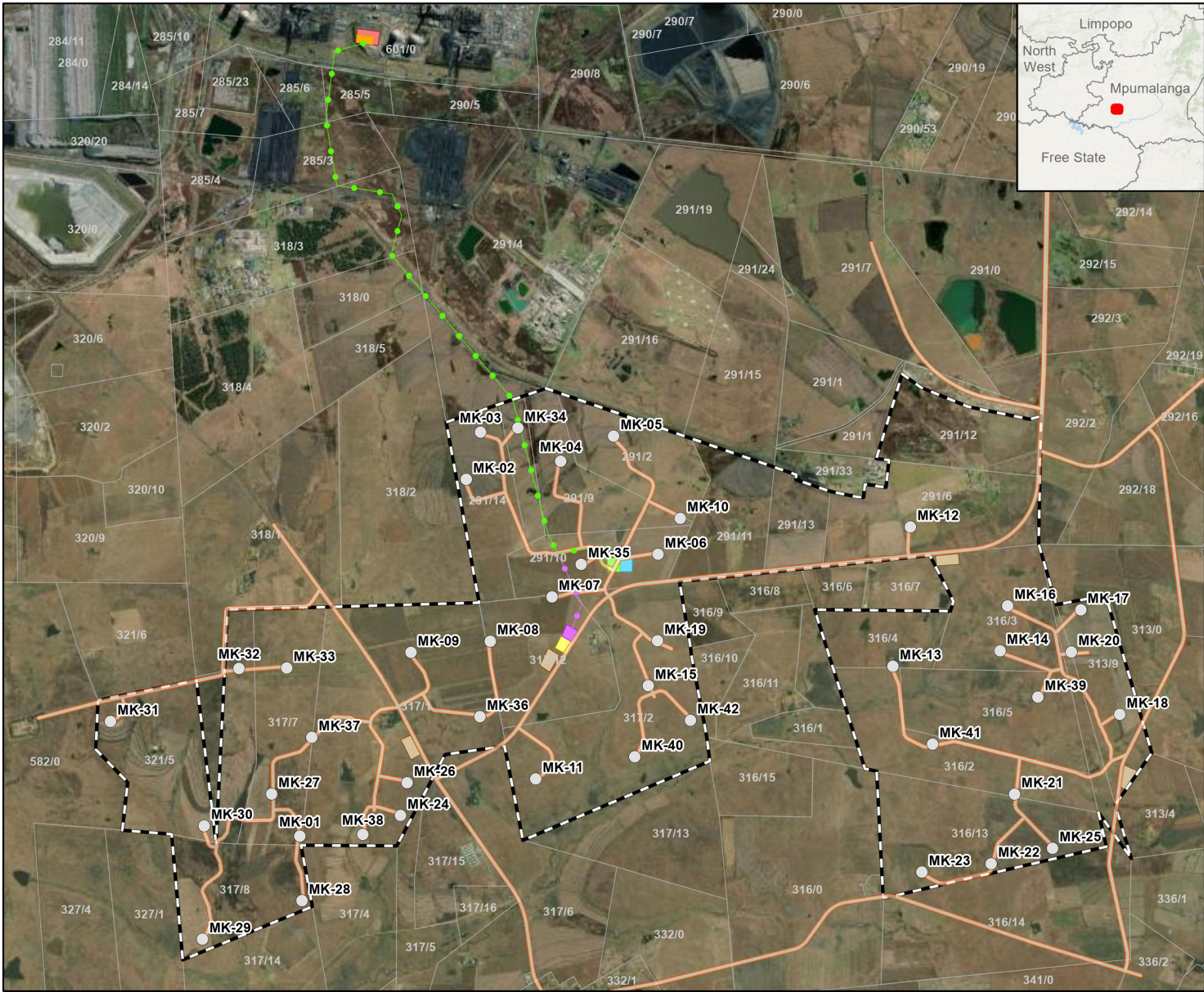
DATA SOURCE:
Service Layer Credits: World Ocean Base, Esri, GEBCO, DeLorme, NaturalVue, World Street Map, Esri South Africa, Esri, HERE, Garmin, NGA,

COORDINATE SYSTEM: HARTEBEESTHOEK94 LO29

PROJECT TITLE:
ENERTRAG SECUNDA WEF EIAS

SCALE: 1:120 000	DRAWN BY: TS	
DATE: 2023/01/10	REVIEWED BY: AS	
FIGURE NO:	PROJECT NO: 41104073	REV:

© COPYRIGHT RESERVED
The content of this document is privileged and confidential and may not be disclosed or reproduced without the express authorisation of the author, being "WSP Environmental (Pty) Ltd"



MUKONDELELI WEF

LAYOUT

- Legend**
- Turbine Locations
 - Roads
 - Laydown Areas
 - IPP Alt 1 (preferred)
 - IPP Alt 2
 - Offtaker Option 1 (preferred)
 - Offtaker Option 2
 - Proposed Substation Location
 - Expanded Area
 - WEF Extent
 - Farm Portions (CSG, 2021)
 - Powerline options (132kv)**
 - Option 1 (preferred)
 - Option 2

DISCLAIMER

The information on this figure was derived from various digital databases available to WSP Environmental (Pty) Ltd. All information is provided "as is" and it must be acknowledged that data, information, and maps are dynamic and in a constant state of maintenance, correction and update. WSP Environmental (Pty) Ltd cannot accept any responsibility for errors, omissions, or positional accuracy where it has not been directly responsible for the production of the data referenced. There are no warranties, expressed or implied, as to the use of this information, including the warranty of merchantability or fitness for a particular purpose. Notification of any errors will be appreciated.

wsp

WSP ENVIRONMENTAL (PTY) LTD
BUILDING C, KINOWATSBURGE
33 SLOANE STREET, BRYANSTON
P.O. BOX 8887, SLOANE PARK 2152, RSA
Tel +27 (0)11 251 1360, Fax +27 (0)11 251 1381, wsp@wspgroup.co.za

DATA SOURCE:
Service Layer Credits: World Ocean Base: Esri, GEBCO, DeLorme, NaturalVue
World Imagery: Maxar

COORDINATE SYSTEM: HARTEBEESTHOEK94 LO29

PROJECT TITLE:
ENERTRAG SECUNDA WEF EIAS

SCALE: 1:55 000 **DRAWN BY:** TS

DATE: 2023/01/10 **REVIEWED BY:** AS

FIGURE NO: **PROJECT NO:** 41104073 **REV:**

© COPYRIGHT RESERVED
The content of this document is privileged and confidential and may not be disclosed or reproduced without the express authorisation of the author, being "WSP Environmental (Pty) Ltd"

