

BIOTHERM ENERGY

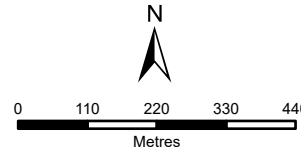
LAYOUT

Legend

- Boundary
- Existing Aggeneys PV Facility
- Soetwater Substation
- Proposed BESS Laydown
- Preferred BESS Facility Location
- No-Go Area

Roads

- National freeway
- Main road



DISCLAIMER
The information on this figure was derived from various digital databases available to WSP Environmental (Pty) Ltd. All information is provided "as is" and it must be acknowledged that data, information, and maps are dynamic and in a constant state of maintenance, correction and update. WSP Environmental (Pty) Ltd cannot accept any responsibility for errors, omissions, or positional accuracy where it has not been directly responsible for the production of the data referenced. There are no warranties, expressed or implied, as to the use of this information, including the warranty of merchantability or fitness for a particular purpose. Notification of any errors will be appreciated.

wsp
WSP GROUP AFRICA (PTY) LTD
BUILDING C, KNIGHTSBRIDGE
33 SLOANE STREET, BRYANSTON
P O BOX 99861, SLOANE PARK, 2152, RSA
Tel +27 (0)11 361 1380, Fax +27 (0)11 361 1381, wsp@wspgroup.co.za

SERVICE LAYER CREDITS: WORLD IMAGERY, MAXAR
WORLD STREET MAP: ESRI, HERE, GARMIN, NGA, USGS

COORDINATE SYSTEM: HARTEBEESTHOEK94 LO19 (E-N)

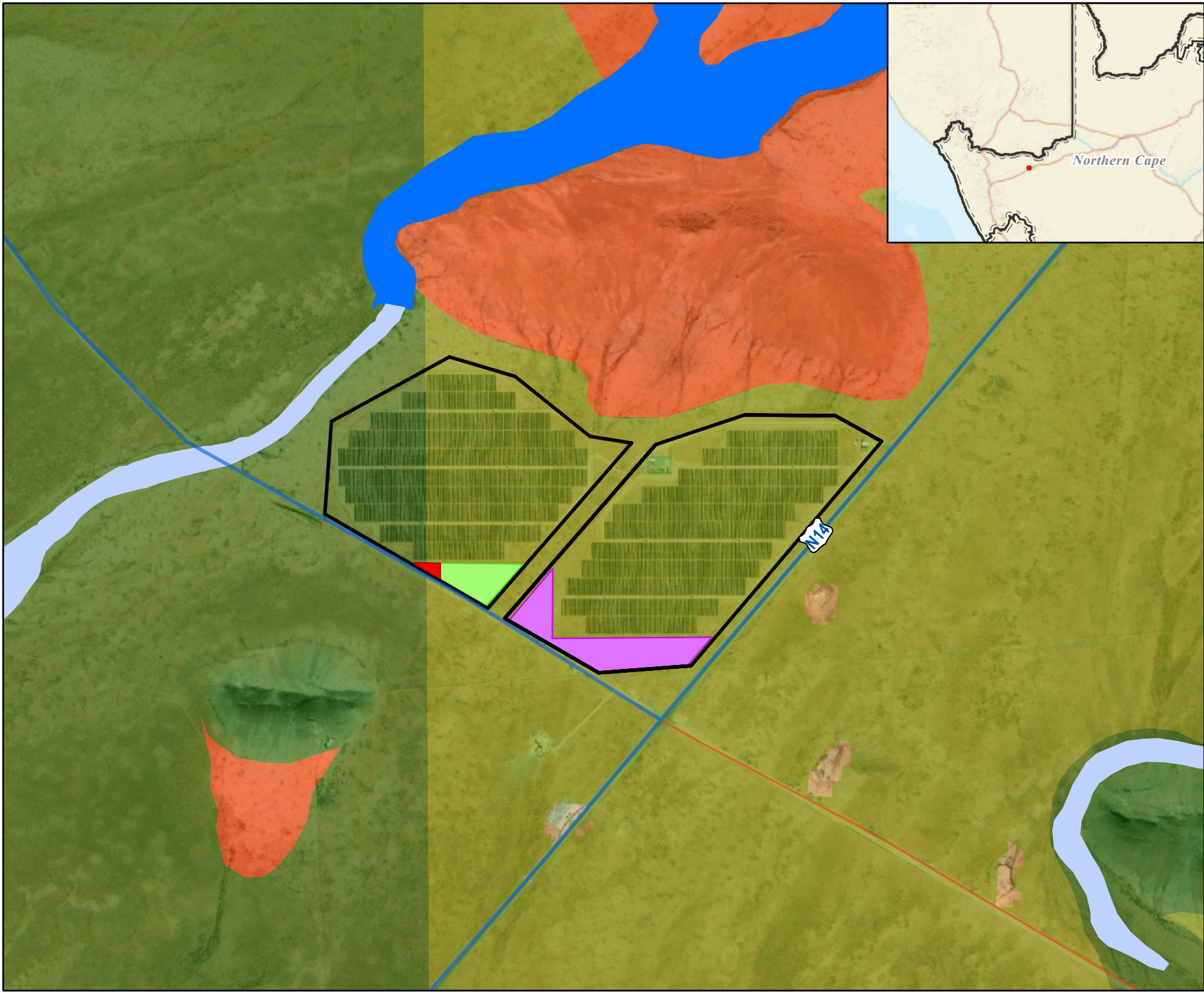
PROJECT TITLE:
BIOTHERM BESS AND 132 KV OHPL

SCALE: 1:12 000 DRAWN BY: TS

DATE: 2023/03/16 REVIEWED BY: AS

FIGURE NO: PROJECT NO: 41103968 REV:

© COPYRIGHT RESERVED
The content of this document is privileged and confidential and may not be disclosed or reproduced without the express authorisation of the author, being "WSP Environmental (Pty) Ltd"



BIOTHERM ENERGY

ENVIRONMENTAL SENSITIVITY

Legend

Boundary

No-Go Area

Northern Cape Critical Biodiversity Area (DENC, 2016)

Critical Biodiversity Area 1

Critical Biodiversity Area 2

Ecological Support Area

National Wetland Map 5 (SANBI, 2018)

Channelled valley-bottom wetland

River

Roads

National freeway

Main road

N

0 160 320 480 640
Metres

DISCLAIMER

The information on this figure was derived from various digital databases available to WSP Environmental (Pty) Ltd. All information is provided "as is" and it must be acknowledged that data, information, and maps are dynamic and in a constant state of maintenance, correction and update. WSP Environmental (Pty) Ltd cannot accept any responsibility for errors, omissions, or positional accuracy where it has not been directly responsible for the production of the data referenced. There are no warranties, expressed or implied, as to the use of this information, including the warranty of merchantability or fitness for a particular purpose. Notification of any errors will be appreciated.



WSP GROUP AFRICA (PTY) LTD

BUILDING C, KNIGHTSBIDGE
33 SLOANE STREET, BRYANSTON
P O BOX 99861, SLOANE PARK, 2152, RSA
Tel +27 (0)11 361 1380, Fax +27 (0)11 361 1381, wspan@wspgroup.co.za

SERVICE LAYER CREDITS: WORLD IMAGERY, MAXAR
WORLD STREET MAP: ESRI, HERE, GARMIN, NGA, USGS

COORDINATE SYSTEM: HARTEBEESTHOEK94 LO19 (E-N)

PROJECT TITLE:
BIOTHERM BESS AND 132 KV OHPL

SCALE: 1:18 000 DRAWN BY: TS

DATE: 2023/03/16 REVIEWED BY: AS

FIGURE NO: PROJECT NO: 41103968 REV:

© COPYRIGHT RESERVED

The content of this document is privileged and confidential and may not be disclosed or reproduced without the express authorisation of the author, being "WSP Environmental (Pty) Ltd"