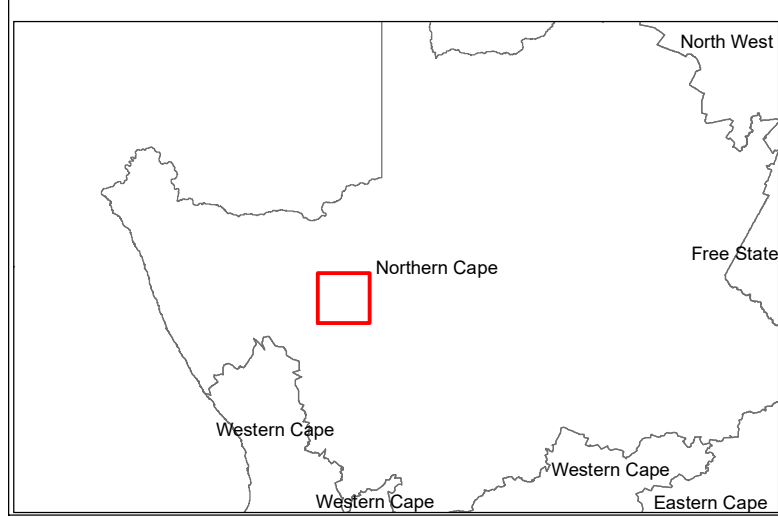


# Amendment of the Korana Solar Energy Facility Grid Connection Infrastructure, Northern Cape Province

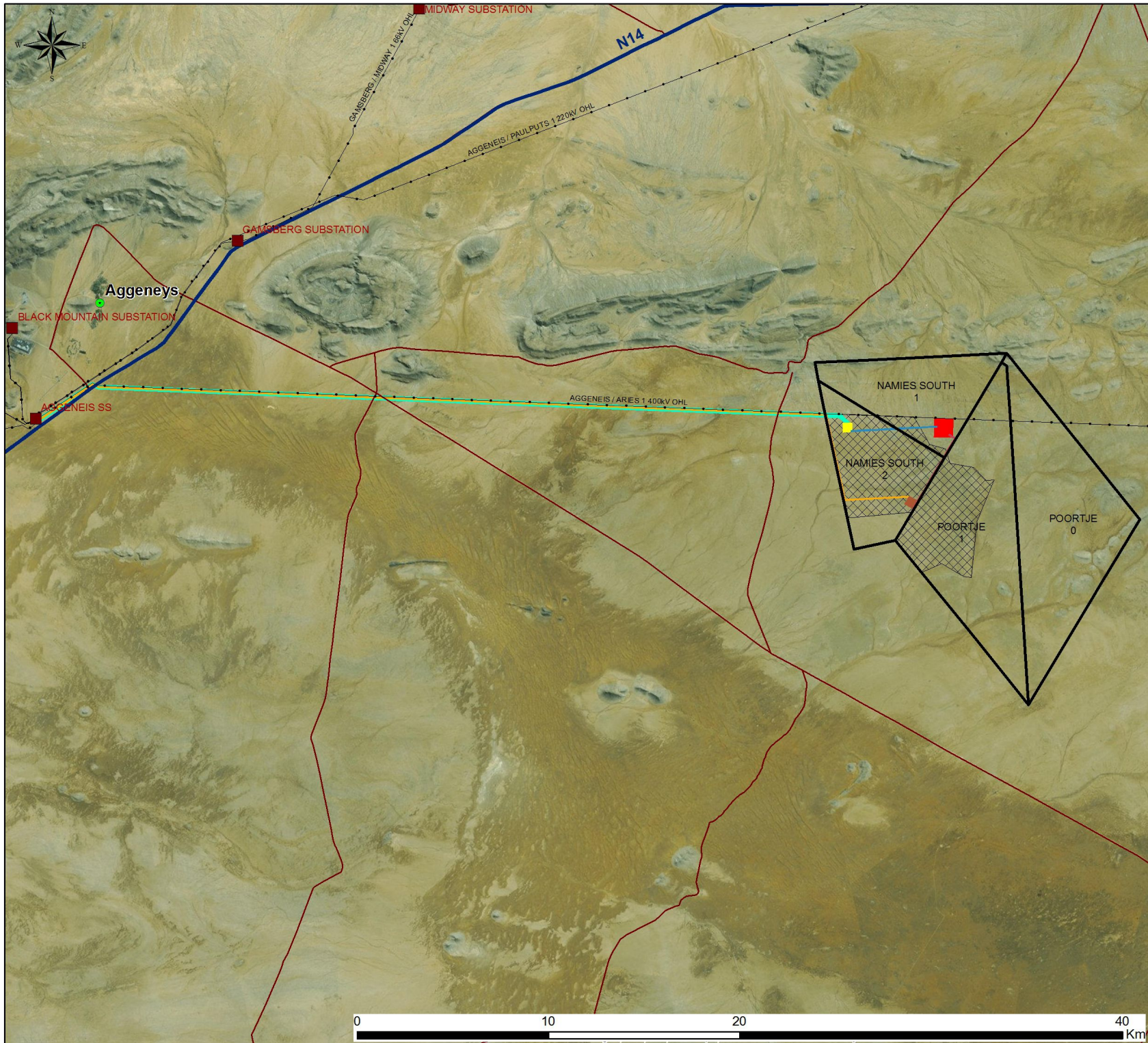
Locality Map

## Legend

- Town
- Existing Substation
- Existing Powerline
- National route
- Regional road
- Main road
- Project Site
- Korana Solar PV Development Area
- Authorised Collector Substation
- Authorised Substation, O&M, Laydown
- Grid Connection Corridor - Alt 1A



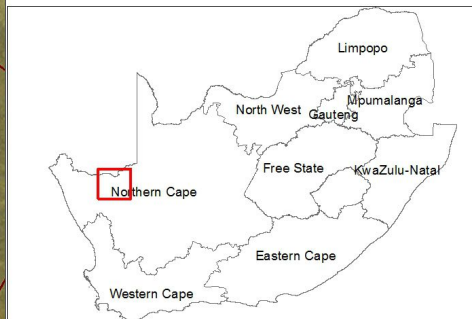




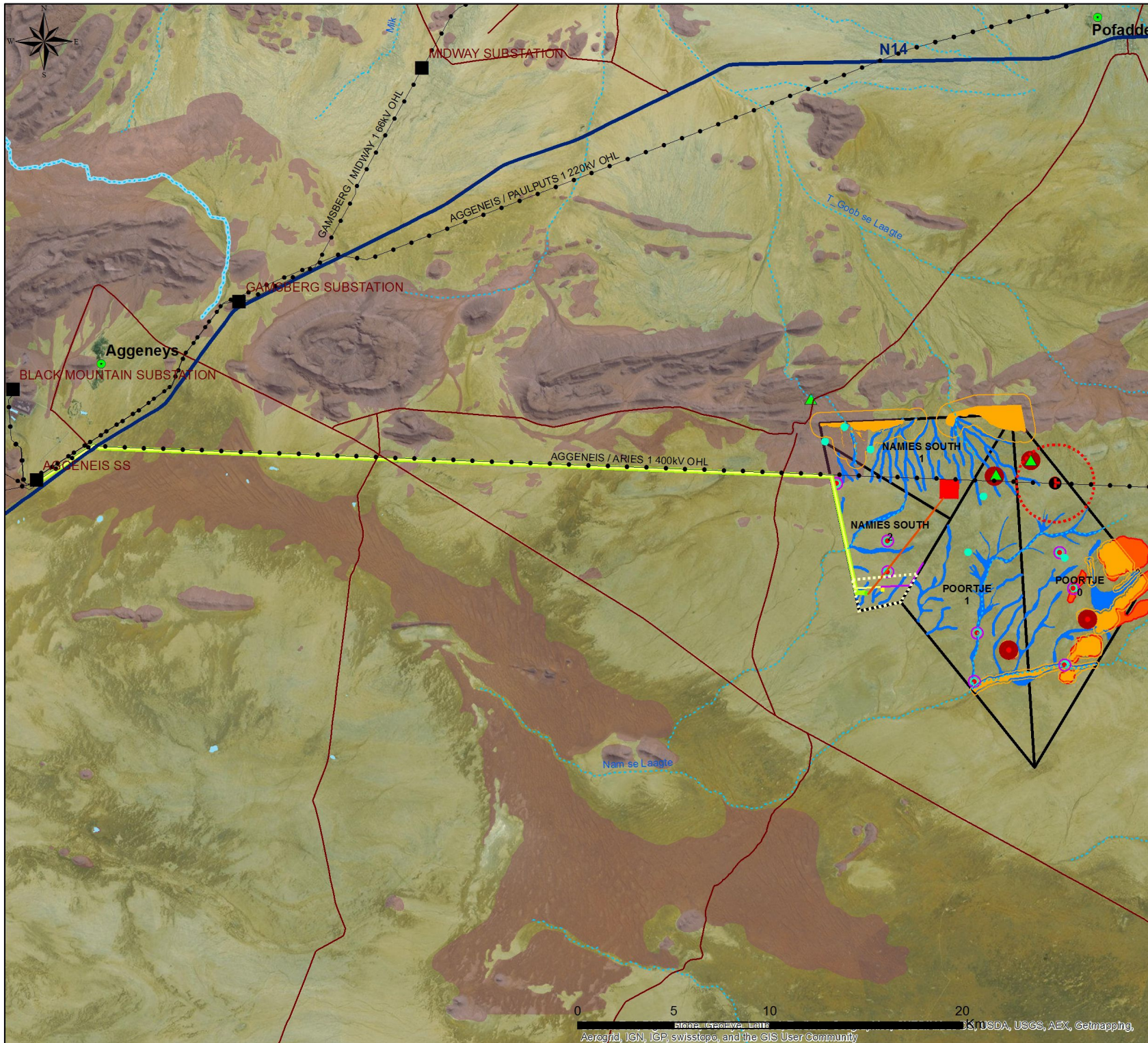
# Proposed Grid connection for Korana Wind Energy Facility Locality Map

## Legend

- Existing Substation
  - Existing Powerline
  - National route
  - Main road
  - Farm portions
- Grid connection alternatives:**
- Collector substation
  - Substation, O&M, Laydown - alternative 1
  - Substation, O&M, Laydown - alternative 2
  - Alternative 1a (100m corridor)
  - Alternative 1b (100m corridor)
  - Alternative 2a (300m corridor)
  - Alternative 2b (300m corridor)
  - Korana Wind Energy Facility







# Proposed Grid connection for Korana Solar Energy Facility

## Environmental sensitivity

### Legend

- Existing Substation
- Existing Powerline
- National route
- Main road
- Perennial rivers
- Non-perennial rivers
- ▭ NFEPA Wetlands
- ▭ Korana Solar Energy Facility

### Layout Plan:

- Collector substation
- ▭ Korana solar Substation, O&M, Laydown - alt 1
- ▭ Korana solar Substation, O&M, Laydown - alt 2
- ▭ Korana alternative 1a (100m corridor)
- ▭ Korana alternative 1b (100m corridor)
- ▭ Korana alternative 2a (300m corridor)
- ▭ Korana alternative 2b (300m corridor)

### Environmental sensitivity:

- ▲ NSD
- Potential Bat Roosts
- Martial Eagle nest
- ▭ Martial Eagle nest (2km buffer)
- ▭ Water points - sensitive avifaunal areas (200m buffer)
- ▭ 500 m Roost Buffer
- ▭ 300 m Roost Buffer
- ▭ High faunal sensitivity (100m buffer)
- ▭ High flora sensitivity
- ▭ Medium-high flora sensitivity
- ▭ NDM terrestrial CBA 2

