



Name: Morné de Jager
Cell: 082 565 4059
E-mail: morne@menco.co.za
Date: 19 March 2019
Ref: Gunstfontein WEF change

Savannah Environmental (Pty) Ltd
PO Box 148
SUNNINGHILL
2157

Attention: Mr. Gideon Raath

Dear Sir

**SPECIALIST STUDY: NOISE IMPACT ASSESSMENT: PROPOSED GUNSTFONTEIN WIND ENERGY FACILITY:
CHANGE OF WIND TURBINE LAYOUT**

The above-mentioned issue as well as report SE-GWF/ENIA/201512-Rev 0 is of relevance.

I, Morne de Jager, conducted an Environmental Noise Impact Assessment (ENIA) during end of 2015 for the proposed Gunstfontein Wind Energy Facility (WEF). Three layouts was presented with the ENIA considering the alternative 1 layout) the preferred layout) in detail.

With the input data as used, the above mentioned assessment indicated that the proposed wind farm will have a noise impact of **low significance** on all potential noise-sensitive developments (NSDs) in the area during both the construction and operational phases, using the Acciona AW125/3000 wind turbine for all operational wind speeds (generating 108.4 dBA).

The developer of the Gunstfontein Wind Farm has since optimized the layout of the wind farm, designing the wind turbines at optimal locations (see **Figure 1**). The change however does not move any wind turbines closer than 1,000 m from any potential NSDs, with the closest wind turbine located more than 1,700 m from the closest NSD. Considering the location of the wind turbines and the potential noise impact, it is my opinion that the change will not increase the significance of the noise impact.

A full noise impact assessment with new modeling will not be required and the recommendations as contained in the previous document will still be valid. This recommendation is based on the outcome of the report which indicated that the extent of the potential impact is limited to 1, 000m from the closest wind turbines (Section 8.3, pg. 85). The impacts, the significance, findings and the recommendations of the noise report (report SE-GWF/ENIA/201512-Rev 0) will remain the same, and it will not be required to do any additional or other acoustic studies for the proposed changes.

Should you require any further details, or have any additional questions, please do not hesitate to call me on the above numbers.

Yours Faithfully,

Morné de Jager
Enviro-Acoustic Research cc

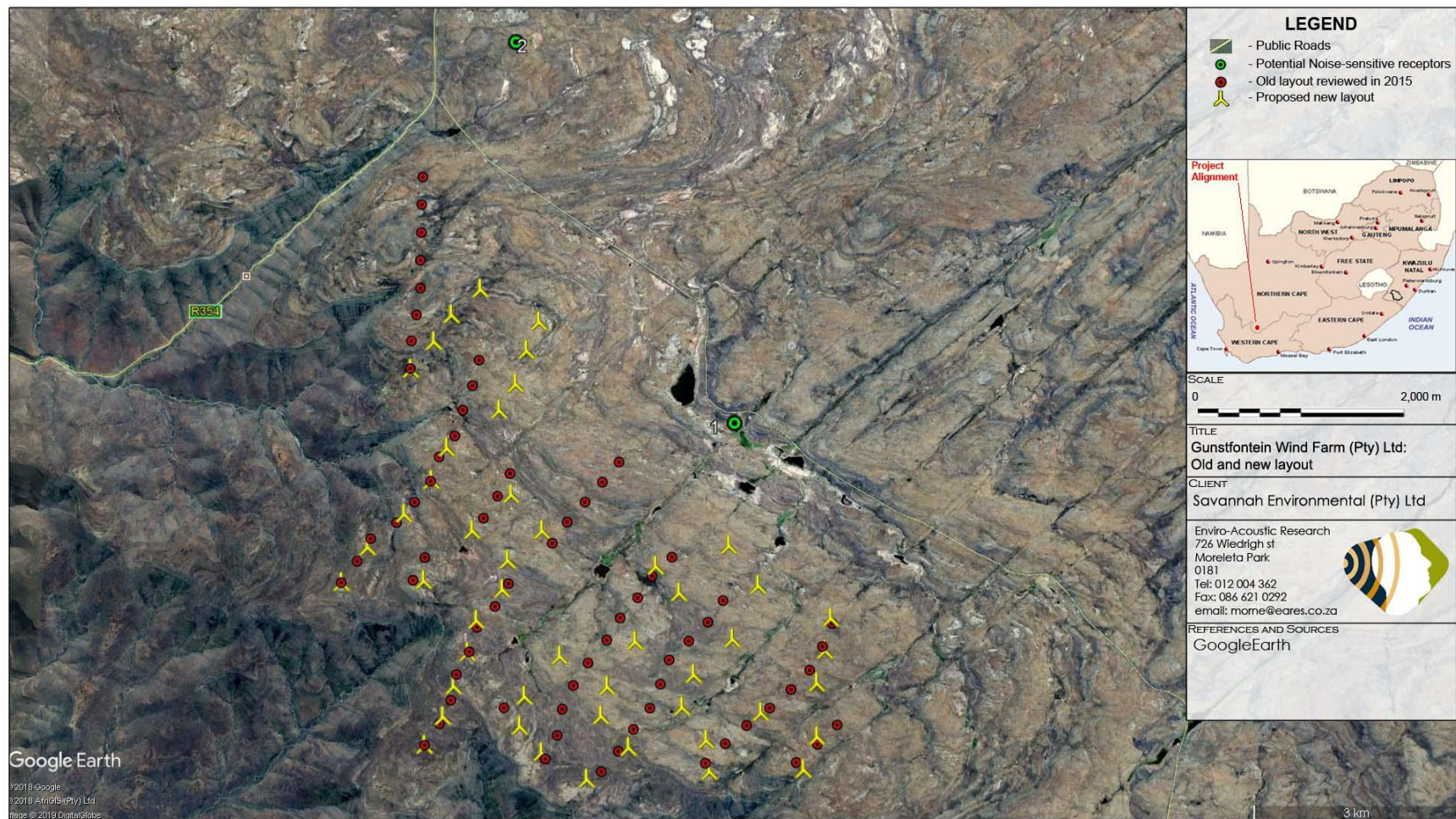


Figure 1: New locations of wind turbines compared with old layout.