

APPENDIX F: PUBLIC NOTIFICATIONS

I&AP DATABASE

OTHER	
NAME	COMPANY
Bam, Dolf	Voorsitter - Amersfoort Distrik Landbou Unie
Beetge, Pierre	Grondeienaar: Welgedacht
Clark, Sharon	BHP Billiton Energy Coal South Africa
Ntiwane, Bongane	Department of Public Works
de Jager, Ria	Volksrust Public Library
de Villiers, Marinda	De Vilscha Lodge
Goodwin, Steve	Plaas Roodekopjes
Halbich, Natasha	Mpumalanga Wetland Forum
Hayes, Janel	Kleinkopje Colliery
Hlatshwayo, Bawinile	Roodekopjes Portion 3
Hlatshwayo, Selby	Department of Agriculture and Land Administration
Hlongwane, Austin	HUURDER
Kunene, Simphiwe	Local Government & Housing
Labuschagne, Willem Andries	Koppieskraal 56 HS
Labuschagne, Andre	Huurder
Labuschagne, André	Plase Koppieskraal en Palmietspruit
Lesufi, Nik	Chamber of Mines South Africa
Mabuza, Thokozile	Chief's Council Daggakraal
Meulenbeld, Paul	Department of Water Affairs
Mokhine, Mabule	EARTHLIFE AFRICA JOHANNESBURG
Ngowe, Simphiwe	Department of Economic Development & Planning
Niekerk, V.	DWAF-Ermelo
Nkosi, Pat	Local Government & Housing
Norje, Pieter	Verteenwoordiger: Mev Ria Beukes
Pretorius, Koos	FSE
Struwig, Cathriena	Amersfoort Public Library
Swanepoel, Gousie	Plaas Tweedepoort
Swart, Careen	Department of Health
Swart, J.	Tweedepoort
van Loggerenberg, Hettie	Plase Strydkraal & Palmietspruit
Van Zyl, Donnie	Landowner
Venter, Herman	Grondeienaar
Venter, Herman	Roodekopjes 67 HS
Venter, Pieter	Strydkraal/ Palmietspruit
Gazide, M	Department of Agriculture, Forestry and Fisheries - Directorate Land Use and Soil Management

ORGANS OF STATE	
Directorate: Environmental Services	MDEDET - Head Office
Surgeon Marebane	MDEDET - Gert Sibande Region
Bheki Mndawe	
Ivan Riggs	Department of Agriculture, Forestry and Fisheries - National
Aubrey Tshivhandekano	Department of Mineral Resources - Directorate: Mineral Regulation: Mpumalanga Region
JM van Aswegen / MJ Musekene	Department of Water Affairs - Regional
CJ Vermaak	
Paul Meulenbeld	Department of Water Affairs - Head Office
Mike Mokgwabone	
Careen Swart	Mpumalanga Department of Health - Directorate Environmental Health
Reuben Sibuyi	Department of Labour
Oupa Mavuso	Pixley ka Seme Local Municipality
Leon Grove	
Sifiso Kunene	
Municipal Manager - DR Mango	Gert Sibande District Municipality
Dan Hlanyane	Gert Sibande District Municipality - Air Emissions Licensing
VI Prinsloo	Mpumalanga Tourism and Parks Agency
Godfrey Tshivhalavhala	SAHRA - Mpumalanga
Nkosazana Machete	
Stephan Pienaar	Mpumalanga Public Works, Roads and Transport
Ndalisa Jele	Department of Public Enterprises
David Dube	Department of Human Settlements - Mpumalanga
Nomonde Mesatywa	Department of Trade and Industry
G.O Xaba (Acting)	MDARDLA
HOD: Ronnie Masilela	Mpumalanga Social Development

WARD COUNCILLORS		
Volksrust	Cllr Name	Ward
	TA Mazibuko	1
	BG Mavuso	2
	NE Hlakutse	3
	D Jager	4
Amersfoort	Cllr Name	Ward
	OT Shabangu	7
	EM Thwala	8
Daggakraal	Cllr Name	Ward
	BJ Mhlanga	9
	MS Motho	10
	ZE Dlodlu	11

LANDOWNERS			
Farm Name	Number	Portions	Owner
Roodekopjes	67 HS	0	Eskom Holdings Ltd
Eskom Owned		1	Eskom Holdings Ltd
		2	Eskom Holdings Ltd
		3	Eskom Holdings Ltd
		4	MJ Lourens
Bergvliet	65 HS	1	Edward Johannes Jurgens Deacon
		3	Magdalena Maria Lambrechts
		4	Jacobus Ignatius van Niekerk
		5	Transnet Ltd
		6	Eskom Holdings Ltd
		7	Magdalena Maria Lambrechts
		8	Edward Johannes Jurgens Deacon
		9	Gemerton Kenneth Semelane
		10	Gemerton Kenneth Semelane
		11	Jomar Trust
		12	Jacobus Ignatius van Niekerk
		13	Land & Lanbou-Ontwikkelingsbank van Suid-Afrika
		14	Joubert Kerkhof Voogdyskap
		15	Edward Johannes Jurgens Deacon
		16	Jacobus Ignatius van Niekerk
		17	Jacobus Ignatius van Niekerk
		18	Jacobus Ignatius van Niekerk
		19	Gemerton Kenneth Semelane

LANDOWNERS			
Farm Name	Number	Portions	Owner
		20	Magdalena Maria Lambrechts
		21	Eskom Holdings Ltd
		22	Landless People of Daggakraal Hlanganani Trust
		23	Landless People of Daggakraal Hlanganani Trust
		24	Jacobus Ignatius van Niekerk
		25	Munisipaliteit van Amersfoort
		26	Munisipaliteit van Amersfoort
		27	Munisipaliteit van Amersfoort
		28	Eskom Holdings Ltd
Koppieskraal	56 HS	0	Izak Abraham Fourie
		1	Koppieskraal Trust
		2	Willem Andries Labuschagne
		3	Johan Georg Snyman Holtzhauzen
		5	Johan Georg Snyman Holtzhauzen
		10	Izak Abraham Fourie
		11	Izak Abraham Fourie
		12	Izak Abraham Fourie
		13	Kleinboet Lotz Trust
Palmietspruit	68 HS	1	S E A Barnard Familie Trust
		2	Johan Bam Trust
		3	Drie Susters Boerdery CC
		4	Jacomina Hendrina Lotz
		5	Johan Bam Trust
		6	Johan Bam Trust
		7	Eskom Holdings Ltd
		8	Johan Bam Trust
Rietfontein	66 HS	0	HPG Terblanche Boerdery Pty Ltd
Eskom Owned		1	Jomar Trust
		2	HPG Terblanche Boerdery Pty Ltd
		3	HPG Terblanche Boerdery Pty Ltd
		4	HPG Terblanche Boerdery Pty Ltd
		5	HPG Terblanche Boerdery Pty Ltd
		6	Dirk Cornelis Janse van Noordwyk
		8	HPG Terblanche Boerdery Pty Ltd
		9	HPG Terblanche Boerdery Pty Ltd
		10	HPG Terblanche Boerdery Pty Ltd

LANDOWNERS			
Farm Name	Number	Portions	Owner
		11	Eskom Holdings Ltd
Strydkraal	53 HS	0	Daniel Els Testamentere Trust
		1	Johannes Paul Fick
		2	Daniel Els Testamentere Trust
		3	Johannes Paul Fick
		4	Jacobus Johannes Petrus Swart
		5	Daniel Els Testamentere Trust
		6	S E A Barnard Familie Trust
		7	Drie Susters Boerdery CC
Tweedepoort	54 HS	0	Tweedepoort 54 Pty Ltd
		1	Jan Daniel Jacobus Swart
		2	Pieter Gerhardus Richards
		5	Jan Daniel Jacobus Swart
		8	Naauwpoort Trust
		9	Siyaphambile Communal Prop Assoc
		10	Louie Jacob Kinnear
Weiland	59 HS	0	Ewoud van der Merwe (Pty) Ltd
Kleinrietfontein	117 HS	(Not established)	Part of Rietfontein
Japtrap	115 HS		Part of Roodekopjes and Rietfontein
Witkoppies	81 HS		

BACKGROUND INFORMATION
DOCUMENT & LETTER TO I&APS

08 October 2012

DEA Reference: 14/12/16/3/3/3/61
Our Reference: E02.JNB.000308

Dear Interested and Affected Party (I&AP)

ENVIRONMENTAL IMPACT ASSESSMENT AND WASTE MANAGEMENT LICENSE APPLICATION FOR THE UNDERGROUND COAL GASIFICATION PROJECT AND ASSOCIATED INFRASTRUCTURE IN SUPPORT OF CO-FIRING OF GAS AT THE MAJUBA POWER STATION, AMERSFOORT, MPUMALANGA

Notice is hereby given in terms of the National Environmental Management Act, 1998 (Act No 107 of 1998) as amended, Environmental Impact Regulations (2010) as well as the National Environmental Management: Waste Act, 2008 (Act No 59 of 2008) that Eskom Holdings SOC Ltd ('Eskom') has submitted an integrated application for Environmental Authorisation and Waste Management License to the Department of Environmental Affairs (DEA). Eskom intends to undertake a Scoping and EIA study and submit Scoping and Environmental Impact Reports to DEA in support of the proposed project.

The proposed project entails the following:

- Implementation of underground coal gasification (UCG) technology on the farm Roodekopjes 67HS (Portions 1, 2, 3 and remaining extent). UCG is a process whereby coal is converted *in situ* into combustible gas that can be used for power generation. The study area falls within the administrative boundaries of Pixley ka Seme Local Municipality.
- In order to meet the fuel requirements for optimal power generation at the Majuba Power Station, Eskom proposes the use of synthetic gas or syngas (15000 Nm³/hr) produced by the UCG process as a supplementary fuel source within the boilers at the power station. The 15000 Nm³/hr plant will be scaled up to 70000 Nm³/hr.
- Ancillary infrastructure associated with the project on the farm Roodekopjes 67HS include: production and injection wells, monitoring boreholes, gas treatment plant, process and raw water dams, site offices, access roads and electrical infrastructure.
- In addition, a wastewater treatment works on Portion 21 of Bergvliet 65HS and a new service road to be constructed between the entrance to the site office complex on Portion 17 of farm Bergvliet 65HS and Portions 4 and 5 of the farm Rietfontein 66HS before linking up to the UCG site on the borders of Portions 2 and 3 of the farm Roodekopjes 67HS will be included in this study.
- Eskom are also in the process of applying for an Integrated Water Use License (IWULA) from the Department of Water Affairs for the water uses associated with the project.

Please refer to the attached Background Information Document (BID) for more information regarding the project.

Project Background:

An Environmental Scoping Study (ESS) was initiated in 2009 for the UCG pilot project and associated infrastructure including the 40 – 140 MW OCGT demonstration plant and gas treatment plants (DEA Ref 12/12/20/1617). The environmental impacts associated with the project required investigation in compliance with the EIA Regulations (2006) published in Government Notice No. R. 385 to No. R. 387 and read with Section 24 (5) of the National Environmental Management Act - NEMA (Act No 107 of 1998) – as amended). The final Environmental Scoping Report for the project was accepted by the Department of Environmental Affairs (DEA) in March 2010.

Due to the research and development (R&D) nature of the project, detailed engineering information / design hindered the progress of the EIA process, which resulted in a time lapse between the ESS and the EIA study. The applicant (Eskom) was then advised by the DEA to start the EIA study afresh under the EIA Regulations (2010). The project study area has since also been reduced to focus only on the farm Roodekopjes 67HS, Bergvliet 65 HS (Portions 17 & 21) and Rietfontein 66HS (Portions 4 & 5). In the



SSI Engineers and Environmental Consultants (Pty) Ltd
trading as Royal HaskoningDHV

Reg No. 1966/001916/07

PO Box 867, Gallo Manor, 2052, South Africa

T: +27(0)11 798 6000 / F: +27(0)11 798 6005

Email: johannesburg@rhdhv.com

www.rhdhv.co.za

previous ESS the following farms were also included as part of the study area: Rietfontein 66HS (including Klein Rietfontein 117HS); Japtrap 115HS; Palmietspruit 68HS; Tweedepoort 54HS; Koppieskraal 56HS; Bergvliet 65HS; Weiland 59HS and Strydkraal 53HS. The 40 – 140 MW OCGT demonstration plant also does not form part of the scope of the current ESS.

NOTICE OF AVAILABILITY OF THE DRAFT ENVIRONMENTAL SCOPING REPORT FOR PUBLIC REVIEW

All I&APs are hereby notified that the draft Environmental Scoping Report (ESR) will be available for public comment from **22 October 2012 to 07 January 2013**. The draft ESR will summarise key environmental issues identified to date and will be available at the following places:

- Volksrust Public Library, Cnr Joubert & Laingsnek Street (Volksrust)
- Amersfoort Public Library, Cnr Plein & Bree Street (Amersfoort)
- UCG Mine Site Offices, Majuba Colliery, Bergvliet, Amersfoort
- Office of Royal HaskoningDHV, 78 Kalkoen Street, Monument Park (Pretoria)
- Royal HaskoningDHV website (<http://www.rhdhv.co.za/pages/services/environmental/current-projects.php>)

WHO SHOULD YOU CONTACT?

Royal HaskoningDHV is the appointed independent Environmental Assessment Practitioner (EAP), undertaking the required environmental impact assessment and public participation process for the project. To register as an Interested and Affected Party (I&AP) and to obtain more details about the project, please submit your name, contact information and interest in the project on the attached registration and comment form to:

Sibongile Hlomuka
Royal HaskoningDHV
PO Box 867, Gallo Manor, 2052
Tel: 011 798 6000
Fax: 011 798 6010
Email: sibongile.hlomuka@rhdhv.com

Yours sincerely,

Sibongile Hlomuka

INTEGRATED ENVIRONMENTAL IMPACT ASSESSMENT AND WASTE LICENSE STUDY FOR THE UNDERGROUND COAL GASIFICATION PROJECT AND ASSOCIATED INFRASTRUCTURE IN SUPPORT OF CO-FIRING OF GAS AT THE MAJUBA POWER STATION, MPUMALANGA

DEA REF NO: 14/12/16/3/3/3/61

BACKGROUND INFORMATION DOCUMENT OCTOBER 2012

WHAT DOES THIS DOCUMENT TELL YOU?

This document aims to provide you, as an Interested and/or Affected Party (I&AP), with background information regarding the integrated application for Environmental Authorisation for the Underground Coal Gasification (UCG) Project and associated infrastructure on Portions 1, 2, 3 and remaining extent of the farm Roodekopjes 67 HS, Portions 17 and 21 of the farm Bergvliet 65HS and Portions 4 and 5 of the farm Rietfontein 66HS in Mpumalanga Province, as well as the required environmental studies to be undertaken (refer to *Annexure A for Locality Map of the study area*). Any person, company, authority or other entities that might be directly or indirectly affected by the proposed activity can register as an Interested or Affected Party (I&AP).

It further indicates how you can become involved in the project, receive information, or raise issues which may concern and/or interest you. The sharing of information forms the basis of the public participation process and offers you the opportunity to become actively involved in the project from the outset. Input from I&APs ensures that all potential environmental issues are considered within the study.

STUDY AREA

The UCG gasification operations will take place on Portions 1, 2, 3 and remaining extent of the farm Roodekopjes 67HS (Eskom-owned) located within Pixley ka Seme Local Municipality in Mpumalanga. The total extent of the farm is 2449 ha and it is anticipated that approximately 1450 ha will be mined using UCG technology. The site is adjacent to the Majuba Power Station (refer to the Locality Map at the end of this document).

Associated infrastructure such as a wastewater treatment works and site offices are located on Portion 21 of the farm Bergvliet 65HS. In addition, a new service road will be constructed from the site offices mentioned above to the UCG pilot plant. The road will traverse Portions 4 and 5 of the farm Rietfontein 66HS. A 30 m

servitude has been registered in Eskom's name in this regard.

PROJECT DESCRIPTION

Underground Coal Gasification (UCG) is a process is a process whereby coal (280 – 300 m deep) is converted *in situ* into a combustible gas that can be used for power generation, and is one of the new clean coal technologies being investigated for implementation by Eskom.

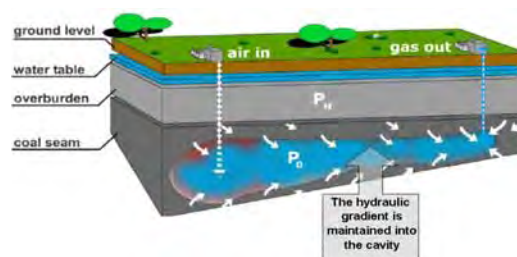


Figure 1: Schematic illustration of the UCG process

The air is compressed and is injected into the underground gasification reactor, the reactor utilises the existing coal seam water for the gasification stream, this results in the consumption and conversion of the in seam coal into a *syngas*. The gas is brought to the surface via production wells; the gas is diverted to a common manifold which leads to a wet gas transmission pipeline, which is also accompanied by a 50 mm condensate pipeline that is used to collect this by-product. The wet gas feeds the gas treatment plant; once the liquid portion is removed the dry gas is either transmitted to Majuba Power Station or flared at the site if no boilers are available.

The condensate collected from the process will be transferred to a process water dam where it will be treated to a sufficient water quality where it will either be used to; support local irrigation, re-injected into the coal seam aquifer or purified to Majuba raw water quality requirements.

In order to meet the fuel requirements for optimal power generation at the Majuba Power Station, Eskom proposes the use of synthetic gas or syngas (15000 Nm³/hr) produced by the UCG process as a supplementary fuel source within the boilers at the power station. The 15000 Nm³/hr plant will be scaled up to 70000 Nm³/hr and based on the outcomes of the 70000 Nm³/hr plant, Eskom may investigate the option of a commercial size power plant based on UCG technology.

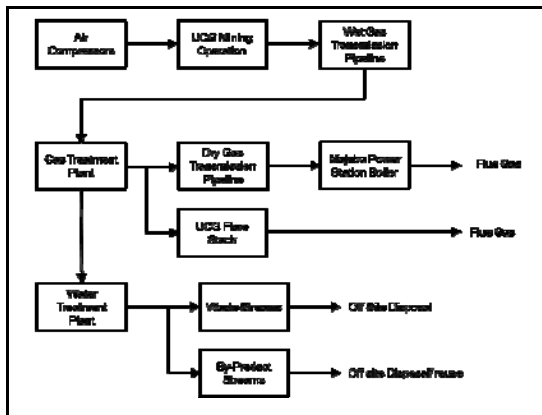


Figure 2: Block flow diagram for the 70000 Nm³/hr pilot plant

UCG has the potential to extract coal resources previously regarded as either uneconomic or inaccessible due to depth, seam thickness, seam slope, seam fracturing and displacement, or other mining and safety considerations.

The major components of the project include:

- Gasfield (comprising drilling, exploration and monitoring wells, gasifier units, gas pipeline)
- Air compressors
- Gas Treatment Plant including flare
- Process and raw water dams including potable water storage tanks
- Wastewater treatment works
- Fuel storage tanks
- Access roads (new service road and internal access roads)
- Site Offices
- Electrical infrastructure

PROJECT HISTORY

Eskom commenced with UCG activities on the farm Roodekopjes 67HS in January 2007 as part of a phased development and implementation plan (*New Order Prospecting Right granted in 2005 (F/2005/03/11/0001) by Department of Minerals and Energy*).

During the planning process, the initial *modus operandi* was to co-fire at the Majuba Power Station with 15000 Nm³/hr of UCG syngas. This would then allow the Eskom engineering team to determine the characteristics

of the gas (i.e. quality, quantity and stability) in order to drive a 40 – 140 MW Open Cycle Gas Turbine (OCGT) demonstration plant - *this was the subject of an earlier EIA study that commenced in 2009 under the auspices EIA Regulations (2006)*. This demonstration plant would have been the basis upon which a decision would be made for a 2100 MW Combined Cycle Gas Turbine (CCGT) commercial power station.

From the gas production so far, the Eskom engineering team has come to the conclusion that the production of 15000 Nm³/hr of UCG syngas is not sufficient to determine the characteristics of the gas with sufficient accuracy to continue with the establishment of the 40 – 140 MW demonstration plant. This component of the project has subsequently been removed.

The study area has also been reduced as the focus is only on the farm Roodekopjes 67HS and portions of Rietfontein 66HS and Bergvliet 65HS.

POTENTIAL ENVIRONMENTAL IMPACTS ASSOCIATED WITH THE PROPOSED PROJECT

A number of potential environmental impacts associated with the project have been identified. As part of the EIA study, these potential impacts will be assessed through the following specialist studies:

Specialist Field	Organisation
Soils and Agricultural Potential	<i>Terra Soil Science</i>
Biodiversity	<i>Bathusi Environmental Consulting</i>
Wetlands	<i>Royal HaskoningDHV</i>
Visual Impact	<i>MetroGIS & Royal HaskoningDHV</i>
Air Quality	<i>Royal HaskoningDHV</i>
Heritage	<i>Johnny van Schalkwyk</i>
Micro-Economic Assessment	<i>MasterQ Research</i>
Social	<i>MasterQ Research</i>
Geology Peer Review	<i>Mine Geology Services</i>
Groundwater Peer Review	<i>Reinhard Meyer</i>

ENVIRONMENTAL STUDIES

An Environmental Impact Assessment (EIA) is an effective planning and decision-making tool, which allows for the identification of potential environmental consequences of a proposed project, and its management through the planning process.

In order to obtain the necessary environmental approval from the Department of Environmental Affairs (DEA), a Scoping and Environmental Impact Assessment study will be undertaken in terms of Government Notice No. R.

543, R.544, R.545 and R.546 of the EIA Regulations (2010) as well as Government Notice 718 of 2009 of the National Environmental Management: Waste Act, 2008.

EIA Regulations (2010)

Listing Notice	Activities
Listing Notice 1, GN. R.544	11, 12, 13, 18, 20, 22, 23.ii, 28, 48, 49, 56
Listing Notice 2, GN. R.545	4, 5, 6, 15, 19, 20, 22, 26
Listing Notice 3, GN. R.546	4, 10, 13, 14, 16, 19, 23, 24, 26

GN R.718 of the NEM: Waste Act, 2008

GN R.718	Activities
Category A	11, 12, 16 & 19
Category B	2 & 7

INTEGRATED WATER USE LICENSE APPLICATION (IWULA)

The IWULA process will be conducted in accordance with Section 40 of the National Water Act, 1998 (Act No 36 of 1998).

The proposed activities associated with the UCG process as well as infrastructure (process and raw water dam, pipelines, access roads etc), require various water use authorisations from the competent authority (Department of Water and Environmental Affairs).

The following water uses are triggered:

Relevant water use	Applicability
Section 21 (a)	Indirect abstraction of water through the gasification process
Section 21 (b)	Process and raw water dam
Section 21 (c)	Working within a watercourse for the construction of UCG related linear infrastructure i.e. pipelines (water and gas), roads (main and access)
Section 21 (e)	The treatment of wastewater as well as the possibility of supporting local irrigation activities
Section 21 (f)	Wastewater treatment plant system
Section 21 (g)	Potential seepage, leak, pollution from the mining operations as well as process and raw water dams
Section 21 (h)	Linked to the gasification process
Section 21 (i)	Working within a watercourse for the construction of UCG related linear infrastructure i.e. pipelines (water and gas), roads (main and access)
Section 21 (j)	Water produced during the gasification process

The IWULA process being followed for the project is presented in Figure 3 below.

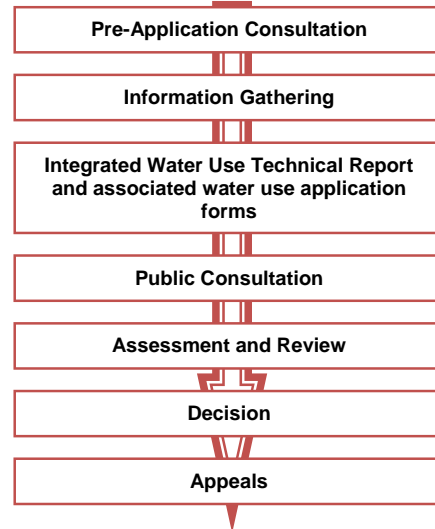


Figure 3: Integrated Water Use License Application process

ROYAL HASKONINGDHV AS INDEPENDENT ENVIRONMENTAL ASSESSMENT PRACTITIONER

Eskom Holdings (SOC) Ltd. has appointed Royal HaskoningDHV, as an independent Environmental Assessment Practitioner (EAP), to undertake environmental studies to identify and assess all potential environmental impacts associated with the proposed project. As part of these environmental studies, all I&APs will be actively involved through a public participation process. The project will consist of two major phases:

- 1) Phase I: Environmental Scoping Study and Plan of Study for EIA; and
- 2) Phase II: EIA Study and Environmental Management Programme (EMPr)

These two phases will culminate in the approval or rejection of the project i.e. positive or negative Environmental Authorisation.

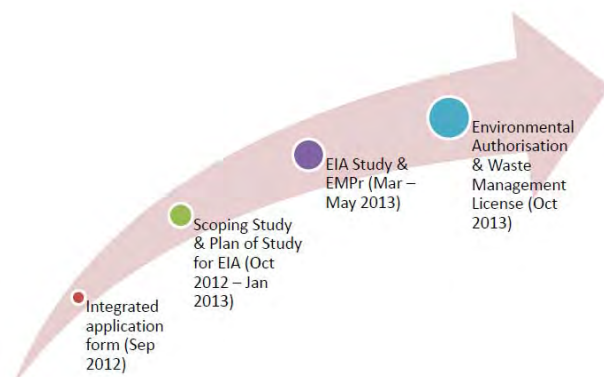


Figure 4: Project timeline

WHAT IS YOUR ROLE?

If you consider yourself an I&AP for the proposed project, we encourage you to make use of the opportunities created by the public participation process to become involved in the process and raise the issues and concerns which affect and/or interest you, and about which you require more information.

By completing and submitting the accompanying registration form, we will ensure that you are registered as an I&AP for the project, and that your concerns or queries regarding the project will be noted. We will also ensure that you are provided with future information pertaining to the project as well as the availability of the draft and final Environmental Reports (i.e. Scoping and EIR) for comment.

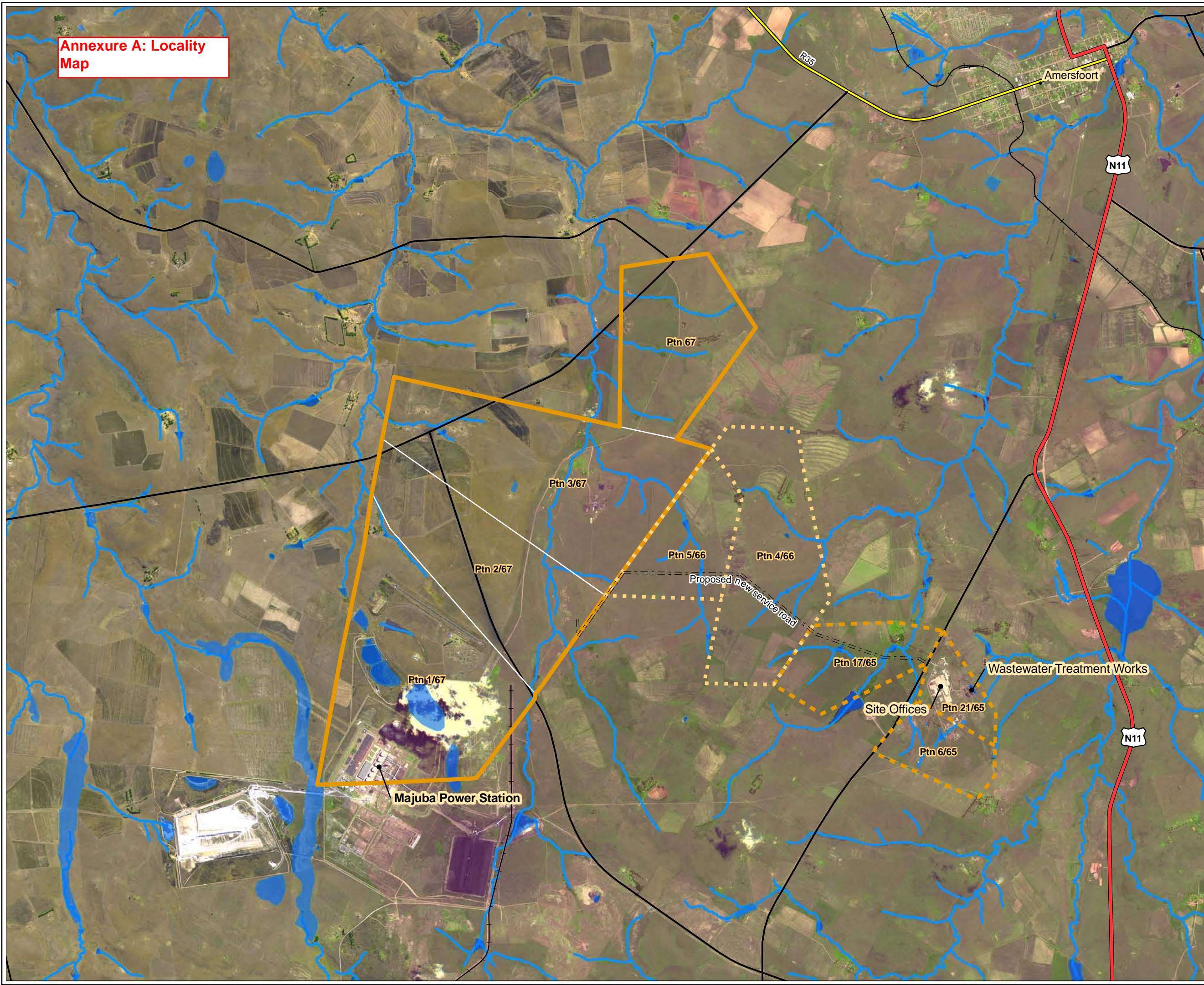
COMMENTS AND QUERIES

Please direct all comments, queries or issues to:

Sibongile Hlomuka
Royal HaskoningDHV
PO Box 867, Gallo Manor, 2052
Tel: 011 798 6000
Fax: 011 798 6010
Email: sibongile.hlomuka@rhdhv.com



Annexure A: Locality Map



- LEGEND:
- Proposed New Service Road
 - Rietfontein 66 HS
 - Bergvliet 65 HS
 - Roodekopjes 67 HS
 - Hydrology - Dams
 - Hydrology - Rivers

PROJECTION:
 Transverse Mercator
 WGS LO 29

SCALE: 1:50 000

DATA:

PREPARED BY:

CLIENT:

TITLE:
**LOCALITY MAP:
 UNDERGROUND COAL GASIFICATION
 PROJECT AND ASSOCIATED INFRASTRUCTURE
 IN SUPPORT OF CO-FIRING OF GAS AT
 THE MAJUBA POWER STATION,
 AMERSFOORT, MPUMALANGA**

Project	Date	September 2012
Data	Map	
Type:	No:	

INTEGRATED ENVIRONMENTAL IMPACT ASSESSMENT AND WASTE LICENSE STUDY FOR THE UNDERGROUND COAL GASIFICATION PROJECT AND ASSOCIATED INFRASTRUCTURE IN SUPPORT OF CO-FIRING OF GAS AT THE MAJUBA POWER STATION, MPUMALANGA

DEA REF NO: 14/12/16/3/3/3/61

REGISTRATION AND COMMENT FORM

KINDLY COMPLETE THIS FORM IN DETAIL AND RETURN IT TO:

Sibongile Hlomuka
Royal HaskoningDHV
PO Box 867, Gallo Manor
2052

Telephone: 011 798 6000
Fax: 011 798 6010
Email: sibongile.hlomuka@rhdhv.com

PERSONAL DETAILS:

Title: First Name:

Surname:

E-mail:

Telephone: Fax:

Organisation (if applicable):

Capacity (e.g. Chairperson, member, etc):

Physical Address:

Town: Code:

Postal Address:

Town: Code:

1. What is your main area of interest with regards to the proposed project?

.....
.....
.....
.....
.....
.....
.....
.....

2. Do you have any points of concern or support regarding the proposed project?

If "yes", please briefly list these in point form:

.....
.....
.....
.....
.....
.....
.....
.....

08 Oktober 2012

DEA Verwysing: 14/12/16/3/3/3/61
Ons Verwysing: E02.JNB.000308

Geagte Belanghebbende en Geaffekteerde Party (B&GP)

OMGEWINGS IMPAK STUDIE EN AFVAL KONTROLE LISENSIE AANSOEK VIR DIE ONDERGRONDSE STEENKOOLO GASIFIKASIE PROJEK EN GEASSOSIEERDE INFRASTRUKTUUR TER STAWING VAN MEDE-ONTBRANDING VAN GAS BY DIE MAJUBA KRAGSTASIE, AMERSFOORT, MPUMALANGA

Hiermee word u kennis gegee in terme van die Nasionale Omgewings Bestuur Wet, 1998 (Wet Nr. 107 van 1998) soos gewysig, Omgewings Impak Regulasies (2010) asook die Nasionale Omgewings Bestuur: Afval Stowwe Wet, 2008 (Act Nr. 59 van 2008) that Eskom Holdings SOC Ltd ("Eskom") 'n geïntegreerde aansoek vir Omgewings Magtiging en Afval Stowwe Bestuurs Lisensie ingedien het by die Departement van Omgewing Sake (DEA). Eskom is van voorneme om 'n Omgewings Werks Omvang Studie en Omgewings Impak Studie te onderneem en hierdie verslae by die DEA in te dien ter ondersteuning van die voorgestelde projek.

Die voorgestelde projek behels die volgende:

- Implementering van die ondergrondse steenkool gasifikasie (UCG) tegnologie op die plaas Roodekopjes 67 HS (Gedeeltes 1, 2, 3 en resterende gedeelte). UCG is 'n proses waardeur die steenkool omgesit word *in situ* in 'n vlambare gas wat gebruik kan word vir kragopwekking. Die studie area is geleë in die administratiewe grense van Pixley ka Seme Plaaslike Munisipaliteit.
- Ten einde die brandstof vereistes vir optimale kragopwekking by Majuba Kragstasie te bereik, het Eskom voorgestel dat die sintetiese gas (15000 Nm³/hr) soos geproduseer deur die UCG proses as 'n aanvullende brandstof bron in die verbranders van die kragstasie gebruik word. Die 15000 Nm³/hr aanleg sal opgegradeer word na 70000 Nm³/hr.
- Geassosieerde infrastruktuur van die projek op die plaas Roodekopjes 67 HS sluit in: produksie en inspuittings gate, kontrole gate, gas behandelings aanleg, proses en rou water damme, aanleg kantore, toegangspaaie en elektriese infrastruktuur.
- Aanvullend hiertoe is 'n afval water behandelings werke op Gedeelte 21 van die plaas Bergvliet 65 HS en 'n nuwe dienspad wat gebou gaan word tussen die ingang van die kantoor gebou op Gedeelte 17 van die plaas Bergvliet 65 HS en Gedeeltes 4 en 5 van die plaas Rietfontein 66 HS alvorens die UCG aanleg op die grense van Gedeeltes 2 en 3 van die plaas Roodekopjes 67 HS ingesluit gaan word in hierdie studie.
- Eskom is ook in die proses om aansoek te doen vir 'n Geïntegreerde Water Gebruik Lisensie (IWULA) vanaf die Departement van Waterwese vir die water gebruike geassosieer met die projek.

Verwys asseblief na die aangehegte Agtergrond Informatie Dokument (BID) vir meer informasie aangaande die projek.

Projek Agtergrond:

'n Omgewings Werks Omvang Studie (ESS) is in 2009 begin vir die UCG loods projek en geassosieerde infrastruktuur, insluitende die 40 – 140MW OCGT demonstrasie aanleg en gas behandelings anleg (DEA Ref 12/12/20/1617). Die omgewings impakte geassosieer met die projek vereis 'n verdere ondersoek in terme van die EIA Regulasies (2006) gepubliseer in Goewernments Kennisgewing Nr. R. 385 tot Nr. R. 387 soos gelees saam Artikel 24 (5) van die Nasionale Omgewings Bestuurs Wet – NEMA (Wet Nr 107 van 1998) – soos gewysig. Die finale Omgewings Werks Omvang Studie vir die projek was aanvaar deur die Departement van Omgewing Sake (DEA) in Maart 2010.

As gevolg van die navorsing en ontwikkeling (R&D) natuur van die projek, het in diepte ingenieurs informasie / ontwerp die proses vertraag in terme van die EIA proses, wat gelei het na tydverskil tussen die ESS en die EIA studies. Die aansoeker (Eskom) was ingelig deur die DEA om 'n nuwe EIA studie te begin onder die EIA Regulasies van 2010. Die projek studie area het intussen ook



SSI Engineers and Environmental Consultants (Pty) Ltd
trading as Royal HaskoningDHV
Reg No. 1966/001916/07
PO Box 867, Gallo Manor, 2052, South Africa
T: +27(0)11 798 6000 / F: +27(0)11 798 6005
Email: johannesburg@rhdhv.com
www.rhdhv.co.za

verklein om slegs te fokus op die plaas Roodekopjes 67 HS, Bergvliet 65 HS (Gedeeltes 17 & 21) en Rietfontein 66HS (Gedeeltes 4 & 5). In die vorige ESS was die volgende plase ook ingesluit as deel van die studie area: Rietfontein 66HS (insluitende Klein Rietfontein 117HS); Japtrap 115HS; Palmietspruit 68HS; Tweedepoort 54HS; Koppieskraal 56HS; Bergvliet 65HS; Weiland 59HS en Strydkraal 53HS. Die 40 – 140 MW OCGT demonstrasie aanleg vorm ook nie deel van die huidige ESS nie.

KENNISGEWING VAN BESKIKBAARHEID VAN DIE VOORLOPIGE OMGEWINGS WERKS OMVANG STUDIE VERSLAG VIR PUBLIEKE HERSIENING

Alle B&GPs word hiermee in kennis gestel dat die voorlopige Omgewings Werks Omvang Studie Verslag (ESR) beskikbaar sal wees vir publieke kommentaar vanaf die **22ste Oktober 2012** tot **07 Januarie 2013**. Hierdie voorlopige dokument som al die hoof omgewings kwessies geïdentifiseer tot op datum, en sal beskikbaar wees vir besigtiging op die volgende plekke:

- Volksrust Publieke Biblioteek, H/v Joubert & Laingsnek Straat (Volksrust)
- Amersfoort Publieke Biblioteek, H/v Plein & Bree Straat (Amersfoort)
- UCG Myngedou Aanleg kantore, Majuba Colliery, Bergvliet, Amersfoort
- Kantoor van Royal HaskoningDHV, 78 Kalkoen Straat, Monument Park (Pretoria)
- Royal HaskoningDHV web-tuiste (<http://www.rhdhv.co.za/pages/services/environmental/current-projects.php>)

WIE KAN U KONTAK?

Royal HaskoningDHV is die aangestelde onafhanklike Omgewings Impak Praktisyn (EAP), wat die nodige omgewings impak assesserings en openbare deelname prosesse vir die projek sal behartig. Om te registreer as 'n Belanghebbende en Geëffekteerde Party (B&GP) en sodende meer informasie oor die projek te verkry, verskaf asseblief u naam, kontak besonderhede en belang in die projek op die aangehegte registrasie en kommentaar vorm en versend aan:

Sibongile Hlomuka
Royal HaskoningDHV
Posbus 867, Gallo Manor, 2052
Tel: 011 798 6000
Faks: 011 798 6010
Epos: sibongile.hlomuka@rhdhv.com

Die uwe,

Sibongile Hlomuka

GEÏNTIGREERDE OMGEWINGS IMPAK STUDIE EN WATER LISENSIE STUDIE VIR DIE ONDERGRONDSE STEENKOOI GASIFIKASIE PROJEK EN GEASSOSIEERDE INFRASTRUKTUUR TER STAWING VAN MEDE-ONTBRANDING VAN GAS BY DIE MAJUBA KRAGSTASIE, MPUMALANGA

DEA VERW NR: 14/12/16/3/3/3/61

AGTERGROND INFORMASIE DOKUMENT OKTOBER 2012

WAT BEHELS HIERDIE DOKUMENT?

Hierdie dokument se doel is om u, as Belanghebbende en/of Geaffekteerde Party (B&GP), te verskaf met informasie aangaande die geïntigreerde aansoek vir Omgewings Magtiging vir die Ondergrondse Steenkool Gasifikasie (UCG) Projek en alle geassosieerde infrastruktuur op Gedeeltes 1, 2, 3 en resterende gedeelte van die plaas Roodekopjes 67 HS, Gedeeltes 17 en 21 van die plaas Bergvliet 65HS en Gedeeltes 4 en 5 van die plaas Rietfontein 66HS in Mpumalanga Provinsie, asook die nodige omgewingsstudies wat onderneem gaan word (verwys na *Bylae A vir die Ligging Kaart van die studie area*). Enige persoon, maatskappy, autoriteit of ander entiteit wat direk of indirek aangeraak mag wees deur die voorgestelde aktiwiteite, kan registreer as 'n Belanghebbende of Geaffekteerde Party (B&GP).

Die dokument dui verder aan hoe u betrokke kan raak by die projek, informasie kan ontvang asook sake aan die lig te bring wat u bekommer en/of interesseer. Die openbaarmaking van informasie vorm die basis van die publieke deelname proses en bied u die geleentheid om aktief betrokke te raak in die projek vanaf die begin. Insette vanaf die B&GPs verseker dat alle potensiele omgewings kwessies oorweeg word gedurende die studie.

STUDIE AREA

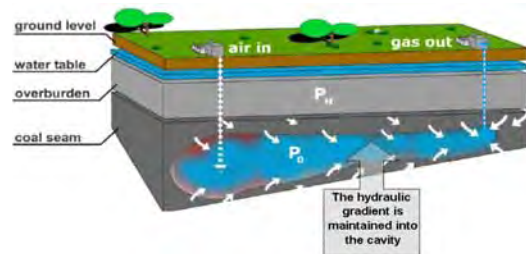
Die Ondergrondse Steenkool Gasifikasie (UCG) operasie sal plaasvind op Gedeeltes 1, 2, 3 en die resterende gedeelte van die plaas Roodekopjes 67HS (Eskom eiendom) geleë binne die Pixley ka Seme Plaaslike Munisipaliteit in Mpumalanga. Die totale omvang van die plaas is 2449 ha en dit word geantisepeer dat ongeveer 1450 ha gemyn sal word met die gebruik van die UCG tegnologie. Die aanleg is aangrensend die Majuba Kragstasie (verwys na die Ligging kaart aan die einde van hierdie dokument).

Geassosieerde infrastruktuur, soos 'n afval water behandelings werke en die aanleg kantore, is geleë op Gedeelte 21 van die plaas Bergvliet 65HS. Daarenbowe

sal 'n nuwe dienspad gebou word vanaf die aanleg kantore hierbo genoem tot by die UCG loods projek. Die pad span oor Gedeeltes 4 en 5 van die plaas Rietfontein 66HS. 'n 30 m serwituit is reeds geregistreer ten gunste van Eskom vir hierdie aangeleentheid.

PROJEK BESKRYWING

Ondergrondse Steenkool Gasifikasie (UCG) is 'n proses waardeur steenkool (280 – 300 m diep) omgesit word *in situ* in 'n vlbare gas wat gebruik kan word vir kragopwekking en dit is een van die nuwe skoon steenkool tegnologie opsies wat deur Eskom ondersoek word.



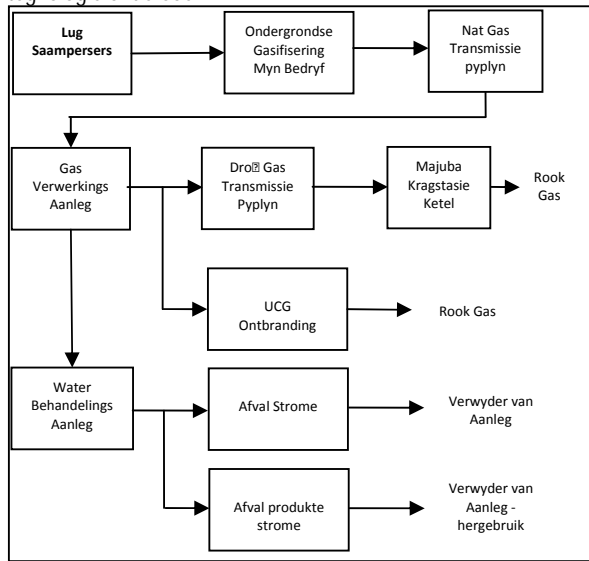
Figuur 1: Skematiese Voorstelling van die UCG Proses

Die lug word saamgepers en ingespuut in die ondergrondse gasifikasie reaktor, die reaktor gebruik die huidige steenkool soom se water vir die gasifikasie proses, die resultate is die gebruik en omsetting van die soom se steenkool in 'n sintetiese gas (syngas). Die gas word na die oppervlak gebring deur produksie gate; die gas word dan herlei na 'n gemeenskaplike verdeelpyp wat lei na 'n nat gas transmissie pyplyn, wat ook begelei word deur 'n 50mm kondensaat pyplyn wat gebruik word om die by-produk te versamel. Die nat gas word na die gas behandelings aanleg gevoer, sodra die vloeistof deel verwyder is, word die droë gas of na Majuba Kragstasie gestuur of dit word verbrand op die aanleg deur middel van 'n gas verbrander.

Die kondensaat wat versamel word gedurende die proses, word oorgeplaas na 'n proses water dam, waar dit behandel sal word tot dit 'n aanvaarbare kwaliteit is

wat gebruik kan word om of plaaslike besproeiing te ondersteun, her-ingespuit te word in die steenkool soom watertafel of gesuiwer word tot Majuba rou water kwaliteit vereistes.

Om tot die brandstof vereistes vir optimale kragopwekking by Majuba Kragstasie te voldoen, het Eskom die gebruik van sintetiese gas (15000 Nm³/hr) soos geproduseer deur die UCG proses as 'n aanvullende brandstof bron in die verbranders by die kragstasie. Die 15000 Nm³/hr aanleg sal opgeskaal word na 70000 Nm³/hr en gebasseer op die uitkoms van die 70000 Nm³/hr aanleg, mag Eskom die opsie van 'n kommersiële grootte krag aanleg gebasseer op die UCG tegnologie ondersoek.



Figuur 2: Blok vloei diagram vir die 70000 Nm³/hr loods aanleg

UCG het die potensiaal om steenkool neerslae te ontgin wat voorheen as onekonomies of onbekombaar beskou was as gevolg van die diepte, soom dikte, soom helling, soom breukvorming en verplasing, of ander myn en veiligheids oorwegings.

Die hoof komponente van die projek sluit in:

- Gasveld (bestaande uit die boor van eksplorasië en kontrole gate, gasifiseerder eenhede, gas pyplyne)
- Lug saampersers
- Gas Behandelings Aanleg insluitende verbrander
- Proses en rou water damme insluitende drinkbare water opbergings houers
- Afval water Behandelings werke
- Brandstof opbergings houers
- Toegangs paaie (nuwe dienspad en interne toegangs paaie)
- Aanleg Kantore
- Elektriese Infrastruktuur

PROJEK GESKIEDENIS

Eskom het die UCG aktiwiteite op die plaas Roodekopjes 67HS in January 2007 in werking gestel as deel van 'n geleidelike ontwikkeling en implimenterings plan (*Nuwe Orde Prospekterings Reg toegeken in 2005 (F/2005/03/11/0001) deur die Departement van Minerale en Energie*).

Gedurende die beplanningsproses, was die oorspronklike *modus operandi* om mede ontbranding by die Majuba Kragstasie met 15000 Nm³/hr van die UCG se syngas na te vors. Dit sou dan die Eskom ingenieurspan die kans gee om die karakter eienskappe van die gas te bepaal (m.a.w. kwaliteit, kwantiteit en stabiliteit) ten einde 'n 40 – 140 MW Oop Siklus Gas Turbine (OCGT) demonstrasie aanleg in werking te stel – hierdie was die onderwerp van 'n *aanvanklike omgewings impak studie* wat in 2009 aangegaan is onder die voorneme van die *Omgewings Impak studie Regulasies van 2006*. Hierdie demonstrasie aanleg sou die basis gewees het waarop besluite gemaak sou word vir 'n 2100 MW Saamgestelde Siklus Gas Turbine (CCGT) kommersiële kragstasie.

Vanuit die gas produksie dus ver, het die Eskom ingenieurspan tot die gevolgtrekking gekom dat die produksie van 15000 Nm³/hr van UCG se syngas nie voldoende is om te bepaal wat die gas se karakter eienskappe is met genoegsame akuraatheid om voort te gaan met die oprigting van die 40 – 140 MW demonstrasie aanleg nie. Hierdie komponent van die projek is dus verwyder.

Die studie area is ook verklein en die fokus is slegs op die plaas Roodekopjes 67HS en gedeeltes van Rietfontein 66HS en Bergvliet 65HS.

POTENSIELE OMGEWINGS IMPAKTE GEASSOSIEER MET DIE VOORGESTELDE PROJEK

Daar is vele potensiele omgewings impakte geassosieer wat met die projek geïdentifiseer kan word. As deel van die Omgewings Impak studie, sal hierdie potensiele impakte geassosieer word deur die volgende spesialis studies:

Spesialis Veld	Organisasie
Grondsoorte en Landbou Potensiaal	Terra Soil Science
Biodiversiteit	Bathusi Environmental Consulting
Vleilande	Royal HaskoningDHV
Visuele Impak	MetroGIS & Royal HaskoningDHV
Lug Kwaliteit	Royal HaskoningDHV
Erfenis	Johnny van Schalkwyk
Mikro-Ekonomiese	MasterQ Research

Assessering	
Sosiaal	<i>MasterQ Research</i>
Geologiese Eweknie Hersiening	<i>Mine Geology Services</i>
Grondwater Eweknie Hersiening	<i>Reinhard Meyer</i>

OMGEWINGSSTUDIES

'n Omgewings Impak Studie (EIA) is 'n effektiewe beplannings en besluitmakings instrument wat toelaat vir die identifikasie van potensiele omgewings nagevolge van voorgestelde projekte en die bestuur daarvan deur die beplannings proses.

Ten einde die nodige omgewings goedkeuring van die Departement van Omgewings Sake (DEA) te verkry moet 'n Werks Omvang Studie en Omgewings Impak Assessering Studie onderneem word in terme van Goewerments Kennisgewing Nr. R. 543, R.544, R.545 en R.546 van die EIA Regulations (2010) asook Goewerments Kennisgewing 718 van 2009 van die Nasionale Omgewings Bestuurs: Afval stowwe Wet, 2008.

EIA Regulasies (2010)

Gelysde Kennisgewings	Aktiwiteite
Gelysde Kennisgewing 1, GN. R.544	11, 12, 13, 18, 20, 22, 23.ii, 28, 48, 49, 56
Gelysde Kennisgewing 2, GN. R.545	4, 5, 6, 15, 19, 20, 22, 26
Gelysde Kennisgewing 3, GN. R.546	4, 10, 13, 14, 16, 19, 23, 24, 26

GN R.718 van die NEM: Afval stowwe Wet, 2008

GN R.718	Aktiwiteite
Kategorie A	11, 12, 16 & 19
Kategorie B	2 & 7

GEINTIGREERDE WATER GEBRUIK LISENSIE AANSOEK (IWULA)

Die IWULA proses sal gedoen word onder leiding van Artikel 40 van die Nasionale Water Wet, 1998 (Wet Nr 36 van 1998).

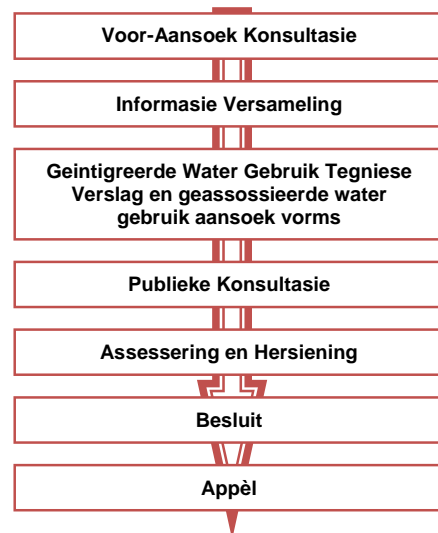
Die voorgestelde aktiwiteite aangaande die UCG proses asook infrastruktuur (proses en rou water damme, pyplyne, toegang paaie ens.), vereis verskeie water verbruiks toestemmings van die bevoegde gesag (Departement van Water en Omgewings Sake).

Die volgende gebruike word aangeraak:

Relevante water gebruik	Toepaslikheid
Artikel 21 (a)	Indirekte onttrekking van water deur die gasifikasie proses
Artikel 21 (b)	Proses en rou water damme

Artikel 21 (c)	Enige werke binne 'n waterstroom vir die konstruksie van infrastruktuur aangaande die UCG b.v. pyplyne (water en gas), paaie (hoof en toegangs)
Artikel 21 (e)	Die behandeling van afvalwater asook die moontlikheid van ondersteuning van plaaslike besproeiings aktiwiteite
Artikel 21 (f)	Afvalwater Behandelings Aanleg sisteem
Artikel 21 (g)	Potensiele deursypeling, lekkasies, besoedeling van die myn operasies asook vanaf die proses en rou water damme
Artikel 21 (h)	Hou verband met die gasifikasie proses
Artikel 21 (i)	Enige werke binne 'n waterstroom vir die konstruksie van infrastruktuur aangaande die UCG b.v. pyplyne (water en gas), paaie (hoof en toegangs)
Artikel 21 (j)	Water geproduseer gedurende die gasifikasie proses

Die IWULA proses wat gevolg word vir die projek is in Figuur 3 hieronder uiteengesit.



Figuur 3: Geintigreerde Water Gebruik Lisensie Aansoek proses

ROYAL HASKONINGDHV AS ONAFHANKLIKE OMGEWINGS IMPAK PRAKTISYN

"Eskom Holdings (SOC) Ltd." het Royal HaskoningDHV, as 'n onafhanklike Omgewings Impak Assessering Praktisyn (EAP) aangestel om die omgewingsstudies te identifiseer en al die potensiele omgewings impakte geassosieer met die voorgestelde projek te assesser. As deel van hierdie omgewingsstudies, sal al die B&GPs aktief deel wees deur 'n openbare deelname proses. Die projek sal ook bestaan uit twee hoof fases:

- 1) Fase I: Omgewings Werks Omvang Studie Verslag en Plan vir die Omgewings Impak Studies; en

2) Fase II: Omgewings Impak Studie en Omgewings Bestuurs Program (OBPr)

Hierdie twee fases sal saam bydra in die goedkeuring of afkeuring van die projek, m.a.w. 'n positiewe of negatiewe Omgewings Magtiging.



Figuur 4: Projek tydlyn

WAT IS U ROL?

Indien U uself ag as 'n B&GP vir die voorgestelde projek, moedig ons u aan om gebruik te maak van die geleentheid wat u gebied word by die openbare deelname proses om betrokke te raak in die proses en u kommentaar, navrae of kwessies te lig wat u raak en/of interesseer en waaroor u meer informasie verlang.

Deur die aangehegte registrasie vorm te voltooi en in te dien, sal ons verseker dat u geregistreer word as 'n B&GP vir die projek en dat u kwessies, kommentaar of navrae in ag gegee word. Ons sal ook verseker dat u toekomstige informasie aangaande die projek ontvang asook die beskikbaarheid van die voorlopige en finale Omgewings Verslae (n.l. Omgewings Werks Omvang Studie Verslag en EIR) vir kommentaar.

KOMMENTAAR EN NAVRAE

Stuur asseblief alle kommentaar, navrae of kwessies na:

Sibongile Hlomuka
Royal HaskoningDHV
Posbus 867, Gallo Manor, 2052
Tel: 011 798 6000
Faks: 011 798 6010
Epos: sibongile.hlomuka@rhdhv.com

Bylae A: Ligging
Kaart



- LEGEND:
- Proposed New Service Road
 - ▤ Rietfontein 66 HS
 - ▣ Bergvliet 65 HS
 - ▬ Roodekopjes 67 HS
 - Hydrology - Dams
 - Hydrology - Rivers

PROJECTION:
Transverse Mercator
WGS LO 29

SCALE: 1:50 000
0 0.5 1 2 km

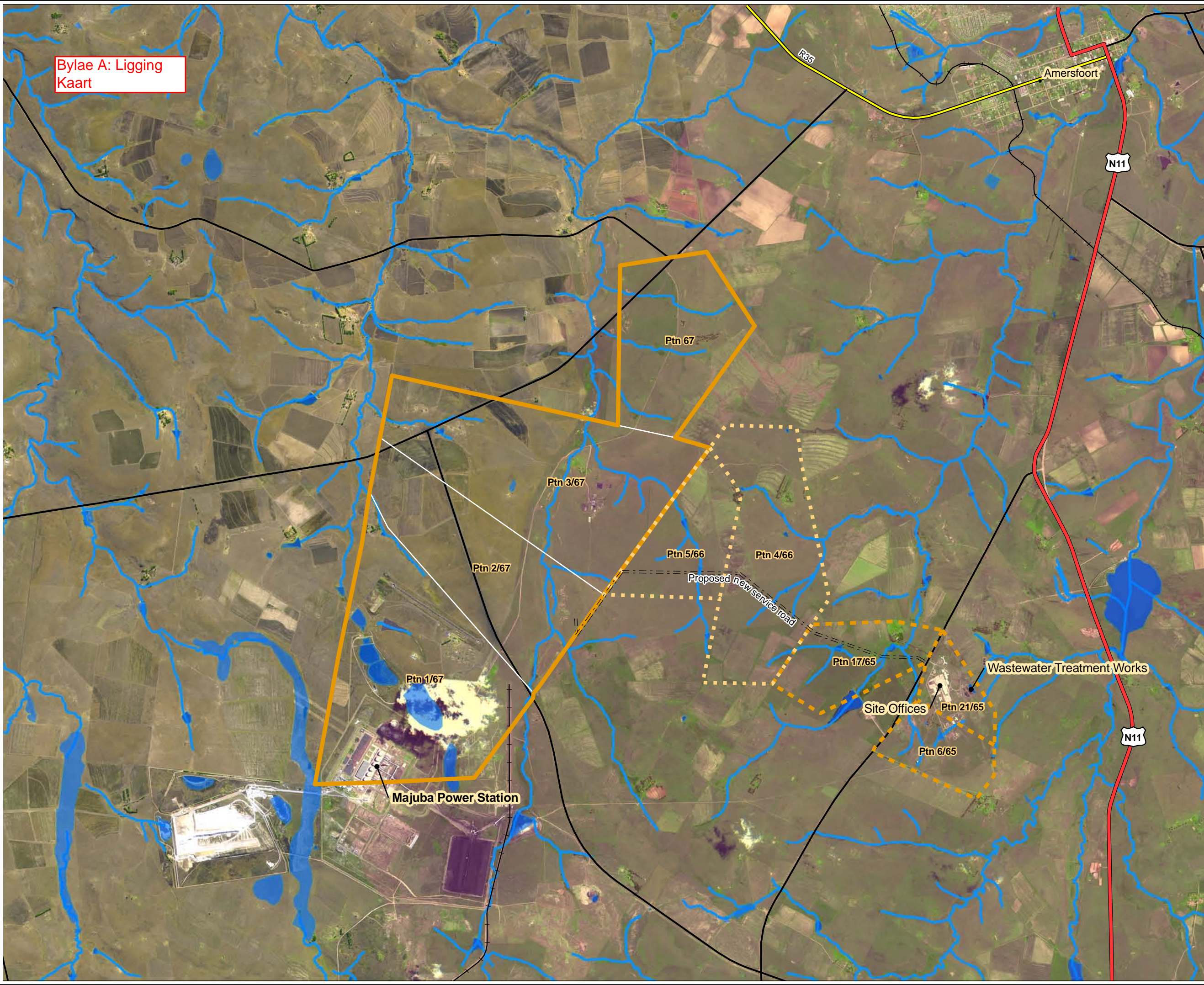
DATA:

PREPARED BY:
 Royal HaskoningDHV
Enhancing Society Together

CLIENT:
 Eskom

TITLE:
**LOCALITY MAP:
UNDERGROUND COAL GASIFICATION
PROJECT AND ASSOCIATED INFRASTRUCTURE
IN SUPPORT OF CO-FIRING OF GAS AT
THE MAJUBA POWER STATION,
AMERSFOORT, MPUMALANGA**

Project	Date	September 2012
Data	Map	
Type:	No:	



**GEÏNTIGREERDE OMGEWINGS IMPAK STUDIE EN WATER LISENSIE STUDIE VIR DIE ONDERGRONDSE
STEENKOOL GASIFIKASIE PROJEK EN GEASSOSIEERDE INFRASTRUKTUUR TER STAWING VAN MEDE-
ONTBRANDING VAN GAS BY DIE MAJUBA KRAGSTASIE, MPUMALANGA**

DEA VERW NR: 14/12/16/3/3/3/61

REGISTRASIE EN KOMMENTAAR VORM

VOLTOOI ASSEBLIEF HIERDIE VORM EN STUUR TERUG AAN:

Sibongile Hlomuka
Royal HaskoningDHV
Posbus 867, Gallo Manor
2052

Telefoon: 011 798 6000
Faks: 011 798 6010
E-pos: sibongile.hlomuka@rhdhv.com

PERSOONLIKE BESONDERHEDE:

Titel: Voornaam:

Van:

E-pos:

Telefoon: Faks:

Organisasie (indien van toepassing):

Kapasiteit (b.v. direkteur, lid, ens):

Fisiese Adres:

Dorp: Kode:

Posadres:

Dorp: Kode:

1. Wat is u hoof area van belangstelling aangaande die voorgestelde projek?

.....
.....
.....
.....
.....
.....

2. Het u enige punte van kommer aangaande die voorgestelde projek?

Indie "Ja", lys asseblief hieronder - puntsgewys:

.....
.....
.....
.....
.....

3. Is u bewus van enige ander moontlike belanghebbende of geaffekteerde partye wat u voel mee gekonsulteer moet word aangaande die voorgestelde projek?

Indien "Ja", lys asseblief hulle name en kontakbesonderhede hieronder

.....

.....

.....

.....

.....

.....

.....

.....

.....


.....

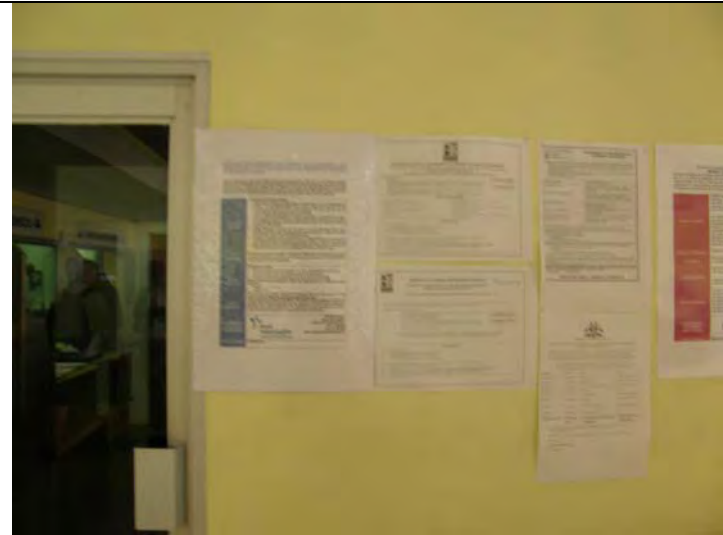
.Voeg ekstra bladsye by indien nodig

SITE NOTICES

NOTICE OF INTEGRATED ENVIRONMENTAL IMPACT ASSESSMENT AND WASTE MANAGEMENT LICENSE APPLICATION FOR THE UNDERGROUND COAL GASIFICATION PROJECT AND ADDITIONAL INFRASTRUCTURE IN SUPPORT OF CO-FIRING OF GAS AT THE MAJUBA POWER STATION, AMERSFOORT AREA, MPUMALANGA PROVINCE (DEA REF 14/12/16/3/3/3/61)

Notice is hereby given in terms of the National Environmental Management Act, 1998 (Act No 107 of 1998) as amended, Environmental Impact Regulations (2010) as well as the National Environmental Management: Waste Act, 2008 (Act No 59 of 2008) Government Notice 718, that Eskom Holdings SOC Ltd (Eskom) has submitted an integrated application for Environmental Authorisation and Waste Management License to the Department of Environmental Affairs (DEA). Eskom intends to undertake a Scoping and EIA study and submit Scoping and Environmental Impact Reports to DEA in support of the proposed project.

<p>PROJECT NATURE</p>	<p>The proposed project entails the following:</p> <ul style="list-style-type: none"> • Implementation of underground coal gasification (UCG) technology on the farm Roodekopjes 67HS (Portions 1, 2, 3 and remaining extent). UCG is a process whereby coal is converted <i>in situ</i> into combustible gas that can be used for power generation. The study area falls within the administrative boundaries of Pixley ka Seme Local Municipality. • In order to meet the fuel requirements for optimal power generation at the Majuba Power Station, Eskom proposes the use of synthetic gas or syngas (15000 Nm³/hr) produced by the UCG process as a supplementary fuel source within the boilers at the power station. The 15000 Nm³/hr plant will be scaled up to 70000 Nm³/hr. • Ancillary infrastructure associated with the project on the farm Roodekopjes 67HS include: production and injection wells, monitoring boreholes, gas treatment plant, process and raw water dams, site offices, access roads and electrical infrastructure. • In addition, a wastewater treatment works on Portion 21 of Bergvliet 65HS and a new service road to be constructed between the entrance to the site office complex on Portion 17 of farm Bergvliet 65HS and Portions 4 and 5 of the farm Rietfontein 66HS before linking up to the UCG site on the borders of Portions 2 and 3 of the farm Roodekopjes 67HS will be included in this study.
<p>LOCATION</p>	<p>The UCG plant operations is located on Roodekopjes 67HS (Portion 1,2,3 and remaining extent), associated infrastructure are location on Roodekopjes as well as Portion 21 of Bergvliet 65HS and Portions 4 and 5 of the farm Rietfontein 66HS.</p>
<p>LISTED ACTIVITIES</p>	<p>EIA Regulations (2010):</p> <ul style="list-style-type: none"> • Government Notice R.544 (Listing Notice 1): 11, 12, 13, 18, 20, 22, 23ii, 28, 48, 49, 56 • Government Notice R.545 (Listing Notice 2): 4, 5, 6, 15, 19, 20, 22, 26 • Government Notice R.546 (Listing Notice 3): 4, 10, 13, 14, 16, 19, 23, 24, 26 <p>National Environmental Management: Waste Act, 2008 (Act No 59 of 2008) Government Notice 718:</p> <ul style="list-style-type: none"> • Category A: 11, 12, 16 & 19 • Category B: 2 & 7 <p>Eskom are also in the process of applying for an Integrated Water Use License (IWULA) from the Department of Water Affairs for the water uses associated with the project.</p>
<p>HOW TO REGISTER</p>	<p>You can register as an Interested and Affected Party (I&AP) or request additional information, by contacting Royal HaskoningDHV which has been appointed as the Environmental Assessment Practitioner for the project. I&APs are further requested to provide their name and surname, contact information and interest in the project (contact details provided below).</p>
<p>ENVIRONMENTAL ASSESSMENT PRACTITIONER</p>	<div style="display: flex; align-items: center;">  <div style="margin-left: 10px;"> <p>Royal HaskoningDHV Enhancing Society Together</p> </div> <div style="margin-left: 20px; text-align: right;"> <p>Sibongile Hlomuka Royal HaskoningDHV PO Box 867, Gallo Manor, 2052 Tel: 011 798 6000 Fax: 011 798 6010 Email: sibongile.hlomuka@rhdhv.com</p> </div> </div>
<p>DATE OF NOTICE</p>	<p>OCTOBER 2012</p>



Offices of the Pixley ka Seme Municipality



Offices of the Amersfoort Municipality



Offices of the Amersfoort Municipality



Security check-in office at the Majuba Power Station



UCG Pilot Plant



Entrance to the Old Mine (Bergvliet Colliery)

*ADVERTISEMENT (TO BE PLACED IN
THE VOLKSRUST RECORDER AND CITY
PRESS)*

NOTICE OF INTEGRATED ENVIRONMENTAL IMPACT ASSESSMENT AND WASTE MANAGEMENT LICENSE APPLICATION FOR THE UNDERGROUND COAL GASIFICATION PROJECT AND ADDITIONAL INFRASTRUCTURE IN SUPPORT OF CO-FIRING OF GAS AT THE MAJUBA POWER STATION, AMERSFOORT AREA, MPUMALANGA PROVINCE

(DEA REF: 14/12/16/3/3/61)

Notice is hereby given in terms of the National Environmental Management Act, 1998 (Act No 107 of 1998) as amended, Environmental Impact Regulations (2010) as well as the National Environmental Management: Waste Act, 2008 (Act No 59 of 2008) that Eskom Holdings SOC Ltd ('Eskom') has submitted an integrated application for Environmental Authorisation and Waste Management License to the Department of Environmental Affairs (DEA). Eskom intends to undertake a Scoping and EIA study and submit Scoping and Environmental Impact Reports to DEA in support of the proposed project.

The proposed project entails the following:

- Implementation of underground coal gasification (UCG) technology on the farm Roodekopjes 67HS (Portions 1, 2, 3 and remaining extent). UCG is a process whereby coal is converted in situ into combustible gas that can be used for power generation. The study area falls within the administrative boundaries of Pixley ka Seme Local Municipality
- In order to meet the fuel requirements for optimal power generation at the Majuba Power Station, Eskom proposes the use of synthetic gas or syngas (15000 Nm³/hr) produced by the UCG process as a supplementary fuel source within the boilers at the power station. The 15000 Nm³/hr plant will be scaled up to 70000 Nm³/hr
- Ancillary infrastructure associated with the project on the farm Roodekopjes 67HS include: production and injection wells, monitoring boreholes, gas treatment plant, process and raw water dams, site offices, access roads and electrical infrastructure
- In addition, a wastewater treatment works on Portion 21 of Bergvliet 65HS and a new service road to be constructed between the entrance to the site office complex on Portion 17 of farm Bergvliet 65HS and Portions 4 and 5 of the farm Rietfontein 66HS before linking up to the UCG site on the borders of Portions 2 and 3 of the farm Roodekopjes 67HS will be included in this study
- Eskom are also in the process of applying for an Integrated Water Use License (IWULA) from the Department of Water Affairs for the water uses associated with the project.

NOTICE OF AVAILABILITY OF THE DRAFT ENVIRONMENTAL SCOPING REPORT FOR PUBLIC REVIEW

All I&APs are hereby notified that the draft Environmental Scoping Report (ESR) will be available for public comment from 22 October 2012 to 07 January 2013. **The draft ESR will summarise key environmental issues identified to date and will be available at the following places:**

- Volksrust Public Library, Cnr Joubert & Laingsnek Street (Volksrust)
- Amersfoort Public Library, Cnr Plein & Bree Street (Amersfoort)
- UCG Mine Site Offices, Majuba Colliery, Bergvliet, Amersfoort
- Office of Royal HaskoningDHV, 78 Kalkoen Street, Monument Park (Pretoria)
- Royal HaskoningDHV website (<http://www.rhdhv.co.za/pages/services/environmental/current-projects.php>)

WHO SHOULD YOU CONTACT?

Royal HaskoningDHV is the appointed independent Environmental Assessment Practitioner (EAP), undertaking the required environmental impact assessment and public participation process for the project. To register as an Interested and Affected Party (I&AP) and to obtain more details about the project, please submit your name, contact information and interest in the project to:

Sibongile Hlomuka of RHDHV

PO Box 867,
GALLO MANOR
2052

Tel.: (011) 798 6000

Fax: (011) 798 6010

Email: sibongile.hlomuka@rhdhv.com

PROOF OF NOTIFICATION

ORGANS OF STATE

Reddy, Prashika

From: Govender, Seshni
Sent: 09 October 2012 02:19 PM
To: IvanR@nda.agric.za; Aubrey.Tshivhandekano@dmr.gov.za; vaswegj@dwa.gov.za; MusekeneM@dwa.gov.za; vermaakc@dwaf.gov.za; Meulenbeldp@dwaf.gov.za; mokgwabonem@dwa.gov.za; careens@social.mpu.gov.za; reuben.sibuyi@labour.gov.za; oupa@pixleykaseme.co.za; Leon@pixleykaseme.co.za; dcs@pixleykaseme.co.za; dan.hlanyane@gsibande.gov.za; gtshivhalavhala@mp.sahra.org.za; SPienaar@mpg.gov.za; Ndalisa.Jele@dpe.gov.za; apohl@mpg.gov.za; nmesatywa@thedti.gov.za; GXaba@mpg.gov.za; ronniem@social.mpu.gov.za
Cc: Reddy, Prashika
Subject: ENVIRONMENTAL IMPACT ASSESSMENT AND WASTE MANAGEMENT LICENSE APPLICATION FOR THE UNDERGROUND COAL GASIFICATION PROJECT AND ASSOCIATED INFRASTRUCTURE IN SUPPORT OF CO-FIRING OF GAS AT THE MAJUBA POWER STATION, AMERSFOORT, MPUMALANGA
Attachments: Letters to I&APs_08_10_12.pdf; Letters to IAPs_08_10_12_afr.pdf; BID-UCG Draft_07_10_12_Final_Afr.pdf; BID-UCG_05_10_12_Final_Eng.pdf; Comment Reg Form_01_10_12_afr_Final.pdf; Comment & Reg Form_01_10_12_eng_Final.pdf



www.rhdhv.co.za

09 October 2012

Dear Interested and Affected Parties (I&APs)

ENVIRONMENTAL IMPACT ASSESSMENT AND WASTE MANAGEMENT LICENSE APPLICATION FOR THE UNDERGROUND COAL GASIFICATION PROJECT AND ASSOCIATED INFRASTRUCTURE IN SUPPORT OF CO-FIRING OF GAS AT THE MAJUBA POWER STATION, AMERSFOORT, MPUMALANGA

Notice is hereby given in terms of the National Environmental Management Act, 1998 (Act No 107 of 1998) as amended, Environmental Impact Regulations (2010) as well as the National Environmental Management: Waste Act, 2008 (Act No 59 of 2008) that Eskom Holdings SOC Ltd ('Eskom') has submitted an integrated application for Environmental Authorisation and Waste Management License to the Department of Environmental Affairs (DEA). Eskom intends to undertake a Scoping and EIA study and submit Scoping and Environmental Impact Reports to DEA in support of the proposed project.

The proposed project entails the following:

- Implementation of underground coal gasification (UCG) technology on the farm Roodekopjes 67HS (Portions 1, 2, 3 and remaining extent). UCG is a process whereby coal is converted *in situ* into combustible gas that can be used for power generation. The study area falls within the administrative boundaries of Pixley ka Seme Local Municipality.

- In order to meet the fuel requirements for optimal power generation at the Majuba Power Station, Eskom proposes the use of synthetic gas or syngas (15000 Nm³/hr) produced by the UCG process as a supplementary fuel source within the boilers at the power station. The 15000 Nm³/hr plant will be scaled up to 70000 Nm³/hr.
- Ancillary infrastructure associated with the project on the farm Roodekopjes 67HS include: production and injection wells, monitoring boreholes, gas treatment plant, process and raw water dams, site offices, access roads and electrical infrastructure.
- In addition, a wastewater treatment works on Portion 21 of Bergvliet 65HS and a new service road to be constructed between the entrance to the site office complex on Portion 17 of farm Bergvliet 65HS and Portions 4 and 5 of the farm Rietfontein 66HS before linking up to the UCG site on the borders of Portions 2 and 3 of the farm Roodekopjes 67HS will be included in this study.
- Eskom are also in the process of applying for an Integrated Water Use License (IWULA) from the Department of Water Affairs for the water uses associated with the project.

All I&APs are hereby notified that the draft Environmental Scoping Report (ESR) will be available for public comment from 22 October 2012 to 07 January 2013.

WHO SHOULD YOU CONTACT?

Royal HaskoningDHV is the appointed independent Environmental Assessment Practitioner (EAP), undertaking the required environmental impact assessment and public participation process for the project. To register as an Interested and Affected Party (I&AP) and to obtain more details about the project, please submit your name, contact information and interest in the project on the attached registration and comment form to:

Sibongile Hlomuka
Royal HaskoningDHV
PO Box 867, Gallo Manor, 2052
Tel: 011 798 6000
Fax: 011 798 6010
Email: sibongile.hlomuka@rhdhv.com

Yours sincerely,

Sibongile Hlomuka

Kalele, Phyllis

From: Govender, Seshni
Sent: Tuesday, October 09, 2012 2:48 PM
To: nmachete@mp.sahra.org.za
Cc: Reddy, Prashika
Subject: FW: ENVIRONMENTAL IMPACT ASSESSMENT AND WASTE MANAGEMENT LICENSE APPLICATION FOR THE UNDERGROUND COAL GASIFICATION PROJECT AND ASSOCIATED INFRASTRUCTURE IN SUPPORT OF CO-FIRING OF GAS AT THE MAJUBA POWER STATION, AMERSFOORT, MPUMALANGA

Attachments: Letters to I&APs_08_10_12.pdf; Letters to IAPs_08_10_12_afr.pdf; BID-UCG Draft_07_10_12_Final_Afr.pdf; BID-UCG_05_10_12_Final_Eng.pdf; Comment Reg Form_01_10_12_afr_Final.pdf; Comment & Reg Form_01_10_12_eng_Final.pdf



www.rhdhv.co.za

09 October 2012

Dear Interested and Affected Parties (I&APs)

ENVIRONMENTAL IMPACT ASSESSMENT AND WASTE MANAGEMENT LICENSE APPLICATION FOR THE UNDERGROUND COAL GASIFICATION PROJECT AND ASSOCIATED INFRASTRUCTURE IN SUPPORT OF CO-FIRING OF GAS AT THE MAJUBA POWER STATION, AMERSFOORT, MPUMALANGA

Notice is hereby given in terms of the National Environmental Management Act, 1998 (Act No 107 of 1998) as amended, Environmental Impact Regulations (2010) as well as the National Environmental Management: Waste Act, 2008 (Act No 59 of 2008) that Eskom Holdings SOC Ltd ('Eskom') has submitted an integrated application for Environmental Authorisation and Waste Management License to the Department of Environmental Affairs (DEA). Eskom intends to undertake a Scoping and EIA study and submit Scoping and Environmental Impact Reports to DEA in support of the proposed project.

The proposed project entails the following:

- Implementation of underground coal gasification (UCG) technology on the farm Roodekopjes 67HS (Portions 1, 2, 3 and remaining extent). UCG is a process whereby coal is converted *in situ* into combustible gas that can be used for power generation. The study area falls within the administrative boundaries of Pixley ka Seme Local Municipality.
- In order to meet the fuel requirements for optimal power generation at the Majuba Power Station, Eskom proposes the use of synthetic gas or syngas (15000 Nm³/hr) produced by the UCG process as a supplementary fuel source within the boilers at the power station. The 15000 Nm³/hr plant will be scaled up to 70000 Nm³/hr.
- Ancillary infrastructure associated with the project on the farm Roodekopjes 67HS include: production and injection wells, monitoring boreholes, gas treatment plant, process and raw water dams, site offices, access roads and electrical infrastructure.
- In addition, a wastewater treatment works on Portion 21 of Bergvliet 65HS and a new service road to be constructed between the entrance to the site office complex on Portion 17 of farm Bergvliet 65HS and Portions 4 and 5 of the farm Rietfontein 66HS before linking up to the UCG site on the borders of Portions 2 and 3 of the farm Roodekopjes 67HS will be included in this study.

- Eskom are also in the process of applying for an Integrated Water Use License (IWULA) from the Department of Water Affairs for the water uses associated with the project.

All I&APs are hereby notified that the draft Environmental Scoping Report (ESR) will be available for public comment from 22 October 2012 to 07 January 2013.

WHO SHOULD YOU CONTACT?

Royal HaskoningDHV is the appointed independent Environmental Assessment Practitioner (EAP), undertaking the required environmental impact assessment and public participation process for the project. To register as an Interested and Affected Party (I&AP) and to obtain more details about the project, please submit your name, contact information and interest in the project on the attached registration and comment form to:

Sibongile Hlomuka
Royal HaskoningDHV
PO Box 867, Gallo Manor, 2052
Tel: 011 798 6000
Fax: 011 798 6010
Email: sibongile.hlomuka@rhdhv.com

Yours sincerely,

Sibongile Hlomuka

Kalele, Phyllis

From: Govender, Seshni
Sent: Wednesday, October 10, 2012 3:05 PM
To: SURGEON@environ1.agric.za; BEMndawe@mpg.gov.za
Cc: Reddy, Prashika
Subject: FW: ENVIRONMENTAL IMPACT ASSESSMENT AND WASTE MANAGEMENT LICENSE APPLICATION FOR THE UNDERGROUND COAL GASIFICATION PROJECT AND ASSOCIATED INFRASTRUCTURE IN SUPPORT OF CO-FIRING OF GAS AT THE MAJUBA POWER STATION, AMERSFOORT, MPUMALANGA
Attachments: Letters to I&APs_08_10_12.pdf; BID-UCG_05_10_12_Final_Eng.pdf; Comment & Reg Form_01_10_12_eng_Final.pdf



www.rhdhv.co.za

09 October 2012

Dear Interested and Affected Parties (I&APs)

ENVIRONMENTAL IMPACT ASSESSMENT AND WASTE MANAGEMENT LICENSE APPLICATION FOR THE UNDERGROUND COAL GASIFICATION PROJECT AND ASSOCIATED INFRASTRUCTURE IN SUPPORT OF CO-FIRING OF GAS AT THE MAJUBA POWER STATION, AMERSFOORT, MPUMALANGA

Notice is hereby given in terms of the National Environmental Management Act, 1998 (Act No 107 of 1998) as amended, Environmental Impact Regulations (2010) as well as the National Environmental Management: Waste Act, 2008 (Act No 59 of 2008) that Eskom Holdings SOC Ltd ('Eskom') has submitted an integrated application for Environmental Authorisation and Waste Management License to the Department of Environmental Affairs (DEA). Eskom intends to undertake a Scoping and EIA study and submit Scoping and Environmental Impact Reports to DEA in support of the proposed project.

The proposed project entails the following:

- Implementation of underground coal gasification (UCG) technology on the farm Roodekopjes 67HS (Portions 1, 2, 3 and remaining extent). UCG is a process whereby coal is converted *in situ* into combustible gas that can be used for power generation. The study area falls within the administrative boundaries of Pixley ka Seme Local Municipality.
- In order to meet the fuel requirements for optimal power generation at the Majuba Power Station, Eskom proposes the use of synthetic gas or syngas (15000 Nm³/hr) produced by the UCG process as a supplementary fuel source within the boilers at the power station. The 15000 Nm³/hr plant will be scaled up to 70000 Nm³/hr.
- Ancillary infrastructure associated with the project on the farm Roodekopjes 67HS include: production and injection wells, monitoring boreholes, gas treatment plant, process and raw water dams, site offices, access roads and electrical infrastructure.
- In addition, a wastewater treatment works on Portion 21 of Bergvliet 65HS and a new service road to be constructed between the entrance to the site office complex on Portion 17 of farm Bergvliet 65HS and Portions 4 and 5 of the farm Rietfontein 66HS before linking up to the UCG site on the borders of Portions 2 and 3 of the farm Roodekopjes 67HS will be included in this study.

- Eskom are also in the process of applying for an Integrated Water Use License (IWULA) from the Department of Water Affairs for the water uses associated with the project.

All I&APs are hereby notified that the draft Environmental Scoping Report (ESR) will be available for public comment from 22 October 2012 to 07 January 2013.

WHO SHOULD YOU CONTACT?

Royal HaskoningDHV is the appointed independent Environmental Assessment Practitioner (EAP), undertaking the required environmental impact assessment and public participation process for the project. To register as an Interested and Affected Party (I&AP) and to obtain more details about the project, please submit your name, contact information and interest in the project on the attached registration and comment form to:

Sibongile Hlomuka
Royal HaskoningDHV
PO Box 867, Gallo Manor, 2052
Tel: 011 798 6000
Fax: 011 798 6010
Email: sibongile.hlomuka@rhdhv.com

Yours sincerely,

Sibongile Hlomuka

ADJACENT LANDOWNERS

08 Oktober 2012

DEA Verwysing: 14/12/16/3/3/61
Ons Verwysing: E02.JNB.000308

Geagte Belanghebbende en Geaffekteerde Party (B&GP)

OMGEWINGS IMPAK STUDIE EN AFVAL KONTROLE LISENSIE AANSOEK VIR DIE ONDERGRONDSE STEENKOOLO GASIFIKASIE PROJEK EN GEASSOSIEERDE INFRASTRUKTUUR TER STAWING VAN MEDE-ONTBRANDING VAN GAS BY DIE MAJUBA KRAGSTASIE, AMERSFOORT, MPUMALANGA

Hiermee word u kennis gegee in terme van die Nasionale Omgewings Bestuur Wet, 1998 (Wet Nr. 107 van 1998) soos gewysig, Omgewings Impak Regulasies (2010) asook die Nasionale Omgewings Bestuur: Afval Stowwe Wet, 2008 (Act Nr. 59 van 2008) that Eskom Holdings SOC Ltd ("Eskom") 'n geïntegreerde aansoek vir Omgewings Magtiging en Afval Stowwe Bestuurs Lisensie ingedien het by die Departement van Omgewing Sake (DEA). Eskom is van voorneme om 'n Omgewings Werks Omvang Studie en Omgewings Impak Studie te onderneem en hierdie verslae by die DEA in te dien ter ondersteuning van die voorgestelde projek.

Die voorgestelde projek behels die volgende:

- Implementering van die ondergrondse steenkool gasifikasie (UCG) tegnologie op die plaas Roodekopjes 67 HS (Gedeeltes 1, 2, 3 en resterende gedeelte). UCG is 'n proses waardeur die steenkool omgesit word *in situ* in 'n vlambare gas wat gebruik kan word vir kragopwekking. Die studie area is geleë in die administratiewe grense van Pixley ka Seme Plaaslike Munisipaliteit.
- Ten einde die brandstof vereistes vir optimale kragopwekking by Majuba Kragstasie te bereik, het Eskom voorgestel dat die sintetiese gas (15000 Nm³/hr) soos geproduseer deur die UCG proses as 'n aanvullende brandstof bron in die verbranders van die kragstasie gebruik word. Die 15000 Nm³/hr aanleg sal opgegradeer word na 70000 Nm³/hr.
- Geassosieerde infrastruktuur van die projek op die plaas Roodekopjes 67 HS sluit in: produksie en inspuittings gate, kontrole gate, gas behandelings aanleg, proses en rou water damme, aanleg kantore, toegangspaaie en elektriese infrastruktuur.
- Aanvullend hiertoe is 'n afval water behandelings werke op Gedeelte 21 van die plaas Bergvliet 65 HS en 'n nuwe dienspad wat gebou gaan word tussen die ingang van die kantoor gebou op Gedeelte 17 van die plaas Bergvliet 65 HS en Gedeeltes 4 en 5 van die plaas Rietfontein 66 HS alvorens die UCG aanleg op die grense van Gedeeltes 2 en 3 van die plaas Roodekopjes 67 HS ingesluit gaan word in hierdie studie.
- Eskom is ook in die proses om aansoek te doen vir 'n Geïntegreerde Water Gebruik Lisensie (IWULA) vanaf die Departement van Waterwese vir die water gebruike geassosieer met die projek.

Verwys asseblief na die aangehegte Agtergrond Informasie Dokument (BID) vir meer informasie aangaande die projek.

Projek Agtergrond:

'n Omgewings Werks Omvang Studie (ESS) is in 2009 begin vir die UCG loods projek en geassosieerde infrastruktuur, insluitende die 40 – 140MW OCGT demonstrasie aanleg en gas behandelings anleg (DEA Ref 12/12/20/1617). Die omgewings impakte geassosieer met die projek vereis 'n verdere ondersoek in terme van die EIA Regulasies (2006) gepubliseer in Goewernments Kennisgewing Nr. R. 385 tot Nr. R. 387 soos gelees saam Artikel 24 (5) van die Nasionale Omgewings Bestuurs Wet – NEMA (Wet Nr 107 van 1998) – soos gewysig. Die finale Omgewings Werks Omvang Studie vir die projek was aanvaar deur die Departement van Omgewing Sake (DEA) in Maart 2010.

As gevolg van die navorsing en ontwikkeling (R&D) natuur van die projek, het in diepte ingenieurs informasie / ontwerp die proses verlaag in terme van die EIA proses, wat gelei het na tydverskil tussen die ESS en die EIA studies. Die aansoeker (Eskom) was ingelig deur die DEA om 'n nuwe EIA studie te begin onder die EIA Regulasies van 2010. Die projek studie area het intussen ook



SSI Engineers and Environmental Consultants (Pty) Ltd
trading as Royal HaskoningDHV

Reg No. 1966/001916/07

PO Box 867, Gallo Manor, 2052, South Africa

T: +27(0)11 798 6000 / F: +27(0)11 798 6005

Email: johannesburg@rhdhv.com

www.rhdhv.co.za

verklein om slegs te fokus op die plaas Roodekopjes 67 HS, Bergvliet 65 HS (Gedeeltes 17 & 21) en Rietfontein 66HS (Gedeeltes 4 & 5). In die vorige ESS was die volgende plase ook ingesluit as deel van die studie area: Rietfontein 66HS (insluitende Klein Rietfontein 117HS); Japtrap 115HS; Palmietspruit 68HS; Tweedepoort 54HS; Koppieskraal 56HS; Bergvliet 65HS; Weiland 59HS en Strydkraal 53HS. Die 40 – 140 MW OCGT demonstrasie aanleg vorm ook nie deel van die huidige ESS nie.

KENNISGEWING VAN BESIKBAARHEID VAN DIE VOORLOPIGE OMGEWINGS WERKS OMVANG STUDIE VERSLAG VIR PUBLIEKE HERSIENING

Alle B&GPs word hiermee in kennis gestel dat die voorlopige Omgewings Werks Omvang Studie Verslag (ESR) beskikbaar sal wees vir publieke kommentaar vanaf die **22ste Oktober 2012** tot **07 Januarie 2013**. Hierdie voorlopige dokument som al die hoof omgewings kwessies geïdentifiseer tot op datum, en sal beskikbaar wees vir besigtiging op die volgende plekke:

- Volksrust Publieke Biblioteek, H/v Joubert & Laingsnek Straat (Volksrust)
- Amersfoort Publieke Biblioteek, H/v Plein & Bree Straat (Amersfoort)
- UCG Mynggebou Aanleg kantore, Majuba Colliery, Bergvliet, Amersfoort
- Kantoor van Royal HaskoningDHV, 78 Kalkoen Straat, Monument Park (Pretoria)
- Royal HaskoningDHV web-tuiste (<http://www.rhdhv.co.za/pages/services/environmental/current-projects.php>)

WIE KAN U KONTAK?

Royal HaskoningDHV is die aangestelde onafhanklike Omgewings Impak Praktisyn (EAP), wat die nodige omgewings impak assesserings en openbare deelname prosesse vir die projek sal behartig. Om te registreer as 'n Belanghebbende en Geaffekteerde Party (B&GP) en sodiende meer informasie oor die projek te verkry, verskaf asseblief u naam, kontak besonderhede en belang in die projek op die aangehegte registrasie en kommentaar vorm en versend aan:

Sibongile Hlomuka
Royal HaskoningDHV
Posbus 867, Gallo Manor, 2052
Tel: 011 798 6000
Faks: 011 798 6010
Epos: sibongile.hlomuka@rhdhv.com

Die uwe,

Sibongile Hlomuka



Royal HaskoningDHV

Enhancing Society Together

LANDOWNER CONSULTATION

Date: 08 – 12 October 2012-10-08

I herewith confirm receipt and acceptance of the letter dated 08 October 2012. I confirm that all comments, issues and concerns will be dealt with as stipulated in the abovementioned letter.

Name and Surname	ID No	Address	Telephone/Contact Number	Signature
HENNIE WOLDENHAGER	6609145101087	KLAAS WEILAND	0623340979	
M.J. Louwrens	7601045019088	Roodekopjes	0837907696	
E. J. J. DEACON	11412385005089	BERGULZET	0827401293	
C. od Merwe (OH Letz)	9204085106085	Springfontein.	082 1685608	
Cyd Merwe (Heinout Letz)	9204085106085	Springfontein	082 785 2625	
J.J. LAMBERTS	660425546089	BERGULZET	0828252134	
J.A. FOUVIE	7109255090088	Koppieskraal	0828022125	
J.J. van Niekoff	0727020766			
A. LABRACHARNE	571129090085	KOPPIESKRAAL	rockcrest@vodanet.co.za	
J. VAN TRUST		PAWLIETS PRUIT		
G. Nel	7603235030081	Slagfontein	0824915320	
F.S.	0828858484	St. Jansdal		
JDS Swart		Tweedepoort		

iatbdry@gmail.com

SSI Engineers and Environmental Consultants (Pty) Ltd
trading as Royal HaskoningDHV

Reg No. 1966/001916/07

PO Box 867, Gallo Manor, 2052, South Africa

T: +27(0)11 798 6000 / F: +27(0)11 798 6005

Email: johannesburg@rhdhv.com

www.rhdhv.co.za



**REGISTERED LETTER
GEREGISTREERDE BRIEF**

(with an insurance option/met 'n versekeringsopsie)



Postage paid R _____ C
 Service fee / Diensgeld R _____ C
 Insurance / Versekering R _____ C
 Total / Totaal R _____ C

Full tracking and tracing/Volledige volg en spoor

Addressed to/Geadresseer aan
DRIE SUSIE BOEDERY
Box 3865

Postcode
 Poskode

Insured value of contents
 Versekerde waarde van inhoud R _____ C

Enquiries/Navrae
 Toll-free number
 Tolvry nommer
0800 111 502

Initial of
 accepting
 officer

Date Stamp



The value of the contents of this letter is as indicated and compensation is not payable for a letter received unconditionally. Compensation is limited to R100.00. No compensation is payable without documentary proof. Optional insurance up to R2 000.00 is available and applies to domestic registered letters only.

Die waarde van die inhoud van hierdie brief is soos aangedui en vergoeding sal nie betaal word vir 'n brief wat sonder voorbehoud ontvang word nie. Vergoeding is beperk tot R100.00. Geen vergoeding is sonder dokumentere bewys betaalbaar nie. Opsionele versekering tot R2 000.00 is beskikbaar en is slegs op binnelandse geregistreerde briewe van toepassing.

Affix Track
 custom
REGISTERED LETTER
 (with a domestic insurance option)
RD 710 721 222 ZA
A BOOK COPY
 Plak Volg-en-Spoor
 klientafskrif

beampte

**REGISTERED LETTER
GEREGISTREERDE BRIEF**

(with an insurance option/met 'n versekeringsopsie)



Postage paid R _____ C
 Service fee / Diensgeld R _____ C
 Insurance / Versekering R _____ C
 Total / Totaal R _____ C

Full tracking and tracing/Volledige volg en spoor

Addressed to/Geadresseer aan
Landless People of Daggabrad
Box 765

Postcode
 Poskode

Insured value of contents
 Versekerde waarde van inhoud R _____ C

Enquiries/Navrae
 Toll-free number
 Tolvry nommer
0800 111 502

Initial of
 accepting
 officer

Date Stamp



The value of the contents of this letter is as indicated and compensation is not payable for a letter received unconditionally. Compensation is limited to R100.00. No compensation is payable without documentary proof. Optional insurance up to R2 000.00 is available and applies to domestic registered letters only.

Die waarde van die inhoud van hierdie brief is soos aangedui en vergoeding sal nie betaal word vir 'n brief wat sonder voorbehoud ontvang word nie. Vergoeding is beperk tot R100.00. Geen vergoeding is sonder dokumentere bewys betaalbaar nie. Opsionele versekering tot R2 000.00 is beskikbaar en is slegs op binnelandse geregistreerde briewe van toepassing.

Affix Track
 custom
REGISTERED LETTER
 (with a domestic insurance option)
 ShareCall 0860 111 502 www.sapo.co.za
RD 710 721 298 ZA
CUSTOMER COPY 301028R
 klientafskrif

Paraaf van
 aaneem-
 beampte

**REGISTERED LETTER
GEREGISTREERDE BRIEF**

(with an insurance option/met 'n versekeringsopsie)



Postage paid R _____ C
 Service fee / Diensgeld R _____ C
 Insurance / Versekering R _____ C
 Total / Totaal R _____ C

Full tracking and tracing/Volledige volg en spoor

Addressed to/Geadresseer aan
SEA Barnard Familie Trust
Box 270

Postcode
 Poskode

Insured value of contents
 Versekerde waarde van inhoud R _____ C

Enquiries/Navrae
 Toll-free number
 Tolvry nommer
0800 111 502

Initial of
 accepting
 officer

Date Stamp



The value of the contents of this letter is as indicated and compensation is not payable for a letter received unconditionally. Compensation is limited to R100.00. No compensation is payable without documentary proof. Optional insurance up to R2 000.00 is available and applies to domestic registered letters only.

Die waarde van die inhoud van hierdie brief is soos aangedui en vergoeding sal nie betaal word vir 'n brief wat sonder voorbehoud ontvang word nie. Vergoeding is beperk tot R100.00. Geen vergoeding is sonder dokumentere bewys betaalbaar nie. Opsionele versekering tot R2 000.00 is beskikbaar en is slegs op binnelandse geregistreerde briewe van toepassing.

Affix Track
 custom
REGISTERED LETTER
 (with a domestic insurance option)
 ShareCall 0860 111 502 www.sapo.co.za
RD 710 721 284 ZA
CUSTOMER COPY 301028R
 klientafskrif

Paraaf van
 aaneem-
 beampte

**REGISTERED LETTER
GEREGISTREERDE BRIEF**

(with an insurance option/met 'n versekeringsopsie)



Full tracking and tracing/Volledige volg en spoor

Addressed to/Geadresseer aan
 Hlangani Trust
 Box 705

 _____ Postcode
 _____ Poskode

Postage paid R _____ c
 Service fee / Diensgeld R _____ c
 Insurance / Versekering R _____ c
 Total / Totaal R _____ c

Insured value of contents
 Versekerde waarde van inhoud R _____ c

Enquiries/Navrae
 Toll-free number
 Tolvry nommer
0800 111 502

Initial of
 accepting
 officer



701281

The value of the contents of this letter is as indicated and compensation is not payable for a letter received unconditionally. Compensation is limited to R100.00. No compensation is payable without documentary proof. Optional insurance up to R2 000.00 is available and applies to domestic registered letters only.

Die waarde van die inhoud van hierdie brief is soos aangedui en vergoeding sal nie betaal word vir 'n brief wat sonder voorbehoud ontvang word nie. Vergoeding is beperk tot R100.00. Geen vergoeding sonder dokumentere bewys betaalbaar nie. Opsionele versekering tot R2 000.00 is beskikbaar en is slegs op binnelandse geregistreerde briewe van toepassing.

**REGISTERED LETTER
(with a domestic insurance option)**

RD 710 721 236 ZA

A BOOK COPY

klientatskrif

Paraaf van
 aaneem-
 beampte

Datumstempel

**REGISTERED LETTER
GEREGISTREERDE BRIEF**

(with an insurance option/met 'n versekeringsopsie)



Full tracking and tracing/Volledige volg en spoor

Addressed to/Geadresseer aan
 Pet Richard
 Box 505

 _____ Postcode
 _____ Poskode

Postage paid R _____ c
 Service fee / Diensgeld R _____ c
 Insurance / Versekering R _____ c
 Total / Totaal R _____ c

Insured value of contents
 Versekerde waarde van inhoud R _____ c

Enquiries/Navrae
 Toll-free number
 Tolvry nommer
0800 111 502

Initial of
 accepting
 officer



701281

The value of the contents of this letter is as indicated and compensation is not payable for a letter received unconditionally. Compensation is limited to R100.00. No compensation is payable without documentary proof. Optional insurance up to R2 000.00 is available and applies to domestic registered letters only.

Die waarde van die inhoud van hierdie brief is soos aangedui en vergoeding sal nie betaal word vir 'n brief wat sonder voorbehoud ontvang word nie. Vergoeding is beperk tot R100.00. Geen vergoeding sonder dokumentere bewys betaalbaar nie. Opsionele versekering tot R2 000.00 is beskikbaar en is slegs op binnelandse geregistreerde briewe van toepassing.

**REGISTERED LETTER
(with a domestic insurance option)**

RD 710 721 275 ZA

A BOOK COPY

klientatskrif

Paraaf van
 aaneem-
 beampte

Datumstempel

MUNICIPAL COUNCILLORS

08 October 2012

DEA Reference: 14/12/16/3/3/3/61
Our Reference: E02.JNB.000308

Councillor: T.A Mazibuko
Volksrust Ward 1
Dr. Pixley ka Isaka Seme Local Municipality
Private Bag X9011
Volksrust
2470

Dear Councillor Mazibuko,

ENVIRONMENTAL IMPACT ASSESSMENT AND WASTE MANAGEMENT LICENSE APPLICATION FOR THE UNDERGROUND COAL GASIFICATION PROJECT AND ASSOCIATED INFRASTRUCTURE IN SUPPORT OF CO-FIRING OF GAS AT THE MAJUBA POWER STATION, AMERSFOORT, MPUMALANGA

Notice is hereby given in terms of the National Environmental Management Act, 1998 (Act No 107 of 1998) as amended, Environmental Impact Regulations (2010) as well as the National Environmental Management: Waste Act, 2008 (Act No 59 of 2008) that Eskom Holdings SOC Ltd ('Eskom') has submitted an integrated application for Environmental Authorisation and Waste Management License to the Department of Environmental Affairs (DEA). Eskom intends to undertake a Scoping and EIA study and submit Scoping and Environmental Impact Reports to DEA in support of the proposed project.

The proposed project entails the following:

- Implementation of underground coal gasification (UCG) technology on the farm Roodekopjes 67HS (Portions 1, 2, 3 and remaining extent). UCG is a process whereby coal is converted *in situ* into combustible gas that can be used for power generation. The study area falls within the administrative boundaries of Pixley ka Seme Local Municipality.
- In order to meet the fuel requirements for optimal power generation at the Majuba Power Station, Eskom proposes the use of synthetic gas or syngas (15000 Nm³/hr) produced by the UCG process as a supplementary fuel source within the boilers at the power station. The 15000 Nm³/hr plant will be scaled up to 70000 Nm³/hr.
- Ancillary infrastructure associated with the project on the farm Roodekopjes 67HS include: production and injection wells, monitoring boreholes, gas treatment plant, process and raw water dams, site offices, access roads and electrical infrastructure.
- In addition, a wastewater treatment works on Portion 21 of Bergvliet 65HS and a new service road to be constructed between the entrance to the site office complex on Portion 17 of farm Bergvliet 65HS and Portions 4 and 5 of the farm Rietfontein 66HS before linking up to the UCG site on the borders of Portions 2 and 3 of the farm Roodekopjes 67HS will be included in this study.
- Eskom are also in the process of applying for an Integrated Water Use License (IWULA) from the Department of Water Affairs for the water uses associated with the project.

Please refer to the attached Background Information Document (BID) for more information regarding the project.

Project Background:

An Environmental Scoping Study (ESS) was initiated in 2009 for the UCG pilot project and associated infrastructure including the 40 – 140 MW OCGT demonstration plant and gas treatment plants (DEA Ref 12/12/20/1617). The environmental impacts associated with the project required investigation in compliance with the EIA Regulations (2006) published in Government Notice No. R. 385 to No. R. 387 and read with Section 24 (5) of the National Environmental Management Act - NEMA (Act No 107 of 1998) – as



SSI Engineers and Environmental Consultants (Pty) Ltd
trading as Royal HaskoningDHV

Reg No. 1966/001916/07

PO Box 867, Gallo Manor, 2052, South Africa

T: +27(0)11 798 6000 / F: +27(0)11 798 6005

Email: johannesburg@rhdhv.com

www.rhdhv.co.za

amended). The final Environmental Scoping Report for the project was accepted by the Department of Environmental Affairs (DEA) in March 2010.

Due to the research and development (R&D) nature of the project, detailed engineering information / design hindered the progress of the EIA process, which resulted in a time lapse between the ESS and the EIA study. The applicant (Eskom) was then advised by the DEA to start the EIA study afresh under the EIA Regulations (2010). The project study area has since also been reduced to focus only on the farm Roodekopjes 67HS, Bergvliet 65 HS (Portions 17 & 21) and Rietfontein 66HS (Portions 4 & 5). In the previous ESS the following farms were also included as part of the study area: Rietfontein 66HS (including Klein Rietfontein 117HS); Japtrap 115HS; Palmietspruit 68HS; Tweedepoort 54HS; Koppieskraal 56HS; Bergvliet 65HS; Weiland 59HS and Strydkraal 53HS. The 40 – 140 MW OCGT demonstration plant also does not form part of the scope of the current ESS.

NOTICE OF AVAILABILITY OF THE DRAFT ENVIRONMENTAL SCOPING REPORT FOR PUBLIC REVIEW

All I&APs are hereby notified that the draft Environmental Scoping Report (ESR) will be available for public comment from **22 October 2012 to 07 January 2013**. The draft ESR will summarise key environmental issues identified to date and will be available at the following places:

- Volksrust Public Library, Cnr Joubert & Laingsnek Street (Volksrust)
- Amersfoort Public Library, Cnr Plein & Bree Street (Amersfoort)
- UCG Mine Site Offices, Majuba Colliery, Bergvliet, Amersfoort
- Office of Royal HaskoningDHV, 78 Kalkoen Street, Monument Park (Pretoria)
- Royal HaskoningDHV website (<http://www.rhdhv.co.za/pages/services/environmental/current-projects.php>)

WHO SHOULD YOU CONTACT?

Royal HaskoningDHV is the appointed independent Environmental Assessment Practitioner (EAP), undertaking the required environmental impact assessment and public participation process for the project. To register as an Interested and Affected Party (I&AP) and to obtain more details about the project, please submit your name, contact information and interest in the project on the attached registration and comment form to:

Sibongile Hlomuka
Royal HaskoningDHV
PO Box 867, Gallo Manor, 2052
Tel: 011 798 6000
Fax: 011 798 6010
Email: sibongile.hlomuka@rhdhv.com

Yours sincerely,



Sibongile Hlomuka

08 October 2012

DEA Reference: 14/12/16/3/3/3/61
Our Reference: E02.JNB.000308

Councillor: BG Mavuso
Volksrust Ward 2
Dr. Pixley ka Isaka Seme Local Municipality
Private Bag X9011
Volksrust
2470

Dear Councillor Mavuso,

ENVIRONMENTAL IMPACT ASSESSMENT AND WASTE MANAGEMENT LICENSE APPLICATION FOR THE UNDERGROUND COAL GASIFICATION PROJECT AND ASSOCIATED INFRASTRUCTURE IN SUPPORT OF CO-FIRING OF GAS AT THE MAJUBA POWER STATION, AMERSFOORT, MPUMALANGA

Notice is hereby given in terms of the National Environmental Management Act, 1998 (Act No 107 of 1998) as amended, Environmental Impact Regulations (2010) as well as the National Environmental Management: Waste Act, 2008 (Act No 59 of 2008) that Eskom Holdings SOC Ltd ('Eskom') has submitted an integrated application for Environmental Authorisation and Waste Management License to the Department of Environmental Affairs (DEA). Eskom intends to undertake a Scoping and EIA study and submit Scoping and Environmental Impact Reports to DEA in support of the proposed project.

The proposed project entails the following:

- Implementation of underground coal gasification (UCG) technology on the farm Roodekopjes 67HS (Portions 1, 2, 3 and remaining extent). UCG is a process whereby coal is converted *in situ* into combustible gas that can be used for power generation. The study area falls within the administrative boundaries of Pixley ka Seme Local Municipality.
- In order to meet the fuel requirements for optimal power generation at the Majuba Power Station, Eskom proposes the use of synthetic gas or syngas (15000 Nm³/hr) produced by the UCG process as a supplementary fuel source within the boilers at the power station. The 15000 Nm³/hr plant will be scaled up to 70000 Nm³/hr.
- Ancillary infrastructure associated with the project on the farm Roodekopjes 67HS include: production and injection wells, monitoring boreholes, gas treatment plant, process and raw water dams, site offices, access roads and electrical infrastructure.
- In addition, a wastewater treatment works on Portion 21 of Bergvliet 65HS and a new service road to be constructed between the entrance to the site office complex on Portion 17 of farm Bergvliet 65HS and Portions 4 and 5 of the farm Rietfontein 66HS before linking up to the UCG site on the borders of Portions 2 and 3 of the farm Roodekopjes 67HS will be included in this study.
- Eskom are also in the process of applying for an Integrated Water Use License (IWULA) from the Department of Water Affairs for the water uses associated with the project.

Please refer to the attached Background Information Document (BID) for more information regarding the project.

Project Background:

An Environmental Scoping Study (ESS) was initiated in 2009 for the UCG pilot project and associated infrastructure including the 40 – 140 MW OCGT demonstration plant and gas treatment plants (DEA Ref 12/12/20/1617). The environmental impacts associated with the project required investigation in compliance with the EIA Regulations (2006) published in Government Notice No. R. 385 to No. R. 387 and read with Section 24 (5) of the National Environmental Management Act - NEMA (Act No 107 of 1998) – as



SSI Engineers and Environmental Consultants (Pty) Ltd
trading as Royal HaskoningDHV

Reg No. 1966/001916/07

PO Box 867, Gallo Manor, 2052, South Africa

T: +27(0)11 798 6000 / F: +27(0)11 798 6005

Email: johannesburg@rhdhv.com

www.rhdhv.co.za

amended). The final Environmental Scoping Report for the project was accepted by the Department of Environmental Affairs (DEA) in March 2010.

Due to the research and development (R&D) nature of the project, detailed engineering information / design hindered the progress of the EIA process, which resulted in a time lapse between the ESS and the EIA study. The applicant (Eskom) was then advised by the DEA to start the EIA study afresh under the EIA Regulations (2010). The project study area has since also been reduced to focus only on the farm Roodekopjes 67HS, Bergvliet 65 HS (Portions 17 & 21) and Rietfontein 66HS (Portions 4 & 5). In the previous ESS the following farms were also included as part of the study area: Rietfontein 66HS (including Klein Rietfontein 117HS); Japtrap 115HS; Palmietspruit 68HS; Tweedepoort 54HS; Koppieskraal 56HS; Bergvliet 65HS; Weiland 59HS and Strydkraal 53HS. The 40 – 140 MW OCGT demonstration plant also does not form part of the scope of the current ESS.

NOTICE OF AVAILABILITY OF THE DRAFT ENVIRONMENTAL SCOPING REPORT FOR PUBLIC REVIEW

All I&APs are hereby notified that the draft Environmental Scoping Report (ESR) will be available for public comment from **22 October 2012 to 07 January 2013**. The draft ESR will summarise key environmental issues identified to date and will be available at the following places:

- Volksrust Public Library, Cnr Joubert & Laingsnek Street (Volksrust)
- Amersfoort Public Library, Cnr Plein & Bree Street (Amersfoort)
- UCG Mine Site Offices, Majuba Colliery, Bergvliet, Amersfoort
- Office of Royal HaskoningDHV, 78 Kalkoen Street, Monument Park (Pretoria)
- Royal HaskoningDHV website (<http://www.rhdhv.co.za/pages/services/environmental/current-projects.php>)

WHO SHOULD YOU CONTACT?

Royal HaskoningDHV is the appointed independent Environmental Assessment Practitioner (EAP), undertaking the required environmental impact assessment and public participation process for the project. To register as an Interested and Affected Party (I&AP) and to obtain more details about the project, please submit your name, contact information and interest in the project on the attached registration and comment form to:

Sibongile Hlomuka
Royal HaskoningDHV
PO Box 867, Gallo Manor, 2052
Tel: 011 798 6000
Fax: 011 798 6010
Email: sibongile.hlomuka@rhdhv.com

Yours sincerely,



Sibongile Hlomuka

08 October 2012

DEA Reference: 14/12/16/3/3/3/61
Our Reference: E02.JNB.000308

Councillor: N.E Hlakutse
Volksrust Ward 3
Dr. Pixley ka Isaka Seme Local Municipality
Private Bag X9011
Volksrust
2470

Dear Councillor Hlakutse

ENVIRONMENTAL IMPACT ASSESSMENT AND WASTE MANAGEMENT LICENSE APPLICATION FOR THE UNDERGROUND COAL GASIFICATION PROJECT AND ASSOCIATED INFRASTRUCTURE IN SUPPORT OF CO-FIRING OF GAS AT THE MAJUBA POWER STATION, AMERSFOORT, MPUMALANGA

Notice is hereby given in terms of the National Environmental Management Act, 1998 (Act No 107 of 1998) as amended, Environmental Impact Regulations (2010) as well as the National Environmental Management: Waste Act, 2008 (Act No 59 of 2008) that Eskom Holdings SOC Ltd ('Eskom') has submitted an integrated application for Environmental Authorisation and Waste Management License to the Department of Environmental Affairs (DEA). Eskom intends to undertake a Scoping and EIA study and submit Scoping and Environmental Impact Reports to DEA in support of the proposed project.

The proposed project entails the following:

- Implementation of underground coal gasification (UCG) technology on the farm Roodekopjes 67HS (Portions 1, 2, 3 and remaining extent). UCG is a process whereby coal is converted *in situ* into combustible gas that can be used for power generation. The study area falls within the administrative boundaries of Pixley ka Seme Local Municipality.
- In order to meet the fuel requirements for optimal power generation at the Majuba Power Station, Eskom proposes the use of synthetic gas or syngas (15000 Nm³/hr) produced by the UCG process as a supplementary fuel source within the boilers at the power station. The 15000 Nm³/hr plant will be scaled up to 70000 Nm³/hr.
- Ancillary infrastructure associated with the project on the farm Roodekopjes 67HS include: production and injection wells, monitoring boreholes, gas treatment plant, process and raw water dams, site offices, access roads and electrical infrastructure.
- In addition, a wastewater treatment works on Portion 21 of Bergvliet 65HS and a new service road to be constructed between the entrance to the site office complex on Portion 17 of farm Bergvliet 65HS and Portions 4 and 5 of the farm Rietfontein 66HS before linking up to the UCG site on the borders of Portions 2 and 3 of the farm Roodekopjes 67HS will be included in this study.
- Eskom are also in the process of applying for an Integrated Water Use License (IWULA) from the Department of Water Affairs for the water uses associated with the project.

Please refer to the attached Background Information Document (BID) for more information regarding the project.

Project Background:

An Environmental Scoping Study (ESS) was initiated in 2009 for the UCG pilot project and associated infrastructure including the 40 – 140 MW OCGT demonstration plant and gas treatment plants (DEA Ref 12/12/20/1617). The environmental impacts associated with the project required investigation in compliance with the EIA Regulations (2006) published in Government Notice No. R. 385 to No. R. 387 and read with Section 24 (5) of the National Environmental Management Act - NEMA (Act No 107 of 1998) – as



SSI Engineers and Environmental Consultants (Pty) Ltd
trading as Royal HaskoningDHV

Reg No. 1966/001916/07

PO Box 867, Gallo Manor, 2052, South Africa

T: +27(0)11 798 6000 / F: +27(0)11 798 6005

Email: johannesburg@rhdhv.com

www.rhdhv.co.za

amended). The final Environmental Scoping Report for the project was accepted by the Department of Environmental Affairs (DEA) in March 2010.

Due to the research and development (R&D) nature of the project, detailed engineering information / design hindered the progress of the EIA process, which resulted in a time lapse between the ESS and the EIA study. The applicant (Eskom) was then advised by the DEA to start the EIA study afresh under the EIA Regulations (2010). The project study area has since also been reduced to focus only on the farm Roodekopjes 67HS, Bergvliet 65 HS (Portions 17 & 21) and Rietfontein 66HS (Portions 4 & 5). In the previous ESS the following farms were also included as part of the study area: Rietfontein 66HS (including Klein Rietfontein 117HS); Japtrap 115HS; Palmietspruit 68HS; Tweedepoort 54HS; Koppieskraal 56HS; Bergvliet 65HS; Weiland 59HS and Strydkraal 53HS. The 40 – 140 MW OCGT demonstration plant also does not form part of the scope of the current ESS.

NOTICE OF AVAILABILITY OF THE DRAFT ENVIRONMENTAL SCOPING REPORT FOR PUBLIC REVIEW

All I&APs are hereby notified that the draft Environmental Scoping Report (ESR) will be available for public comment from **22 October 2012 to 07 January 2013**. The draft ESR will summarise key environmental issues identified to date and will be available at the following places:

- Volksrust Public Library, Cnr Joubert & Laingsnek Street (Volksrust)
- Amersfoort Public Library, Cnr Plein & Bree Street (Amersfoort)
- UCG Mine Site Offices, Majuba Colliery, Bergvliet, Amersfoort
- Office of Royal HaskoningDHV, 78 Kalkoen Street, Monument Park (Pretoria)
- Royal HaskoningDHV website (<http://www.rhdhv.co.za/pages/services/environmental/current-projects.php>)

WHO SHOULD YOU CONTACT?

Royal HaskoningDHV is the appointed independent Environmental Assessment Practitioner (EAP), undertaking the required environmental impact assessment and public participation process for the project. To register as an Interested and Affected Party (I&AP) and to obtain more details about the project, please submit your name, contact information and interest in the project on the attached registration and comment form to:

Sibongile Hlomuka
Royal HaskoningDHV
PO Box 867, Gallo Manor, 2052
Tel: 011 798 6000
Fax: 011 798 6010
Email: sibongile.hlomuka@rhdhv.com

Yours sincerely,



Sibongile Hlomuka

08 October 2012

DEA Reference: 14/12/16/3/3/3/61
Our Reference: E02.JNB.000308

Councillor: D Jager
Volksrust Ward 4
Dr. Pixley ka Isaka Seme Local Municipality
Private Bag X9011
Volksrust
2470

Dear Councillor Jager,

ENVIRONMENTAL IMPACT ASSESSMENT AND WASTE MANAGEMENT LICENSE APPLICATION FOR THE UNDERGROUND COAL GASIFICATION PROJECT AND ASSOCIATED INFRASTRUCTURE IN SUPPORT OF CO-FIRING OF GAS AT THE MAJUBA POWER STATION, AMERSFOORT, MPUMALANGA

Notice is hereby given in terms of the National Environmental Management Act, 1998 (Act No 107 of 1998) as amended, Environmental Impact Regulations (2010) as well as the National Environmental Management: Waste Act, 2008 (Act No 59 of 2008) that Eskom Holdings SOC Ltd ('Eskom') has submitted an integrated application for Environmental Authorisation and Waste Management License to the Department of Environmental Affairs (DEA). Eskom intends to undertake a Scoping and EIA study and submit Scoping and Environmental Impact Reports to DEA in support of the proposed project.

The proposed project entails the following:

- Implementation of underground coal gasification (UCG) technology on the farm Roodekopjes 67HS (Portions 1, 2, 3 and remaining extent). UCG is a process whereby coal is converted *in situ* into combustible gas that can be used for power generation. The study area falls within the administrative boundaries of Pixley ka Seme Local Municipality.
- In order to meet the fuel requirements for optimal power generation at the Majuba Power Station, Eskom proposes the use of synthetic gas or syngas (15000 Nm³/hr) produced by the UCG process as a supplementary fuel source within the boilers at the power station. The 15000 Nm³/hr plant will be scaled up to 70000 Nm³/hr.
- Ancillary infrastructure associated with the project on the farm Roodekopjes 67HS include: production and injection wells, monitoring boreholes, gas treatment plant, process and raw water dams, site offices, access roads and electrical infrastructure.
- In addition, a wastewater treatment works on Portion 21 of Bergvliet 65HS and a new service road to be constructed between the entrance to the site office complex on Portion 17 of farm Bergvliet 65HS and Portions 4 and 5 of the farm Rietfontein 66HS before linking up to the UCG site on the borders of Portions 2 and 3 of the farm Roodekopjes 67HS will be included in this study.
- Eskom are also in the process of applying for an Integrated Water Use License (IWULA) from the Department of Water Affairs for the water uses associated with the project.

Please refer to the attached Background Information Document (BID) for more information regarding the project.

Project Background:

An Environmental Scoping Study (ESS) was initiated in 2009 for the UCG pilot project and associated infrastructure including the 40 – 140 MW OCGT demonstration plant and gas treatment plants (DEA Ref 12/12/20/1617). The environmental impacts associated with the project required investigation in compliance with the EIA Regulations (2006) published in Government Notice No. R. 385 to No. R. 387 and read with Section 24 (5) of the National Environmental Management Act - NEMA (Act No 107 of 1998) – as



SSI Engineers and Environmental Consultants (Pty) Ltd
trading as Royal HaskoningDHV

Reg No. 1966/001916/07

PO Box 867, Gallo Manor, 2052, South Africa

T: +27(0)11 798 6000 / F: +27(0)11 798 6005

Email: johannesburg@rhdhv.com

www.rhdhv.co.za

amended). The final Environmental Scoping Report for the project was accepted by the Department of Environmental Affairs (DEA) in March 2010.

Due to the research and development (R&D) nature of the project, detailed engineering information / design hindered the progress of the EIA process, which resulted in a time lapse between the ESS and the EIA study. The applicant (Eskom) was then advised by the DEA to start the EIA study afresh under the EIA Regulations (2010). The project study area has since also been reduced to focus only on the farm Roodekopjes 67HS, Bergvliet 65 HS (Portions 17 & 21) and Rietfontein 66HS (Portions 4 & 5). In the previous ESS the following farms were also included as part of the study area: Rietfontein 66HS (including Klein Rietfontein 117HS); Japtrap 115HS; Palmietspruit 68HS; Tweedepoort 54HS; Koppieskraal 56HS; Bergvliet 65HS; Weiland 59HS and Strydkraal 53HS. The 40 – 140 MW OCGT demonstration plant also does not form part of the scope of the current ESS.

NOTICE OF AVAILABILITY OF THE DRAFT ENVIRONMENTAL SCOPING REPORT FOR PUBLIC REVIEW

All I&APs are hereby notified that the draft Environmental Scoping Report (ESR) will be available for public comment from **22 October 2012 to 07 January 2013**. The draft ESR will summarise key environmental issues identified to date and will be available at the following places:

- Volksrust Public Library, Cnr Joubert & Laingsnek Street (Volksrust)
- Amersfoort Public Library, Cnr Plein & Bree Street (Amersfoort)
- UCG Mine Site Offices, Majuba Colliery, Bergvliet, Amersfoort
- Office of Royal HaskoningDHV, 78 Kalkoen Street, Monument Park (Pretoria)
- Royal HaskoningDHV website (<http://www.rhdhv.co.za/pages/services/environmental/current-projects.php>)

WHO SHOULD YOU CONTACT?

Royal HaskoningDHV is the appointed independent Environmental Assessment Practitioner (EAP), undertaking the required environmental impact assessment and public participation process for the project. To register as an Interested and Affected Party (I&AP) and to obtain more details about the project, please submit your name, contact information and interest in the project on the attached registration and comment form to:

Sibongile Hlomuka
Royal HaskoningDHV
PO Box 867, Gallo Manor, 2052
Tel: 011 798 6000
Fax: 011 798 6010
Email: sibongile.hlomuka@rhdhv.com

Yours sincerely,



Sibongile Hlomuka

08 October 2012

DEA Reference: 14/12/16/3/3/3/61
Our Reference: E02.JNB.000308

Councillor: S.J Mazibuko
Pederkop Ward 6
Dr. Pixley ka Isaka Seme Local Municipality
Private Bag X9011
Volksrust
2470

Dear Councillor Mazibuko,

ENVIRONMENTAL IMPACT ASSESSMENT AND WASTE MANAGEMENT LICENSE APPLICATION FOR THE UNDERGROUND COAL GASIFICATION PROJECT AND ASSOCIATED INFRASTRUCTURE IN SUPPORT OF CO-FIRING OF GAS AT THE MAJUBA POWER STATION, AMERSFOORT, MPUMALANGA

Notice is hereby given in terms of the National Environmental Management Act, 1998 (Act No 107 of 1998) as amended, Environmental Impact Regulations (2010) as well as the National Environmental Management: Waste Act, 2008 (Act No 59 of 2008) that Eskom Holdings SOC Ltd ('Eskom') has submitted an integrated application for Environmental Authorisation and Waste Management License to the Department of Environmental Affairs (DEA). Eskom intends to undertake a Scoping and EIA study and submit Scoping and Environmental Impact Reports to DEA in support of the proposed project.

The proposed project entails the following:

- Implementation of underground coal gasification (UCG) technology on the farm Roodekopjes 67HS (Portions 1, 2, 3 and remaining extent). UCG is a process whereby coal is converted *in situ* into combustible gas that can be used for power generation. The study area falls within the administrative boundaries of Pixley ka Seme Local Municipality.
- In order to meet the fuel requirements for optimal power generation at the Majuba Power Station, Eskom proposes the use of synthetic gas or syngas (15000 Nm³/hr) produced by the UCG process as a supplementary fuel source within the boilers at the power station. The 15000 Nm³/hr plant will be scaled up to 70000 Nm³/hr.
- Ancillary infrastructure associated with the project on the farm Roodekopjes 67HS include: production and injection wells, monitoring boreholes, gas treatment plant, process and raw water dams, site offices, access roads and electrical infrastructure.
- In addition, a wastewater treatment works on Portion 21 of Bergvliet 65HS and a new service road to be constructed between the entrance to the site office complex on Portion 17 of farm Bergvliet 65HS and Portions 4 and 5 of the farm Rietfontein 66HS before linking up to the UCG site on the borders of Portions 2 and 3 of the farm Roodekopjes 67HS will be included in this study.
- Eskom are also in the process of applying for an Integrated Water Use License (IWULA) from the Department of Water Affairs for the water uses associated with the project.

Please refer to the attached Background Information Document (BID) for more information regarding the project.

Project Background:

An Environmental Scoping Study (ESS) was initiated in 2009 for the UCG pilot project and associated infrastructure including the 40 – 140 MW OCGT demonstration plant and gas treatment plants (DEA Ref 12/12/20/1617). The environmental impacts associated with the project required investigation in compliance with the EIA Regulations (2006) published in Government Notice No. R. 385 to No. R. 387 and read with Section 24 (5) of the National Environmental Management Act - NEMA (Act No 107 of 1998) – as



SSI Engineers and Environmental Consultants (Pty) Ltd
trading as Royal HaskoningDHV

Reg No. 1966/001916/07

PO Box 867, Gallo Manor, 2052, South Africa

T: +27(0)11 798 6000 / F: +27(0)11 798 6005

Email: johannesburg@rhdhv.com

www.rhdhv.co.za

amended). The final Environmental Scoping Report for the project was accepted by the Department of Environmental Affairs (DEA) in March 2010.

Due to the research and development (R&D) nature of the project, detailed engineering information / design hindered the progress of the EIA process, which resulted in a time lapse between the ESS and the EIA study. The applicant (Eskom) was then advised by the DEA to start the EIA study afresh under the EIA Regulations (2010). The project study area has since also been reduced to focus only on the farm Roodekopjes 67HS, Bergvliet 65 HS (Portions 17 & 21) and Rietfontein 66HS (Portions 4 & 5). In the previous ESS the following farms were also included as part of the study area: Rietfontein 66HS (including Klein Rietfontein 117HS); Japtrap 115HS; Palmietspruit 68HS; Tweedepoort 54HS; Koppieskraal 56HS; Bergvliet 65HS; Weiland 59HS and Strydkraal 53HS. The 40 – 140 MW OCGT demonstration plant also does not form part of the scope of the current ESS.

NOTICE OF AVAILABILITY OF THE DRAFT ENVIRONMENTAL SCOPING REPORT FOR PUBLIC REVIEW

All I&APs are hereby notified that the draft Environmental Scoping Report (ESR) will be available for public comment from **22 October 2012 to 07 January 2013**. The draft ESR will summarise key environmental issues identified to date and will be available at the following places:

- Volksrust Public Library, Cnr Joubert & Laingsnek Street (Volksrust)
- Amersfoort Public Library, Cnr Plein & Bree Street (Amersfoort)
- UCG Mine Site Offices, Majuba Colliery, Bergvliet, Amersfoort
- Office of Royal HaskoningDHV, 78 Kalkoen Street, Monument Park (Pretoria)
- Royal HaskoningDHV website (<http://www.rhdhv.co.za/pages/services/environmental/current-projects.php>)

WHO SHOULD YOU CONTACT?

Royal HaskoningDHV is the appointed independent Environmental Assessment Practitioner (EAP), undertaking the required environmental impact assessment and public participation process for the project. To register as an Interested and Affected Party (I&AP) and to obtain more details about the project, please submit your name, contact information and interest in the project on the attached registration and comment form to:

Sibongile Hlomuka
Royal HaskoningDHV
PO Box 867, Gallo Manor, 2052
Tel: 011 798 6000
Fax: 011 798 6010
Email: sibongile.hlomuka@rhdhv.com

Yours sincerely,



Sibongile Hlomuka

08 October 2012

DEA Reference: 14/12/16/3/3/3/61
Our Reference: E02.JNB.000308

Councillor: OT Shabangu
Amersfoort Ward 7
Dr. Pixley ka Isaka Seme Local Municipality
Private Bag X9011,
Volksrust
2470

Dear Councillor Shabangu,

ENVIRONMENTAL IMPACT ASSESSMENT AND WASTE MANAGEMENT LICENSE APPLICATION FOR THE UNDERGROUND COAL GASIFICATION PROJECT AND ASSOCIATED INFRASTRUCTURE IN SUPPORT OF CO-FIRING OF GAS AT THE MAJUBA POWER STATION, AMERSFOORT, MPUMALANGA

Notice is hereby given in terms of the National Environmental Management Act, 1998 (Act No 107 of 1998) as amended, Environmental Impact Regulations (2010) as well as the National Environmental Management: Waste Act, 2008 (Act No 59 of 2008) that Eskom Holdings SOC Ltd ('Eskom') has submitted an integrated application for Environmental Authorisation and Waste Management License to the Department of Environmental Affairs (DEA). Eskom intends to undertake a Scoping and EIA study and submit Scoping and Environmental Impact Reports to DEA in support of the proposed project.

The proposed project entails the following:

- Implementation of underground coal gasification (UCG) technology on the farm Roodekopjes 67HS (Portions 1, 2, 3 and remaining extent). UCG is a process whereby coal is converted *in situ* into combustible gas that can be used for power generation. The study area falls within the administrative boundaries of Pixley ka Seme Local Municipality.
- In order to meet the fuel requirements for optimal power generation at the Majuba Power Station, Eskom proposes the use of synthetic gas or syngas (15000 Nm³/hr) produced by the UCG process as a supplementary fuel source within the boilers at the power station. The 15000 Nm³/hr plant will be scaled up to 70000 Nm³/hr.
- Ancillary infrastructure associated with the project on the farm Roodekopjes 67HS include: production and injection wells, monitoring boreholes, gas treatment plant, process and raw water dams, site offices, access roads and electrical infrastructure.
- In addition, a wastewater treatment works on Portion 21 of Bergvliet 65HS and a new service road to be constructed between the entrance to the site office complex on Portion 17 of farm Bergvliet 65HS and Portions 4 and 5 of the farm Rietfontein 66HS before linking up to the UCG site on the borders of Portions 2 and 3 of the farm Roodekopjes 67HS will be included in this study.
- Eskom are also in the process of applying for an Integrated Water Use License (IWULA) from the Department of Water Affairs for the water uses associated with the project.

Please refer to the attached Background Information Document (BID) for more information regarding the project.

Project Background:

An Environmental Scoping Study (ESS) was initiated in 2009 for the UCG pilot project and associated infrastructure including the 40 – 140 MW OCGT demonstration plant and gas treatment plants (DEA Ref 12/12/20/1617). The environmental impacts associated with the project required investigation in compliance with the EIA Regulations (2006) published in Government Notice No. R. 385 to No. R. 387 and read with Section 24 (5) of the National Environmental Management Act - NEMA (Act No 107 of 1998) – as



SSI Engineers and Environmental Consultants (Pty) Ltd
trading as Royal HaskoningDHV

Reg No. 1966/001916/07

PO Box 867, Gallo Manor, 2052, South Africa

T: +27(0)11 798 6000 / F: +27(0)11 798 6005

Email: johannesburg@rhdhv.com

www.rhdhv.co.za

amended). The final Environmental Scoping Report for the project was accepted by the Department of Environmental Affairs (DEA) in March 2010.

Due to the research and development (R&D) nature of the project, detailed engineering information / design hindered the progress of the EIA process, which resulted in a time lapse between the ESS and the EIA study. The applicant (Eskom) was then advised by the DEA to start the EIA study afresh under the EIA Regulations (2010). The project study area has since also been reduced to focus only on the farm Roodekopjes 67HS, Bergvliet 65 HS (Portions 17 & 21) and Rietfontein 66HS (Portions 4 & 5). In the previous ESS the following farms were also included as part of the study area: Rietfontein 66HS (including Klein Rietfontein 117HS); Japtrap 115HS; Palmietspruit 68HS; Tweedepoort 54HS; Koppieskraal 56HS; Bergvliet 65HS; Weiland 59HS and Strydkraal 53HS. The 40 – 140 MW OCGT demonstration plant also does not form part of the scope of the current ESS.

NOTICE OF AVAILABILITY OF THE DRAFT ENVIRONMENTAL SCOPING REPORT FOR PUBLIC REVIEW

All I&APs are hereby notified that the draft Environmental Scoping Report (ESR) will be available for public comment from **22 October 2012 to 07 January 2013**. The draft ESR will summarise key environmental issues identified to date and will be available at the following places:

- Volksrust Public Library, Cnr Joubert & Laingsnek Street (Volksrust)
- Amersfoort Public Library, Cnr Plein & Bree Street (Amersfoort)
- UCG Mine Site Offices, Majuba Colliery, Bergvliet, Amersfoort
- Office of Royal HaskoningDHV, 78 Kalkoen Street, Monument Park (Pretoria)
- Royal HaskoningDHV website (<http://www.rhdhv.co.za/pages/services/environmental/current-projects.php>)

WHO SHOULD YOU CONTACT?

Royal HaskoningDHV is the appointed independent Environmental Assessment Practitioner (EAP), undertaking the required environmental impact assessment and public participation process for the project. To register as an Interested and Affected Party (I&AP) and to obtain more details about the project, please submit your name, contact information and interest in the project on the attached registration and comment form to:

Sibongile Hlomuka
Royal HaskoningDHV
PO Box 867, Gallo Manor, 2052
Tel: 011 798 6000
Fax: 011 798 6010
Email: sibongile.hlomuka@rhdhv.com

Yours sincerely,



Sibongile Hlomuka

08 October 2012

DEA Reference: 14/12/16/3/3/3/61
Our Reference: E02.JNB.000308

Councillor: EM Thwala
Amersfoort Ward 8
Dr. Pixley ka Isaka Seme Local Municipality
Private Bag X9011,
Volksrust
2470

Dear Councillor Thwala,

ENVIRONMENTAL IMPACT ASSESSMENT AND WASTE MANAGEMENT LICENSE APPLICATION FOR THE UNDERGROUND COAL GASIFICATION PROJECT AND ASSOCIATED INFRASTRUCTURE IN SUPPORT OF CO-FIRING OF GAS AT THE MAJUBA POWER STATION, AMERSFOORT, MPUMALANGA

Notice is hereby given in terms of the National Environmental Management Act, 1998 (Act No 107 of 1998) as amended, Environmental Impact Regulations (2010) as well as the National Environmental Management: Waste Act, 2008 (Act No 59 of 2008) that Eskom Holdings SOC Ltd ('Eskom') has submitted an integrated application for Environmental Authorisation and Waste Management License to the Department of Environmental Affairs (DEA). Eskom intends to undertake a Scoping and EIA study and submit Scoping and Environmental Impact Reports to DEA in support of the proposed project.

The proposed project entails the following:

- Implementation of underground coal gasification (UCG) technology on the farm Roodekopjes 67HS (Portions 1, 2, 3 and remaining extent). UCG is a process whereby coal is converted *in situ* into combustible gas that can be used for power generation. The study area falls within the administrative boundaries of Pixley ka Seme Local Municipality.
- In order to meet the fuel requirements for optimal power generation at the Majuba Power Station, Eskom proposes the use of synthetic gas or syngas (15000 Nm³/hr) produced by the UCG process as a supplementary fuel source within the boilers at the power station. The 15000 Nm³/hr plant will be scaled up to 70000 Nm³/hr.
- Ancillary infrastructure associated with the project on the farm Roodekopjes 67HS include: production and injection wells, monitoring boreholes, gas treatment plant, process and raw water dams, site offices, access roads and electrical infrastructure.
- In addition, a wastewater treatment works on Portion 21 of Bergvliet 65HS and a new service road to be constructed between the entrance to the site office complex on Portion 17 of farm Bergvliet 65HS and Portions 4 and 5 of the farm Rietfontein 66HS before linking up to the UCG site on the borders of Portions 2 and 3 of the farm Roodekopjes 67HS will be included in this study.
- Eskom are also in the process of applying for an Integrated Water Use License (IWULA) from the Department of Water Affairs for the water uses associated with the project.

Please refer to the attached Background Information Document (BID) for more information regarding the project.

Project Background:

An Environmental Scoping Study (ESS) was initiated in 2009 for the UCG pilot project and associated infrastructure including the 40 – 140 MW OCGT demonstration plant and gas treatment plants (DEA Ref 12/12/20/1617). The environmental impacts associated with the project required investigation in compliance with the EIA Regulations (2006) published in Government Notice No. R. 385 to No. R. 387 and read with Section 24 (5) of the National Environmental Management Act - NEMA (Act No 107 of 1998) – as



SSI Engineers and Environmental Consultants (Pty) Ltd
trading as Royal HaskoningDHV

Reg No. 1966/001916/07

PO Box 867, Gallo Manor, 2052, South Africa

T: +27(0)11 798 6000 / F: +27(0)11 798 6005

Email: johannesburg@rhdhv.com

www.rhdhv.co.za

amended). The final Environmental Scoping Report for the project was accepted by the Department of Environmental Affairs (DEA) in March 2010.

Due to the research and development (R&D) nature of the project, detailed engineering information / design hindered the progress of the EIA process, which resulted in a time lapse between the ESS and the EIA study. The applicant (Eskom) was then advised by the DEA to start the EIA study afresh under the EIA Regulations (2010). The project study area has since also been reduced to focus only on the farm Roodekopjes 67HS, Bergvliet 65 HS (Portions 17 & 21) and Rietfontein 66HS (Portions 4 & 5). In the previous ESS the following farms were also included as part of the study area: Rietfontein 66HS (including Klein Rietfontein 117HS); Japtrap 115HS; Palmietspruit 68HS; Tweedepoort 54HS; Koppieskraal 56HS; Bergvliet 65HS; Weiland 59HS and Strydkraal 53HS. The 40 – 140 MW OCGT demonstration plant also does not form part of the scope of the current ESS.

NOTICE OF AVAILABILITY OF THE DRAFT ENVIRONMENTAL SCOPING REPORT FOR PUBLIC REVIEW

All I&APs are hereby notified that the draft Environmental Scoping Report (ESR) will be available for public comment from **22 October 2012 to 07 January 2013**. The draft ESR will summarise key environmental issues identified to date and will be available at the following places:

- Volksrust Public Library, Cnr Joubert & Laingsnek Street (Volksrust)
- Amersfoort Public Library, Cnr Plein & Bree Street (Amersfoort)
- UCG Mine Site Offices, Majuba Colliery, Bergvliet, Amersfoort
- Office of Royal HaskoningDHV, 78 Kalkoen Street, Monument Park (Pretoria)
- Royal HaskoningDHV website (<http://www.rhdhv.co.za/pages/services/environmental/current-projects.php>)

WHO SHOULD YOU CONTACT?

Royal HaskoningDHV is the appointed independent Environmental Assessment Practitioner (EAP), undertaking the required environmental impact assessment and public participation process for the project. To register as an Interested and Affected Party (I&AP) and to obtain more details about the project, please submit your name, contact information and interest in the project on the attached registration and comment form to:

Sibongile Hlomuka
Royal HaskoningDHV
PO Box 867, Gallo Manor, 2052
Tel: 011 798 6000
Fax: 011 798 6010
Email: sibongile.hlomuka@rhdhv.com

Yours sincerely,



Sibongile Hlomuka

08 October 2012

DEA Reference: 14/12/16/3/3/3/61
Our Reference: E02.JNB.000308

Councillor: B.J Mhlanga
Daggakraal Ward 9
Dr. Pixley ka Isaka Seme Local Municipality
Private Bag X9011
Volksrust
2470

Dear Councillor Mhlanga,

ENVIRONMENTAL IMPACT ASSESSMENT AND WASTE MANAGEMENT LICENSE APPLICATION FOR THE UNDERGROUND COAL GASIFICATION PROJECT AND ASSOCIATED INFRASTRUCTURE IN SUPPORT OF CO-FIRING OF GAS AT THE MAJUBA POWER STATION, AMERSFOORT, MPUMALANGA

Notice is hereby given in terms of the National Environmental Management Act, 1998 (Act No 107 of 1998) as amended, Environmental Impact Regulations (2010) as well as the National Environmental Management: Waste Act, 2008 (Act No 59 of 2008) that Eskom Holdings SOC Ltd ('Eskom') has submitted an integrated application for Environmental Authorisation and Waste Management License to the Department of Environmental Affairs (DEA). Eskom intends to undertake a Scoping and EIA study and submit Scoping and Environmental Impact Reports to DEA in support of the proposed project.

The proposed project entails the following:

- Implementation of underground coal gasification (UCG) technology on the farm Roodekopjes 67HS (Portions 1, 2, 3 and remaining extent). UCG is a process whereby coal is converted *in situ* into combustible gas that can be used for power generation. The study area falls within the administrative boundaries of Pixley ka Seme Local Municipality.
- In order to meet the fuel requirements for optimal power generation at the Majuba Power Station, Eskom proposes the use of synthetic gas or syngas (15000 Nm³/hr) produced by the UCG process as a supplementary fuel source within the boilers at the power station. The 15000 Nm³/hr plant will be scaled up to 70000 Nm³/hr.
- Ancillary infrastructure associated with the project on the farm Roodekopjes 67HS include: production and injection wells, monitoring boreholes, gas treatment plant, process and raw water dams, site offices, access roads and electrical infrastructure.
- In addition, a wastewater treatment works on Portion 21 of Bergvliet 65HS and a new service road to be constructed between the entrance to the site office complex on Portion 17 of farm Bergvliet 65HS and Portions 4 and 5 of the farm Rietfontein 66HS before linking up to the UCG site on the borders of Portions 2 and 3 of the farm Roodekopjes 67HS will be included in this study.
- Eskom are also in the process of applying for an Integrated Water Use License (IWULA) from the Department of Water Affairs for the water uses associated with the project.

Please refer to the attached Background Information Document (BID) for more information regarding the project.

Project Background:

An Environmental Scoping Study (ESS) was initiated in 2009 for the UCG pilot project and associated infrastructure including the 40 – 140 MW OCGT demonstration plant and gas treatment plants (DEA Ref 12/12/20/1617). The environmental impacts associated with the project required investigation in compliance with the EIA Regulations (2006) published in Government Notice No. R. 385 to No. R. 387 and read with Section 24 (5) of the National Environmental Management Act - NEMA (Act No 107 of 1998) – as



SSI Engineers and Environmental Consultants (Pty) Ltd
trading as Royal HaskoningDHV

Reg No. 1966/001916/07

PO Box 867, Gallo Manor, 2052, South Africa

T: +27(0)11 798 6000 / F: +27(0)11 798 6005

Email: johannesburg@rhdhv.com

www.rhdhv.co.za

amended). The final Environmental Scoping Report for the project was accepted by the Department of Environmental Affairs (DEA) in March 2010.

Due to the research and development (R&D) nature of the project, detailed engineering information / design hindered the progress of the EIA process, which resulted in a time lapse between the ESS and the EIA study. The applicant (Eskom) was then advised by the DEA to start the EIA study afresh under the EIA Regulations (2010). The project study area has since also been reduced to focus only on the farm Roodekopjes 67HS, Bergvliet 65 HS (Portions 17 & 21) and Rietfontein 66HS (Portions 4 & 5). In the previous ESS the following farms were also included as part of the study area: Rietfontein 66HS (including Klein Rietfontein 117HS); Japtrap 115HS; Palmietspruit 68HS; Tweedepoort 54HS; Koppieskraal 56HS; Bergvliet 65HS; Weiland 59HS and Strydkraal 53HS. The 40 – 140 MW OCGT demonstration plant also does not form part of the scope of the current ESS.

NOTICE OF AVAILABILITY OF THE DRAFT ENVIRONMENTAL SCOPING REPORT FOR PUBLIC REVIEW

All I&APs are hereby notified that the draft Environmental Scoping Report (ESR) will be available for public comment from **22 October 2012 to 07 January 2013**. The draft ESR will summarise key environmental issues identified to date and will be available at the following places:

- Volksrust Public Library, Cnr Joubert & Laingsnek Street (Volksrust)
- Amersfoort Public Library, Cnr Plein & Bree Street (Amersfoort)
- UCG Mine Site Offices, Majuba Colliery, Bergvliet, Amersfoort
- Office of Royal HaskoningDHV, 78 Kalkoen Street, Monument Park (Pretoria)
- Royal HaskoningDHV website (<http://www.rhdhv.co.za/pages/services/environmental/current-projects.php>)

WHO SHOULD YOU CONTACT?

Royal HaskoningDHV is the appointed independent Environmental Assessment Practitioner (EAP), undertaking the required environmental impact assessment and public participation process for the project. To register as an Interested and Affected Party (I&AP) and to obtain more details about the project, please submit your name, contact information and interest in the project on the attached registration and comment form to:

Sibongile Hlomuka
Royal HaskoningDHV
PO Box 867, Gallo Manor, 2052
Tel: 011 798 6000
Fax: 011 798 6010
Email: sibongile.hlomuka@rhdhv.com

Yours sincerely,



Sibongile Hlomuka

08 October 2012

DEA Reference: 14/12/16/3/3/3/61
Our Reference: E02.JNB.000308

Councillor: MS Motho
Daggakraal Ward 10
Dr. Pixley ka Isaka Seme Local Municipality
Private Bag X9011
Volksrust
2470

Dear Councillor Motho,

ENVIRONMENTAL IMPACT ASSESSMENT AND WASTE MANAGEMENT LICENSE APPLICATION FOR THE UNDERGROUND COAL GASIFICATION PROJECT AND ASSOCIATED INFRASTRUCTURE IN SUPPORT OF CO-FIRING OF GAS AT THE MAJUBA POWER STATION, AMERSFOORT, MPUMALANGA

Notice is hereby given in terms of the National Environmental Management Act, 1998 (Act No 107 of 1998) as amended, Environmental Impact Regulations (2010) as well as the National Environmental Management: Waste Act, 2008 (Act No 59 of 2008) that Eskom Holdings SOC Ltd ('Eskom') has submitted an integrated application for Environmental Authorisation and Waste Management License to the Department of Environmental Affairs (DEA). Eskom intends to undertake a Scoping and EIA study and submit Scoping and Environmental Impact Reports to DEA in support of the proposed project.

The proposed project entails the following:

- Implementation of underground coal gasification (UCG) technology on the farm Roodekopjes 67HS (Portions 1, 2, 3 and remaining extent). UCG is a process whereby coal is converted *in situ* into combustible gas that can be used for power generation. The study area falls within the administrative boundaries of Pixley ka Seme Local Municipality.
- In order to meet the fuel requirements for optimal power generation at the Majuba Power Station, Eskom proposes the use of synthetic gas or syngas (15000 Nm³/hr) produced by the UCG process as a supplementary fuel source within the boilers at the power station. The 15000 Nm³/hr plant will be scaled up to 70000 Nm³/hr.
- Ancillary infrastructure associated with the project on the farm Roodekopjes 67HS include: production and injection wells, monitoring boreholes, gas treatment plant, process and raw water dams, site offices, access roads and electrical infrastructure.
- In addition, a wastewater treatment works on Portion 21 of Bergvliet 65HS and a new service road to be constructed between the entrance to the site office complex on Portion 17 of farm Bergvliet 65HS and Portions 4 and 5 of the farm Rietfontein 66HS before linking up to the UCG site on the borders of Portions 2 and 3 of the farm Roodekopjes 67HS will be included in this study.
- Eskom are also in the process of applying for an Integrated Water Use License (IWULA) from the Department of Water Affairs for the water uses associated with the project.

Please refer to the attached Background Information Document (BID) for more information regarding the project.

Project Background:

An Environmental Scoping Study (ESS) was initiated in 2009 for the UCG pilot project and associated infrastructure including the 40 – 140 MW OCGT demonstration plant and gas treatment plants (DEA Ref 12/12/20/1617). The environmental impacts associated with the project required investigation in compliance with the EIA Regulations (2006) published in Government Notice No. R. 385 to No. R. 387 and read with Section 24 (5) of the National Environmental Management Act - NEMA (Act No 107 of 1998) – as



SSI Engineers and Environmental Consultants (Pty) Ltd
trading as Royal HaskoningDHV

Reg No. 1966/001916/07

PO Box 867, Gallo Manor, 2052, South Africa

T: +27(0)11 798 6000 / F: +27(0)11 798 6005

Email: johannesburg@rhdhv.com

www.rhdhv.co.za

amended). The final Environmental Scoping Report for the project was accepted by the Department of Environmental Affairs (DEA) in March 2010.

Due to the research and development (R&D) nature of the project, detailed engineering information / design hindered the progress of the EIA process, which resulted in a time lapse between the ESS and the EIA study. The applicant (Eskom) was then advised by the DEA to start the EIA study afresh under the EIA Regulations (2010). The project study area has since also been reduced to focus only on the farm Roodekopjes 67HS, Bergvliet 65 HS (Portions 17 & 21) and Rietfontein 66HS (Portions 4 & 5). In the previous ESS the following farms were also included as part of the study area: Rietfontein 66HS (including Klein Rietfontein 117HS); Japtrap 115HS; Palmietspruit 68HS; Tweedepoort 54HS; Koppieskraal 56HS; Bergvliet 65HS; Weiland 59HS and Strydkraal 53HS. The 40 – 140 MW OCGT demonstration plant also does not form part of the scope of the current ESS.

NOTICE OF AVAILABILITY OF THE DRAFT ENVIRONMENTAL SCOPING REPORT FOR PUBLIC REVIEW

All I&APs are hereby notified that the draft Environmental Scoping Report (ESR) will be available for public comment from **22 October 2012 to 07 January 2013**. The draft ESR will summarise key environmental issues identified to date and will be available at the following places:

- Volksrust Public Library, Cnr Joubert & Laingsnek Street (Volksrust)
- Amersfoort Public Library, Cnr Plein & Bree Street (Amersfoort)
- UCG Mine Site Offices, Majuba Colliery, Bergvliet, Amersfoort
- Office of Royal HaskoningDHV, 78 Kalkoen Street, Monument Park (Pretoria)
- Royal HaskoningDHV website (<http://www.rhdhv.co.za/pages/services/environmental/current-projects.php>)

WHO SHOULD YOU CONTACT?

Royal HaskoningDHV is the appointed independent Environmental Assessment Practitioner (EAP), undertaking the required environmental impact assessment and public participation process for the project. To register as an Interested and Affected Party (I&AP) and to obtain more details about the project, please submit your name, contact information and interest in the project on the attached registration and comment form to:

Sibongile Hlomuka
Royal HaskoningDHV
PO Box 867, Gallo Manor, 2052
Tel: 011 798 6000
Fax: 011 798 6010
Email: sibongile.hlomuka@rhdhv.com

Yours sincerely,



Sibongile Hlomuka

08 October 2012

DEA Reference: 14/12/16/3/3/3/61
Our Reference: E02.JNB.000308

Councillor: ZE Dlodlu
Daggakraal Ward 11
Dr. Pixley ka Isaka Seme Local Municipality
Private Bag X9011
Volksrust
2470

Dear Councillor Dlodlu,

ENVIRONMENTAL IMPACT ASSESSMENT AND WASTE MANAGEMENT LICENSE APPLICATION FOR THE UNDERGROUND COAL GASIFICATION PROJECT AND ASSOCIATED INFRASTRUCTURE IN SUPPORT OF CO-FIRING OF GAS AT THE MAJUBA POWER STATION, AMERSFOORT, MPUMALANGA

Notice is hereby given in terms of the National Environmental Management Act, 1998 (Act No 107 of 1998) as amended, Environmental Impact Regulations (2010) as well as the National Environmental Management: Waste Act, 2008 (Act No 59 of 2008) that Eskom Holdings SOC Ltd ('Eskom') has submitted an integrated application for Environmental Authorisation and Waste Management License to the Department of Environmental Affairs (DEA). Eskom intends to undertake a Scoping and EIA study and submit Scoping and Environmental Impact Reports to DEA in support of the proposed project.

The proposed project entails the following:

- Implementation of underground coal gasification (UCG) technology on the farm Roodekopjes 67HS (Portions 1, 2, 3 and remaining extent). UCG is a process whereby coal is converted *in situ* into combustible gas that can be used for power generation. The study area falls within the administrative boundaries of Pixley ka Seme Local Municipality.
- In order to meet the fuel requirements for optimal power generation at the Majuba Power Station, Eskom proposes the use of synthetic gas or syngas (15000 Nm³/hr) produced by the UCG process as a supplementary fuel source within the boilers at the power station. The 15000 Nm³/hr plant will be scaled up to 70000 Nm³/hr.
- Ancillary infrastructure associated with the project on the farm Roodekopjes 67HS include: production and injection wells, monitoring boreholes, gas treatment plant, process and raw water dams, site offices, access roads and electrical infrastructure.
- In addition, a wastewater treatment works on Portion 21 of Bergvliet 65HS and a new service road to be constructed between the entrance to the site office complex on Portion 17 of farm Bergvliet 65HS and Portions 4 and 5 of the farm Rietfontein 66HS before linking up to the UCG site on the borders of Portions 2 and 3 of the farm Roodekopjes 67HS will be included in this study.
- Eskom are also in the process of applying for an Integrated Water Use License (IWULA) from the Department of Water Affairs for the water uses associated with the project.

Please refer to the attached Background Information Document (BID) for more information regarding the project.

Project Background:

An Environmental Scoping Study (ESS) was initiated in 2009 for the UCG pilot project and associated infrastructure including the 40 – 140 MW OCGT demonstration plant and gas treatment plants (DEA Ref 12/12/20/1617). The environmental impacts associated with the project required investigation in compliance with the EIA Regulations (2006) published in Government Notice No. R. 385 to No. R. 387 and read with Section 24 (5) of the National Environmental Management Act - NEMA (Act No 107 of 1998) – as



SSI Engineers and Environmental Consultants (Pty) Ltd
trading as Royal HaskoningDHV

Reg No. 1966/001916/07

PO Box 867, Gallo Manor, 2052, South Africa

T: +27(0)11 798 6000 / F: +27(0)11 798 6005

Email: johannesburg@rhdhv.com

www.rhdhv.co.za

amended). The final Environmental Scoping Report for the project was accepted by the Department of Environmental Affairs (DEA) in March 2010.

Due to the research and development (R&D) nature of the project, detailed engineering information / design hindered the progress of the EIA process, which resulted in a time lapse between the ESS and the EIA study. The applicant (Eskom) was then advised by the DEA to start the EIA study afresh under the EIA Regulations (2010). The project study area has since also been reduced to focus only on the farm Roodekopjes 67HS, Bergvliet 65 HS (Portions 17 & 21) and Rietfontein 66HS (Portions 4 & 5). In the previous ESS the following farms were also included as part of the study area: Rietfontein 66HS (including Klein Rietfontein 117HS); Japtrap 115HS; Palmietspruit 68HS; Tweedepoort 54HS; Koppieskraal 56HS; Bergvliet 65HS; Weiland 59HS and Strydkraal 53HS. The 40 – 140 MW OCGT demonstration plant also does not form part of the scope of the current ESS.

NOTICE OF AVAILABILITY OF THE DRAFT ENVIRONMENTAL SCOPING REPORT FOR PUBLIC REVIEW

All I&APs are hereby notified that the draft Environmental Scoping Report (ESR) will be available for public comment from **22 October 2012 to 07 January 2013**. The draft ESR will summarise key environmental issues identified to date and will be available at the following places:

- Volksrust Public Library, Cnr Joubert & Laingsnek Street (Volksrust)
- Amersfoort Public Library, Cnr Plein & Bree Street (Amersfoort)
- UCG Mine Site Offices, Majuba Colliery, Bergvliet, Amersfoort
- Office of Royal HaskoningDHV, 78 Kalkoen Street, Monument Park (Pretoria)
- Royal HaskoningDHV website (<http://www.rhdhv.co.za/pages/services/environmental/current-projects.php>)

WHO SHOULD YOU CONTACT?

Royal HaskoningDHV is the appointed independent Environmental Assessment Practitioner (EAP), undertaking the required environmental impact assessment and public participation process for the project. To register as an Interested and Affected Party (I&AP) and to obtain more details about the project, please submit your name, contact information and interest in the project on the attached registration and comment form to:

Sibongile Hlomuka
Royal HaskoningDHV
PO Box 867, Gallo Manor, 2052
Tel: 011 798 6000
Fax: 011 798 6010
Email: sibongile.hlomuka@rhdhv.com

Yours sincerely,



Sibongile Hlomuka

List of REGISTERED LETTERS

Lys van GEREgistreERDE BRIEWE

(With an insurance option/met 'n versekeringsopsie)



Post Office

Full tracking and tracing/Volledige volg en spoor

Name and address of sender
Naam en adres van afsender

SS1 - ENGINEERS + ENVIRONMENTAL
P.O. Box 967
GALLO MANOR
2052

Enquiries/Navrae
Toll-free number
Tolvry nommer

0800 111 502

No	Name and address of addressee Naam en adres van geadresseerde	Insured amount Versekerde bedrag	Insurance fee Versekeringsgeld	Postage Posgeld	Service fee Diensgeld	Affix Track and Trace customer copy Plak Volg-en-Spoor klientafskrif
1	COUNCILLOR T.A. MAZIBUKO - DR. PIXLEY SEME LOCAL MUN - PRIVATE BAG 9011 - VOLKSRUST					REGISTERED LETTER (with a domestic insurance option) ShareCall 0800 111 502 www.sapo.co.za RD 791 300 324 ZA
2	COUNCILLOR B.G. MAVISO - PIXLEY SEME LOCAL MUN - PRIVATE BAG 9011 - VOLKSRUST					CUSTOMER COPY 301028R REGISTERED LETTER (with a domestic insurance option) ShareCall 0800 111 502 www.sapo.co.za RD 791 300 338 ZA
3	COUNCILLOR N.E. HLAKATSE - PIXLEY SEME LOCAL MUN - PRIVATE BAG 9011 - VOLKSRUST					CUSTOMER COPY 301028R REGISTERED LETTER (with a domestic insurance option) ShareCall 0800 111 502 www.sapo.co.za RD 791 300 341 ZA
4	COUNCILLOR D.E. JAGER - PIXLEY SEME - PRIVATE BAG 9011 VOLKSRUST					REGISTERED LETTER (with a domestic insurance option) ShareCall 0800 111 502 www.sapo.co.za RD 791 300 355 ZA
5	COUNCILLOR S.J. MAZIBUKO - PIXLEY SEME LOCAL MUN - PRIVATE BAG 9011 - VOLKSRUST					CUSTOMER COPY 301028R REGISTERED LETTER (with a domestic insurance option) ShareCall 0800 111 502 www.sapo.co.za RD 791 300 165 ZA
6	COUNCILLOR E.M. THAKALA - PIXLEY SEME LOCAL MUN - PRIVATE BAG 9011 - VOLKSRUST					CUSTOMER COPY 301028R REGISTERED LETTER (with a domestic insurance option) ShareCall 0800 111 502 www.sapo.co.za RD 791 300 179 ZA
7	COUNCILLOR D.T. SHABANGH - PIXLEY SEME LOCAL MUN - PRIVATE BAG 9011 - VOLKSRUST					REGISTERED LETTER (with a domestic insurance option) ShareCall 0800 111 502 www.sapo.co.za RD 791 300 148 ZA
8	COUNCILLOR M.S. MOTHO - PIXLEY SEME LOCAL MUN - PRIVATE BAG 9011 - VOLKSRUST					CUSTOMER COPY 301028R REGISTERED LETTER (with a domestic insurance option) ShareCall 0800 111 502 www.sapo.co.za RD 791 300 151 ZA
9	COUNCILLOR Z.E. DLWOLA - PIXLEY SEME LOCAL MUN - PRIVATE BAG 9011 - VOLKSRUST					CUSTOMER COPY 301028R REGISTERED LETTER (with a domestic insurance option) ShareCall 0800 111 502 www.sapo.co.za RD 791 300 125 ZA
10	COUNCILLOR B.V. MHLANSA - PIXLEY SEME LOCAL MUN - PRIVATE BAG 9011 - VOLKSRUST					CUSTOMER COPY 301028R REGISTERED LETTER (with a domestic insurance option) ShareCall 0800 111 502 www.sapo.co.za RD 791 300 134 ZA
	Total	R	R	R	R	

Number of letters posted
Getal briewe gepos

10

Signature of client
Handtekening van klient

Signature of accepting officer
Handtekening van aanneembeampte

The value of the contents of these letters is as indicated and compensation is not payable for a letter received unconditionally. Compensation is limited to R100,00. No compensation is payable without documentary proof. Optional insurance of up to R2 000,00 is available and applies to domestic registered letters only.

Die waarde van die inhoud van hierdie briewe is soos aangedui en vergoeding sal nie betaal word vir 'n brief wat sonder voorbehoud ontvang word nie. Vergoeding is beperk tot R100,00. Geen vergoeding is sonder dokumentêre bewys betaalbaar nie. Opsionele versekering van tot R2 000,00 is beskikbaar en is slegs op in-landse geregistreerde briewe van toepassing.



OTHER KEY STAKEHOLDERS & I&APS

Kalele, Phyllis

From: Govender, Seshni
Sent: Tuesday, October 09, 2012 2:10 PM
To: bbagri@vodamail.co.za; 0823854544@vodamail.co.za; sharon.clark@bhpbilliton.com; Bongane.Ntiwane@dpw.gov.za; wingoodscheepmoor@cybertrade.co.za; rossf@dwaf.mpu.gov.za; jhayes@anglocoal.co.za; shlatshwayo@mpg.gov.za; rnkambule@nel.mpu.gov.za; rockrest@vodamail.co.za; natie.vlr@doria.co.za; nlesufi@bullion.org.za; meulenbeldp@dwaf.gov.za; seccp@earthlife.org.za; ngobe@mpg.gov.za; vniekerkj@dwaf.gov.za; patn@mpg.gov.za; pnortje@twkagri.com; d.zoekop@lando.co.za; careens@social.mpu.gov.za; hvanlogg@absamail.co.za; donnievanzyl@gmail.com; vermaakc@dwaf.gov.za; agriland@nda.agric.za
Cc: Reddy, Prashika
Subject: FW: ENVIRONMENTAL IMPACT ASSESSMENT AND WASTE MANAGEMENT LICENSE APPLICATION FOR THE UNDERGROUND COAL GASIFICATION PROJECT AND ASSOCIATED INFRASTRUCTURE IN SUPPORT OF CO-FIRING OF GAS AT THE MAJUBA POWER STATION, AMERSFOORT, MPUMALANGA
Attachments: Letters to I&APs_08_10_12.pdf; Letters to IAPs_08_10_12_afr.pdf; BID-UCG Draft_07_10_12_Final_Afr.pdf; BID-UCG_05_10_12_Final_Eng.pdf; Comment Reg Form_01_10_12_afr_Final.pdf; Comment & Reg Form_01_10_12_eng_Final.pdf



www.rhdhv.co.za

09 October 2012

Dear Interested and Affected Parties (I&APs)

ENVIRONMENTAL IMPACT ASSESSMENT AND WASTE MANAGEMENT LICENSE APPLICATION FOR THE UNDERGROUND COAL GASIFICATION PROJECT AND ASSOCIATED INFRASTRUCTURE IN SUPPORT OF CO-FIRING OF GAS AT THE MAJUBA POWER STATION, AMERSFOORT, MPUMALANGA

Notice is hereby given in terms of the National Environmental Management Act, 1998 (Act No 107 of 1998) as amended, Environmental Impact Regulations (2010) as well as the National Environmental Management: Waste Act, 2008 (Act No 59 of 2008) that Eskom Holdings SOC Ltd ('Eskom') has submitted an integrated application for Environmental Authorisation and Waste Management License to the Department of Environmental Affairs (DEA). Eskom intends to undertake a Scoping and EIA study and submit Scoping and Environmental Impact Reports to DEA in support of the proposed project.

The proposed project entails the following:

- Implementation of underground coal gasification (UCG) technology on the farm Roodekopjes 67HS (Portions 1, 2, 3 and remaining extent). UCG is a process whereby coal is converted *in situ* into combustible gas that can be used for power generation. The study area falls within the administrative boundaries of Pixley ka Seme Local Municipality.

- In order to meet the fuel requirements for optimal power generation at the Majuba Power Station, Eskom proposes the use of synthetic gas or syngas (15000 Nm³/hr) produced by the UCG process as a supplementary fuel source within the boilers at the power station. The 15000 Nm³/hr plant will be scaled up to 70000 Nm³/hr.
- Ancillary infrastructure associated with the project on the farm Roodekopjes 67HS include: production and injection wells, monitoring boreholes, gas treatment plant, process and raw water dams, site offices, access roads and electrical infrastructure.
- In addition, a wastewater treatment works on Portion 21 of Bergvliet 65HS and a new service road to be constructed between the entrance to the site office complex on Portion 17 of farm Bergvliet 65HS and Portions 4 and 5 of the farm Rietfontein 66HS before linking up to the UCG site on the borders of Portions 2 and 3 of the farm Roodekopjes 67HS will be included in this study.
- Eskom are also in the process of applying for an Integrated Water Use License (IWULA) from the Department of Water Affairs for the water uses associated with the project.

All I&APs are hereby notified that the draft Environmental Scoping Report (ESR) will be available for public comment from 22 October 2012 to 07 January 2013.

WHO SHOULD YOU CONTACT?

Royal HaskoningDHV is the appointed independent Environmental Assessment Practitioner (EAP), undertaking the required environmental impact assessment and public participation process for the project. To register as an Interested and Affected Party (I&AP) and to obtain more details about the project, please submit your name, contact information and interest in the project on the attached registration and comment form to:

Sibongile Hlomuka
Royal HaskoningDHV
PO Box 867, Gallo Manor, 2052
Tel: 011 798 6000
Fax: 011 798 6010
Email: sibongile.hlomuka@rhdhv.com

Yours sincerely,

Sibongile Hlomuka