

**SCREENING REPORT FOR AN ENVIRONMENTAL AUTHORIZATION AS
REQUIRED BY THE 2014 EIA REGULATIONS – PROPOSED SITE
ENVIRONMENTAL SENSITIVITY**

EIA Reference number: WC 30/5/1/1/3/2/1/10376 PR

Project name: Prospecting Right

Project title: Farm Pompies Hoek 63

Date screening report generated: 22/08/2021 21:25:09

Applicant: Orren Capital (Pty) Ltd

Compiler: TPR Mining Resources (Pty) Ltd

Compiler signature:
.....

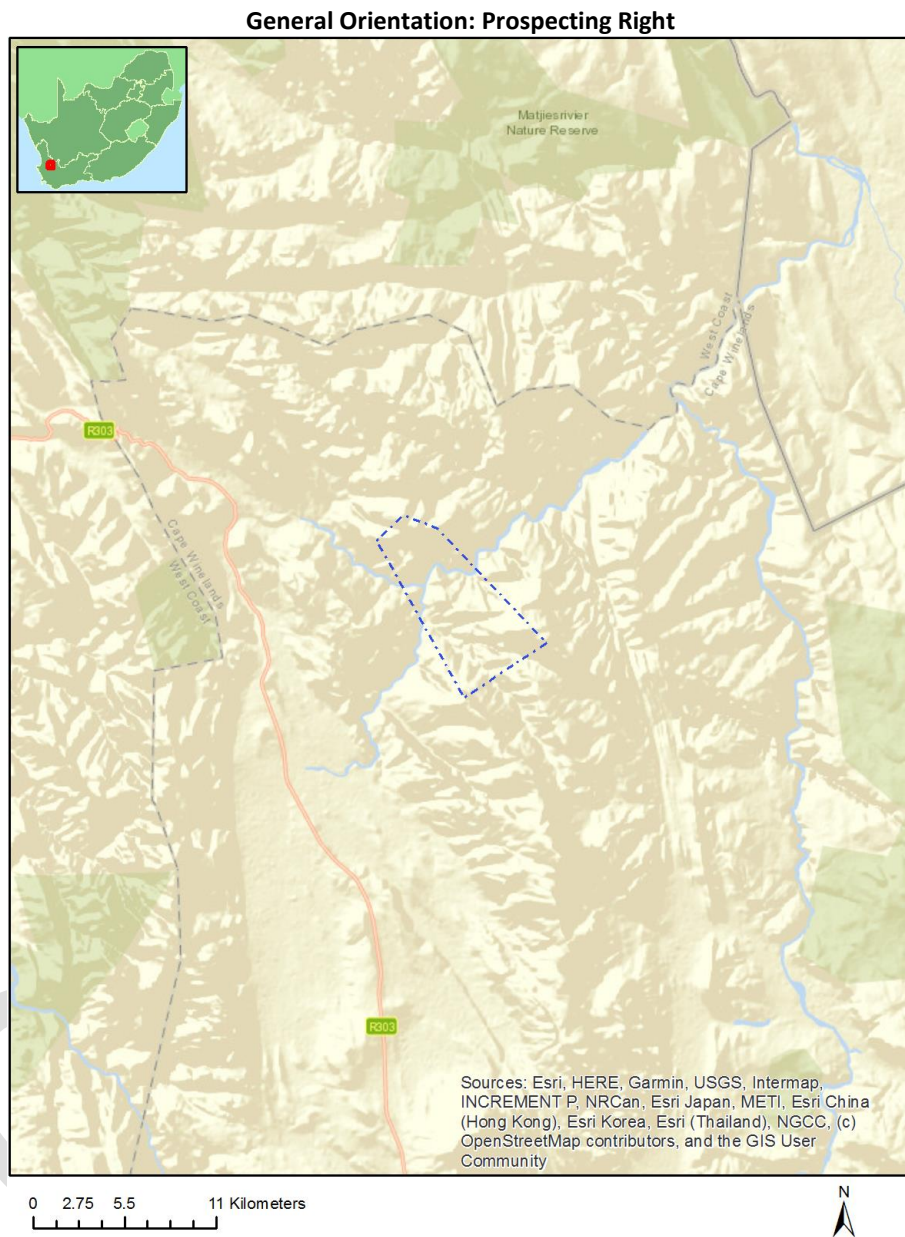
Application Category: Mining|Prospecting rights

Table of Contents

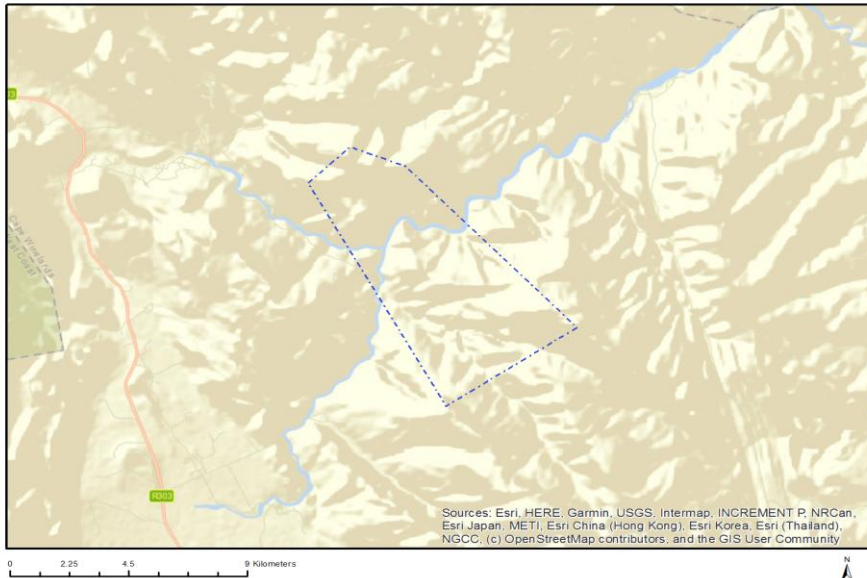
Proposed Project Location	3
Orientation map 1: General location	3
Map of proposed site and relevant area(s)	4
Cadastral details of the proposed site	4
Wind and Solar developments with an approved Environmental Authorisation or applications under consideration within 30 km of the proposed area	4
Environmental Management Frameworks relevant to the application	4
Environmental screening results and assessment outcomes	5
Relevant development incentives, restrictions, exclusions or prohibitions	5
Map indicating proposed development footprint within applicable development incentive, restriction, exclusion or prohibition zones	6
Proposed Development Area Environmental Sensitivity	6
Specialist assessments identified	7
Results of the environmental sensitivity of the proposed area	9
MAP OF RELATIVE AGRICULTURE THEME SENSITIVITY	9
MAP OF RELATIVE ANIMAL SPECIES THEME SENSITIVITY	10
MAP OF RELATIVE AQUATIC BIODIVERSITY THEME SENSITIVITY	11
MAP OF RELATIVE ARCHAEOLOGICAL AND CULTURAL HERITAGE THEME SENSITIVITY	12
MAP OF RELATIVE CIVIL AVIATION THEME SENSITIVITY	13
MAP OF RELATIVE DEFENCE THEME SENSITIVITY	14
MAP OF RELATIVE PALEONTOLOGY THEME SENSITIVITY	15
MAP OF RELATIVE PLANT SPECIES THEME SENSITIVITY	16
MAP OF RELATIVE TERRESTRIAL BIODIVERSITY THEME SENSITIVITY	18

Proposed Project Location

Orientation map 1: General location



Map of proposed site and relevant area(s)



Cadastral details of the proposed site

Property details:

No	Farm Name	Farm/ Erf No	Portion	Latitude	Longitude	Property Type
1	TWEE RIVIERS DRIFT	62	0	32°40'27.83S	19°16'26.3E	Farm
2	POMPIES HOEK	63	0	32°42'31.68S	19°19'40.27E	Farm
3	POMPIES HOEK	63	0	32°42'31.68S	19°19'40.27E	Farm Portion
4	TWEE RIVIERS DRIFT	62	0	32°39'46.93S	19°16'35.26E	Farm Portion

Development footprint¹ vertices:
No development footprint(s) specified.

Wind and Solar developments with an approved Environmental Authorisation or applications under consideration within 30 km of the proposed area

No nearby wind or solar developments found.

Environmental Management Frameworks relevant to the application

¹ “development footprint”, means the area within the site on which the development will take place and includes all ancillary developments for example roads, power lines, boundary walls, paving etc. which require vegetation clearance or which will be disturbed and for which the application has been submitted.

No intersections with EMF areas found.

Environmental screening results and assessment outcomes

The following sections contain a summary of any development incentives, restrictions, exclusions or prohibitions that apply to the proposed development site as well as the most environmental sensitive features on the site based on the site sensitivity screening results for the application classification that was selected. The application classification selected for this report is:

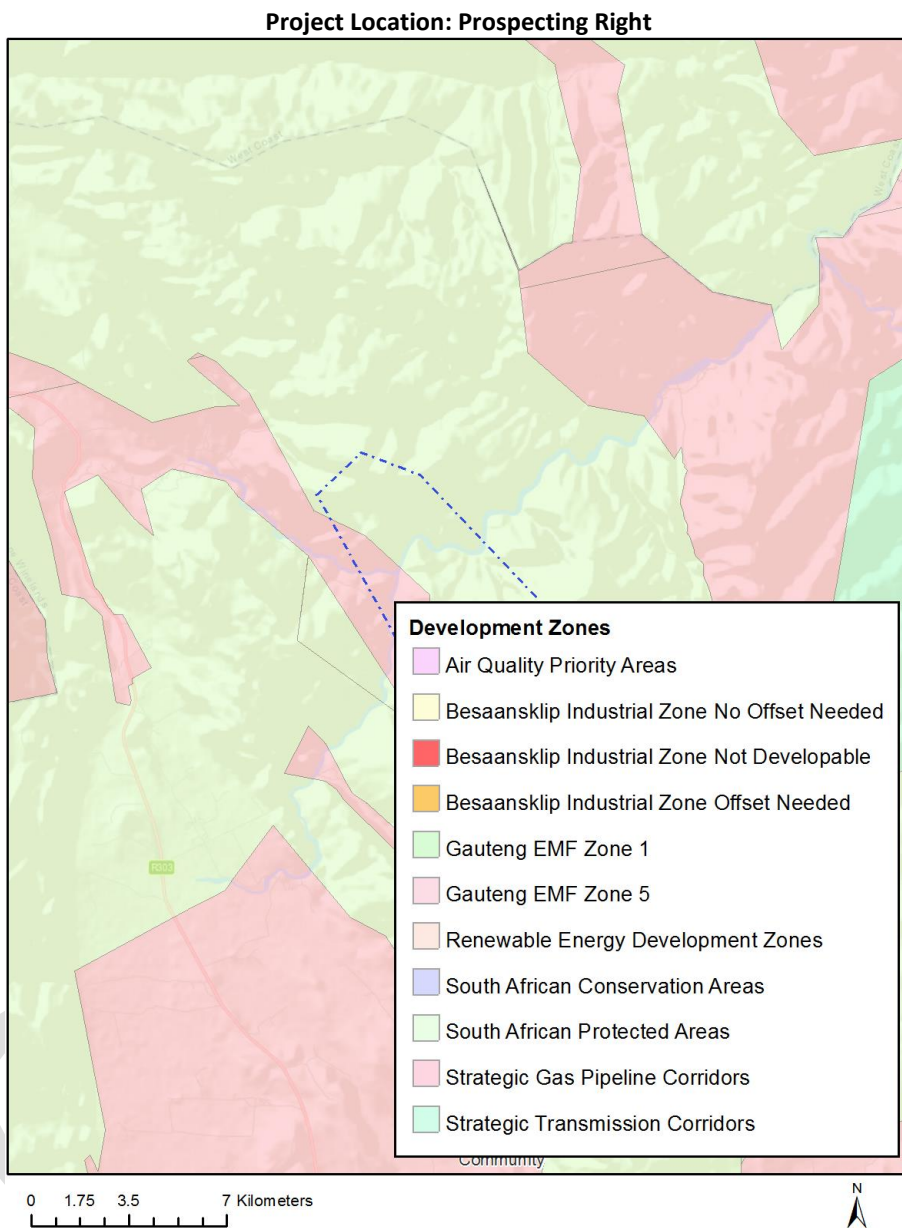
Mining | Prospecting rights.

Relevant development incentives, restrictions, exclusions or prohibitions

The following development incentives, restrictions, exclusions or prohibitions and their implications that apply to this site are indicated below.

Incentive, restriction or prohibition	Implication
Strategic Transmission Corridor- Central corridor	https://screening.environment.gov.za/ScreeningDownloads/DevelopmentZones/Combined_EGI.pdf
Strategic Gas Pipeline Corridors -Phase 1a & 1b: Saldanha to Ankerlig and Saldanha to Mossel Bay	https://screening.environment.gov.za/ScreeningDownloads/DevelopmentZones/Combined_GAS.pdf
South African Protected Areas	https://screening.environment.gov.za/ScreeningDownloads/DevelopmentZones/SAPAD_OR_2021_Q1_Metadata.pdf

Map indicating proposed development footprint within applicable development incentive, restriction, exclusion or prohibition zones



Proposed Development Area Environmental Sensitivity

The following summary of the development site environmental sensitivities is identified. Only the highest environmental sensitivity is indicated. The footprint environmental sensitivities for the proposed development footprint as identified, are indicative only and must be verified on site by a suitably qualified person before the specialist assessments identified below can be confirmed.

Theme	Very High sensitivity	High sensitivity	Medium sensitivity	Low sensitivity
Agriculture Theme				X
Animal Species Theme		X		

Aquatic Biodiversity Theme	X			
Archaeological and Cultural Heritage Theme	X			
Civil Aviation Theme				X
Defence Theme				X
Paleontology Theme	X			
Plant Species Theme			X	
Terrestrial Biodiversity Theme	X			

Specialist assessments identified

Based on the selected classification, and the environmental sensitivities of the proposed development footprint, the following list of specialist assessments have been identified for inclusion in the assessment report. It is the responsibility of the EAP to confirm this list and to motivate in the assessment report, the reason for not including any of the identified specialist study including the provision of photographic evidence of the site situation.

N o	Specialist assessment	Assessment Protocol
1	Agricultural Impact Assessment	https://screening.environment.gov.za/ScreeningDownloads/AssessmentProtocols/Gazetted_General_Agriculture_Assessment_Protocols.pdf
2	Archaeological and Cultural Heritage Impact Assessment	https://screening.environment.gov.za/ScreeningDownloads/AssessmentProtocols/Gazetted_General_Requirement_Assessment_Protocols.pdf
3	Palaeontology Impact Assessment	https://screening.environment.gov.za/ScreeningDownloads/AssessmentProtocols/Gazetted_General_Requirement_Assessment_Protocols.pdf
4	Terrestrial Biodiversity Impact Assessment	https://screening.environment.gov.za/ScreeningDownloads/AssessmentProtocols/Gazetted_Terrestrial_Biodiversity_Assessment_Protocols.pdf
5	Aquatic Biodiversity Impact Assessment	https://screening.environment.gov.za/ScreeningDownloads/AssessmentProtocols/Gazetted_Aquatic_Biodiversity_Assessment_Protocols.pdf
6	Noise Impact Assessment	https://screening.environment.gov.za/ScreeningDownloads/AssessmentProtocols/Gazetted_Noise_Impacts_Assessment_Protocol.pdf

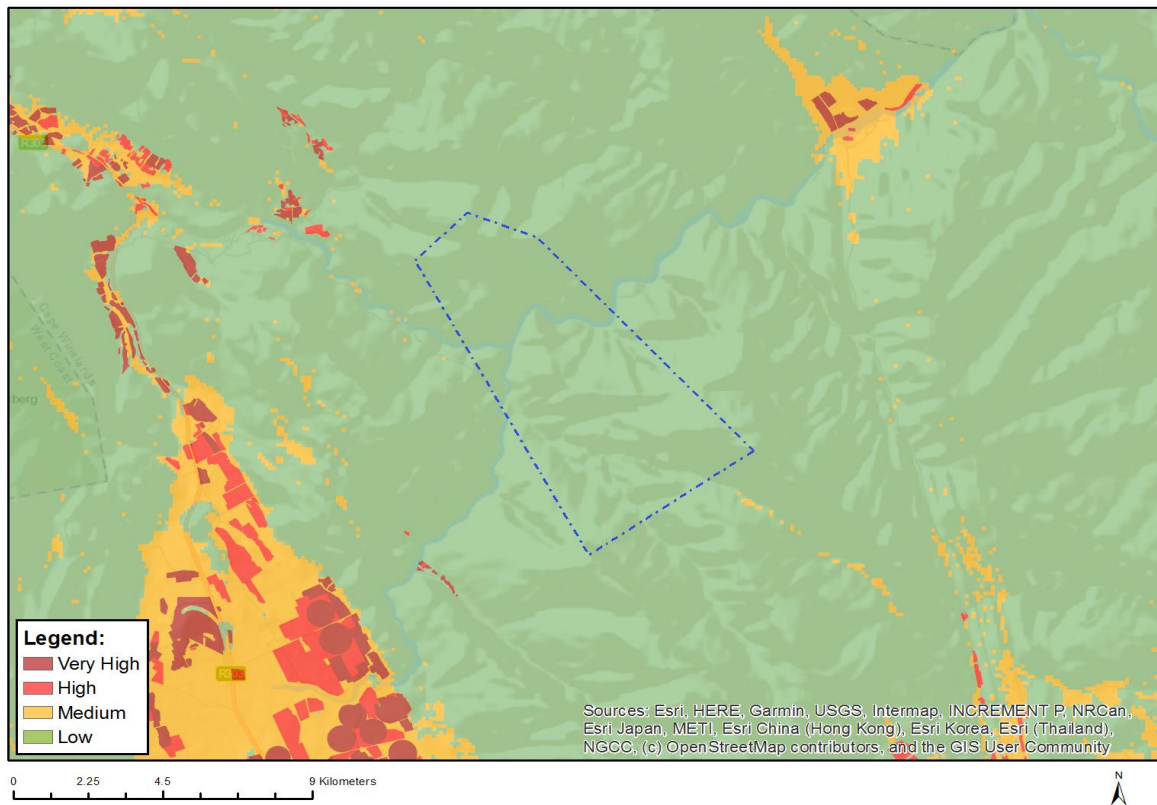
	ment	
7	Radioactivity Impact Assessment	https://screening.environment.gov.za/ScreeningDownloads/AssessmentProtocols/Gazetted_General_Requirement_Assessment_Protocols.pdf
8	Plant Species Assessment	https://screening.environment.gov.za/ScreeningDownloads/AssessmentProtocols/Gazetted_Plant_Species_Assessment_Protocols.pdf
9	Animal Species Assessment	https://screening.environment.gov.za/ScreeningDownloads/AssessmentProtocols/Gazetted_Animal_Species_Assessment_Protocols.pdf

OFFICIAL

Results of the environmental sensitivity of the proposed area.

The following section represents the results of the screening for environmental sensitivity of the proposed site for relevant environmental themes associated with the project classification. It is the duty of the EAP to ensure that the environmental themes provided by the screening tool are comprehensive and complete for the project. Refer to the disclaimer.

MAP OF RELATIVE AGRICULTURE THEME SENSITIVITY

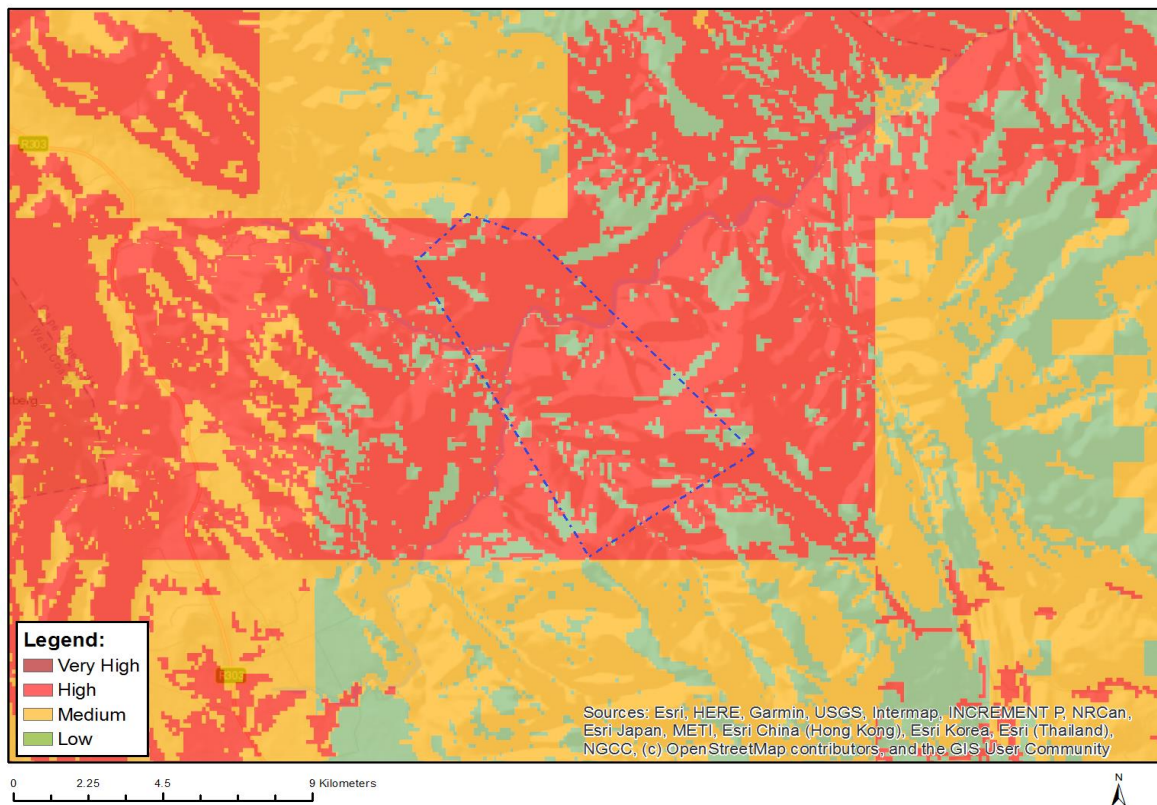


Very High sensitivity	High sensitivity	Medium sensitivity	Low sensitivity
			X

Sensitivity Features:

Sensitivity	Feature(s)
Low	Land capability;01. Very low/02. Very low/03. Low-Very low/04. Low-Very low/05. Low

MAP OF RELATIVE ANIMAL SPECIES THEME SENSITIVITY



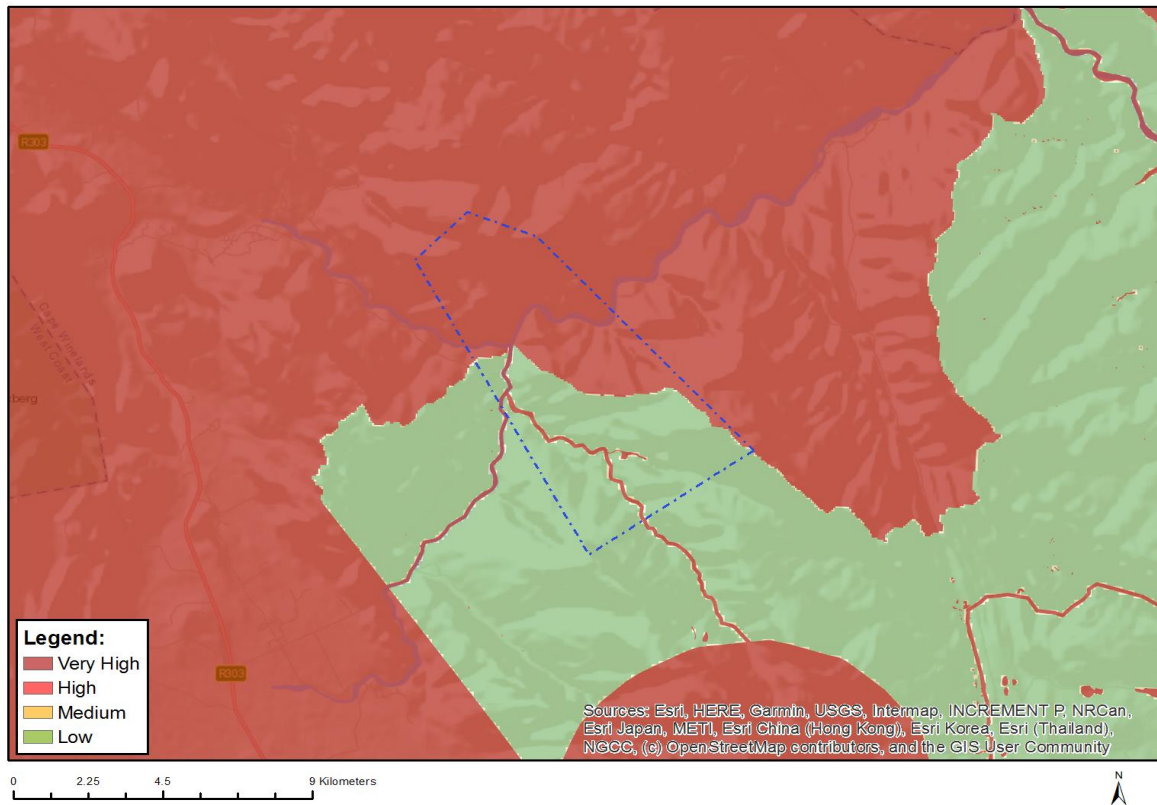
Where only a sensitive plant unique number or sensitive animal unique number is provided in the screening report and an assessment is required, the environmental assessment practitioner (EAP) or specialist is required to email SANBI at eiadatarequests@sanbi.org.za listing all sensitive species with their unique identifiers for which information is required. The name has been withheld as the species may be prone to illegal harvesting and must be protected. SANBI will release the actual species name after the details of the EAP or specialist have been documented.

Very High sensitivity	High sensitivity	Medium sensitivity	Low sensitivity
	X		

Sensitivity Features:

Sensitivity	Feature(s)
High	Aves-Aquila verreauxii
High	Aves-Circus maurus
Low	Low sensitivity
Medium	Aves-Aquila verreauxii

MAP OF RELATIVE AQUATIC BIODIVERSITY THEME SENSITIVITY

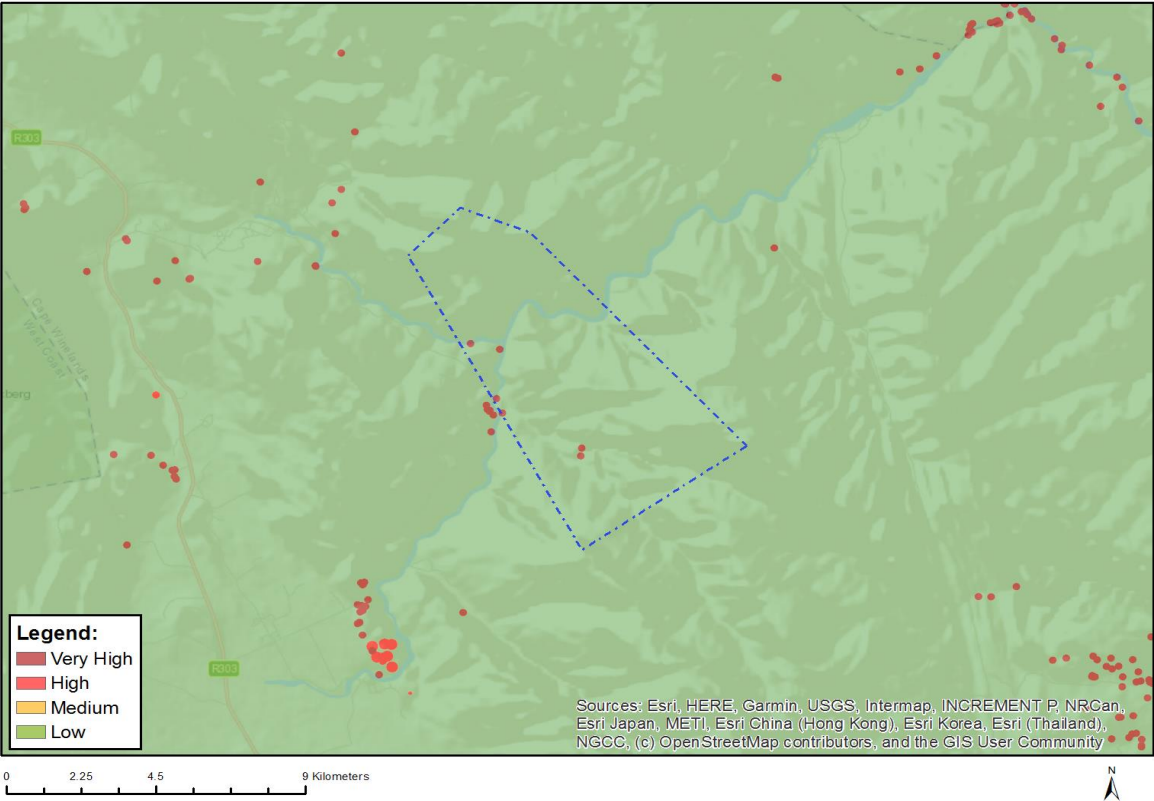


Very High sensitivity	High sensitivity	Medium sensitivity	Low sensitivity
X			

Sensitivity Features:

Sensitivity	Feature(s)
Low	Low sensitivity
Very High	Aquatic CBAs
Very High	Rivers
Very High	Wetlands and Estuaries
Very High	Freshwater ecosystem priority area quinary catchments

MAP OF RELATIVE ARCHAEOLOGICAL AND CULTURAL HERITAGE THEME SENSITIVITY

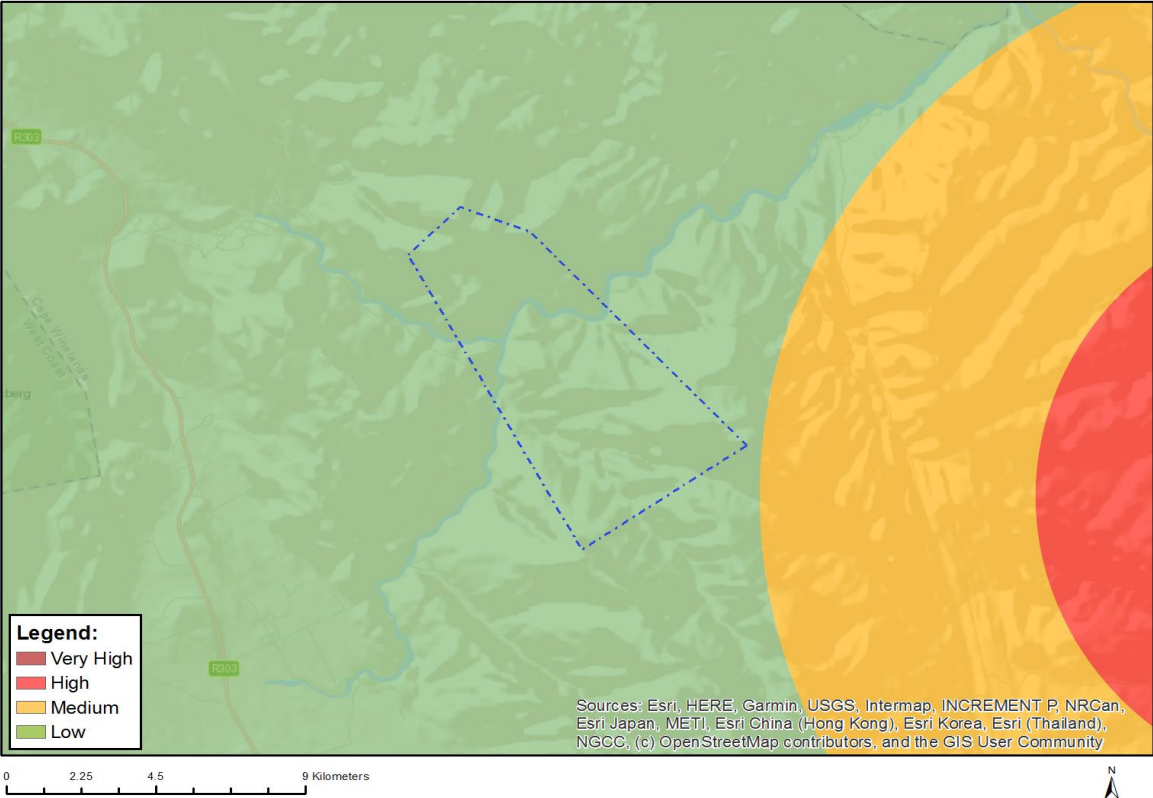


Very High sensitivity	High sensitivity	Medium sensitivity	Low sensitivity
X			

Sensitivity Features:

Sensitivity	Feature(s)
Low	Low sensitivity
Very High	Within 100m of an Ungraded Heritage site

MAP OF RELATIVE CIVIL AVIATION THEME SENSITIVITY

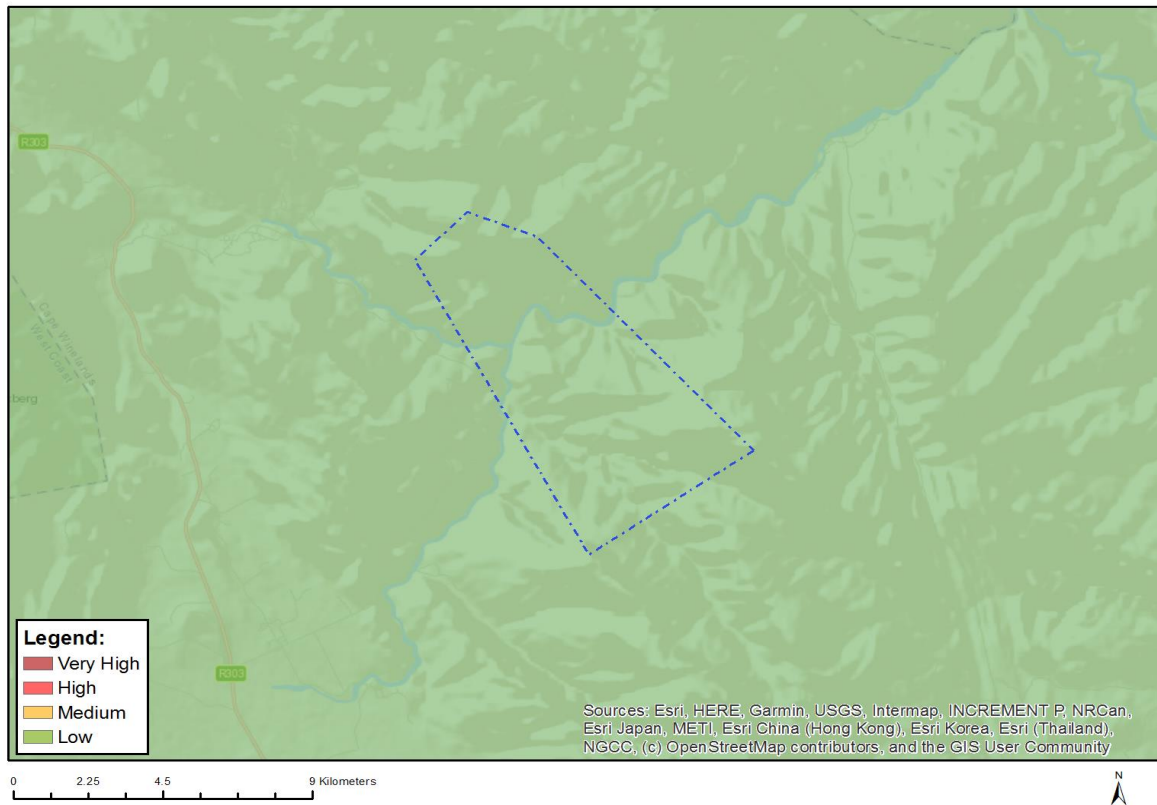


Very High sensitivity	High sensitivity	Medium sensitivity	Low sensitivity
			X

Sensitivity Features:

Sensitivity	Feature(s)
Low	Low sensitivity

MAP OF RELATIVE DEFENCE THEME SENSITIVITY

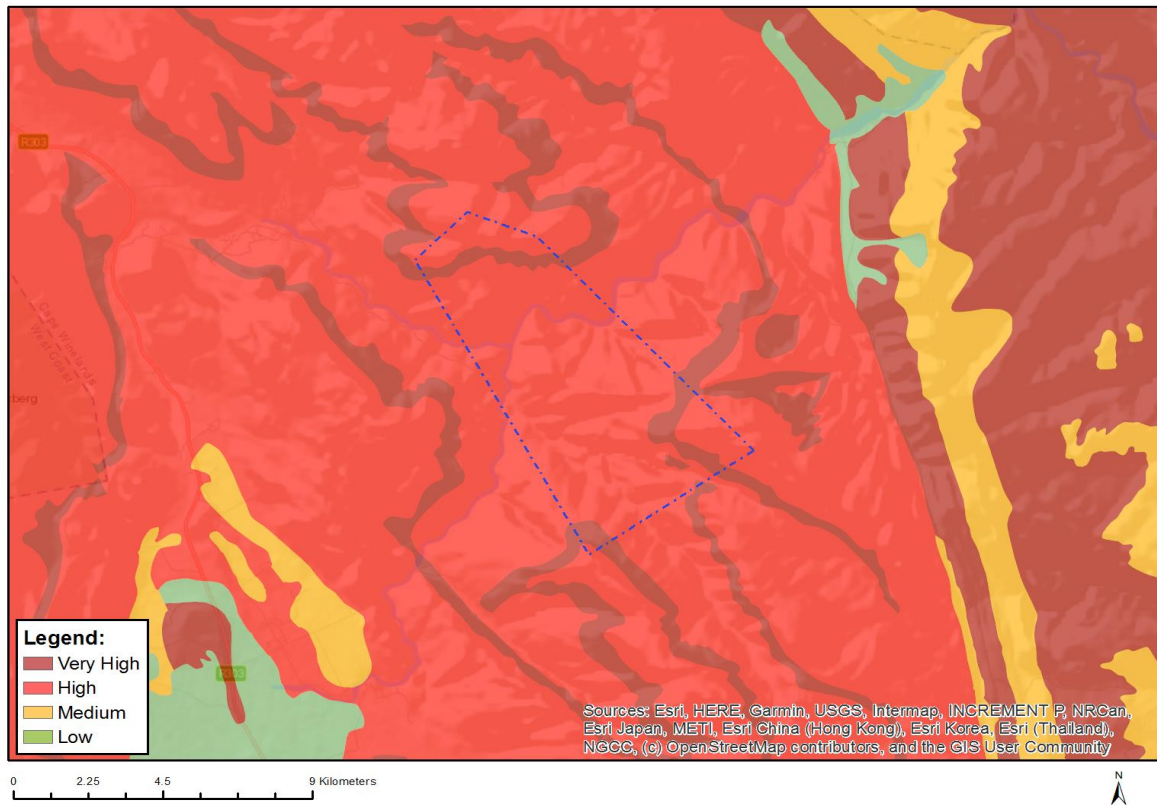


Very High sensitivity	High sensitivity	Medium sensitivity	Low sensitivity
			X

Sensitivity Features:

Sensitivity	Feature(s)
Low	Low Sensitivity

MAP OF RELATIVE PALEONTOLOGY THEME SENSITIVITY

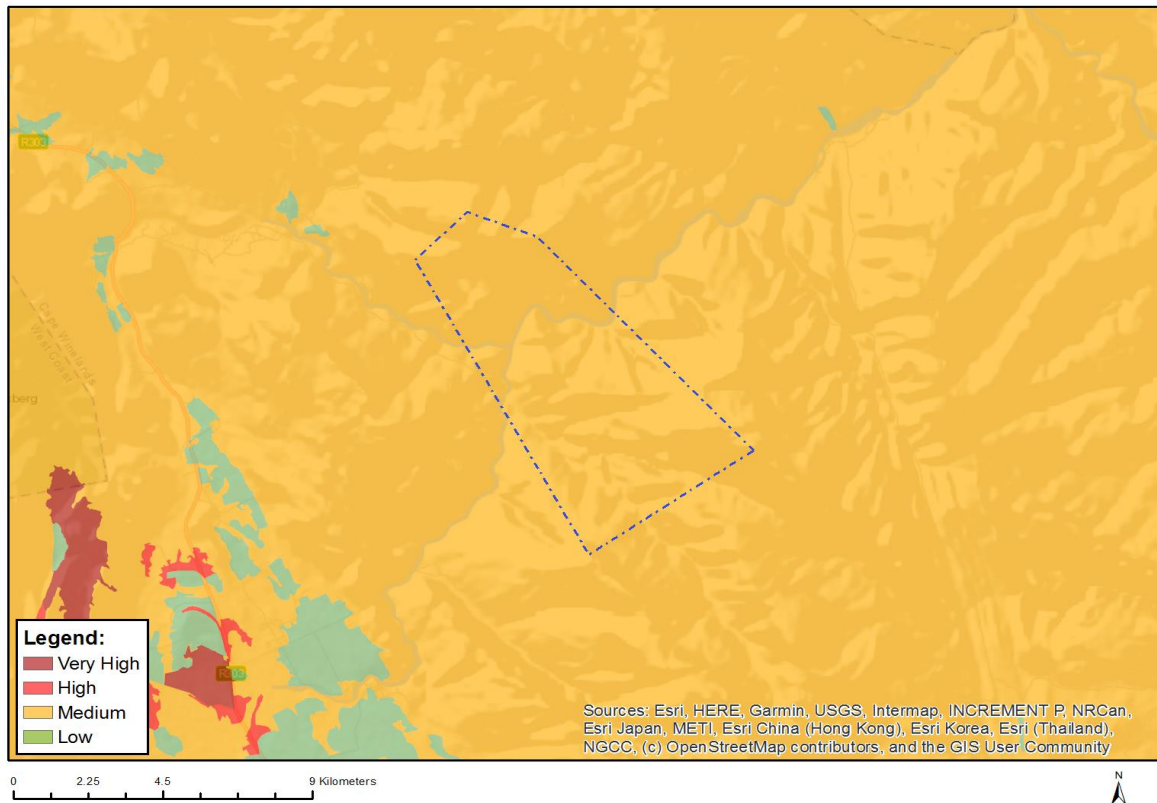


Very High sensitivity	High sensitivity	Medium sensitivity	Low sensitivity
X			

Sensitivity Features:

Sensitivity	Feature(s)
High	Features with a High paleontological sensitivity
Very High	Features with a Very High paleontological sensitivity

MAP OF RELATIVE PLANT SPECIES THEME SENSITIVITY



Where only a sensitive plant unique number or sensitive animal unique number is provided in the screening report and an assessment is required, the environmental assessment practitioner (EAP) or specialist is required to email SANBI at eiadatarequests@sanbi.org.za listing all sensitive species with their unique identifiers for which information is required. The name has been withheld as the species may be prone to illegal harvesting and must be protected. SANBI will release the actual species name after the details of the EAP or specialist have been documented.

Very High sensitivity	High sensitivity	Medium sensitivity	Low sensitivity
		X	

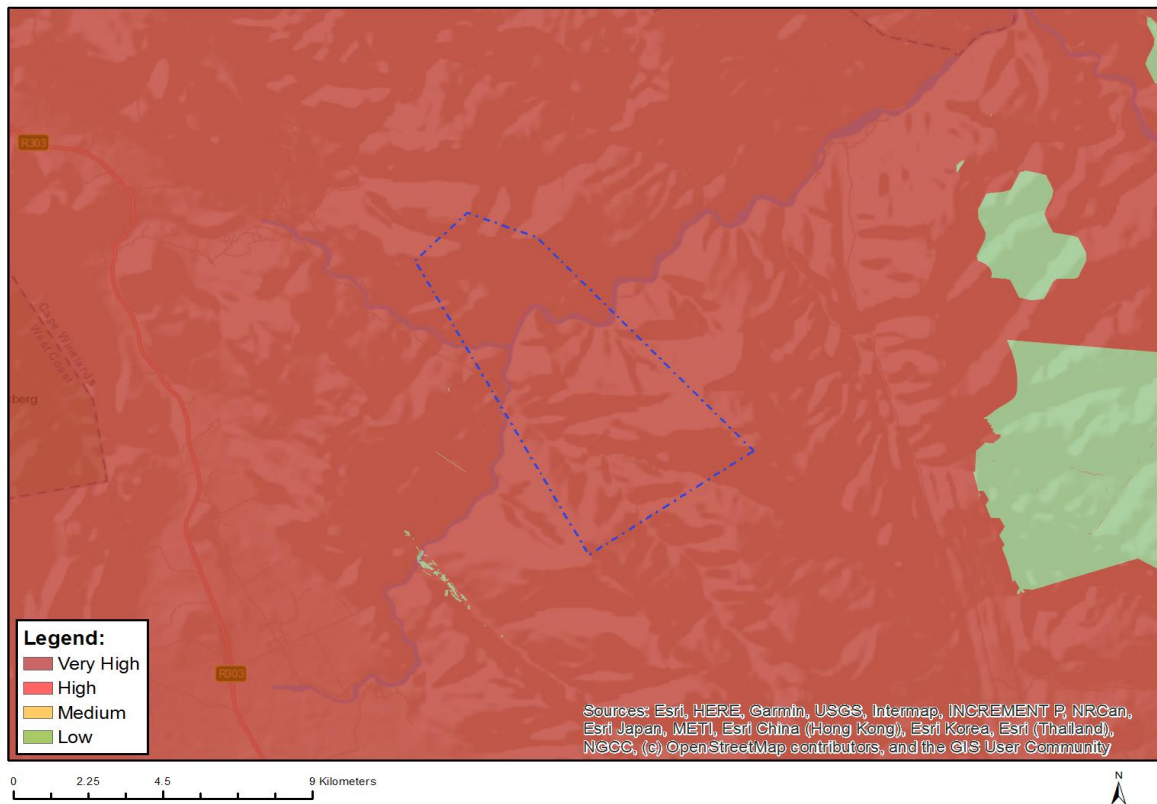
Sensitivity Features:

Sensitivity	Feature(s)
Medium	Lampranthus antonii
Medium	Psoralea tenuissima
Medium	Aspalathus lanifera
Medium	Aspalathus tridentata subsp. fragilis
Medium	Brunia compacta
Medium	Leucadendron bonum
Medium	Leucadendron chamaelea
Medium	Leucadendron sericeum
Medium	Leucospermum catherinae
Medium	Protea restionifolia
Medium	Spatalla caudata
Medium	Serruria millefolia
Medium	Phyllopodium caespitosum
Medium	Phyllopodium viscidissimum
Medium	Trieneea elsiae

Medium	<i>Trieneea schlechteri</i>
Medium	<i>Manulea juncea</i>
Medium	<i>Selago dregeana</i>
Medium	<i>Pentameris horrida</i>
Medium	<i>Anthospermum esterhuysenianum</i> var. <i>hirsutum</i>
Medium	<i>Hesperantha cedarmontana</i>
Medium	Sensitive species 1053
Medium	<i>Geissorhiza ciliatula</i>
Medium	<i>Geissorhiza unifolia</i>
Medium	Sensitive species 806
Medium	<i>Erica aspalathoides</i>
Medium	<i>Erica eriophoros</i>
Medium	<i>Erica marlothii</i>
Medium	<i>Erica rusticula</i>
Medium	<i>Erica lateriflora</i>
Medium	<i>Erica caprina</i>
Medium	Sensitive species 231
Medium	Sensitive species 731
Medium	<i>Ficinia cedarbergensis</i>
Medium	<i>Cannomois aristata</i>
Medium	<i>Anthochortus singularis</i>
Medium	<i>Restio durus</i>
Medium	<i>Restio cedarbergensis</i>
Medium	<i>Restio parthenocarpus</i>
Medium	<i>Askidiosperma insigne</i>
Medium	Sensitive species 848
Medium	Sensitive species 459
Medium	Sensitive species 263
Medium	Sensitive species 624
Medium	Sensitive species 373
Medium	<i>Disperis bolusiana</i> subsp. <i>macrocoris</i>
Medium	<i>Heliophila cedarbergensis</i>
Medium	<i>Metalasia juniperoides</i>
Medium	<i>Amphiglossa susannae</i>
Medium	<i>Oligothrix gracilis</i>
Medium	Sensitive species 245
Medium	<i>Zyrphelis levis</i>
Medium	<i>Ursinia subflosculosa</i>
Medium	<i>Haplocarpha parvifolia</i>
Medium	<i>Senecio umbricola</i>
Medium	<i>Cotula andreae</i>
Medium	Sensitive species 676
Medium	<i>Troglophyton elsiae</i>
Medium	<i>Agathosma bathii</i>
Medium	<i>Agathosma esterhuyseniae</i>
Medium	<i>Agathosma insignis</i>
Medium	<i>Agathosma longicornu</i>
Medium	<i>Sheilantha pubens</i>
Medium	<i>Acmadenia matroosbergensis</i>
Medium	Sensitive species 522
Medium	Sensitive species 1257
Medium	Sensitive species 798
Medium	<i>Phiambolia hallii</i>
Medium	<i>Phiambolia franciscii</i>
Medium	<i>Lampranthus glaucus</i>
Medium	<i>Ophioglossum bergianum</i>
Medium	Sensitive species 1209
Medium	Sensitive species 1107
Medium	<i>Heliophila elata</i>
Medium	<i>Perdicium capense</i>

Medium	Sensitive species 732
Medium	Caesia sabulosa

MAP OF RELATIVE TERRESTRIAL BIODIVERSITY THEME SENSITIVITY



Very High sensitivity	High sensitivity	Medium sensitivity	Low sensitivity
X			

Sensitivity Features:

Sensitivity	Feature(s)
Very High	Critical biodiversity area 1
Very High	Ecological support area 2
Very High	FEPA Subcatchments
Very High	Sederberg Mountain Catchment Area
Very High	Vulnerable ecosystem
Very High	Strategic Water Source Areas